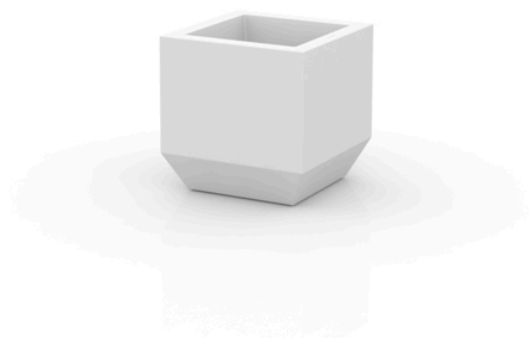


## Vela chill planter

by Ramón Esteve

Vela Collection, designed by [Ramon Esteve](#) for [Vondom](#). This extensive outdoor furniture and plantpot collection aims to offer the comfort and the quality of interior furniture without losing it's original qualities.



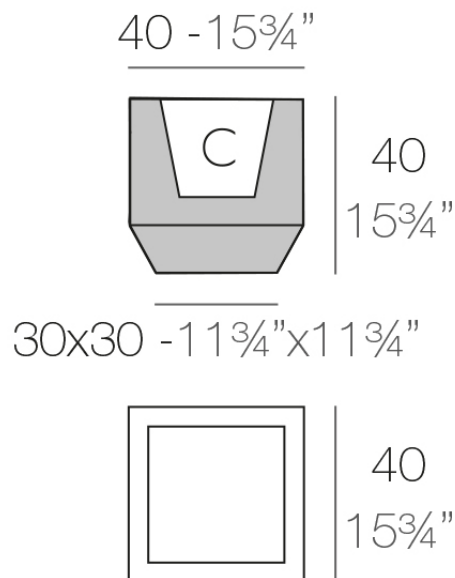
## Info

---

### Description

Made of polyethylene resin by rotational moulding. 100% Recyclable. Item suitable for indoor and outdoor use. Available in different finishes.

Weight: 5 Kg



VELA Chill Maceta C = 19 L  
VELA Chill Planter C = 5 gal

## Finishes

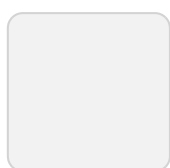
---

### finishes

---

#### BASIC

Ref. 54073A



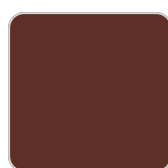
ice



crema



green



purjai red



orange



notte blue



white



black



bronze



steel



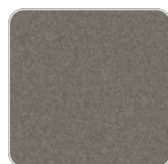
anthracite



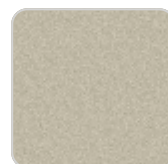
red



khaki



taupe



ecru



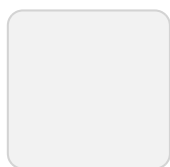
beige

#### Matt Polyethylene

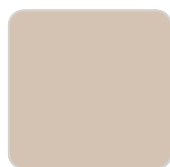
#### SELF-WATERING

Ref. 54073R

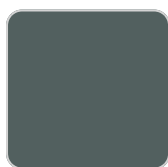
# VONDOM



ice



crema



green



purjai red



orange



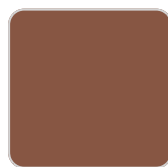
notte blue



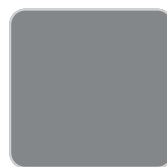
white



black



bronze



steel



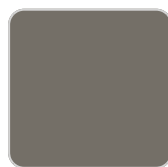
anthracite



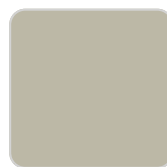
red



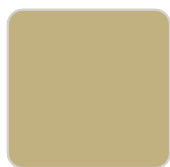
khaki



taupe



ecru



beige

Self-watering system included in all planters except those with basic finish

## LACQUERED

Ref. 54073F



purjai red



white



black



bronze



steel



anthracite



red



khaki



taupe



ecru



beige



modo green



champany

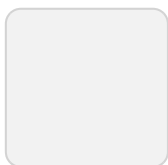
Lacquered Polyethylene

## lighting

---

WHITE LED

Ref. 54073W

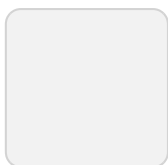


ice

White internally lit unit with LED technology. Available only in matte ice white finish.

RGBW LED

Ref. 54073L



ice

Unit with internal lighting with RGBW LED technology and remote control unit for switching colors. Available only in matte ice white finish. Remote control included.

RGBW LED DMX

Ref. 54073D



ice

Unit with internal lighting with RGBW LED technology and remote control unit for switching colors. Also controlled by DMX-1024 (wireless), enabling communication between one or more products simultaneously via the DMX transmitter (not included). There are two options to choose from: Professional XLR DMX and Home WIFI DMX. (Remote control included). Optional battery

## RGBW LED BATTERY

Ref. 54073Y

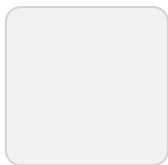


ice

Unit with internal lighting with battery-powered RGBW LED technology. Includes charger and remote control for switching colors and charger. Available only in matte ice white finish.

## RGBW LED DMX BATTERY

Ref. 54073DY



ice

Unit with internal lighting with RGBW LED technology and remote control unit for switching colors. Also controlled by DMX-1024 (wireless), enabling communication between one or more products simultaneously via the DMX transmitter (not included). There are two options to choose from: Professional XLR

# VONDOM

DMX and Home WIFI DMX. (Remote control included).

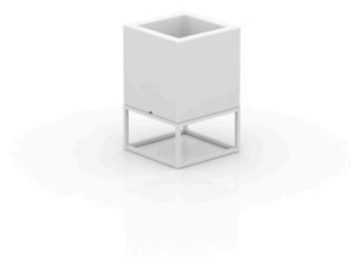




## Vela nano cube planter 18x18x28

by Ramón Esteve

Vela Collection, designed by Ramon Esteve for Vondom. This extensive outdoor furniture and plantpot collection aims to offer the comfort and the quality of interior furniture without losing it's original qualities.



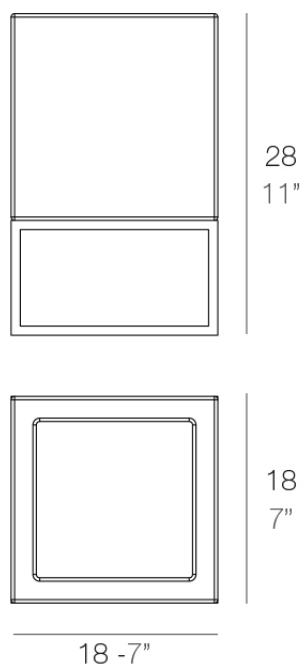
## Info

---

### Description

Pot made of polyethylene resin by rotational moulding. 100% Recyclable. Item suitable for indoor and outdoor use. Available in different finishes.

Weight: 1.6 Kg



VELA Nano Cubo 28      C = 2 L  
VELA Nano Cube 28      C = ½ gal

## Finishes

---

### finishes

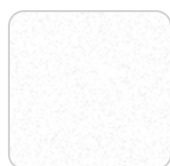
---

#### BASIC

Ref. 54043A



purjai red



white



black



bronze



steel



anthracite



red



khaki



taupe



plum



ecru



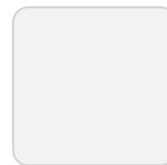
beige



orange



notte blue



ice



crema



green

#### Matt Polyethylene

#### LACQUERED

Ref. 54043F

# VONDOM



modo green



purjai red



white



black



bronze



steel



anthracite



champany



red



khaki



taupe



plum



ecru



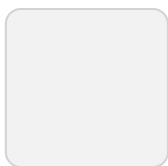
beige

Lacquered Polyethylene

## lighting

---

WHITE LED  
Ref. 54043W



ice

White internally lit unit with LED technology. Available only in matte ice white finish.

## Ambients

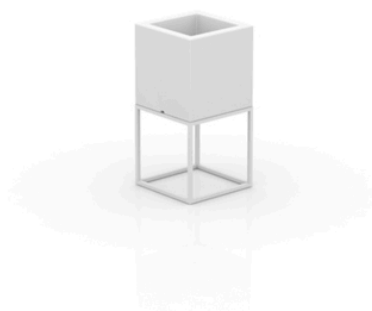
---



## Vela nano cube planter 18x18x36

by Ramón Esteve

Vela Collection, designed by Ramon Esteve for Vondom. This extensive outdoor furniture and plantpot collection aims to offer the comfort and the quality of interior furniture without losing it's original qualities.



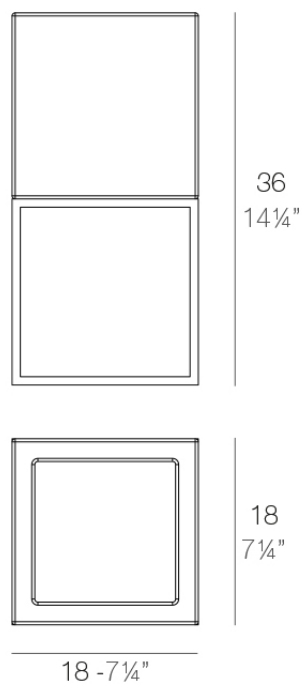
## Info

---

### Description

Pot made of polyethylene resin by rotational moulding. 100% Recyclable. Item suitable for indoor and outdoor use. Available in different finishes.

Weight: 0.4 Kg



VELA Nano Cubo 36 C = 2 L  
VELA Nano Cube 36 C = 1/2 gal

## Finishes

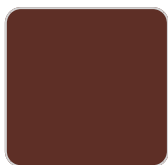
---

### finishes

---

#### BASIC

Ref. 54039A



purjai red



white



black



bronze



steel



anthracite



red



khaki



taupe



plum



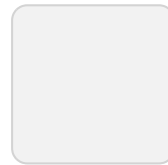
ecru



beige



orange



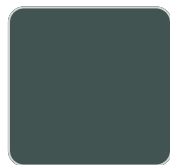
ice



notte blue



crema



green

#### Matt Polyethylene

#### LACQUERED

Ref. 54039F



# VONDOM



modo green



purjai red



white



black



bronze



steel



anthracite



champany



red



khaki



taupe



plum



ecru



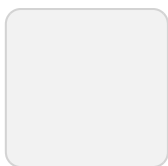
beige

Lacquered Polyethylene

## lighting

---

WHITE LED  
Ref. 54039W



ice

White internally lit unit with LED technology. Available only in matte ice white finish.

## Ambients

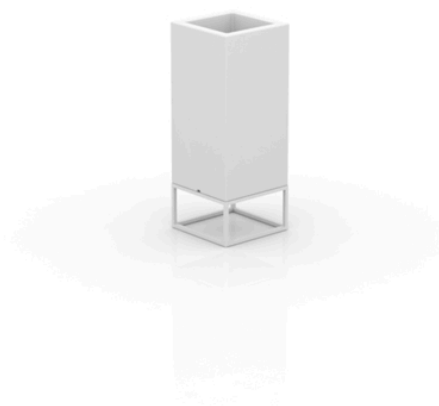
---



## Vela high nano cube planter 18x18x46

by Ramón Esteve

Vela Collection, designed by Ramon Esteve for Vondom. This extensive outdoor furniture and plantpot collection aims to offer the comfort and the quality of interior furniture without losing it's original qualities.



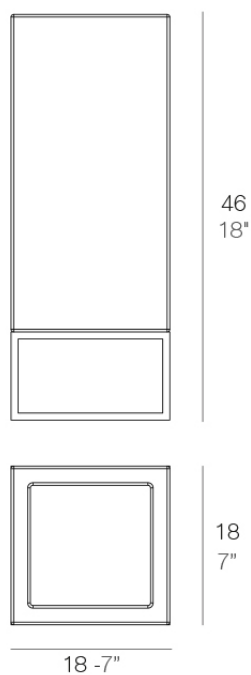
## Info

---

### Description

Pot made of polyethylene resin by rotational moulding. 100% Recyclable. Item suitable for indoor and outdoor use. Available in different finishes.

Weight: 2.2 Kg



VELA Nano Cubo Alto 46  
VELA Nano High Cube 46

C = 1,5 L  
C = ½ gal

## Finishes

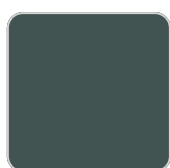
---

### finishes

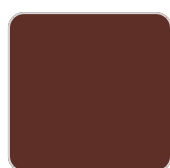
---

#### BASIC

Ref. 54040A



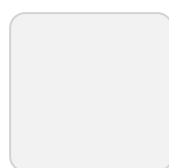
green



purjai red



orange



ice



notte blue



crema



white



black



bronze



steel



anthracite



red



khaki



taupe



plum



ecru



beige

#### Matt Polyethylene

#### LACQUERED

Ref. 54040F

# VONDOM



purjai red



white



black



bronze



steel



anthracite



red



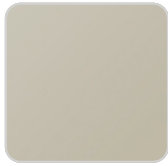
khaki



taupe



plum



ecru



beige



modo green



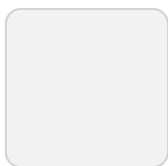
champany

Lacquered Polyethylene

## lighting

---

WHITE LED  
Ref. 54040W



ice

White internally lit unit with LED technology. Available only in matte ice white finish.

## Ambients

---



## Vela cube planter 40x40x70

by Ramón Esteve

Vela Collection, designed by Ramon Esteve for Vondom. This extensive outdoor furniture and plantpot collection aims to offer the comfort and the quality of interior furniture without losing it's original qualities.





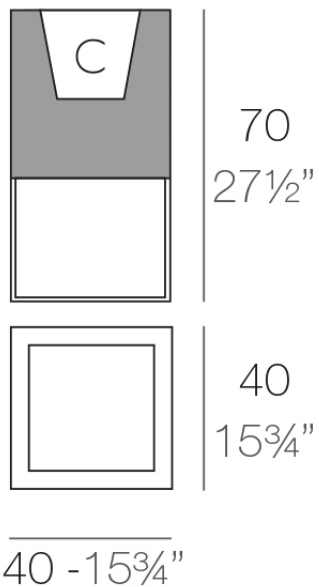
## Info

---

### Description

Pot made of polyethylene resin by rotational moulding. 100% Recyclable. Item suitable for indoor and outdoor use. Available in different finishes.

Weight: 6 Kg



VELA Cubo 40 C = 22 L x 33 cm  
VELA Cube 40 C = 6 gal x 12 1/8" x 12 1/8"

## Finishes

---

### finishes

---

#### BASIC

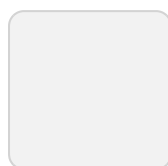
Ref. 54035A



orange



notte blue



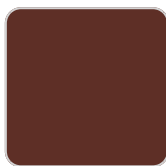
ice



crema



green



purjai red



white



black



bronze



steel



anthracite



red



khaki



taupe



ecru



beige

#### Matt Polyethylene

#### SELF-WATERING

Ref. 54035R

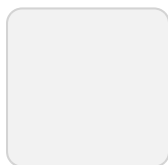
# VONDOM



orange



notte blue



ice



crema



green



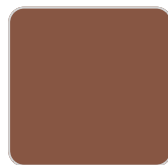
purjai red



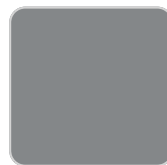
white



black



bronze



steel



anthracite



red



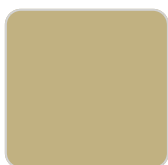
khaki



taupe



ecru



beige

Self-watering system included in all planters except those with basic finish

## LACQUERED

Ref. 54035F



purjai red



white



black



bronze



steel



anthracite



red



khaki



taupe



ecru



beige



modo green



champany

Lacquered Polyethylene

## lighting

---

WHITE LED

Ref. 54035W

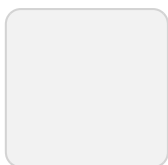


ice

White internally lit unit with LED technology. Available only in matte ice white finish.

RGBW LED

Ref. 54035L

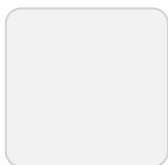


ice

Unit with internal lighting with RGBW LED technology and remote control unit for switching colors. Available only in matte ice white finish. Remote control included.

RGBW LED DMX

Ref. 54035D



ice

Unit with internal lighting with RGBW LED technology and remote control unit for switching colors. Also controlled by DMX-1024 (wireless), enabling communication between one or more products simultaneously via the DMX transmitter (not included). There are two options to choose from: Professional XLR DMX and Home WIFI DMX. (Remote control included). Optional battery

## RGBW LED BATTERY

Ref. 54035Y

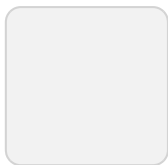


ice

Unit with internal lighting with battery-powered RGBW LED technology. Includes charger and remote control for switching colors and charger. Available only in matte ice white finish.

## RGBW LED DMX BATTERY

Ref. 54035DY



ice

Unit with internal lighting with RGBW LED technology and remote control unit for switching colors. Also controlled by DMX-1024 (wireless), enabling communication between one or more products simultaneously via the DMX transmitter (not included). There are two options to choose from: Professional XLR

# VONDOM

DMX and Home WIFI DMX. (Remote control included).

## Ambients

---



## Vela high cube planter 40x40x90

by Ramón Esteve

Vela Collection, designed by Ramon Esteve for Vondom. This extensive outdoor furniture and plantpot collection aims to offer the comfort and the quality of interior furniture without losing it's original qualities.





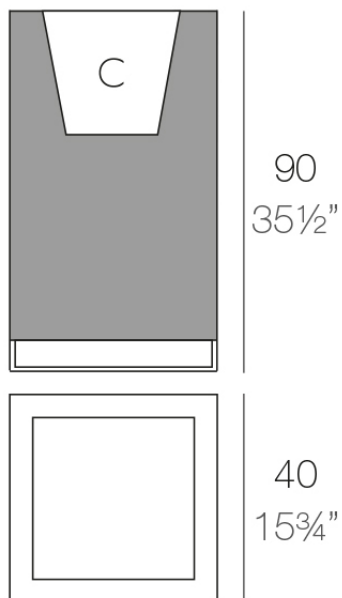
## Info

---

### Description

Pot made of polyethylene resin by rotational moulding. 100% Recyclable. Item suitable for indoor and outdoor use. Available in different finishes.

Weight: 13 Kg



40 - 15<sup>3</sup>/<sub>4</sub>"

VELA Cubo Alto 40

VELA High Cube 40

C = 24 L

C = 6<sup>1</sup>/<sub>2</sub> gal

## Finishes

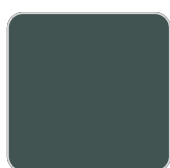
---

### finishes

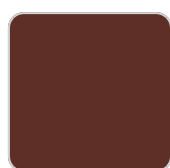
---

#### BASIC

Ref. 54049A



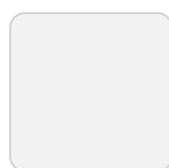
green



purjai red



orange



ice



notte blue



crema



white



black



bronze



steel



anthracite



red



khaki



taupe



ecru



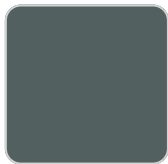
beige

#### Matt Polyethylene

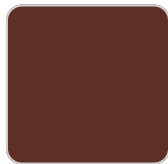
#### SELF-WATERING

Ref. 54049R

# VONDOM



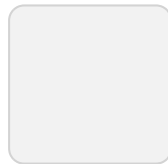
green



purjai red



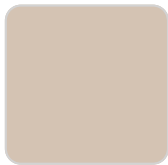
orange



ice



notte blue



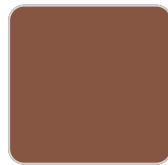
crema



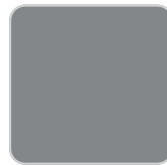
white



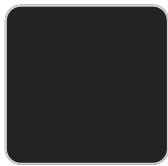
black



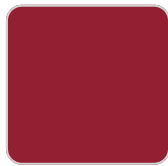
bronze



steel



anthracite



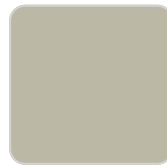
red



khaki



taupe



ecru



beige

Self-watering system included in all planters except those with basic finish

## LACQUERED

Ref. 54049F



purjai red



white



black



bronze



steel



anthracite



red



khaki



taupe



ecru

# VONDOM



beige



modo green



champany

Lacquered Polyethylene

## lighting

---

WHITE LED

Ref. 54049W

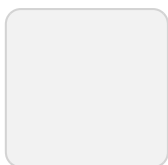


ice

White internally lit unit with LED technology. Available only in matte ice white finish.

RGBW LED

Ref. 54049L

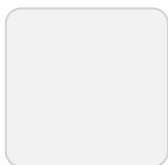


ice

Unit with internal lighting with RGBW LED technology and remote control unit for switching colors. Available only in matte ice white finish. Remote control included.

RGBW LED DMX

Ref. 54049D



ice

Unit with internal lighting with RGBW LED technology and remote control unit for switching colors. Also controlled by DMX-1024 (wireless), enabling communication between one or more products simultaneously via the DMX transmitter (not included). There are two options to choose from: Professional XLR DMX and Home WIFI DMX. (Remote control included). Optional battery

## RGBW LED BATTERY

Ref. 54049Y

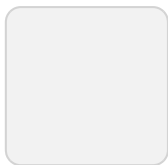


ice

Unit with internal lighting with battery-powered RGBW LED technology. Includes charger and remote control for switching colors and charger. Available only in matte ice white finish.

## RGBW LED DMX BATTERY

Ref. 54049DY



ice

Unit with internal lighting with RGBW LED technology and remote control unit for switching colors. Also controlled by DMX-1024 (wireless), enabling communication between one or more products simultaneously via the DMX transmitter (not included). There are two options to choose from: Professional XLR

# VONDOM

DMX and Home WIFI DMX. (Remote control included).

## Ambients

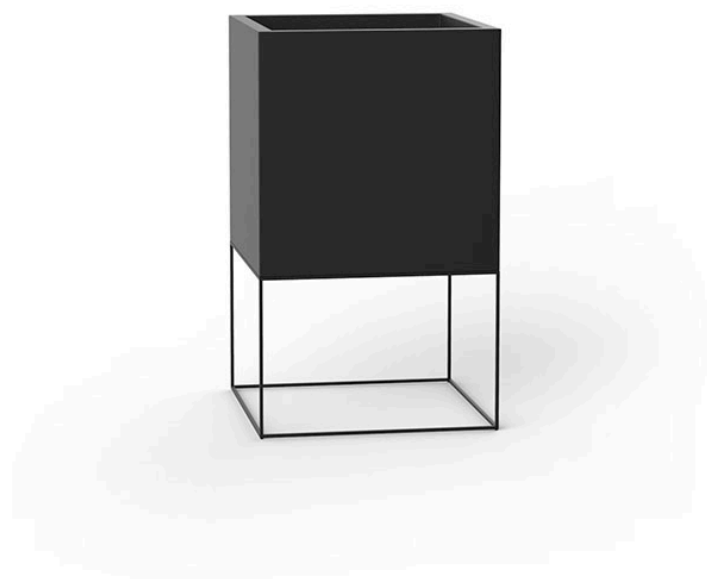
---



## Vela cube planter 60x60x100

by Ramón Esteve

Vela Collection, designed by Ramon Esteve for Vondom. This extensive outdoor furniture and plantpot collection aims to offer the comfort and the quality of interior furniture without losing it's original qualities.





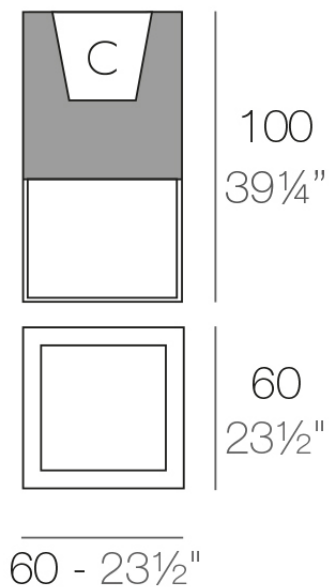
## Info

---

### Description

Pot made of polyethylene resin by rotational moulding. 100% Recyclable. Item suitable for indoor and outdoor use. Available in different finishes.

Weight: 14.9 Kg



VELA Cubo 60      C = 72 L  
VELA Cube 60      C = 19 gal

## Finishes

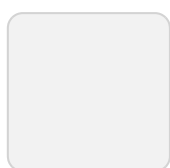
---

### finishes

---

#### BASIC

Ref. 54042A



ice



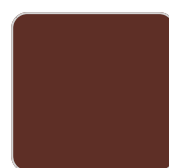
notte blue



crema



green



purjai red



orange



white



black



bronze



steel



anthracite



red



khaki



taupe



ecru



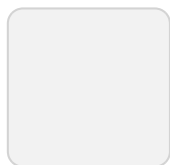
beige

#### Matt Polyethylene

#### SELF-WATERING

Ref. 54042R

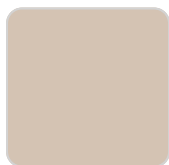
# VONDOM



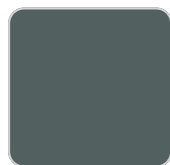
ice



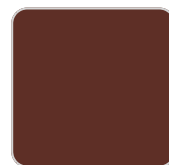
notte blue



crema



green



purjai red



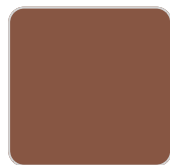
orange



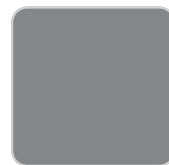
white



black



bronze



steel



anthracite



red



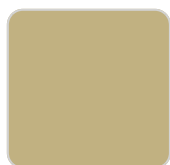
khaki



taupe



ecru



beige

Self-watering system included in all planters except those with basic finish

## LACQUERED

Ref. 54042F



purjai red



white



black



bronze



steel



anthracite



red



khaki



taupe



ecru

# VONDOM



beige



modo green



champany

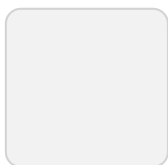
Lacquered Polyethylene

## lighting

---

WHITE LED

Ref. 54042W

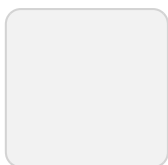


ice

White internally lit unit with LED technology. Available only in matte ice white finish.

RGBW LED

Ref. 54042L

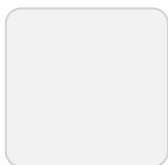


ice

Unit with internal lighting with RGBW LED technology and remote control unit for switching colors. Available only in matte ice white finish. Remote control included.

RGBW LED DMX

Ref. 54042D



ice

Unit with internal lighting with RGBW LED technology and remote control unit for switching colors. Also controlled by DMX-1024 (wireless), enabling communication between one or more products simultaneously via the DMX transmitter (not included). There are two options to choose from: Professional XLR DMX and Home WIFI DMX. (Remote control included). Optional battery

## RGBW LED BATTERY

Ref. 54042Y

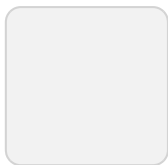


ice

Unit with internal lighting with battery-powered RGBW LED technology. Includes charger and remote control for switching colors and charger. Available only in matte ice white finish.

## RGBW LED DMX BATTERY

Ref. 54042DY



ice

Unit with internal lighting with RGBW LED technology and remote control unit for switching colors. Also controlled by DMX-1024 (wireless), enabling communication between one or more products simultaneously via the DMX transmitter (not included). There are two options to choose from: Professional XLR

# VONDOM

DMX and Home WIFI DMX. (Remote control included).

## Ambients

---



## Vela high cube planter 60x60x100

by Ramón Esteve

Vela Collection, designed by Ramon Esteve for Vondom. This extensive outdoor furniture and plantpot collection aims to offer the comfort and the quality of interior furniture without losing it's original qualities.





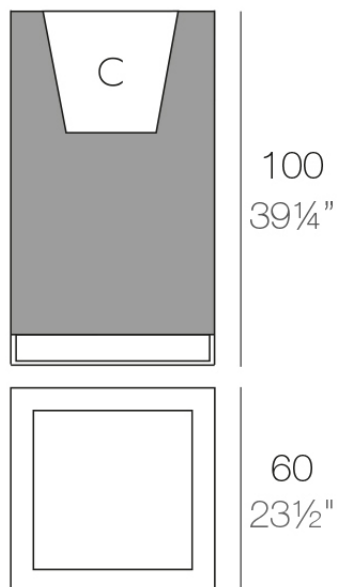
## Info

---

### Description

Pot made of polyethylene resin by rotational moulding. 100% Recyclable. Item suitable for indoor and outdoor use. Available in different finishes.

Weight: 17 Kg



60 - 23 1/2"

VELA Cubo Alto 60

VELA High Cube 60

C = 72 L (15 x 46 cm)

C = 19 gal (14 x 18")

## Finishes

---

### finishes

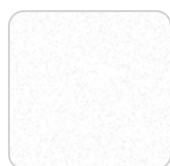
---

#### BASIC

Ref. 54036A



purjai red



white



black



bronze



steel



anthracite



red



khaki



taupe



ecru



beige



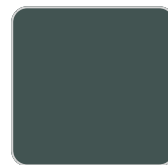
orange



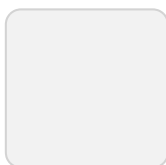
notte blue



crema



green



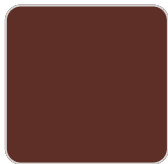
ice

#### Matt Polyethylene

#### SELF-WATERING

Ref. 54036R

# VONDOM



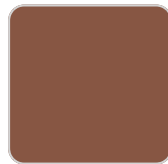
purjai red



white



black



bronze



steel



anthracite



red



khaki



taupe



ecru



beige



orange



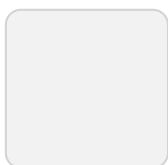
notte blue



crema



green



ice

Self-watering system included in all planters except those with basic finish

## LACQUERED

Ref. 54036F



modo green



purjai red



white



black



bronze



steel



anthracite



champany



red



khaki



taupe



ecru



beige

Lacquered Polyethylene

## lighting

---

WHITE LED

Ref. 54036W

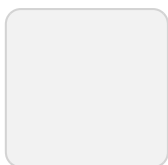


ice

White internally lit unit with LED technology. Available only in matte ice white finish.

RGBW LED

Ref. 54036L

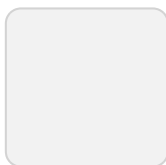


ice

Unit with internal lighting with RGBW LED technology and remote control unit for switching colors. Available only in matte ice white finish. Remote control included.

RGBW LED DMX

Ref. 54036D

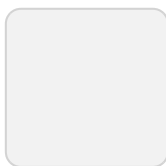


ice

Unit with internal lighting with RGBW LED technology and remote control unit for switching colors. Also controlled by DMX-1024 (wireless), enabling communication between one or more products simultaneously via the DMX transmitter (not included). There are two options to choose from: Professional XLR DMX and Home WIFI DMX. (Remote control included). Optional battery

## RGBW LED BATTERY

Ref. 54036Y

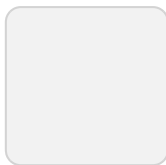


ice

Unit with internal lighting with battery-powered RGBW LED technology. Includes charger and remote control for switching colors and charger. Available only in matte ice white finish.

## RGBW LED DMX BATTERY

Ref. 54036DY



ice

Unit with internal lighting with RGBW LED technology and remote control unit for switching colors. Also controlled by DMX-1024 (wireless), enabling communication between one or more products simultaneously via the DMX transmitter (not included). There are two options to choose from: Professional XLR

# VONDOM

DMX and Home WIFI DMX. (Remote control included).

## Ambients

---



## Vela land planter

by Ramón Esteve

Vela Collection, designed by Ramon Esteve for Vondom. This extensive outdoor furniture and plantpot collection aims to offer the comfort and the quality of interior furniture without losing it's original qualities.





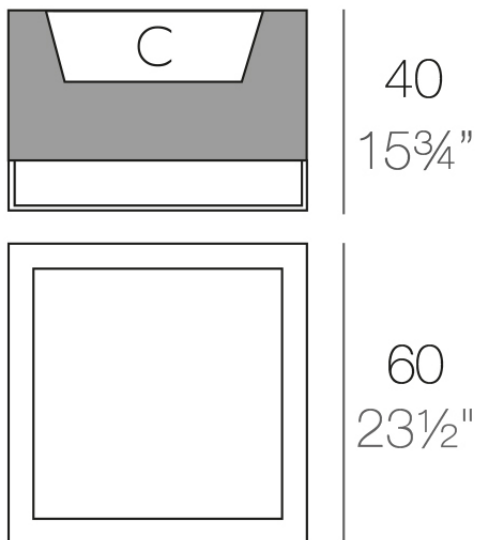
## Info

---

### Description

Pot made of polyethylene resin by rotational moulding. 100% Recyclable. Item suitable for indoor and outdoor use. Available in different finishes.

Weight: 10 Kg



---

60 - 23 1/2"

VELA Land C = 30 L 16 x 24 cm

VELA Land C = 8 gal 11 x 9 1/2"

## Finishes

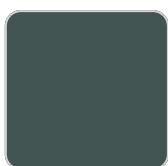
---

### finishes

---

#### BASIC

Ref. 54037A



green



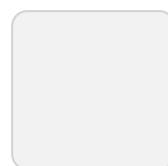
purjai red



orange



notte blue



ice



crema



white



black



bronze



steel



anthracite



red



khaki



taupe



ecru



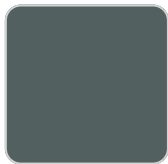
beige

#### Matt Polyethylene

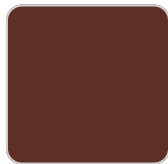
#### SELF-WATERING

Ref. 54037R

# VONDOM



green



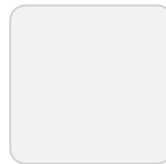
purjai red



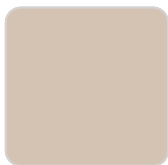
orange



notte blue



ice



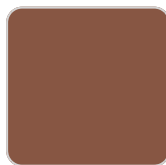
crema



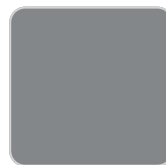
white



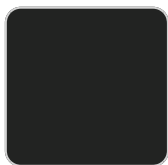
black



bronze



steel



anthracite



red



khaki



taupe



ecru



beige

Self-watering system included in all planters except those with basic finish

## LACQUERED

Ref. 54037F



purjai red



white



black



bronze



steel



anthracite



red



khaki



taupe



ecru

# VONDOM



beige



modo green



champany

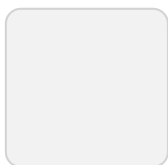
Lacquered Polyethylene

## lighting

---

WHITE LED

Ref. 54037W

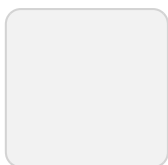


ice

White internally lit unit with LED technology. Available only in matte ice white finish.

RGBW LED

Ref. 54037L

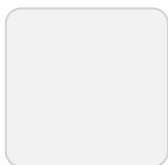


ice

Unit with internal lighting with RGBW LED technology and remote control unit for switching colors. Available only in matte ice white finish. Remote control included.

RGBW LED DMX

Ref. 54037D



ice

Unit with internal lighting with RGBW LED technology and remote control unit for switching colors. Also controlled by DMX-1024 (wireless), enabling communication between one or more products simultaneously via the DMX transmitter (not included). There are two options to choose from: Professional XLR DMX and Home WIFI DMX. (Remote control included). Optional battery

## RGBW LED BATTERY

Ref. 54037Y

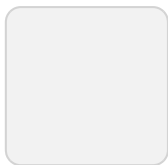


ice

Unit with internal lighting with battery-powered RGBW LED technology. Includes charger and remote control for switching colors and charger. Available only in matte ice white finish.

## RGBW LED DMX BATTERY

Ref. 54037DY



ice

Unit with internal lighting with RGBW LED technology and remote control unit for switching colors. Also controlled by DMX-1024 (wireless), enabling communication between one or more products simultaneously via the DMX transmitter (not included). There are two options to choose from: Professional XLR

# VONDOM

DMX and Home WIFI DMX. (Remote control included).

## Ambients

---



## Vela wall planter

by Ramón Esteve

Vela Collection, designed by [Ramon Esteve](#) for [Vondom](#). This extensive outdoor furniture and plantpot collection aims to offer the comfort and the quality of interior furniture without losing it's original qualities.





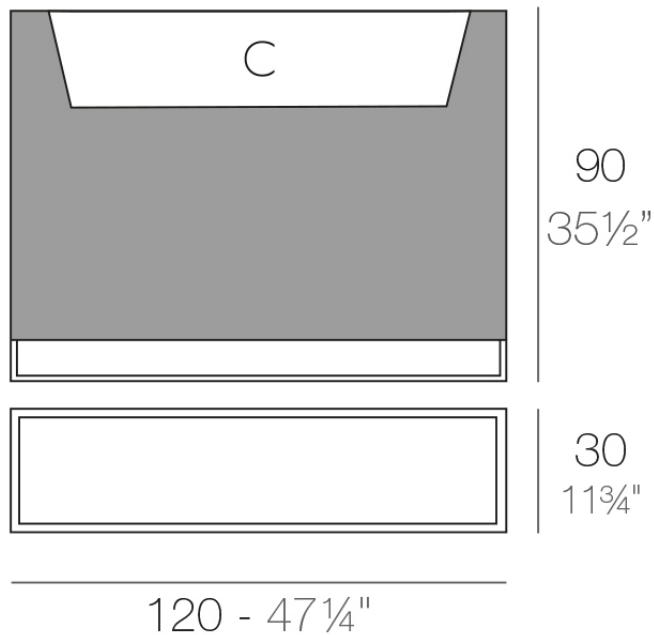
## Info

---

### Description

Pot made of polyethylene resin by rotational moulding. 100% Recyclable. Item suitable for indoor and outdoor use. Available in different finishes.

Weight: 22.1 Kg



VELA Muro C = 60 L 14 x 24 cm  
VELA Wall C = 16 gal 14 x 24 cm

## Finishes

---

### finishes

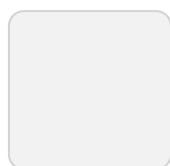
---

#### BASIC

Ref. 54038A



orange



ice



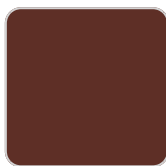
notte blue



crema



green



purjai red



white



black



bronze



steel



anthracite



red



khaki



taupe



ecru



beige

#### Matt Polyethylene

#### SELF-WATERING

Ref. 54038R

# VONDOM



orange



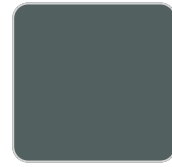
ice



notte blue



crema



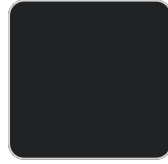
green



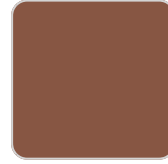
purjai red



white



black



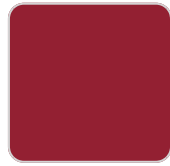
bronze



steel



anthracite



red



khaki



taupe



ecru



beige

Self-watering system included in all planters except those with basic finish

## LACQUERED

Ref. 54038F



purjai red



white



black



bronze



steel



anthracite



red



khaki



taupe



ecru



beige



modo green



champany

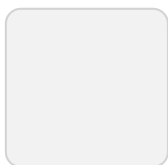
Lacquered Polyethylene

## lighting

---

WHITE LED

Ref. 54038W

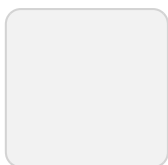


ice

White internally lit unit with LED technology. Available only in matte ice white finish.

RGBW LED

Ref. 54038L



ice

Unit with internal lighting with RGBW LED technology and remote control unit for switching colors. Available only in matte ice white finish. Remote control included.

RGBW LED DMX

Ref. 54038D



ice

Unit with internal lighting with RGBW LED technology and remote control unit for switching colors. Also controlled by DMX-1024 (wireless), enabling communication between one or more products simultaneously via the DMX transmitter (not included). There are two options to choose from: Professional XLR DMX and Home WIFI DMX. (Remote control included). Optional battery

## RGBW LED BATTERY

Ref. 54038Y

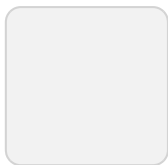


ice

Unit with internal lighting with battery-powered RGBW LED technology. Includes charger and remote control for switching colors and charger. Available only in matte ice white finish.

## RGBW LED DMX BATTERY

Ref. 54038DY



ice

Unit with internal lighting with RGBW LED technology and remote control unit for switching colors. Also controlled by DMX-1024 (wireless), enabling communication between one or more products simultaneously via the DMX transmitter (not included). There are two options to choose from: Professional XLR

# VONDOM

DMX and Home WIFI DMX. (Remote control included).

