

Vases planter 130x55x45

by JM Ferrero

VASES Collection, is made up of flowerpots, furniture and lighting designed by the Valencian designer JM Ferrero. It's shapes were inspired by diamond cutting, producing pieces of clear-cut shapes and great style, creating a big visual impact.

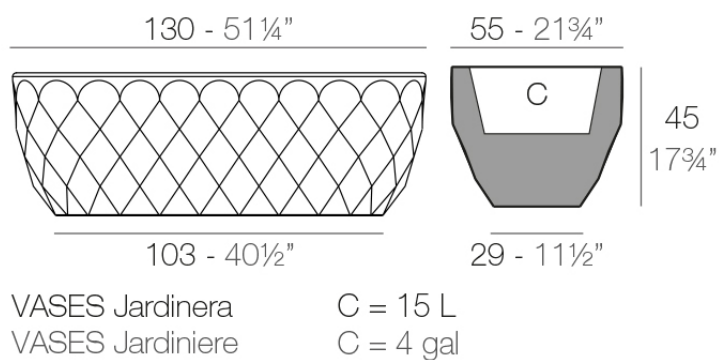


Info

Description

Pot made of polyethylene resin by rotational moulding. 100% Recyclable.
Item suitable for indoor and outdoor use. Available in different finishes.

Weight: 15.02 Kg



Finishes

finishes

BASIC

Ref. 47130A



crema



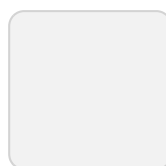
green



purjai red



orange



ice



notte blue



white



black



bronze



steel



anthracite



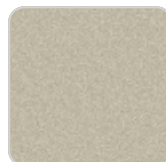
red



khaki



taupe



ecru

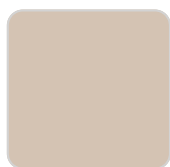


beige

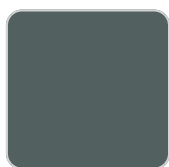
Matt Polyethylene

SELF-WATERING

Ref. 47130R



crema



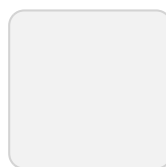
green



purjai red



orange



ice



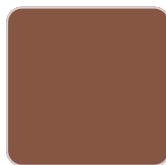
notte blue



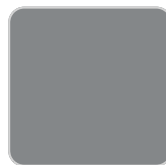
white



black



bronze



steel



anthracite



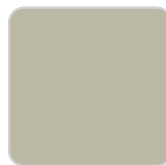
red



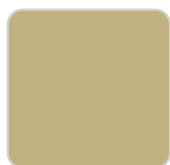
khaki



taupe



ecru



beige

Self-watering system included in all planters except those with basic finish

LACQUERED

Ref. 47130F



purjai red



white



black



bronze



steel



anthracite



red



khaki



taupe



ecru



beige



modo green



champany

Lacquered Polyethylene

lighting

WHITE LED

Ref. 47130W



ice

White internally lit unit with LED technology. Available only in matte ice white finish.

RGBW LED

Ref. 47130L



ice

Unit with internal lighting with RGBW LED technology and remote control unit for switching colors. Available only in matte ice white finish. Remote control included.

RGBW LED DMX

Ref. 47130D



ice

Unit with internal lighting with RGBW LED technology and remote control unit for switching colors. Also controlled by DMX-1024 (wireless), enabling communication between one or more products simultaneously via the DMX transmitter (not included). There are two options to choose from: Professional XLR DMX and Home WIFI DMX. (Remote control included). Optional battery

RGBW LED BATTERY

Ref. 47130Y



ice

Unit with internal lighting with battery-powered RGBW LED technology. Includes charger and remote control for switching colors and charger. Available only in matte ice white finish.

RGBW LED DMX BATTERY

Ref. 47130DY



ice

Unit with internal lighting with RGBW LED technology and remote control unit for switching colors. Also controlled by DMX-1024 (wireless), enabling communication between one or more products simultaneously via the DMX transmitter (not included). There are two options to choose from: Professional XLR

DMX and Home WIFI DMX. (Remote control included).

Vases nano planter ø14x12

by JM Ferrero

VASES Collection, is made up of flowerpots, furniture and lighting designed by the Valencian designer JM Ferrero. It's shapes were inspired by diamond cutting, producing pieces of clear-cut shapes and great style, creating a big visual impact.

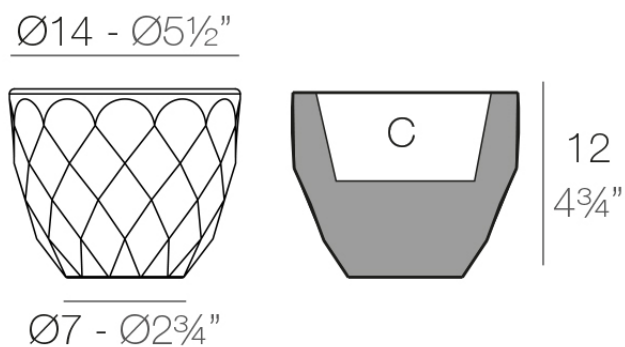


Info

Description

Pot made of polyethylene resin by rotational moulding. 100% Recyclable.
Item suitable for indoor and outdoor use. Available in different finishes.

Weight: 0.2 Kg



VASES Nano $\text{Ø}14 \times 12 \text{ cm}$

VASES Nano $\text{Ø}5\frac{1}{2}" \times 4\frac{3}{4}"$

C = 0,5 L

C = $\frac{1}{4}$ gal

Finishes

finishes

BASIC

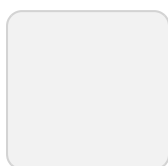
Ref. 47012A



purjai red



orange



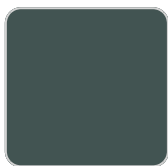
ice



notte blue



crema



green



white



black



bronze



steel



anthracite



red



khaki



taupe



plum



ecru



beige

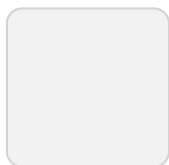
Matt Polyethylene

LACQUERED

Ref. 47012F



purjai red



ice



white



black



bronze



steel



anthracite



red



khaki



taupe



plum



ecru



beige



modo green

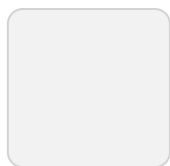


champany

Lacquered Polyethylene

lighting

WHITE LED
Ref. 47012W



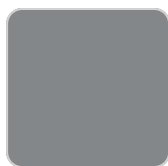
ice



white



black



steel

White internally lit unit with LED technology. Available only in matte ice white finish.

Ambients





Vases nano planter ø18x15

by JM Ferrero

VASES Collection, is made up of flowerpots, furniture and lighting designed by the Valencian designer JM Ferrero. It's shapes were inspired by diamond cutting, producing pieces of clear-cut shapes and great style, creating a big visual impact.

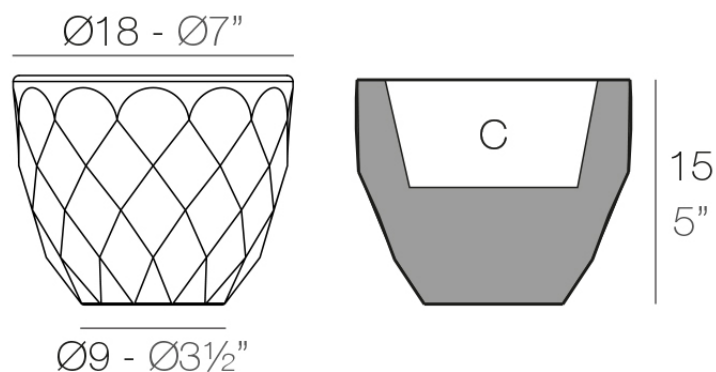


Info

Description

Pot made of polyethylene resin by rotational moulding. 100% Recyclable.
Item suitable for indoor and outdoor use. Available in different finishes.

Weight: 0.4 Kg



VASES Nano Ø18 x 15 cm

VASES Nano Ø7" x 5"

C = 1 L

C = ¼ gal

Finishes

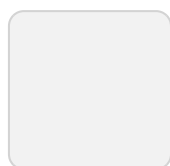
finishes

BASIC

Ref. 47018A



orange



ice



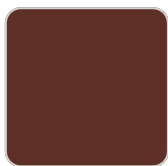
notte blue



crema



green



purjai red



white



black



bronze



steel



anthracite



red



khaki



taupe



plum



ecru

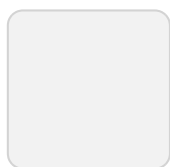


beige

Matt Polyethylene

LACQUERED

Ref. 47018F



ice



purjai red



white



black



bronze



steel



anthracite



red



khaki



taupe



plum



ecru



beige



modo green

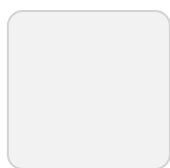


champany

Lacquered Polyethylene

lighting

WHITE LED
Ref. 47018W



ice



white



black



steel

White internally lit unit with LED technology. Available only in matte ice white finish.

Ambients





Vases nano planter ø14x28

by JM Ferrero

VASES Collection, is made up of flowerpots, furniture and lighting designed by the Valencian designer JM Ferrero. It's shapes were inspired by diamond cutting, producing pieces of clear-cut shapes and great style, creating a big visual impact.

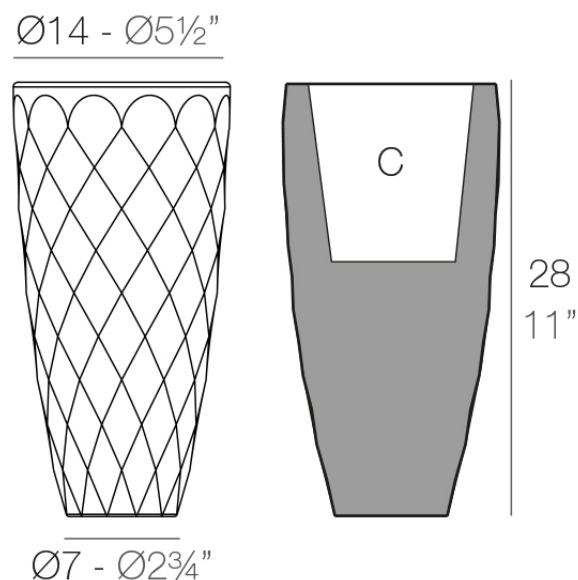


Info

Description

Pot made of polyethylene resin by rotational moulding. 100% Recyclable.
Item suitable for indoor and outdoor use. Available in different finishes.

Weight: 0.5 Kg



VASES Nano $\text{Ø}14 \times 28$ cm

VASES Nano $\text{Ø}5\frac{1}{2}" \times 11"$

C = 1 L

C = $\frac{1}{4}$ gal

Finishes

finishes

BASIC

Ref. 47028A



crema



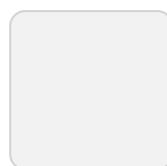
green



purjai red



orange



ice



notte blue



white



black



bronze



steel



anthracite



red



khaki



taupe



plum



ecru



beige

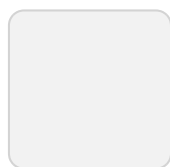
Matt Polyethylene

LACQUERED

Ref. 47028F



purjai red



ice



white



black



bronze



steel



anthracite



red



khaki



taupe



plum



ecru



beige



modo green

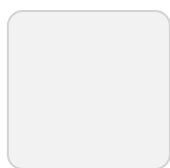


champany

Lacquered Polyethylene

lighting

WHITE LED
Ref. 47028W



ice



white



black



steel

White internally lit unit with LED technology. Available only in matte ice white finish.

Ambients





Vases planter ø65x100

by JM Ferrero

VASES Collection, is made up of flowerpots, furniture and lighting designed by the Valencian designer JM Ferrero. It's shapes were inspired by diamond cutting, producing pieces of clear-cut shapes and great style, creating a big visual impact.

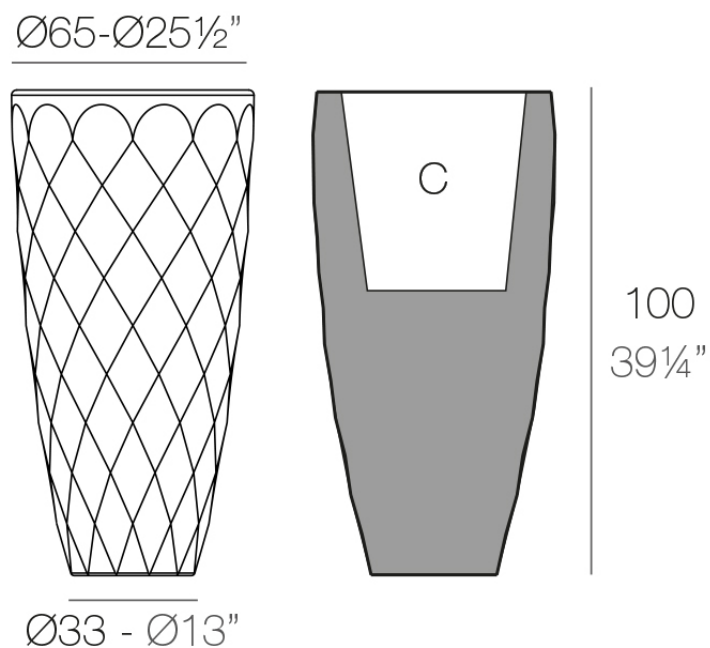


Info

Description

Pot made of polyethylene resin by rotational moulding. 100% Recyclable.
Item suitable for indoor and outdoor use. Available in different finishes.

Weight: 12.5 Kg



VASES Macetero Ø65

C = 56 L

VASES Planter Ø65

C = 15 gal

Finishes

finishes

BASIC

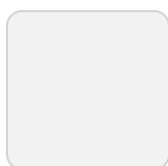
Ref. 47065A



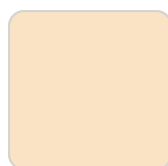
orange



notte blue



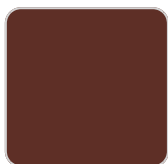
ice



crema



green



purjai red



white



black



bronze



steel



anthracite



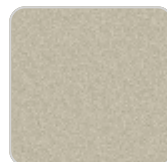
red



khaki



taupe



ecru



beige

Matt Polyethylene

SELF-WATERING

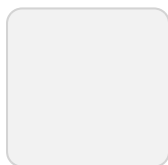
Ref. 47065R



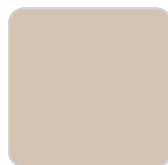
orange



notte blue



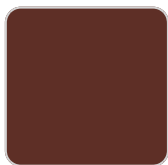
ice



crema



green



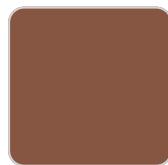
purjai red



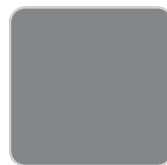
white



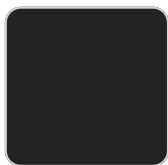
black



bronze



steel



anthracite



red



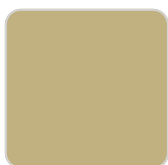
khaki



taupe



ecru



beige

Self-watering system included in all planters except those with basic finish

LACQUERED

Ref. 47065F



purjai red



white



black



bronze



steel



anthracite



red



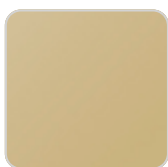
khaki



taupe



ecru



beige



modo green



champany

Lacquered Polyethylene

lighting

WHITE LED

Ref. 47065W

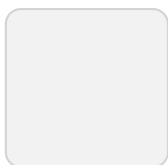


ice

White internally lit unit with LED technology. Available only in matte ice white finish.

RGBW LED

Ref. 47065L



ice

Unit with internal lighting with RGBW LED technology and remote control unit for switching colors. Available only in matte ice white finish. Remote control included.

RGBW LED DMX

Ref. 47065D



ice

Unit with internal lighting with RGBW LED technology and remote control unit for switching colors. Also controlled by DMX-1024 (wireless), enabling communication between one or more products simultaneously via the DMX transmitter (not included). There are two options to choose from: Professional XLR DMX and Home WIFI DMX. (Remote control included). Optional battery

RGBW LED BATTERY

Ref. 47065Y



ice

Unit with internal lighting with battery-powered RGBW LED technology. Includes charger and remote control for switching colors and charger. Available only in matte ice white finish.

RGBW LED DMX BATTERY

Ref. 47065DY



ice

Unit with internal lighting with RGBW LED technology and remote control unit for switching colors. Also controlled by DMX-1024 (wireless), enabling communication between one or more products simultaneously via the DMX transmitter (not included). There are two options to choose from: Professional XLR

DMX and Home WIFI DMX. (Remote control included).

Vases nano planter ø18x36

by JM Ferrero

VASES Collection, is made up of flowerpots, furniture and lighting designed by the Valencian designer JM Ferrero. It's shapes were inspired by diamond cutting, producing pieces of clear-cut shapes and great style, creating a big visual impact.

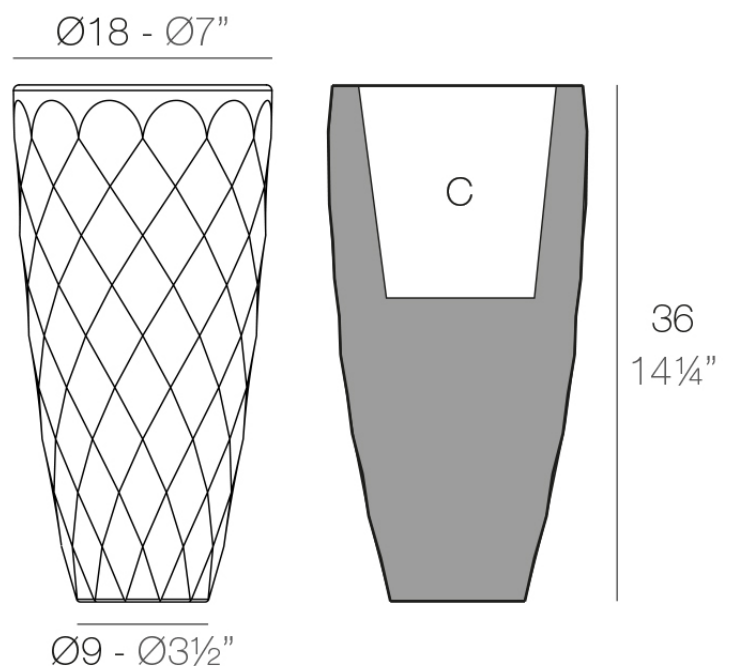


Info

Description

Pot made of polyethylene resin by rotational moulding. 100% Recyclable.
Item suitable for indoor and outdoor use. Available in different finishes.

Weight: 0.9 Kg



VASES Nano Ø18 x 36 cm

VASES Nano Ø7" x 14¼"

C = 2,5 L

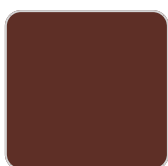
C = ¾ gal

Finishes

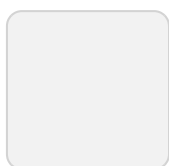
finishes

BASIC

Ref. 47036A



purjai red



ice



white



black



bronze



steel



anthracite



red



khaki



taupe



plum



ecru



beige



orange



notte blue



crema



green

Matt Polyethylene

LACQUERED

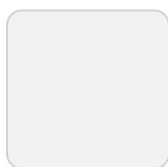
Ref. 47036F



modo green



purjai red



ice



white



black



bronze



steel



anthracite



champany



red



khaki



taupe



plum



ecru



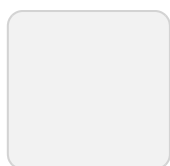
beige

Lacquered Polyethylene

lighting

WHITE LED

Ref. 47036W



ice



white



black



steel

White internally lit unit with LED technology. Available only in matte ice white finish.

Ambients





Vases nano planter 14x33x12

by JM Ferrero

VASES Collection, is made up of flowerpots, furniture and lighting designed by the Valencian designer JM Ferrero. It's shapes were inspired by diamond cutting, producing pieces of clear-cut shapes and great style, creating a big visual impact.

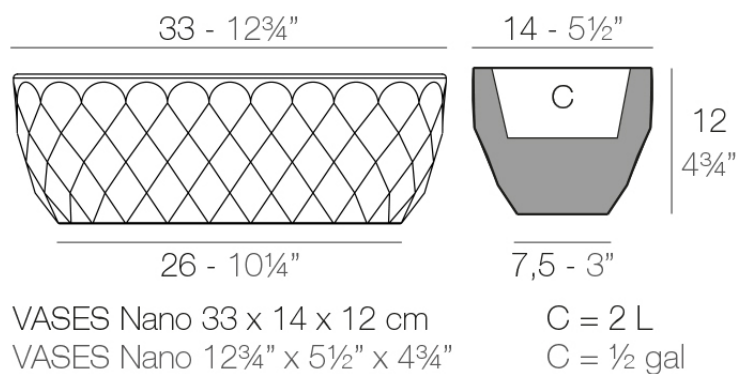


Info

Description

Pot made of polyethylene resin by rotational moulding. 100% Recyclable.
Item suitable for indoor and outdoor use. Available in different finishes.

Weight: 0.7 Kg



Finishes

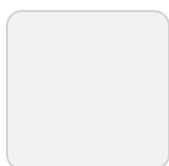
finishes

BASIC

Ref. 47033A



purjai red



ice



white



black



bronze



steel



anthracite



red



khaki



taupe



plum



ecru



beige



orange



notte blue



crema



green

Matt Polyethylene

LACQUERED

Ref. 47033F



modo green



purjai red



ice



white



black



bronze



steel



anthracite



champany



red



khaki



taupe



plum



ecru

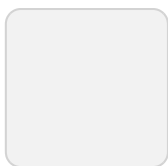


beige

Lacquered Polyethylene

lighting

WHITE LED
Ref. 47033W



ice



white



black



steel

White internally lit unit with LED technology. Available only in matte ice white finish.

Ambients





Vases planter ø55x45

by JM Ferrero

VASES Collection, is made up of flowerpots, furniture and lighting designed by the Valencian designer JM Ferrero. It's shapes were inspired by diamond cutting, producing pieces of clear-cut shapes and great style, creating a big visual impact.

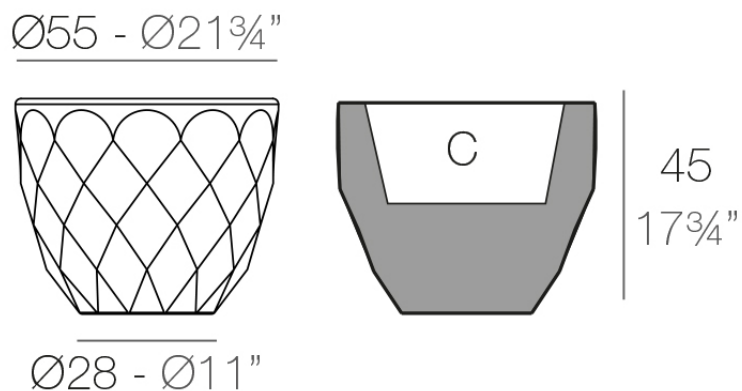


Info

Description

Pot made of polyethylene resin by rotational moulding. 100% Recyclable.
Item suitable for indoor and outdoor use. Available in different finishes.

Weight: 6 Kg



VASES Macetero Ø55

C = 41 L

VASES Planter Ø55

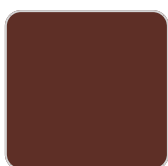
C = 11 gal

Finishes

finishes

BASIC

Ref. 47055A



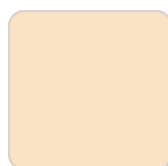
purjai red



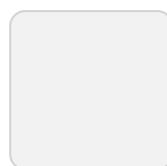
orange



notte blue



crema



ice



green



white



black



bronze



steel



anthracite



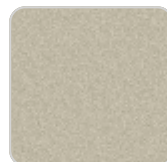
red



khaki



taupe



ecru

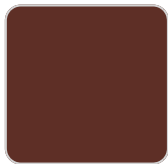


beige

Matt Polyethylene

SELF-WATERING

Ref. 47055R



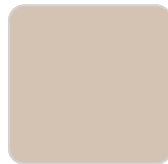
purjai red



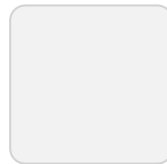
orange



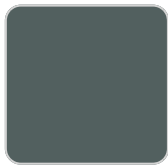
notte blue



crema



ice



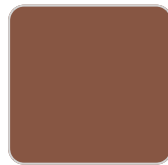
green



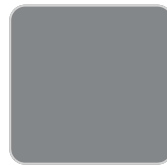
white



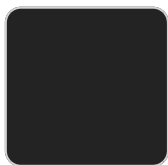
black



bronze



steel



anthracite



red



khaki



taupe



ecru



beige

Self-watering system included in all planters except those with basic finish

LACQUERED

Ref. 47055F



purjai red



white



black



bronze



steel



anthracite



red



khaki



taupe



ecru



beige



modo green



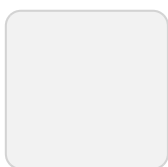
champany

Lacquered Polyethylene

lighting

WHITE LED

Ref. 47055W

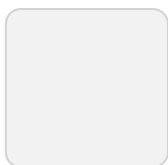


ice

White internally lit unit with LED technology. Available only in matte ice white finish.

RGBW LED

Ref. 47055L



ice

Unit with internal lighting with RGBW LED technology and remote control unit for switching colors. Available only in matte ice white finish. Remote control included.

RGBW LED DMX

Ref. 47055D



ice

Unit with internal lighting with RGBW LED technology and remote control unit for switching colors. Also controlled by DMX-1024 (wireless), enabling communication between one or more products simultaneously via the DMX transmitter (not included). There are two options to choose from: Professional XLR DMX and Home WIFI DMX. (Remote control included). Optional battery

RGBW LED BATTERY

Ref. 47055Y



ice

Unit with internal lighting with battery-powered RGBW LED technology. Includes charger and remote control for switching colors and charger. Available only in matte ice white finish.

RGBW LED DMX BATTERY

Ref. 47055DY



ice

Unit with internal lighting with RGBW LED technology and remote control unit for switching colors. Also controlled by DMX-1024 (wireless), enabling communication between one or more products simultaneously via the DMX transmitter (not included). There are two options to choose from: Professional XLR

DMX and Home WIFI DMX. (Remote control included).

