

The factory lamp s

by Ramón Esteve

The Factory Collection, designed by Ramon Esteve for Vondom, is **characterized by the aluminum profile and the “deployé” mesh**. Discover this collection of aluminium furniture composed of a modular sofa, an armchair, a lounger, a side table, a lamp, a coffee table, a high table, chairs, and a room divider.

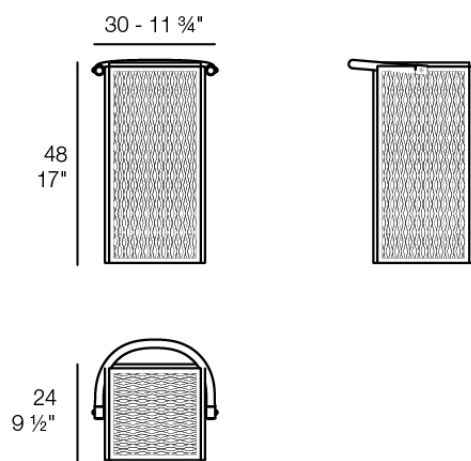


Info

Description

Designer lamp. The deployed mesh is made from aluminum, and the inner lighting is made out of polyethylene resin manufactured by rotational molding. Suitable for an interior and an outdoor use. Available in various finishes.

Weight: 3.99 Kg



THE FACTORY Lámpara 30 x 24 x 48
THE FACTORY Puff S 11 3/4 x 9 1/2 x 19"

Finishes

lighting

RGBW LED BATTERY

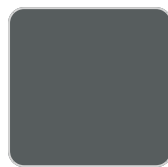
Ref. 54612Y



white



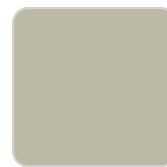
british gray



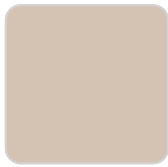
traffic gray



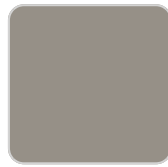
black



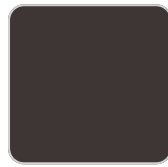
ecru



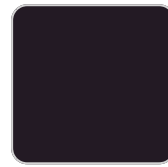
crema



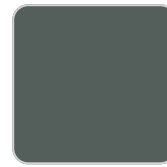
castoro fiber



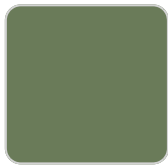
cacao



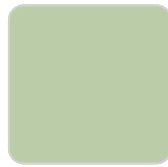
notte blue



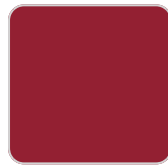
modo green



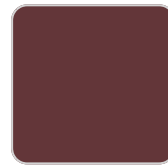
pickle



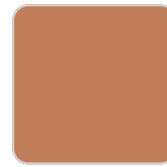
almond



red



purjai red

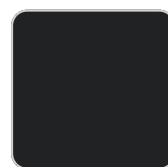


melon

Unit with internal lighting with battery-powered RGBW LED technology. Includes charger and remote control for switching colors and charger. Available only in matte ice white finish.

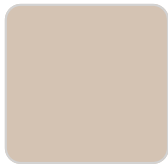
RGBW LED DMX BATTERY

Ref. 54612DY



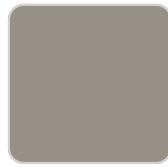
VONDOM

white



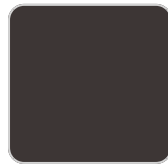
crema

british gray



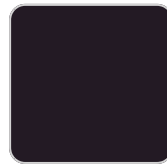
castoro fiber

traffic gray



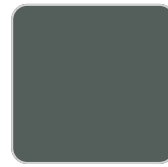
cacao

black

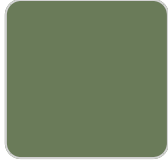


notte blue

ecru



modo green



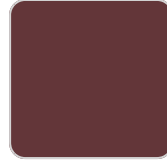
pickle



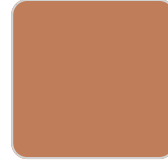
almond



red



purjai red



melon



mostaza

Unit with internal lighting with RGBW LED technology and remote control unit for switching colors. Also controlled by DMX-1024 (wireless), enabling communication between one or more products simultaneously via the DMX transmitter (not included). There are two options to choose from: Professional XLR DMX and Home WIFI DMX. (Remote control included).

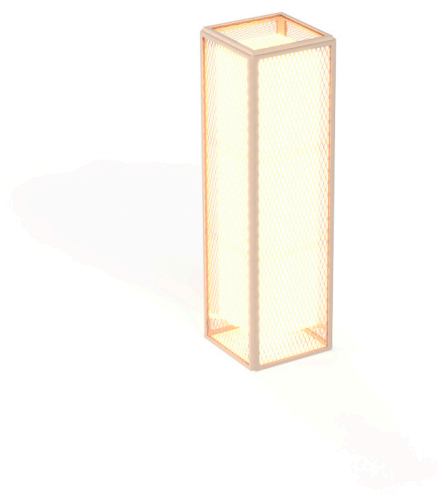
Ambients



The factory lamp m

by Ramón Esteve

The Factory Collection, designed by Ramon Esteve for Vondom, is **characterized by the aluminum profile and the “deployé” mesh**. Discover this collection of aluminium furniture composed of a modular sofa, an armchair, a lounger, a side table, a lamp, a coffee table, a high table, chairs, and a room divider.

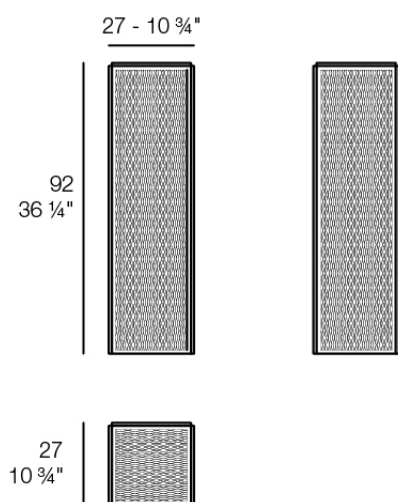


Info

Description

Designer lamp. The deployed mesh is made from aluminum, and the inner lighting is made out of polyethylene resin manufactured by rotational molding. Suitable for an interior and an outdoor use. Available in various finishes.

Weight: 7.29 Kg



THE FACTORY Lámpara 27 x 27 x 92
THE FACTORY Puff S 10 $\frac{3}{4}$ x 10 $\frac{3}{4}$ x 36 $\frac{1}{4}$ "

Finishes

lighting

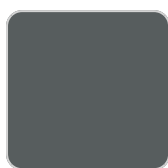
WHITE LED
Ref. 54615W



white



british gray



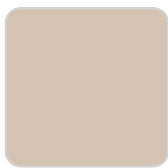
traffic gray



black



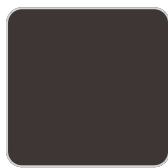
ecru



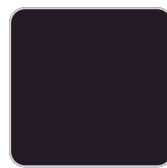
crema



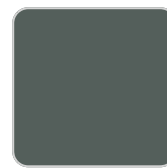
castoro fiber



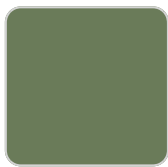
cacao



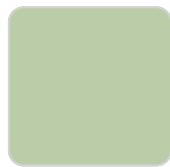
notte blue



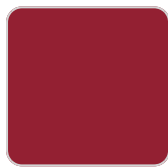
modo green



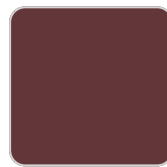
pickle



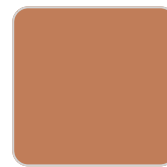
almond



red



purjai red



melon

White internally lit unit with LED technology. Available only in matte ice white finish.

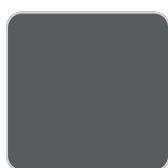
RGBW LED
Ref. 54615L



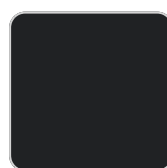
white



british gray



traffic gray

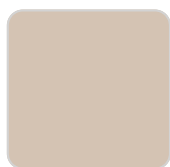


black

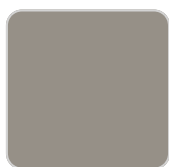


ecru

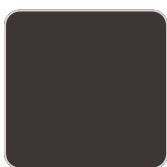
VONDOM



crema



castoro fiber



cacao



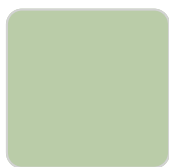
notte blue



modo green



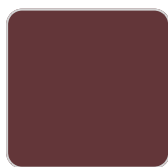
pickle



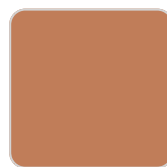
almond



red



purjai red



melon

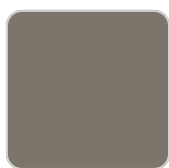
Unit with internal lighting with RGBW LED technology and remote control unit for switching colors. Available only in matte ice white finish. Remote control included.

RGBW LED DMX

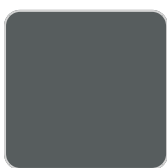
Ref. 54615D



white



british gray



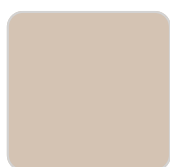
traffic gray



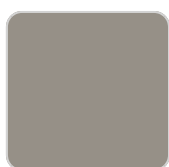
black



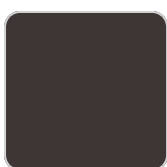
ecru



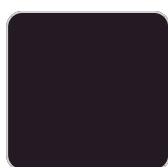
crema



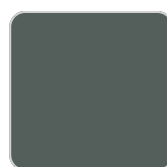
castoro fiber



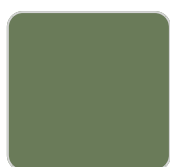
cacao



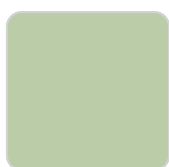
notte blue



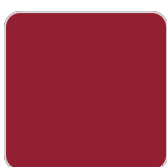
modo green



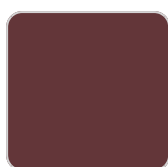
pickle



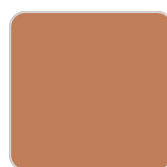
almond



red



purjai red



melon

Unit with internal lighting with RGBW LED technology and remote control unit for switching colors. Also controlled by DMX-1024 (wireless), enabling communication between one or more products simultaneously via the DMX transmitter (not included). There are two options to choose from: Professional XLR DMX and Home WIFI DMX. (Remote control included). Optional battery RGBW LED BATTERY

VONDOM

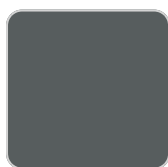
Ref. 54615Y



white



british gray



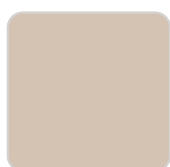
traffic gray



black



ecru



crema



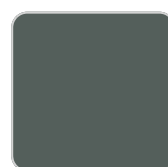
castoro fiber



cacao



notte blue



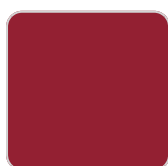
modo green



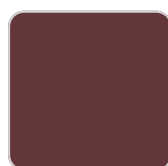
pickle



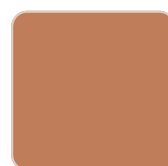
almond



red



purjai red



melon

Unit with internal lighting with battery-powered RGBW LED technology. Includes charger and remote control for switching colors and charger. Available only in matte ice white finish.

RGBW LED DMX BATTERY

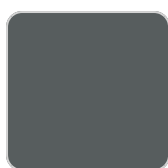
Ref. 54615DY



white



british gray



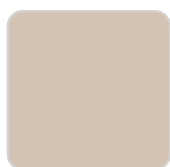
traffic gray



black



ecru



crema



castoro fiber



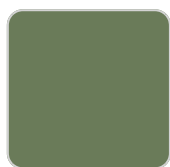
cacao



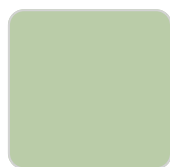
notte blue



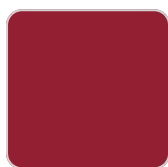
modo green



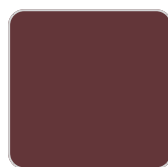
pickle



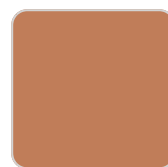
almond



red



purjai red



melon

VONDOM

pickle

almond

red

purjai red

melon

Unit with internal lighting with RGBW LED technology and remote control unit for switching colors. Also controlled by DMX-1024 (wireless), enabling communication between one or more products simultaneously via the DMX transmitter (not included). There are two options to choose from: Professional XLR DMX and Home WIFI DMX. (Remote control included).

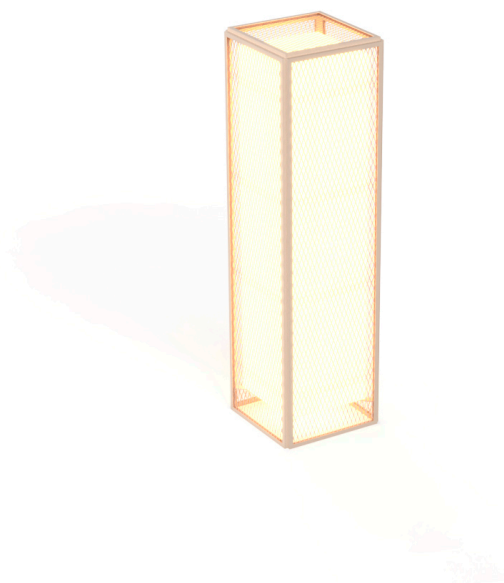
Ambients



The factory lamp I

by Ramón Esteve

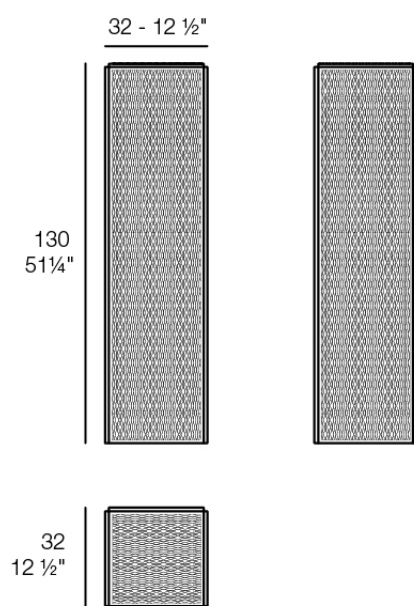
The Factory Collection, designed by Ramon Esteve for Vondom, is **characterized by the aluminum profile and the “deployé” mesh**. Discover this collection of aluminium furniture composed of a modular sofa, an armchair, a lounger, a side table, a lamp, a coffee table, a high table, chairs, and a room divider.



Info

Description

Weight: 11.69 Kg



THE FACTORY Lámpara 31x31x120
THE FACTORY Puff S 12¼ x 12¼ x 51¼"

Finishes

aluminium

ALUMINIUM

Ref. 54621



white



british gray



traffic gray



black



ecru



crema



castoro fiber



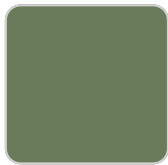
cacao



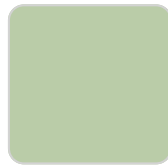
notte blue



modo green



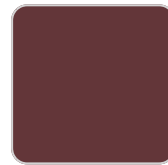
pickle



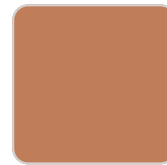
almond



red



purjai red



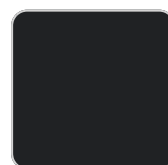
melon

Lacquered aluminium profile.

lighting

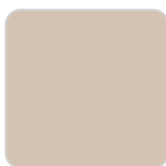
WHITE LED

Ref. 54621W



VONDOM

white



crema

british gray



castoro fiber

traffic gray



cacao

black



notte blue

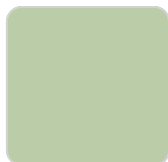
ecru



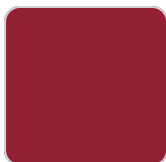
modo green



pickle



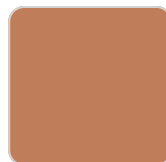
almond



red



purjai red



melon

White internally lit unit with LED technology. Available only in matte ice white finish.

RGBW LED Ref. 54621L



white



british gray



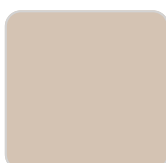
traffic gray



black



ecru



crema



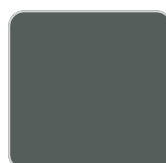
castoro fiber



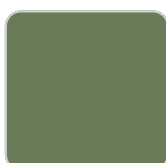
cacao



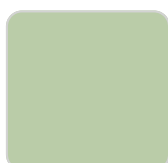
notte blue



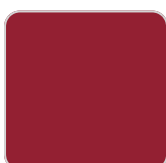
modo green



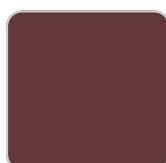
pickle



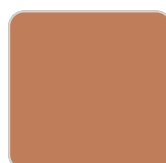
almond



red



purjai red



melon

Unit with internal lighting with RGBW LED technology and remote control unit for switching colors. Available only in matte ice white finish. Remote control included.

RGBW LED DMX

VONDOM

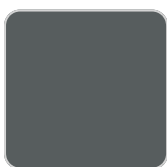
Ref. 54621D



white



british gray



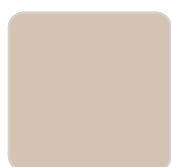
traffic gray



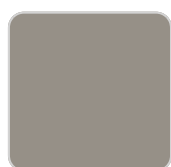
black



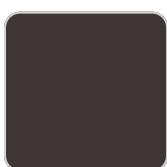
ecru



crema



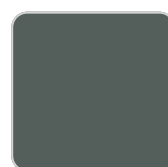
castoro fiber



cacao



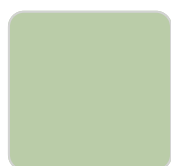
notte blue



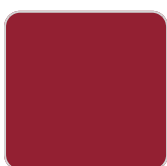
modo green



pickle



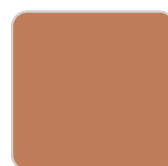
almond



red



purjai red



melon

Unit with internal lighting with RGBW LED technology and remote control unit for switching colors. Also controlled by DMX-1024 (wireless), enabling communication between one or more products simultaneously via the DMX transmitter (not included). There are two options to choose from: Professional XLR DMX and Home WIFI DMX. (Remote control included). Optional battery

RGBW LED BATTERY

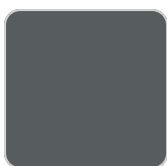
Ref. 54621Y



white



british gray



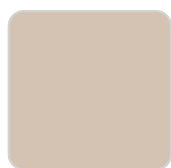
traffic gray



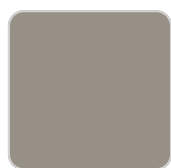
black



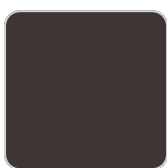
ecru



crema



castoro fiber



cacao

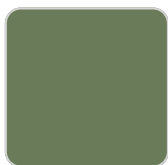


notte blue

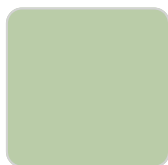


modo green

VONDONM



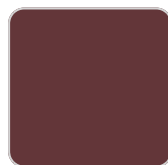
pickle



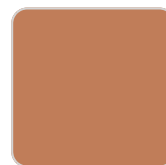
almond



red



purjai red



melon

Unit with internal lighting with battery-powered RGBW LED technology. Includes charger and remote control for switching colors and charger. Available only in matte ice white finish.

RGBW LED DMX BATTERY

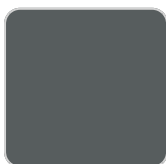
Ref. 54621DY



white



british gray



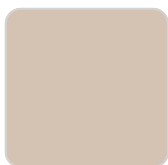
traffic gray



black



ecru



crema



castoro fiber



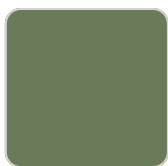
cacao



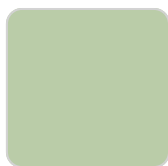
notte blue



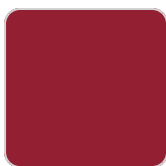
modo green



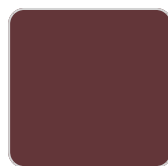
pickle



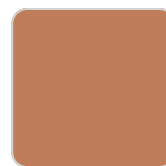
almond



red



purjai red



melon

Unit with internal lighting with RGBW LED technology and remote control unit for switching colors. Also controlled by DMX-1024 (wireless), enabling communication between one or more products simultaneously via the DMX transmitter (not included). There are two options to choose from: Professional XLR DMX and Home WIFI DMX. (Remote control included).

Ambients

