

The factory daybed

by Ramón Esteve

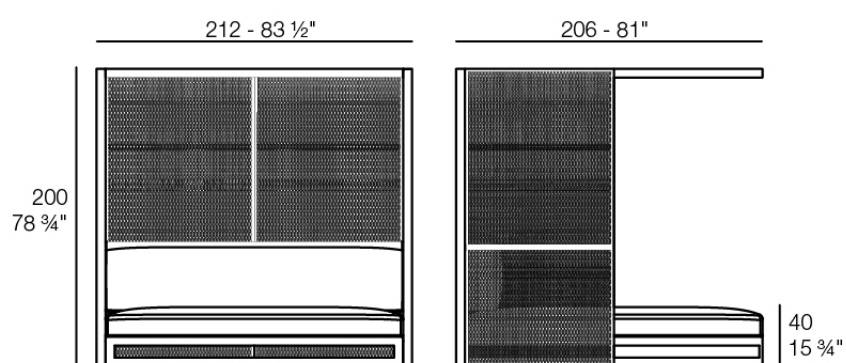
The Factory Collection, designed by Ramon Esteve for Vondom, is **characterized by the aluminum profile and the “deployé” mesh**. Discover this collection of aluminium furniture composed of a modular sofa, an armchair, a lounger, a side table, a lamp, a coffee table, a high table, chairs, and a room divider.



Info

Description

Weight: 144 Kg



THE FACTORY Daybed
THE FACTORY Daybed

Finishes

aluminium

ALUMINIUM

Ref. 54622



white



british gray



traffic gray



black



ecru



crema



castoro fiber



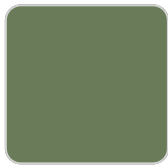
cacao



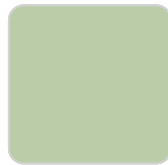
notte blue



modo green



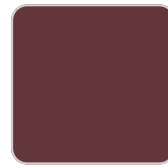
pickle



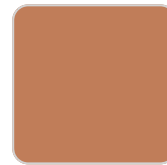
almond



red



purjai red



melon

Lacquered aluminium profile.

parasol

SUNVISION

Ref. 54622TEL

PVC and acrylic outdoor fabric for Vela Canopy, Vela Round Canopy and Ulm parasol.

fabric

GLAD

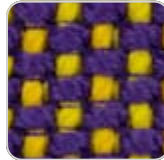
Ref. 54622CO



oro 1031



ocre 1051



sunset 1020



delhi 1038



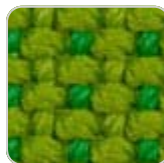
lima 1030



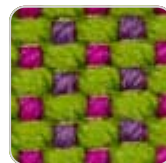
aguacate 1028



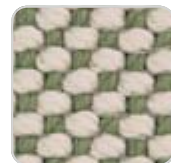
caribe 1004



bosc 1029



artemisa 1027



oasis 1007



oceano 1005



pruna 1045



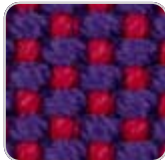
noa 1026



berry 1021



amatista 1011



vera 1019



afrodita 1013



grana 1046



bacco 1034



dahlia 1035



wine 1012



foc 1052



hestia 1014



turquoise 1053



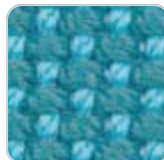
niord 1015



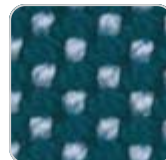
masai 1018



ultramar 1002



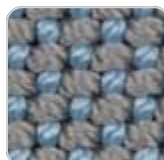
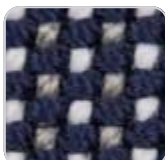
aquamarina 1003



esmeralda 1016

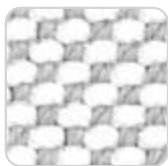


night 1024



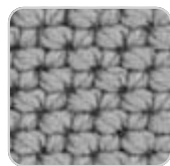
VONDOM

galan 1025



iceberg 1037

eclipse 1023



steel 1042

perla 1006



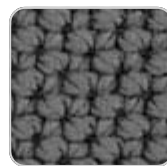
moon 1040

calipso 1017



granito 1008

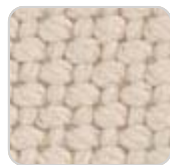
snow 1041



grey 1043



anthracite 1044



ecru 1047



dessert 1033



taupe 1048



terra 1039



duna 1009



moka 1010



chocolate 1050

Soft and cozy fabric suitable for indoor and outdoor use.

VARM

Ref. 54622CO

Soft and cozy fabric suitable for indoor and outdoor use.

HYGGE

Ref. 54622CO

Soft and cozy fabric suitable for indoor and outdoor use.

NAUTIC

Ref. 54622CO

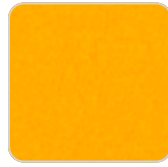
VONDOM



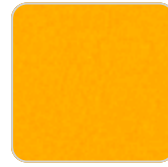
black 1105



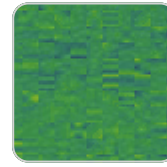
notte blue 1114



orange 1113



orange 3115



forest 1112



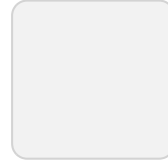
taupe 1102



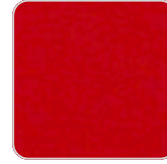
natural 1111



bronze 1104



white 1100



red 1108



crema 1103



purjai red 1106



steel 1101

Soft leather like fabric suitable for indoor and outdoor use. Standard option for upholstery.

SILVERTEX Ref. 54622CO



forest 1224



beige 1211



bronze 1214



khaki 1218



steel 1208



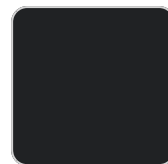
plum 2016



navy 3068



taupe 1209



antrachite 1210

Vinyl fabric suitable for indoor and outdoor use. Special option for upholstery.

CREVIN Ref. 54622CO

VONDOM



white 1308



steel 1309



taupe 1310



anthracite 1311

Upholstery fabric, that as and natural appearance and can be easy cleaned by washing machines, allowing an easy removal of mildew. Suitable for indoor and outdoor use

CICO

Ref. 54622CO

Cozy fabric with an elegant look and soft touch.

ACAPULCO

Ref. 54622CO

Cozy fabric with an elegant look and soft touch.

SIESTA

Ref. 54622CO

Cozy fabric with an elegant look and soft touch.

IKON

Ref. 54622CO

Cozy fabric with an elegant look and soft touch.

KROLLET

VONDOM

Ref. 54622CO

Soft and cozy fabric suitable for indoor and outdoor use.

HERITAGE

Ref. 54622CO



granite 1531

Outdoor fabrics are waterproof 50% recycled acrylic, 47% acrylic and 3% PE.

SAVANE

Ref. 54622CO



white 1501



tornado 1503



whisper 1502

Outdoor fabrics are waterproof 100% acrylic.

