

Vaso ø30x23

The most extensive collection of indoor and outdoor planters designed by Studio Vondom. Timeless and minimalist designs that allow you to create unique and original atmospheres for homes, restaurants and any space.



Info

Description

Pot made of polyethylene resin by rotational moulding. 100% Recyclable. Item suitable for indoor and outdoor use. Available in different finishes.

Weight: 0.15 Kg

Ø30 - Ø11 $\frac{3}{4}$ "



Ø23 - Ø9"

VASO Ø30 cm

C = 12 L

VASO Ø11 $\frac{3}{4}$ "

C = 3 $\frac{1}{4}$ gal

Finishes

finishes

SIMPLE

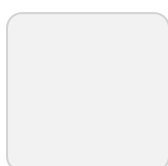
Ref. 40230



purjai red



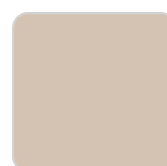
orange



ice



notte blue



crema



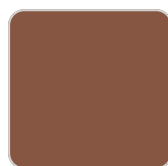
green



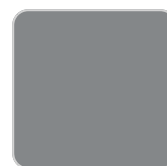
white



black



bronze



steel



anthracite



red



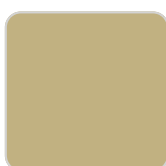
khaki



taupe



ecru



beige

Matt finishes pot one wall

LACQUERED

Ref. 40230F

VONDOM



purjai red



white



black



bronze



steel



anthracite



red



khaki



taupe



ecru



beige



modo green



champany

Lacquered Polyethylene

Vase ø35x27

The most extensive collection of indoor and outdoor planters designed by Studio Vondom. Timeless and minimalist designs that allow you to create unique and original atmospheres for homes, restaurants and any space.



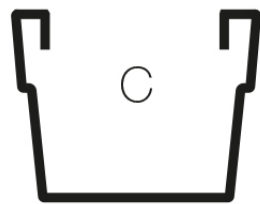
Info

Description

Pot made of polyethylene resin by rotational moulding. 100% Recyclable. Item suitable for indoor and outdoor use. Available in different finishes.

Weight: 0.25 Kg

Ø35 - Ø13¾"



27
10½"

Ø27 - Ø10¾"

VASO Ø35 cm

C = 20 L

VASO Ø13¾"

C = 5¼ gal

Finishes

finishes

SIMPLE

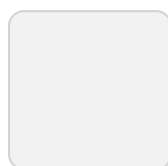
Ref. 40235



orange



notte blue



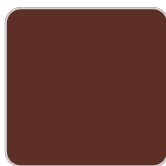
ice



crema



green



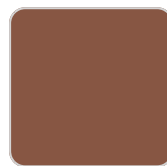
purjai red



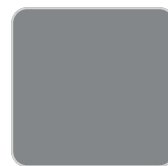
white



black



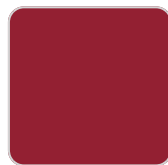
bronze



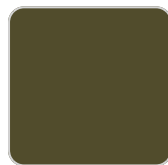
steel



anthracite



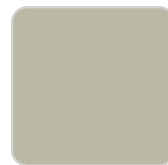
red



khaki



taupe



ecru



beige

Matt finishes pot one wall

LACQUERED

Ref. 40235F

VONDOM



purjai red



white



black



bronze



steel



anthracite



red



khaki



taupe



ecru



beige



modo green



champany

Lacquered Polyethylene

Vase ø40x31

The most extensive collection of indoor and outdoor planters designed by Studio Vondom. Timeless and minimalist designs that allow you to create unique and original atmospheres for homes, restaurants and any space.



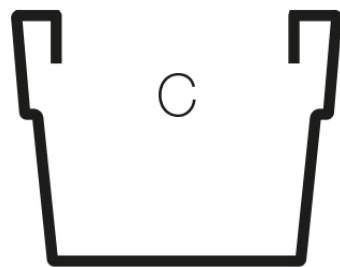
Info

Description

Pot made of polyethylene resin by rotational moulding. 100% Recyclable. Item suitable for indoor and outdoor use. Available in different finishes.

Weight: 0.38 Kg

Ø40 - Ø15³/₄"



30
11³/₄"

Ø31 - Ø12¹/₄"

VASO Ø40 cm

C = 30 L

VASO Ø15³/₄"

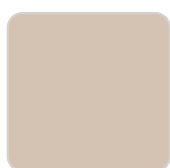
C = 8 gal

Finishes

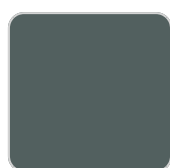
finishes

SIMPLE

Ref. 40240



crema



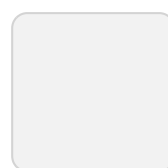
green



purjai red



orange



ice



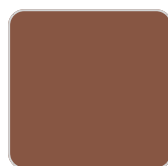
notte blue



white



black



bronze



steel



anthracite



red



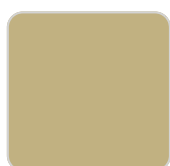
khaki



taupe



ecru



beige

Matt finishes pot one wall

LACQUERED

Ref. 40240F

VONDOM



purjai red



white



black



bronze



steel



anthracite



red



khaki



taupe



ecru



beige



modo green



champany

Lacquered Polyethylene

Vase ø45x34

The most extensive collection of indoor and outdoor planters designed by Studio Vondom. Timeless and minimalist designs that allow you to create unique and original atmospheres for homes, restaurants and any space.

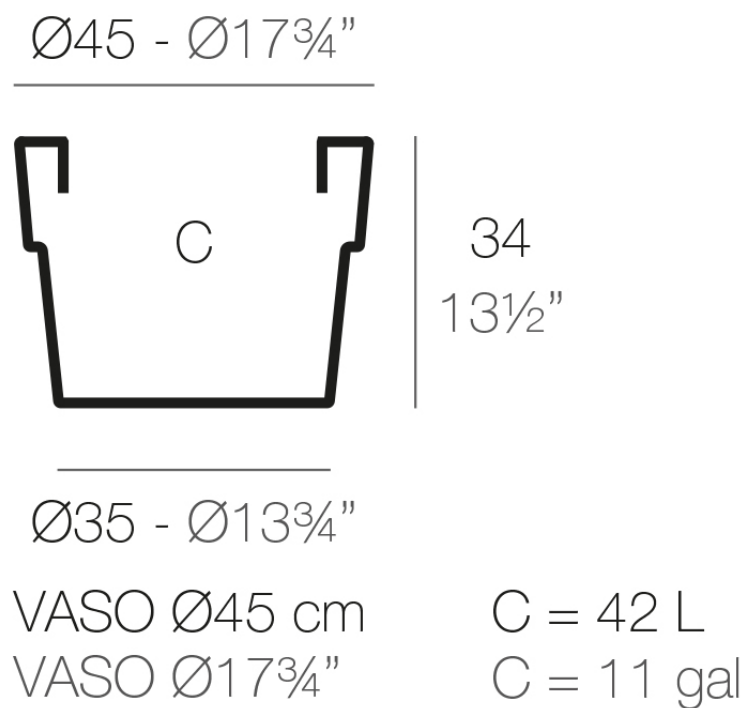


Info

Description

Pot made of polyethylene resin by rotational moulding. 100% Recyclable. Item suitable for indoor and outdoor use. Available in different finishes.

Weight: 0.5 Kg



Finishes

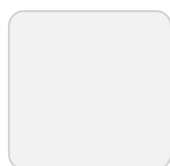
finishes

SIMPLE

Ref. 40245



orange



ice



notte blue



crema



green



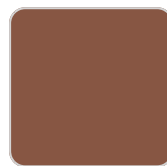
purjai red



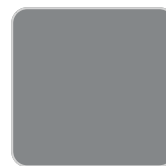
white



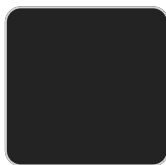
black



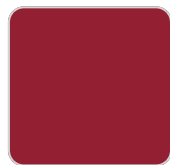
bronze



steel



anthracite



red



khaki



taupe



ecru



beige

Matt finishes pot one wall

LACQUERED

Ref. 40245F

VONDOM



purjai red



white



black



bronze



steel



anthracite



red



khaki



taupe



ecru



beige



modo green



champany

Lacquered Polyethylene

Vase ø50x38

The most extensive collection of indoor and outdoor planters designed by Studio Vondom. Timeless and minimalist designs that allow you to create unique and original atmospheres for homes, restaurants and any space.

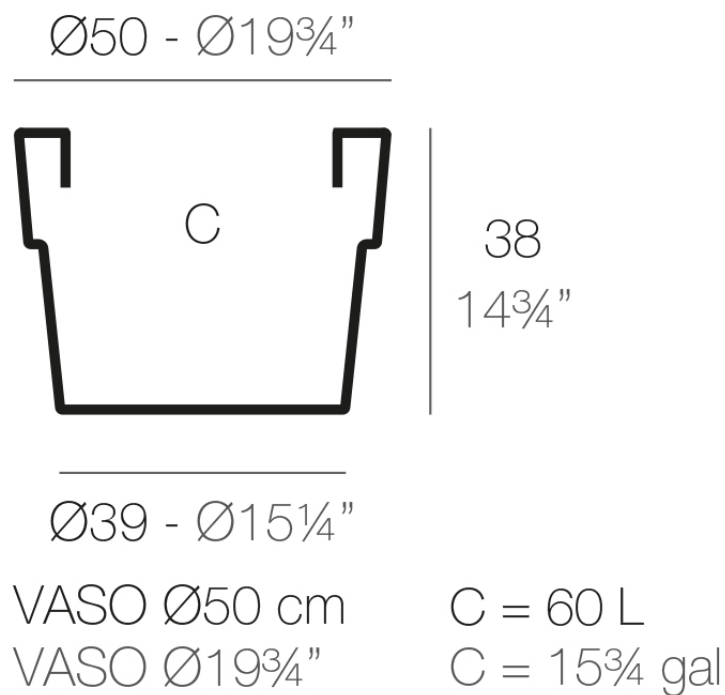


Info

Description

Pot made of polyethylene resin by rotational moulding. 100% Recyclable. Item suitable for indoor and outdoor use. Available in different finishes.

Weight: 1.3 Kg



Finishes

finishes

SIMPLE

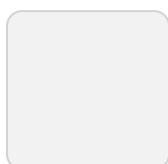
Ref. 40250



orange



notte blue



ice



crema



green



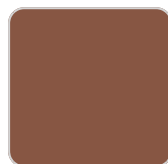
purjai red



white



black



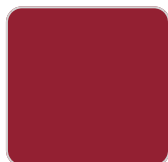
bronze



steel



anthracite



red



khaki



taupe



ecru



beige

Matt finishes pot one wall

LACQUERED

Ref. 40250F

VONDOM



purjai red



white



black



bronze



steel



anthracite



red



khaki



taupe



ecru



beige



modo green



champany

Lacquered Polyethylene

Vase ø60x46

The most extensive collection of indoor and outdoor planters designed by Studio Vondom. Timeless and minimalist designs that allow you to create unique and original atmospheres for homes, restaurants and any space.

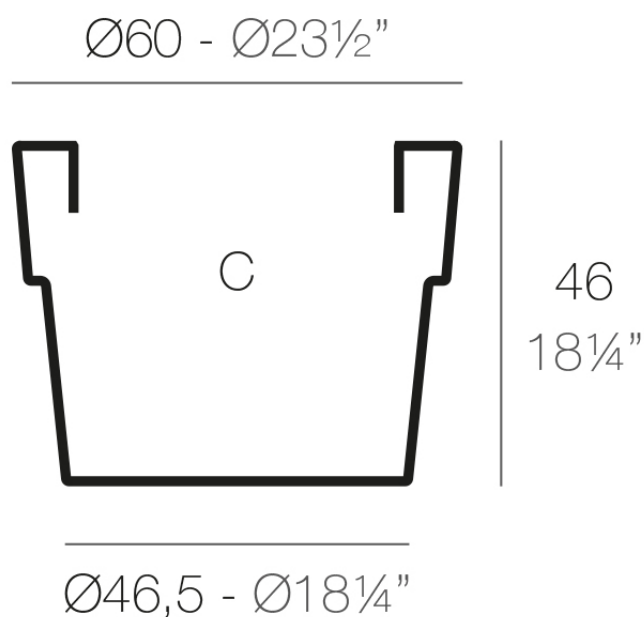


Info

Description

Pot made of polyethylene resin by rotational moulding. 100% Recyclable. Item suitable for indoor and outdoor use. Available in different finishes.

Weight: 2.1 Kg



VASO $\text{Ø}60$ cm

C = 100 L

VASO $\text{Ø}23\frac{1}{2}"$

C = $26\frac{1}{2}$ gal

Finishes

finishes

SIMPLE

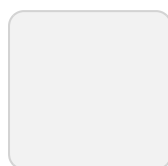
Ref. 40260



orange



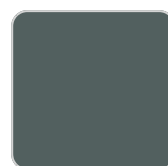
notte blue



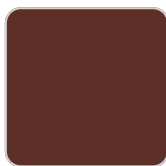
ice



crema



green



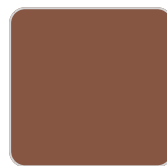
purjai red



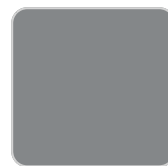
white



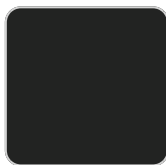
black



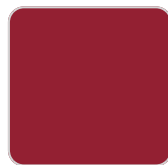
bronze



steel



anthracite



red



khaki



taupe



ecru



beige

Matt finishes pot one wall

LACQUERED

Ref. 40260F

VONDOM



purjai red



white



black



bronze



steel



anthracite



red



khaki



taupe



ecru



beige



modo green



champany

Lacquered Polyethylene

Vase ø80x61

The most extensive collection of indoor and outdoor planters designed by Studio Vondom. Timeless and minimalist designs that allow you to create unique and original atmospheres for homes, restaurants and any space.

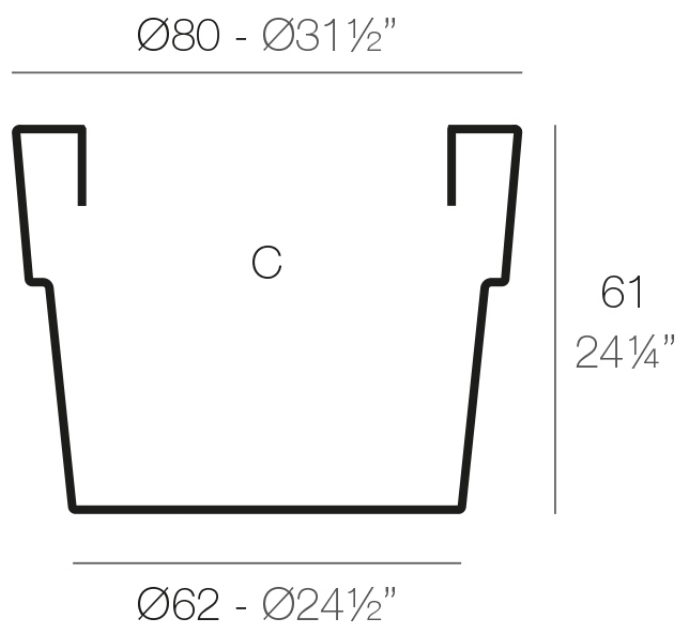


Info

Description

Pot made of polyethylene resin by rotational moulding. 100% Recyclable. Item suitable for indoor and outdoor use. Available in different finishes.

Weight: 8.5 Kg



VASO $\text{Ø}80$ cm

C = 230 L

VASO $\text{Ø}31\frac{1}{2}"$

C = 60 $\frac{3}{4}$ gal

Finishes

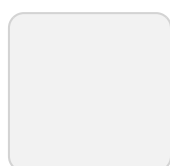
finishes

SIMPLE

Ref. 40280



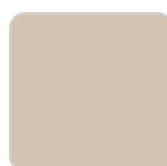
orange



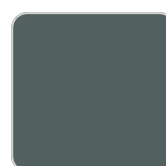
ice



notte blue



crema



green



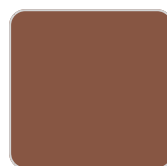
purjai red



white



black



bronze



steel



anthracite



red



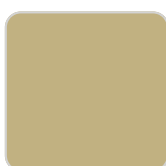
khaki



taupe



ecru



beige

Matt finishes pot one wall

LACQUERED

Ref. 40280F

VONDOM



purjai red



white



black



bronze



steel



anthracite



red



khaki



taupe



ecru



beige



modo green



champany

Lacquered Polyethylene

Vase ø120x91

The most extensive collection of indoor and outdoor planters designed by Studio Vondom. Timeless and minimalist designs that allow you to create unique and original atmospheres for homes, restaurants and any space.

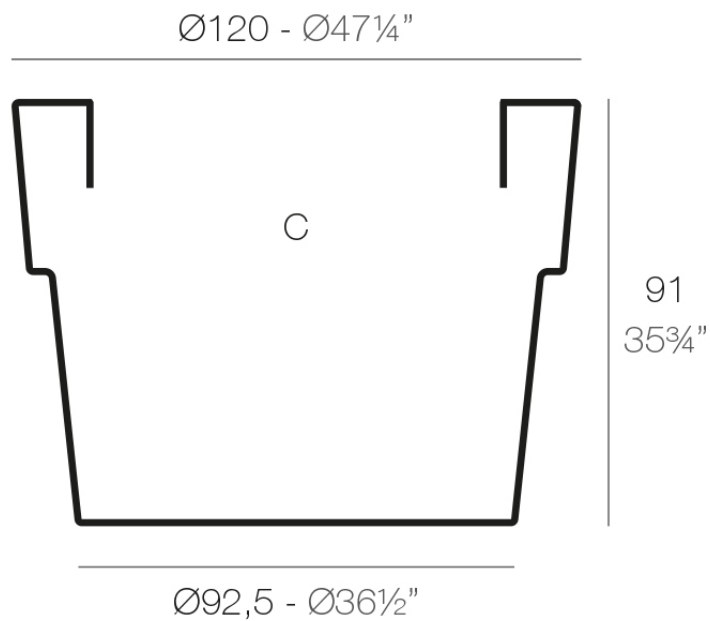


Info

Description

Pot made of polyethylene resin by rotational moulding. 100% Recyclable. Item suitable for indoor and outdoor use. Available in different finishes.

Weight: 22 Kg



VASO $\text{Ø}120$ cm C = 800 L
VASO $\text{Ø}47\frac{1}{4}"$ C = 211 $\frac{1}{4}$ gal

Finishes

finishes

SIMPLE

Ref. 40212



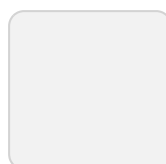
green



purjai red



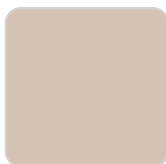
orange



ice



notte blue



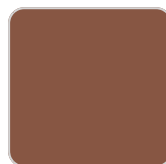
crema



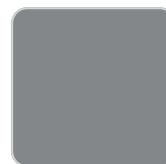
white



black



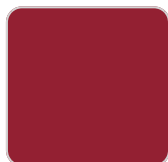
bronze



steel



anthracite



red



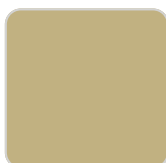
khaki



taupe



ecru



beige

Matt finishes pot one wall

LACQUERED

Ref. 40212F

VONDOM



purjai red



white



black



bronze



steel



anthracite



red



khaki



taupe



ecru



beige



modo green



champany

Lacquered Polyethylene

