

Bowl pot ø30x26

The most extensive collection of indoor and outdoor planters designed by Studio Vondom. Timeless and minimalist designs that allow you to create unique and original atmospheres for homes, restaurants and any space.

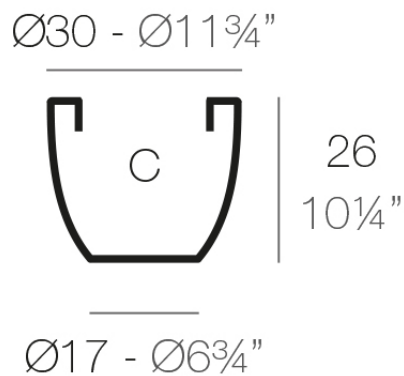


Info

Description

Pot made of polyethylene resin by rotational moulding. 100% Recyclable. Item suitable for indoor and outdoor use. Available in different finishes.

Weight: 0.8 Kg



CUENCO $\text{Ø}30$ cm
BOWL $\text{Ø}11\frac{3}{4}$ "

C = 15 L
C = 4 gal

Finishes

finishes

SIMPLE

Ref. 40730



purjai red



white



black



bronze



steel



anthracite



red



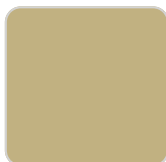
khaki



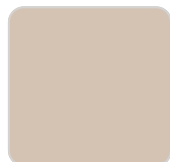
taupe



ecru



beige



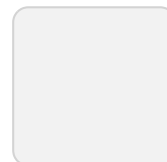
crema



green



orange



ice



notte blue

Matt finishes pot one wall

LACQUERED

Ref. 40730F

VONDOM



modo green



purjai red



white



black



bronze



steel



anthracite



champany



red



khaki



taupe



ecru



beige

Lacquered Polyethylene

Bowl pot ø40x35

The most extensive collection of indoor and outdoor planters designed by Studio Vondom. Timeless and minimalist designs that allow you to create unique and original atmospheres for homes, restaurants and any space.

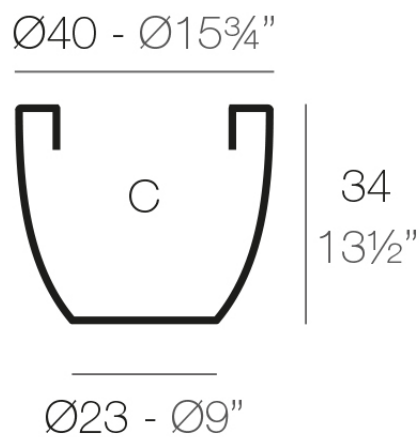


Info

Description

Pot made of polyethylene resin by rotational moulding. 100% Recyclable. Item suitable for indoor and outdoor use. Available in different finishes.

Weight: 1.8 Kg



CUENCO $\text{Ø}40$ cm
BOWL $\text{Ø}15\frac{3}{4}"$

C = 35 L
C = $9\frac{1}{4}$ gal

Finishes

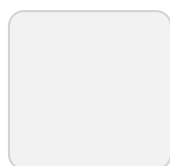
finishes

SIMPLE

Ref. 40740



orange



ice



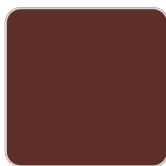
notte blue



crema



green



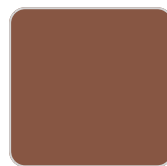
purjai red



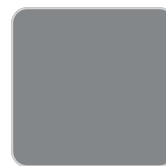
white



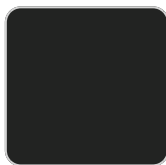
black



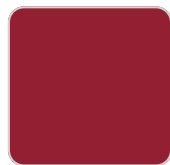
bronze



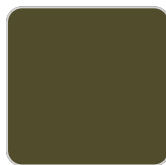
steel



anthracite



red



khaki



taupe



ecru



beige

Matt finishes pot one wall

LACQUERED

Ref. 40740F

VONDOM



purjai red



white



black



bronze



steel



anthracite



red



khaki



taupe



ecru



beige



modo green



champany

Lacquered Polyethylene

Bowl pot ø50x43

The most extensive collection of indoor and outdoor planters designed by Studio Vondom. Timeless and minimalist designs that allow you to create unique and original atmospheres for homes, restaurants and any space.

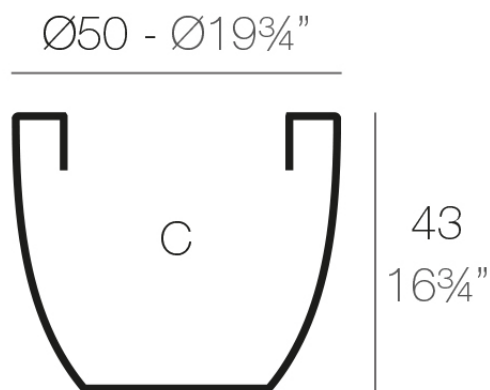


Info

Description

Pot made of polyethylene resin by rotational moulding. 100% Recyclable. Item suitable for indoor and outdoor use. Available in different finishes.

Weight: 2.9 Kg



$\text{Ø}28,5 - \text{Ø}11\frac{1}{4}"$

CUENCO $\text{Ø}50$ cm

BOWL $\text{Ø}19\frac{3}{4}"$

C = 70 L

C = $18\frac{1}{4}$ gal

Finishes

finishes

SIMPLE

Ref. 40750



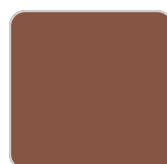
purjai red



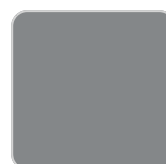
white



black



bronze



steel



anthracite



red



khaki



taupe



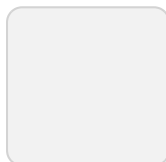
ecru



beige



orange



ice



notte blue



crema



green

Matt finishes pot one wall

LACQUERED

Ref. 40750F

VONDOM



modo green



purjai red



white



black



bronze



steel



anthracite



champany



red



khaki



taupe



ecru



beige

Lacquered Polyethylene

Bowl pot ø60x52

The most extensive collection of indoor and outdoor planters designed by Studio Vondom. Timeless and minimalist designs that allow you to create unique and original atmospheres for homes, restaurants and any space.

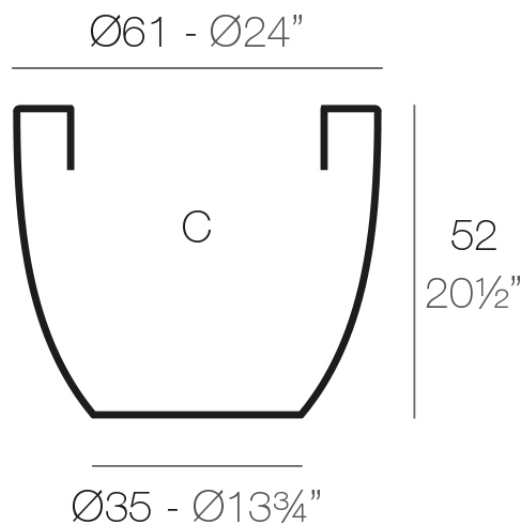


Info

Description

Pot made of polyethylene resin by rotational moulding. 100% Recyclable. Item suitable for indoor and outdoor use. Available in different finishes.

Weight: 4.2 Kg



CUENCO $\text{Ø}60$ cm
BOWL $\text{Ø}23\frac{1}{2}''$

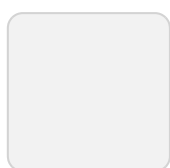
C = 120 L
C = $31\frac{3}{4}$ gal

Finishes

finishes

SIMPLE

Ref. 40760



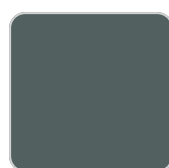
ice



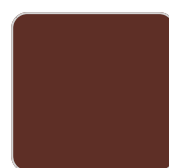
notte blue



crema



green



purjai red



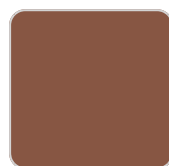
orange



white



black



bronze



steel



anthracite



red



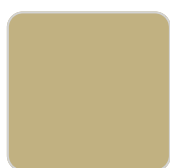
khaki



taupe



ecru



beige

Matt finishes pot one wall

LACQUERED

Ref. 40760F

VONDOM



purjai red



white



black



bronze



steel



anthracite



red



khaki



taupe



ecru



beige



modo green



champany

Lacquered Polyethylene

Bowl pot ø80x69

The most extensive collection of indoor and outdoor planters designed by Studio Vondom. Timeless and minimalist designs that allow you to create unique and original atmospheres for homes, restaurants and any space.

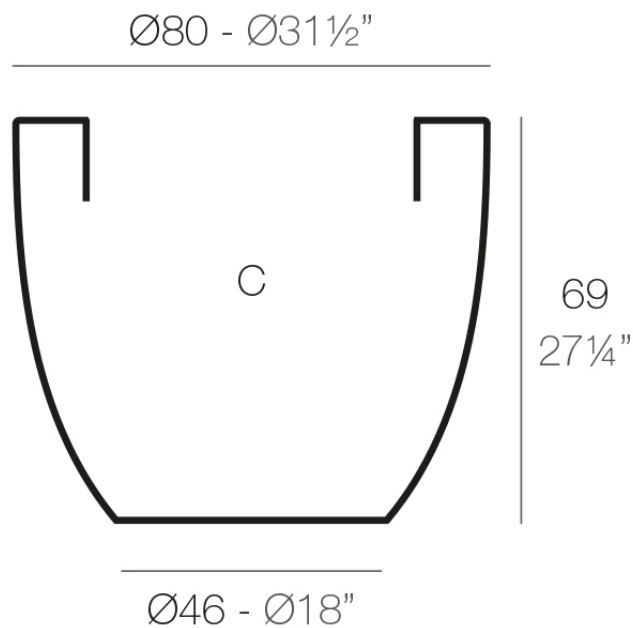


Info

Description

Pot made of polyethylene resin by rotational moulding. 100% Recyclable. Item suitable for indoor and outdoor use. Available in different finishes.

Weight: 8 Kg



CUENCO $\text{Ø}80$ cm

BOWL $\text{Ø}31\frac{1}{2}"$

C = 280 L

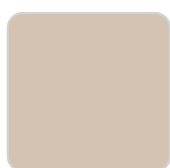
C = 74 gal

Finishes

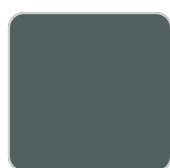
finishes

SIMPLE

Ref. 40780



crema



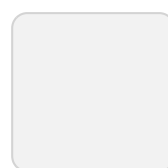
green



purjai red



orange



ice



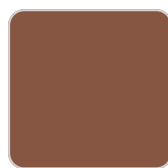
notte blue



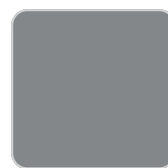
white



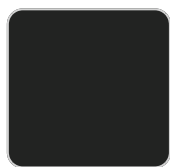
black



bronze



steel



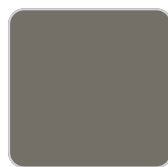
anthracite



red



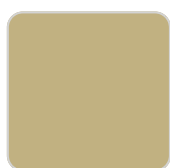
khaki



taupe



ecru



beige

Matt finishes pot one wall

LACQUERED

Ref. 40780F

VONDOM



purjai red



white



black



bronze



steel



anthracite



red



khaki



taupe



ecru



beige



modo green



champany

Lacquered Polyethylene

Bowl pot ø120x104

The most extensive collection of indoor and outdoor planters designed by Studio Vondom. Timeless and minimalist designs that allow you to create unique and original atmospheres for homes, restaurants and any space.

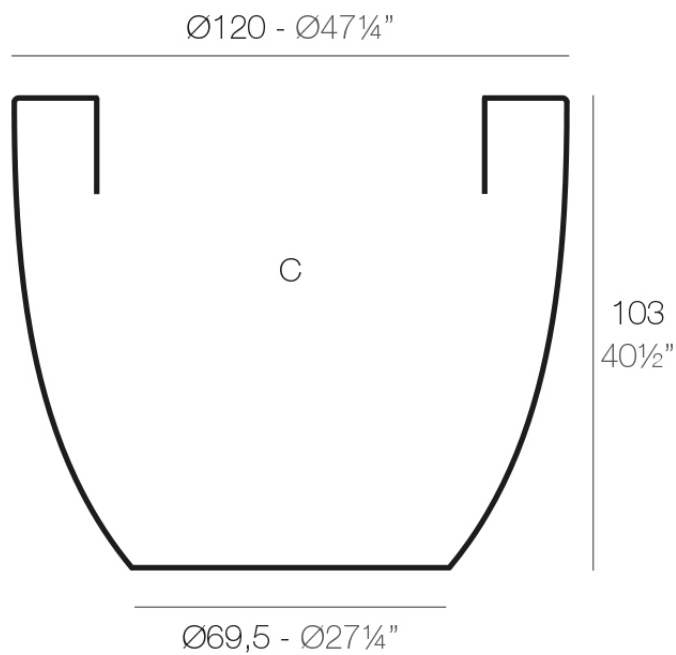


Info

Description

Pot made of polyethylene resin by rotational moulding. 100% Recyclable. Item suitable for indoor and outdoor use. Available in different finishes.

Weight: 22 Kg



CUENCO $\text{Ø}120$ cm
BOWL $\text{Ø}47\frac{1}{4}"$

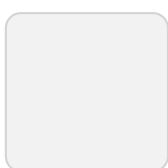
C = 950 L
C = 251 gal

Finishes

finishes

SIMPLE

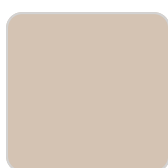
Ref. 40712



ice



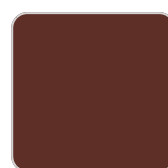
notte blue



crema



green



purjai red



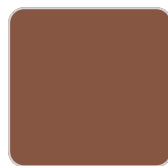
orange



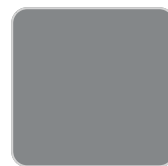
white



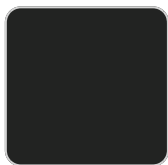
black



bronze



steel



anthracite



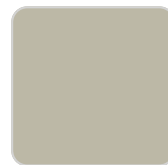
red



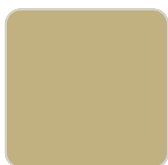
khaki



taupe



ecru



beige

Matt finishes pot one wall

LACQUERED

Ref. 40712F

VONDOM



purjai red



white



black



bronze



steel



anthracite



red



khaki



taupe



ecru



beige



modo green



champany

Lacquered Polyethylene

