

## Half cylinder pot 50x29x55

The most extensive collection of indoor and outdoor planters designed by Studio Vondom. Timeless and minimalist designs that allow you to create unique and original atmospheres for homes, restaurants and any space.



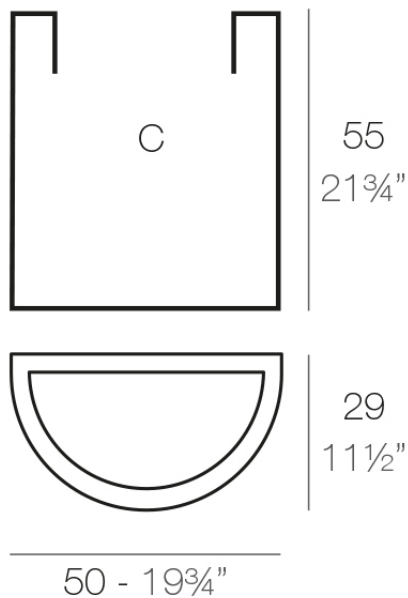
## Info

---

### Description

Pot made of polyethylene resin by rotational moulding. 100% Recyclable. Item suitable for indoor and outdoor use. Available in different finishes.

Weight: 1.9 Kg



MEDIO CILINDRO 50 x 55 cm      C = 65 L 55 cm  
MEDIO CILINDRO 19 3/4" x 21 3/4"      C = 17 1/2 gal

## Finishes

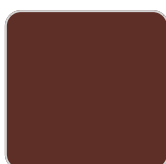
---

### finishes

---

#### SIMPLE

Ref. 40950



purjai red



white



black



bronze



steel



anthracite



red



khaki



taupe



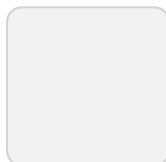
ecru



beige



orange



ice



notte blue



crema



green

Matt finishes pot one wall

#### LACQUERED

Ref. 40950F

# VONDOM



modo green



purjai red



white



black



bronze



steel



anthracite



champany



red



khaki



taupe



ecru



beige

Lacquered Polyethylene

## Angular pot

The most extensive collection of indoor and outdoor planters designed by Studio Vondom. Timeless and minimalist designs that allow you to create unique and original atmospheres for homes, restaurants and any space.



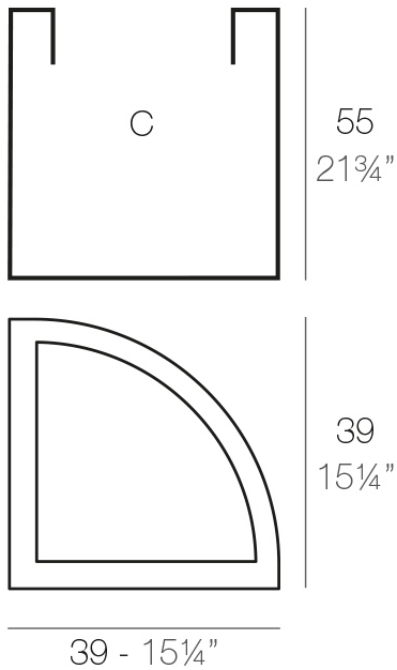
## Info

---

### Description

Pot made of polyethylene resin by rotational moulding. 100% Recyclable. Item suitable for indoor and outdoor use. Available in different finishes.

Weight: 1.9 Kg



ANGULAR 39 x 55 cm      C = 70 L 5 cm  
ANGULAR 15<sup>1</sup>/<sub>4</sub>" x 21<sup>3</sup>/<sub>4</sub>"      C = 18<sup>1</sup>/<sub>2</sub> gal

## Finishes

---

### finishes

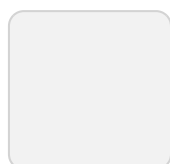
---

#### SIMPLE

Ref. 41070



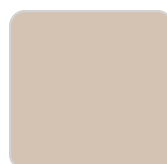
orange



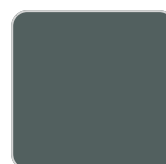
ice



notte blue



crema



green



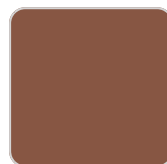
purjai red



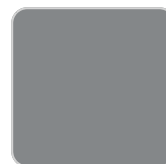
white



black



bronze



steel



anthracite



red



khaki



taupe



ecru



beige

Matt finishes pot one wall

#### LACQUERED

Ref. 41070F

# VONDOM



purjai red



white



black



bronze



steel



anthracite



red



khaki



taupe



ecru



beige



modo green



champany

Lacquered Polyethylene