

Stone planter 80x65x40

by Stefano Giovannoni & Elisa Gargan

Stones outdoor furniture collection, designed by Stefano Giovannoni, convinces with its organic shapes. As its name suggests it appears to be found in nature itself, creating synergism between the natural and the artificial landscape. Stones can fit perfectly into any environment, transmitting its own particular elegance, thanks to its material, as well as its original shape.

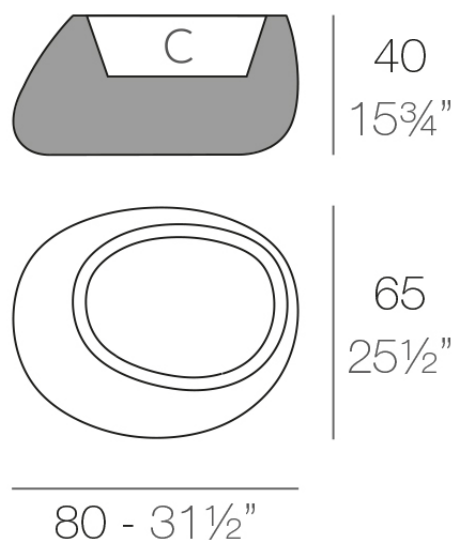


Info

Description

Pot made of polyethylene resin by rotational moulding. 100% Recyclable.
Item suitable for indoor and outdoor use. Available in different finishes.

Weight: 8 Kg



STONE Macetero 40
STONE Planter 40

C = 32 L
C = 8 1/2 gal

Finishes

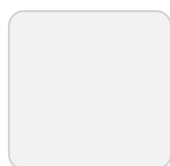
finishes

BASIC

Ref. 55008A



notte blue



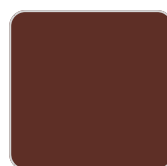
ice



crema



green



purjai red



orange



white



black



bronze



steel



anthracite



red



khaki



taupe



ecru



beige

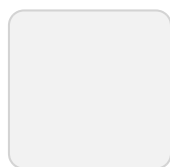
Matt Polyethylene

SELF-WATERING

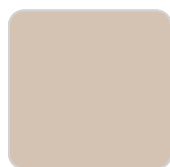
Ref. 55008R



notte blue



ice



crema



green



purjai red



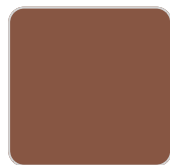
orange



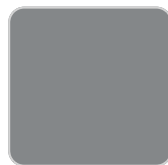
white



black



bronze



steel



anthracite



red



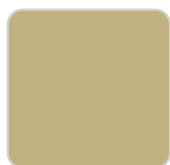
khaki



taupe



ecru



beige

Self-watering system included in all planters except those with basic finish

LACQUERED

Ref. 55008F



purjai red



white



black



bronze



steel



anthracite



red



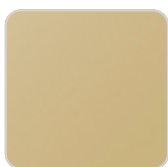
khaki



taupe



ecru



beige



modo green



champany

Lacquered Polyethylene

lighting

WHITE LED

Ref. 55008W



ice

White internally lit unit with LED technology. Available only in matte ice white finish.

RGBW LED

Ref. 55008L



ice

Unit with internal lighting with RGBW LED technology and remote control unit for switching colors. Available only in matte ice white finish. Remote control included.

RGBW LED DMX

Ref. 55008D



ice

Unit with internal lighting with RGBW LED technology and remote control unit for switching colors. Also controlled by DMX-1024 (wireless), enabling communication between one or more products simultaneously via the DMX transmitter (not included). There are two options to choose from: Professional XLR DMX and Home WIFI DMX. (Remote control included). Optional battery

RGBW LED BATTERY

Ref. 55008Y



ice

Unit with internal lighting with battery-powered RGBW LED technology. Includes charger and remote control for switching colors and charger. Available only in matte ice white finish.

RGBW LED DMX BATTERY

Ref. 55008DY



ice

Unit with internal lighting with RGBW LED technology and remote control unit for switching colors. Also controlled by DMX-1024 (wireless), enabling communication between one or more products simultaneously via the DMX transmitter (not included). There are two options to choose from: Professional XLR

DMX and Home WIFI DMX. (Remote control included).

Ambients



Stone planter 60x46x70

by Stefano Giovannoni & Elisa Gargan

Stones outdoor furniture collection, designed by Stefano Giovannoni, convinces with its organic shapes. As its name suggests it appears to be found in nature itself, creating synergism between the natural and the artificial landscape. Stones can fit perfectly into any environment, transmitting its own particular elegance, thanks to its material, as well as its original shape.

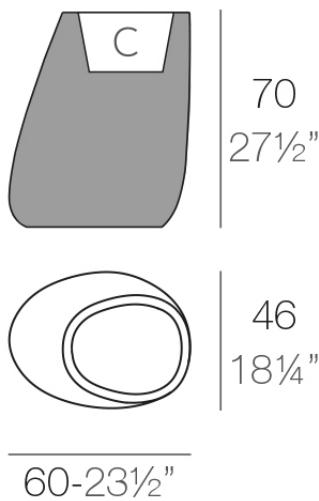


Info

Description

Pot made of polyethylene resin by rotational moulding. 100% Recyclable.
Item suitable for indoor and outdoor use. Available in different finishes.

Weight: 8 Kg



STONE Macetero 70	C = 20 L	29 x 28 cm
STONE Planter 70	C = 5½ gal	14 x 10 1/4"

Finishes

finishes

BASIC

Ref. 55009A



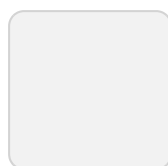
purjai red



orange



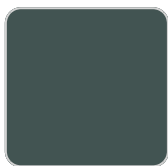
notte blue



ice



crema



green



white



black



bronze



steel



anthracite



red



khaki



taupe



ecru

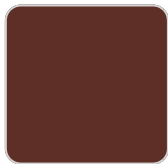


beige

Matt Polyethylene

SELF-WATERING

Ref. 55009R



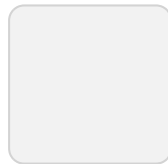
purjai red



orange



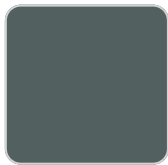
notte blue



ice



crema



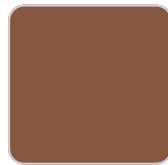
green



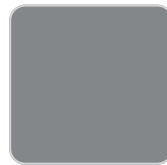
white



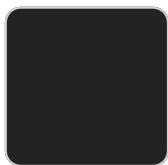
black



bronze



steel



anthracite



red



khaki



taupe



ecru



beige

Self-watering system included in all planters except those with basic finish

LACQUERED

Ref. 55009F



purjai red



white



black



bronze



steel



anthracite



red



khaki



taupe



ecru



beige



modo green



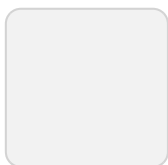
champany

Lacquered Polyethylene

lighting

WHITE LED

Ref. 55009W

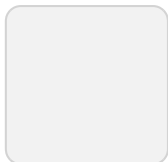


ice

White internally lit unit with LED technology. Available only in matte ice white finish.

RGBW LED

Ref. 55009L



ice

Unit with internal lighting with RGBW LED technology and remote control unit for switching colors. Available only in matte ice white finish. Remote control included.

RGBW LED DMX

Ref. 55009D



ice

Unit with internal lighting with RGBW LED technology and remote control unit for switching colors. Also controlled by DMX-1024 (wireless), enabling communication between one or more products simultaneously via the DMX transmitter (not included). There are two options to choose from: Professional XLR DMX and Home WIFI DMX. (Remote control included). Optional battery

RGBW LED BATTERY

Ref. 55009Y



ice

Unit with internal lighting with battery-powered RGBW LED technology. Includes charger and remote control for switching colors and charger. Available only in matte ice white finish.

RGBW LED DMX BATTERY

Ref. 55009DY



ice

Unit with internal lighting with RGBW LED technology and remote control unit for switching colors. Also controlled by DMX-1024 (wireless), enabling communication between one or more products simultaneously via the DMX transmitter (not included). There are two options to choose from: Professional XLR

DMX and Home WIFI DMX. (Remote control included).

Ambients



Stone planter 86x64x100

by Stefano Giovannoni & Elisa Gargan

Stones outdoor furniture collection, designed by Stefano Giovannoni, convinces with its organic shapes. As its name suggests it appears to be found in nature itself, creating synergism between the natural and the artificial landscape. Stones can fit perfectly into any environment, transmitting its own particular elegance, thanks to its material, as well as its original shape.

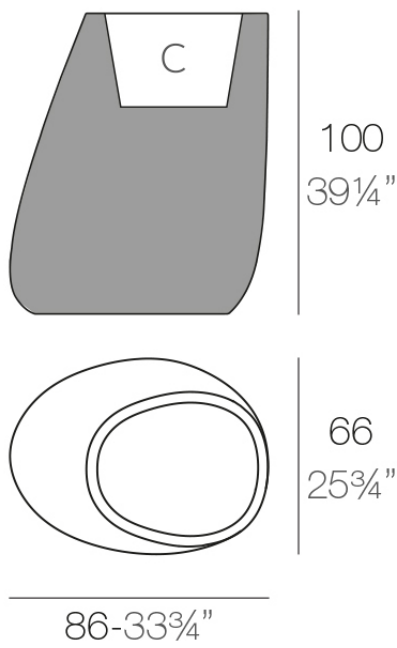


Info

Description

Pot made of polyethylene resin by rotational moulding. 100% Recyclable.
Item suitable for indoor and outdoor use. Available in different finishes.

Weight: 16 Kg



STONE Macetero 100 C = 52 L 41 x 39 cm
STONE Planter 100 C = 13 $\frac{1}{2}$ gal 31" x 15 $\frac{1}{4}$ "

Finishes

finishes

BASIC

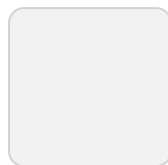
Ref. 55010A



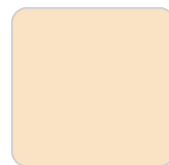
orange



notte blue



ice



crema



green



purjai red



white



black



bronze



steel



anthracite



red



khaki



taupe



ecru



beige

Matt Polyethylene

SELF-WATERING

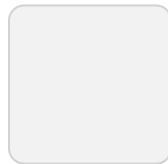
Ref. 55010R



orange



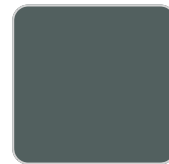
notte blue



ice



crema



green



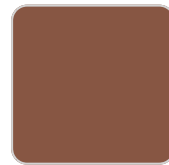
purjai red



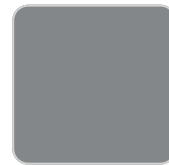
white



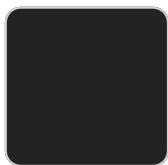
black



bronze



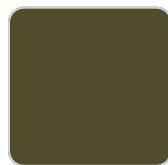
steel



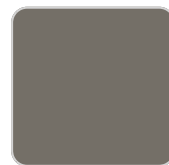
anthracite



red



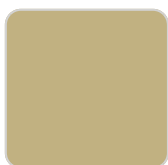
khaki



taupe



ecru



beige

Self-watering system included in all planters except those with basic finish

LACQUERED

Ref. 55010F



purjai red



white



black



bronze



steel



anthracite



red



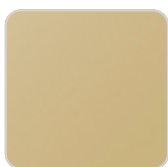
khaki



taupe



ecru



beige



modo green



champany

Lacquered Polyethylene

lighting

WHITE LED

Ref. 55010W



ice

White internally lit unit with LED technology. Available only in matte ice white finish.

RGBW LED

Ref. 55010L



ice

Unit with internal lighting with RGBW LED technology and remote control unit for switching colors. Available only in matte ice white finish. Remote control included.

RGBW LED DMX

Ref. 55010D



ice

Unit with internal lighting with RGBW LED technology and remote control unit for switching colors. Also controlled by DMX-1024 (wireless), enabling communication between one or more products simultaneously via the DMX transmitter (not included). There are two options to choose from: Professional XLR DMX and Home WIFI DMX. (Remote control included). Optional battery

RGBW LED BATTERY

Ref. 55010Y



ice

Unit with internal lighting with battery-powered RGBW LED technology. Includes charger and remote control for switching colors and charger. Available only in matte ice white finish.

RGBW LED DMX BATTERY

Ref. 55010DY



ice

Unit with internal lighting with RGBW LED technology and remote control unit for switching colors. Also controlled by DMX-1024 (wireless), enabling communication between one or more products simultaneously via the DMX transmitter (not included). There are two options to choose from: Professional XLR

DMX and Home WIFI DMX. (Remote control included).

Ambients



Stone planter 105x84x120

by Stefano Giovannoni & Elisa Gargan

Stones outdoor furniture collection, designed by Stefano Giovannoni, convinces with its organic shapes. As its name suggests it appears to be found in nature itself, creating synergism between the natural and the artificial landscape. Stones can fit perfectly into any environment, transmitting its own particular elegance, thanks to its material, as well as its original shape.

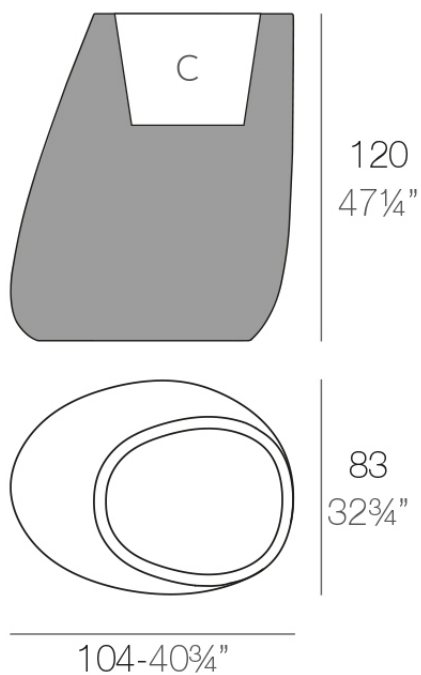


Info

Description

Pot made of polyethylene resin by rotational moulding. 100% Recyclable.
Item suitable for indoor and outdoor use. Available in different finishes.

Weight: 25 Kg



STONE Macetero 120

STONE Planter 120

C = 105 L x 46 cm

C = 27 $\frac{1}{2}$ gal x 18"

Finishes

finishes

BASIC

Ref. 55011A



notte blue



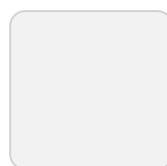
crema



green



purjai red



ice



orange



white



black



bronze



steel



anthracite



red



khaki



taupe



ecru



beige

Matt Polyethylene

SELF-WATERING

Ref. 55011R



notte blue



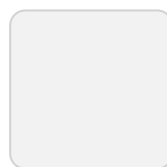
crema



green



purjai red



ice



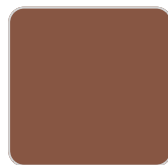
orange



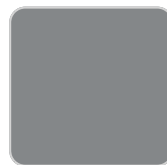
white



black



bronze



steel



anthracite



red



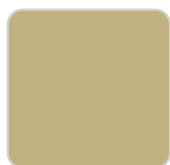
khaki



taupe



ecru



beige

Self-watering system included in all planters except those with basic finish

LACQUERED

Ref. 55011F



purjai red



white



black



bronze



steel



anthracite



red



khaki



taupe



ecru



beige



modo green



champany

Lacquered Polyethylene

lighting

WHITE LED

Ref. 55011W



ice

White internally lit unit with LED technology. Available only in matte ice white finish.

RGBW LED

Ref. 55011L



ice

Unit with internal lighting with RGBW LED technology and remote control unit for switching colors. Available only in matte ice white finish. Remote control included.

RGBW LED DMX

Ref. 55011D



ice

Unit with internal lighting with RGBW LED technology and remote control unit for switching colors. Also controlled by DMX-1024 (wireless), enabling communication between one or more products simultaneously via the DMX transmitter (not included). There are two options to choose from: Professional XLR DMX and Home WIFI DMX. (Remote control included). Optional battery

RGBW LED BATTERY

Ref. 55011Y



ice

Unit with internal lighting with battery-powered RGBW LED technology. Includes charger and remote control for switching colors and charger. Available only in matte ice white finish.

RGBW LED DMX BATTERY

Ref. 55011DY



ice

Unit with internal lighting with RGBW LED technology and remote control unit for switching colors. Also controlled by DMX-1024 (wireless), enabling communication between one or more products simultaneously via the DMX transmitter (not included). There are two options to choose from: Professional XLR

DMX and Home WIFI DMX. (Remote control included).

Ambients



Stone planter 140x105x140

by Stefano Giovannoni & Elisa Gargan

Stones outdoor furniture collection, designed by Stefano Giovannoni, convinces with its organic shapes. As its name suggests it appears to be found in nature itself, creating synergism between the natural and the artificial landscape. Stones can fit perfectly into any environment, transmitting its own particular elegance, thanks to its material, as well as its original shape.

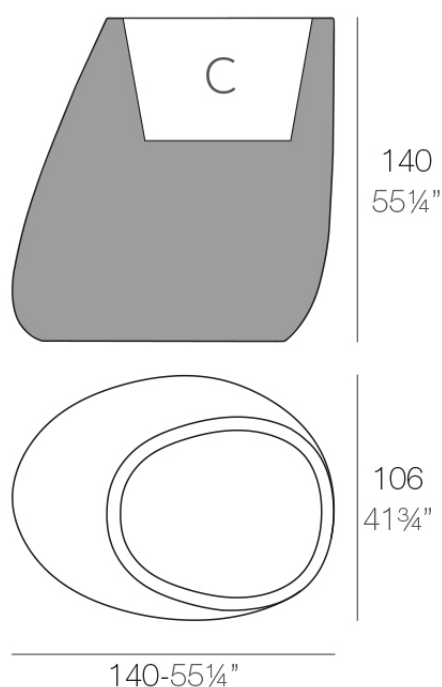


Info

Description

Pot made of polyethylene resin by rotational moulding. 100% Recyclable.
Item suitable for indoor and outdoor use. Available in different finishes.

Weight: 42 Kg



STONE Macetero XL C = 252 L x 62 cm
STONE Planter XL C = 66½ gal 17 x 24 1/2"

Finishes

finishes

BASIC

Ref. 55012A



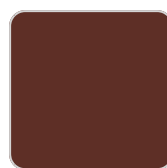
notte blue



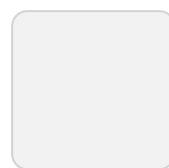
crema



green



purjai red



ice



orange



white



black



bronze



steel



anthracite



red



khaki



taupe



ecru



beige

Matt Polyethylene

SELF-WATERING

Ref. 55012R



notte blue



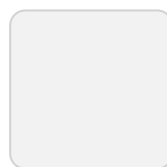
crema



green



purjai red



ice



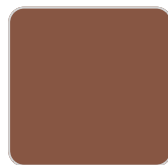
orange



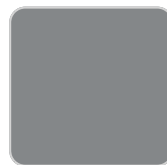
white



black



bronze



steel



anthracite



red



khaki



taupe



ecru



beige

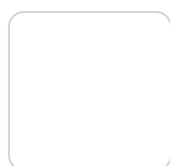
Self-watering system included in all planters except those with basic finish

LACQUERED

Ref. 55012F



purjai red



white



black



bronze



steel



anthracite



red



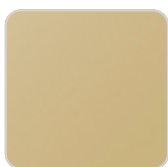
khaki



taupe



ecru



beige



modo green



champany

Lacquered Polyethylene

lighting

WHITE LED

Ref. 55012W



ice

White internally lit unit with LED technology. Available only in matte ice white finish.

RGBW LED

Ref. 55012L



ice

Unit with internal lighting with RGBW LED technology and remote control unit for switching colors. Available only in matte ice white finish. Remote control included.

RGBW LED DMX

Ref. 55012D



ice

Unit with internal lighting with RGBW LED technology and remote control unit for switching colors. Also controlled by DMX-1024 (wireless), enabling communication between one or more products simultaneously via the DMX transmitter (not included). There are two options to choose from: Professional XLR DMX and Home WIFI DMX. (Remote control included). Optional battery

RGBW LED BATTERY

Ref. 55012Y



ice

Unit with internal lighting with battery-powered RGBW LED technology. Includes charger and remote control for switching colors and charger. Available only in matte ice white finish.

RGBW LED DMX BATTERY

Ref. 55012DY



ice

Unit with internal lighting with RGBW LED technology and remote control unit for switching colors. Also controlled by DMX-1024 (wireless), enabling communication between one or more products simultaneously via the DMX transmitter (not included). There are two options to choose from: Professional XLR

DMX and Home WIFI DMX. (Remote control included).

Ambients

