

Noma table

by Javier Mariscal

The Noma Collection, designed by Javier Mariscal for the Spanish brand Vondom, is a group of outdoor items. There was an aim to create a new typology of furniture by combining the functions of a flowerpot and an outdoor table, and thus Noma was born, a collection **characterized by its originality and versatile nature**.

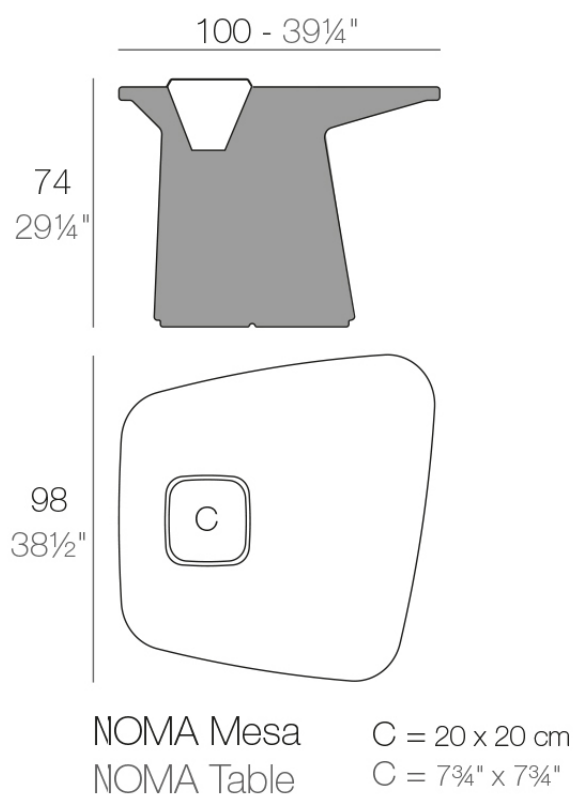


Info

Description

Made of polyethylene resin by rotational moulding. 100% Recyclable. Item suitable for indoor and outdoor use. Available in different finishes.

Weight: 22 Kg



Accessories

- **ICE BUCKET**

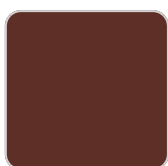
Ice bucket

Finishes

finishes

BASIC

Ref. 45100A



purjai red



white



black



bronze



steel



anthracite



red



khaki



taupe



ecru



beige



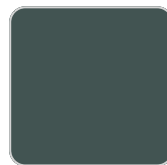
orange



notte blue



crema



green

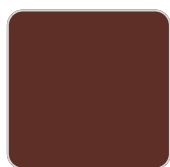


ice

Matt Polyethylene

SELF-WATERING

Ref. 45100R



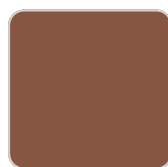
purjai red



white



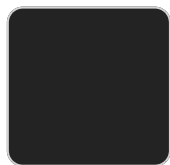
black



bronze



steel



anthracite



red



khaki



taupe



ecru



beige



orange



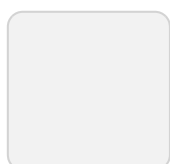
notte blue



crema



green



ice

Self-watering system included in all planters except those with basic finish

LACQUERED

Ref. 45100F



modo green



purjai red



white



black



bronze



steel



anthracite



champany



red



khaki



taupe



ecru



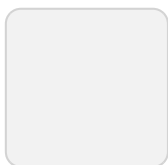
beige

Lacquered Polyethylene

lighting

WHITE LED

Ref. 45100W

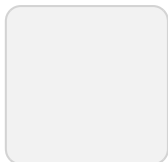


ice

White internally lit unit with LED technology. Available only in matte ice white finish.

RGBW LED

Ref. 45100L



ice

Unit with internal lighting with RGBW LED technology and remote control unit for switching colors. Available only in matte ice white finish. Remote control included.

RGBW LED DMX

Ref. 45100D



ice

Unit with internal lighting with RGBW LED technology and remote control unit for switching colors. Also controlled by DMX-1024 (wireless), enabling communication between one or more products simultaneously via the DMX transmitter (not included). There are two options to choose from: Professional XLR DMX and Home WIFI DMX. (Remote control included). Optional battery

RGBW LED BATTERY

Ref. 45100Y



ice

Unit with internal lighting with battery-powered RGBW LED technology. Includes charger and remote control for switching colors and charger. Available only in matte ice white finish.

RGBW LED DMX BATTERY

Ref. 45100DY



ice

Unit with internal lighting with RGBW LED technology and remote control unit for switching colors. Also controlled by DMX-1024 (wireless), enabling communication between one or more products simultaneously via the DMX transmitter (not included). There are two options to choose from: Professional XLR

DMX and Home WIFI DMX. (Remote control included).

Ambients

