

Noma planter low

by Javier Mariscal

The Noma Collection, designed by **Javier Mariscal** for the Spanish brand **Vondom**, is a group of outdoor items. There was an aim to create a new typology of furniture by combining the functions of a flowerpot and an outdoor table, and thus NOMA was born, a collection **characterized by its originality and versatile nature.**

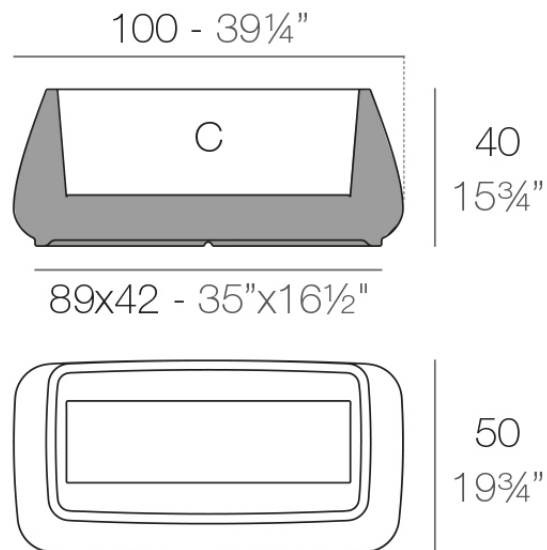


Info

Description

Pot made of polyethylene resin by rotational moulding. 100% Recyclable. Item suitable for indoor and outdoor use. Available in different finishes.

Weight: 10 Kg



Macetero Low
Low Planter

C = 76,5 L
C = 20 1/4 gal

Finishes

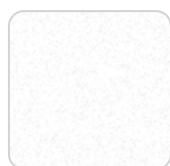
finishes

BASIC

Ref. 45006A



purjai red



white



black



bronze



steel



anthracite



red



khaki



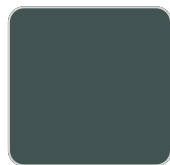
taupe



ecru



beige



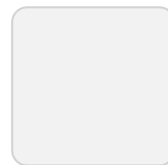
green



orange



notte blue



ice



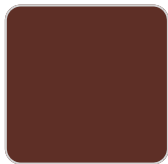
crema

Matt Polyethylene

SELF-WATERING

Ref. 45006R

VONDOM



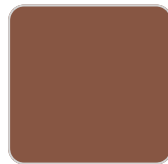
purjai red



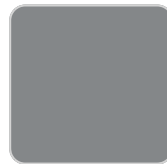
white



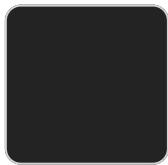
black



bronze



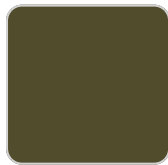
steel



anthracite



red



khaki



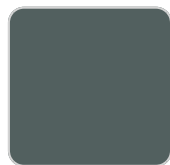
taupe



ecru



beige



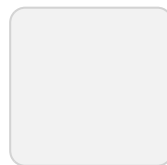
green



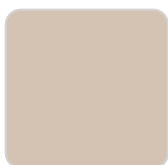
orange



notte blue



ice



crema

Self-watering system included in all planters except those with basic finish

LACQUERED

Ref. 45006F



modo green



purjai red



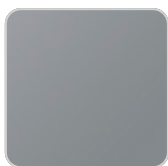
white



black



bronze



steel



anthracite



champany



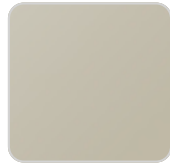
red



khaki



taupe



ecru



beige

Lacquered Polyethylene

lighting

WHITE LED

Ref. 45006W

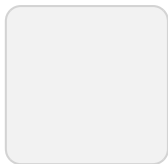


ice

White internally lit unit with LED technology. Available only in matte ice white finish.

RGBW LED

Ref. 45006L



ice

Unit with internal lighting with RGBW LED technology and remote control unit for switching colors. Available only in matte ice white finish. Remote control included.

RGBW LED DMX

Ref. 45006D



ice

Unit with internal lighting with RGBW LED technology and remote control unit for switching colors. Also controlled by DMX-1024 (wireless), enabling communication between one or more products simultaneously via the DMX transmitter (not included). There are two options to choose from: Professional XLR DMX and Home WIFI DMX. (Remote control included). Optional battery

RGBW LED BATTERY

Ref. 45006Y

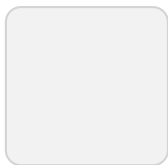


ice

Unit with internal lighting with battery-powered RGBW LED technology. Includes charger and remote control for switching colors and charger. Available only in matte ice white finish.

RGBW LED DMX BATTERY

Ref. 45006DY



ice

Unit with internal lighting with RGBW LED technology and remote control unit for switching colors. Also controlled by DMX-1024 (wireless), enabling communication between one or more products simultaneously via the DMX transmitter (not included). There are two options to choose from: Professional XLR

VONDOM

DMX and Home WIFI DMX. (Remote control included).

Noma planter medium

by Javier Mariscal

The Noma Collection, designed by **Javier Mariscal** for the Spanish brand **Vondom**, is a group of outdoor items. There was an aim to create a new typology of furniture by combining the functions of a flowerpot and an outdoor table, and thus NOMA was born, a collection **characterized by its originality and versatile nature.**

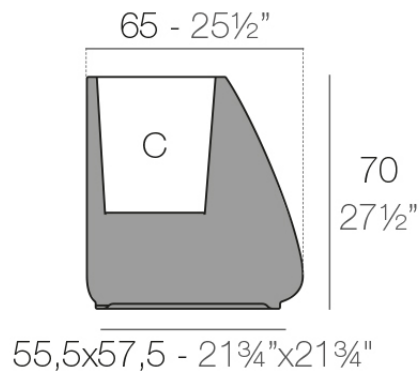


Info

Description

Pot made of polyethylene resin by rotational moulding. 100% Recyclable. Item suitable for indoor and outdoor use. Available in different finishes.

Weight: 11 Kg



Macetero Medium
Medium Planter

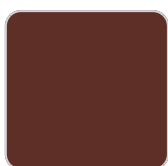
C = 48 L
C = 12¾ gal

Finishes

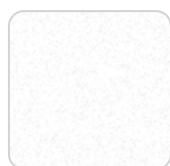
finishes

BASIC

Ref. 45004A



purjai red



white



black



bronze



steel



anthracite



red



khaki



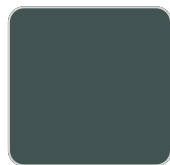
taupe



ecru



beige



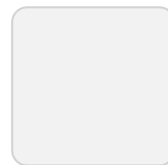
green



orange



notte blue



ice



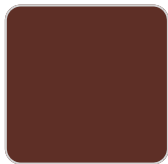
crema

Matt Polyethylene

SELF-WATERING

Ref. 45004R

VONDOM



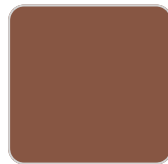
purjai red



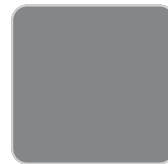
white



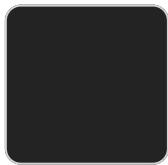
black



bronze



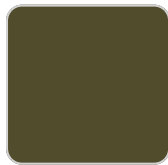
steel



anthracite



red



khaki



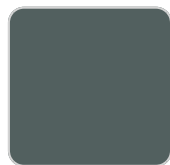
taupe



ecru



beige



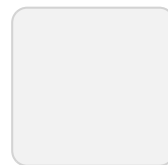
green



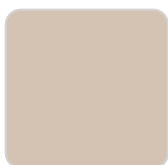
orange



notte blue



ice



crema

Self-watering system included in all planters except those with basic finish

LACQUERED

Ref. 45004F



modo green



purjai red



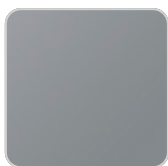
white



black



bronze



steel



anthracite



champany



red



khaki



taupe



ecru



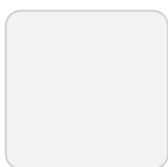
beige

Lacquered Polyethylene

lighting

WHITE LED

Ref. 45004W



ice

White internally lit unit with LED technology. Available only in matte ice white finish.

RGBW LED

Ref. 45004L



ice

Unit with internal lighting with RGBW LED technology and remote control unit for switching colors. Available only in matte ice white finish. Remote control included.

RGBW LED DMX

Ref. 45004D



ice

Unit with internal lighting with RGBW LED technology and remote control unit for switching colors. Also controlled by DMX-1024 (wireless), enabling communication between one or more products simultaneously via the DMX transmitter (not included). There are two options to choose from: Professional XLR DMX and Home WIFI DMX. (Remote control included). Optional battery

RGBW LED BATTERY

Ref. 45004Y

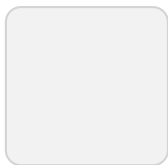


ice

Unit with internal lighting with battery-powered RGBW LED technology. Includes charger and remote control for switching colors and charger. Available only in matte ice white finish.

RGBW LED DMX BATTERY

Ref. 45004DY



ice

Unit with internal lighting with RGBW LED technology and remote control unit for switching colors. Also controlled by DMX-1024 (wireless), enabling communication between one or more products simultaneously via the DMX transmitter (not included). There are two options to choose from: Professional XLR

VONDOM

DMX and Home WIFI DMX. (Remote control included).

Ambients



Noma planter high

by Javier Mariscal

The Noma Collection, designed by **Javier Mariscal** for the Spanish brand **Vondom**, is a group of outdoor items. There was an aim to create a new typology of furniture by combining the functions of a flowerpot and an outdoor table, and thus NOMA was born, a collection **characterized by its originality and versatile nature.**

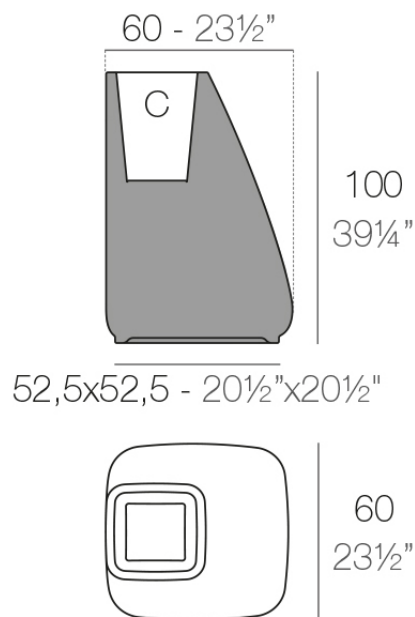


Info

Description

Pot made of polyethylene resin by rotational moulding. 100% Recyclable. Item suitable for indoor and outdoor use. Available in different finishes.

Weight: 12 Kg



Macetero High C = 29 L
High Planter C = 7 3/4 gal

Finishes

finishes

BASIC

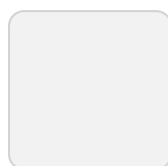
Ref. 45005A



orange



notte blue



ice



crema



green



purjai red



white



black



bronze



steel



anthracite



red



khaki



taupe



ecru



beige

Matt Polyethylene

SELF-WATERING

Ref. 45005R

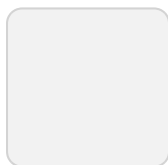
VONDOM



orange



notte blue



ice



crema



green



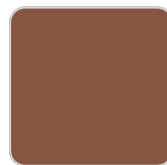
purjai red



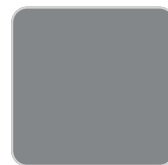
white



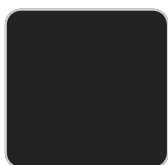
black



bronze



steel



anthracite



red



khaki



taupe



ecru



beige

Self-watering system included in all planters except those with basic finish

LACQUERED

Ref. 45005F



purjai red



white



black



bronze



steel



anthracite



red



khaki



taupe



ecru

VONDOM



beige



modo green



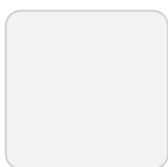
champany

Lacquered Polyethylene

lighting

WHITE LED

Ref. 45005W



ice

White internally lit unit with LED technology. Available only in matte ice white finish.

RGBW LED

Ref. 45005L



ice

Unit with internal lighting with RGBW LED technology and remote control unit for switching colors. Available only in matte ice white finish. Remote control included.

RGBW LED DMX

Ref. 45005D



ice

Unit with internal lighting with RGBW LED technology and remote control unit for switching colors. Also controlled by DMX-1024 (wireless), enabling communication between one or more products simultaneously via the DMX transmitter (not included). There are two options to choose from: Professional XLR DMX and Home WIFI DMX. (Remote control included). Optional battery

RGBW LED BATTERY

Ref. 45005Y

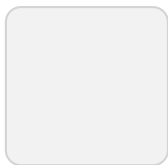


ice

Unit with internal lighting with battery-powered RGBW LED technology. Includes charger and remote control for switching colors and charger. Available only in matte ice white finish.

RGBW LED DMX BATTERY

Ref. 45005DY



ice

Unit with internal lighting with RGBW LED technology and remote control unit for switching colors. Also controlled by DMX-1024 (wireless), enabling communication between one or more products simultaneously via the DMX transmitter (not included). There are two options to choose from: Professional XLR

VONDOM

DMX and Home WIFI DMX. (Remote control included).

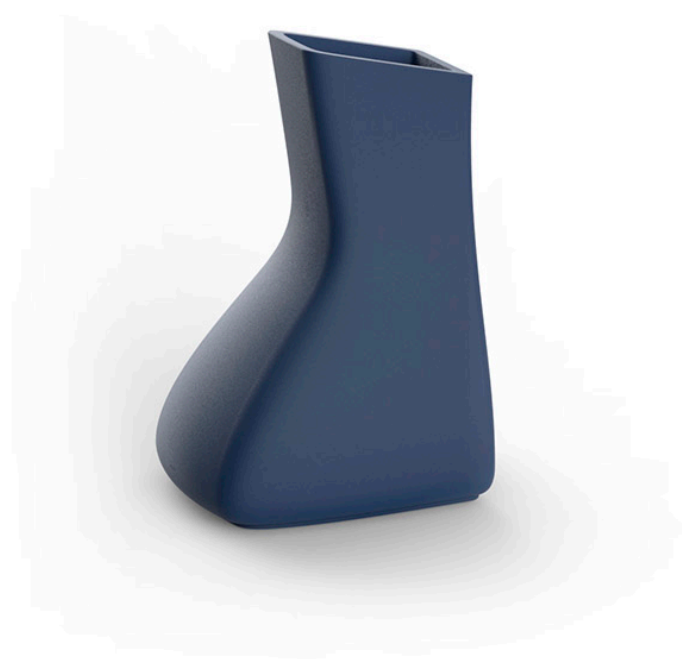
Ambients



Noma mellizas low

by Javier Mariscal

The Noma Collection, designed by **Javier Mariscal** for the Spanish brand **Vondom**, is a group of outdoor items. There was an aim to create a new typology of furniture by combining the functions of a flowerpot and an outdoor table, and thus NOMA was born, a collection **characterized by its originality and versatile nature.**

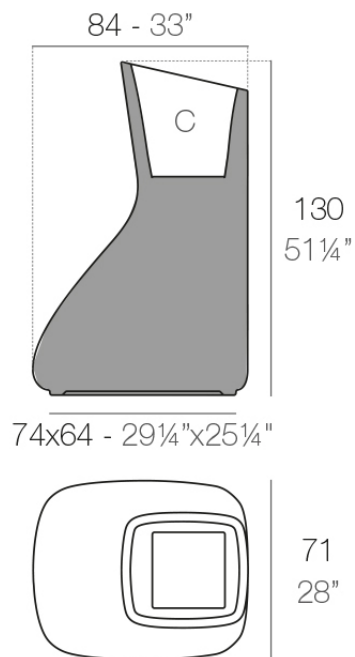


Info

Description

Pot made of polyethylene resin by rotational moulding. 100% Recyclable. Item suitable for indoor and outdoor use. Available in different finishes.

Weight: 20 Kg



MELLIZA Macetero Low
TWIN Low Planter

C = 63 L
C = 16³/₄ gal

Finishes

finishes

BASIC

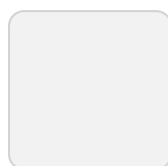
Ref. 45003A



orange



notte blue



ice



crema



green



purjai red



white



black



bronze



steel



anthracite



red



khaki



taupe



ecru



beige

Matt Polyethylene

SELF-WATERING

Ref. 45003R

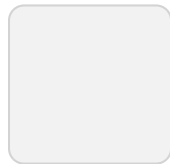
VONDOM



orange



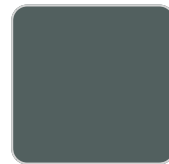
notte blue



ice



crema



green



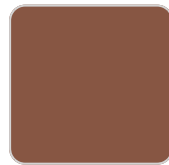
purjai red



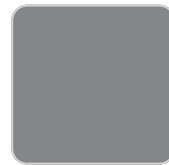
white



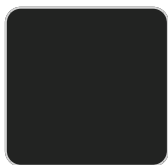
black



bronze



steel



anthracite



red



khaki



taupe



ecru



beige

Self-watering system included in all planters except those with basic finish

LACQUERED

Ref. 45003F



purjai red



white



black



bronze



steel



anthracite



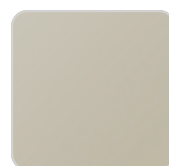
red



khaki



taupe



ecru



beige



modo green



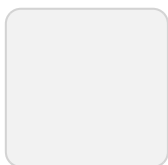
champany

Lacquered Polyethylene

lighting

WHITE LED

Ref. 45003W



ice

White internally lit unit with LED technology. Available only in matte ice white finish.

RGBW LED

Ref. 45003L



ice

Unit with internal lighting with RGBW LED technology and remote control unit for switching colors. Available only in matte ice white finish. Remote control included.

RGBW LED DMX

Ref. 45003D



ice

Unit with internal lighting with RGBW LED technology and remote control unit for switching colors. Also controlled by DMX-1024 (wireless), enabling communication between one or more products simultaneously via the DMX transmitter (not included). There are two options to choose from: Professional XLR DMX and Home WIFI DMX. (Remote control included). Optional battery

RGBW LED BATTERY

Ref. 45003Y

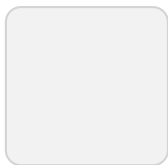


ice

Unit with internal lighting with battery-powered RGBW LED technology. Includes charger and remote control for switching colors and charger. Available only in matte ice white finish.

RGBW LED DMX BATTERY

Ref. 45003DY



ice

Unit with internal lighting with RGBW LED technology and remote control unit for switching colors. Also controlled by DMX-1024 (wireless), enabling communication between one or more products simultaneously via the DMX transmitter (not included). There are two options to choose from: Professional XLR

VONDOM

DMX and Home WIFI DMX. (Remote control included).

Ambients



Noma mellizas high

by Javier Mariscal

The Noma Collection, designed by **Javier Mariscal** for the Spanish brand **Vondom**, is a group of outdoor items. There was an aim to create a new typology of furniture by combining the functions of a flowerpot and an outdoor table, and thus NOMA was born, a collection **characterized by its originality and versatile nature.**

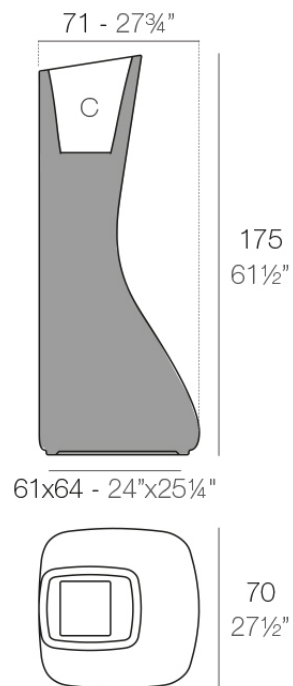


Info

Description

Pot made of polyethylene resin by rotational moulding. 100% Recyclable. Item suitable for indoor and outdoor use. Available in different finishes.

Weight: 20 Kg



MELLIZA Macetero High C = 42 L
TWIN High Planter C = 11 gal

Finishes

finishes

BASIC

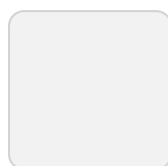
Ref. 45002A



orange



notte blue



ice



crema



green



purjai red



white



black



bronze



steel



anthracite



red



khaki



taupe



ecru



beige

Matt Polyethylene

SELF-WATERING

Ref. 45002R

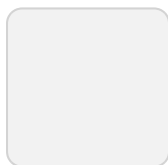
VONDOM



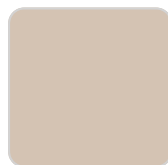
orange



notte blue



ice



crema



green



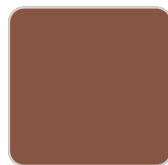
purjai red



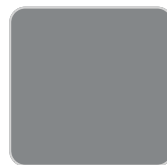
white



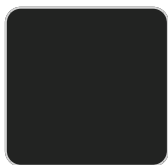
black



bronze



steel



anthracite



red



khaki



taupe



ecru



beige

Self-watering system included in all planters except those with basic finish

LACQUERED

Ref. 45002F



purjai red



white



black



bronze



steel



anthracite



red



khaki



taupe



ecru



beige



modo green



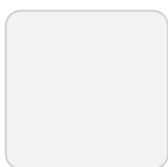
champany

Lacquered Polyethylene

lighting

WHITE LED

Ref. 45002W



ice

White internally lit unit with LED technology. Available only in matte ice white finish.

RGBW LED

Ref. 45002L



ice

Unit with internal lighting with RGBW LED technology and remote control unit for switching colors. Available only in matte ice white finish. Remote control included.

RGBW LED DMX

Ref. 45002D



ice

Unit with internal lighting with RGBW LED technology and remote control unit for switching colors. Also controlled by DMX-1024 (wireless), enabling communication between one or more products simultaneously via the DMX transmitter (not included). There are two options to choose from: Professional XLR DMX and Home WIFI DMX. (Remote control included). Optional battery

RGBW LED BATTERY

Ref. 45002Y

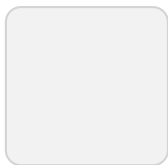


ice

Unit with internal lighting with battery-powered RGBW LED technology. Includes charger and remote control for switching colors and charger. Available only in matte ice white finish.

RGBW LED DMX BATTERY

Ref. 45002DY



ice

Unit with internal lighting with RGBW LED technology and remote control unit for switching colors. Also controlled by DMX-1024 (wireless), enabling communication between one or more products simultaneously via the DMX transmitter (not included). There are two options to choose from: Professional XLR

VONDOM

DMX and Home WIFI DMX. (Remote control included).

Ambients

