

Marquis hanging planter ø50x26

by JM Ferrero

Marquis, designed by Estudi{H}ac for Vondom, is a planters collection **originating from the inspiration of diamond cutting**. Its polygonal design recalls facets created through cutting. It also **includes a design table lamp**.

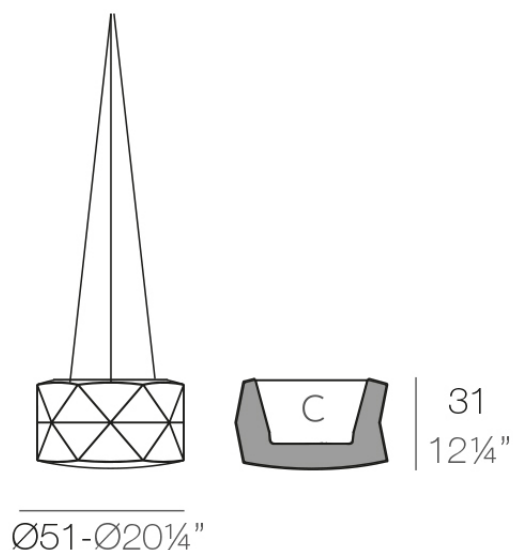


Info

Description

Made of polyethylene resin by rotational moulding. 100% Recyclable. Item suitable for indoor and outdoor use. Available in different finishes.

Weight: 4.5 Kg



MARQUIS Maceta Ø51x31

C = 3 L x 22 cm

MARQUIS Planter Ø20 1/4"x12 1/4"

C = 3/4 gal 5.9 L

Finishes

finishes

BASIC

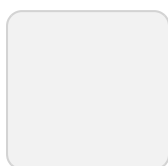
Ref. 47086A



orange



notte blue



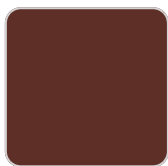
ice



crema



green



purjai red



white



black



bronze



steel



anthracite



red



khaki



taupe



ecru



beige

Matt Polyethylene

SELF-WATERING

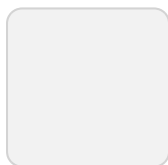
Ref. 47086R



orange



notte blue



ice



crema



green



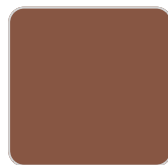
purjai red



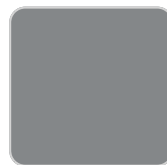
white



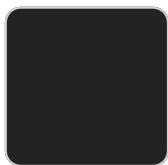
black



bronze



steel



anthracite



red



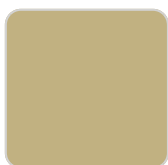
khaki



taupe



ecru



beige

Self-watering system included in all planters except those with basic finish

LACQUERED

Ref. 47086F



purjai red



white



black



bronze



steel



anthracite



red



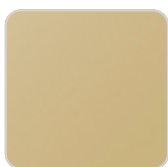
khaki



taupe



ecru



beige



modo green



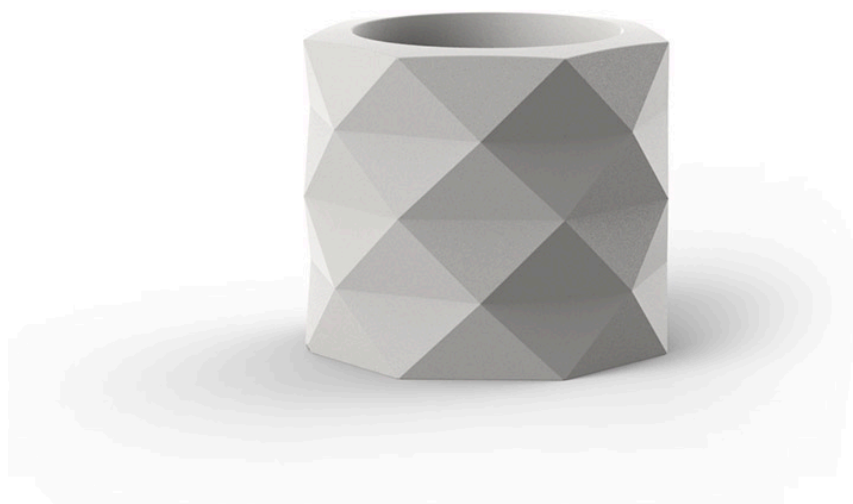
champany

Lacquered Polyethylene

Marquis planter ø60x50

by JM Ferrero

Marquis, designed by Estudi{H}ac for Vondom, is a planters collection **originating from the inspiration of diamond cutting**. Its polygonal design recalls facets created through cutting. It also **includes a design table lamp**.

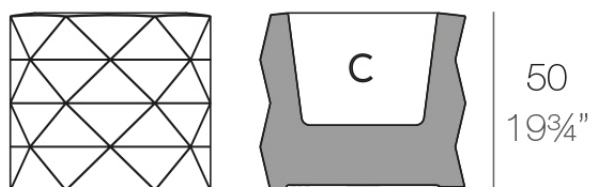


Info

Description

Made of polyethylene resin by rotational moulding. 100% Recyclable. Item suitable for indoor and outdoor use. Available in different finishes.

Weight: 8.5 Kg



Ø60-Ø23½"

MARQUIS Maceta Ø60x50

C = 60 L 32 cm

MARQUIS Planter Ø23½"x19¾"

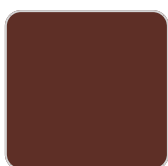
C = 15¾ gal 4"

Finishes

finishes

BASIC

Ref. 47081A



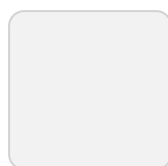
purjai red



orange



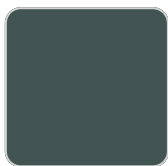
notte blue



ice



crema



green



white



black



bronze



steel



anthracite



red



khaki



taupe



ecru

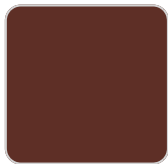


beige

Matt Polyethylene

SELF-WATERING

Ref. 47081R



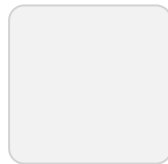
purjai red



orange



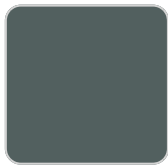
notte blue



ice



crema



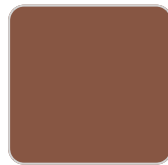
green



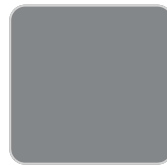
white



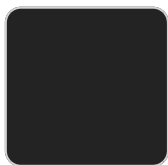
black



bronze



steel



anthracite



red



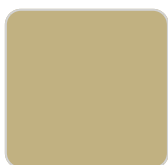
khaki



taupe



ecru



beige

Self-watering system included in all planters except those with basic finish

LACQUERED

Ref. 47081F



purjai red



white



black



bronze



steel



anthracite



red



khaki



taupe



ecru



beige



modo green



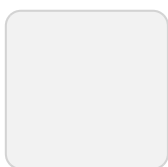
champany

Lacquered Polyethylene

lighting

WHITE LED

Ref. 47081W

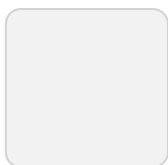


ice

White internally lit unit with LED technology. Available only in matte ice white finish.

RGBW LED

Ref. 47081L



ice

Unit with internal lighting with RGBW LED technology and remote control unit for switching colors. Available only in matte ice white finish. Remote control included.

RGBW LED DMX

Ref. 47081D



ice

Unit with internal lighting with RGBW LED technology and remote control unit for switching colors. Also controlled by DMX-1024 (wireless), enabling communication between one or more products simultaneously via the DMX transmitter (not included). There are two options to choose from: Professional XLR DMX and Home WIFI DMX. (Remote control included). Optional battery

RGBW LED BATTERY

Ref. 47081Y



ice

Unit with internal lighting with battery-powered RGBW LED technology. Includes charger and remote control for switching colors and charger. Available only in matte ice white finish.

RGBW LED DMX BATTERY

Ref. 47081DY



ice

Unit with internal lighting with RGBW LED technology and remote control unit for switching colors. Also controlled by DMX-1024 (wireless), enabling communication between one or more products simultaneously via the DMX transmitter (not included). There are two options to choose from: Professional XLR

DMX and Home WIFI DMX. (Remote control included).

Ambients



Marquis planter ø25x53

by JM Ferrero

Marquis, designed by Estudi{H}ac for Vondom, is a planters collection **originating from the inspiration of diamond cutting**. Its polygonal design recalls facets created through cutting. It also **includes a design table lamp**.

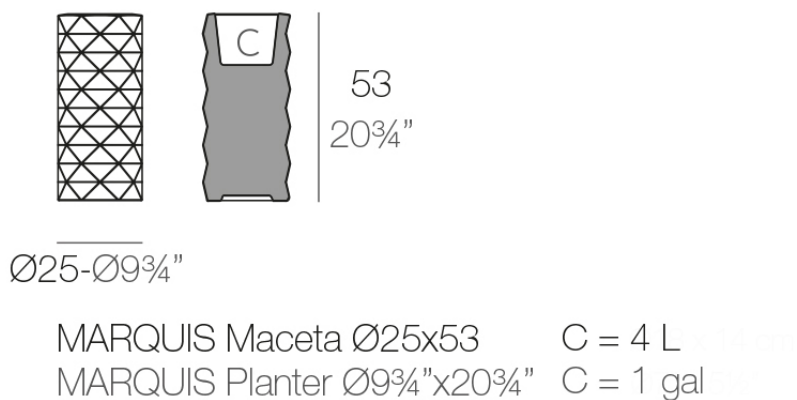


Info

Description

Made of polyethylene resin by rotational moulding. 100% Recyclable. Item suitable for indoor and outdoor use. Available in different finishes.

Weight: 2.5 Kg



Finishes

finishes

BASIC

Ref. 47082A



crema



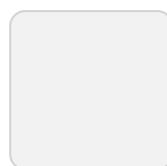
green



purjai red



orange



ice



notte blue



white



black



bronze



steel



anthracite



red



khaki



taupe



ecru

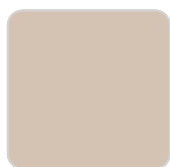


beige

Matt Polyethylene

SELF-WATERING

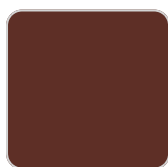
Ref. 47082R



crema



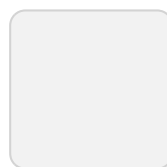
green



purjai red



orange



ice



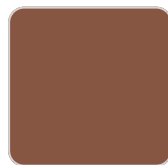
notte blue



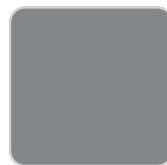
white



black



bronze



steel



anthracite



red



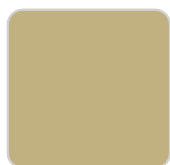
khaki



taupe



ecru



beige

Self-watering system included in all planters except those with basic finish

LACQUERED

Ref. 47082F



purjai red



white



black



bronze



steel



anthracite



red



khaki



taupe



ecru



beige



modo green



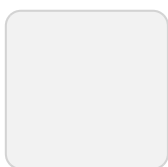
champany

Lacquered Polyethylene

lighting

WHITE LED

Ref. 47082W

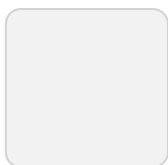


ice

White internally lit unit with LED technology. Available only in matte ice white finish.

RGBW LED

Ref. 47082L



ice

Unit with internal lighting with RGBW LED technology and remote control unit for switching colors. Available only in matte ice white finish. Remote control included.

RGBW LED DMX

Ref. 47082D



ice

Unit with internal lighting with RGBW LED technology and remote control unit for switching colors. Also controlled by DMX-1024 (wireless), enabling communication between one or more products simultaneously via the DMX transmitter (not included). There are two options to choose from: Professional XLR DMX and Home WIFI DMX. (Remote control included). Optional battery

RGBW LED BATTERY

Ref. 47082Y



ice

Unit with internal lighting with battery-powered RGBW LED technology. Includes charger and remote control for switching colors and charger. Available only in matte ice white finish.

RGBW LED DMX BATTERY

Ref. 47082DY



ice

Unit with internal lighting with RGBW LED technology and remote control unit for switching colors. Also controlled by DMX-1024 (wireless), enabling communication between one or more products simultaneously via the DMX transmitter (not included). There are two options to choose from: Professional XLR

DMX and Home WIFI DMX. (Remote control included).

Ambients



Marquis planter ø40x60

by JM Ferrero

Marquis, designed by Estudi{H}ac for Vondom, is a planters collection **originating from the inspiration of diamond cutting**. Its polygonal design recalls facets created through cutting. It also **includes a design table lamp**.

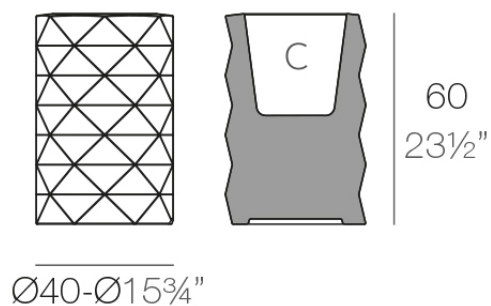


Info

Description

Made of polyethylene resin by rotational moulding. 100% Recyclable. Item suitable for indoor and outdoor use. Available in different finishes.

Weight: 5.5 Kg



Ø40-Ø15¾"

MARQUIS Maceta Ø40x60

C = 23 L 23 cm

MARQUIS Planter Ø15¾"x23½"

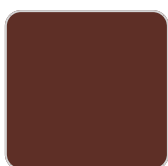
C = 6 gal 11"

Finishes

finishes

BASIC

Ref. 47083A



purjai red



white



black



bronze



steel



anthracite



red



khaki



taupe



ecru



beige



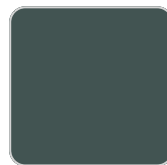
orange



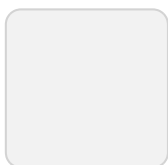
notte blue



crema



green

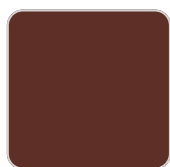


ice

Matt Polyethylene

SELF-WATERING

Ref. 47083R



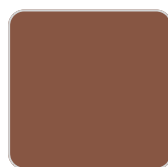
purjai red



white



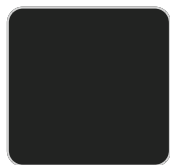
black



bronze



steel



anthracite



red



khaki



taupe



ecru



beige



orange



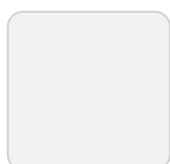
notte blue



crema



green



ice

Self-watering system included in all planters except those with basic finish

LACQUERED

Ref. 47083F



modo green



purjai red



white



black



bronze



steel



anthracite



champany



red



khaki



taupe



ecru



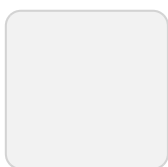
beige

Lacquered Polyethylene

lighting

WHITE LED

Ref. 47083W

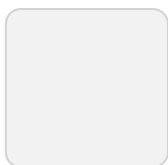


ice

White internally lit unit with LED technology. Available only in matte ice white finish.

RGBW LED

Ref. 47083L



ice

Unit with internal lighting with RGBW LED technology and remote control unit for switching colors. Available only in matte ice white finish. Remote control included.

RGBW LED DMX

Ref. 47083D



ice

Unit with internal lighting with RGBW LED technology and remote control unit for switching colors. Also controlled by DMX-1024 (wireless), enabling communication between one or more products simultaneously via the DMX transmitter (not included). There are two options to choose from: Professional XLR DMX and Home WIFI DMX. (Remote control included). Optional battery

RGBW LED BATTERY

Ref. 47083Y



ice

Unit with internal lighting with battery-powered RGBW LED technology. Includes charger and remote control for switching colors and charger. Available only in matte ice white finish.

RGBW LED DMX BATTERY

Ref. 47083DY



ice

Unit with internal lighting with RGBW LED technology and remote control unit for switching colors. Also controlled by DMX-1024 (wireless), enabling communication between one or more products simultaneously via the DMX transmitter (not included). There are two options to choose from: Professional XLR

DMX and Home WIFI DMX. (Remote control included).

Ambients



Marquis planter ø30x83

by JM Ferrero

Marquis, designed by Estudi{H}ac for Vondom, is a planters collection **originating from the inspiration of diamond cutting**. Its polygonal design recalls facets created through cutting. It also **includes a design table lamp**.

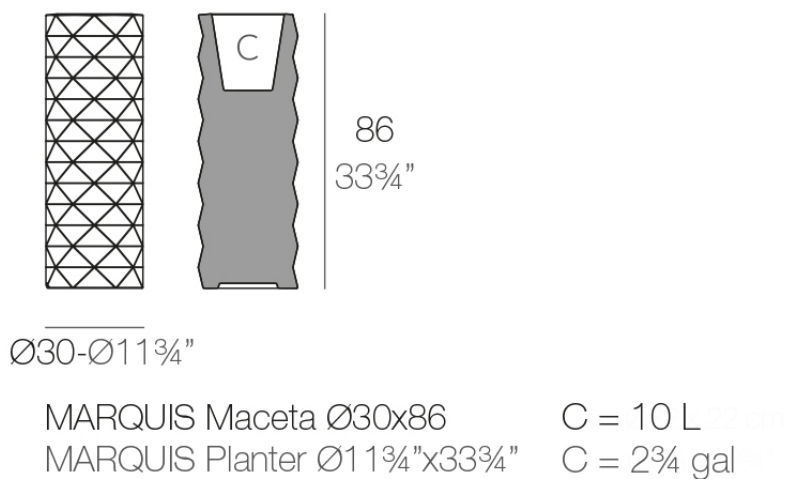


Info

Description

Made of polyethylene resin by rotational moulding. 100% Recyclable. Item suitable for indoor and outdoor use. Available in different finishes.

Weight: 5 Kg

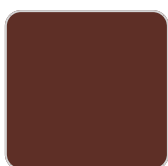


Finishes

finishes

BASIC

Ref. 47084A



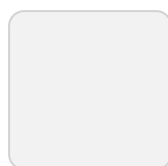
purjai red



orange



notte blue



ice



crema



green



white



black



bronze



steel



anthracite



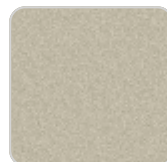
red



khaki



taupe



ecru

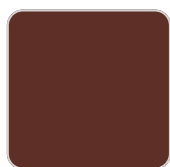


beige

Matt Polyethylene

SELF-WATERING

Ref. 47084R



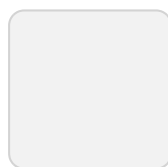
purjai red



orange



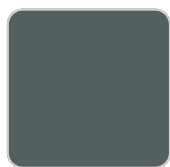
notte blue



ice



crema



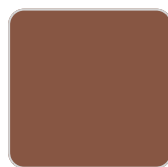
green



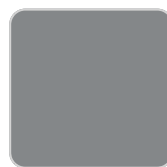
white



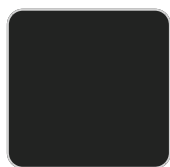
black



bronze



steel



anthracite



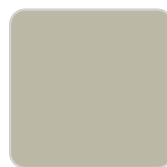
red



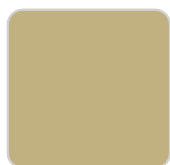
khaki



taupe



ecru



beige

Self-watering system included in all planters except those with basic finish

LACQUERED

Ref. 47084F



purjai red



white



black



bronze



steel



anthracite



red



khaki



taupe



ecru



beige



modo green



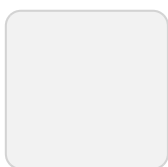
champany

Lacquered Polyethylene

lighting

WHITE LED

Ref. 47084W

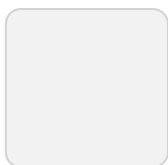


ice

White internally lit unit with LED technology. Available only in matte ice white finish.

RGBW LED

Ref. 47084L



ice

Unit with internal lighting with RGBW LED technology and remote control unit for switching colors. Available only in matte ice white finish. Remote control included.

RGBW LED DMX

Ref. 47084D



ice

Unit with internal lighting with RGBW LED technology and remote control unit for switching colors. Also controlled by DMX-1024 (wireless), enabling communication between one or more products simultaneously via the DMX transmitter (not included). There are two options to choose from: Professional XLR DMX and Home WIFI DMX. (Remote control included). Optional battery

RGBW LED BATTERY

Ref. 47084Y



ice

Unit with internal lighting with battery-powered RGBW LED technology. Includes charger and remote control for switching colors and charger. Available only in matte ice white finish.

RGBW LED DMX BATTERY

Ref. 47084DY



ice

Unit with internal lighting with RGBW LED technology and remote control unit for switching colors. Also controlled by DMX-1024 (wireless), enabling communication between one or more products simultaneously via the DMX transmitter (not included). There are two options to choose from: Professional XLR

DMX and Home WIFI DMX. (Remote control included).

Ambients



Marquis planter ø80x100

by JM Ferrero

Marquis, designed by Estudi{H}ac for Vondom, is a planters collection **originating from the inspiration of diamond cutting**. Its polygonal design recalls facets created through cutting. It also **includes a design table lamp**.

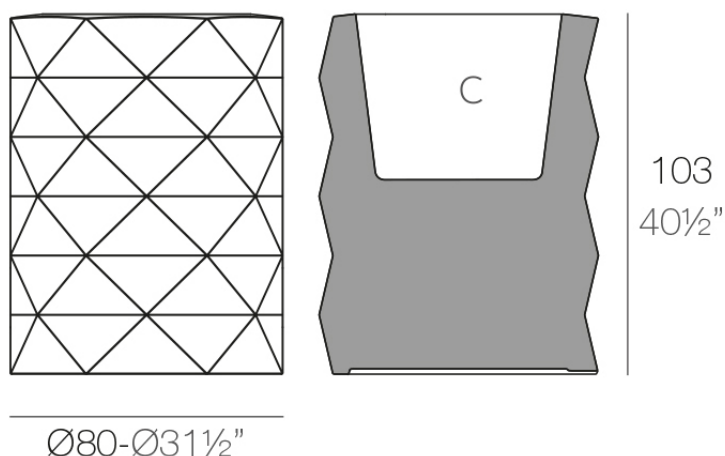


Info

Description

Made of polyethylene resin by rotational moulding. 100% Recyclable. Item suitable for indoor and outdoor use. Available in different finishes.

Weight: 19.5 Kg



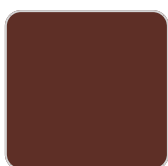
MARQUIS Maceta Ø80x103 C = 160 L 42 cm
MARQUIS Planter Ø31 1/2"x40 1/2" C = 42 1/4 gal 16 L

Finishes

finishes

BASIC

Ref. 47085A



purjai red



white



black



bronze



steel



anthracite



red



khaki



taupe



ecru



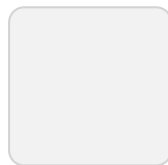
beige



orange



notte blue



ice



crema



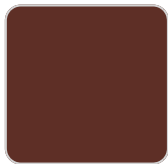
green

Matt Polyethylene

SELF-WATERING

Ref. 47085R

VONDOM



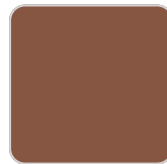
purjai red



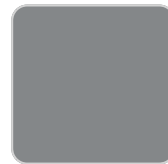
white



black



bronze



steel



anthracite



red



khaki



taupe



ecru



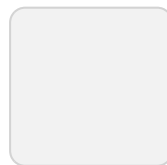
beige



orange



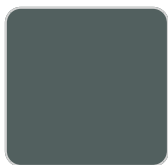
notte blue



ice



crema



green

Self-watering system included in all planters except those with basic finish

LACQUERED

Ref. 47085F



modo green



purjai red



white



black



bronze



steel



anthracite



champany



red



khaki



taupe



ecru



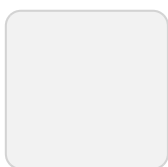
beige

Lacquered Polyethylene

lighting

WHITE LED

Ref. 47085W

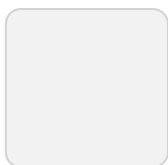


ice

White internally lit unit with LED technology. Available only in matte ice white finish.

RGBW LED

Ref. 47085L



ice

Unit with internal lighting with RGBW LED technology and remote control unit for switching colors. Available only in matte ice white finish. Remote control included.

RGBW LED DMX

Ref. 47085D



ice

Unit with internal lighting with RGBW LED technology and remote control unit for switching colors. Also controlled by DMX-1024 (wireless), enabling communication between one or more products simultaneously via the DMX transmitter (not included). There are two options to choose from: Professional XLR DMX and Home WIFI DMX. (Remote control included). Optional battery

RGBW LED BATTERY

Ref. 47085Y



ice

Unit with internal lighting with battery-powered RGBW LED technology. Includes charger and remote control for switching colors and charger. Available only in matte ice white finish.

RGBW LED DMX BATTERY

Ref. 47085DY



ice

Unit with internal lighting with RGBW LED technology and remote control unit for switching colors. Also controlled by DMX-1024 (wireless), enabling communication between one or more products simultaneously via the DMX transmitter (not included). There are two options to choose from: Professional XLR

DMX and Home WIFI DMX. (Remote control included).

Ambients

