

## Mari-sol table base h:50cm

by Eugeni Quitllet

Mari-sol Collection, designed by Eugeni Quitllet for Vondom, is composed by a design table that **combines technology in its function with sensuality** in its shape. The answer for adorning terraces around the world.



## Info

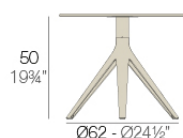
---

### Description

Extruded aluminum tube with cast aluminum base coated with epoxy baked painting. Item suitable for indoor and outdoor use. Table top not included.

Weight: 3.53 Kg

#### BASE 3 LEGS - BASE 3 PATAS



fixed top / fijo ref. 65009

collapsible top / abatible ref. 65009T

fixed for glass / fijo para vidrio ref. 65009V

MARI-SOL BASE MESA Ø62 H50

MARI-SOL TABLE BASE Ø24 1/2" H19 3/4"

#### TABLE TOPS OPTIONS - OPCIONES SOBRES



Ø50 cm

Ø19 1/4"



Ø59 cm

Ø23 1/4"



Ø69 cm

Ø27 1/4"



50 x 50 cm

19 1/4" x 19 1/4"



59 x 59 cm

23 1/4" x 23 1/4"

## Finishes

---

### finishes

---

Fixed

Ref. 65009



white



british gray



traffic gray



black



ecru



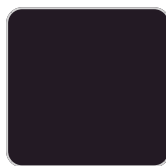
crema



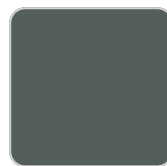
castoro fiber



bronze



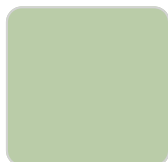
notte blue



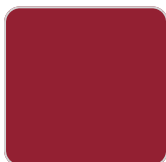
modo green



pickle



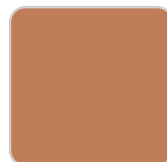
almond



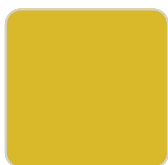
red



purjai red



melon



mostaza

Powder coated aluminum base with non collapsable attachment made of polyamide and fiber glass

COLLAPSIBLE TOP

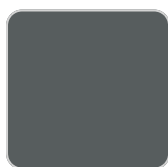
Ref. 65009T



white



british gray



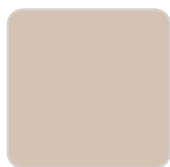
traffic gray



black



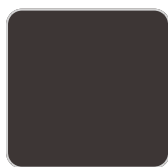
ecru



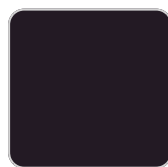
crema



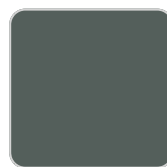
castoro fiber



bronze



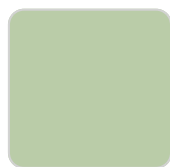
notte blue



modo green



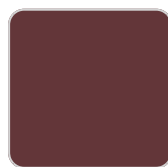
pickle



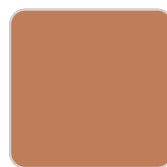
almond



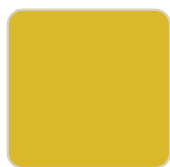
red



purjai red



melon



mostaza

Powder coated aluminum base with 90° collapsable attachment made of polyamide and fiber glass

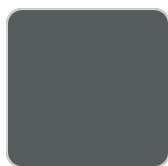
Fixed glass  
Ref. 65009V



white



british gray



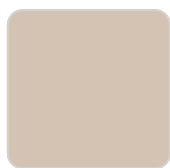
traffic gray



black



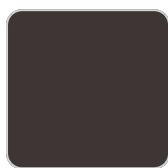
ecru



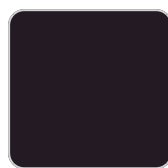
crema



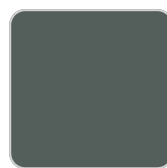
castoro fiber



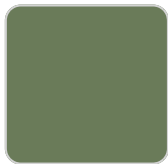
bronze



notte blue



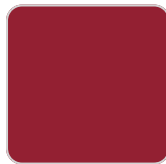
modo green



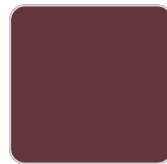
pickle



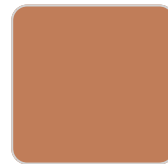
almond



red



purjai red



melon



mostaza

Powder coated aluminum base with non collapsable aluminum attachment powder coated, made exclusively for our glass tops.

## Ambients

---



## Mari-sol table base ø80 h:50cm

by Eugeni Quitllet

Mari-sol Collection, designed by Eugeni Quitllet for Vondom, is composed by a design table that **combines technology in its function with sensuality** in its shape. The answer for adorning terraces around the world.



## Info

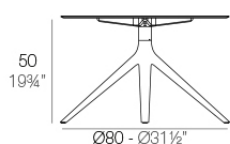
---

### Description

Extruded aluminum tube with cast aluminum base coated with epoxy baked painting. Item suitable for indoor and outdoor use. Table top not included.

Weight: 4.67 Kg

BASE 4 LEGS - BASE 4 PATAS



fixed top / fijo ref: 65015

fixed for glass / fijo para vidrio ref: 65015V

MARI-SOL BASE MESA Ø80 H50

MARI-SOL TABLE BASE Ø31 1/2" H19 3/4"

TABLE TOPS OPTIONS - OPCIONES SOBRES



Ø79 cm  
Ø31"



69 x 69 cm  
27 1/4" x 27 1/4"



Ø89 cm  
Ø25"



79 x 79 cm  
31" x 31"



Ø100 cm  
Ø39 1/4"



89 x 89 cm  
25" x 25"



## Finishes

---

### finishes

---

Fixed

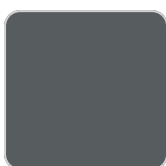
Ref. 65015



white



british gray



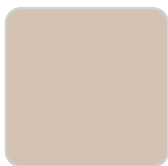
traffic gray



black



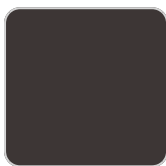
ecru



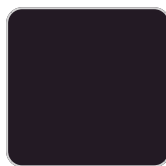
crema



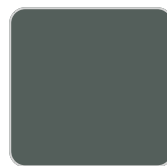
castoro fiber



bronze



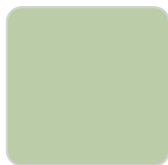
notte blue



modo green



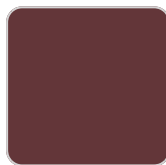
pickle



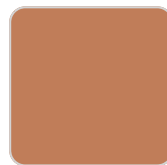
almond



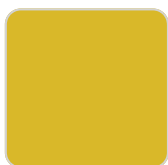
red



purjai red



melon



mostaza

Powder coated aluminum base with non collapsable attachment made of polyamide and fiber glass

Fixed glass

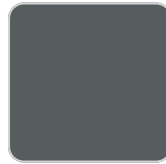
Ref. 65015V



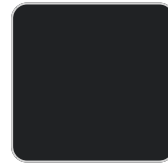
white



british gray



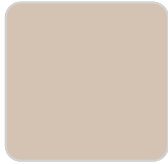
traffic gray



black



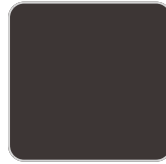
ecru



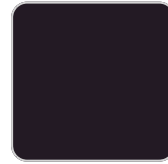
crema



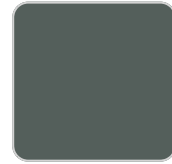
castoro fiber



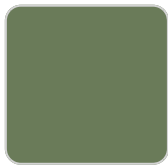
bronze



notte blue



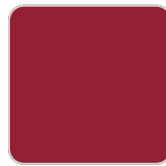
modo green



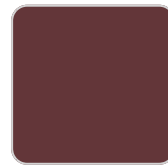
pickle



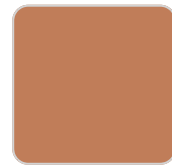
almond



red



purjai red



melon



mostaza

Powder coated aluminum base with non collapsable aluminum attachment powder coated, made exclusively for our glass tops.

## Ambients

---





## Mari-sol table base ø96,5 h:50cm

by Eugeni Quitllet

Mari-sol Collection, designed by Eugeni Quitllet for Vondom, is composed by a design table that **combines technology in its function with sensuality** in its shape. The answer for adorning terraces around the world.



## Info

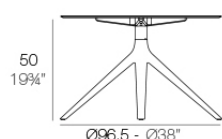
---

### Description

Extruded aluminum tube with cast aluminum base coated with epoxy baked painting. Item suitable for indoor and outdoor use. Table top not included.

Weight: 4.01 Kg

BASE 4 LEGS - BASE 4 PATAS



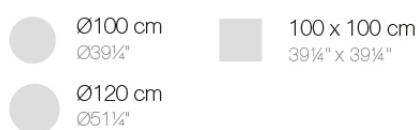
fixed top / fijo ref. 65033

fixed for glass / fijo para vidrio ref. 65033V

MARI-SOL BASE MESA Ø96"5 H50

MARI-SOL TABLE BASE Ø38" H19 3/4"

TABLE TOPS OPTIONS - OPCIONES SOBRES



## Finishes

---

### finishes

---

Fixed

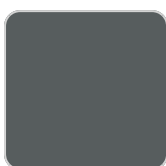
Ref. 65033



white



british gray



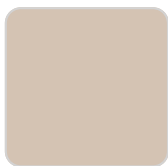
traffic gray



black



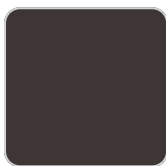
ecru



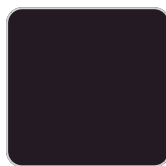
crema



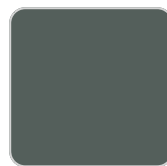
castoro fiber



bronze



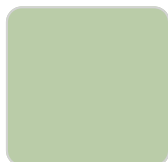
notte blue



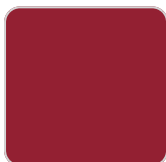
modo green



pickle



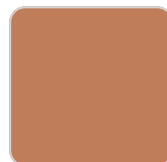
almond



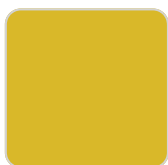
red



purjai red



melon



mostaza

Powder coated aluminum base with non collapsable attachment made of polyamide and fiber glass

Fixed glass

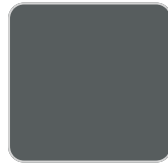
Ref. 65033V



white



british gray



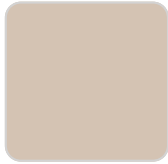
traffic gray



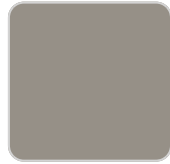
black



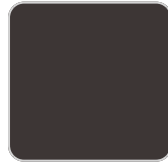
ecru



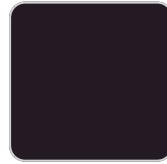
crema



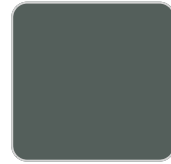
castoro fiber



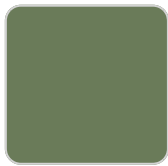
bronze



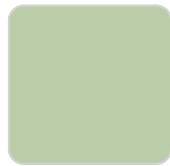
notte blue



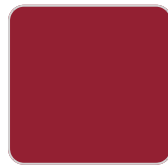
modo green



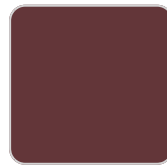
pickle



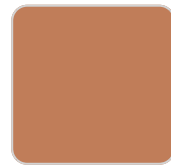
almond



red



purjai red



melon



mostaza

Powder coated aluminum base with non collapsable aluminum attachment powder coated, made exclusively for our glass tops.



