

Mari-sol table base h:73cm

by Eugeni Quitllet

Mari-sol Collection, designed by Eugeni Quitllet for Vondom, is composed by a design table that **combines technology in its function with sensuality** in its shape. The answer for adorning terraces around the world.



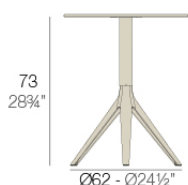
Info

Description

Extruded aluminum tube with cast aluminum base coated with epoxy baked painting. Item suitable for indoor and outdoor use. Table top not included.

Weight: 3.59 Kg

BASE 3 LEGS - BASE 3 PATAS



fixed top / fijo ref: 65010

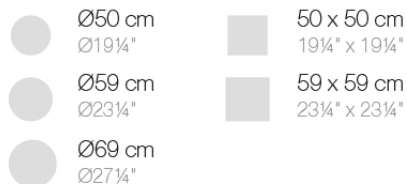
collapsible top / abatible ref: 65010T

fixed for glass / fijo para vidrio ref: 65010V

MARI-SOL BASE MESA Ø62 H73

MARI-SOL TABLE BASE Ø24 1/2" H28 3/4"

TABLE TOPS OPTIONS - OPCIONES SOBRES



Finishes

finishes

Fixed

Ref. 65010



white



british gray



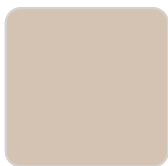
traffic gray



black



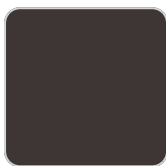
ecru



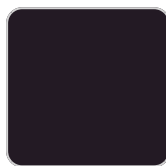
crema



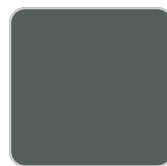
castoro fiber



bronze



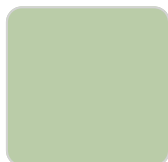
notte blue



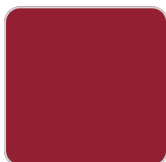
modo green



pickle



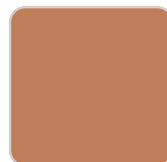
almond



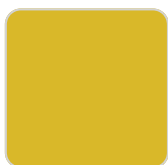
red



purjai red



melon



mostaza

Powder coated aluminum base with non collapsable attachment made of polyamide and fiber glass

COLLAPSIBLE TOP

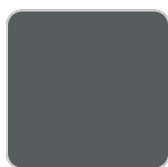
Ref. 65010T



white



british gray



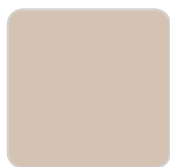
traffic gray



black



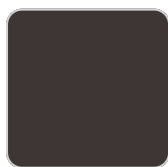
ecru



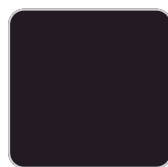
crema



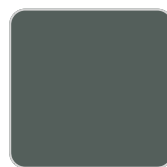
castoro fiber



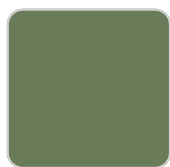
bronze



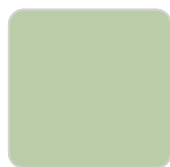
notte blue



modo green



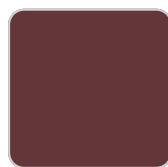
pickle



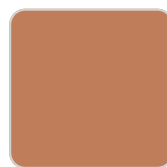
almond



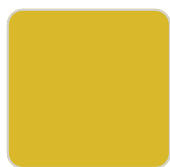
red



purjai red



melon



mostaza

Powder coated aluminum base with 90° collapsable attachment made of polyamide and fiber glass

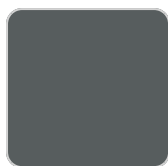
Fixed glass
Ref. 65010V



white



british gray



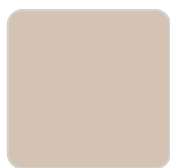
traffic gray



black



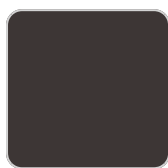
ecru



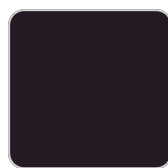
crema



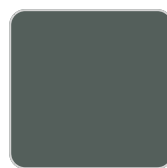
castoro fiber



bronze



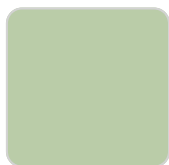
notte blue



modo green



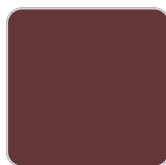
pickle



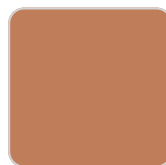
almond



red



purjai red



melon



mostaza

Powder coated aluminum base with non collapsable aluminum attachment powder coated, made exclusively for our glass tops.

Ambients



Mari-sol table base ø80 h:73cm

by Eugeni Quitllet

Mari-sol Collection, designed by Eugeni Quitllet for Vondom, is composed by a design table that **combines technology in its function with sensuality** in its shape. The answer for adorning terraces around the world.



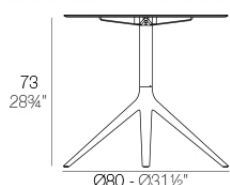
Info

Description

Extruded aluminum tube with cast aluminum base coated with epoxy baked painting. Item suitable for indoor and outdoor use. Table top not included.

Weight: 5.18 Kg

BASE 4 LEGS - BASE 4 PATAS



fixed top / fijo ref: 65016

fixed for glass / fijo para vidrio ref: 65016V

MARI-SOL BASE MESA Ø80 H73

MARI-SOL TABLE BASE Ø31 1/2" H28 3/4"

TABLE TOPS OPTIONS - OPCIONES SOBRES

Ø79 cm Ø31"	69 x 69 cm 27 1/4" x 27 1/4"
Ø89 cm Ø25"	79 x 79 cm 31" x 31"
Ø100 cm Ø39 1/4"	89 x 89 cm 25" x 25"

Finishes

finishes

Fixed

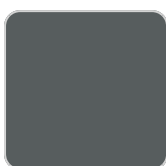
Ref. 65016



white



british gray



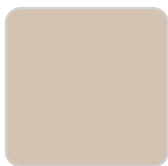
traffic gray



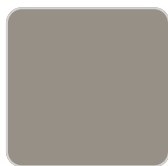
black



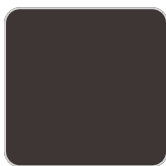
ecru



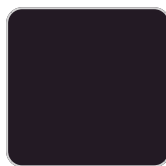
crema



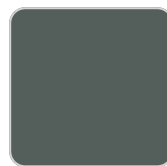
castoro fiber



bronze



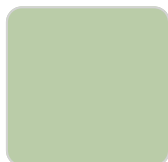
notte blue



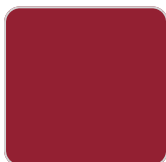
modo green



pickle



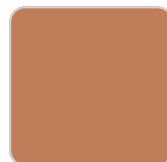
almond



red



purjai red



melon



mostaza

Powder coated aluminum base with non collapsable attachment made of polyamide and fiber glass

Fixed glass

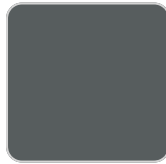
Ref. 65016V



white



british gray



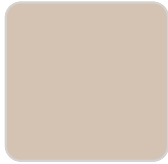
traffic gray



black



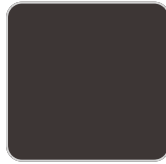
ecru



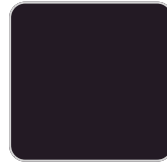
crema



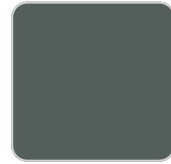
castoro fiber



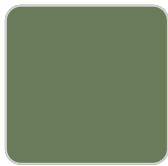
bronze



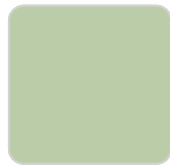
notte blue



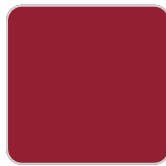
modo green



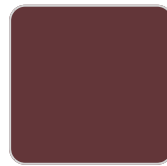
pickle



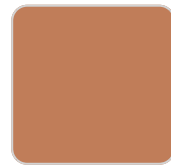
almond



red



purjai red



melon



mostaza

Powder coated aluminum base with non collapsable aluminum attachment powder coated, made exclusively for our glass tops.

Ambients



Mari-sol table base ø96,5 h:73cm

by Eugeni Quitllet

Mari-sol Collection, designed by Eugeni Quitllet for Vondom, is composed by a design table that **combines technology in its function with sensuality** in its shape. The answer for adorning terraces around the world.



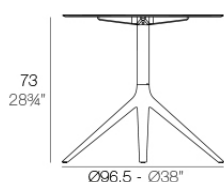
Info

Description

Extruded aluminum tube with cast aluminum base coated with epoxy baked painting. Item suitable for indoor and outdoor use. Table top not included.

Weight: 5.26 Kg

BASE 4 LEGS - BASE 4 PATAS



fixed top / fijo *ref.* 65035

fixed for glass / fijo para vidrio *ref.* 65035V

MARI-SOL BASE MESA Ø96'5 H73
MARI-SOL TABLE BASE Ø38" H28¾"

TABLE TOPS OPTIONS - OPCIONES SOBRES



Ø100 cm
Ø39¼"



100 x 100 cm
39¼" x 39¼"



Ø120 cm
Ø51¼"

Finishes

finishes

Fixed

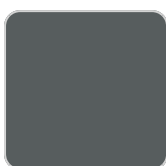
Ref. 65035



white



british gray



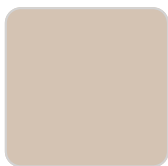
traffic gray



black



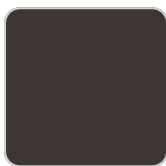
ecru



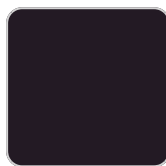
crema



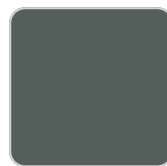
castoro fiber



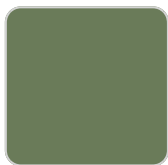
bronze



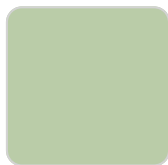
notte blue



modo green



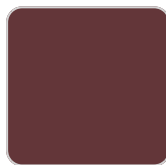
pickle



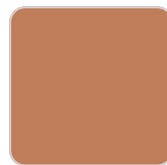
almond



red



purjai red



melon



mostaza

Powder coated aluminum base with non collapsable attachment made of polyamide and fiber glass

Fixed glass

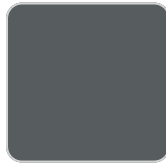
Ref. 65035V



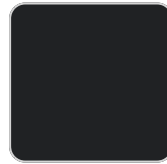
white



british gray



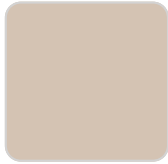
traffic gray



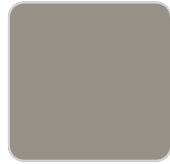
black



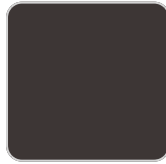
ecru



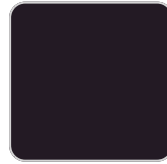
crema



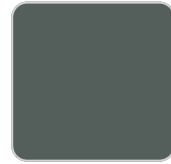
castoro fiber



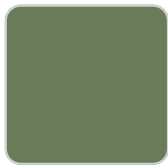
bronze



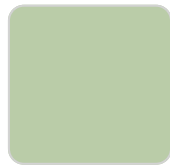
notte blue



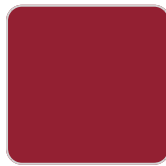
modo green



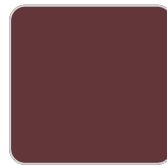
pickle



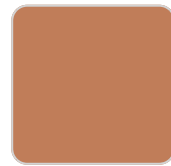
almond



red



purjai red



melon



mostaza

Powder coated aluminum base with non collapsable aluminum attachment powder coated, made exclusively for our glass tops.

Mari-sol 3-legged double table base

by Eugeni Quitllet

Mari-sol Collection, designed by Eugeni Quitllet for Vondom, is composed by a design table that **combines technology in its function with sensuality** in its shape. The answer for adorning terraces around the world.



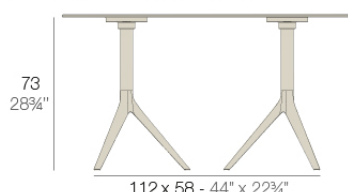
Info

Description

Extruded aluminum tube with cast aluminum base coated with epoxy baked painting. Item suitable for indoor and outdoor use. Table top not included.

Weight: 6.88 Kg

BASE 3 LEGS - BASE 3 PATAS



fixed top / fijo *ref.6503I*

collapsible top / abatible *ref.6503IT*

MARI-SOL BASE DOBLE 112x58 H73

MARI-SOL DOUBLE BASE 44x22 3/4" H28 3/4"

TABLE TOPS OPTIONS - OPCIONES SOBRES



119 x 69 cm

46 3/4" x 27 1/4"

Finishes

finishes

Fixed

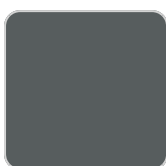
Ref. 65031



white



british gray



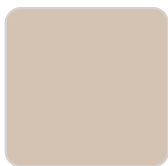
traffic gray



black



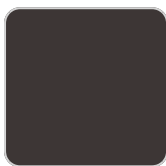
ecru



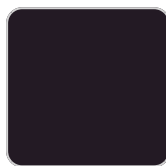
crema



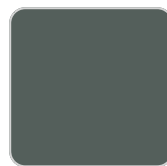
castoro fiber



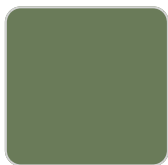
bronze



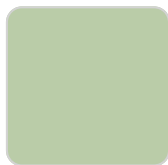
notte blue



modo green



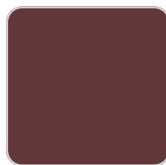
pickle



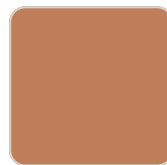
almond



red



purjai red



melon



mostaza

Powder coated aluminum base with non collapsable attachment made of polyamide and fiber glass

COLLAPSIBLE TOP

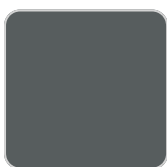
Ref. 65031T



white



british gray



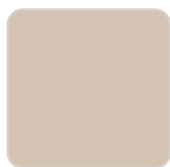
traffic gray



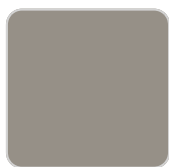
black



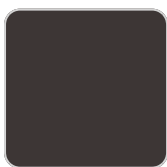
ecru



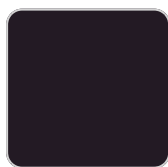
crema



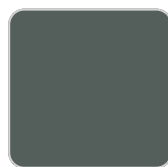
castoro fiber



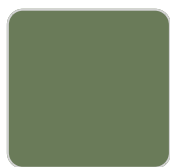
bronze



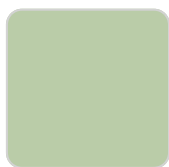
notte blue



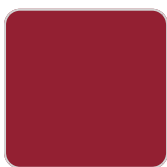
modo green



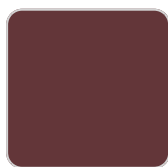
pickle



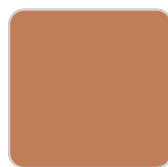
almond



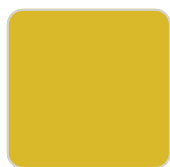
red



purjai red



melon



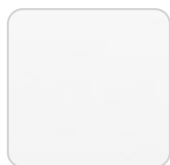
mostaza

Powder coated aluminum base with 90° collapsable attachment made of polyamide and fiber glass

tabletops

HPL

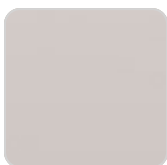
Ref. 66031



white



black



ecru

HPL black edge

Mari-sol 4-legged double table base

by Eugeni Quitllet

Mari-sol Collection, designed by Eugeni Quitllet for Vondom, is composed by a design table that **combines technology in its function with sensuality** in its shape. The answer for adorning terraces around the world.



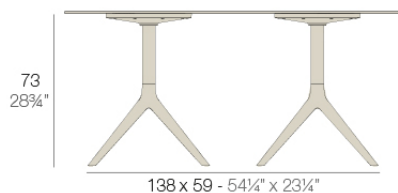
Info

Description

Extruded aluminum tube with cast aluminum base coated with epoxy baked painting. Item suitable for indoor and outdoor use. Table top not included.

Weight: 9.8 Kg

BASE 4 LEGS - BASE 4 PATAS



fixed top / fijo ref:65032

MARI-SOL BASE DOBLE 138x59 H73

MARI-SOL DOUBLE BASE 54 1/4 x 23 1/4" H28 3/4"

TABLE TOPS OPTIONS - OPCIONES SOBRES



158 x 79 cm

62 1/4" x 31"

Finishes

finishes

Fixed

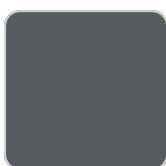
Ref. 65032



white



british gray



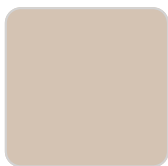
traffic gray



black



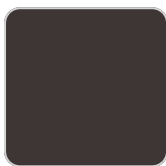
ecru



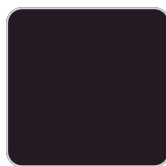
crema



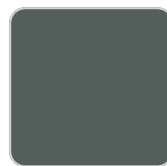
castoro fiber



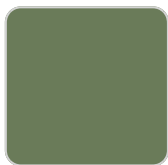
bronze



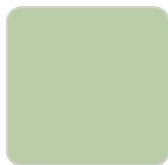
notte blue



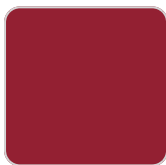
modo green



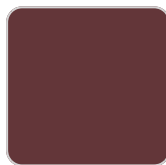
pickle



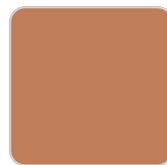
almond



red



purjai red



melon



mostaza

Powder coated aluminum base with non collapsable attachment made of polyamide and fiber glass

tabletops

Solid Core
Ref. 66413B

SOLID CORE

HPL
Ref. 66413

HPL black edge

