

Mari-sol table base h:105cm

by Eugeni Quitllet

Mari-sol Collection, designed by Eugeni Quitllet for Vondom, is composed by a design table that **combines technology in its function with sensuality** in its shape. The answer for adorning terraces around the world.



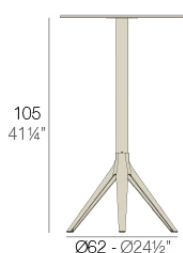
Info

Description

Extruded aluminum tube with cast aluminum base coated with epoxy baked painting. Item suitable for indoor and outdoor use. Table top not included.

Weight: 3.84 Kg

BASE 3 LEGS - BASE 3 PATAS



fixed top / fijo ref: 65011

collapsible top / abatible ref: 65011T

fixed for glass / fijo para vidrio ref: 65011V

MARI-SOL BASE MESA Ø62 H105

MARI-SOL TABLE BASE Ø24 1/2" H41 1/4"

TABLE TOPS OPTIONS - OPCIONES SOBRES



Ø50 cm

Ø19 1/4"



50 x 50 cm

19 1/4" x 19 1/4"



Ø59 cm

Ø23 1/4"



59 x 59 cm

23 1/4" x 23 1/4"

Finishes

finishes

Fixed

Ref. 65011



white



british gray



traffic gray



black



ecru



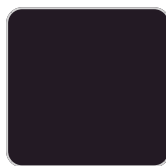
crema



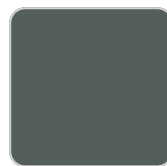
castoro fiber



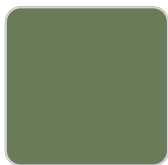
bronze



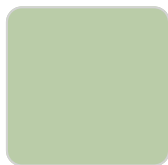
notte blue



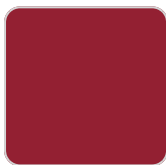
modo green



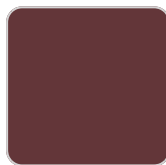
pickle



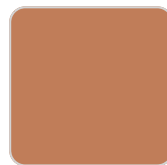
almond



red



purjai red



melon



mostaza

Powder coated aluminum base with non collapsable attachment made of polyamide and fiber glass

COLLAPSIBLE TOP

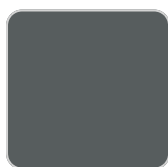
Ref. 65011T



white



british gray



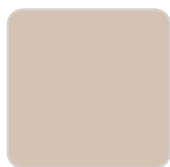
traffic gray



black



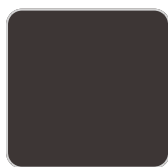
ecru



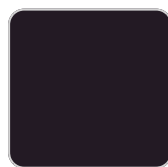
crema



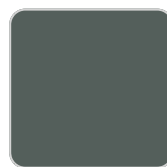
castoro fiber



bronze



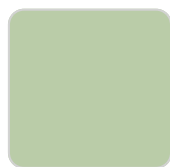
notte blue



modo green



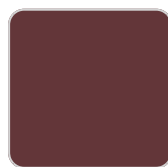
pickle



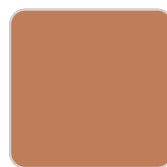
almond



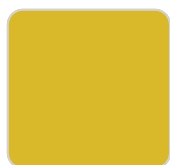
red



purjai red



melon



mostaza

Powder coated aluminum base with 90° collapsable attachment made of polyamide and fiber glass

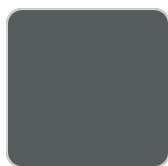
Fixed glass
Ref. 65011V



white



british gray



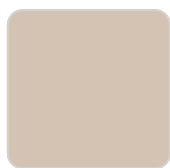
traffic gray



black



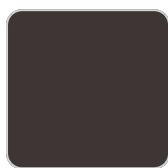
ecru



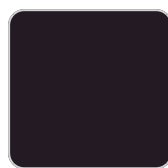
crema



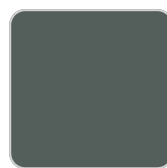
castoro fiber



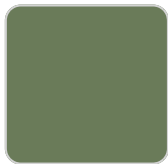
bronze



notte blue



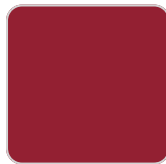
modo green



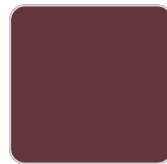
pickle



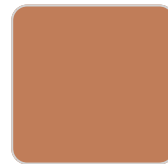
almond



red



purjai red



melon



mostaza

Powder coated aluminum base with non collapsable aluminum attachment powder coated, made exclusively for our glass tops.

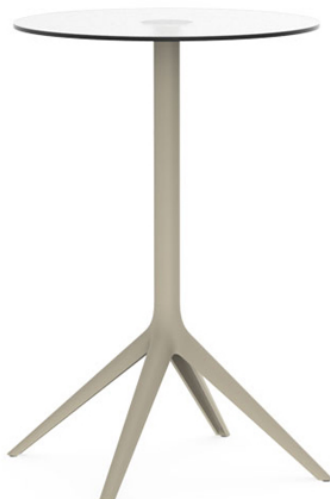
Ambients



Mari-sol table base ø80 h:105cm

by Eugeni Quitllet

Mari-sol Collection, designed by Eugeni Quitllet for Vondom, is composed by a design table that **combines technology in its function with sensuality** in its shape. The answer for adorning terraces around the world.



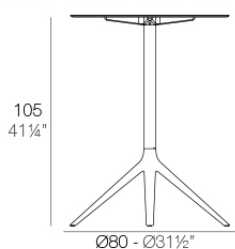
Info

Description

Extruded aluminum tube with cast aluminum base coated with epoxy baked painting. Item suitable for indoor and outdoor use. Table top not included.

Weight: 4.67 Kg

BASE 4 LEGS - BASE 4 PATAS



fixed top / fijo ref: 65020

fixed for glass / fijo para vidrio ref: 65020V

MARI-SOL BASE MESA Ø80 H105

MARI-SOL TABLE BASE Ø31 1/2" H41 1/4"

TABLE TOPS OPTIONS - OPCIONES SOBRES



69 x 69 cm

27 1/4" x 27 1/4"

Finishes

finishes

Fixed

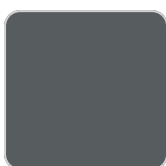
Ref. 65020



white



british gray



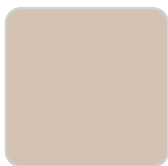
traffic gray



black



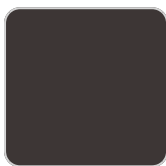
ecru



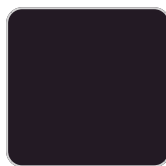
crema



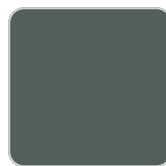
castoro fiber



bronze



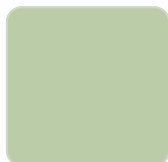
notte blue



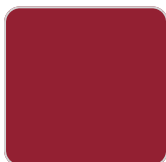
modo green



pickle



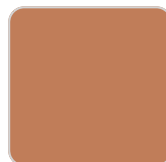
almond



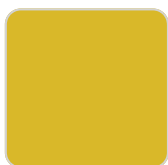
red



purjai red



melon



mostaza

Powder coated aluminum base with non collapsable attachment made of polyamide and fiber glass

Fixed glass

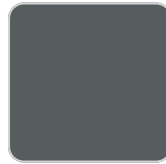
Ref. 65020V



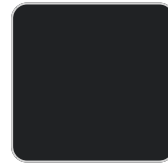
white



british gray



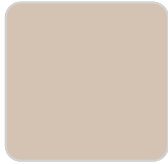
traffic gray



black



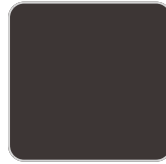
ecru



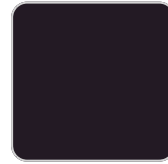
crema



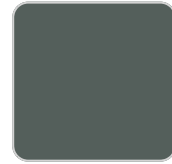
castoro fiber



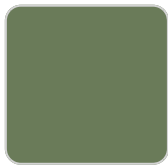
bronze



notte blue



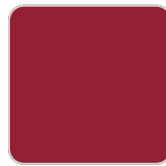
modo green



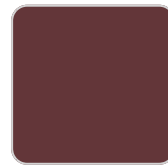
pickle



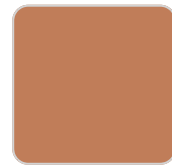
almond



red



purjai red



melon



mostaza

Powder coated aluminum base with non collapsable aluminum attachment powder coated, made exclusively for our glass tops.

Ambients



