

## Manta cantilever

by Eugeni Quitllet

New outdoor and indoor chair collection. The versatile Manta chair adapts perfectly to any space, whether in a home, office, or public setting. This is all possible thanks to an interchangeable design made up of seats and bases to create countless combinations.

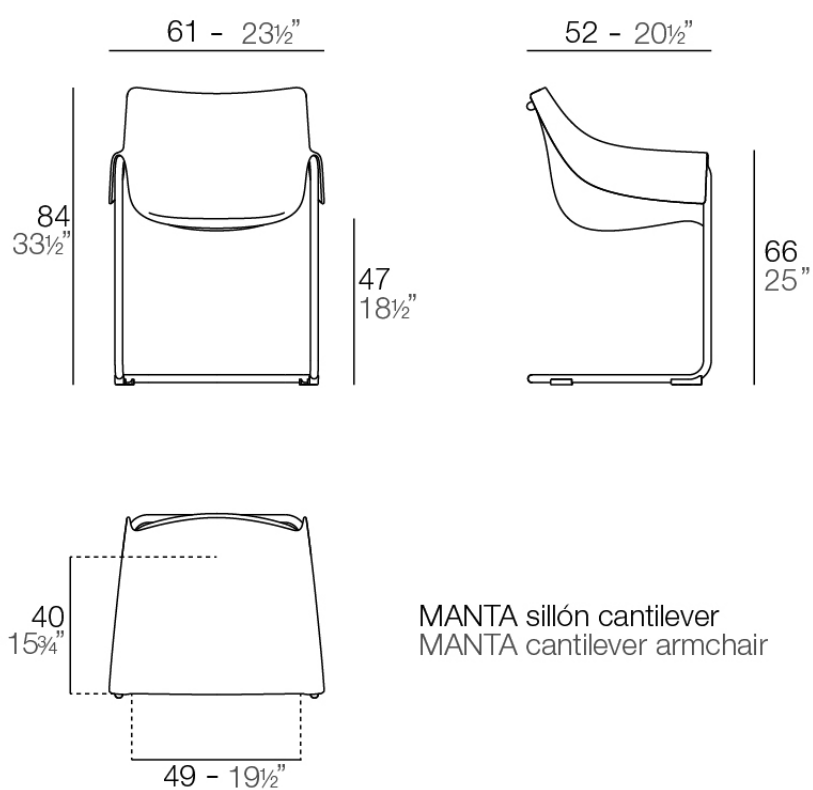


## Info

---

### Description

Weight: 5.6 Kg



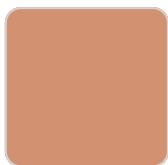
## Finishes

---

### finishes

---

BASIC PP  
Ref. 65047



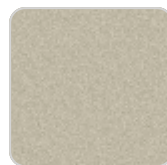
melon



white



black



ecru



tortora

Available in various colors

## Ambients

---



## Manta swivel armchair

by Eugeni Quitllet

New outdoor and indoor chair collection. The versatile Manta chair adapts perfectly to any space, whether in a home, office, or public setting. This is all possible thanks to an interchangeable design made up of seats and bases to create countless combinations.

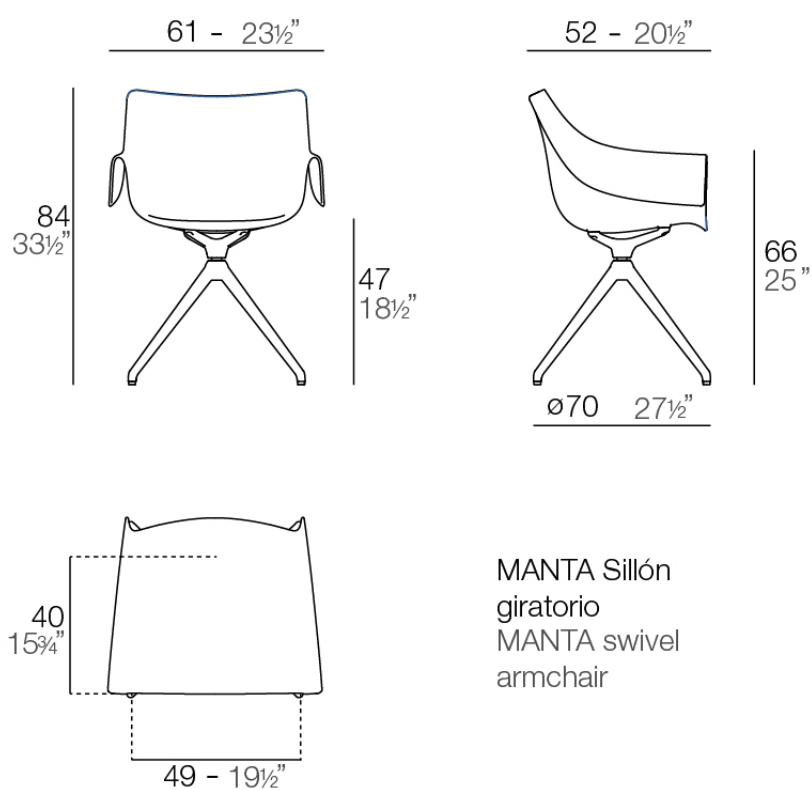


## Info

---

### Description

Weight: 8.61 Kg



MANTA Sillón  
giratorio  
MANTA swivel  
armchair

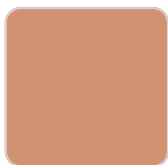
## Finishes

---

### finishes

---

BASIC PP  
Ref. 65053



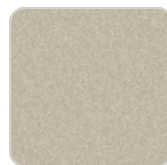
melon



white



black



ecru



tortora

Available in various colors

## Ambients

---





## Manta swivel caster armchair

by Eugeni Quitllet

New outdoor and indoor chair collection. The versatile Manta chair adapts perfectly to any space, whether in a home, office, or public setting. This is all possible thanks to an interchangeable design made up of seats and bases to create countless combinations.

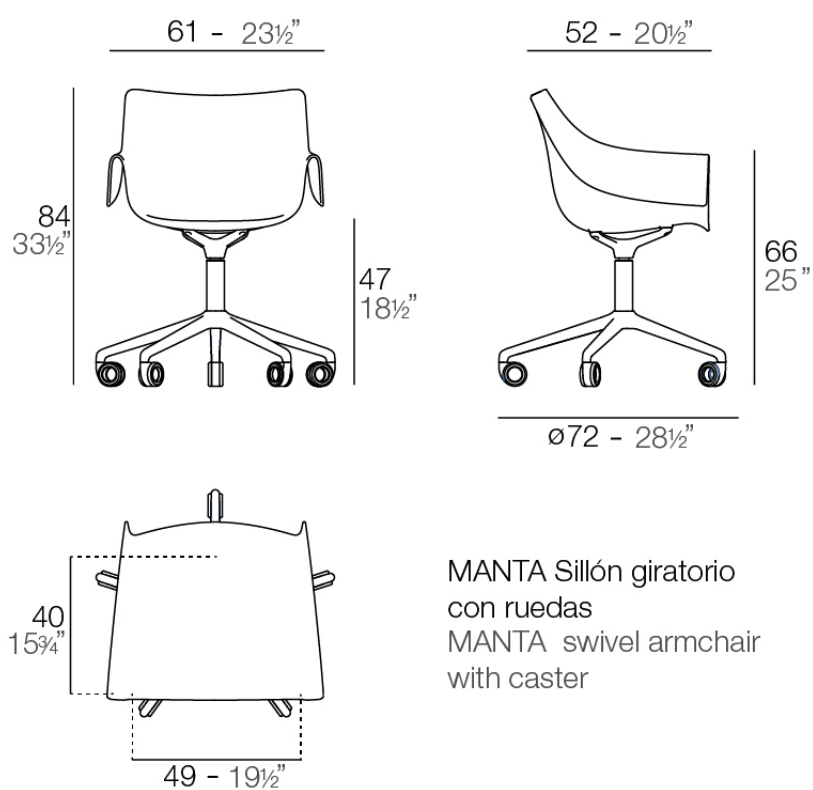


## Info

---

### Description

Weight: 7.53 Kg



MANTA Sillón giratorio  
con ruedas  
MANTA swivel armchair  
with caster

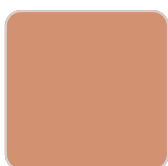
## Finishes

---

### finishes

---

BASIC PP  
Ref. 65054



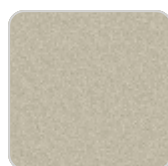
melon



white



black



ecru



tortora

Available in various colors

## Ambients

---



## Manta wooden swivel armchair

by Eugeni Quitllet

New outdoor and indoor chair collection. The versatile Manta chair adapts perfectly to any space, whether in a home, office, or public setting. This is all possible thanks to an interchangeable design made up of seats and bases to create countless combinations.

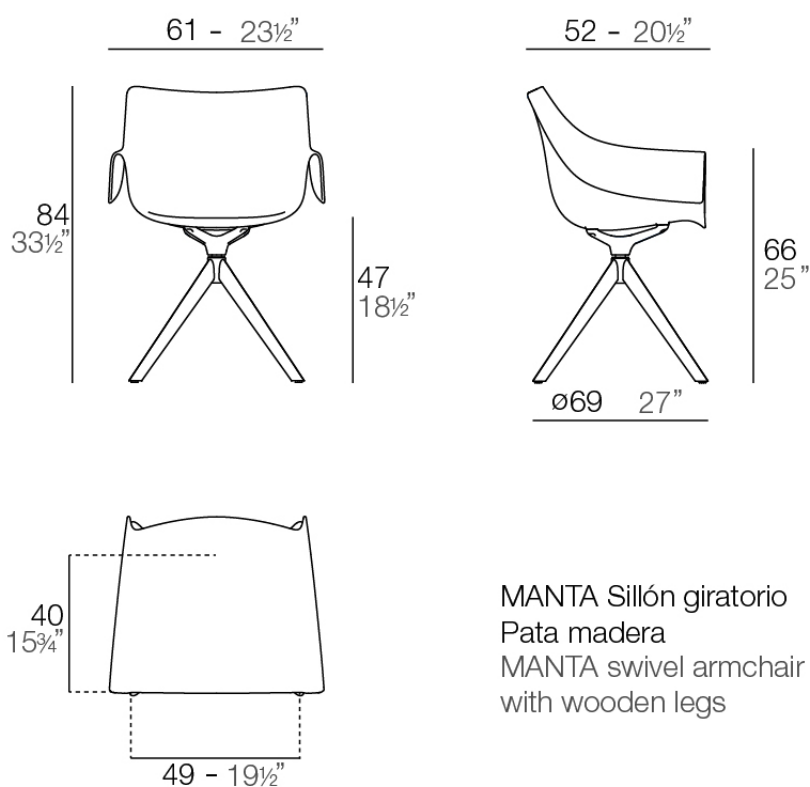


## Info

---

### Description

Weight: 9.3 Kg



MANTA Sillón giratorio  
Pata madera  
MANTA swivel armchair  
with wooden legs

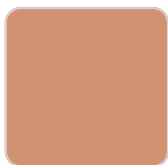
## Finishes

---

### finishes

---

BASIC PP  
Ref. 65055



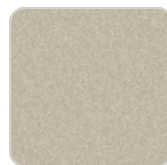
melon



white



black



ecru



tortora

Available in various colors

## Ambients

---

