

Products / High Tables / Frame Bar Table 50x50x100

# Frame bar table 50x50x100

by Ramón Esteve

Frame, outdoor collection by Ramon Esteve, comes from generating serene and timeless shapes using the framework as elementary geometry. The endless possibilities offered by the material using advanced technology, was the motivation to explore the limits.



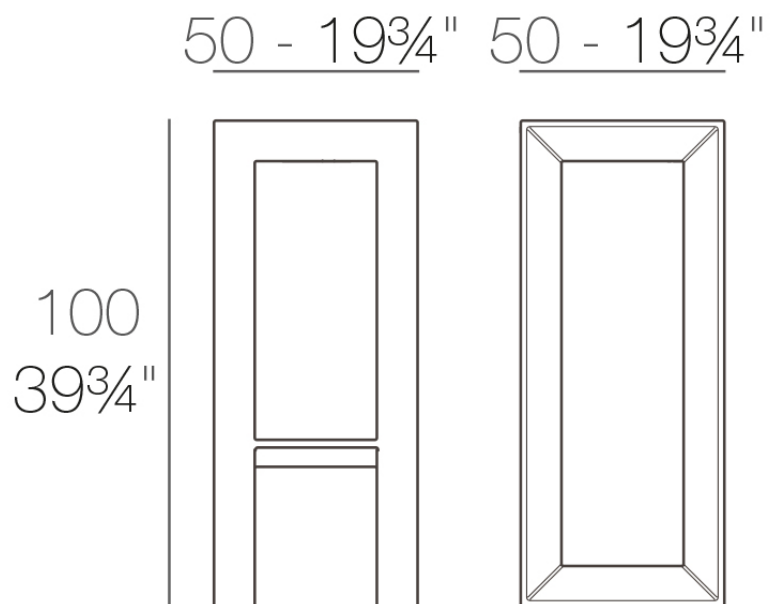
# Info

---

## Description

Made of polyethylene resin by rotational moulding. 100% Recyclable. Item suitable for indoor and outdoor use. Available in different finishes.

Weight: 10 Kg



FRAME Mesa Alta

FRAME Bar Table

# Finishes

---

## finishes

---

### BASIC

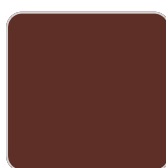
Ref. 54075



crema



green



purjai red



orange



notte blue



white



black



steel



red



khaki



taupe



ecru



beige

### Matt Polyethylene

### LACQUERED

Ref. 54075F



purjai red



white



black



steel



red



khaki



taupe



ecru



beige



modo green



bronze



anthracite



champany

## Lacquered Polyethylene

# Ambients

---



Products / High Tables / Frame Aluminium Table 140x60x105

# Frame aluminium table 140x60x105

by Ramón Esteve

Frame, outdoor collection by Ramon Esteve, comes from generating serene and timeless shapes using the framework as elementary geometry. The endless possibilities offered by the material using advanced technology, was the motivation to explore the limits.



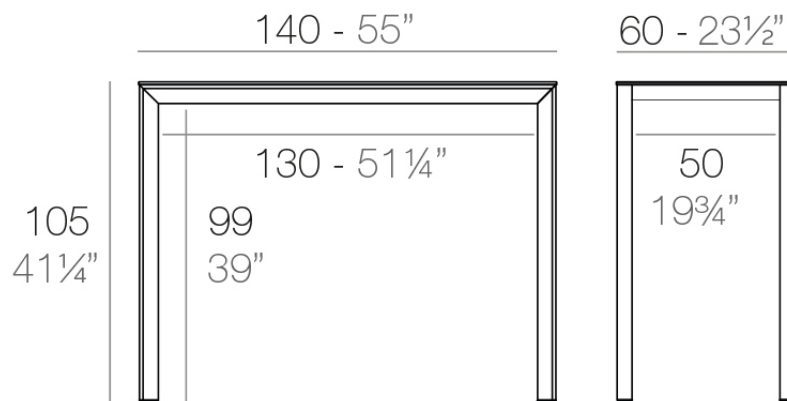
# Info

---

## Description

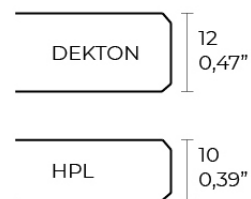
Extruded aluminum with cast lacquered aluminum base. HPL Table top ó Dekton Table top. Item suitable for indoor and outdoor use. HPL Table top.

Weight: 25.58 Kg



FRAME Mesa Alta Aluminio 140 x 60

FRAME Bar Table Aluminium 55" x 23½"



# Finishes

---

## finishes

---

### LACQUERED

Ref. 54243F



white



black



ecru

Lacquered aluminium profile.

### LACQUERED + SOLID CORE

Ref. 54243FB



white

Lacquered aluminium profile.

### LACQUERED + DEKTON

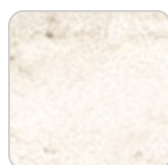
Ref. 54243FM



kelya



entzo



danae



Lacquered aluminium profile.

## tableros

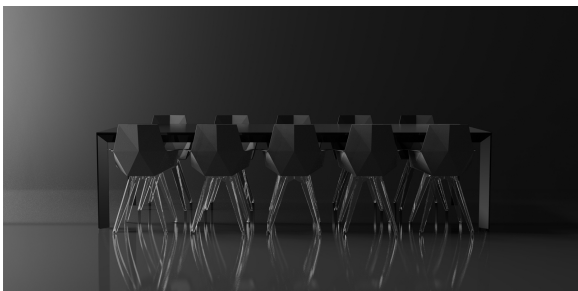
---

TABLE

Ref. VVAR02837

# Ambients

---



Products / High Tables / Frame Aluminium Table 200x60x105

# Frame aluminium table 200x60x105

by Ramón Esteve

Frame, outdoor collection by Ramon Esteve, comes from generating serene and timeless shapes using the framework as elementary geometry. The endless possibilities offered by the material using advanced technology, was the motivation to explore the limits.



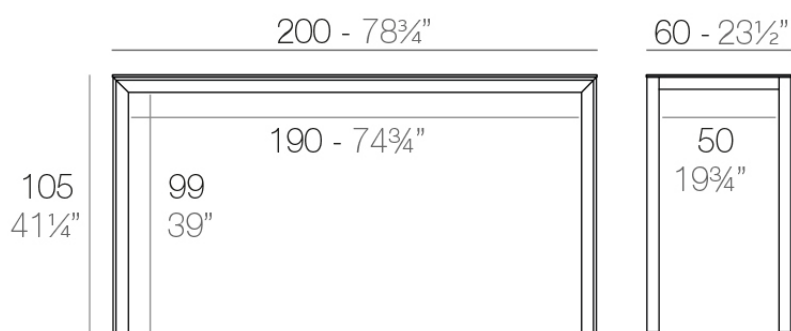
# Info

---

## Description

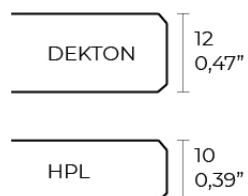
Extruded aluminum with cast lacquered aluminum base. HPL Table top ó Dekton Table top. Item suitable for indoor and outdoor use. HPL Table top.

Weight: 30.15 Kg



FRAME Mesa Alta Aluminio 200 x 60

FRAME Bar Table Aluminio 78 $\frac{3}{4}$ " x 23 $\frac{1}{2}$ "



# Finishes

---

## finishes

---

### LACQUERED

Ref. 54244F



white



black



ecru

Lacquered aluminium profile.

### LACQUERED + SOLID CORE

Ref. 54244FB



white

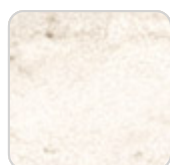
Lacquered aluminium profile.

### LACQUERED + DEKTON

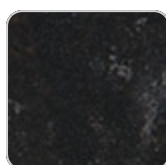
Ref. 54244FM



entzo



danae



kelya

Lacquered aluminium profile.

## tableros

---

TABLE

Ref. VVAR02840

# Ambients

---

