

Faz table base h:73cm

by Ramón Esteve

Faz is a modular collection of outdoor furniture and planters designed by Ramón Esteve for Vondom. He is the architect of harmony, serenity, timelessness and universality, and he has created mineral and emphatic shapes that make Faz a design that contextualizes with homes and installations. An ambience, encircling as a result of the blissful combination of the material and lighting, so that the sole sensation would be its fusion.



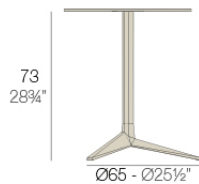
Info

Description

Extruded aluminum tube with cast aluminum base coated with epoxy baked painting. Item suitable for indoor and outdoor use. Table top not included.

Weight: 4.17 Kg

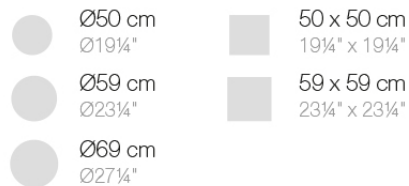
BASE 3 LEGS - BASE 3 PATAS



fixed top / fijo ref. 54126
collapsible top / abatible ref. 54126T
fixed for glass / fijo para vidrio ref. 54126V

FAZ BASE MESA Ø65 H73
FAZ TABLE BASE Ø25 1/2" H28 3/4"

TABLE TOPS OPTIONS - OPCIONES SOBRES



Finishes

finishes

Fixed

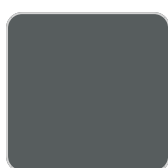
Ref. 54126



white



british gray



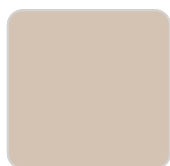
traffic gray



black



ecru



crema



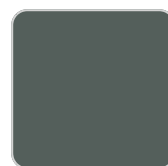
castoro fiber



bronze



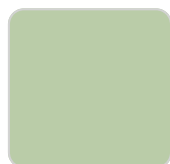
notte blue



modo green



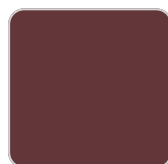
pickle



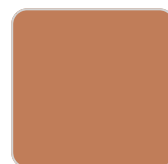
almond



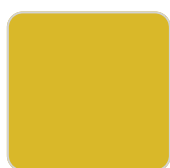
red



purjai red



melon



mostaza

Powder coated aluminum base with non collapsable attachment made of polyamide and fiber glass

COLLAPSIBLE TOP

Ref. 54126T

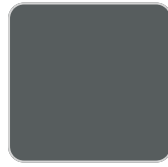
VONDOM



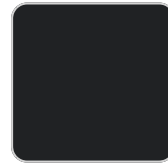
white



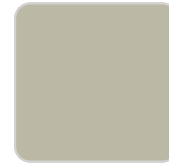
british gray



traffic gray



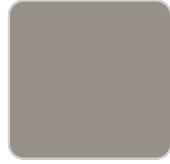
black



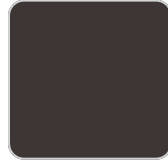
ecru



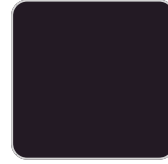
crema



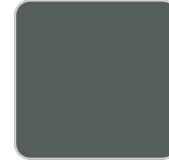
castoro fiber



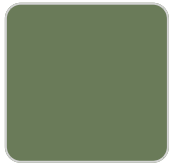
bronze



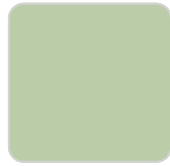
notte blue



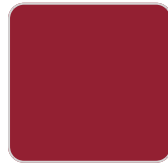
modo green



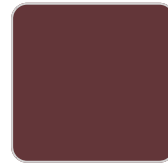
pickle



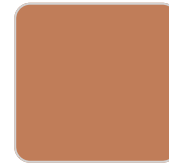
almond



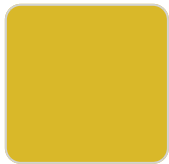
red



purjai red



melon



mostaza

Powder coated aluminum base with 90° collapsable attachment made of polyamide and fiber glass

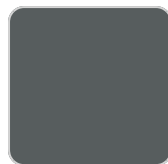
Fixed glass
Ref. 54126V



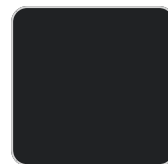
white



british gray



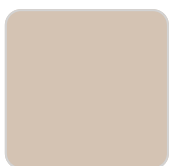
traffic gray



black



ecru



crema



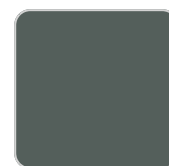
castoro fiber



bronze

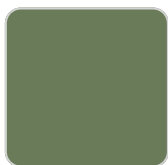


notte blue

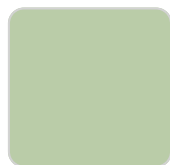


modo green

VONDOM



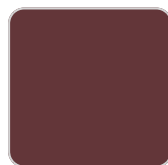
pickle



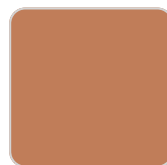
almond



red



purjai red



melon



mostaza

Powder coated aluminum base with non collapsable aluminum attachment powder coated, made exclusively for our glass tops.

Ambients



Faz table base ø80x73h

by Ramón Esteve

Faz is a modular collection of outdoor furniture and planters designed by Ramón Esteve for Vondom. He is the architect of harmony, serenity, timelessness and universality, and he has created mineral and emphatic shapes that make Faz a design that contextualizes with homes and installations. An ambience, encircling as a result of the blissful combination of the material and lighting, so that the sole sensation would be its fusion.

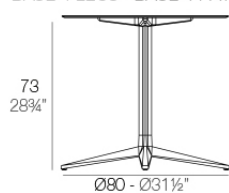


Info

Description

Weight: 5.87 Kg

BASE 4 LEGS - BASE 4 PATAS









fixed top / fijo ref. 54141

fixed for glass / fijo para vidrio ref. 54141V

FAZ BASE MESA Ø80 H73
FAZ TABLE BASE Ø31 1/2" H28 3/4"

TABLE TOPS OPTIONS - OPCIONES SOBRES

 Ø79 cm Ø31"	 69 x 69 cm 27 1/4" x 27 1/4"
 Ø89 cm Ø25"	 79 x 79 cm 31" x 31"
 Ø100 cm Ø39 1/4"	 89 x 89 cm 25" x 25"

Finishes

finishes

Fixed

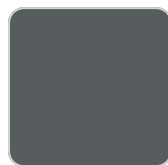
Ref. 54141



white



british gray



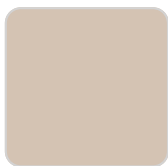
traffic gray



black



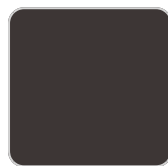
ecru



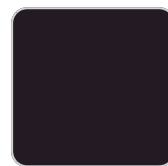
crema



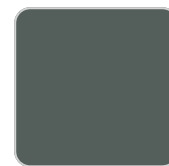
castoro fiber



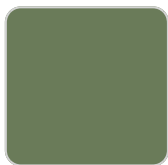
bronze



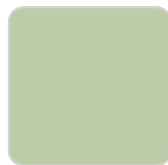
notte blue



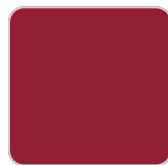
modo green



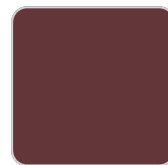
pickle



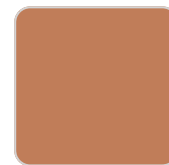
almond



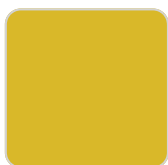
red



purjai red



melon



mostaza

Powder coated aluminum base with non collapsable attachment made of polyamide and fiber glass

Fixed glass

Ref. 54141V

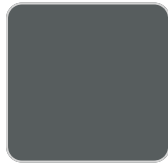
VONDOM



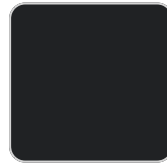
white



british gray



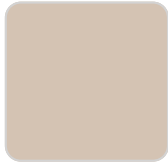
traffic gray



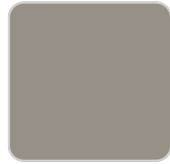
black



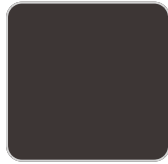
ecru



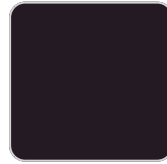
crema



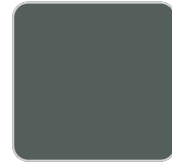
castoro fiber



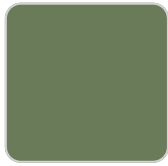
bronze



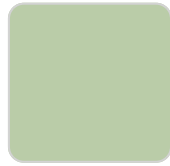
notte blue



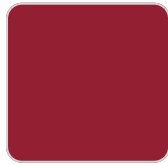
modo green



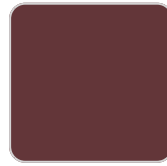
pickle



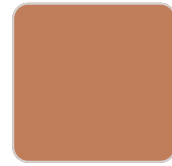
almond



red



purjai red



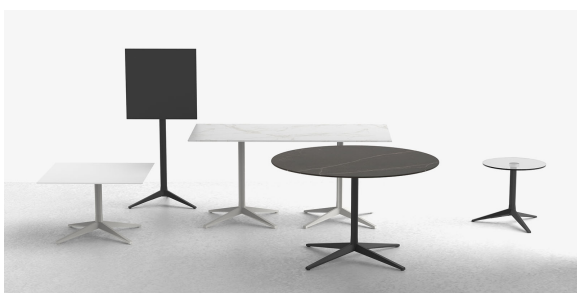
melon



mostaza

Powder coated aluminum base with non collapsable aluminum attachment powder coated, made exclusively for our glass tops.

Ambients



Faz 4-legged table base ø96,5x73h

by Ramón Esteve

Faz is a modular collection of outdoor furniture and planters designed by Ramón Esteve for Vondom. He is the architect of harmony, serenity, timelessness and universality, and he has created mineral and emphatic shapes that make Faz a design that contextualizes with homes and installations. An ambience, encircling as a result of the blissful combination of the material and lighting, so that the sole sensation would be its fusion.



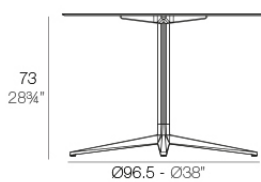
Info

Description

Extruded aluminum tube with cast aluminum base coated with epoxy baked painting. Item suitable for indoor and outdoor use. Table top not included.

Weight: 6.82 Kg

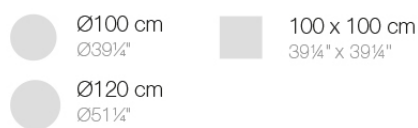
BASE 4 LEGS - BASE 4 PATAS



fixed top / fijo *ref. 54144*

fixed for glass / fijo para vidrio *ref. 54144V*

TABLE TOPS OPTIONS - OPCIONES SOBRES



FAZ BASE MESA Ø96'5 H50
FAZ TABLE BASE Ø38" H19 3/4"

Finishes

finishes

Fixed

Ref. 54144



white



british gray



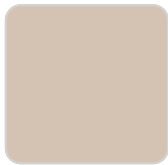
traffic gray



black



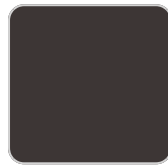
ecru



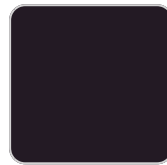
crema



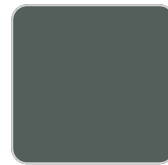
castoro fiber



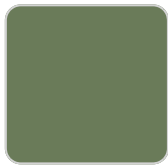
bronze



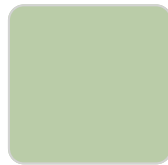
notte blue



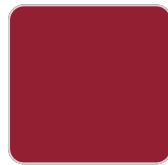
modo green



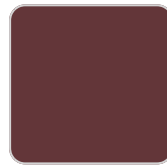
pickle



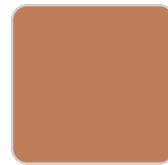
almond



red



purjai red



melon



mostaza

Powder coated aluminum base with non collapsable attachment made of polyamide and fiber glass

Fixed glass

Ref. 54144V

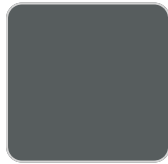
VONDOM



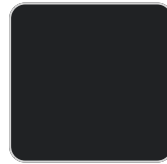
white



british gray



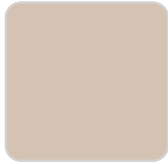
traffic gray



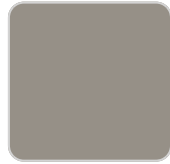
black



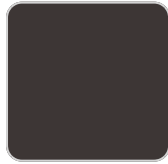
ecru



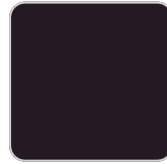
crema



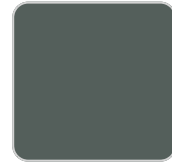
castoro fiber



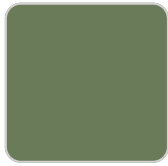
bronze



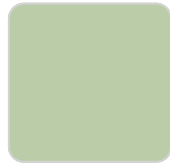
notte blue



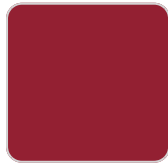
modo green



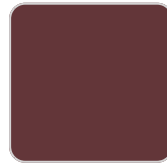
pickle



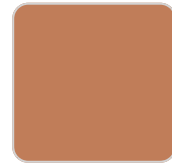
almond



red



purjai red



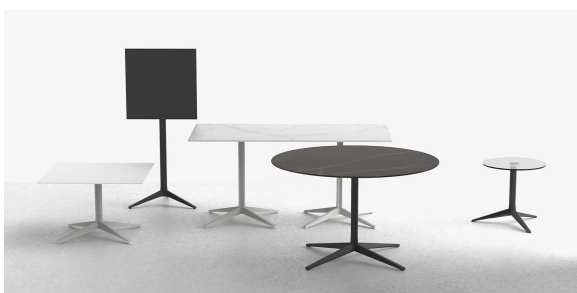
melon



mostaza

Powder coated aluminum base with non collapsable aluminum attachment powder coated, made exclusively for our glass tops.

Ambients



Faz double base 4 leg

by Ramón Esteve

Faz is a modular collection of outdoor furniture and planters designed by Ramón Esteve for Vondom. He is the architect of harmony, serenity, timelessness and universality, and he has created mineral and emphatic shapes that make Faz a design that contextualizes with homes and installations. An ambience, encircling as a result of the blissful combination of the material and lighting, so that the sole sensation would be its fusion.



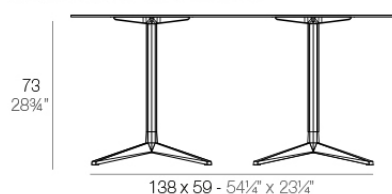
Info

Description

Extruded aluminum tube with cast aluminum base coated with epoxy baked painting. Item suitable for indoor and outdoor use. Table top not included.

Weight: 11.88 Kg

DOUBLE BASE - BASE DOBLE



fixed top / fijo ref. 54167

FAZ BASE BASE 138x59 H73
FAZ DOUBLE BASE 54¼"x23¼" H28¾"

TABLE TOPS OPTIONS - OPCIONES SOBRES



158 x 79 cm
62¼" x 31"

Finishes

finishes

Fixed

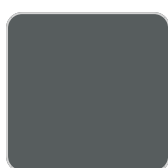
Ref. 54167



white



british gray



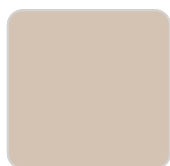
traffic gray



black



ecru



crema



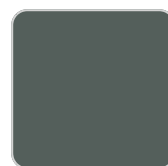
castoro fiber



bronze



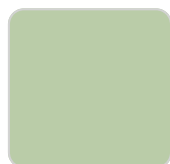
notte blue



modo green



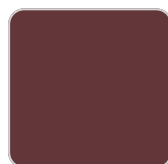
pickle



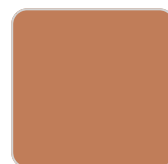
almond



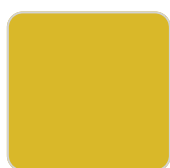
red



purjai red



melon



mostaza

Powder coated aluminum base with non collapsable attachment made of polyamide and fiber glass

Ambients



Faz 3-legged double table base

by Ramón Esteve

Faz is a modular collection of outdoor furniture and planters designed by Ramón Esteve for Vondom. He is the architect of harmony, serenity, timelessness and universality, and he has created mineral and emphatic shapes that make Faz a design that contextualizes with homes and installations. An ambience, encircling as a result of the blissful combination of the material and lighting, so that the sole sensation would be its fusion.



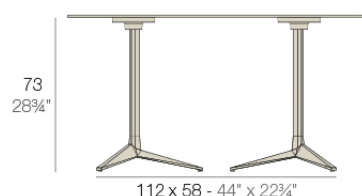
Info

Description

Extruded aluminum tube with cast aluminum base coated with epoxy baked painting. Item suitable for indoor and outdoor use. Table top not included.

Weight: 8.39 Kg

DOUBLE BASE - BASE DOBLE



fixed top / fijo *ref. 54166*
collapsible top / abatible *ref. 54166T*

FAZ BASE DOBLE 112x58 H73
FAZ DOUBLE BASE 44x22 3/4" H28 3/4"

TABLE TOPS OPTIONS - OPCIONES SOBRES



Finishes

finishes

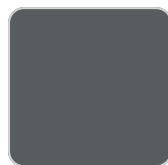
Fixed
Ref. 54166



white



british gray



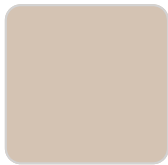
traffic gray



black



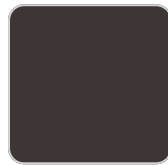
ecru



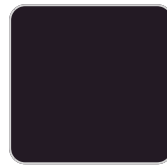
crema



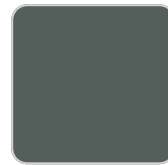
castoro fiber



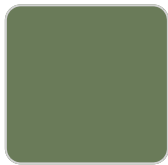
bronze



notte blue



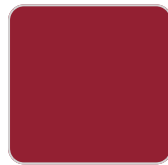
modo green



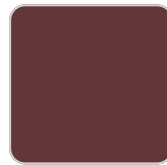
pickle



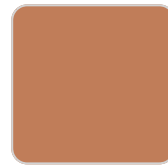
almond



red



purjai red



melon



mostaza

Powder coated aluminum base with non collapsable attachment made of polyamide and fiber glass

COLLAPSIBLE TOP
Ref. 54166T

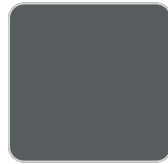
VONDOM



white



british gray



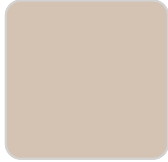
traffic gray



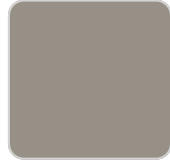
black



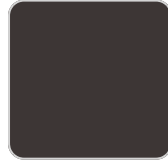
ecru



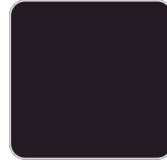
crema



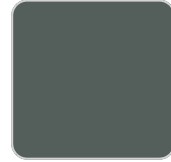
castoro fiber



bronze



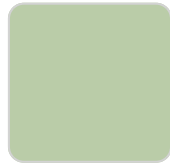
notte blue



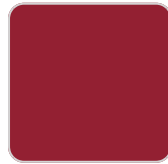
modo green



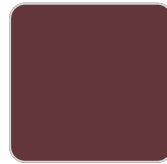
pickle



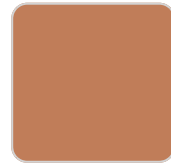
almond



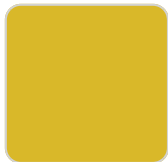
red



purjai red



melon



mostaza

Powder coated aluminum base with 90° collapsable attachment made of polyamide and fiber glass

Ambients

