

Delta table base h:105cm

by Jorge Pensi

The Delta furniture design collection, designed by Jorge Pensi for Vondom. Is made to fit in with exterior or interior contemporary spaces.

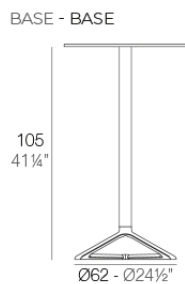


Info

Description

Extruded aluminum tube with cast aluminum base coated with epoxy baked painting. Item suitable for indoor and outdoor use. Table top not included.

Weight: 1.05 Kg



fixed top / fijo *ref: 66008*
collapsible top / abatible *ref: 66008T*
fixed for glass / fijo para vidrio *ref: 66008V*

DELTA BASE MESA Ø62 H105
DELTA TABLE BASE Ø24 1/2" H41 1/4"

TABLE TOPS OPTIONS - OPCIONES SOBRES

● Ø50 cm Ø19 1/4"	■ 50 x 50 cm 19 1/4" x 19 1/4"
● Ø59 cm Ø23 1/4"	■ 59 x 59 cm 23 1/4" x 23 1/4"

Finishes

finishes

Fixed

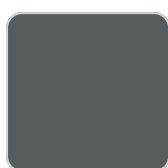
Ref. 66008



white



british gray



traffic gray



black



ecru



crema



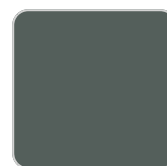
castoro fiber



bronze



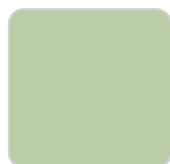
notte blue



modo green



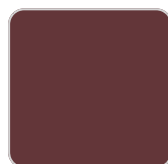
pickle



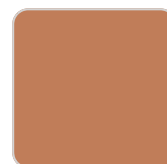
almond



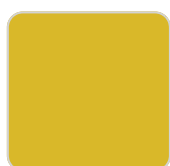
red



purjai red



melon



mostaza

Powder coated aluminum base with non collapsable attachment made of polyamide and fiber glass

COLLAPSIBLE TOP

Ref. 66008T

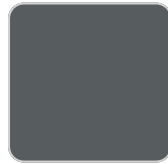
VONDOM



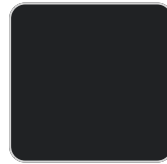
white



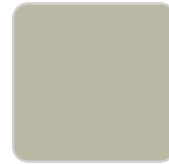
british gray



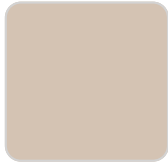
traffic gray



black



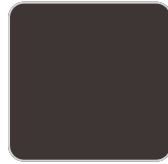
ecru



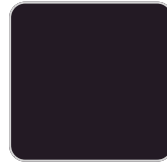
crema



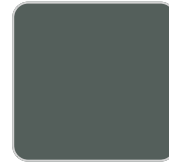
castoro fiber



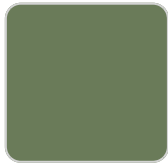
bronze



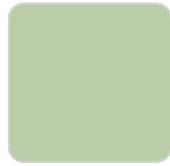
notte blue



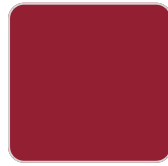
modo green



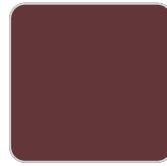
pickle



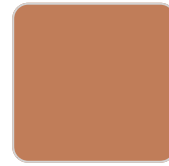
almond



red



purjai red



melon



mostaza

Powder coated aluminum base with 90° collapsable attachment made of polyamide and fiber glass

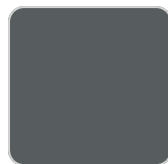
Fixed glass
Ref. 66008V



white



british gray



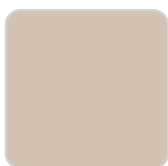
traffic gray



black



ecru



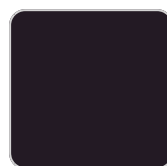
crema



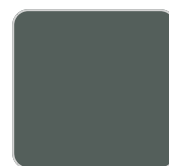
castoro fiber



bronze



notte blue



modo green

VONDOM



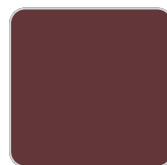
pickle



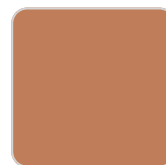
almond



red



purjai red



melon



mostaza

Powder coated aluminum base with non collapsable aluminum attachment powder coated, made exclusively for our glass tops.

