

Chemistubes flask ø36x65

by Teresa Sapey

CHEMISTUBES, is based on “decontextualization”. A new object is produced through increasing the size (intervention in scale), using different materials to the original one (in this case, the ecological material of resin of polyethylene using the technique of rotational moulding), and changing the original use for which an object was first designed. What a laboratory container was before is now a designer planter decorative IN&OUT item.

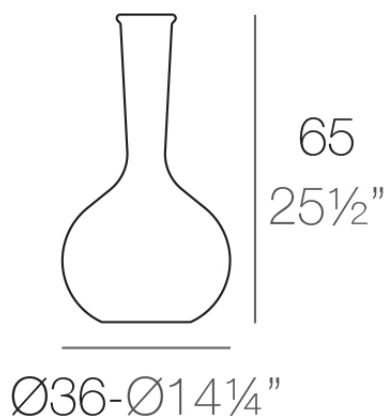


Info

Description

Made of polyethylene resin by rotational moulding. 100% Recyclable. Item suitable for indoor and outdoor use. Available in different finishes.

Weight: 3.19 Kg



FLASK Maceta 65

C = 5 L

FLASK Planter 65

C = 1½ gal

Finishes

finishes

LACQUERED

Ref. 49036F



modo green



purjai red



white



black



bronze



steel



anthracite



champany



red



khaki



taupe



ecru



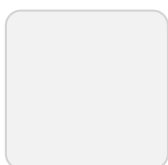
beige

Lacquered Polyethylene

lighting

WHITE LED

Ref. 49036W



ice

White internally lit unit with LED technology. Available only in matte ice white finish.

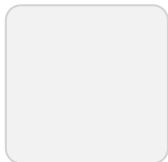
RGBW LED Ref. 49036L



ice

Unit with internal lighting with RGBW LED technology and remote control unit for switching colors. Available only in matte ice white finish. Remote control included.

RGBW LED DMX Ref. 49036D



ice

Unit with internal lighting with RGBW LED technology and remote control unit for switching colors. Also controlled by DMX-1024 (wireless), enabling communication between one or more products simultaneously via the DMX transmitter (not included). There are two options to choose from: Professional XLR DMX and Home WIFI DMX. (Remote control included). Optional battery

RGBW LED BATTERY Ref. 49036Y

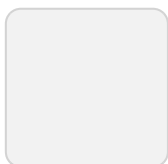


ice

Unit with internal lighting with battery-powered RGBW LED technology. Includes charger and remote control for switching colors and charger. Available only in matte ice white finish.

RGBW LED DMX BATTERY

Ref. 49036DY



ice

Unit with internal lighting with RGBW LED technology and remote control unit for switching colors. Also controlled by DMX-1024 (wireless), enabling communication between one or more products simultaneously via the DMX transmitter (not included). There are two options to choose from: Professional XLR DMX and Home WIFI DMX. (Remote control included).

Ambients



Chemistubes flask ø55x100

by Teresa Sapey

CHEMISTUBES, is based on “decontextualization”. A new object is produced through increasing the size (intervention in scale), using different materials to the original one (in this case, the ecological material of resin of polyethylene using the technique of rotational moulding), and changing the original use for which an object was first designed. What a laboratory container was before is now a designer planter decorative IN&OUT item.

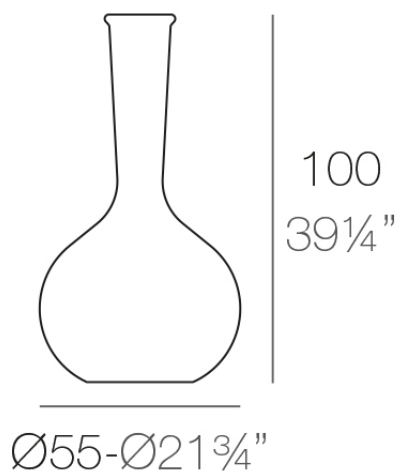


Info

Description

Made of polyethylene resin by rotational moulding. 100% Recyclable. Item suitable for indoor and outdoor use. Available in different finishes.

Weight: 6 Kg



FLASK Maceta 100
FLASK Planter 100

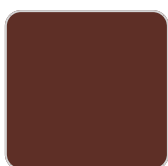
C = 5 L
C = 1 1/2 gal

Finishes

finishes

BASIC

Ref. 49055A



purjai red



white



black



bronze



steel



anthracite



red



khaki



taupe



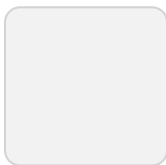
ecru



beige



orange



ice



notte blue



crema



green

Matt Polyethylene

LACQUERED

Ref. 49055F



modo green



purjai red



white



black



bronze



steel



anthracite



champany



red



khaki



taupe



ecru



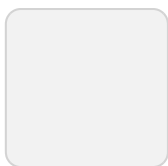
beige

Lacquered Polyethylene

lighting

WHITE LED

Ref. 49055W

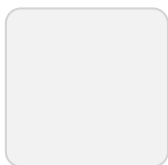


ice

White internally lit unit with LED technology. Available only in matte ice white finish.

RGBW LED

Ref. 49055L

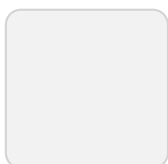


ice

Unit with internal lighting with RGBW LED technology and remote control unit for switching colors. Available only in matte ice white finish. Remote control included.

RGBW LED DMX

Ref. 49055D

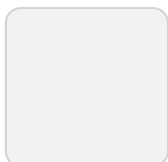


ice

Unit with internal lighting with RGBW LED technology and remote control unit for switching colors. Also controlled by DMX-1024 (wireless), enabling communication between one or more products simultaneously via the DMX transmitter (not included). There are two options to choose from: Professional XLR DMX and Home WIFI DMX. (Remote control included). Optional battery

RGBW LED BATTERY

Ref. 49055Y



ice

Unit with internal lighting with battery-powered RGBW LED technology. Includes charger and remote control for switching colors and charger. Available only in matte ice white finish.

RGBW LED DMX BATTERY

Ref. 49055DY



ice

Unit with internal lighting with RGBW LED technology and remote control unit for switching colors. Also controlled by DMX-1024 (wireless), enabling communication between one or more products simultaneously via the DMX transmitter (not included). There are two options to choose from: Professional XLR DMX and Home WIFI DMX. (Remote control included).

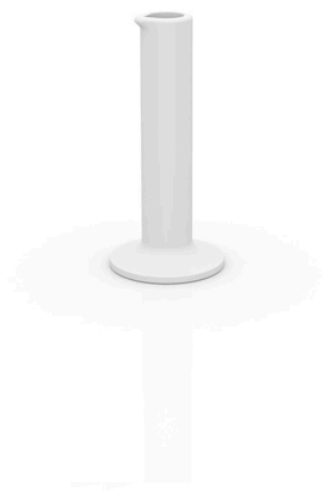
Ambients



Chemistubes pipe ø30x65

by Teresa Sapey

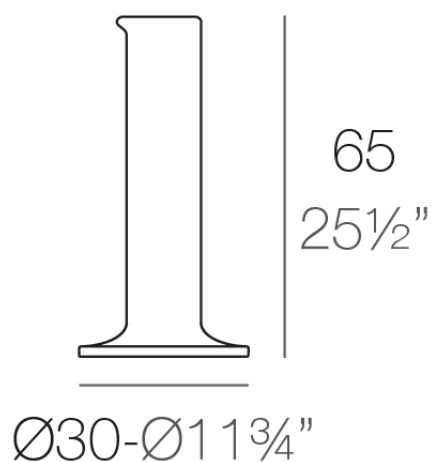
CHEMISTUBES, is based on “decontextualization”. A new object is produced through increasing the size (intervention in scale), using different materials to the original one (in this case, the ecological material of resin of polyethylene using the technique of rotational moulding), and changing the original use for which an object was first designed. What a laboratory container was before is now a designer planter decorative IN&OUT item.



Info

Description

Made of polyethylene resin by rotational moulding. 100% Recyclable. Item suitable for indoor and outdoor use. Available in different finishes.



PIPE Maceta 65

C = 1,5 L

PIPE Planter 65

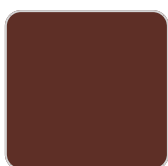
C = ½ gal

Finishes

finishes

BASIC

Ref. 49056A



purjai red



white



black



bronze



steel



anthracite



red



khaki



taupe



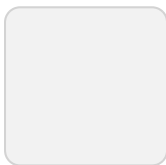
ecru



beige



orange



ice



notte blue



crema



green

Matt Polyethylene

LACQUERED

Ref. 49056F



modo green



purjai red



white



black



bronze



steel



anthracite



champany



red



khaki



taupe



ecru



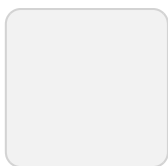
beige

Lacquered Polyethylene

lighting

WHITE LED

Ref. 49056W

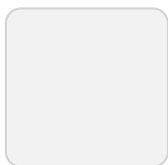


ice

White internally lit unit with LED technology. Available only in matte ice white finish.

RGBW LED

Ref. 49056L

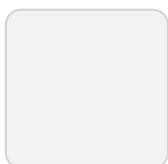


ice

Unit with internal lighting with RGBW LED technology and remote control unit for switching colors. Available only in matte ice white finish. Remote control included.

RGBW LED DMX

Ref. 49056D

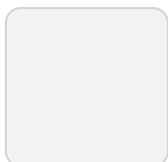


ice

Unit with internal lighting with RGBW LED technology and remote control unit for switching colors. Also controlled by DMX-1024 (wireless), enabling communication between one or more products simultaneously via the DMX transmitter (not included). There are two options to choose from: Professional XLR DMX and Home WIFI DMX. (Remote control included). Optional battery

RGBW LED BATTERY

Ref. 49056Y



ice

Unit with internal lighting with battery-powered RGBW LED technology. Includes charger and remote control for switching colors and charger. Available only in matte ice white finish.

RGBW LED DMX BATTERY

Ref. 49056DY



ice

Unit with internal lighting with RGBW LED technology and remote control unit for switching colors. Also controlled by DMX-1024 (wireless), enabling communication between one or more products simultaneously via the DMX transmitter (not included). There are two options to choose from: Professional XLR DMX and Home WIFI DMX. (Remote control included).

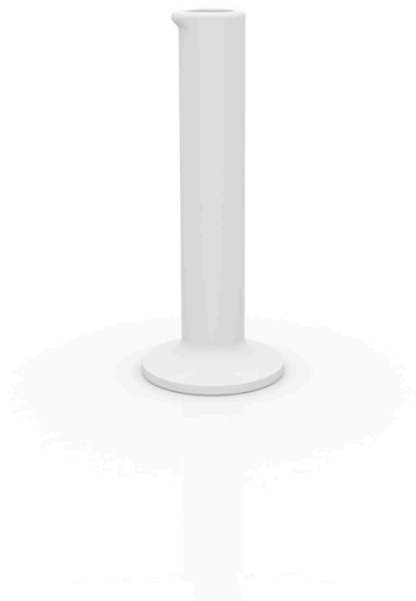
Ambients



Chemistubes pipe ø40x100

by Teresa Sapey

CHEMISTUBES, is based on “decontextualization”. A new object is produced through increasing the size (intervention in scale), using different materials to the original one (in this case, the ecological material of resin of polyethylene using the technique of rotational moulding), and changing the original use for which an object was first designed. What a laboratory container was before is now a designer planter decorative IN&OUT item.

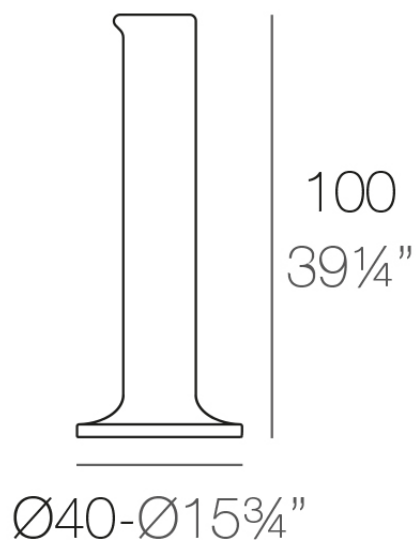


Info

Description

Made of polyethylene resin by rotational moulding. 100% Recyclable. Item suitable for indoor and outdoor use. Available in different finishes.

Weight: 5 Kg



PIPE Maceta 100

C = 3,5 L

PIPE Planter 100

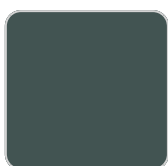
C = 1 gal

Finishes

finishes

BASIC

Ref. 49057A



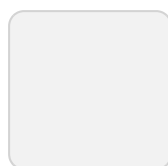
green



purjai red



orange



ice



notte blue



crema



white



black



bronze



steel



anthracite



red



khaki



taupe



ecru



beige

Matt Polyethylene

LACQUERED

Ref. 49057F



purjai red



white



black



bronze



steel



anthracite



red



khaki



taupe



ecru



beige



modo green



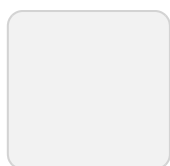
champany

Lacquered Polyethylene

lighting

WHITE LED

Ref. 49057W



ice

White internally lit unit with LED technology. Available only in matte ice white finish.

RGBW LED

Ref. 49057L



ice

Unit with internal lighting with RGBW LED technology and remote control unit for switching colors. Available only in matte ice white finish. Remote control included.

RGBW LED DMX

Ref. 49057D

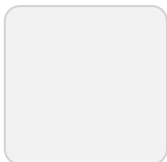


ice

Unit with internal lighting with RGBW LED technology and remote control unit for switching colors. Also controlled by DMX-1024 (wireless), enabling communication between one or more products simultaneously via the DMX transmitter (not included). There are two options to choose from: Professional XLR DMX and Home WIFI DMX. (Remote control included). Optional battery

RGBW LED BATTERY

Ref. 49057Y



ice

Unit with internal lighting with battery-powered RGBW LED technology. Includes charger and remote control for switching colors and charger. Available only in matte ice white finish.

RGBW LED DMX BATTERY

Ref. 49057DY



ice

Unit with internal lighting with RGBW LED technology and remote control unit for switching colors. Also controlled by DMX-1024 (wireless), enabling communication between one or more products simultaneously via the DMX transmitter (not included). There are two options to choose from: Professional XLR DMX and Home WIFI DMX. (Remote control included).

Ambients



Chemistubes erlenmeyer ø36x65

by Teresa Sapey

CHEMISTUBES, is based on “decontextualization”. A new object is produced through increasing the size (intervention in scale), using different materials to the original one (in this case, the ecological material of resin of polyethylene using the technique of rotational moulding), and changing the original use for which an object was first designed. What a laboratory container was before is now a designer planter decorative IN&OUT item.

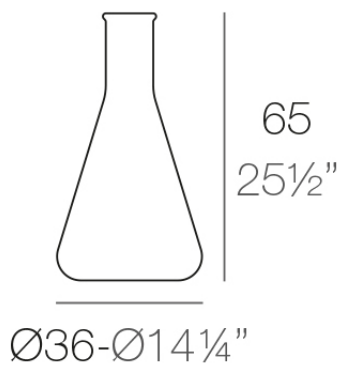


Info

Description

Made of polyethylene resin by rotational moulding. 100% Recyclable. Item suitable for indoor and outdoor use. Available in different finishes.

Weight: 3.5 Kg



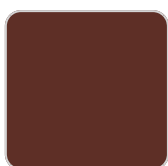
| | |
|-----------------------|-------------|
| ERLENMEYER Maceta 65 | C = 1,5 L |
| ERLENMEYER Planter 65 | C = 1/2 gal |

Finishes

finishes

BASIC

Ref. 49058A



purjai red



white



black



bronze



steel



anthracite



red



khaki



taupe



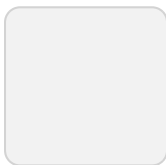
ecru



beige



orange



ice



notte blue



crema



green

Matt Polyethylene

LACQUERED

Ref. 49058F



modo green



purjai red



white



black



bronze



steel



anthracite



champany



red



khaki



taupe



ecru



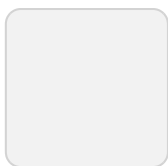
beige

Lacquered Polyethylene

lighting

WHITE LED

Ref. 49058W



ice

White internally lit unit with LED technology. Available only in matte ice white finish.

RGBW LED

Ref. 49058L



ice

Unit with internal lighting with RGBW LED technology and remote control unit for switching colors. Available only in matte ice white finish. Remote control included.

RGBW LED DMX

Ref. 49058D

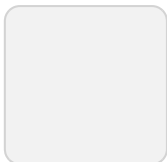


ice

Unit with internal lighting with RGBW LED technology and remote control unit for switching colors. Also controlled by DMX-1024 (wireless), enabling communication between one or more products simultaneously via the DMX transmitter (not included). There are two options to choose from: Professional XLR DMX and Home WIFI DMX. (Remote control included). Optional battery

RGBW LED BATTERY

Ref. 49058Y



ice

Unit with internal lighting with battery-powered RGBW LED technology. Includes charger and remote control for switching colors and charger. Available only in matte ice white finish.

RGBW LED DMX BATTERY

Ref. 49058DY



ice

Unit with internal lighting with RGBW LED technology and remote control unit for switching colors. Also controlled by DMX-1024 (wireless), enabling communication between one or more products simultaneously via the DMX transmitter (not included). There are two options to choose from: Professional XLR DMX and Home WIFI DMX. (Remote control included).

Ambients



Chemistubes erlenmeyer ø55x100

by Teresa Sapey

CHEMISTUBES, is based on “decontextualization”. A new object is produced through increasing the size (intervention in scale), using different materials to the original one (in this case, the ecological material of resin of polyethylene using the technique of rotational moulding), and changing the original use for which an object was first designed. What a laboratory container was before is now a designer planter decorative IN&OUT item.

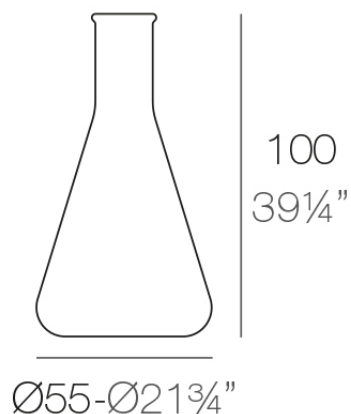


Info

Description

Made of polyethylene resin by rotational moulding. 100% Recyclable. Item suitable for indoor and outdoor use. Available in different finishes.

Weight: 2.5 Kg



ERLENMEYER Maceta 100

C = 4 L

ERLENMEYER Planter 100

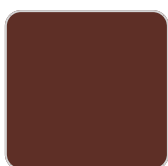
C = 1 gal

Finishes

finishes

BASIC

Ref. 49036A



purjai red



white



black



bronze



steel



anthracite



red



khaki



taupe



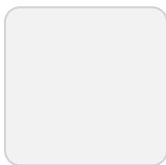
ecru



beige



orange



ice



notte blue



crema



green

Matt Polyethylene

LACQUERED

Ref. 49059F



modo green



purjai red



white



black



bronze



steel



anthracite



champany



red



khaki



taupe



ecru

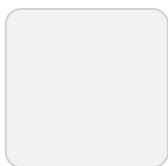


beige

Lacquered Polyethylene

lighting

WHITE LED
Ref. 49059W



ice

White internally lit unit with LED technology. Available only in matte ice white finish.

RGBW LED
Ref. 49059L



ice

Unit with internal lighting with RGBW LED technology and remote control unit for switching colors. Available only in matte ice white finish. Remote control included.

RGBW LED DMX

Ref. 49059D

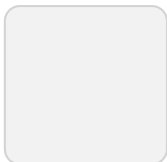


ice

Unit with internal lighting with RGBW LED technology and remote control unit for switching colors. Also controlled by DMX-1024 (wireless), enabling communication between one or more products simultaneously via the DMX transmitter (not included). There are two options to choose from: Professional XLR DMX and Home WIFI DMX. (Remote control included). Optional battery

RGBW LED BATTERY

Ref. 49059Y



ice

Unit with internal lighting with battery-powered RGBW LED technology. Includes charger and remote control for switching colors and charger. Available only in matte ice white finish.

RGBW LED DMX BATTERY

Ref. 49059DY



ice

Unit with internal lighting with RGBW LED technology and remote control unit for switching colors. Also controlled by DMX-1024 (wireless), enabling communication between one or more products simultaneously via the DMX transmitter (not included). There are two options to choose from: Professional XLR DMX and Home WIFI DMX. (Remote control included).

Ambients

