

Blow planter 40x40x40

by Stefano Giovannoni

Blow Collection, designed by Stefano Giovannoni for Vondom, comes from the willing to develop a **new family of in&out design products** in tune with the Pillow family but different in typology.

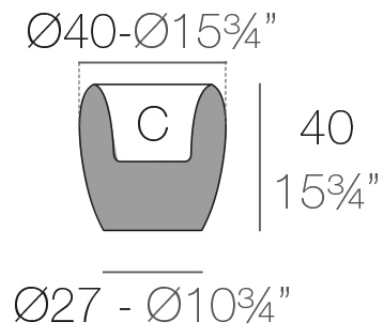


Info

Description

Pots made of polyethylene resin by rotational moulding. 100% Recyclable. Item suitable for indoor and outdoor use. Available in different finishes.

Weight: 3.5 Kg



BLOW Macetero 40 C = 10 L
BLOW Planter 40 C = 2 $\frac{3}{4}$ gal

Finishes

finishes

BASIC

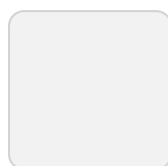
Ref. 55017A



purjai red



orange



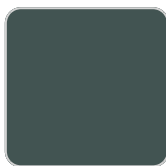
ice



notte blue



crema



green



white



black



bronze



steel



anthracite



red



khaki



taupe



ecru



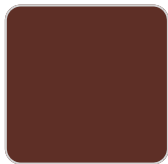
beige

Matt Polyethylene

SELF-WATERING

Ref. 55017R

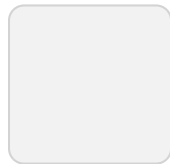
VONDOM



purjai red



orange



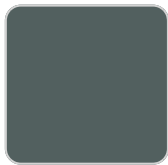
ice



notte blue



crema



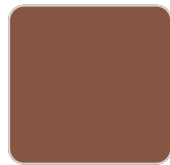
green



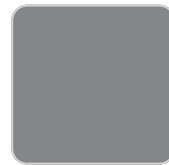
white



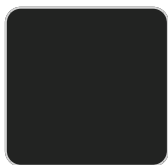
black



bronze



steel



anthracite



red



khaki



taupe



ecru



beige

Self-watering system included in all planters except those with basic finish

LACQUERED

Ref. 55017F



purjai red



white



black



bronze



steel



anthracite



red



khaki



taupe



ecru



beige



modo green



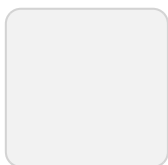
champany

Lacquered Polyethylene

lighting

WHITE LED

Ref. 55017W



ice

White internally lit unit with LED technology. Available only in matte ice white finish.

RGBW LED

Ref. 55017L



ice

Unit with internal lighting with RGBW LED technology and remote control unit for switching colors. Available only in matte ice white finish. Remote control included.

RGBW LED DMX

Ref. 55017D



ice

Unit with internal lighting with RGBW LED technology and remote control unit for switching colors. Also controlled by DMX-1024 (wireless), enabling communication between one or more products simultaneously via the DMX transmitter (not included). There are two options to choose from: Professional XLR DMX and Home WIFI DMX. (Remote control included). Optional battery

RGBW LED BATTERY

Ref. 55017Y

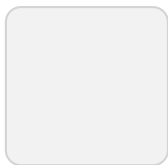


ice

Unit with internal lighting with battery-powered RGBW LED technology. Includes charger and remote control for switching colors and charger. Available only in matte ice white finish.

RGBW LED DMX BATTERY

Ref. 55017DY



ice

Unit with internal lighting with RGBW LED technology and remote control unit for switching colors. Also controlled by DMX-1024 (wireless), enabling communication between one or more products simultaneously via the DMX transmitter (not included). There are two options to choose from: Professional XLR

VONDOM

DMX and Home WIFI DMX. (Remote control included).

Blow planter 60x60x60

by Stefano Giovannoni

Blow Collection, designed by **Stefano Giovannoni** for Vondom, comes from the willing to develop a **new family of in&out design products** in tune with the Pillow family but different in typology.

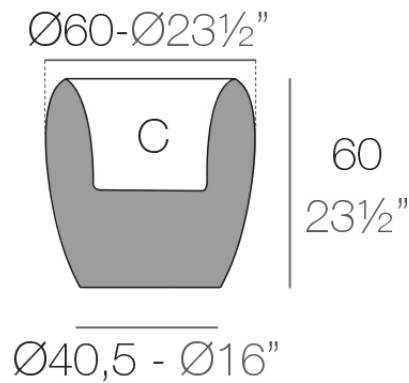


Info

Description

Pots made of polyethylene resin by rotational moulding. 100% Recyclable. Item suitable for indoor and outdoor use. Available in different finishes.

Weight: 10.02 Kg



BLOW Macetero 60

C = 28 L

BLOW Planter 60

C = 7½ gal

Finishes

finishes

BASIC

Ref. 55018A



purjai red



white



black



bronze



steel



anthracite



red



khaki



taupe



ecru



beige



ice



orange



notte blue



crema



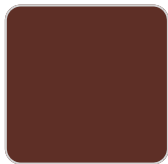
green

Matt Polyethylene

SELF-WATERING

Ref. 55018R

VONDOM



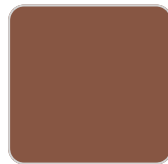
purjai red



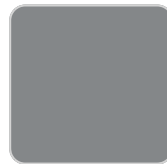
white



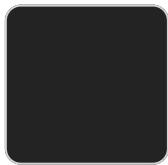
black



bronze



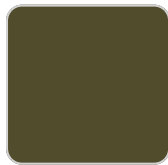
steel



anthracite



red



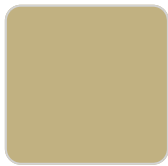
khaki



taupe



ecru



beige



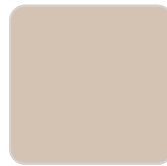
ice



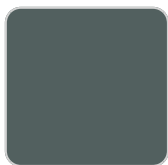
orange



notte blue



crema



green

Self-watering system included in all planters except those with basic finish

LACQUERED

Ref. 55018F



modo green



purjai red



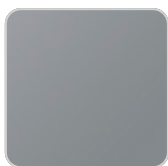
white



black



bronze



steel



anthracite



champany



red



khaki



taupe



ecru



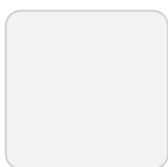
beige

Lacquered Polyethylene

lighting

WHITE LED

Ref. 55018W



ice

White internally lit unit with LED technology. Available only in matte ice white finish.

RGBW LED

Ref. 55018L



ice

Unit with internal lighting with RGBW LED technology and remote control unit for switching colors. Available only in matte ice white finish. Remote control included.

RGBW LED DMX

Ref. 55018D



ice

Unit with internal lighting with RGBW LED technology and remote control unit for switching colors. Also controlled by DMX-1024 (wireless), enabling communication between one or more products simultaneously via the DMX transmitter (not included). There are two options to choose from: Professional XLR DMX and Home WIFI DMX. (Remote control included). Optional battery

RGBW LED BATTERY

Ref. 55018Y

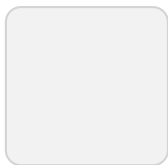


ice

Unit with internal lighting with battery-powered RGBW LED technology. Includes charger and remote control for switching colors and charger. Available only in matte ice white finish.

RGBW LED DMX BATTERY

Ref. 55018DY



ice

Unit with internal lighting with RGBW LED technology and remote control unit for switching colors. Also controlled by DMX-1024 (wireless), enabling communication between one or more products simultaneously via the DMX transmitter (not included). There are two options to choose from: Professional XLR

VONDOM

DMX and Home WIFI DMX. (Remote control included).

Blow planter 80x80x80

by Stefano Giovannoni

Blow Collection, designed by Stefano Giovannoni for Vondom, comes from the willing to develop a **new family of in&out design products** in tune with the Pillow family but different in typology.

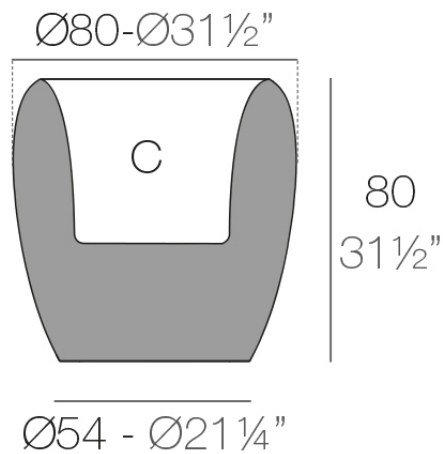


Info

Description

Pots made of polyethylene resin by rotational moulding. 100% Recyclable. Item suitable for indoor and outdoor use. Available in different finishes.

Weight: 20.08 Kg



BLOW Macetero 80
BLOW Planter 80

C = 68 L
C = 18 gal

Finishes

finishes

BASIC

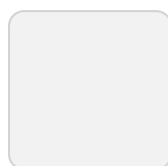
Ref. 55019A



purjai red



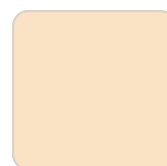
orange



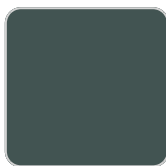
ice



notte blue



crema



green



white



black



bronze



steel



anthracite



red



khaki



taupe



ecru



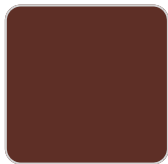
beige

Matt Polyethylene

SELF-WATERING

Ref. 55019R

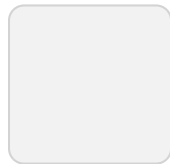
VONDOM



purjai red



orange



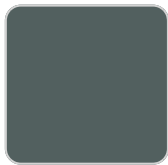
ice



notte blue



crema



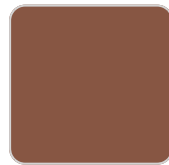
green



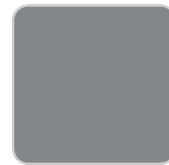
white



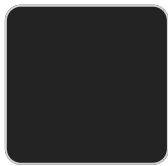
black



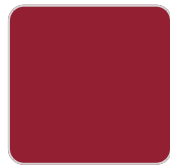
bronze



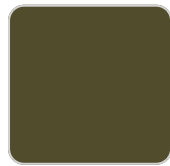
steel



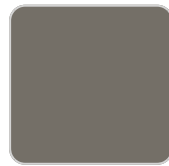
anthracite



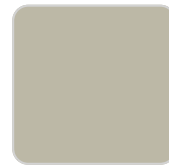
red



khaki



taupe



ecru



beige

Self-watering system included in all planters except those with basic finish

LACQUERED

Ref. 55019F



purjai red



white



black



bronze



steel



anthracite



red



khaki



taupe



ecru



beige



modo green



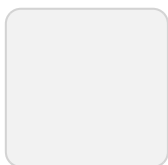
champany

Lacquered Polyethylene

lighting

WHITE LED

Ref. 55019W



ice

White internally lit unit with LED technology. Available only in matte ice white finish.

RGBW LED

Ref. 55019L



ice

Unit with internal lighting with RGBW LED technology and remote control unit for switching colors. Available only in matte ice white finish. Remote control included.

RGBW LED DMX

Ref. 55019D



ice

Unit with internal lighting with RGBW LED technology and remote control unit for switching colors. Also controlled by DMX-1024 (wireless), enabling communication between one or more products simultaneously via the DMX transmitter (not included). There are two options to choose from: Professional XLR DMX and Home WIFI DMX. (Remote control included). Optional battery

RGBW LED BATTERY

Ref. 55019Y

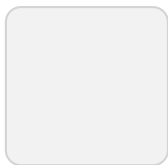


ice

Unit with internal lighting with battery-powered RGBW LED technology. Includes charger and remote control for switching colors and charger. Available only in matte ice white finish.

RGBW LED DMX BATTERY

Ref. 55019DY



ice

Unit with internal lighting with RGBW LED technology and remote control unit for switching colors. Also controlled by DMX-1024 (wireless), enabling communication between one or more products simultaneously via the DMX transmitter (not included). There are two options to choose from: Professional XLR

VONDOM

DMX and Home WIFI DMX. (Remote control included).

Blow planter 100x100x120

by Stefano Giovannoni

Blow Collection, designed by Stefano Giovannoni for Vondom, comes from the willing to develop a **new family of in&out design products** in tune with the Pillow family but different in typology.

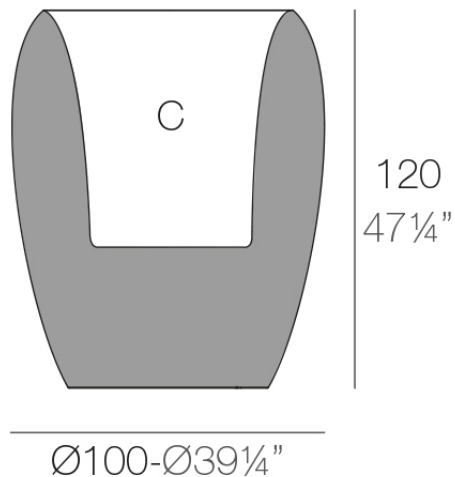


Info

Description

Pots made of polyethylene resin by rotational moulding. 100% Recyclable. Item suitable for indoor and outdoor use. Available in different finishes.

Weight: 38.08 Kg



BLOW Macetero 100x120
BLOW Planter 100x120

C = Ø78 x 55 cm
C = Ø30³/₄" x 21³/₄"

Finishes

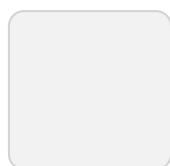
finishes

BASIC

Ref. 55020A



notte blue



ice



crema



green



purjai red



orange



white



black



bronze



steel



anthracite



red



khaki



taupe



ecru



beige

Matt Polyethylene

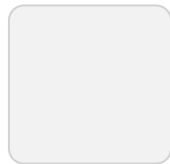
SELF-WATERING

Ref. 55020R

VONDOM



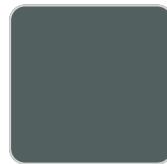
notte blue



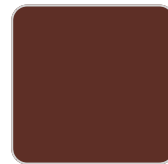
ice



crema



green



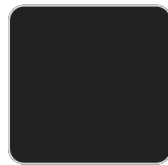
purjai red



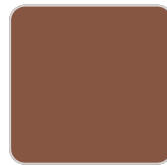
orange



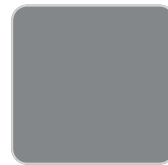
white



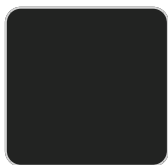
black



bronze



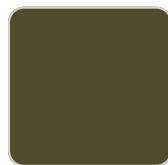
steel



anthracite



red



khaki



taupe



ecru



beige

Self-watering system included in all planters except those with basic finish

LACQUERED

Ref. 55020F



purjai red



white



black



bronze



steel



anthracite



red



khaki



taupe



ecru

VONDOM



beige



modo green



champany

Lacquered Polyethylene

lighting

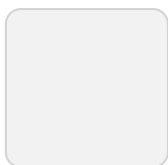
WHITE LED
Ref. 55020W



ice

White internally lit unit with LED technology. Available only in matte ice white finish.

RGBW LED
Ref. 55020L



ice

Unit with internal lighting with RGBW LED technology and remote control unit for switching colors. Available only in matte ice white finish. Remote control included.

RGBW LED DMX
Ref. 55020D



ice

Unit with internal lighting with RGBW LED technology and remote control unit for switching colors. Also controlled by DMX-1024 (wireless), enabling communication between one or more products simultaneously via the DMX transmitter (not included). There are two options to choose from: Professional XLR DMX and Home WIFI DMX. (Remote control included). Optional battery

RGBW LED BATTERY

Ref. 55020Y

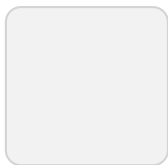


ice

Unit with internal lighting with battery-powered RGBW LED technology. Includes charger and remote control for switching colors and charger. Available only in matte ice white finish.

RGBW LED DMX BATTERY

Ref. 55020DY



ice

Unit with internal lighting with RGBW LED technology and remote control unit for switching colors. Also controlled by DMX-1024 (wireless), enabling communication between one or more products simultaneously via the DMX transmitter (not included). There are two options to choose from: Professional XLR

VONDOM

DMX and Home WIFI DMX. (Remote control included).

Ambients



Blow planter 100x100x75

by Stefano Giovannoni

Blow Collection, designed by Stefano Giovannoni for Vondom, comes from the willing to develop a **new family of in&out design products** in tune with the Pillow family but different in typology.

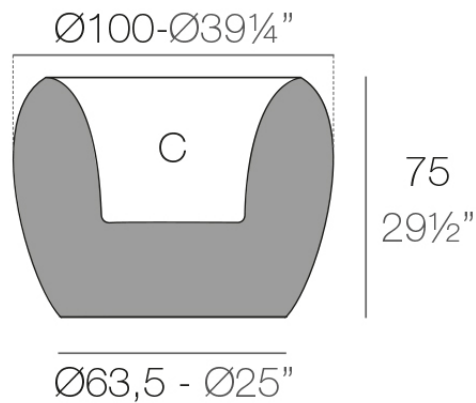


Info

Description

Pots made of polyethylene resin by rotational moulding. 100% Recyclable. Item suitable for indoor and outdoor use. Available in different finishes.

Weight: 25.08 Kg



BLOW Macetero 100x75
BLOW Planter 100x75

C = 104 L
C = 27½ gal

Finishes

finishes

BASIC

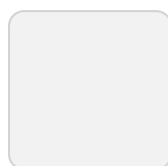
Ref. 55021A



purjai red



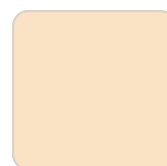
orange



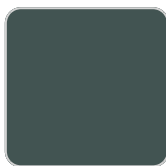
ice



notte blue



crema



green



white



black



bronze



steel



anthracite



red



khaki



taupe



ecru



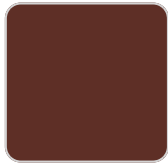
beige

Matt Polyethylene

SELF-WATERING

Ref. 55021R

VONDOM



purjai red



orange



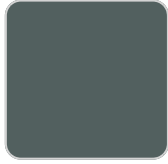
ice



notte blue



crema



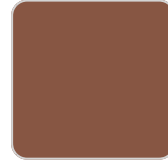
green



white



black



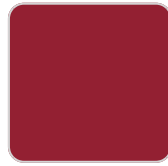
bronze



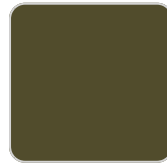
steel



anthracite



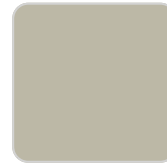
red



khaki



taupe



ecru



beige

Self-watering system included in all planters except those with basic finish

LACQUERED

Ref. 55021F



purjai red



white



black



bronze



steel



anthracite



red



khaki



taupe



ecru



beige



modo green



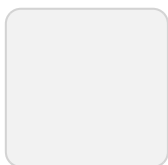
champany

Lacquered Polyethylene

lighting

WHITE LED

Ref. 55021W



ice

White internally lit unit with LED technology. Available only in matte ice white finish.

RGBW LED

Ref. 55021L



ice

Unit with internal lighting with RGBW LED technology and remote control unit for switching colors. Available only in matte ice white finish. Remote control included.

RGBW LED DMX

Ref. 55021D



ice

Unit with internal lighting with RGBW LED technology and remote control unit for switching colors. Also controlled by DMX-1024 (wireless), enabling communication between one or more products simultaneously via the DMX transmitter (not included). There are two options to choose from: Professional XLR DMX and Home WIFI DMX. (Remote control included). Optional battery

RGBW LED BATTERY

Ref. 55021Y

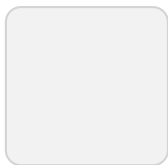


ice

Unit with internal lighting with battery-powered RGBW LED technology. Includes charger and remote control for switching colors and charger. Available only in matte ice white finish.

RGBW LED DMX BATTERY

Ref. 55021DY



ice

Unit with internal lighting with RGBW LED technology and remote control unit for switching colors. Also controlled by DMX-1024 (wireless), enabling communication between one or more products simultaneously via the DMX transmitter (not included). There are two options to choose from: Professional XLR

VONDOM

DMX and Home WIFI DMX. (Remote control included).

Ambients

