

ocean master MAX single cantilever

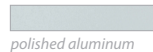
premium parasols

The Ocean Master MAX Single Cantilever is simply art and engineering harmonizing in a symphony of shade. The polished and anodized marine-grade canopy structure cantilevers from a sturdy, oval-shaped mast inspired by sailing yachts. With the combined features of an ultra strong aluminum milled fulcrum and automatic telescoping mast, the shade canopy easily closes over tables and chairs.



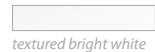
finish options

standard



polished aluminum

powder coat



textured bright white



sea shell white



espresso



ash grey



hammered bronze



jet black

shapes & sizes



square

ft. / m.
*8.0' / 2.45
*/++10.0' / 3.0
+++12.0' / 3.65
+++13.0' / 4.0



octagon

ft. / m.
*9.0' / 2.75
*/++11.0' / 3.4
+++13.0' / 4.0



rectangle

ft. / m.
*8' x 12' / 2.45 x 3.65
+++10' x 14' / 3.0 x 4.25

options



high-wind stabilizers

**optional high-wind stabilizers
+++includes high-wind stabilizers



MAX acorn

final options



features:

- a. Patented Independent Bracket Hub System
- b. Telescoping Mast with "Easy Drive" Crank Lift System
- c. Marine Grade Aluminum Components
- d. Cantilever Stem Cover Plate
- e. V-MAX Reinforced Strut Design
- f. Ballistic Reinforced/Screw Pocket Construction
- g. Reinforced Strut Joints Connector
- h. Cam Lock Lever – Allows 360° Rotation
- i. Easily Replaceable Parts

global headquarters

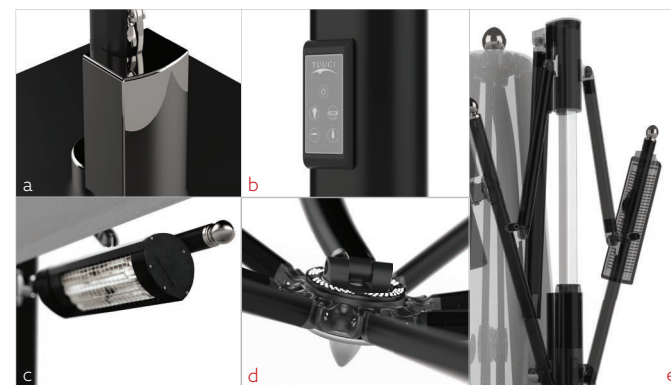
2900 NW 35th Street, Miami, FL 33142 USA | 305.634.5116 | info@tuuci.com

european office

Nedervonder 17, 5061 JP Olstenwijk, The Netherlands | +31.13.522.0471 | info@tuuci.eu

AUTOMATED SINGLE AND DUAL MAX CANTILEVER

TUUCI's Automated Single and Dual MAX Cantilever shade platforms redefine shade technology. Automation and shade integrate seamlessly with our convenient and intuitive push-button interface. Shading, lighting, and heating come alive at your fingertips with a one-touch control panel featuring smart safety protocols. A whole new level of intelligent design has been reached.



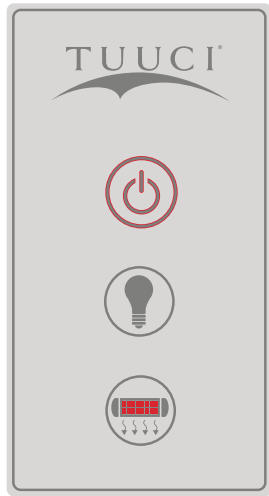
Features:

- a. Control Box
- b. Push Button Control Makes It Easy To:
 - Open and Close the Canopy*
 - Turn On and Off the Luna LED Light*
 - Power Two Energy-Efficient Heaters*
- c. Energy-Efficient Infrared Radiant Heaters
- d. Luna LED Light Provides State-of-the Art Ambient Lighting
- e. Telescoping Mast Provides Ample Tabletop Clearance

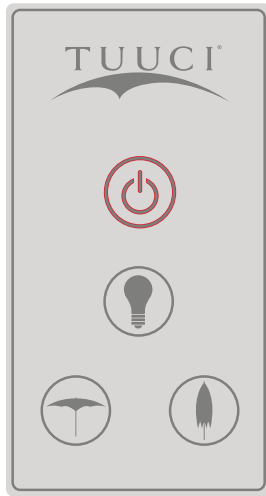
for more information visit tuuci.com

CONFIGURATION OPTIONS

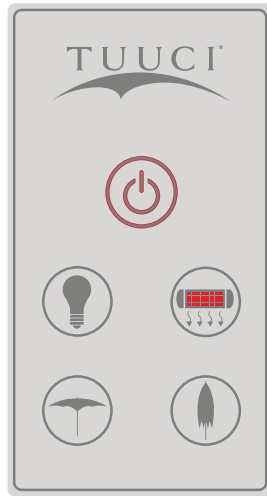
Automation to suit your individual needs. Choose from three pre-set configuration options available for both the Single and Dual MAX Cantilever.



LIGHT AND HEATERS



LIGHT AND AUTOMATION



LIGHT, HEATERS AND
AUTOMATION

SHAPES & SIZES

SINGLE CANTILEVER



Octagon

ft.	/	m.
9.0'	/	2.75
11.0'	/	3.4
13.0'	/	4.0



Square

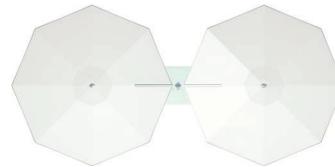
ft.	/	m.
8.0'	/	2.45
10.0'	/	3.0
12.0'	/	3.65
13.0'	/	4.0



Rectangle

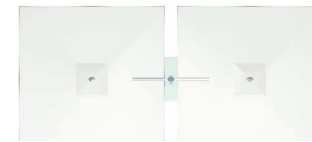
ft.	/	m.
8' x 12'	/	2.45 x 3.65
10' x 14'	/	3.0 x 4.25

DUAL CANTILEVER



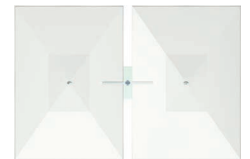
Dual - Octagon

ft.	/	m.
9.0' x 18.0'	/	2.75 x 5.4
11.0' x 22.0'	/	3.4 x 6.8
13.0' x 26.0'	/	4.0 x 8.0



Dual - Square

ft.	/	m.
8.0' x 16.0'	/	2.4 x 4.9
10.0' x 20.0'	/	3.0 x 6.0
12.0' x 24.0'	/	3.65 x 7.4
13' x 26.0	/	4.0 x 7.9



Dual - Rectangle

ft.	/	m.
16' x 12'	/	4.9 x 3.65
20' x 14'	/	6.0 x 4.25

FINISH OPTIONS

ALUMA-TEAK™



natural



java

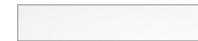


weathered



aspen white

POWDER-COAT



textured bright white



sea shell white



ash grey



jet black



espresso



hammered bronze