

outdoor

Talo outdoor

Hexagonal coffee / centro hexagonal

Altherr Désile Park, 2022

C709

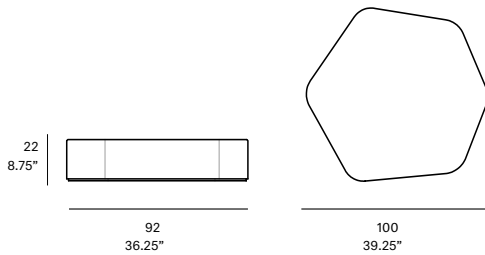
UHPC concrete base made up of natural mineral components and organic fibers (non-metallic), which ensure exceptional resistance to weathering. Optional clear tempered glass top.



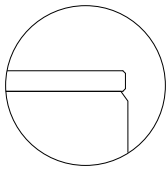
Estructura de cemento UHPC compuesto por una mezcla de componentes minerales naturales y fibras orgánicas (no metálicas) que aseguran una excepcional resistencia a la intemperie. Tapa opcional de cristal templado transparente.

Shipment details

Qty	1 coffee table (1 box)
Volume	0,45 m ³ / 15 ft ³
Without glass Top option	
Gross weight	LQ kg / 108 lb
Net weight	KL kg / 75 lb
With glass Top option	
Gross weight	62 kg / 163.7 lb
Net weight	48 kg / 105.8 lb
Item dimensions (width x depth x height)	92 x 100 x 22 cm 36.25" x 39.25" x 8.75"



Optional tabletop:



- tempered glass top 8 mm/0.31" thick.

expormim

Expormim S.A.
Pol. Ind. Jaime I
46640 Moixent (Valencia) Spain
+34 962 295 144/5
export@expormim.com
www.expormim.com

Expormim USA LLC
(212) 204-8572
usa@expormim.com
www.expormim.com

1/2

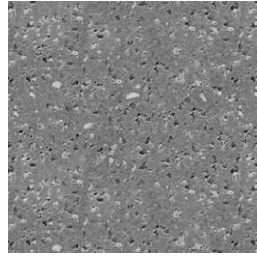
outdoor

concrete base

UHPC concrete



C1 stone



C2 slate



C3 terracotta

outdoor

Talo outdoor

Hexagonal coffee / centro hexagonal

Altherr Désile Park, 2022

C708



UHPC concrete base made up of natural mineral components and organic fibers (non-metallic), which ensure exceptional resistance to weathering. Optional clear tempered glass top.

Estructura de cemento UHPC compuesto por una mezcla de componentes minerales naturales y fibras orgánicas (no metálicas) que aseguran una excepcional resistencia a la intemperie. Tapa opcional de cristal templado transparente.

Shipment details

Qty 1 coffee table (1 box)
Volume 0,10 m³ / 21.2 ft³

Without glass Top option

Gross weight 22 kg / 48.5 lb
Net weight 14 kg / 30.9 lb

With glass Top option

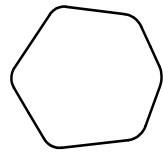
Gross weight 25 kg / 55.1 lb
Net weight 17 kg / 37.5 lb

Item dimensions 46 x 51 x 29 cm
(width x depth x height) 18" x 20" x 11.5"

29
11.5"

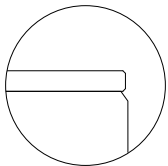


46
18"



51
20"

Optional tabletop:



- tempered glass top 6 mm/0.24" thick.

expormim

Expormim S.A.
Pol. Ind. Jaime I
46640 Moixent (Valencia) Spain
+34 962 295 144/5
export@expormim.com
www.expormim.com

Expormim USA LLC
(212) 204-8572
usa@expormim.com
www.expormim.com

1/2

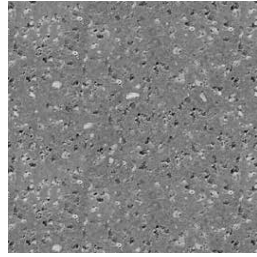
outdoor

concrete base

UHPC concrete



C1 stone



C2 slate



C3 terracotta

outdoor

Talo outdoor

Hexagonal side table / centro rincón hexagonal

Altherr Désile Park, 2022

C710



UHPC concrete base made up of natural mineral components and organic fibers (non-metallic), which ensure exceptional resistance to weathering. Optional clear tempered glass top.

Estructura de cemento UHPC compuesto por una mezcla de componentes minerales naturales y fibras orgánicas (no metálicas) que aseguran una excepcional resistencia a la intemperie. Tapa opcional de cristal templado transparente.

Shipment details

Qty	1 coffee table (1 box)
Volume	0,09 m ³ / 3.2 ft ³

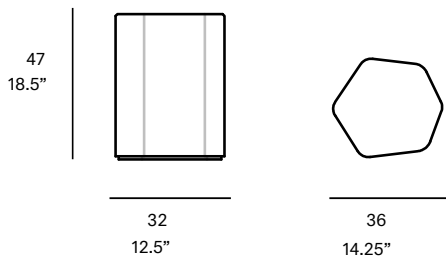
Without glass Top option

Gross weight	20 kg / 44.1 lb
Net weight	12 kg / 26.5 lb

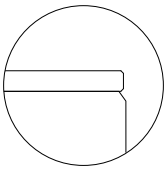
With glass Top option

Gross weight	22 kg / 48.5 lb
Net weight	14 kg / 30.9 lb

Item dimensions (width x depth x height)	32 x 36 x 47 cm 12.5" x 14.25" x 18.5"
---	---



Optional tabletop:



- tempered glass top 6 mm/0.24" thick.

expormim

Expormim S.A.
Pol. Ind. Jaime I
46640 Moixent (Valencia) Spain
+34 962 295 144/5
.....
www.expormim.com

Expormim USA LLC
(212) 204-8572
usa@expormim.com
www.expormim.com

1/2

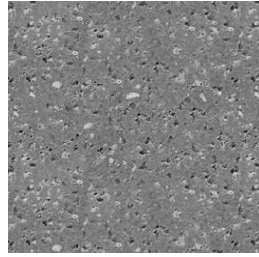
outdoor

concrete base

UHPC concrete



C1 stone



C2 slate



C3 terracotta