

outdoor

Talo outdoor

Square dining table / mesa cuadrada

Altherr Désile Park, 2022

C701 C 120



Dining table with UHPC concrete base made up of natural mineral components and organic fibers (non-metallic), which ensure exceptional resistance to weathering. Tabletop options: HPL Trespa® 13 mm/0.51" thick, FENIX NTM® 12 mm/0.47" thick and Dekton® 8 mm/0.31" thick. Delivered unassembled.

Mesa de comedor con estructura de hormigón UHPC compuesto por una mezcla de componentes minerales naturales y fibras orgánicas (no metálicas) que aseguran una excepcional resistencia a la intemperie. Opciones de tablero: HPL Trespa® de 13 mm, FENIX NTM® de 12 mm y Dekton® de 12 mm. Se sirven desmontadas.

Shipment details

Qty 1 dining table (2 boxes)
Volume 0,40 m³ / 14.1 ft³

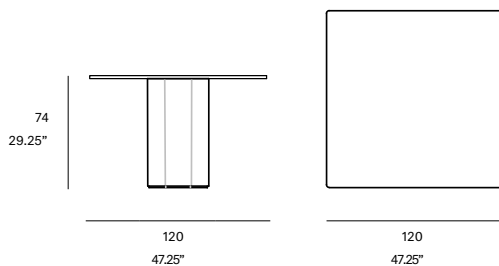
HPL Top option
Gross weight 119 kg / 308.6 lb
Net weight 87 kg / 227.1 lb

FENIX NTM® Top option
Gross weight 119 kg / 308.6 lb
Net weight 87 kg / 227.1 lb

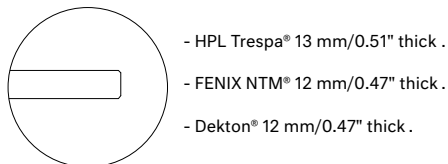
Dekton® Top option
Gross weight 133 kg / 659.2 lb
Net weight 100 kg / 500.4 lb

Item dimensions (width x depth x height) 120 x 120 x 74 cm
47.25" x 47.25" x 29.25"

HEAVY FURNITURE



Tabletop options:



expormim

Expormim S.A.
Pol. Ind. Jaime I
46640 Moixent (Valencia) Spain
+34 962 295 144/5
export@expormim.com
www.expormim.com

Expormim USA LLC
(212) 204-8572
usa@expormim.com
www.expormim.com

1/3

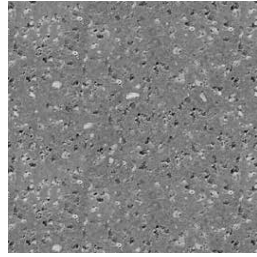
outdoor

frame / estructura

UHPC concrete



C1 stone



C2 slate



C3 terracotta

outdoor

top / tapa

HPL Trespa® - premium



320 silver quartzite - matt



323 natural chalkstone - matt



327 titanium bronze - satin



321 italian slate - matt

FENIX NTM®



029 bianco male



720 nero ingo

Dekton® - kraftizen



K1 albarium



K2 argentium



K3 umber



K4 micron

Dekton® - natural



D3 danae



D2 kelya

expormim

Expormim S.A.
Pol. Ind. Jaime I
46640 Moixent (Valencia) Spain
+34 962 295 144/5
export@expormim.com
www.expormim.com

Expormim USA LLC
(212) 204-8572
usa@expormim.com
www.expormim.com

3/3

outdoor

Talo outdoor Round dining table / mesa redonda

Altherr Désile Park, 2022

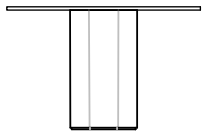
C702 R 120



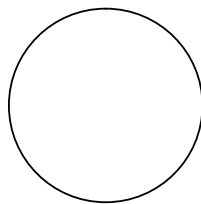
Dining table with UHPC concrete base made up of natural mineral components and organic fibers (non-metallic), which ensure exceptional resistance to weathering. Tabletop options: HPL Trespa® 13 mm/0.51" thick, FENIX NTM® 12 mm/0.47" thick and Dekton® 8 mm/0.31" thick. Delivered unassembled.

Mesa de comedor con estructura de hormigón UHPC compuesto por una mezcla de componentes minerales naturales y fibras orgánicas (no metálicas) que aseguran una excepcional resistencia a la intemperie. Opciones de tablero: HPL Trespa® de 13 mm, FENIX NTM® de 12 mm y Dekton® de 12 mm. Se sirven desmontadas.

74
29.25"

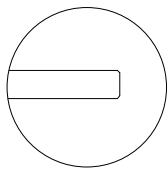


120
47.25"



120
47.25"

Tabletop options:



- HPL Trespa® 13 mm/0.51" thick .
- FENIX NTM® 12 mm/0.47" thick .
- Dekton® 12 mm/0.47" thick .

Shipment details

Qty 1 dining table (2 boxes)
Volume 0,52 m³ / 18.4 ft³

HPL Top option
Gross weight 119 kg / 308.6 lb
Net weight 87 kg / 227.1 lb

FENIX NTM® Top option
Gross weight 119 kg / 308.6 lb
Net weight 87 kg / 227.1 lb

Dekton® Top option
Gross weight 133 kg / 659.2 lb
Net weight 100 kg / 500.4 lb

Item dimensions (width x depth x height) 120 x 120 x 74 cm
47.25" x 47.25" x 29.25"

HEAVY FURNITURE

expormim

Expormim S.A.
Pol. Ind. Jaime I
46640 Moixent (Valencia) Spain
+34 962 295 144/5
.....
www.expormim.com

Expormim USA LLC
(212) 204-8572
usa@expormim.com
www.expormim.com

1/3

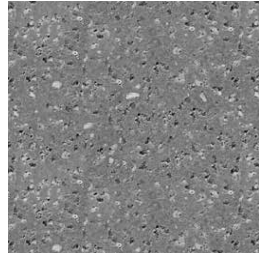
outdoor

frame / estructura

UHPC concrete



C1 stone



C2 slate



C3 terracotta

outdoor

top / tapa

HPL Trespa® - premium



320 silver quartzite - matt



323 natural chalkstone - matt



327 titanium bronze - satin



321 italian slate - matt

FENIX NTM®



029 bianco male



720 nero ingo

Dekton® - kraftizen



K1 albarium



K2 argentium



K3 umber



K4 micron

Dekton® - natural



D3 danae



D2 kelya

expormim

Expormim S.A.
Pol. Ind. Jaime I
46640 Moixent (Valencia) Spain
+34 962 295 144/5
.....
www.expormim.com

Expormim USA LLC
(212) 204-8572
usa@expormim.com
www.expormim.com

3/3

outdoor

Talo outdoor Round dining table / mesa redonda

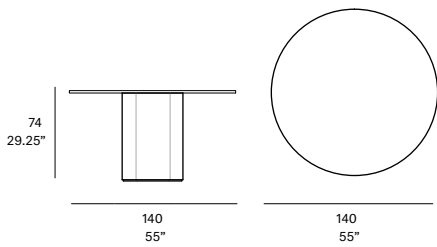
Altherr Désile Park, 2022

C702 C 140

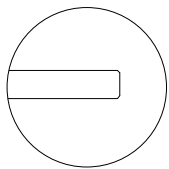


Dining table with ' / " * / ; : / > 1 @ . - ? 1 9 - 0 1 A < ; 2 : - @ > 8
9 5 1 > 8 / ; 9 < ; : 1 : @ - : 0 ; > 3 - : 5 2 1 ? : ; : 9 1 @ 8 5 C 4 5 4
1 : ? A > 1 D / 1 < 6 : - 8 > 1 ? 5 @ : / 1 @ C 1 - @ 1 > 5 3 & - . 8 @ < ; < 6 : ?
/ " ! & > 1 ? < - 1 K 9 9 H M @ 4 5 7 ~ , z ff z & Z I J 9 9 H L O @ 4 5 7
- : 0 " 1 7 @ : P 9 9 H K I @ 4 5 7 ~ 1 8 3 1 > 1 0 A : - ? ? 1 9 . 8 0

Mesa de comedor con e ? @ A / @ > 0 1 4 ; > 9 3 : : ' / " *
/ ; 9 < A 1 ? @ < ; > A : - 9 1 F / 8 0 1 / ; 9 < ; : 1 : @ ? 9 5 1 > 8 ?
: - @ > 8 ? E 2 > ? ; > 3 A : 5 - ? : ; 9 1 @ 8 5 - ? = A 1 = A 1 - ? 1 3 A > :
A : - 1 D / 1 < / 5 : - 8 > 1 ? 5 @ : / 5 - 8 5 @ 9 < 1 > 5 ! < / 5 : 1 ? 0 1
@ . 8 > / " ! & > 1 ? < - 0 1 I K 9 9 ~ , z ff z & Z 0 1 I J 9 9 E
" 1 7 @ : 0 1 I J 9 9 % 1 ? 5 B 1 : 0 1 ? 9 ; : @ 0 - ?



Tabletop options:



- HPL Trespa® 13 mm/0.51" thick.
- FENIX NTM® 12 mm/0.47" thick.
- Dekton® 12 mm/0.47" thick.

Shipment details

Qty 1 dining table (2 boxes)
Volume 0,52 m³ / 18.4 ft³

HPL Top option
Gross weight 152 kg / 335.1 lb
Net weight 111 kg / 244 lb

FENIX NTM® Top option
Gross weight 152 kg / 335.1 lb
Net weight 111 kg / 244 lb

Dekton® Top option
Gross weight 171 kg / 377 lb
Net weight 129 kg / 284.4 lb

Item dimensions 140 x 140 x 74 cm
(width x depth x height) 55" x 55" x 29.25"

HEAVY FURNITURE

expormim

Expormim S.A.
Pol. Ind. Jaime I
46640 Moixent (Valencia) Spain
+34 962 295 144/5
export@expormim.com
www.expormim.com

Expormim USA LLC
(212) 204-8572
usa@expormim.com
www.expormim.com

1/3

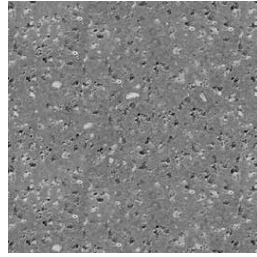
outdoor

frame / estructura

UHPC concrete



C1 stone



C2 slate



C3 terracotta

outdoor

top / tapa

HPL Trespa® - premium



320 silver quartzite - matt



323 natural chalkstone - matt



327 titanium bronze - satin



321 italian slate - matt

FENIX NTM®



029 bianco male



720 nero ingo

Dekton® - kraftizen



K1 albarium



K2 argentium



K3 umber



K4 micron

Dekton® - natural



D3 danae



D2 kelya

expormim

Expormim S.A.
Pol. Ind. Jaime I
46640 Moixent (Valencia) Spain
+34 962 295 144/5
export@expormim.com
www.expormim.com

Expormim USA LLC
(212) 204-8572
usa@expormim.com
www.expormim.com

3/3

outdoor

Talo outdoor

Hexagonal dining table / mesa hexagonal

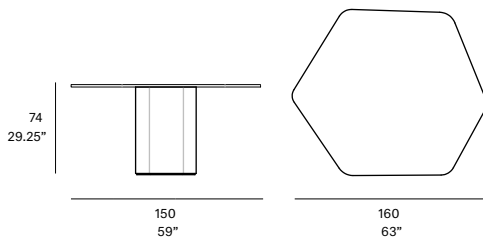
Altherr Désile Park, 2022

C702 H 160

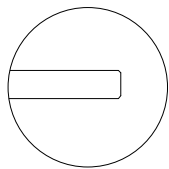


Dining table with UHPC concrete base made up of natural mineral components and organic fibers (non-metallic), which ensure exceptional resistance to weathering. Tabletop options: HPL Trespa® 13 mm/0.51" thick, FENIX NTM® 12 mm/0.47" thick and Dekton® 8 mm/0.31" thick. Delivered unassembled.

Mesa de comedor con estructura de hormigón UHPC compuesto por una mezcla de componentes minerales naturales y fibras orgánicas (no metálicas) que aseguran una excepcional resistencia a la intemperie. Opciones de tablero: HPL Trespa® de 13 mm, FENIX NTM® de 12 mm y Dekton® de 12 mm. Se sirven desmontadas.



Tabletop options:



- HPL Trespa® 13 mm/0.51" thick.
- FENIX NTM® 12 mm/0.47" thick.
- Dekton® 12 mm/0.47" thick.

Shipment details

Qty 1 dining table (2 boxes)
Volume 0,60 m³ / 21.2 ft³

HPL Top option
Gross weight 148 kg / 326.3 lb
Net weight 108 kg / 238.1 lb

FENIX NTM® Top option
Gross weight 148 kg / 326.3 lb
Net weight 108 kg / 238.1 lb

Dekton® Top option
Gross weight 165 kg / 363.8 lb
Net weight 125 kg / 275.6 lb

Item dimensions 160 x 150 x 74 cm
(width x depth x height) 63" x 59" x 29.25"

HEAVY FURNITURE

expormim

Expormim S.A.
Pol. Ind. Jaime I
46640 Moixent (Valencia) Spain
+34 962 295 144/5
export@expormim.com
www.expormim.com

Expormim USA LLC
(212) 204-8572
usa@expormim.com
www.expormim.com

1/3

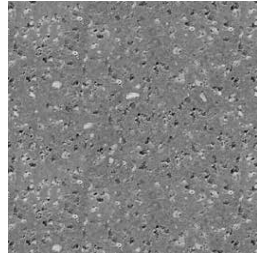
outdoor

frame / estructura

UHPC concrete



C1 stone



C2 slate



C3 terracotta

outdoor

top / tapa

HPL Trespa® - premium



320 silver quartzite - matt



323 natural chalkstone - matt



327 titanium bronze - satin



321 italian slate - matt

FENIX NTM®



029 bianco male



720 nero ingo

Dekton® - kraftizen



K1 albarium



K2 argentium



K3 umber

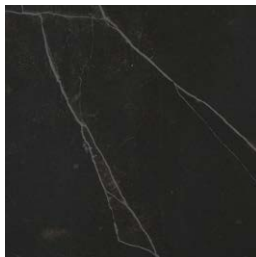


K4 micron

Dekton® - natural



D3 danae



D2 kelya

expormim

Expormim S.A.
Pol. Ind. Jaime I
46640 Moixent (Valencia) Spain
+34 962 295 144/5
export@expormim.com
www.expormim.com

Expormim USA LLC
(212) 204-8572
usa@expormim.com
www.expormim.com

3/3

outdoor

Talo outdoor

Round dining table / mesa redonda

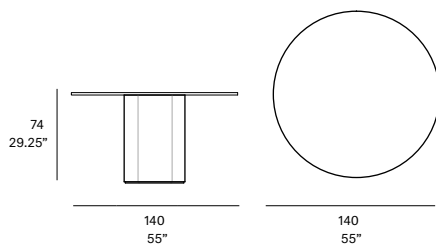
Altherr Désile Park, 2022

C702 R 140

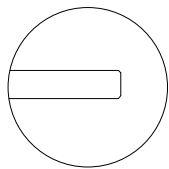


Dining table with UHPC concrete base made up of natural mineral components and organic fibers (non-metallic), which ensure exceptional resistance to weathering. Tabletop options: HPL Trespa® 13 mm/0.51" thick, FENIX NTM® 12 mm/0.47" thick and Dekton® 8 mm/0.31" thick. Delivered unassembled.

Mesa de comedor con estructura de hormigón UHPC compuesto por una mezcla de componentes minerales naturales y fibras orgánicas (no metálicas) que aseguran una excepcional resistencia a la intemperie. Opciones de tablero: HPL Trespa® de 13 mm, FENIX NTM® de 12 mm y Dekton® de 12 mm. Se sirven desmontadas.



Tabletop options:



- HPL Trespa® 13 mm/0.51" thick.
- FENIX NTM® 12 mm/0.47" thick.
- Dekton® 12 mm/0.47" thick.

Shipment details

Qty 1 dining table (2 boxes)
Volume 0,52 m³ / 18.4 ft³

HPL Top option
Gross weight 140 kg / 308.6 lb
Net weight 103 kg / 227.1 lb

FENIX NTM® Top option
Gross weight 140 kg / 308.6 lb
Net weight 103 kg / 227.1 lb

Dekton® Top option
Gross weight 154 kg / 339.5 lb
Net weight 117 kg / 257.9 lb

Item dimensions (width x depth x height) 140 x 140 x 74 cm
55" x 55" x 29.25"

HEAVY FURNITURE

expormim

Expormim S.A.
Pol. Ind. Jaime I
46640 Moixent (Valencia) Spain
+34 962 295 144/5
export@expormim.com
www.expormim.com

Expormim USA LLC
(212) 204-8572
usa@expormim.com
www.expormim.com

1/3

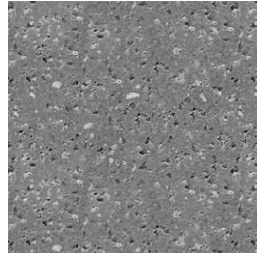
outdoor

frame / estructura

UHPC concrete



C1 stone



C2 slate



C3 terracotta

outdoor

top / tapa

HPL Trespa® - premium



320 silver quartzite - matt



323 natural chalkstone - matt



327 titanium bronze - satin



321 italian slate - matt

FENIX NTM®



029 bianco male



720 nero ingo

Dekton® - kraftizen



K1 albarium



K2 argentium



K3 umber



K4 micron

Dekton® - natural



D3 danae



D2 kelya

expormim

Expormim S.A.
Pol. Ind. Jaime I
46640 Moixent (Valencia) Spain
+34 962 295 144/5
export@expormim.com
www.expormim.com

Expormim USA LLC
(212) 204-8572
usa@expormim.com
www.expormim.com

3/3

outdoor

Talo outdoor

Round dining table / mesa redonda

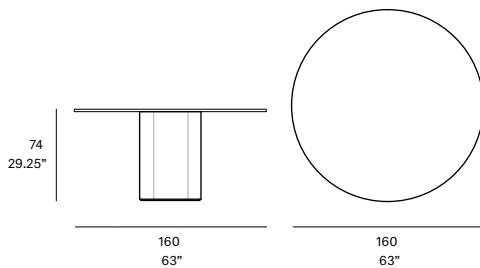
Altherr Désile Park, 2022

C702 R 160



Dining table with UHPC concrete base made up of natural mineral components and organic fibers (non-metallic), which ensure exceptional resistance to weathering. Tabletop options: HPL Trespa® 13 mm/0.51" thick and FENIX NTM® 12 mm/0.47" thick. Delivered unassembled.

Mesa de comedor con estructura de hormigón UHPC compuesto por una mezcla de componentes minerales naturales y fibras orgánicas (no metálicas) que aseguran una excepcional resistencia a la intemperie. Opciones de tablero: HPL Trespa® de 13 mm y FENIX NTM® de 12 mm. Se sirven desmontadas.



Shipment details

Qty	1 dining table (2 boxes)
Volume	0,60 m ³ / 21.2 ft ³

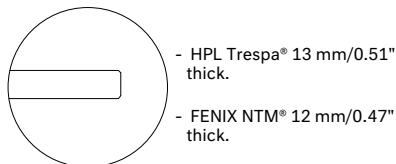
HPL /FENIX Top option

Gross weight	155 kg / 341.7 lb
Net weight	112 kg /246.9 lb

Item dimensions (width x depth x height)	160 x 160 x 74 cm 63" x 63" x 29.25"
---	---

HEAVY FURNITURE

Tabletop options:



expormim

Expormim S.A.
Pol. Ind. Jaime I
46640 Moixent (Valencia) Spain
+34 962 295 144/5
export@expormim.com
www.expormim.com

Expormim USA LLC
(212) 204-8572
usa@expormim.com
www.expormim.com

1/3

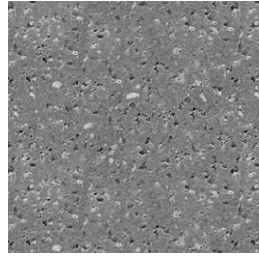
outdoor

frame / estructura

UHPC concrete



C1 stone



C2 slate



C3 terracotta

top / tapa

HPL Trespa® - premium



320 silver quartzite - matt



323 natural chalkstone - matt

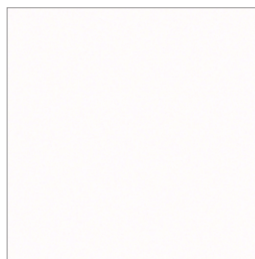


327 titanium bronze - satin



321 italian slate - matt

FENIX NTM®



029 bianco male



720 nero ingo

outdoor

Talo outdoor

Rectangular dining table / mesa rectangular

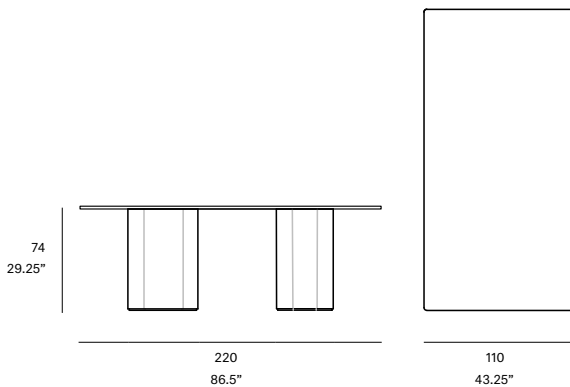
Altherr Désile Park, 2022

C700 220

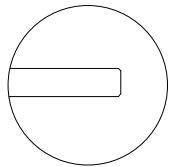


Dining table with UHPC concrete base made up of natural mineral components and organic fibers (non-metallic), which ensure exceptional resistance to weathering. Tabletop options: HPL Trespa® 13 mm/0.51" thick, FENIX NTM® 12 mm/0.47" thick and Dekton® 12 mm/0.47" thick. Delivered unassembled.

Mesa de comedor con estructura de hormigón UHPC compuesto por una mezcla de componentes minerales naturales y fibras orgánicas (no metálicas) que aseguran una excepcional resistencia a la intemperie. Opciones de tablero: HPL Trespa® de 13 mm, FENIX NTM® de 12 mm y Dekton® de 12 mm. Se sirven desmontadas.



Tabletop options:



- HPL Trespa® 13 mm/0.51" thick.
- FENIX NTM® 12 mm/0.47" thick.
- Dekton® 12 mm/0.47" thick.

Shipment details

Qty 1 dining table (2 boxes)
Volume 0,90 m³ / 27.5 ft³

HPL Top option
Gross weight 240 kg / 529 lb
Net weight 178 kg / 392.4 lb

FENIX NTM® Top option
Gross weight 240 kg / 529 lb
Net weight 178 kg / 392.4 lb

Dekton® Top option
Gross weight 263 kg / 579.8 lb
Net weight 202 kg / 445 lb

Item dimensions
(width x depth x height) 220 x 110 x 74 cm
86.5" x 43.25" x 29.25"

HEAVY FURNITURE

expormim

Expormim S.A.
Pol. Ind. Jaime I
46640 Moixent (Valencia) Spain
+34 962 295 144/5
export@expormim.com
www.expormim.com

Expormim USA LLC
(212) 204-8572
usa@expormim.com
www.expormim.com

1/3

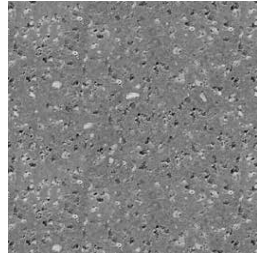
outdoor

frame / estructura

UHPC concrete



C1 stone



C2 slate



C3 terracotta

outdoor

top / tapa

HPL Trespa® - premium



320 silver quartzite - matt



323 natural chalkstone - matt



327 titanium bronze - satin



321 italian slate - matt

FENIX NTM®



029 bianco male



720 nero ingo

Dekton® - kraftizen



K1 albarium



K2 argentium



K3 umber

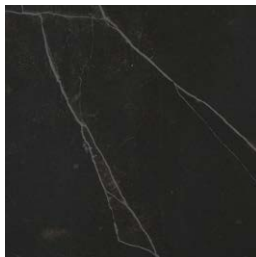


K4 micron

Dekton® - natural



D3 danae



D2 kelya

expormim

Expormim S.A.
Pol. Ind. Jaime I
46640 Moixent (Valencia) Spain
+34 962 295 144/5
export@expormim.com
www.expormim.com

Expormim USA LLC
(212) 204-8572
usa@expormim.com
www.expormim.com

3/3

outdoor

Talo outdoor

Rectangular dining table / mesa rectangular

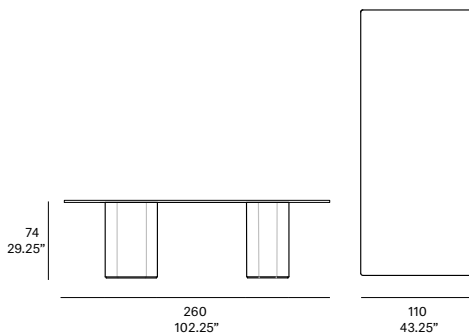
Altherr Désile Park, 2022

C700 260



Dining table with UHPC concrete base made up of natural mineral components and organic fibers (non-metallic), which ensure exceptional resistance to weathering. Tabletop options: HPL Trespa® 13 mm/0.51" thick, FENIX NTM® 12 mm/0.47" thick and Dekton® 12 mm/0.47" thick. Delivered unassembled.

Mesa de comedor con estructura de hormigón UHPC compuesto por una mezcla de componentes minerales naturales y fibras orgánicas (no metálicas) que aseguran una excepcional resistencia a la intemperie. Opciones de tablero: HPL Trespa® de 13 mm, FENIX NTM® de 12 mm y Dekton® de 12 mm. Se sirven desmontadas.



Shipment details

Qty 1 dining table (2 boxes)
Volume 0,84 m³ / 29.7 ft³

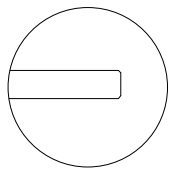
HPL Top option
Gross weight 254 kg / 560 lb
Net weight 187 kg / 412.3 lb

FENIX NTM® Top option
Gross weight 254 kg / 560 lb
Net weight 187 kg / 412.3 lb

Dekton® Top option
Gross weight 281 kg / 619.5 lb
Net weight 214 kg / 471.8 lb

Item dimensions (width x depth x height) 260 x 110 x 74 cm
102.25" x 43.25" x 29.25"

Tabletop options:



- HPL Trespa® 13 mm/0.51" thick .
- FENIX NTM® 12 mm/0.47" thick .
- Dekton® 12 mm/0.47" thick .

HEAVY FURNITURE

expormim

Expormim S.A.
Pol. Ind. Jaime I
46640 Moixent (Valencia) Spain
+34 962 295 144/5
export@expormim.com
www.expormim.com

Expormim USA LLC
(212) 204-8572
usa@expormim.com
www.expormim.com

1/3

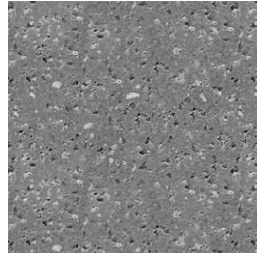
outdoor

frame / estructura

UHPC concrete



C1 stone



C2 slate



C3 terracotta

outdoor

top / tapa

HPL Trespa® - premium



320 silver quartzite - matt



323 natural chalkstone - matt



327 titanium bronze - satin



321 italian slate - matt

FENIX NTM®



029 bianco male



720 nero ingo

Dekton® - kraftizen



K1 albarium



K2 argentium



K3 umber



K4 micron

Dekton® - natural



D3 danae



D2 kelya

expormim

Expormim S.A.
Pol. Ind. Jaime I
46640 Moixent (Valencia) Spain
+34 962 295 144/5
export@expormim.com
www.expormim.com

Expormim USA LLC
(212) 204-8572
usa@expormim.com
www.expormim.com

3/3

outdoor

Talo outdoor

Rectangular dining table / mesa rectangular

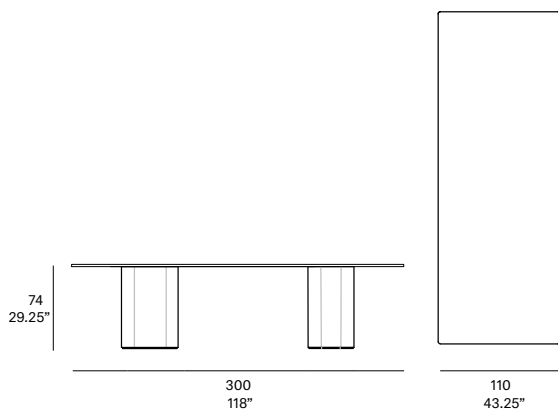
Altherr Désile Park, 2022

C700 300



Dining table with UHPC concrete base made up of natural mineral components and organic fibers (non-metallic), which ensure exceptional resistance to weathering. Tabletop options: HPL Trespa® 13 mm/0.51" thick, FENIX NTM® 12 mm/0.47" thick and Dekton® 8 mm/0.31" thick. Delivered unassembled

Mesa de comedor con estructura de hormigón UHPC compuesto por una mezcla de componentes minerales naturales y fibras orgánicas (no metálicas) que aseguran una excepcional resistencia a la intemperie. Opciones de tablero: HPL Trespa® de 13 mm, FENIX NTM® de 12 mm y Dekton® de 12 mm. Se sirven desmontadas.



Shipment details

Qty 1 dining table (2 boxes)
Volume 0,90 m³ / 31.8 ft³

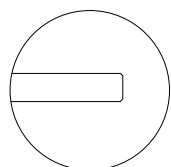
HPL Top option
Gross weight 148 kg / 326.3 lb
Net weight 195 kg / 268 lb

FENIX NTM® Top option
Gross weight 148 kg / 590.8 lb
Net weight 195 kg / 429.9 lb

Dekton® Top option
Gross weight 299 kg / 659.2 lb
Net weight 227 kg / 500.4 lb

Item dimensions
(width x depth x height) 300 x 110 x 74 cm
118" x 43.25" x 29.25"

Tabletop options:



- HPL Trespa® 13 mm/0.51" thick.
- FENIX NTM® 12 mm/0.47" thick.
- Dekton® 12 mm/0.47" thick.

HEAVY FURNITURE

expormim

Expormim S.A.
Pol. Ind. Jaime I
46640 Moixent (Valencia) Spain
+34 962 295 144/5
export@expormim.com
www.expormim.com

Expormim USA LLC
(212) 204-8572
usa@expormim.com
www.expormim.com

1/3

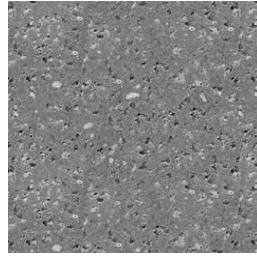
outdoor

frame / estructura

UHPC concrete



C1 stone



C2 slate



C3 terracotta

outdoor

top / tapa

HPL Trespa® - premium



320 silver quartzite - matt



323 natural chalkstone - matt



327 titanium bronze - satin



321 italian slate - matt

FENIX NTM®



029 bianco male



720 nero ingo

Dekton® - kraftizen



K1 albarium



K2 argentium



K3 umber

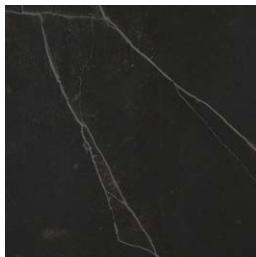


K4 micron

Dekton® - natural



D3 danae



D2 kelya

expormim

Expormim S.A.
Pol. Ind. Jaime I
46640 Moixent (Valencia) Spain
+34 962 295 144/5
export@expormim.com
www.expormim.com

Expormim USA LLC
(212) 204-8572
usa@expormim.com
www.expormim.com

3/3

outdoor

Talo outdoor

Rectangular dining table / mesa rectangular

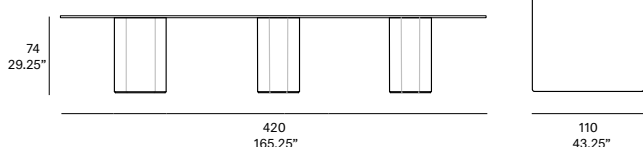
Altherr Désile Park, 2022

C700 420



Dining table with UHPC concrete base made up of natural mineral components and organic fibers (non-metallic), which ensure exceptional resistance to weathering. Tabletop options: HPL Trespa® 13 mm/0.51" thick and FENIX NTM® 12 mm/0.47" thick. Delivered unassembled.

Mesa de comedor con estructura de hormigón UHPC compuesto por una mezcla de componentes minerales naturales y fibras orgánicas (no metálicas) que aseguran una excepcional resistencia a la intemperie. Opciones de tablero: HPL Trespa® de 13 mm y FENIX NTM® de 12 mm. Se sirven desmontadas.



Shipment details

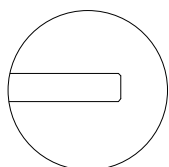
Qty 1 dining table (2 boxes)
Volume 1,27 m³ / 44.9ft³

HPL Top option
Gross weight 383 kg / 844.4 lb
Net weight 280 kg / 617.3 lb

FENIX NTM® Top option
Gross weight 383 kg / 844.4 lb
Net weight 280 kg / 617.3 lb

Item dimensions (width x depth x height) 300 x 110 x 74 cm
118" x 43.25" x 29.25"

Tabletop options:



- HPL Trespa® 13 mm/0.51" thick.
- FENIX NTM® 12 mm/0.47" thick.
- Dekton® 12 mm/0.47" thick.

HEAVY FURNITURE

expormim

Expormim S.A.
Pol. Ind. Jaime I
46640 Moixent (Valencia) Spain
+34 962 295 144/5
export@expormim.com
www.expormim.com

Expormim USA LLC
(212) 204-8572
usa@expormim.com
www.expormim.com

1/3

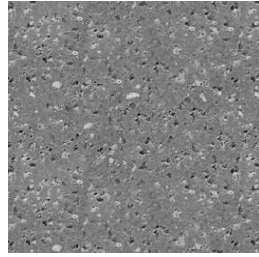
outdoor

frame / estructura

UHPC concrete



C1 stone



C2 slate



C3 terracotta

top / tapa

HPL Trespa® - premium



320 silver quartzite - matt



323 natural chalkstone - matt



327 titanium bronze - satin

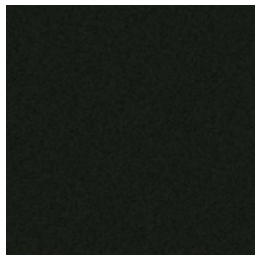


321 italian slate - matt

FENIX NTM®



029 bianco male



720 nero ingo

outdoor

top / tapa

HPL Trespa® - premium



320 silver quartzite - matt



323 natural chalkstone - matt



327 titanium bronze - satin



321 italian slate - matt

FENIX NTM®



029 bianco male



720 nero ingo

Dekton® - kraftizen



K1 albarium



K2 argentium



K3 umber



K4 micron

Dekton® - natural



D3 danae



D2 kelya

expormim

Expormim S.A.
Pol. Ind. Jaime I
46640 Moixent (Valencia) Spain
+34 962 295 144/5
export@expormim.com
www.expormim.com

Expormim USA LLC
(212) 204-8572
usa@expormim.com
www.expormim.com

3/3