

outdoor

Slim Sofa / sof 

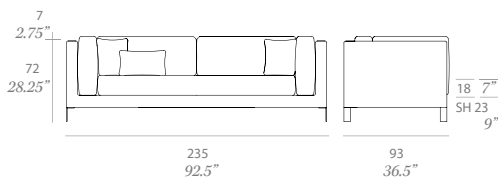
Studio expormim 2011

C653



Sofa with structure made of high resistance aluminum covered with QuickDryFoam. Possibility of customization through a wide variety of technical fabrics completely suitable for outdoor use. Legs made of stainless steel. Injected PA spacers. 2 loose cushions 17.75" x 17.75" + 1 loose cushion 19.75" x 12.5" included. Upholstery*.

Sof  con estructura de aluminio de alta resistencia y recubierto con espuma QuickDryFoam. Posibilidad de personalizaci n mediante una amplia variedad de tejidos t cnicos totalmente aptos para exterior. Patas fabricadas en acero inoxidable. Conteras de inyecci n de PA. Tapizado fijo*.
2 cojines de corativos de 45x45 cm + 1 coj n decorativo de 50x32 cm incluidos.



Shipment details

Qty	1 sofa (1 box)
Volume	1,89 m3 / 67 ft3
Gross weight	77 kg / 170 lb
Net weight	66 kg / 146 lb
Item dimensions (width x depth x height)	235 x 93 x 72 cm 92.5" x 36.5" x 28.25"
COM (1, 40 - 1,50 m / 54"-59")	upholstered: 11,5 m / 12.6 yd loose cushions: 1,5 m / 1.64 yd

* With the aim of extending the service life of the products, Expormim highly recommends the use of protective covers during the periods when the furniture is not being used and exposed to the elements.

* Con la intenci n de alargar la vida  til del producto, Expormim aconseja el uso de fundas protectoras durante los periodos donde el mueble no vaya a ser utilizado de forma continua, quedando expuesto a la intemperie.

expormim

Expormim S.A.
Pol. Ind. Jaime I
46640 Moixent (Valencia) Spain
+34 962 295 144/5
export@expormim.com
www.expormim.com

Expormim USA LLC
(212) 204-8572
usa@expormim.com
www.expormim.com

1/6

Legs / patas

metallic finishes / metales



120 FT off white
fine textured



124 FT linen
fine textured



102 FT light grey
fine textured



113 FT sage
fine textured



110 FT bronze
fine textured



108 FT oxide
fine textured



111 FT graphite
fine textured



satin stainless steel



dolce 07



dolce 16



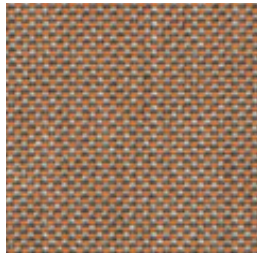
dolce 11



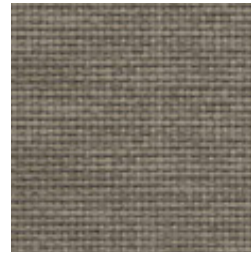
dolce 80



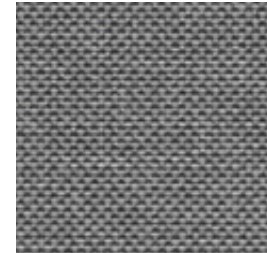
dolce 04



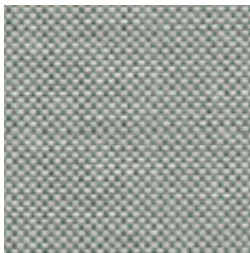
dolce 24



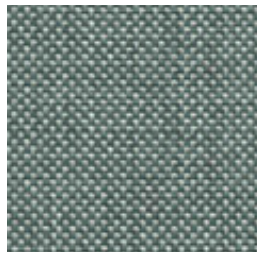
dolce 12



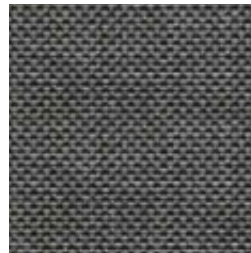
dolce 51



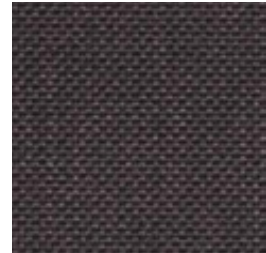
dolce 31



dolce 37



dolce 83



dolce 53

outdoor

Upholstery / tapizado

group 22 - heritage Sunbrella®



heritage papyrus



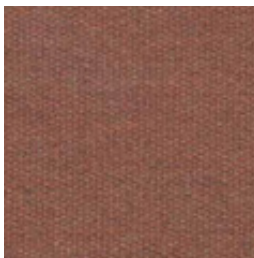
heritage ash



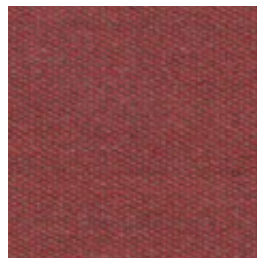
heritage moss



heritage leaf



heritage rust



heritage scarlet



heritage slate



heritage indigo

group 22 - strada Crevin®



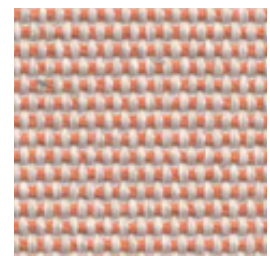
strada 07



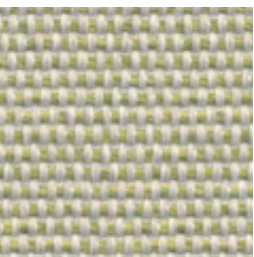
strada 16



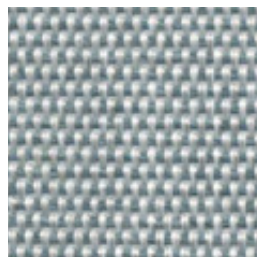
strada 75



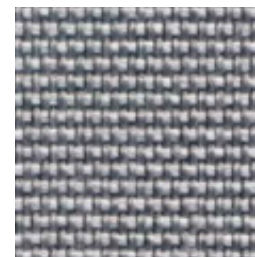
strada 29



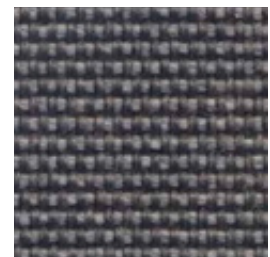
strada 32



strada 43



strada 51

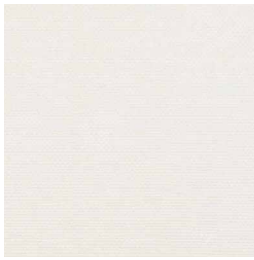


strada 83

outdoor

Upholstery/ tapizado

group 22 - silvertex™



silvertex ice



silvertex macadamia



silvertex sandstone



silvertex taupe

group 22 - zander



zander brilliant white



zander parchment

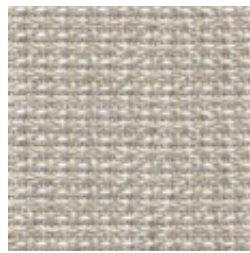


zander ochre

group 22 - tatami



tatami 01



tatami 02



tatami 03

outdoor

Upholstery / tapizado

group 23 - bora bora Crevin®



bora bora 99



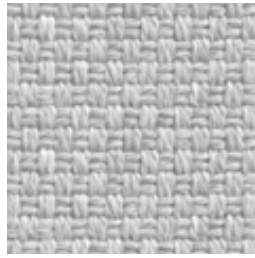
bora bora 08



bora bora 05



bora bora 11



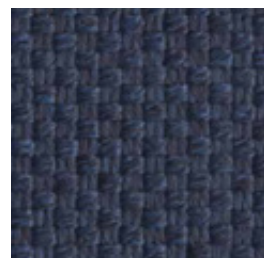
bora bora 50



bora bora 54



bora bora 42



bora bora 47

group 23 - nature



nature 01

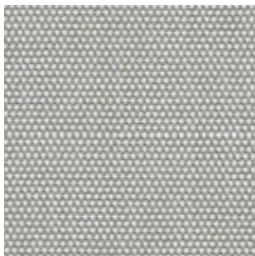


nature 02



nature 03

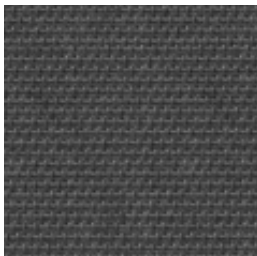
group 23 - sling Sunbrella®



sling sailing seagull



sling sailing space



sling logan graphite

outdoor

Slim Left side module / módulo lateral izq.

Studio expormim 2011

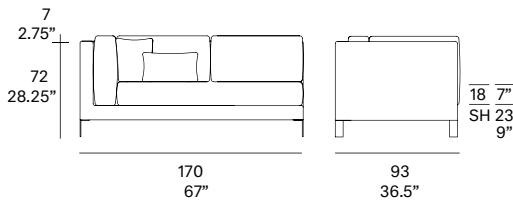
C670



Module with structure made of high resistance aluminum covered with QuickDryFoam. Possibility of customization through a wide variety of technical fabrics completely suitable for outdoor use. Legs made of stainless steel. Injected PA spacers. Upholstery*.

1 loose cushion 17.75"x 17.75" + 1 loose cushion 19.75"x 12.5" included.

Módulo con estructura de aluminio de alta resistencia y recubierto con espuma QuickDryFoam. Posibilidad de personalización mediante una amplia variedad de tejidos técnicos totalmente aptos para exterior. Patas fabricadas en acero inoxidable. Conteras de inyección de PA. Tapizado fijo*. 1 cojín decorativo de 45x45 cm + 1 cojín decorativo de 50x32 cm incluidos.



Shipment details

Qty	1 module (1 box)
Volume	1,39 m3 / 45 ft3
Gross weight	56 kg / 123 lb
Net weight	48 kg / 106 lb
Item dimensions (width x depth x height)	170 x 93 x 72 cm 67" x 36.5" x 28.25"
COM (1, 40 - 1,50 m / 54"-59")	upholstered: 8 m / 8.8 yd loose cushions: 1 m / 1.1 yd

* With the aim of extending the service life of the products, Expormim highly recommends the use of protective covers during the periods when the furniture is not being used and exposed to the elements.

* Con la intención de alargar la vida útil del producto, Expormim aconseja el uso de fundas protectoras durante los periodos donde el mueble no vaya a ser utilizado de forma continua, quedando expuesto a la intemperie.

expormim

Expormim S.A.
Pol. Ind. Jaime I
46640 Moixent (Valencia) Spain
+34 962 295 144/5
export@expormim.com
www.expormim.com

Expormim USA LLC
(212) 204-8572
usa@expormim.com
www.expormim.com

1/6

Legs / patas

metallic finishes / metales



120 FT off white
fine textured



124 FT linen
fine textured



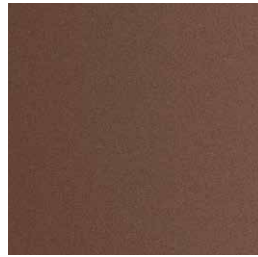
102 FT light grey
fine textured



113 FT sage
fine textured



110 FT bronze
fine textured



108 FT oxide
fine textured



111 FT graphite
fine textured



satin stainless steel

outdoor

Upholstery / tapizado

group 21 - dolce Crevin®



dolce 07



dolce 16



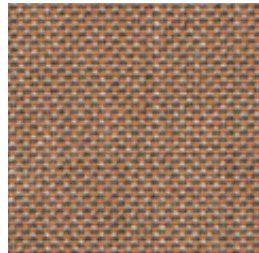
dolce 11



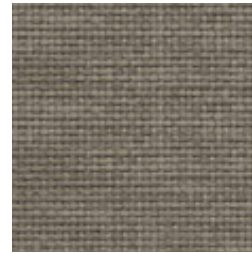
dolce 80



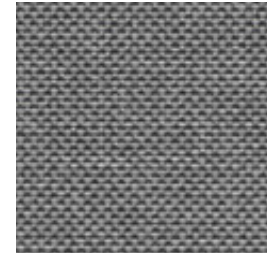
dolce 04



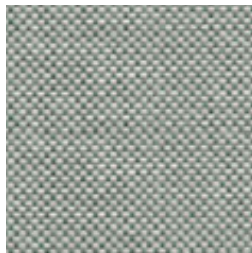
dolce 24



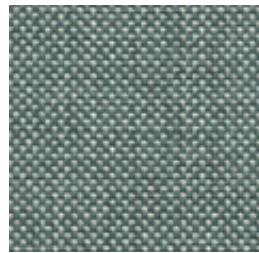
dolce 12



dolce 51



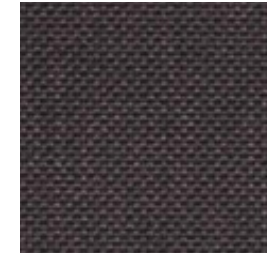
dolce 31



dolce 37



dolce 83



dolce 53

outdoor

Upholstery / tapizado

group 22 - heritage Sunbrella®



heritage papyrus



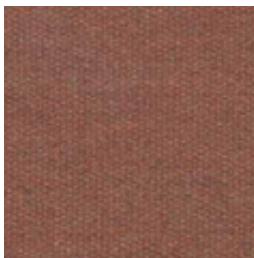
heritage ash



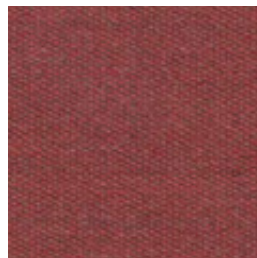
heritage moss



heritage leaf



heritage rust



heritage scarlet

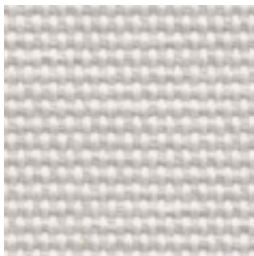


heritage slate



heritage indigo

group 22 - strada Crevin®



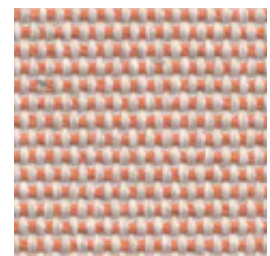
strada 07



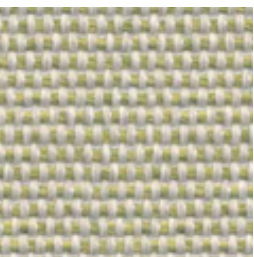
strada 16



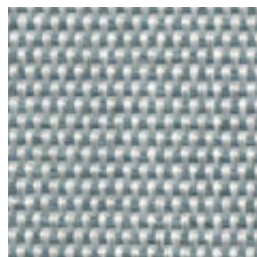
strada 75



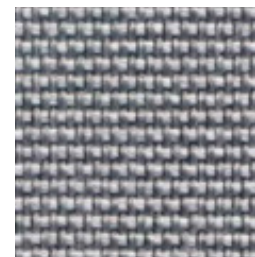
strada 29



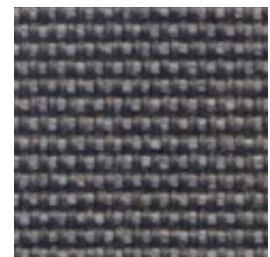
strada 32



strada 43



strada 51

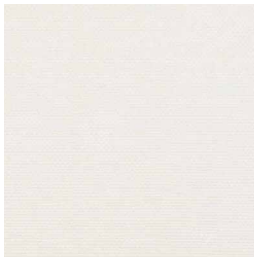


strada 83

outdoor

Upholstery/ tapizado

group 22 - silvertex™



silvertex ice



silvertex macadamia



silvertex sandstone



silvertex taupe

group 22 - zander



zander brilliant white



zander parchment

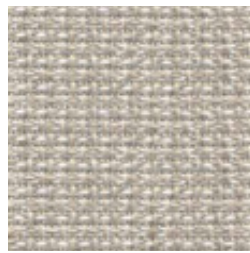


zander ochre

group 22 - tatami



tatami 01



tatami 02



tatami 03

outdoor

Upholstery / tapizado

group 23 - bora bora Crevin®



bora bora 99



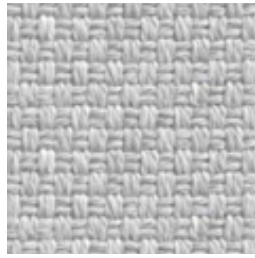
bora bora 08



bora bora 05



bora bora 11



bora bora 50



bora bora 54



bora bora 42



bora bora 47

group 23 - nature



nature 01

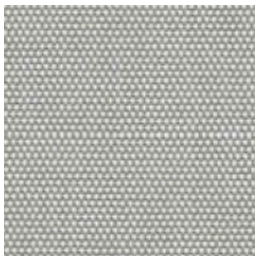


nature 02



nature 03

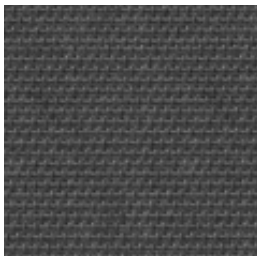
group 23 - sling Sunbrella®



sling sailing seagull



sling sailing space



sling logan graphite

outdoor

Slim Right side module / módulo lateral dcho.

Studio expormim 2011

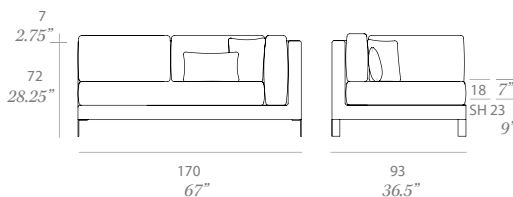
C671



Module with structure made of high resistance aluminum covered with QuickDryFoam. Possibility of customization through a wide variety of technical fabrics completely suitable for outdoor use. Legs made of stainless steel. Injected PA spacers. Upholstery*.

1 loose cushion 17.75"x 17.75" + 1 loose cushion 19.75"x 12.5" included.

Módulo con estructura de aluminio de alta resistencia y recubierto con espuma QuickDryFoam. Posibilidad de personalización mediante una amplia variedad de tejidos técnicos totalmente aptos para exterior. Patas fabricadas en acero inoxidable. Conteras de inyección de PA. Tapizado fijo*. 1 cojín decorativo de 45x45 cm + 1 cojín decorativo de 50x32 cm incluidos.



Shipment details

Qty	1 module (1 box)
Volume	1,39 m3 / 45 ft3
Gross weight	56 kg / 123 lb
Net weight	48 kg / 106 lb
Item dimensions (width x depth x height)	170 x 93 x 72 cm 67" x 36.5" x 28.25"
COM (1, 40 - 1,50 m / 54"-59")	upholstered: 8 m / 8.8 yd loose cushions: 1 m / 1.1 yd

* With the aim of extending the service life of the products, Expormim highly recommends the use of protective covers during the periods when the furniture is not being used and exposed to the elements.

* Con la intención de alargar la vida útil del producto, Expormim aconseja el uso de fundas protectoras durante los periodos donde el mueble no vaya a ser utilizado de forma continua, quedando expuesto a la intemperie.

expormim

Expormim S.A.
Pol. Ind. Jaime I
46640 Moixent (Valencia) Spain
+34 962 295 144/5
export@expormim.com
www.expormim.com

Expormim USA LLC
(212) 204-8572
usa@expormim.com
www.expormim.com

1/6

Legs / patas

metallic finishes / metales



120 FT off white
fine textured



124 FT linen
fine textured



102 FT light grey
fine textured



113 FT sage
fine textured



110 FT bronze
fine textured



108 FT oxide
fine textured



111 FT graphite
fine textured



satin stainless steel



dolce 07



dolce 16



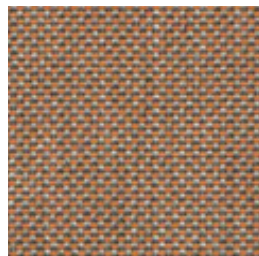
dolce 11



dolce 80



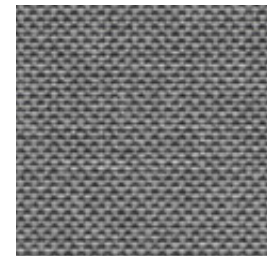
dolce 04



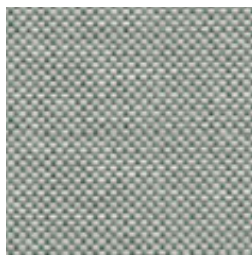
dolce 24



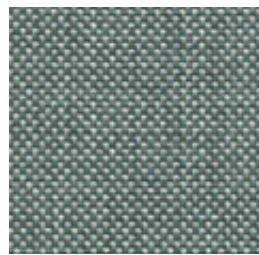
dolce 12



dolce 51



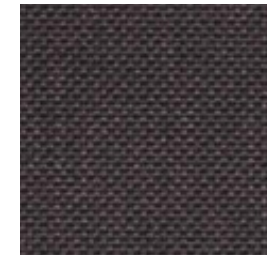
dolce 31



dolce 37



dolce 83



dolce 53

outdoor

Upholstery / tapizado

group 22 - heritage Sunbrella®



heritage papyrus



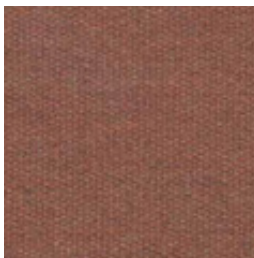
heritage ash



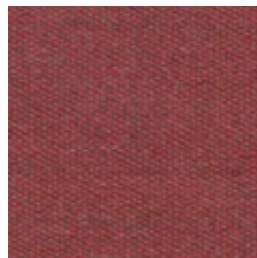
heritage moss



heritage leaf



heritage rust



heritage scarlet



heritage slate



heritage indigo

group 22 - strada Crevin®



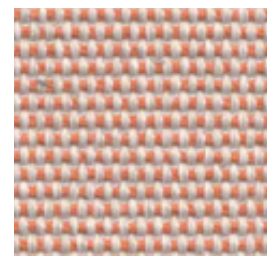
strada 07



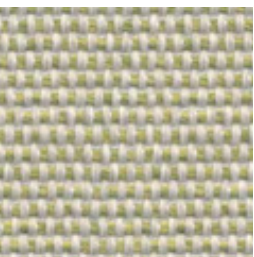
strada 16



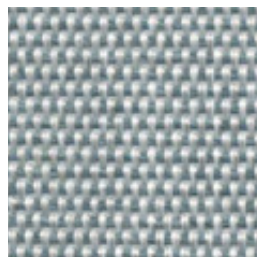
strada 75



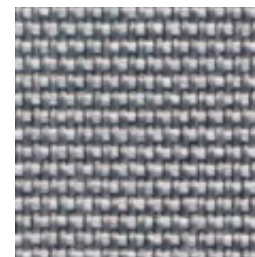
strada 29



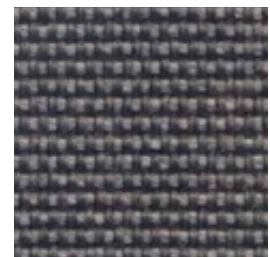
strada 32



strada 43



strada 51

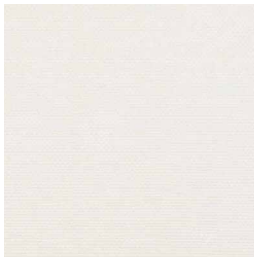


strada 83

outdoor

Upholstery/ tapizado

group 22 - silvertex™



silvertex ice



silvertex macadamia



silvertex sandstone



silvertex taupe

group 22 - zander



zander brilliant white



zander parchment

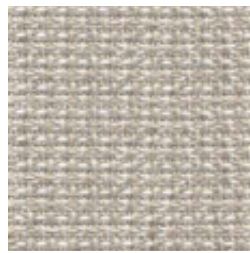


zander ochre

group 22 - tatami



tatami 01



tatami 02



tatami 03

outdoor

Upholstery / tapizado

group 23 - bora bora Crevin®



bora bora 99



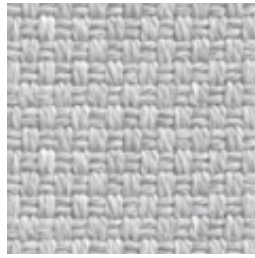
bora bora 08



bora bora 05



bora bora 11



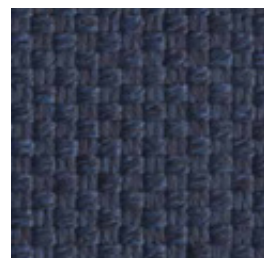
bora bora 50



bora bora 54



bora bora 42



bora bora 47

group 23 - nature



nature 01

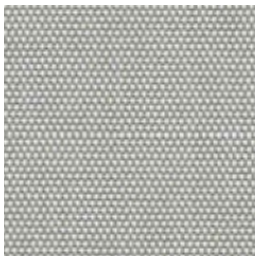


nature 02



nature 03

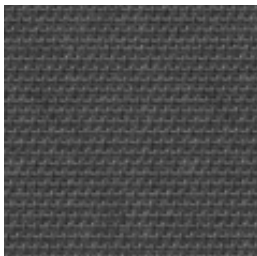
group 23 - sling Sunbrella®



sling sailing seagull



sling sailing space



sling logan graphite

outdoor

Slim Central module / módulo central

Studio expormim 2011

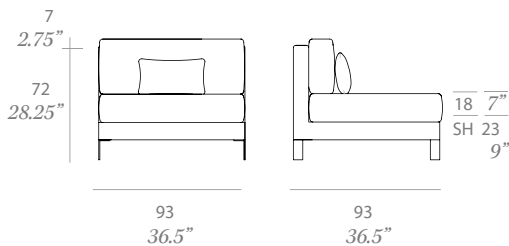
C672



Module with structure made of high resistance aluminum covered with QuickDryFoam. Possibility of customization through a wide variety of technical fabrics completely suitable for outdoor use. Legs made of stainless steel. Injected PA spacers. Upholstery*.

1 loose cushion 19.75"x 12.5" included.

Módulo con estructura de aluminio de alta resistencia y recubierto con espuma QuickDryFoam. Posibilidad de personalización mediante una amplia variedad de tejidos técnicos totalmente aptos para exterior. Patas fabricadas en acero inoxidable. Conteras de inyección de PA. Tapizado fijo*.
1 cojín decorativo de 45x45 cm incluidos.



Shipment details

Qty	1 module (1 box)
Volume	0,77 m3 / 27.2 ft3
Gross weight	33 kg / 73 lb
Net weight	26 kg / 57 lb
Item dimensions (width x depth x height)	93 x 93 x 72 cm 36.5" x 36.5" x 28.25"
COM (1, 40 - 1,50 m / 54"-59")	upholstered: 4,2 m / 4.6 yd loose cushions: 0,5 m / 0.6 yd

* With the aim of extending the service life of the products, Expormim highly recommends the use of protective covers during the periods when the furniture is not being used and exposed to the elements.

* Con la intención de alargar la vida útil del producto, Expormim aconseja el uso de fundas protectoras durante los periodos donde el mueble no vaya a ser utilizado de forma continua, quedando expuesto a la intemperie.

expormim

Expormim S.A.
Pol. Ind. Jaime I
46640 Moixent (Valencia) Spain
+34 962 295 144/5
export@expormim.com
www.expormim.com

Expormim USA LLC
(212) 204-8572
usa@expormim.com
www.expormim.com

1/6

Legs / patas

metallic finishes / metales



120 FT off white
fine textured



124 FT linen
fine textured



102 FT light grey
fine textured



113 FT sage
fine textured



110 FT bronze
fine textured



108 FT oxide
fine textured



111 FT graphite
fine textured



satin stainless steel

outdoor

Upholstery / tapizado

group 21 - dolce Crevin®



dolce 07



dolce 16



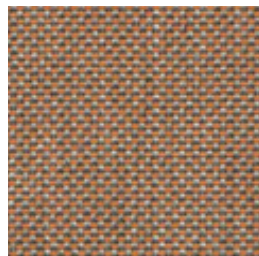
dolce 11



dolce 80



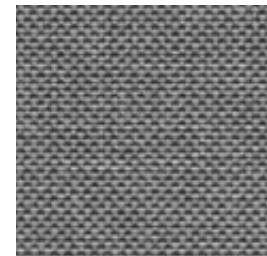
dolce 04



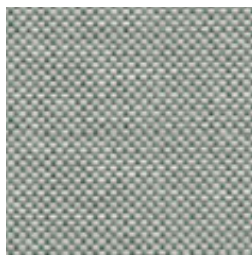
dolce 24



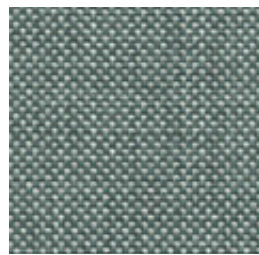
dolce 12



dolce 51



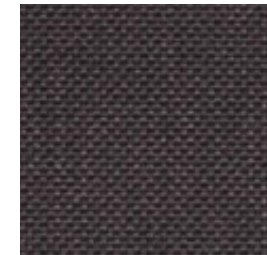
dolce 31



dolce 37



dolce 83



dolce 53

outdoor

Upholstery / tapizado

group 22 - heritage Sunbrella®



heritage papyrus



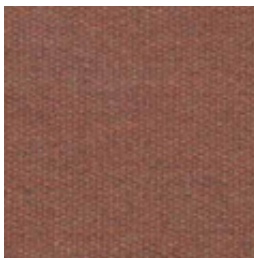
heritage ash



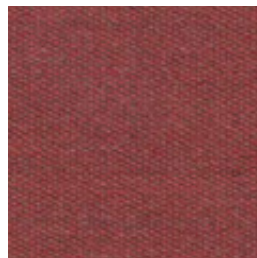
heritage moss



heritage leaf



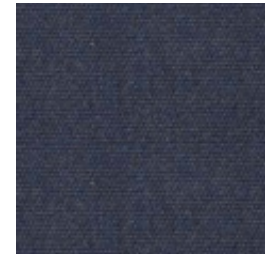
heritage rust



heritage scarlet



heritage slate



heritage indigo

group 22 - strada Crevin®



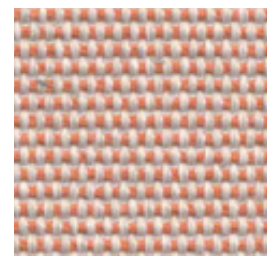
strada 07



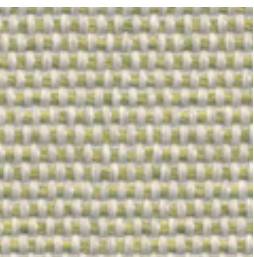
strada 16



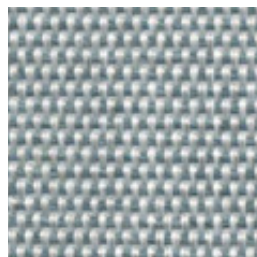
strada 75



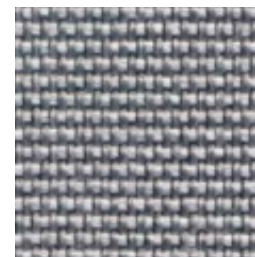
strada 29



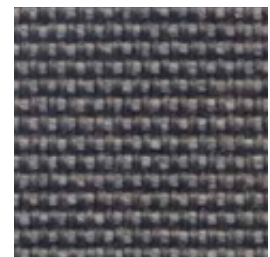
strada 32



strada 43



strada 51

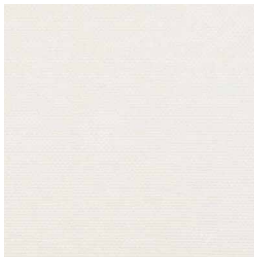


strada 83

outdoor

Upholstery/ tapizado

group 22 - silvertex™



silvertex ice



silvertex macadamia



silvertex sandstone



silvertex taupe

group 22 - zander



zander brilliant white



zander parchment

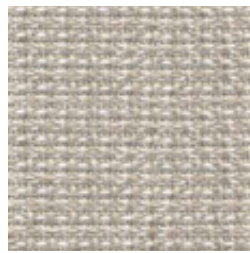


zander ochre

group 22 - tatami



tatami 01



tatami 02



tatami 03

outdoor

Upholstery / tapizado

group 23 - bora bora Crevin®



bora bora 99



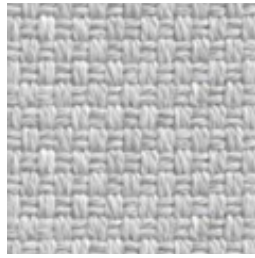
bora bora 08



bora bora 05



bora bora 11



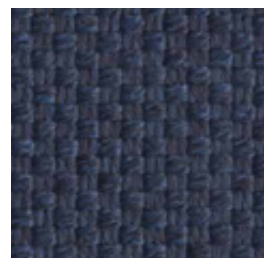
bora bora 50



bora bora 54



bora bora 42



bora bora 47

group 23 - nature



nature 01

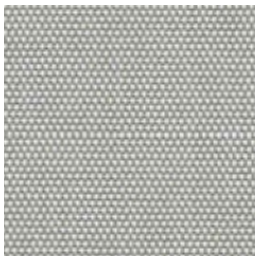


nature 02



nature 03

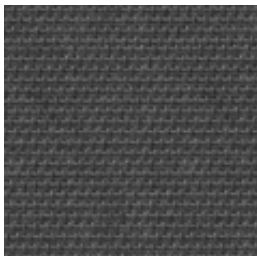
group 23 - sling Sunbrella®



sling sailing seagull



sling sailing space



sling logan graphite

expormim

Expormim S.A.
Pol. Ind. Jaime I
46640 Moixent (Valencia) Spain
+34 962 295 144/5
export@expormim.com
www.expormim.com

Expormim USA LLC
(212) 204-8572
usa@expormim.com
www.expormim.com

outdoor

Slim Left chaise longue module / módulo chaise longue izq.

Studio expormim 2011

C673



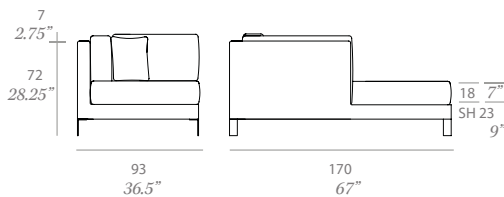
Module with structure made of high resistance aluminum covered with QuickDryFoam. Possibility of customization through a wide variety of technical fabrics completely suitable for outdoor use. Legs made of stainless steel. Injected PA spacers. Upholstery*.

1 loose cushion 17.75"x 17.75" included.

Módulo con estructura de aluminio de alta resistencia y recubierto con espuma QuickDryFoam. Posibilidad de personalización mediante una amplia variedad de tejidos técnicos totalmente aptos para exterior.

Patas fabricadas en acero inoxidable. Conteras de inyección de PA. Tapizado fijo*.

1 cojín decorativo de 45x45 cm incluidos.



Shipment details

Qty	1 module (1 box)
Volume	1,39 m3 / 49 ft3
Gross weight	53 kg / 117 lb
Net weight	45 kg / 99 lb
Item dimensions (width x depth x height)	93 x 170 x 72 cm 36.5" x 67" x 28.25"
COM (1, 40 - 1,50 m / 54"-59")	upholstered: 7 m / 7.7 yd loose cushions: 0,5 m / 0.6 yd

* With the aim of extending the service life of the products, Expormim highly recommends the use of protective covers during the periods when the furniture is not being used and exposed to the elements.

* Con la intención de alargar la vida útil del producto, Expormim aconseja el uso de fundas protectoras durante los periodos donde el mueble no vaya a ser utilizado de forma continua, quedando expuesto a la intemperie.

expormim

Expormim S.A.
Pol. Ind. Jaime I
46640 Moixent (Valencia) Spain
+34 962 295 144/5
export@expormim.com
www.expormim.com

Expormim USA LLC
(212) 204-8572
usa@expormim.com
www.expormim.com

1/6

Legs / patas

metallic finishes / metales



120 FT off white
fine textured



124 FT linen
fine textured



102 FT light grey
fine textured



113 FT sage
fine textured



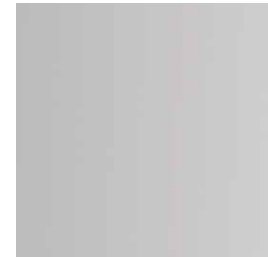
110 FT bronze
fine textured



108 FT oxide
fine textured



111 FT graphite
fine textured



satin stainless steel

outdoor

Upholstery / tapizado

group 21 - dolce Crevin®



dolce 07



dolce 16



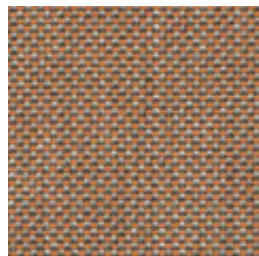
dolce 11



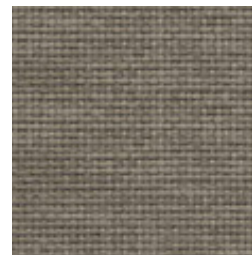
dolce 80



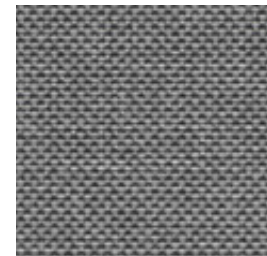
dolce 04



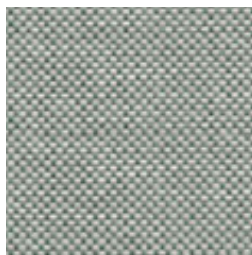
dolce 24



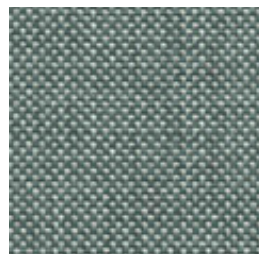
dolce 12



dolce 51



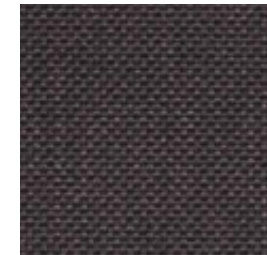
dolce 31



dolce 37



dolce 83



dolce 53

outdoor

Upholstery / tapizado

group 22 - heritage Sunbrella®



heritage papyrus



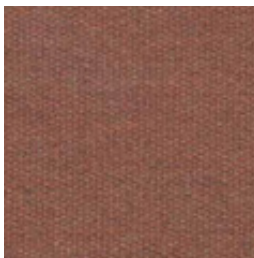
heritage ash



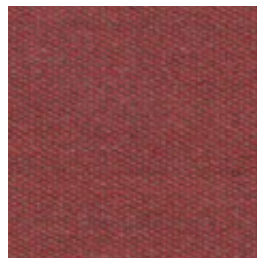
heritage moss



heritage leaf



heritage rust



heritage scarlet



heritage slate



heritage indigo

group 22 - strada Crevin®



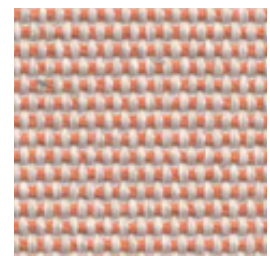
strada 07



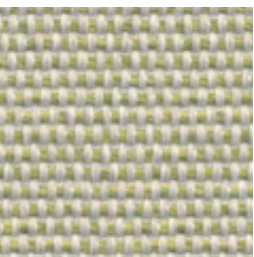
strada 16



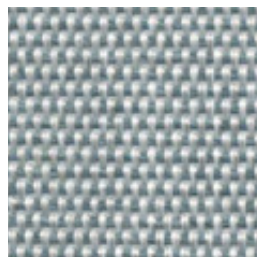
strada 75



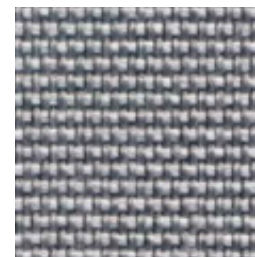
strada 29



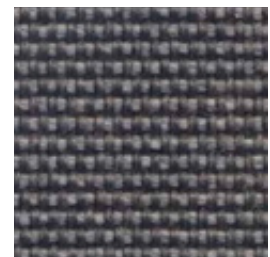
strada 32



strada 43



strada 51

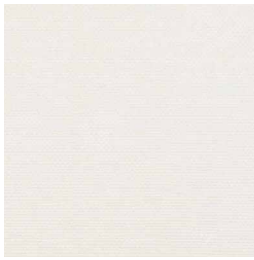


strada 83

outdoor

Upholstery/ tapizado

group 22 - silvertex™



silvertex ice



silvertex macadamia



silvertex sandstone



silvertex taupe

group 22 - zander



zander brilliant white



zander parchment



zander ochre

group 22 - tatami



tatami 01



tatami 02



tatami 03

outdoor

Upholstery / tapizado

group 23 - bora bora Crevin®



bora bora 99



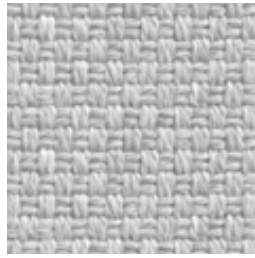
bora bora 08



bora bora 05



bora bora 11



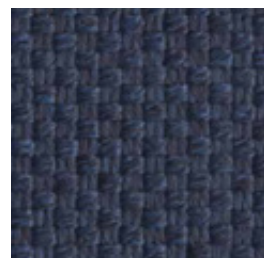
bora bora 50



bora bora 54



bora bora 42



bora bora 47

group 23 - nature



nature 01

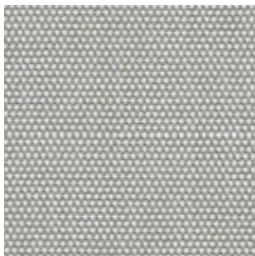


nature 02



nature 03

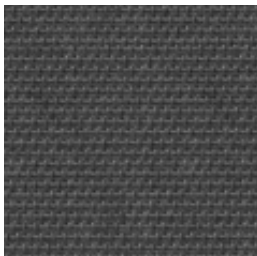
group 23 - sling Sunbrella®



sling sailing seagull



sling sailing space



sling logan graphite

outdoor

Slim Right chaise longue module / módulo chaise longue dcho.

Studio expormim 2011

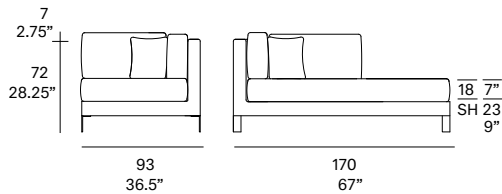
C674



Module with structure made of high resistance aluminum covered with QuickDryFoam. Possibility of customization through a wide variety of technical fabrics completely suitable for outdoor use. Legs made of stainless steel. Injected PA spacers. Upholstery*.

1 loose cushion 17.75"x 17.75" included.

Módulo con estructura de aluminio de alta resistencia y recubierto con espuma QuickDryFoam. Posibilidad de personalización mediante una amplia variedad de tejidos técnicos totalmente aptos para exterior. Patas fabricadas en acero inoxidable. Conteras de inyección de PA. Tapizado fijo*.
1 cojín decorativo de 45x45 cm incluidos.



Shipment details

Qty	1 module (1 box)
Volume	1,39 m3 / 49 ft3
Gross weight	53 kg / 117 lb
Net weight	45 kg / 99 lb
Item dimensions (width x depth x height)	93 x 170 x 72 cm 36.5" x 67" x 28.25"
COM (1, 40 - 1,50 m / 54"-59")	upholstered: 7 m / 7.7 yd loose cushions: 0,5 m / 0.6 yd

* With the aim of extending the service life of the products, Expormim highly recommends the use of protective covers during the periods when the furniture is not being used and exposed to the elements.

* Con la intención de alargar la vida útil del producto, Expormim aconseja el uso de fundas protectoras durante los periodos donde el mueble no vaya a ser utilizado de forma continua, quedando expuesto a la intemperie.

expormim

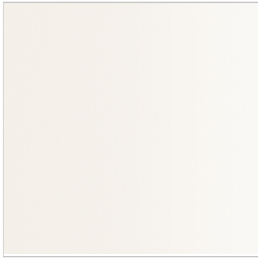
Expormim S.A.
Pol. Ind. Jaime I
46640 Moixent (Valencia) Spain
+34 962 295 144/5
export@expormim.com
www.expormim.com

Expormim USA LLC
(212) 204-8572
usa@expormim.com
www.expormim.com

1/6

Legs / patas

metallic finishes / metales



120 FT off white
fine textured



124 FT linen
fine textured



102 FT light grey
fine textured



111 FT graphite
fine textured



108 FT oxide
fine textured



110 FT bronze
fine textured



113 FT sage
fine textured



satin stainless steel

outdoor

Upholstery / tapizado

group 21 - dolce Crevin®



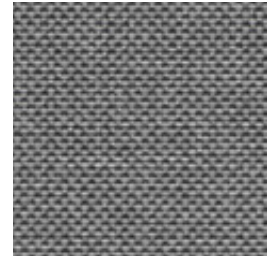
dolce 07



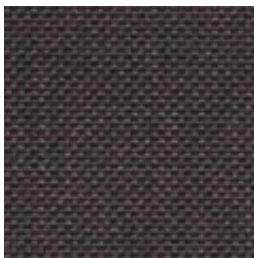
dolce 16



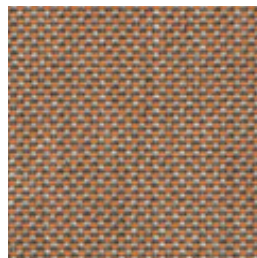
dolce 80



dolce 51



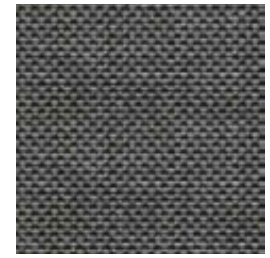
dolce 53



dolce 24



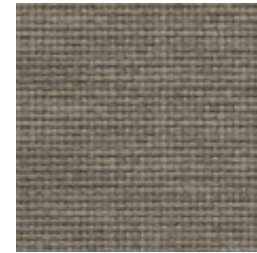
dolce 04



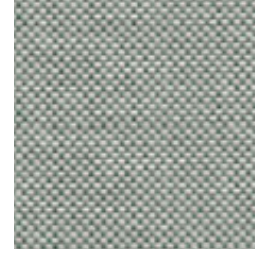
dolce 83



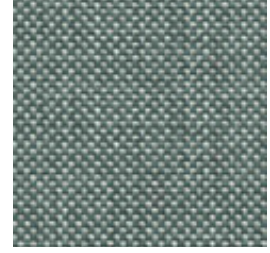
dolce 11



dolce 12



dolce 31



dolce 37

outdoor

Upholstery / tapizado

group 22 - heritage Sunbrella®



heritage papyrus



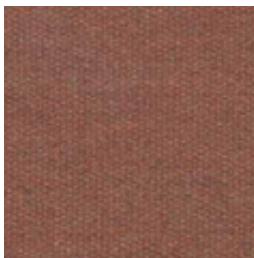
heritage ash



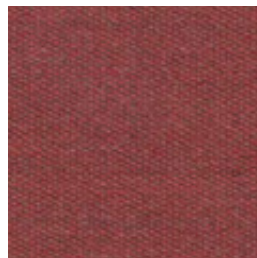
heritage moss



heritage leaf



heritage rust



heritage scarlet



heritage slate



heritage indigo

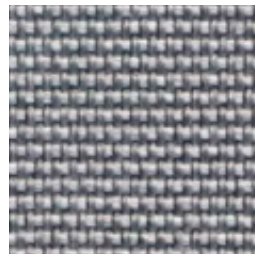
group 22 - strada Crevin®



strada 07



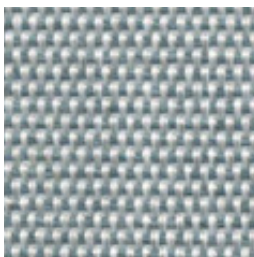
strada 75



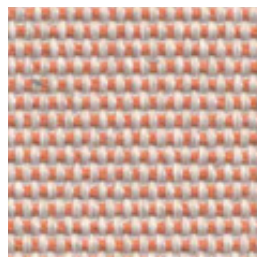
strada 51



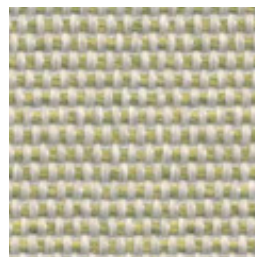
strada 83



strada 43



strada 29



strada 32

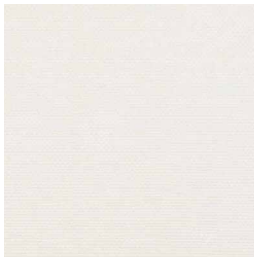


strada 16

outdoor

Upholstery/ tapizado

group 22 - silvertex™



silvertex ice



silvertex macadamia



silvertex sandstone



silvertex taupe

group 22 - zander



zander brilliant white



zander parchment

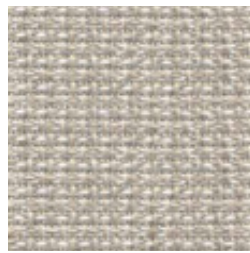


zander ochre

group 22 - tatami



tatami 01



tatami 02



tatami 03

outdoor

Upholstery / tapizado

group 23 - bora bora Crevin®



bora bora 99



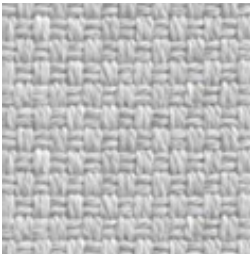
bora bora 08



bora bora 11



bora bora 05



bora bora 50



bora bora 54



bora bora 42



bora bora 47

group 23 - nature



nature 01

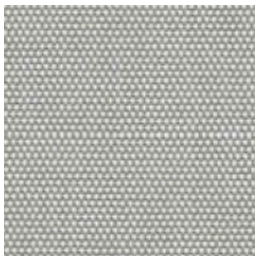


nature 02



nature 03

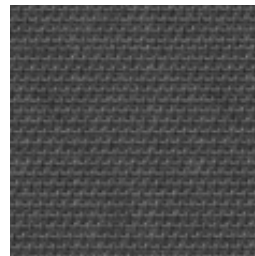
group 23 - sling Sunbrella®



sling sailing seagull



sling sailing space



sling logan graphite

outdoor

Slim Corner module / módulo esquina

Studio expormim 2011

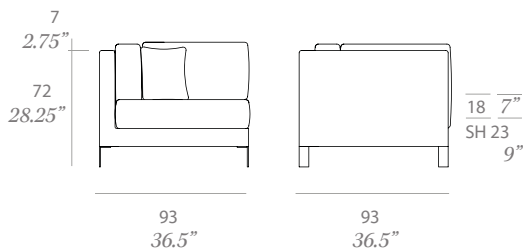
C675



Module with structure made of high resistance aluminum covered with QuickDryFoam. Possibility of customization through a wide variety of technical fabrics completely suitable for outdoor use. Legs made of stainless steel. Injected PA spacers. Upholstery*.

1 loose cushion 17.75"x 17.75" included.

Módulo con estructura de aluminio de alta resistencia y recubierto con espuma QuickDryFoam. Posibilidad de personalización mediante una amplia variedad de tejidos técnicos totalmente aptos para exterior. Patas fabricadas en acero inoxidable. Conteras de inyección de PA. Tapizado fijo*.
1 cojín decorativo de 45x45 cm incluidos.



Shipment details

Qty	1 module (1 box)
Volume	0,77 m3 / 27.2 ft3
Gross weight	37 kg / 82 lb
Net weight	30 kg / 66 lb
Item dimensions (width x depth x height)	93 x 93 x 72 cm 36.5" x 36.5" x 28.25"
COM (1, 40 - 1,50 m / 54"-59")	upholstered: 6 m / 6.6 yd loose cushions: 0,5 m / 0.6 yd

* With the aim of extending the service life of the products, Expormim highly recommends the use of protective covers during the periods when the furniture is not being used and exposed to the elements.

* Con la intención de alargar la vida útil del producto, Expormim aconseja el uso de fundas protectoras durante los periodos donde el mueble no vaya a ser utilizado de forma continua, quedando expuesto a la intemperie.

expormim

Expormim S.A.
Pol. Ind. Jaime I
46640 Moixent (Valencia) Spain
+34 962 295 144/5
export@expormim.com
www.expormim.com

Expormim USA LLC
(212) 204-8572
usa@expormim.com
www.expormim.com

1/6

Legs / patas

metallic finishes / metales



120 FT off white
fine textured



124 FT linen
fine textured



102 FT light grey
fine textured



113 FT sage
fine textured



110 FT bronze
fine textured



108 FT oxide
fine textured



111 FT graphite
fine textured



satin stainless steel

outdoor

Upholstery / tapizado

group 21 - dolce Crevin®



dolce 07



dolce 16



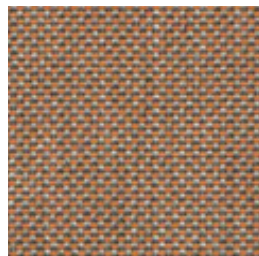
dolce 11



dolce 80



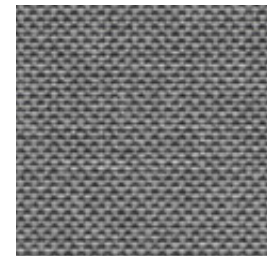
dolce 04



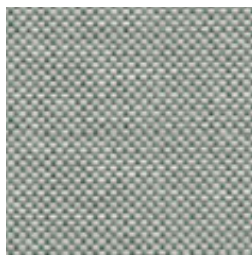
dolce 24



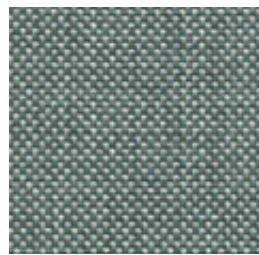
dolce 12



dolce 51



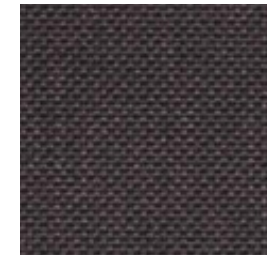
dolce 31



dolce 37



dolce 83



dolce 53

outdoor

Upholstery / tapizado

group 22 - heritage Sunbrella®



heritage papyrus



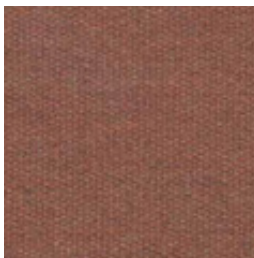
heritage ash



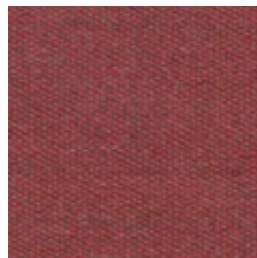
heritage moss



heritage leaf



heritage rust



heritage scarlet



heritage slate



heritage indigo

group 22 - strada Crevin®



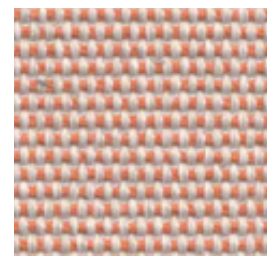
strada 07



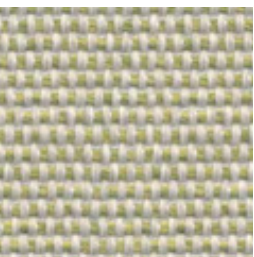
strada 16



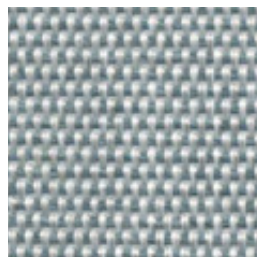
strada 75



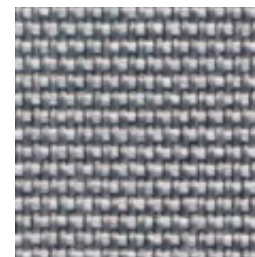
strada 29



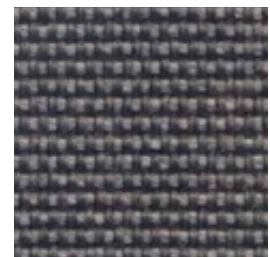
strada 32



strada 43



strada 51

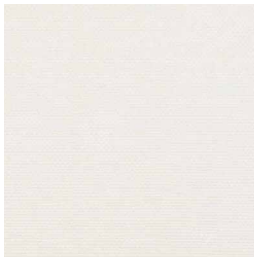


strada 83

outdoor

Upholstery/ tapizado

group 22 - silvertex™



silvertex ice



silvertex macadamia



silvertex sandstone



silvertex taupe

group 22 - zander



zander brilliant white



zander parchment

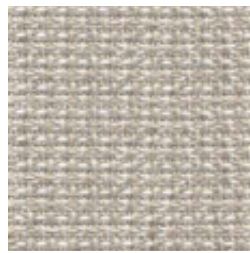


zander ochre

group 22 - tatami



tatami 01



tatami 02



tatami 03

outdoor

Upholstery / tapizado

group 23 - bora bora Crevin®



bora bora 99



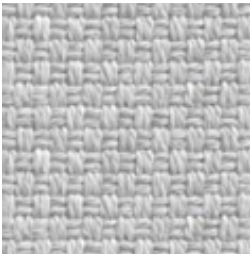
bora bora 08



bora bora 05



bora bora 11



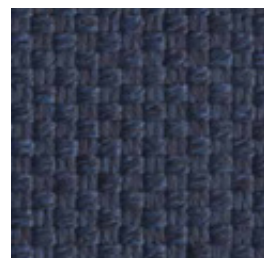
bora bora 50



bora bora 54



bora bora 42



bora bora 47

group 23 - nature



nature 01

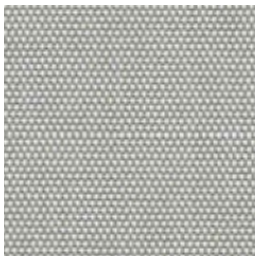


nature 02



nature 03

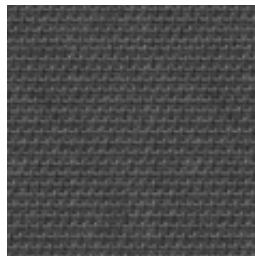
group 23 - sling Sunbrella®



sling sailing seagull



sling sailing space



sling logan graphite

outdoor

Slim

Double central module / módulo central doble

Studio expormim, 2011

C678

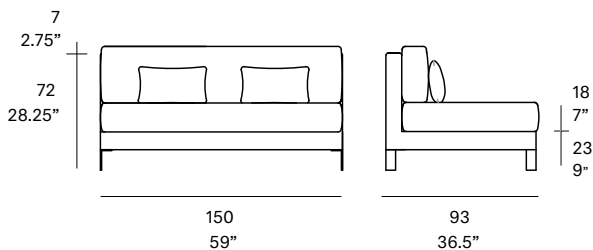


Module with structure made of high resistance aluminum covered with QuickDryFoam. Possibility of customization through a wide variety of technical fabrics completely suitable for outdoor use. Legs made of stainless steel. Injected PA spacers. Upholstery*.

Módulo con estructura de aluminio de alta resistencia y recubierto con espuma QuickDryFoam. Posibilidad de personalización mediante una amplia variedad de tejidos técnicos totalmente aptos para exterior. Patas fabricadas en acero inoxidable. Conteras de inyección de PA. Tapizado fijo*.

Shipment details

Qty	1 module (1 box)
Volume	1,55 m3 / 54.7 ft3
Gross weight	48 kg / 105.8 lb
Net weight	40 kg / 88.2 lb
Item dimensions (width x depth x height)	150 x 93 x 72 cm 59" x 36.5" x 28.25"
COM (1, 40 - 1,50 m / 54"-59")	upholstered: 6 m / 6.6 yd loose cushions: 1 m / 1.1 yd



* With the aim of extending the service life of the products, Expormim highly recommends the use of protective covers during the periods when the furniture is not being used and exposed to the elements.

* Con la intención de alargar la vida útil del producto, Expormim aconseja el uso de fundas protectoras durante los periodos donde el mueble no vaya a ser utilizado de forma continua, quedando expuesto a la intemperie.

expormim

Expormim S.A.
Pol. Ind. Jaime I
46640 Moixent (Valencia) Spain
+34 962 295 144/5
export@expormim.com
www.expormim.com

Expormim USA LLC
(212) 204-8572
usa@expormim.com
www.expormim.com

1/6

Legs / patas

metallic finishes / metales



120 FT off white
fine textured



124 FT linen
fine textured



102 FT light grey
fine textured



113 FT sage
fine textured



110 FT bronze
fine textured



108 FT oxide
fine textured



111 FT graphite
fine textured



satin stainless steel

outdoor

Upholstery / tapizado

group 21 - dolce Crevin®



dolce 07



dolce 16



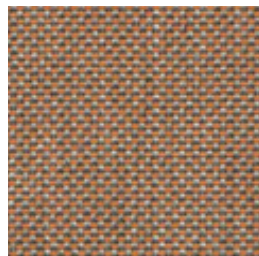
dolce 11



dolce 80



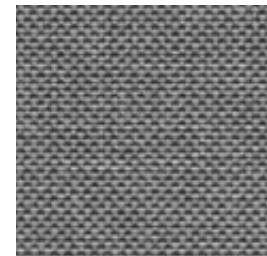
dolce 04



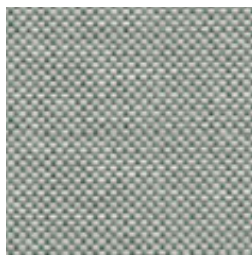
dolce 24



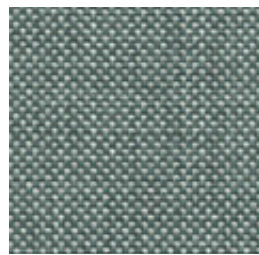
dolce 12



dolce 51



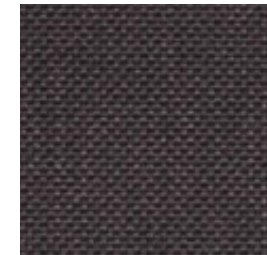
dolce 31



dolce 37



dolce 83



dolce 53

outdoor

Upholstery / tapizado

group 22 - heritage Sunbrella®



heritage papyrus



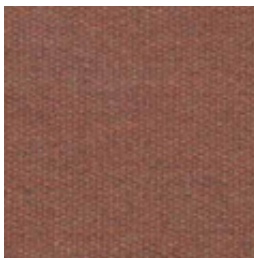
heritage ash



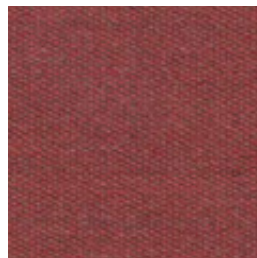
heritage moss



heritage leaf



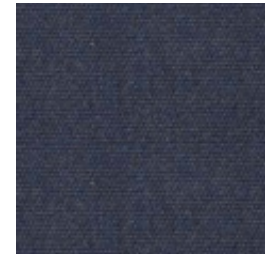
heritage rust



heritage scarlet



heritage slate



heritage indigo

group 22 - strada Crevin®



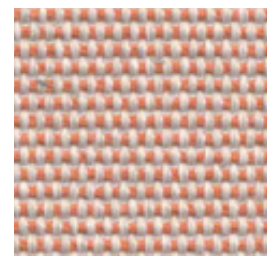
strada 07



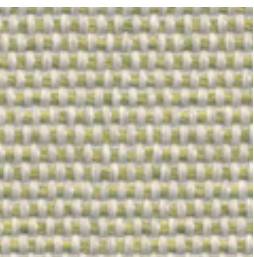
strada 16



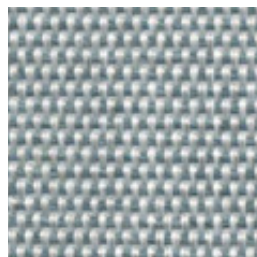
strada 75



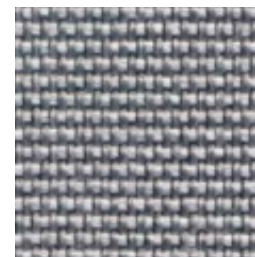
strada 29



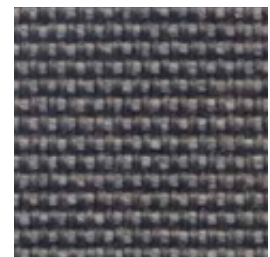
strada 32



strada 43



strada 51

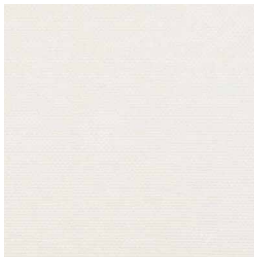


strada 83

outdoor

Upholstery/ tapizado

group 22 - silvertex™



silvertex ice



silvertex macadamia



silvertex sandstone



silvertex taupe

group 22 - zander



zander brilliant white



zander parchment

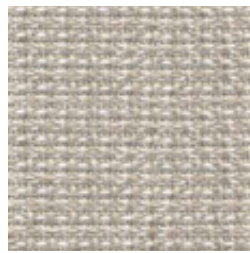


zander ochre

group 22 - tatami



tatami 01



tatami 02



tatami 03

outdoor

Upholstery / tapizado

group 23 - bora bora Crevin®



bora bora 99



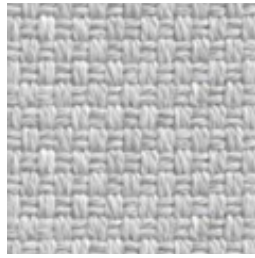
bora bora 08



bora bora 05



bora bora 11



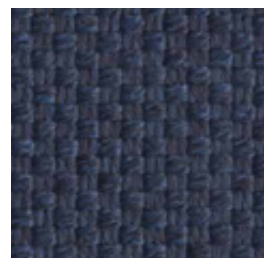
bora bora 50



bora bora 54



bora bora 42



bora bora 47

group 23 - nature



nature 01

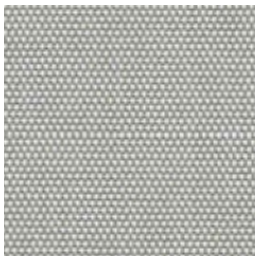


nature 02



nature 03

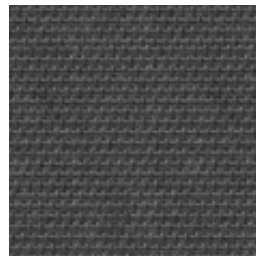
group 23 - sling Sunbrella®



sling sailing seagull



sling sailing space



sling logan graphite