

outdoor

Plump Sofa / sofá

Studio expormim 2014

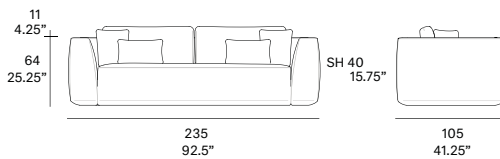
C863



Sofa made of high resistance aluminum tube and upholstered with foam of different densities. Possibility of customization through a wide variety of technical fabrics completely suitable for outdoor use. Upholstery*.

2 loose cushions 17.75"x 17.75" + 2 loose cushions 19.75"x 12.5" included.

Sofá fabricado en estructura de aluminio de alta resistencia y tapizado con espuma de diferentes densidades. Posibilidad de personalización mediante una amplia variedad de tejidos técnicos totalmente aptos para exteriores. Tapizado fijo*.
2 cojines decorativos de 45x45 cm + 2 cojines decorativos de 50x32 cm incluidos.



Shipment details

Qty	1 sofa (1 box)
Volume	1,8 m3 / 63.6 ft3
Gross weight	67 kg / 148 lb
Net weight	58 kg / 128 lb
Item dimensions (width x depth x height)	235 x 105 x 64 cm 92.5" x 41.25" x 25.25"
COM (1, 40 - 1,50 m / 54"-59")	upholstered: 12 m / 13.1 yd loose cushions: 2 m / 2.2 yd

Certifications

UNE EN 581-1:2017
UNE EN 581-2:2016
UNE EN 1022:2005

* With the aim of extending the service life of the products, Expormim highly recommends the use of protective covers during the periods when the furniture is not being used and exposed to the elements.

* Con la intención de alargar la vida útil del producto, Expormim aconseja el uso de fundas protectoras durante los periodos donde el mueble no vaya a ser utilizado de forma continua, quedando expuesto a la intemperie.

expormim

Expormim S.A.
Pol. Ind. Jaime I
46640 Moixent (Valencia) Spain
+34 962 295 144/5
export@expormim.com
www.expormim.com

Expormim USA LLC
212 204 8572
usa@expormim.com
www.expormim.com

1/5

outdoor

Upholstery / tapizado

group 21 - dolce Crevin®



dolce 07



dolce 16



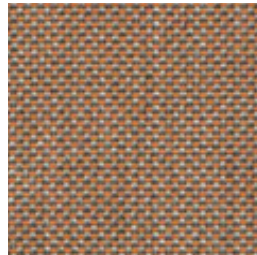
dolce 11



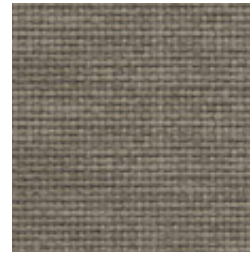
dolce 80



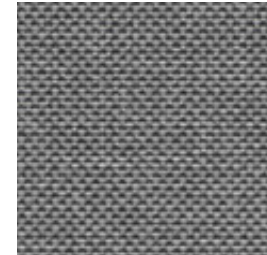
dolce 04



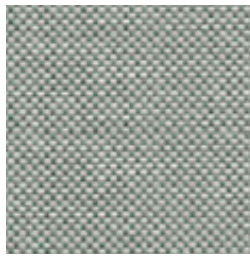
dolce 24



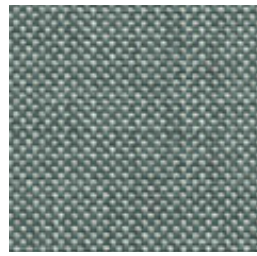
dolce 12



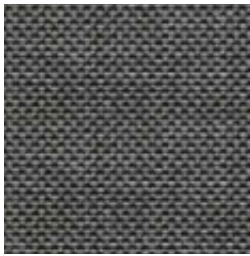
dolce 51



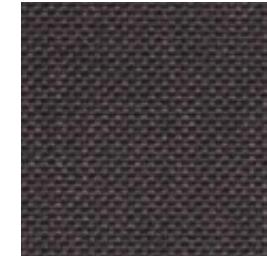
dolce 31



dolce 37



dolce 83



dolce 53

outdoor

Upholstery / tapizado

group 22 - heritage Sunbrella®



heritage papyrus



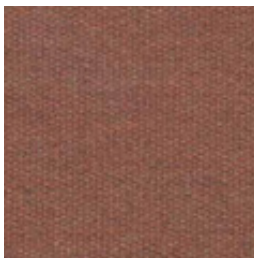
heritage ash



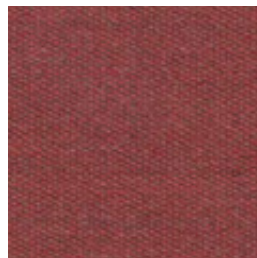
heritage moss



heritage leaf



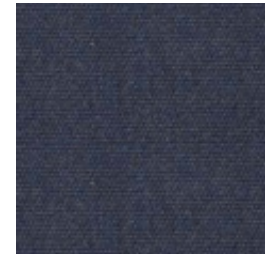
heritage rust



heritage scarlet



heritage slate



heritage indigo

group 22 - strada Crevin®



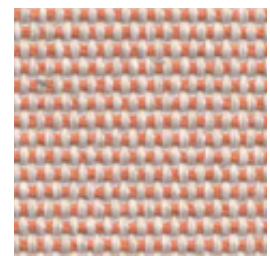
strada 07



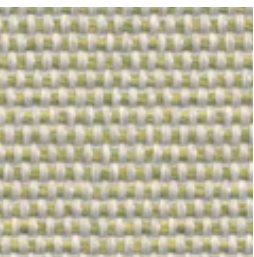
strada 16



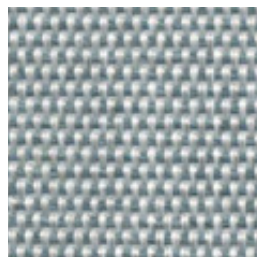
strada 75



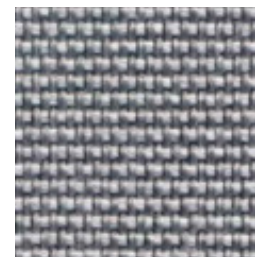
strada 29



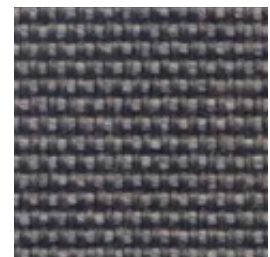
strada 32



strada 43



strada 51

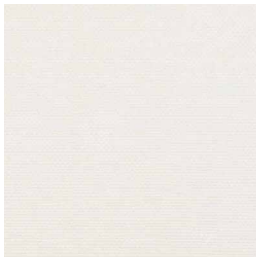


strada 83

outdoor

Upholstery/ tapizado

group 22 - silvertex™



silvertex ice



silvertex macadamia



silvertex sandstone



silvertex taupe

group 22 - zander



zander brilliant white



zander parchment



zander ochre

group 22 - tatami



tatami 01



tatami 02



tatami 03

outdoor

Upholstery/ tapizado

group 23 - bora bora Crevin®



bora bora 99



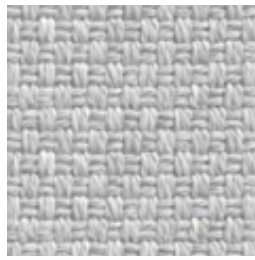
bora bora 08



bora bora 05



bora bora 11



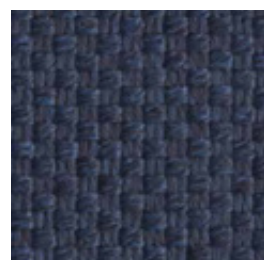
bora bora 50



bora bora 54

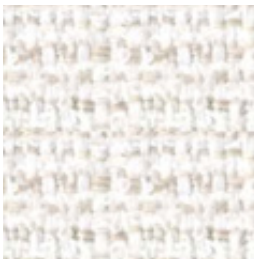


bora bora 42



bora bora 47

group 23 - nature



nature 01

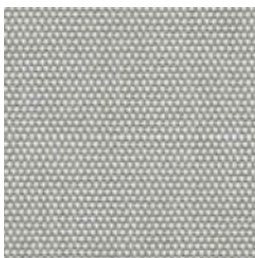


nature 02



nature 03

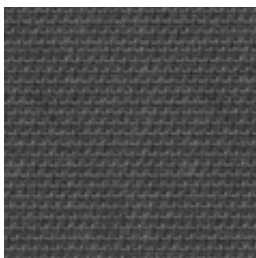
group 23 - sling Sunbrella®



sling sailing seagull



sling sailing space



sling logan graphite

outdoor

Plump XL Sofa / sofá XL

Studio expormim 2014

C864



Sofa made of high resistance aluminum tube and upholstered with foam of different densities. Possibility of customization through a wide variety of technical fabrics completely suitable for outdoor use. Upholstery*.

2 loose cushions 17.75"x 17.75" + 3 loose cushions 19.75"x 12.5" included.

Sofá fabricado en estructura de aluminio de alta resistencia y tapizado con espuma de diferentes densidades. Posibilidad de personalización mediante una amplia variedad de tejidos técnicos totalmente aptos para exteriores. Tapizado fijo*.

2 cojines decorativos de 45x45 cm + 3 cojines decorativos de 50x32 cm incluidos.



Shipment details

Qty	1 sofa (1 box)
Volume	2,25 m3 / 79.5 ft3
Gross weight	86 kg / 190 lb
Net weight	76 kg / 168 lb
Item dimensions (width x depth x height)	290 x 105 x 64 cm 114.25" x 41.25" x 25.25"
COM (1, 40 - 1,50 m / 54"-59")	upholstered: 13,5 m / 14.8 yd loose cushions: 2,5 m / 2.8 yd

Certifications

UNE EN 581-1:2017
UNE EN 581-2:2016
UNE EN 1022:2005

* With the aim of extending the service life of the products, Expormim highly recommends the use of protective covers during the periods when the furniture is not being used and exposed to the elements.

* Con la intención de alargar la vida útil del producto, Expormim aconseja el uso de fundas protectoras durante los periodos donde el mueble no vaya a ser utilizado de forma continua, quedando expuesto a la intemperie.

expormim

Expormim S.A.
Pol. Ind. Jaime I
46640 Moixent (Valencia) Spain
+34 962 295 144/5
export@expormim.com
www.expormim.com

Expormim USA LLC
(212) 204-8572
usa@expormim.com
www.expormim.com

1/5

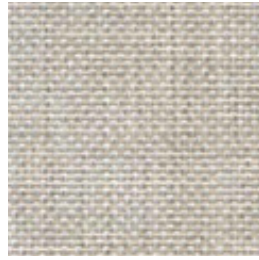
outdoor

Upholstery/ tapizado

group 21 - dolce Crevin®



dolce 07



dolce 16



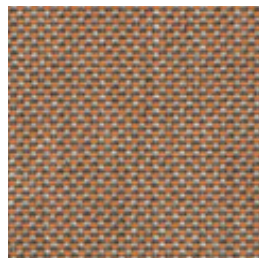
dolce 11



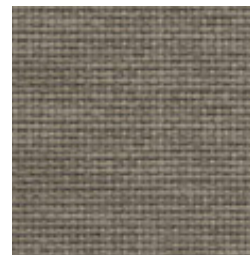
dolce 80



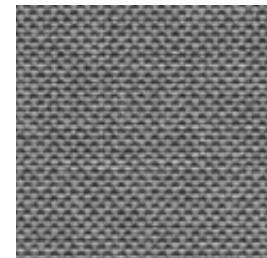
dolce 04



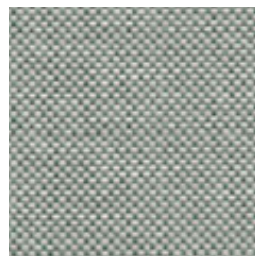
dolce 24



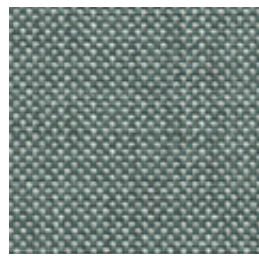
dolce 12



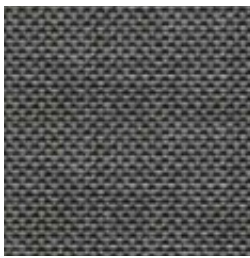
dolce 51



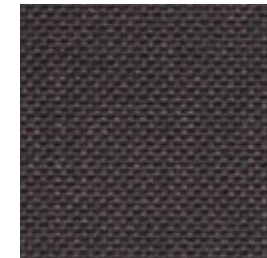
dolce 31



dolce 37



dolce 83



dolce 53

outdoor

Upholstery/ tapizado

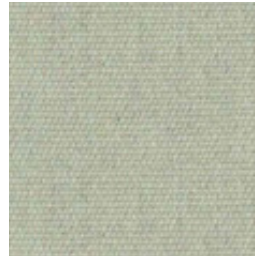
group 22 - heritage Sunbrella®



heritage papyrus



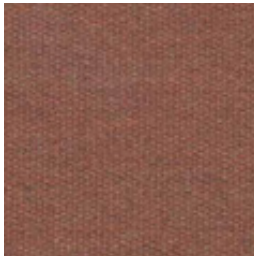
heritage ash



heritage moss



heritage leaf



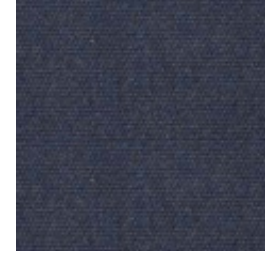
heritage rust



heritage scarlet



heritage slate



heritage indigo

group 22 - strada Crevin®



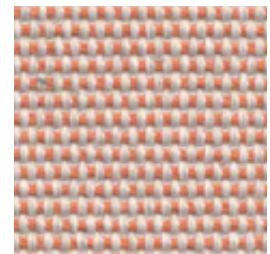
strada 07



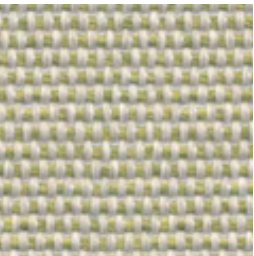
strada 16



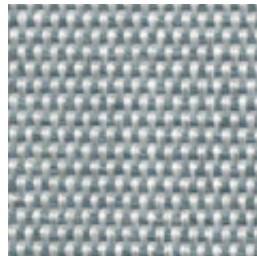
strada 75



strada 29



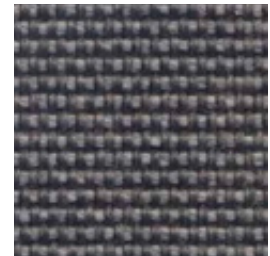
strada 32



strada 43



strada 51

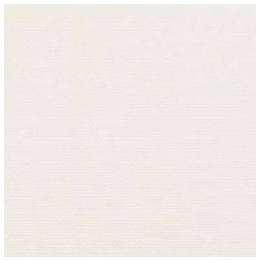


strada 83

outdoor

Upholstery/ tapizado

group 22 - silvertex™



silvertex ice



silvertex macadamia



silvertex sandstone



silvertex taupe

group 22 - zander



zander brilliant white

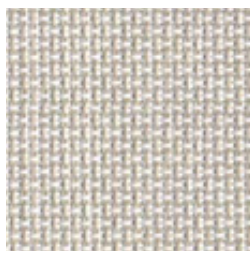


zander parchment

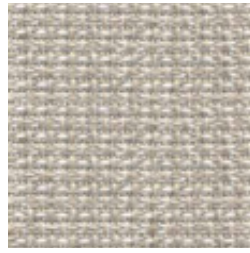


zander ochre

group 22 - tatami



tatami 01



tatami 02



tatami 03

outdoor

Upholstery/ tapizado

group 23 - bora bora Crevin®



bora bora 99



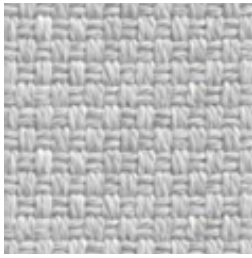
bora bora 08



bora bora 05



bora bora 11



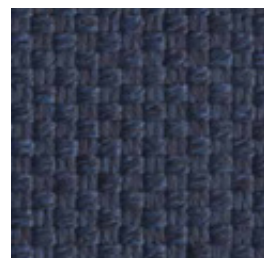
bora bora 50



bora bora 54

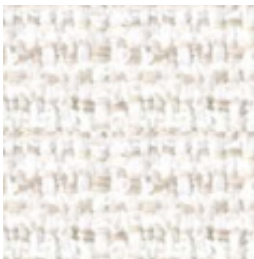


bora bora 42



bora bora 47

group 23 - nature



nature 01

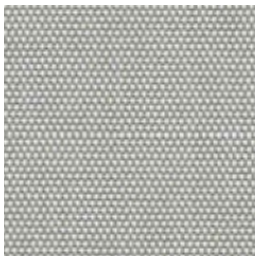


nature 02



nature 03

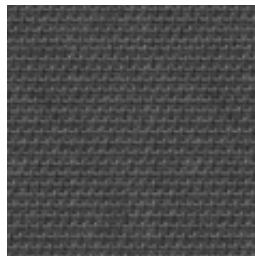
group 23 - sling Sunbrella®



sling sailing seagull



sling sailing space



sling logan graphite

outdoor

Plump

Short side module / módulo lateral corto

Studio expormim 2014

C869



Module made of high resistance aluminum tube and upholstered with foam of different densities. Possibility of customization through a wide variety of technical fabrics completely suitable for outdoor use. Upholstery*.

1 loose cushion 17.75"x 17.75" included.

Módulo fabricado en estructura de aluminio de alta resistencia y tapizado con espuma de diferentes densidades. Posibilidad de personalización mediante una amplia variedad de tejidos técnicos totalmente aptos para exteriores. Tapizado fijo*.

1 cojín decorativo de 45x45 cm incluido.

Shipment details

Qty	1 module (1 box)
Volume	0,83 m3 / 29.5 ft3
Gross weight	40 kg / 88 lb
Net weight	35 kg / 77 lb
Item dimensions (width x depth x height)	105 x 105 x 64 cm 41.25" x 41.25" x 25.25"
COM (1, 40 - 1,50 m / 54"-59")	upholstered: 7,6 m / 8.3 yd loose cushions: 0,5 m / 0.6 yd

Certifications

UNE EN 581-1:2017
UNE EN 581-2:2016
UNE EN 1022:2005

* With the aim of extending the service life of the products, Expormim highly recommends the use of protective covers during the periods when the furniture is not being used and exposed to the elements.

* Con la intención de alargar la vida útil del producto, Expormim aconseja el uso de fundas protectoras durante los periodos donde el mueble no vaya a ser utilizado de forma continua, quedando expuesto a la intemperie.

expormim

Expormim S.A.
Pol. Ind. Jaime I
46640 Moixent (Valencia) Spain
+34 962 295 144/5
export@expormim.com
www.expormim.com

Expormim USA LLC
(212) 204-8572
usa@expormim.com
www.expormim.com

1/5

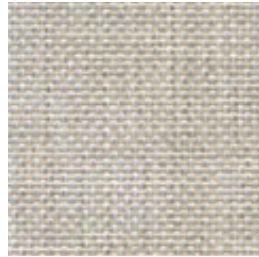
outdoor

Upholstery/ tapizado

group 21 - dolce Crevin®



dolce 07



dolce 16



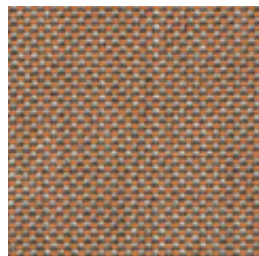
dolce 11



dolce 80



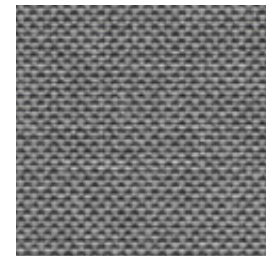
dolce 04



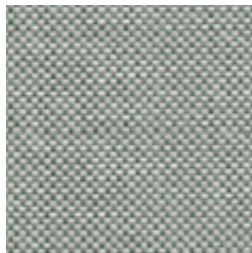
dolce 24



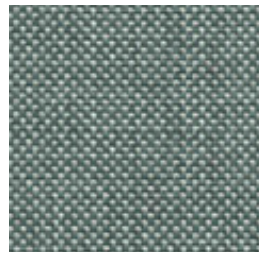
dolce 12



dolce 51



dolce 31



dolce 37



dolce 83



dolce 53

expormim

Expormim S.A.
Pol. Ind. Jaime I
46640 Moixent (Valencia) Spain
+34 962 295 144/5
export@expormim.com
www.expormim.com

Expormim USA LLC
(212) 204-8572
usa@expormim.com
www.expormim.com

2/5

outdoor

Upholstery/ tapizado

group 22 - heritage Sunbrella®



heritage papyrus



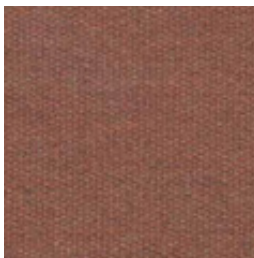
heritage ash



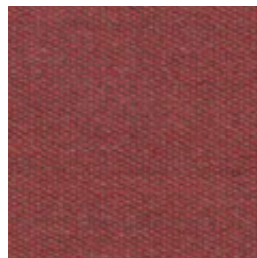
heritage moss



heritage leaf



heritage rust



heritage scarlet



heritage slate



heritage indigo

group 22 - strada Crevin®



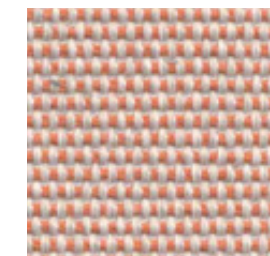
strada 07



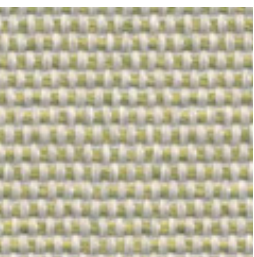
strada 16



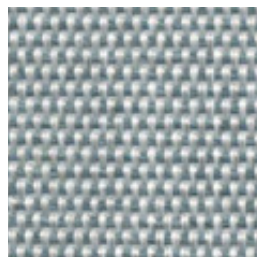
strada 75



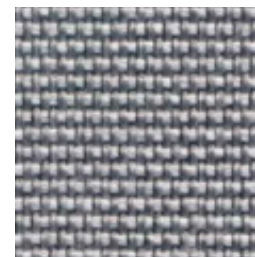
strada 29



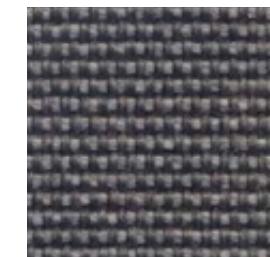
strada 32



strada 43



strada 51

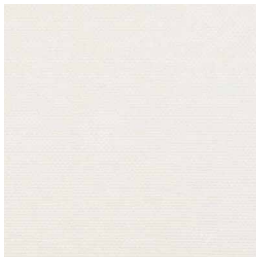


strada 83

outdoor

Upholstery/ tapizado

group 22 - silvertex™



silvertex ice



silvertex macadamia



silvertex sandstone



silvertex taupe

group 22 - zander



zander brilliant white



zander parchment

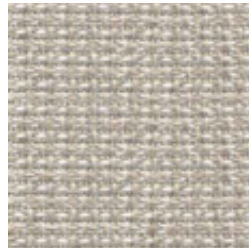


zander ochre

group 22 - tatami



tatami 01



tatami 02



tatami 03

outdoor

Upholstery/ tapizado

group 23 - bora bora Crevin®



bora bora 99



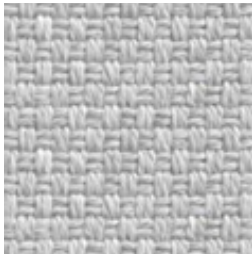
bora bora 08



bora bora 05



bora bora 11



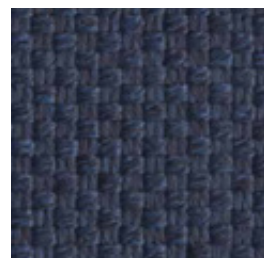
bora bora 50



bora bora 54

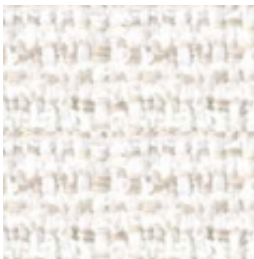


bora bora 42



bora bora 47

group 23 - nature



nature 01

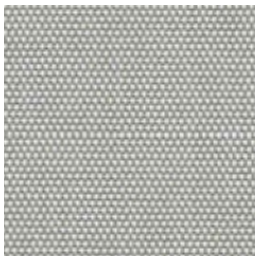


nature 02



nature 03

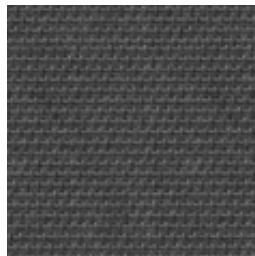
group 23 - sling Sunbrella®



sling sailing seagull



sling sailing space



sling logan graphite

outdoor

Plump

Left side module / módulo lateral izq.

Studio expormim 2014

C870

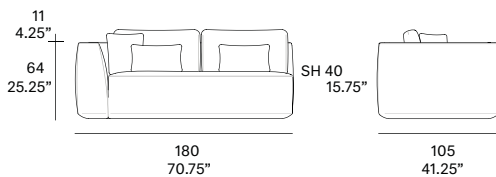


Module made of high resistance aluminum tube and upholstered with foam of different densities. Possibility of customization through a wide variety of technical fabrics completely suitable for outdoor use. Upholstery*.

1 loose cushion 17.75"x 17.75" + 2 loose cushions 19.75"x 12.5" included.

Módulo fabricado en estructura de aluminio de alta resistencia y tapizado con espuma de diferentes densidades. Posibilidad de personalización mediante una amplia variedad de tejidos técnicos totalmente aptos para exteriores. Tapizado fijo*.

1 cojín decorativo de 45x45 cm + 2 cojines decorativos de 50x32 cm incluidos.



Shipment details

Qty	1 module (1 box)
Volume	1,38 m3 / 49 ft3
Gross weight	51 kg / 112 lb
Net weight	43 kg / 95 lb
Item dimensions (width x depth x height)	180 x 105 x 64 cm 70.75" x 41.25" x 25.25"
COM (1, 40 - 1,50 m / 54"-59")	upholstered: 11 m / 12 yd loose cushions: 1,5 m / 1.7 yd

Certifications

UNE EN 581-1:2017
UNE EN 581-2:2016
UNE EN 1022:2005

* With the aim of extending the service life of the products, Expormim highly recommends the use of protective covers during the periods when the furniture is not being used and exposed to the elements.

* Con la intención de alargar la vida útil del producto, Expormim aconseja el uso de fundas protectoras durante los periodos donde el mueble no vaya a ser utilizado de forma continua, quedando expuesto a la intemperie.

expormim

Expormim S.A.
Pol. Ind. Jaime I
46640 Moixent (Valencia) Spain
+34 962 295 144/5
export@expormim.com
www.expormim.com

Expormim USA LLC
(212) 204-8572
usa@expormim.com
www.expormim.com

1/5

outdoor

Upholstery/ tapizado

group 21 - dolce Crevin®



dolce 07



dolce 16



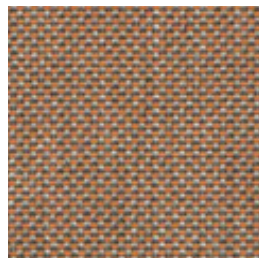
dolce 11



dolce 80



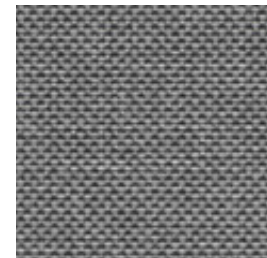
dolce 04



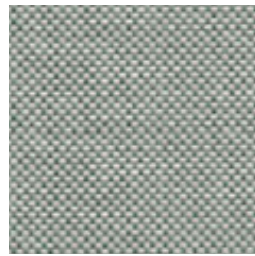
dolce 24



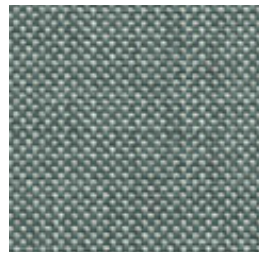
dolce 12



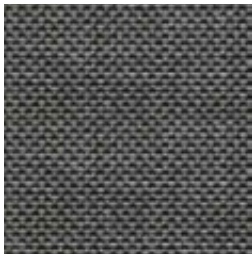
dolce 51



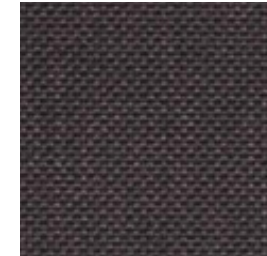
dolce 31



dolce 37



dolce 83



dolce 53

outdoor

Upholstery/ tapizado

group 22 - heritage Sunbrella®



heritage papyrus



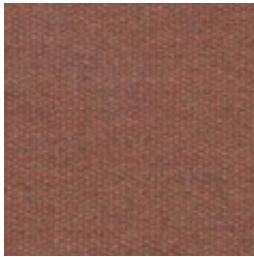
heritage ash



heritage moss



heritage leaf



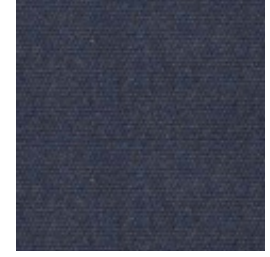
heritage rust



heritage scarlet



heritage slate



heritage indigo

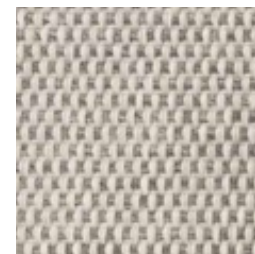
group 22 - strada Crevin®



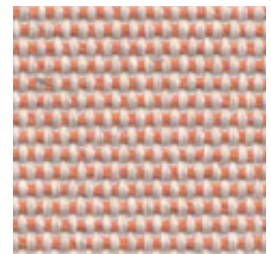
strada 07



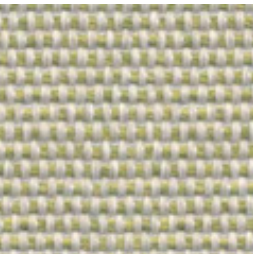
strada 16



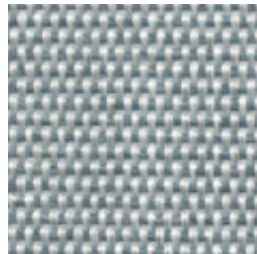
strada 75



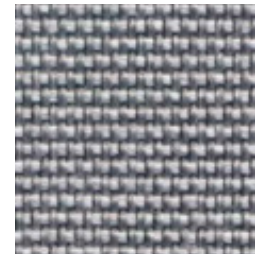
strada 29



strada 32



strada 43



strada 51

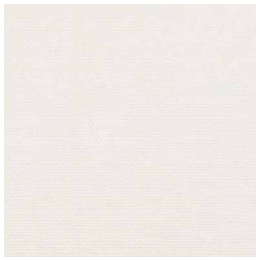


strada 83

outdoor

Upholstery / tapizado

group 22 - silvertex™



silvertex ice



silvertex macadamia



silvertex sandstone



silvertex taupe

group 22 - zander



zander brilliant white



zander parchment

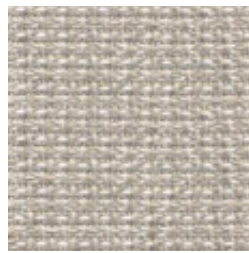


zander ochre

group 22 - tatami



tatami 01



tatami 02



tatami 03

outdoor

Upholstery / tapizado

group 23 - bora bora Crevin®



bora bora 99



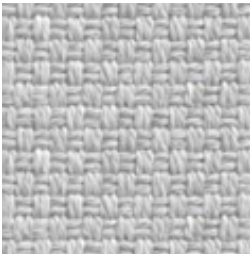
bora bora 08



bora bora 05



bora bora 11



bora bora 50



bora bora 54

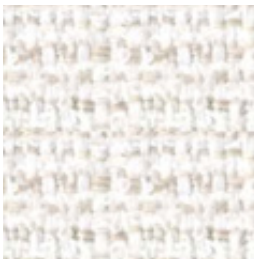


bora bora 42



bora bora 47

group 23 - nature



nature 01

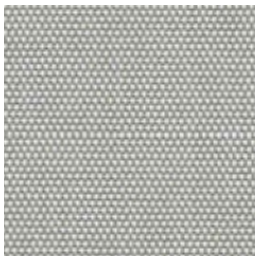


nature 02



nature 03

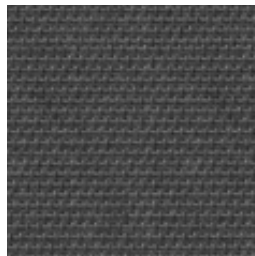
group 23 - sling Sunbrella®



sling sailing seagull



sling sailing space



sling logan graphite

outdoor

Plump Right side module / módulo lateral dcho.

Studio expormim 2014

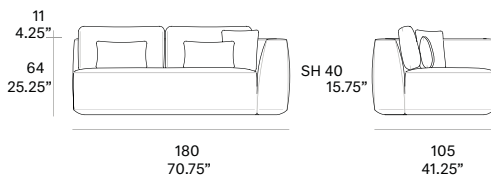
C871



Module made of high resistance aluminum tube and upholstered with foam of different densities. Possibility of customization through a wide variety of technical fabrics completely suitable for outdoor use. Upholstery*.

1 loose cushion 17.75"x 17.75" + 2 loose cushions 19.75"x 12.5" included.

Módulo fabricado en estructura de aluminio de alta resistencia y tapizado con espuma de diferentes densidades. Posibilidad de personalización mediante una amplia variedad de tejidos técnicos totalmente aptos para exteriores. Tapizado fijo*. 1 cojín decorativo de 45x45 cm + 2 cojines decorativos de 50x32 cm incluidos.



Shipment details

Qty	1 module (1 box)
Volume	1,38 m3 / 49 ft3
Gross weight	51 kg / 112 lb
Net weight	43 kg / 95 lb
Item dimensions (width x depth x height)	180 x 105 x 64 cm 70.75" x 41.25" x 25.25"
COM (1, 40 - 1,50 m / 54"-59")	upholstered: 11 m / 12 yd loose cushions: 1,5 m / 1.7 yd

Certifications

UNE EN 581-1:2017
UNE EN 581-2:2016
UNE EN 1022:2005

* With the aim of extending the service life of the products, Expormim highly recommends the use of protective covers during the periods when the furniture is not being used and exposed to the elements.

* Con la intención de alargar la vida útil del producto, Expormim aconseja el uso de fundas protectoras durante los periodos donde el mueble no vaya a ser utilizado de forma continua, quedando expuesto a la intemperie.

expormim

Expormim S.A.
Pol. Ind. Jaime I
46640 Moixent (Valencia) Spain
+34 962 295 144/5
export@expormim.com
www.expormim.com

Expormim USA LLC
(212) 204-8572
usa@expormim.com
www.expormim.com

1/5

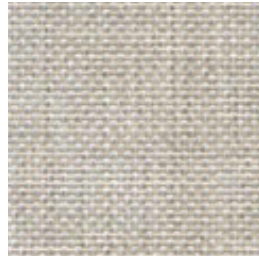
outdoor

Upholstery/ tapizado

group 21 - dolce Crevin®



dolce 07



dolce 16



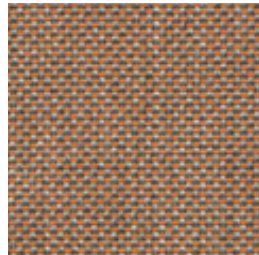
dolce 11



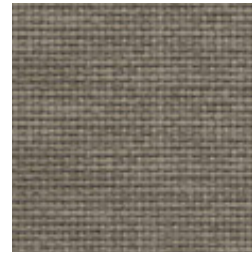
dolce 80



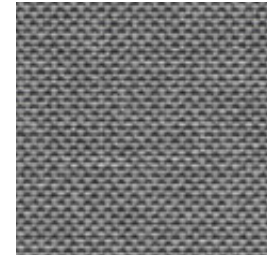
dolce 04



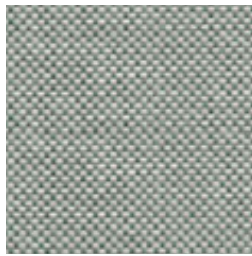
dolce 24



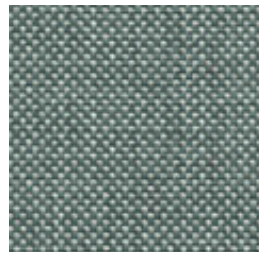
dolce 12



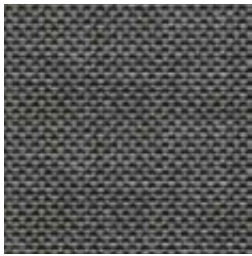
dolce 51



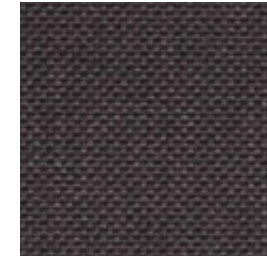
dolce 31



dolce 37



dolce 83



dolce 53

outdoor

Upholstery/ tapizado

group 22 - heritage Sunbrella®



heritage papyrus



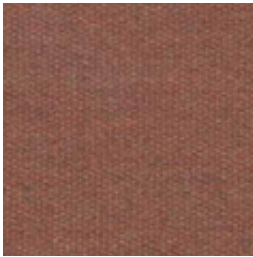
heritage ash



heritage moss



heritage leaf



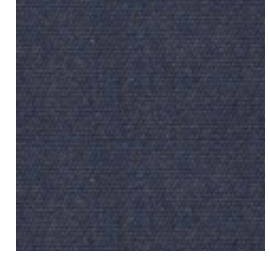
heritage rust



heritage scarlet



heritage slate



heritage indigo

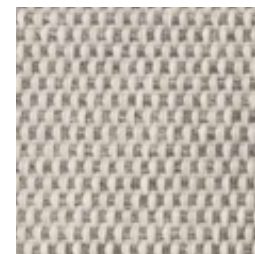
group 22 - strada Crevin®



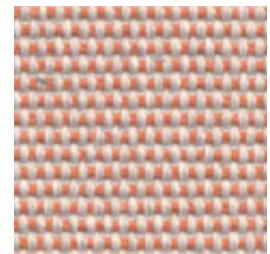
strada 07



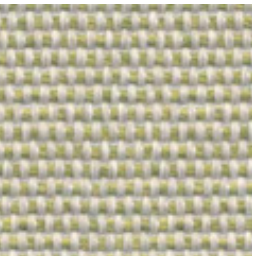
strada 16



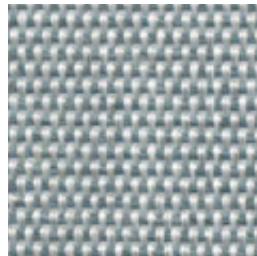
strada 75



strada 29



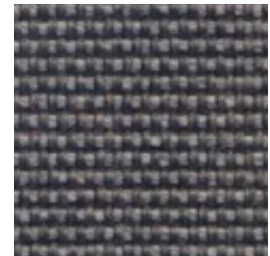
strada 32



strada 43



strada 51

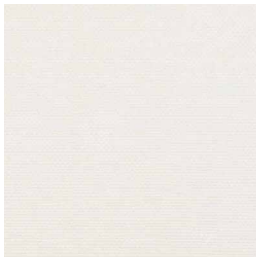


strada 83

outdoor

Upholstery/ tapizado

group 22 - silvertex™



silvertex ice



silvertex macadamia



silvertex sandstone



silvertex taupe

group 22 - zander



zander brilliant white



zander parchment

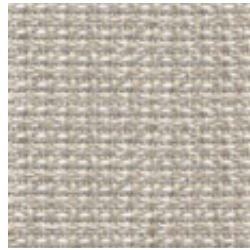


zander ochre

group 22 - tatami



tatami 01



tatami 02



tatami 03

outdoor

Upholstery / tapizado

group 23 - bora bora Crevin®



bora bora 99



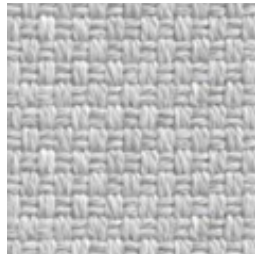
bora bora 08



bora bora 05



bora bora 11



bora bora 50



bora bora 54

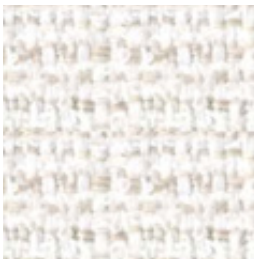


bora bora 42



bora bora 47

group 23 - nature



nature 01

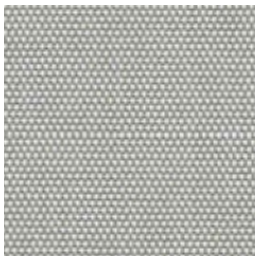


nature 02



nature 03

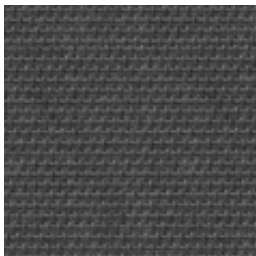
group 23 - sling Sunbrella®



sling sailing seagull



sling sailing space



sling logan graphite

outdoor

Plump Central module / módulo central

Studio expormim 2014

C872

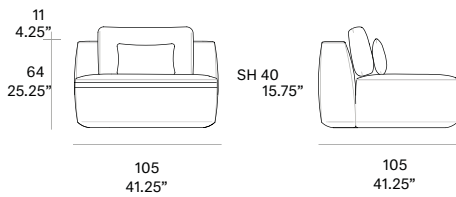


Module made of high resistance aluminum tube and upholstered with foam of different densities. Possibility of customization through a wide variety of technical fabrics completely suitable for outdoor use. Upholstery*.

1 loose cushion 19.75"x 12.5" included.

Módulo fabricado en estructura de aluminio de alta resistencia y tapizado con espuma de diferentes densidades. Posibilidad de personalización mediante una amplia variedad de tejidos técnicos totalmente aptos para exteriores. Tapizado fijo*.

1 cojín decorativo de 50x32 cm incluido.



Shipment details

Qty	1 module (1 box)
Volume	0,83 m3 / 29.3 ft3
Gross weight	38 kg / 84 lb
Net weight	33 kg / 73 lb
Item dimensions (width x depth x height)	105 x 105 x 64 cm 41.25" x 41.25" x 25.25"
COM (1, 40 - 1,50 m / 54"-59")	upholstered: 5,5 m / 6 yd loose cushions: 0,5 m / 0.6 yd

Certifications

UNE EN 581-1:2017
UNE EN 581-2:2016
UNE EN 1022:2005

* With the aim of extending the service life of the products, Expormim highly recommends the use of protective covers during the periods when the furniture is not being used and exposed to the elements.

* Con la intención de alargar la vida útil del producto, Expormim aconseja el uso de fundas protectoras durante los periodos donde el mueble no vaya a ser utilizado de forma continua, quedando expuesto a la intemperie.

expormim

Expormim S.A.
Pol. Ind. Jaime I
46640 Moixent (Valencia) Spain
+34 962 295 144/5
export@expormim.com
www.expormim.com

Expormim USA LLC
(212) 204-8572
usa@expormim.com
www.expormim.com

1/5

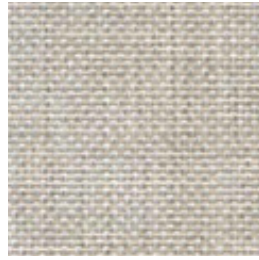
outdoor

Upholstery/ tapizado

group 21 - dolce Crevin®



dolce 07



dolce 16



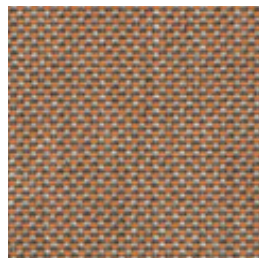
dolce 11



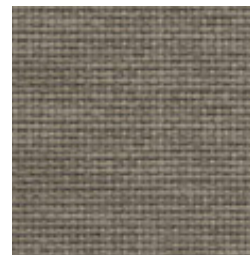
dolce 80



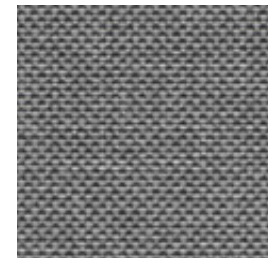
dolce 04



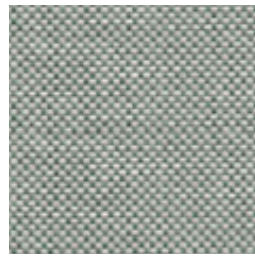
dolce 24



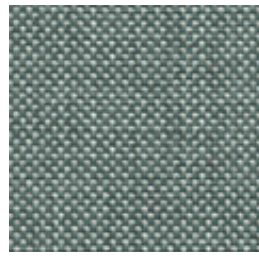
dolce 12



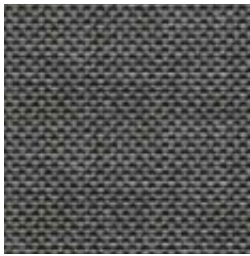
dolce 51



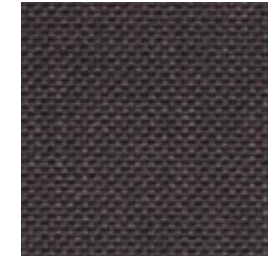
dolce 31



dolce 37



dolce 83



dolce 53

expormim

Expormim S.A.
Pol. Ind. Jaime I
46640 Moixent (Valencia) Spain
+34 962 295 144/5
export@expormim.com
www.expormim.com

Expormim USA LLC
(212) 204-8572
usa@expormim.com
www.expormim.com

2/5

outdoor

Upholstery/ tapizado

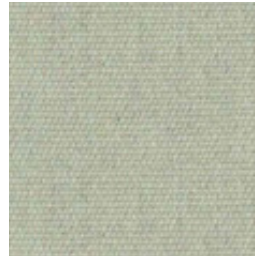
group 22 - heritage Sunbrella®



heritage papyrus



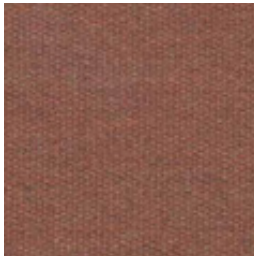
heritage ash



heritage moss



heritage leaf



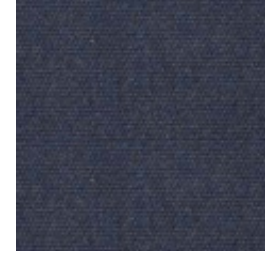
heritage rust



heritage scarlet



heritage slate



heritage indigo

group 22 - strada Crevin®



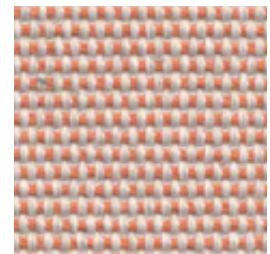
strada 07



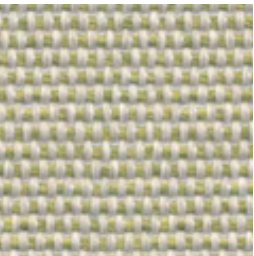
strada 16



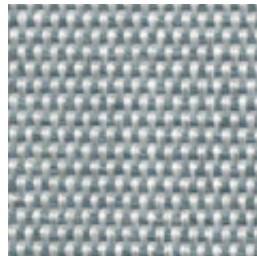
strada 75



strada 29



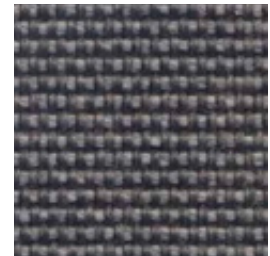
strada 32



strada 43



strada 51



strada 83

expormim

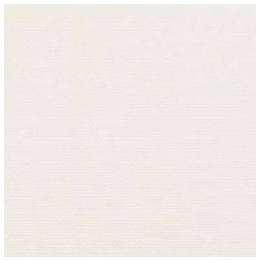
Expormim S.A.
Pol. Ind. Jaime I
46640 Moixent (Valencia) Spain
+34 962 295 144/5
export@expormim.com
www.expormim.com

Expormim USA LLC
(212) 204-8572
usa@expormim.com
www.expormim.com

outdoor

Upholstery/ tapizado

group 22 - silvertex™



silvertex ice



silvertex macadamia



silvertex sandstone



silvertex taupe

group 22 - zander



zander brilliant white



zander parchment

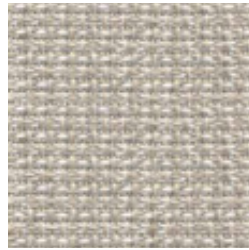


zander ochre

group 22 - tatami



tatami 01



tatami 02



tatami 03

outdoor

Upholstery / tapizado

group 23 - bora bora Crevin®



bora bora 99



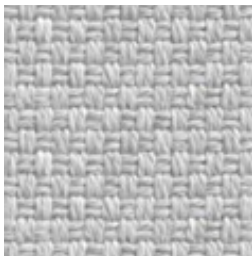
bora bora 08



bora bora 05



bora bora 11



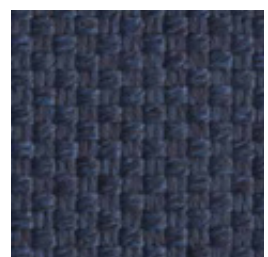
bora bora 50



bora bora 54



bora bora 42

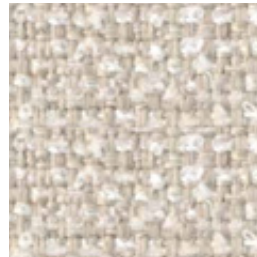


bora bora 47

group 23 - nature



nature 01

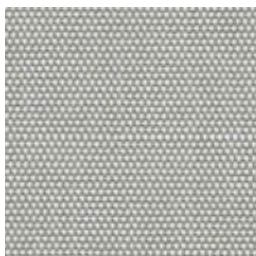


nature 02



nature 03

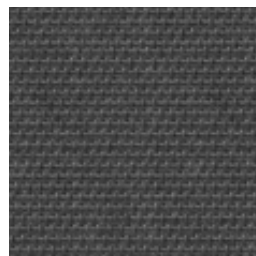
group 23 - sling Sunbrella®



sling sailing seagull



sling sailing space



sling logan graphite

outdoor

Plump

Left chaise longue module / módulo chaise longue izq.

Studio expormim 2014

C873

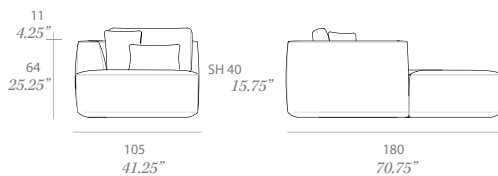


Chaise longue module made of high resistance aluminum tube and upholstered with foam of different densities. Possibility of customization through a wide variety of technical fabrics completely suitable for outdoor use. Upholstery*.

1 loose cushion 17.75"x 17.75" + 1 loose cushion 19.75"x 12.5" included.

Módulo chaise longue fabricado en estructura de aluminio de alta resistencia y tapizado con espuma de diferentes densidades. Posibilidad de personalización mediante una amplia variedad de tejidos técnicos totalmente aptos para exteriores. Tapizado fijo*.

1 cojín decorativo de 45x45 cm + 1 cojín decorativo de 50x32 cm incluidos.



Shipment details

Qty	1 module (1 box)
Volume	1,38 m3 / 49 ft3
Gross weight	48 kg / 106 lb
Net weight	40 kg / 88 lb
Item dimensions (width x depth x height)	105 x 180 x 64 cm 41.25" x 70.75" x 25.25"
COM (1, 40 - 1,50 m / 54"-59")	upholstered: 9 m / 9.9 yd loose cushions: 1 m / 1.1 yd

Certifications

UNE EN 581-1:2017
UNE EN 581-2:2016
UNE EN 1022:2005

* With the aim of extending the service life of the products, Expormim highly recommends the use of protective covers during the periods when the furniture is not being used and exposed to the elements.

* Con la intención de alargar la vida útil del producto, Expormim aconseja el uso de fundas protectoras durante los periodos donde el mueble no vaya a ser utilizado de forma continua, quedando expuesto a la intemperie.

expormim

Expormim S.A.
Pol. Ind. Jaime I
46640 Moixent (Valencia) Spain
+34 962 295 144/5
export@expormim.com
www.expormim.com

Expormim USA LLC
(212) 204-8572
usa@expormim.com
www.expormim.com

1/5

outdoor

Upholstery/ tapizado

group 21 - dolce Crevin®



dolce 07



dolce 16



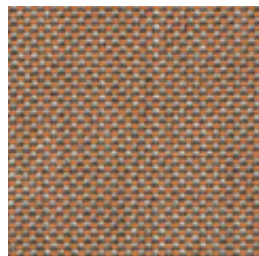
dolce 11



dolce 80



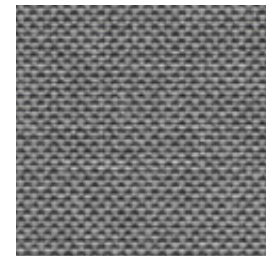
dolce 04



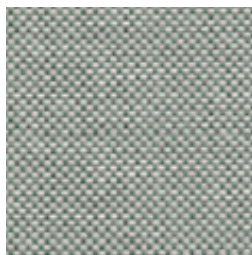
dolce 24



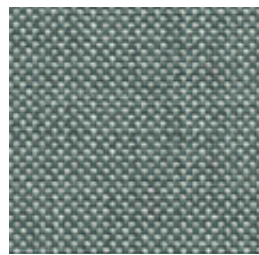
dolce 12



dolce 51



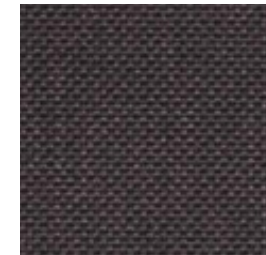
dolce 31



dolce 37



dolce 83



dolce 53

outdoor

Upholstery/ tapizado

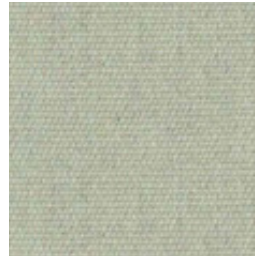
group 22 - heritage Sunbrella®



heritage papyrus



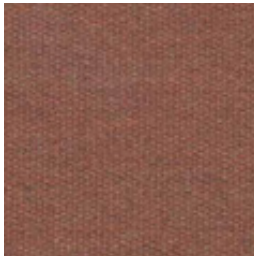
heritage ash



heritage moss



heritage leaf



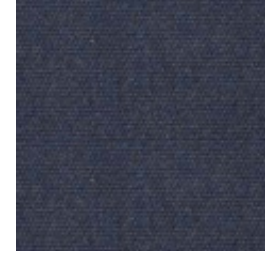
heritage rust



heritage scarlet



heritage slate



heritage indigo

group 22 - strada Crevin®



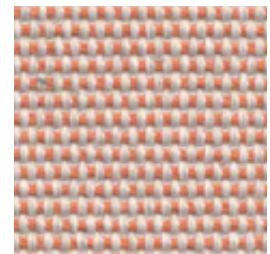
strada 07



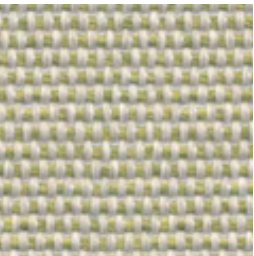
strada 16



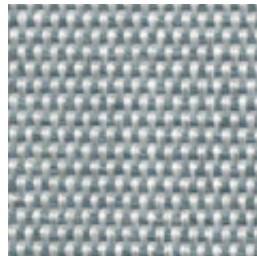
strada 75



strada 29



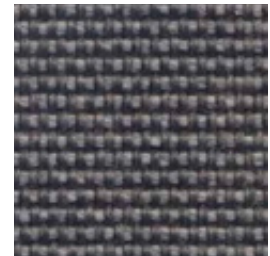
strada 32



strada 43



strada 51

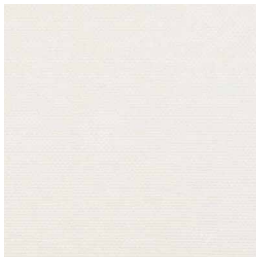


strada 83

outdoor

Upholstery/ tapizado

group 22 - silvertex™



silvertex ice



silvertex macadamia



silvertex sandstone



silvertex taupe

group 22 - zander



zander brilliant white



zander parchment

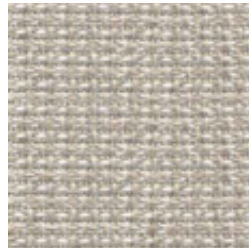


zander ochre

group 22 - tatami



tatami 01



tatami 02



tatami 03

outdoor

Upholstery / tapizado

group 23 - bora bora Crevin®



bora bora 99



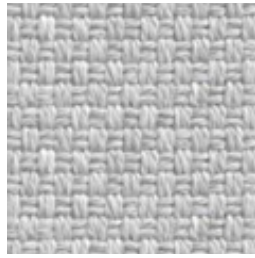
bora bora 08



bora bora 05



bora bora 11



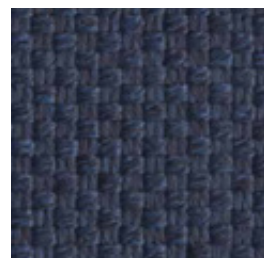
bora bora 50



bora bora 54

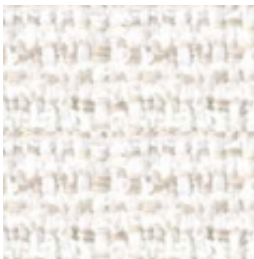


bora bora 42



bora bora 47

group 23 - nature



nature 01

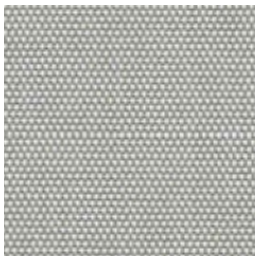


nature 02



nature 03

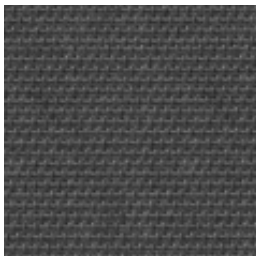
group 23 - sling Sunbrella®



sling sailing seagull



sling sailing space



sling logan graphite

outdoor

Plump

Right chaise longue module / módulo chaise longue dcho.

Studio expormim 2014

C874

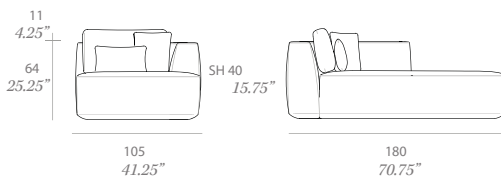


Chaise longue module made of high resistance aluminum tube and upholstered with foam of different densities. Possibility of customization through a wide variety of technical fabrics completely suitable for outdoor use. Upholstery*.

1 loose cushion 17.75"x 17.75" + 1 loose cushion 19.75"x 12.5" included.

Módulo chaise longue fabricado en estructura de aluminio de alta resistencia y tapizado con espuma de diferentes densidades. Posibilidad de personalización mediante una amplia variedad de tejidos técnicos totalmente aptos para exteriores. Tapizado fijo*.

1 cojín decorativo de 45x45 cm + 1 cojín decorativo de 50x32 cm incluidos.



Shipment details

Qty	1 module (1 box)
Volume	1,38 m3 / 49 ft3
Gross weight	48 kg / 106 lb
Net weight	40 kg / 88 lb
Item dimensions (width x depth x height)	105 x 180 x 64 cm 41.25" x 70.75" x 25.25"
COM (1, 40 - 1,50 m / 54"-59")	upholstered: 9 m / 9.9 yd loose cushions: 1 m / 1.1 yd

Certifications

UNE EN 581-1:2017
UNE EN 581-2:2016
UNE EN 1022:2005

* With the aim of extending the service life of the products, Expormim highly recommends the use of protective covers during the periods when the furniture is not being used and exposed to the elements.

* Con la intención de alargar la vida útil del producto, Expormim aconseja el uso de fundas protectoras durante los periodos donde el mueble no vaya a ser utilizado de forma continua, quedando expuesto a la intemperie.

expormim

Expormim S.A.
Pol. Ind. Jaime I
46640 Moixent (Valencia) Spain
+34 962 295 144/5
export@expormim.com
www.expormim.com

Expormim USA LLC
(212) 204-8572
usa@expormim.com
www.expormim.com

1/5

outdoor

Upholstery/ tapizado

group 21 - dolce Crevin®



dolce 07



dolce 16



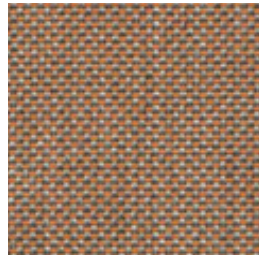
dolce 11



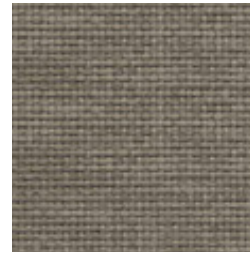
dolce 80



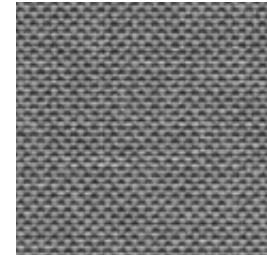
dolce 04



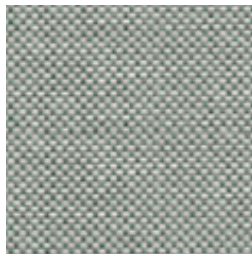
dolce 24



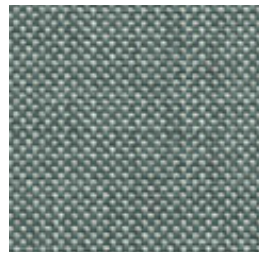
dolce 12



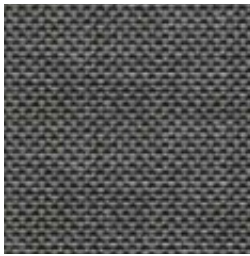
dolce 51



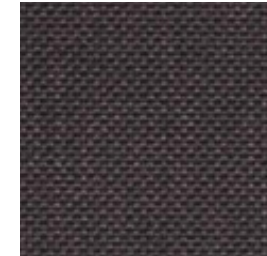
dolce 31



dolce 37



dolce 83



dolce 53

outdoor

Upholstery/ tapizado

group 22 - heritage Sunbrella®



heritage papyrus



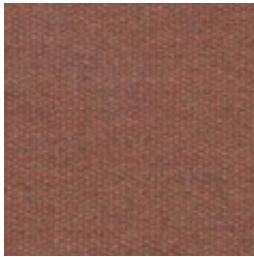
heritage ash



heritage moss



heritage leaf



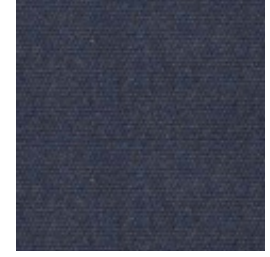
heritage rust



heritage scarlet



heritage slate



heritage indigo

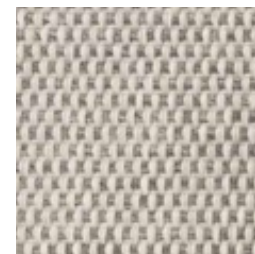
group 22 - strada Crevin®



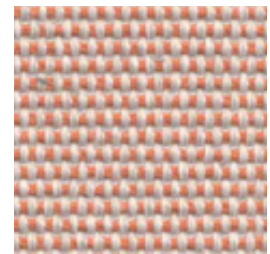
strada 07



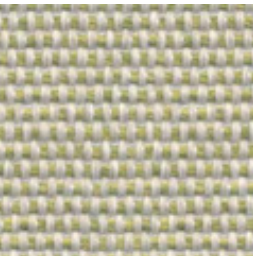
strada 16



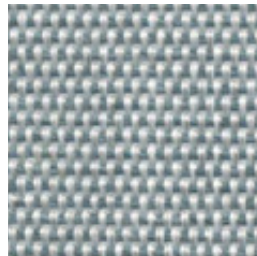
strada 75



strada 29



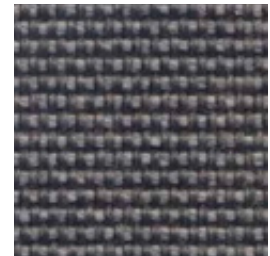
strada 32



strada 43



strada 51

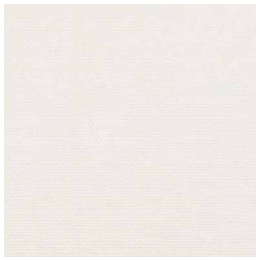


strada 83

outdoor

Upholstery/ tapizado

group 22 - silvertex™



silvertex ice



silvertex macadamia



silvertex sandstone



silvertex taupe

group 22 - zander



zander brilliant white



zander parchment



zander ochre

group 22 - tatami



tatami 01



tatami 02



tatami 03

outdoor

Upholstery / tapizado

group 23 - bora bora Crevin®



bora bora 99



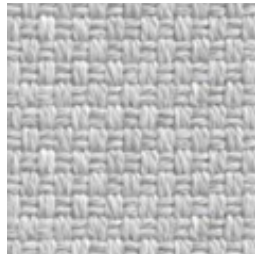
bora bora 08



bora bora 05



bora bora 11



bora bora 50



bora bora 54

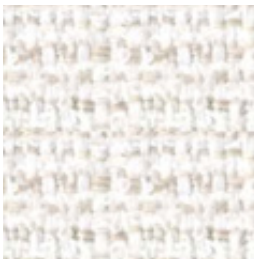


bora bora 42



bora bora 47

group 23 - nature



nature 01

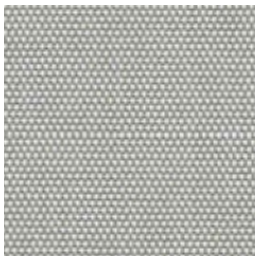


nature 02



nature 03

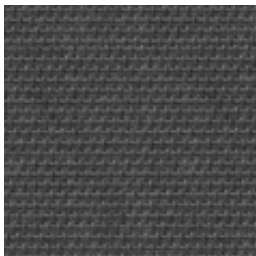
group 23 - sling Sunbrella®



sling sailing seagull



sling sailing space



sling logan graphite

outdoor

Plump

Left island module / módulo isla izq.

Studio expormim 2014

C876

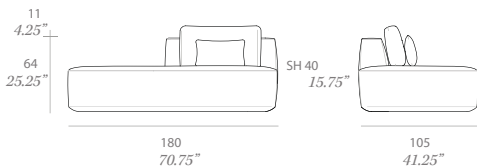


Module made of high resistance aluminum tube and upholstered with foam of different densities. Possibility of customization through a wide variety of technical fabrics completely suitable for outdoor use. Upholstery*.
1 loose cushion 19.75"x 12.5" included.

Módulo fabricado en estructura de aluminio de alta resistencia y tapizado con espuma de diferentes densidades. Posibilidad de personalización mediante una amplia variedad de tejidos técnicos totalmente aptos para exteriores. Tapizado fijo*.
1 cojines decorativo de 50x32 cm incluido.

Shipment details

Qty	1 module (1 box)
Volume	1,38 m3 / 49 ft3
Gross weight	46 kg / 101 lb
Net weight	38 kg / 84 lb
Item dimensions (width x depth x height)	180 x 105 x 64 cm 70.75" x 41.25" x 25.25"
COM (1, 40 - 1,50 m / 54"-59")	upholstered: 9 m / 9.9 yd loose cushions: 0,5 m / 0.6 yd



Certifications

UNE EN 581-1:2017
UNE EN 581-2:2016
UNE EN 1022:2005

* With the aim of extending the service life of the products, Expormim highly recommends the use of protective covers during the periods when the furniture is not being used and exposed to the elements.

* Con la intención de alargar la vida útil del producto, Expormim aconseja el uso de fundas protectoras durante los periodos donde el mueble no vaya a ser utilizado de forma continua, quedando expuesto a la intemperie.

expormim

Expormim S.A.
Pol. Ind. Jaime I
46640 Moixent (Valencia) Spain
+34 962 295 144/5
export@expormim.com
www.expormim.com

Expormim USA LLC
(212) 204-8572
usa@expormim.com
www.expormim.com

1/5

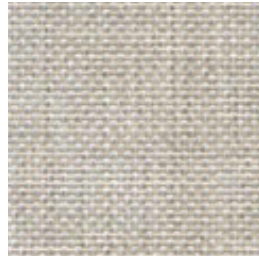
outdoor

Upholstery/ tapizado

group 21 - dolce Crevin®



dolce 07



dolce 16



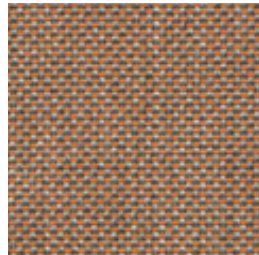
dolce 11



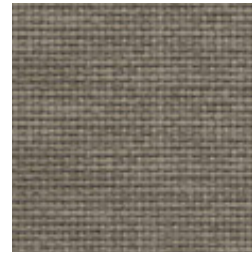
dolce 80



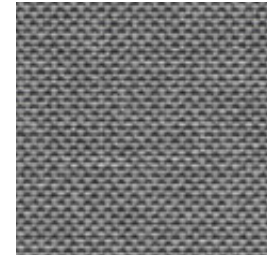
dolce 04



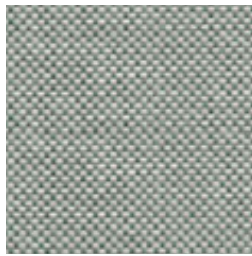
dolce 24



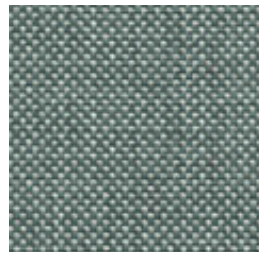
dolce 12



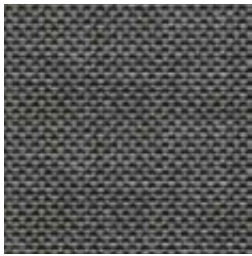
dolce 51



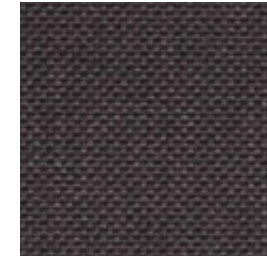
dolce 31



dolce 37



dolce 83



dolce 53

outdoor

Upholstery/ tapizado

group 22 - heritage Sunbrella®



heritage papyrus



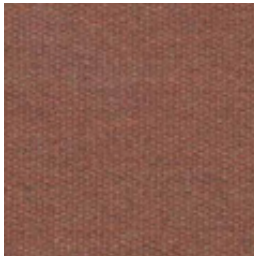
heritage ash



heritage moss



heritage leaf



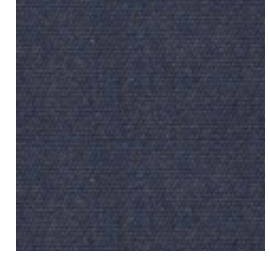
heritage rust



heritage scarlet



heritage slate



heritage indigo

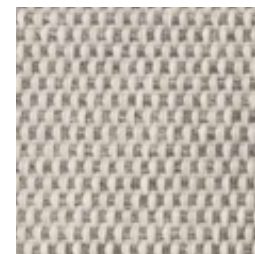
group 22 - strada Crevin®



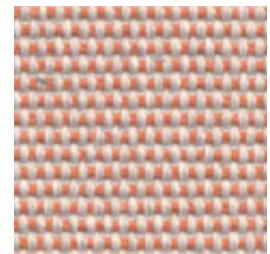
strada 07



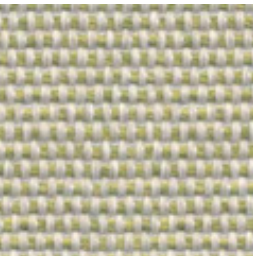
strada 16



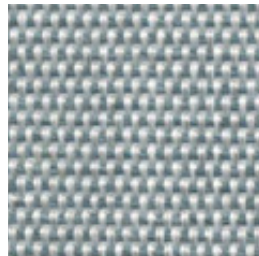
strada 75



strada 29



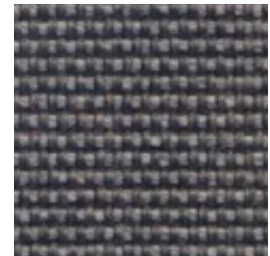
strada 32



strada 43



strada 51

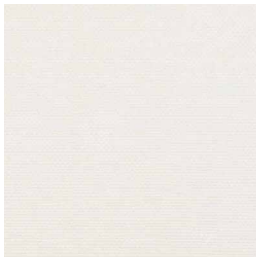


strada 83

outdoor

Upholstery/ tapizado

group 22 - silvertex™



silvertex ice



silvertex macadamia



silvertex sandstone



silvertex taupe

group 22 - zander



zander brilliant white



zander parchment

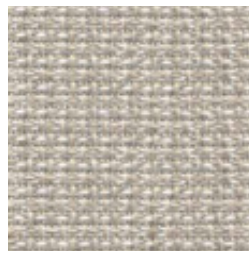


zander ochre

group 22 - tatami



tatami 01



tatami 02



tatami 03

outdoor

Upholstery / tapizado

group 23 - bora bora Crevin®



bora bora 99



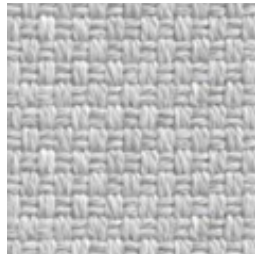
bora bora 08



bora bora 05



bora bora 11



bora bora 50



bora bora 54

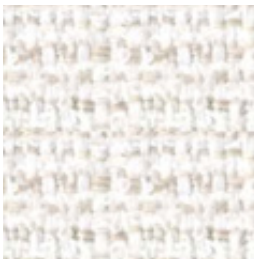


bora bora 42



bora bora 47

group 23 - nature



nature 01

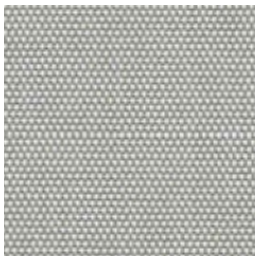


nature 02



nature 03

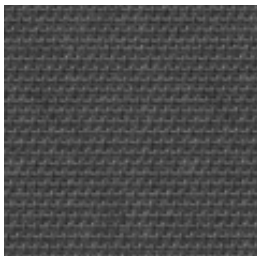
group 23 - sling Sunbrella®



sling sailing seagull



sling sailing space



sling logan graphite

outdoor

Plump Right island module / módulo isla dcho.

Studio expormim 2014

C877



Module made of high resistance aluminum tube and upholstered with foam of different densities. Possibility of customization through a wide variety of technical fabrics completely suitable for outdoor use. Upholstery*.

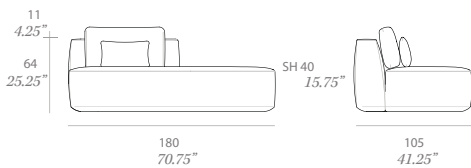
1 loose cushion 19.75"x 12.5" included.

Módulo fabricado en estructura de aluminio de alta resistencia y tapizado con espuma de diferentes densidades. Posibilidad de personalización mediante una amplia variedad de tejidos técnicos totalmente aptos para exteriores. Tapizado fijo*.

1 cojín decorativo de 50x32 cm incluido.

Shipment details

Qty	1 module (1 box)
Volume	1,38 m3 / 49 ft3
Gross weight	46 kg / 101 lb
Net weight	38 kg / 84 lb
Item dimensions (width x depth x height)	180 x 105 x 64 cm 70.75" x 41.25" x 25.25"
COM (1, 40 - 1,50 m / 54"-59")	upholstered: 9 m / 9.9 yd loose cushions: 0,5 m / 0.6 yd



Certifications

UNE EN 581-1:2017

UNE EN 581-2:2016

UNE EN 1022:2005

* With the aim of extending the service life of the products, Expormim highly recommends the use of protective covers during the periods when the furniture is not being used and exposed to the elements.

* Con la intención de alargar la vida útil del producto, Expormim aconseja el uso de fundas protectoras durante los periodos donde el mueble no vaya a ser utilizado de forma continua, quedando expuesto a la intemperie.

expormim

Expormim S.A.
Pol. Ind. Jaime I
46640 Moixent (Valencia) Spain
+34 962 295 144/5
export@expormim.com
www.expormim.com

Expormim USA LLC
(212) 204-8572
usa@expormim.com
www.expormim.com

1/5

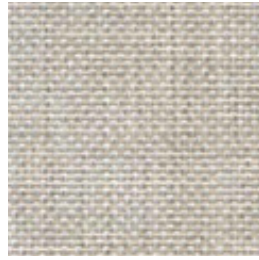
outdoor

Upholstery/ tapizado

group 21 - dolce Crevin®



dolce 07



dolce 16



dolce 11



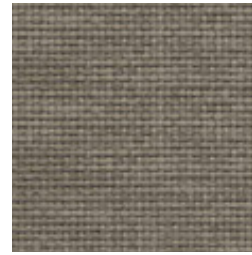
dolce 80



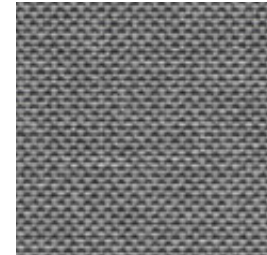
dolce 04



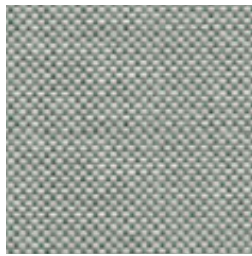
dolce 24



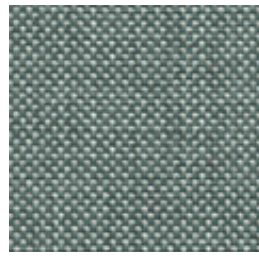
dolce 12



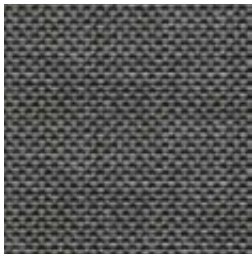
dolce 51



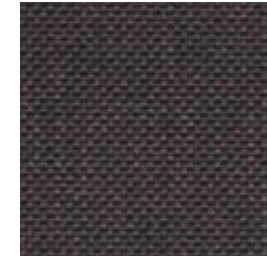
dolce 31



dolce 37



dolce 83



dolce 53

outdoor

Upholstery/ tapizado

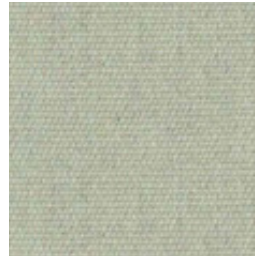
group 22 - heritage Sunbrella®



heritage papyrus



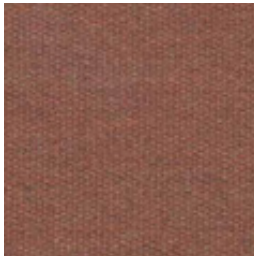
heritage ash



heritage moss



heritage leaf



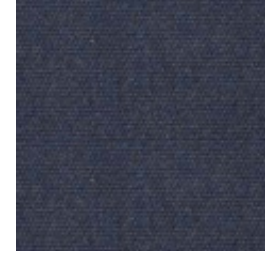
heritage rust



heritage scarlet



heritage slate



heritage indigo

group 22 - strada Crevin®



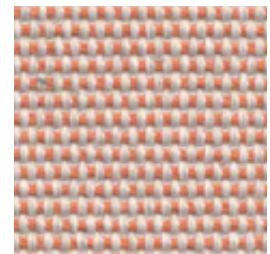
strada 07



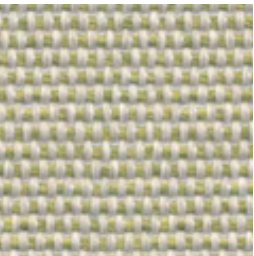
strada 16



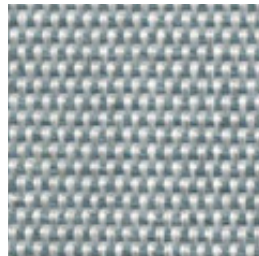
strada 75



strada 29



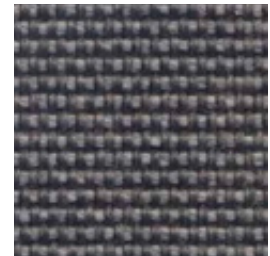
strada 32



strada 43



strada 51

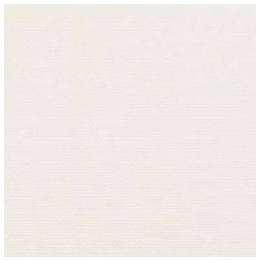


strada 83

outdoor

Upholstery/ tapizado

group 22 - silvertex™



silvertex ice



silvertex macadamia



silvertex sandstone



silvertex taupe

group 22 - zander



zander brilliant white



zander parchment

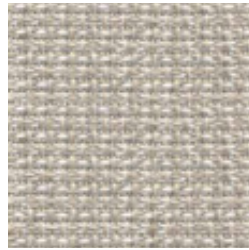


zander ochre

group 22 - tatami



tatami 01



tatami 02



tatami 03

outdoor

Upholstery / tapizado

group 23 - bora bora Crevin®



bora bora 99



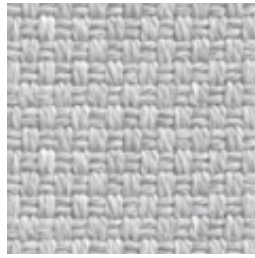
bora bora 08



bora bora 05



bora bora 11



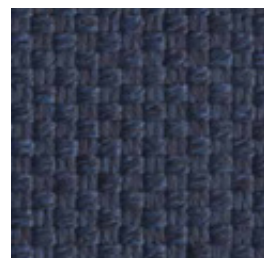
bora bora 50



bora bora 54

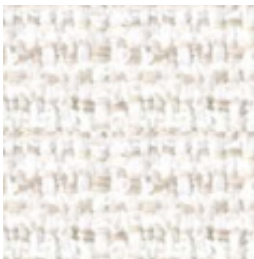


bora bora 42



bora bora 47

group 23 - nature



nature 01

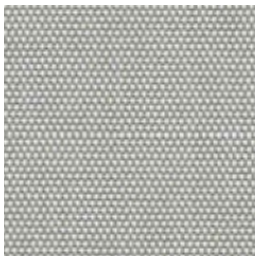


nature 02



nature 03

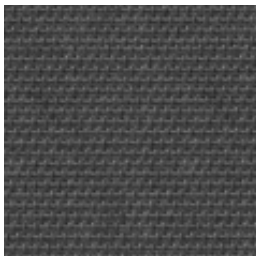
group 23 - sling Sunbrella®



sling sailing seagull



sling sailing space



sling logan graphite

outdoor

Plump

Double central module / módulo central doble

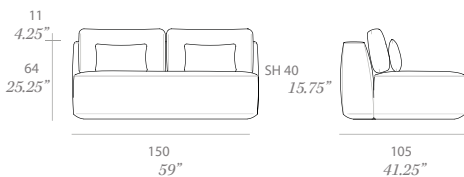
Studio expormim 2014

C878



Module made of high resistance aluminum tube and upholstered with foam of different densities. Possibility of customization through a wide variety of technical fabrics completely suitable for outdoor use. Upholstery*.
2 loose cushions 19.75"x 12.5" included.

Módulo fabricado en estructura de aluminio de alta resistencia y tapizado con espuma de diferentes densidades. Posibilidad de personalización mediante una amplia variedad de tejidos técnicos totalmente aptos para exteriores. Tapizado fijo*.
2 cojines decorativos de 50x32 cm incluido.



Shipment details

Qty	1 module (1 box)
Volume	1,16 m ³ / 41 ft ³
Gross weight	45 kg / 99 lb
Net weight	38 kg / 84 lb
Item dimensions (width x depth x height)	150 x 105 x 64 cm 59" x 41.25" x 25.25"
COM (1, 40 - 1,50 m / 54"-59")	upholstered: 8 m / 8.8 yd loose cushions: 1 m / 1.1 yd

Certifications

UNE EN 581-1:2017
UNE EN 581-2:2016
UNE EN 1022:2005

* With the aim of extending the service life of the products, Expormim highly recommends the use of protective covers during the periods when the furniture is not being used and exposed to the elements.

* Con la intención de alargar la vida útil del producto, Expormim aconseja el uso de fundas protectoras durante los periodos donde el mueble no vaya a ser utilizado de forma continua, quedando expuesto a la intemperie.

expormim

Expormim S.A.
Pol. Ind. Jaime I
46640 Moixent (Valencia) Spain
+34 962 295 144/5
export@expormim.com
www.expormim.com

Expormim USA LLC
(212) 204-8572
usa@expormim.com
www.expormim.com

1/5

outdoor

Upholstery/ tapizado

group 21 - dolce Crevin®



dolce 07



dolce 16



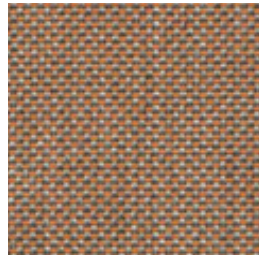
dolce 11



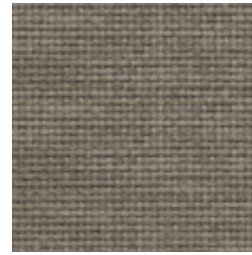
dolce 80



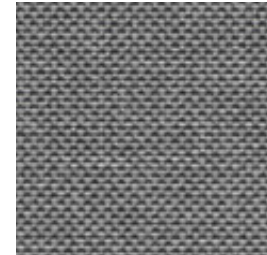
dolce 04



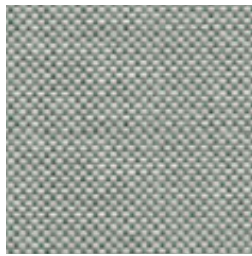
dolce 24



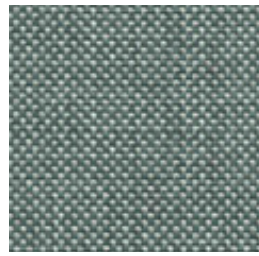
dolce 12



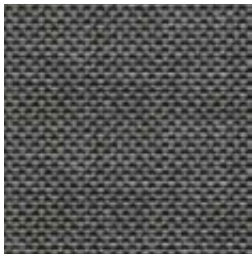
dolce 51



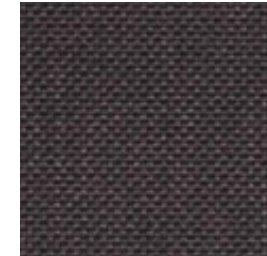
dolce 31



dolce 37



dolce 83



dolce 53

outdoor

Upholstery/ tapizado

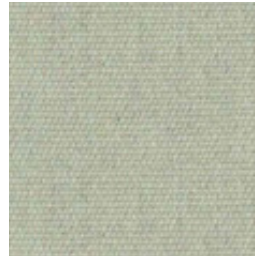
group 22 - heritage Sunbrella®



heritage papyrus



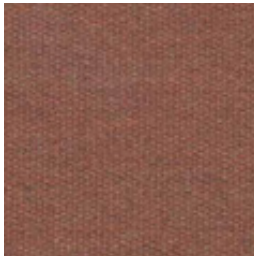
heritage ash



heritage moss



heritage leaf



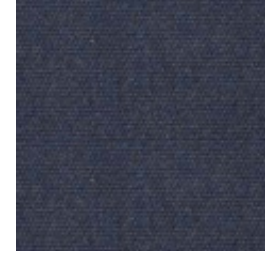
heritage rust



heritage scarlet



heritage slate



heritage indigo

group 22 - strada Crevin®



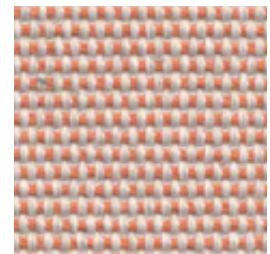
strada 07



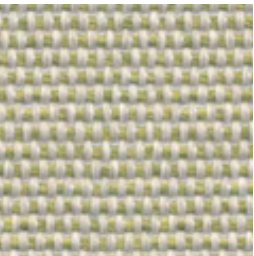
strada 16



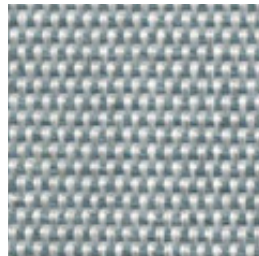
strada 75



strada 29



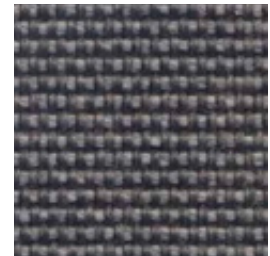
strada 32



strada 43



strada 51

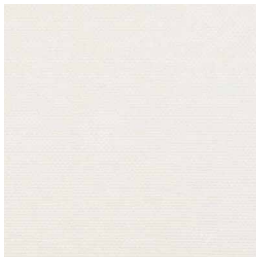


strada 83

outdoor

Upholstery/ tapizado

group 22 - silvertex™



silvertex ice



silvertex macadamia



silvertex sandstone



silvertex taupe

group 22 - zander



zander brilliant white



zander parchment

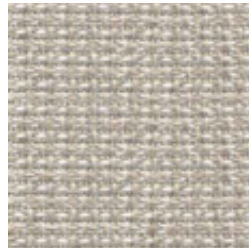


zander ochre

group 22 - tatami



tatami 01



tatami 02



tatami 03

outdoor

Upholstery / tapizado

group 23 - bora bora Crevin®



bora bora 99



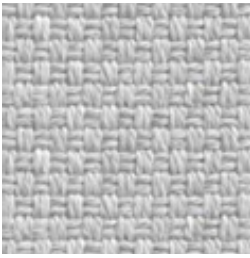
bora bora 08



bora bora 05



bora bora 11



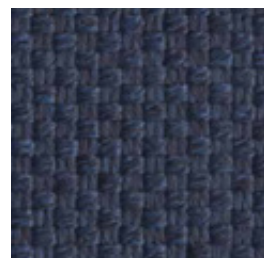
bora bora 50



bora bora 54

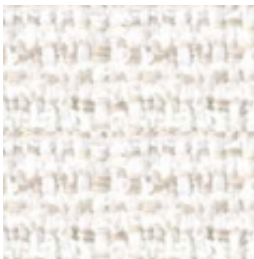


bora bora 42



bora bora 47

group 23 - nature



nature 01

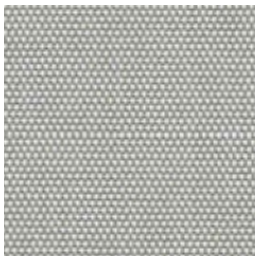


nature 02



nature 03

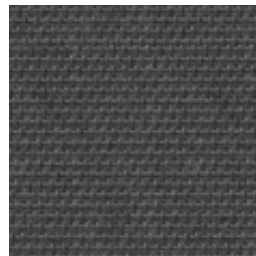
group 23 - sling Sunbrella®



sling sailing seagull



sling sailing space



sling logan graphite

expormim

Expormim S.A.
Pol. Ind. Jaime I
46640 Moixent (Valencia) Spain
+34 962 295 144/5
export@expormim.com
www.expormim.com

Expormim USA LLC
(212) 204-8572
usa@expormim.com
www.expormim.com