

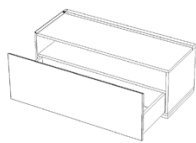
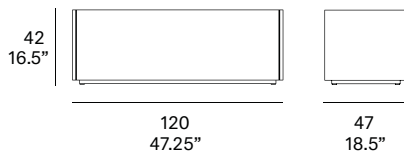
indoor

Team

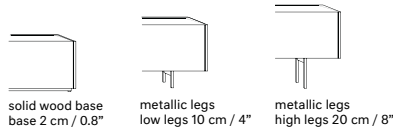
1-drawer TV module / mueble TV 1 cajón

Mario Ruiz, 2017

T811 C



1-drawer / 1 cajón



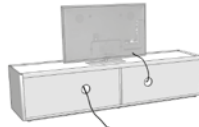
solid wood base
base 2 cm / 0.8"

metallic legs
low legs 10 cm / 4"

metallic legs
high legs 20 cm / 8"



STANDARD



SPECIAL

All units are manufactured WITH NO STANDARD CABLE GROMMETS. If needed, please indicate the place and position before placing an order.

Todos los muebles contenedores SE SIRVEN SIN AGUJEROS PASACABLES. Indicar lugar y posición en caso de necesidad.

Furniture system made of solid wood from European oaks. Possibility to customize the top by using different upholstery. There are several options for the legs: solid wood base of 0.8" high and metallic legs of 4" or 8" high. The collection is also available in a lacquered version (MDF).

Sistema de mobiliario fabricado en madera maciza de roble europeo. Posibilidad de personalizar la tapa mediante el empleo de multiples tapizados. Existen varias opciones de patas: base de madera de 2 cm de altura y patas metálicas de 10 ó 20 cm de altura. La colección también está disponible en versión lacada (MDF).

Shipment details

Qty	1 tv module (1 box)
Volume	0,31 m ³ / 10.9 ft ³
Gross weight	48 kg / 105.8 lb
Net weight	42 kg / 92.6 lb
Item dimensions - with base (width x depth x height)	120 x 47 x 42 cm 47.25" x 18.5" x 16.5"
height with low legs	50 cm / 19.75"
height with high legs	60 cm / 23.5"

expormim

Expormim S.A.
Pol. Ind. Jaime I
46640 Moixent (Valencia) Spain
+34 962 295 144/5
export@expormim.com
www.expormim.com

Expormim USA LLC
(212) 204-8572
usa@expormim.com
www.expormim.com

1/5

indoor

solid wood / mader



W01 natural oak



W03 light oak



W02 white stained



W04 black stained

Lacquered

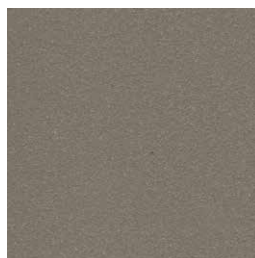
textured lacquers



LT02 light grey



LT09 champagne



LT10 bronze

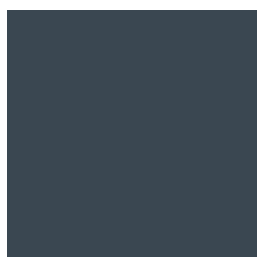


LT11 graphite

lacquers



L17 forest green



L16 navy blue



L14 japanese red



L5 taupe

indoor

Metallic legs / patas metálicas



102 FT light grey
fine textured



109 FT champagne
fine textured



110 FT bronze
fine textured



108 FT oxide
fine textured



111 FT graphite
fine textured

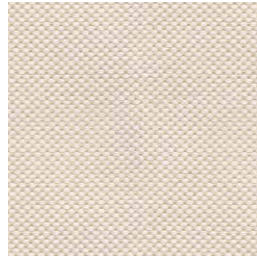
indoor

Upholstered top / tapa tapizada

group 1 - natté Sunbrella®



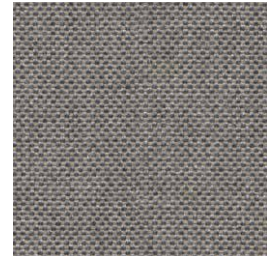
natté white



natté canvas



natté taupe chalk



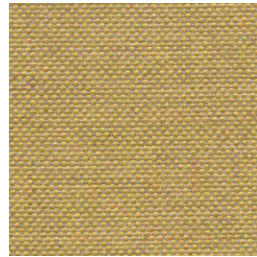
natté carbon beige



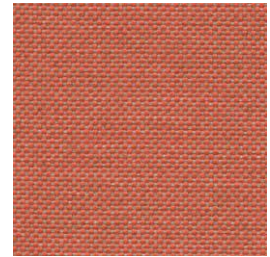
natté dark taupe



natté carbon sky



natté amber



natté flamingo

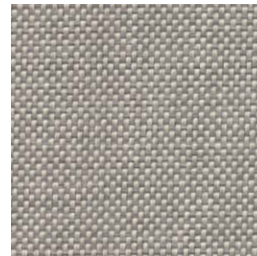
group 1 - dolce Crevin®



dolce 07



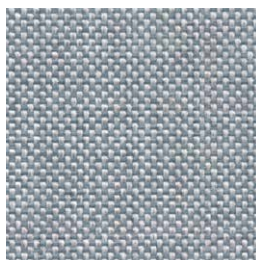
dolce 16



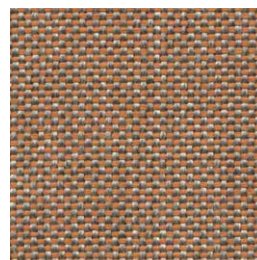
dolce 75



dolce 53



dolce 43



dolce 24



dolce 30

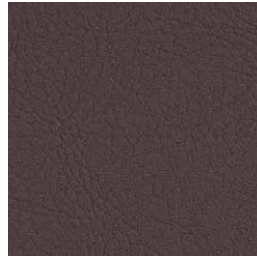
indoor

Upholstered top / tapa tapizada

group 1 - valencia™ faux leather



valencia 1049



valencia 0020

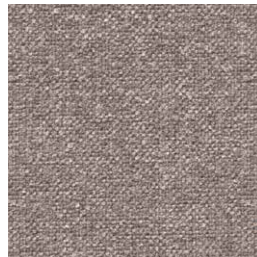


valencia 9035

group 2 - ito Crevin®



ito 05



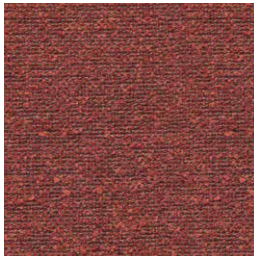
ito 18



ito 12



ito 71



ito 21



ito 20



ito 38



ito 45

group 2 - sacco Crevin®



sacco 02



sacco 05



sacco 11

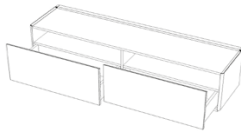
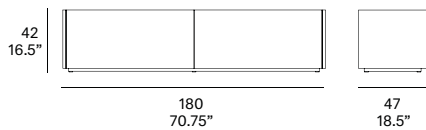
indoor

Team

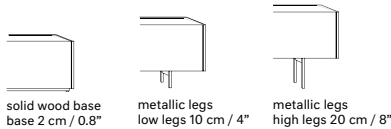
2-drawer TV module / mueble TV 2 cajones

Mario Ruiz, 2017

T812 C



2-drawer / 2 cajones



solid wood base
base 2 cm / 0.8"

metallic legs
low legs 10 cm / 4"

metallic legs
high legs 20 cm / 8"



STANDARD



SPECIAL

All units are manufactured WITH NO STANDARD CABLE GROMMETS. If needed, please indicate the place and position before placing an order.

Todos los muebles contenedores SE SIRVEN SIN AGUJEROS PASACABLES. Indicar lugar y posición en caso de necesidad.

Furniture system made of solid wood from European oaks. Possibility to customize the top by using different upholstery. There are several options for the legs: solid wood base of 0.8" high and metallic legs of 4" or 8" high. The collection is also available in a lacquered version (MDF).

Sistema de mobiliario fabricado en madera maciza de roble europeo. Posibilidad de personalizar la tapa mediante el empleo de multiples tapizados. Existen varias opciones de patas: base de madera de 2 cm de altura y patas metálicas de 10 ó 20 cm de altura. La colección también está disponible en versión lacada (MDF).

Shipment details

Qty	1 tv module (1 box)
Volume	0,45 m ³ / 15.9 ft ³
Gross weight	70 kg / 154.3 lb
Net weight	63 kg / 138.9 lb
Item dimensions - with base (width x depth x height)	180 x 47 x 42 cm 70.75" x 18.5" x 16.5"
height with low legs	50 cm / 19.75"
height with high legs	60 cm / 23.5"

expormim

Expormim S.A.
Pol. Ind. Jaime I
46640 Moixent (Valencia) Spain
+34 962 295 144/5
export@expormim.com
www.expormim.com

Expormim USA LLC
(212) 204-8572
usa@expormim.com
www.expormim.com

1/5

indoor

solid wood / mader



W01 natural oak



W03 light oak



W02 white stained



W04 black stained

Lacquered

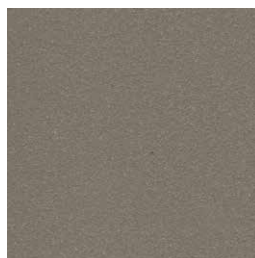
textured lacquers



LT02 light grey



LT09 champagne



LT10 bronze

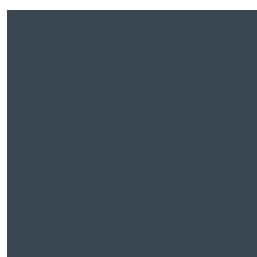


LT11 graphite

lacquers



L17 forest green



L16 navy blue



L14 japanese red



L5 taupe

indoor

Metallic legs / patas metálicas



102 FT light grey
fine textured



109 FT champagne
fine textured



110 FT bronze
fine textured



108 FT oxide
fine textured



111 FT graphite
fine textured

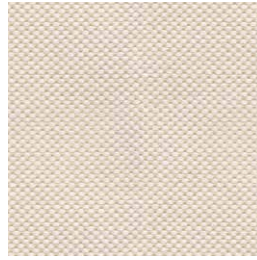
indoor

Upholstered top / tapa tapizada

group 1 - natté Sunbrella®



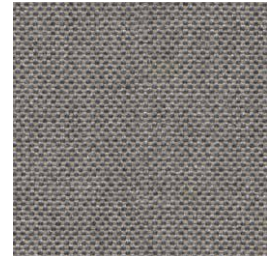
natté white



natté canvas



natté taupe chalk



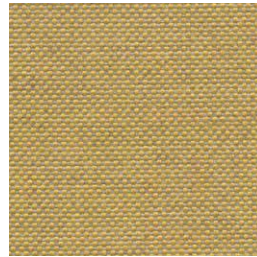
natté carbon beige



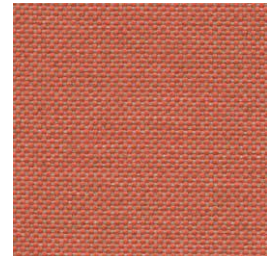
natté dark taupe



natté carbon sky



natté amber



natté flamingo

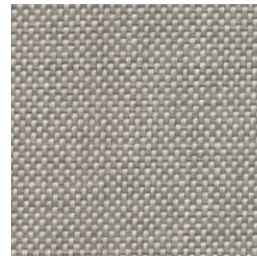
group 1 - dolce Crevin®



dolce 07



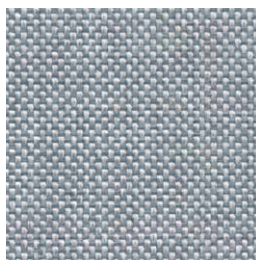
dolce 16



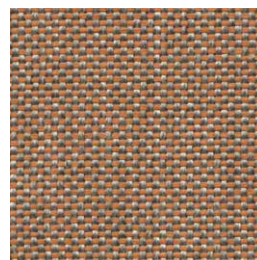
dolce 75



dolce 53



dolce 43



dolce 24



dolce 30

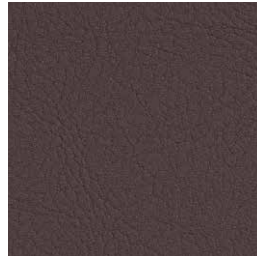
indoor

Upholstered top / tapa tapizada

group 1 - valencia™ faux leather



valencia 1049



valencia 0020

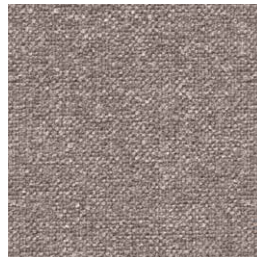


valencia 9035

group 2 - ito Crevin®



ito 05



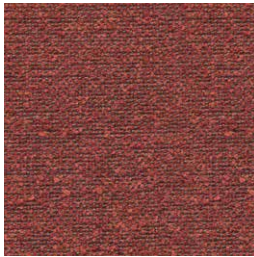
ito 18



ito 12



ito 71



ito 21



ito 20



ito 38



ito 45

group 2 - sacco Crevin®



sacco 02



sacco 05



sacco 11

expormim

Expormim S.A.
Pol. Ind. Jaime I
46640 Moixent (Valencia) Spain
+34 962 295 144/5
export@expormim.com
www.expormim.com

Expormim USA LLC
(212) 204-8572
usa@expormim.com
www.expormim.com

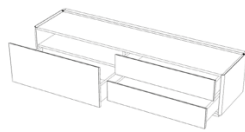
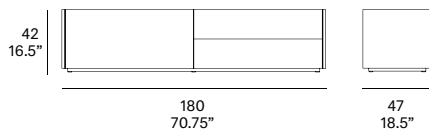
indoor

Team

3-drawer TV module / mueble TV 3 cajones

Mario Ruiz, 2017

T813 C



3-drawer / 3 cajones



solid wood base
base 2 cm / 0.8"



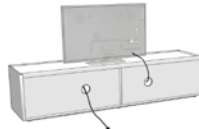
metallic legs
low legs 10 cm / 4"



metallic legs
high legs 20 cm / 8"



STANDARD



SPECIAL

All units are manufactured WITH NO STANDARD CABLE GROMMETS. If needed, please indicate the place and position before placing an order.

Todos los muebles contenedores SE SIRVEN SIN AGUJEROS PASACABLES. Indicar lugar y posición en caso de necesidad.

Furniture system made of solid wood from European oaks. Possibility to customize the top by using different upholstery. There are several options for the legs: solid wood base of 0.8" high and metallic legs of 4" or 8" high. The collection is also available in a lacquered version (MDF).

Sistema de mobiliario fabricado en madera maciza de roble europeo. Posibilidad de personalizar la tapa mediante el empleo de multiples tapizados. Existen varias opciones de patas: base de madera de 2 cm de altura y patas metálicas de 10 ó 20 cm de altura. La colección también está disponible en versión lacada (MDF).

Shipment details

Qty	1 tv module (1 box)
Volume	0,45 m ³ / 15.9 ft ³
Gross weight	75 kg / 165.3 lb
Net weight	68 kg / 149.9 lb
Item dimensions - with base (width x depth x height)	180 x 47 x 42 cm 70.75" x 18.5" x 16.5"
height with low legs	50 cm / 19.75"
height with high legs	60 cm / 23.5"

expormim

Expormim S.A.
Pol. Ind. Jaime I
46640 Moixent (Valencia) Spain
+34 962 295 144/5
export@expormim.com
www.expormim.com

Expormim USA LLC
(212) 204-8572
usa@expormim.com
www.expormim.com

1/5

indoor

solid wood / madera



W01 natural oak



W03 light oak



W02 white stained



W04 black stained

Lacquered

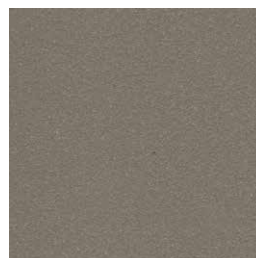
textured lacquers



LT02 light grey



LT09 champagne



LT10 bronze

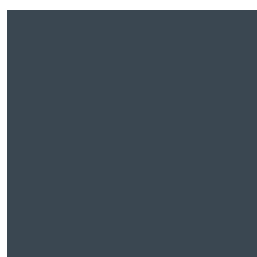


LT11 graphite

lacquers



L17 forest green



L16 navy blue



L14 japanese red



L5 taupe

indoor

Metallic legs / patas metálicas



102 FT light grey
fine textured



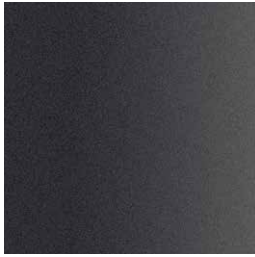
109 FT champagne
fine textured



110 FT bronze
fine textured



108 FT oxide
fine textured



111 FT graphite
fine textured

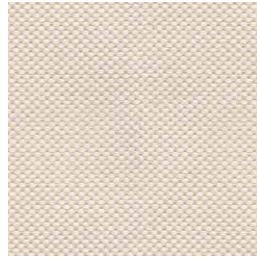
indoor

Upholstered top / tapa tapizada

group 1 - natté Sunbrella®



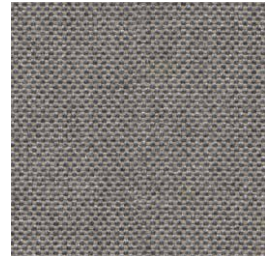
natté white



natté canvas



natté taupe chalk



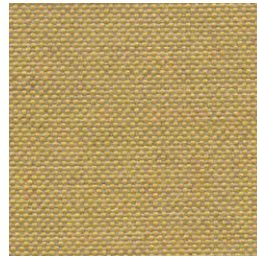
natté carbon beige



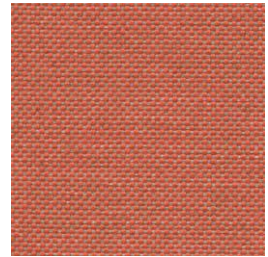
natté dark taupe



natté carbon sky



natté amber



natté flamingo

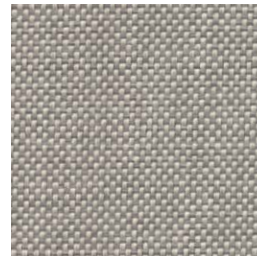
group 1 - dolce Crevin®



dolce 07



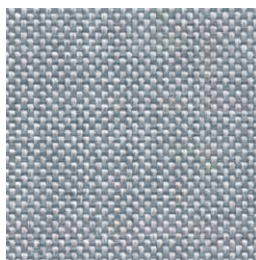
dolce 16



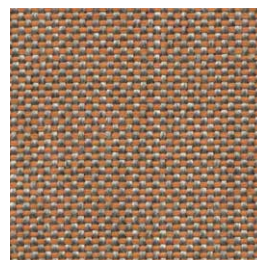
dolce 75



dolce 53



dolce 43



dolce 24



dolce 30

indoor

Upholstered top / tapa tapizada

group 1 - valencia™ faux leather



valencia 1049



valencia 0020

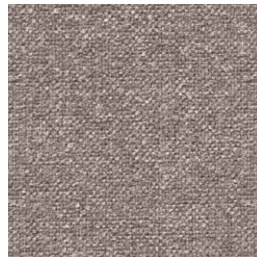


valencia 9035

group 2 - ito Crevin®



ito 05



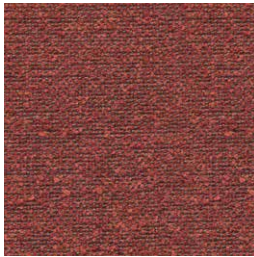
ito 18



ito 12



ito 71



ito 21



ito 20



ito 38



ito 45

group 2 - sacco Crevin®



sacco 02



sacco 05



sacco 11

expormim

Expormim S.A.
Pol. Ind. Jaime I
46640 Moixent (Valencia) Spain
+34 962 295 144/5
export@expormim.com
www.expormim.com

Expormim USA LLC
(212) 204-8572
usa@expormim.com
www.expormim.com

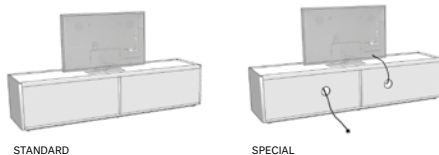
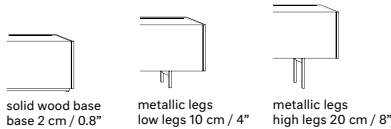
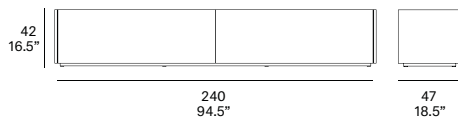
indoor

Team

2-drawer TV module / mueble TV 2 cajones

Mario Ruiz, 2017

T822 C



All units are manufactured WITH NO STANDARD CABLE GROMMETS. If needed, please indicate the place and position before placing an order.

Todos los muebles contenedores SE SIRVEN SIN AGUJEROS PASACABLES. Indicar lugar y posición en caso de necesidad.

Furniture system made of solid wood from European oaks. Possibility to customize the top by using different upholstery. There are several options for the legs: solid wood base of 0.8" high and metallic legs of 4" or 8" high. The collection is also available in a lacquered version (MDF).

Sistema de mobiliario fabricado en madera maciza de roble europeo. Posibilidad de personalizar la tapa mediante el empleo de multiples tapizados. Existen varias opciones de patas: base de madera de 2 cm de altura y patas metálicas de 10 ó 20 cm de altura. La colección también está disponible en versión lacada (MDF).

Shipment details

Qty	1 tv module (1 box)
Volume	0,60 m ³ / 21.2 ft ³
Gross weight	95 kg / 209.4 lb
Net weight	87 kg / 191.8 lb

Item dimensions - with base (width x depth x height)	240 x 47 x 42 cm 94.5" x 18.5" x 16.5"
height with low legs	50 cm / 19.75"
height with high legs	60 cm / 23.5"

expormim

Expormim S.A.
Pol. Ind. Jaime I
46640 Moixent (Valencia) Spain
+34 962 295 144/5
export@expormim.com
www.expormim.com

Expormim USA LLC
(212) 204-8572
usa@expormim.com
www.expormim.com

1/5

indoor

solid wood / mader



W01 natural oak



W03 light oak



W02 white stained



W04 black stained

Lacquered

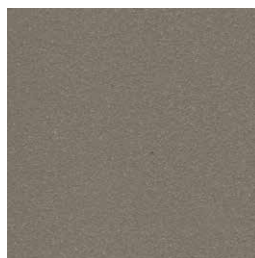
textured lacquers



LT02 light grey



LT09 champagne



LT10 bronze

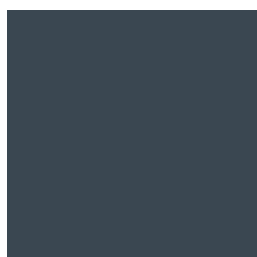


LT11 graphite

lacquers



L17 forest green



L16 navy blue



L14 japanese red



L5 taupe

indoor

Metallic legs / patas metálicas



102 FT light grey
fine textured



109 FT champagne
fine textured



110 FT bronze
fine textured



108 FT oxide
fine textured



111 FT graphite
fine textured

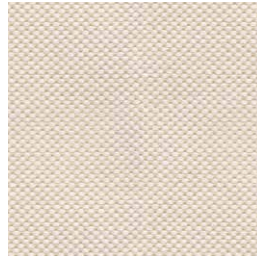
indoor

Upholstered top / tapa tapizada

group 1 - natté Sunbrella®



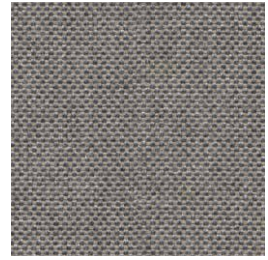
natté white



natté canvas



natté taupe chalk



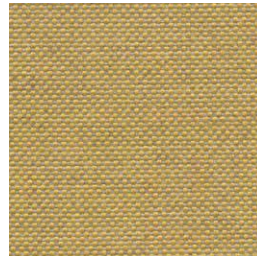
natté carbon beige



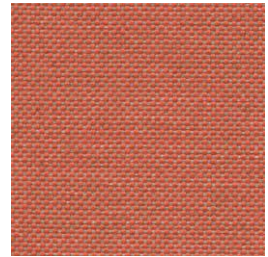
natté dark taupe



natté carbon sky



natté amber



natté flamingo

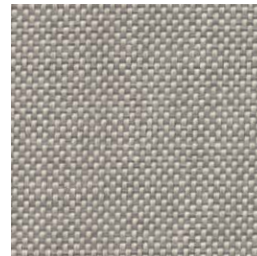
group 1 - dolce Crevin®



dolce 07



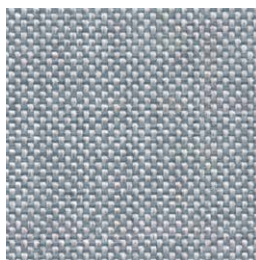
dolce 16



dolce 75



dolce 53



dolce 43



dolce 24



dolce 30

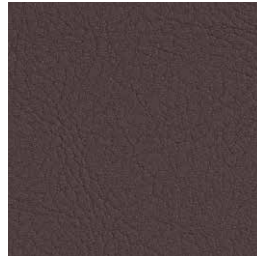
indoor

Upholstered top / tapa tapizada

group 1 - valencia™ faux leather



valencia 1049



valencia 0020

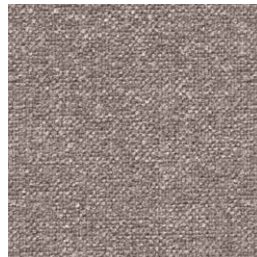


valencia 9035

group 2 - ito Crevin®



ito 05



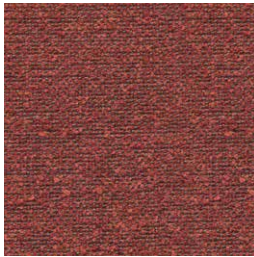
ito 18



ito 12



ito 71



ito 21



ito 20



ito 38



ito 45

group 2 - sacco Crevin®



sacco 02



sacco 05



sacco 11

expormim

Expormim S.A.
Pol. Ind. Jaime I
46640 Moixent (Valencia) Spain
+34 962 295 144/5
export@expormim.com
www.expormim.com

Expormim USA LLC
(212) 204-8572
usa@expormim.com
www.expormim.com

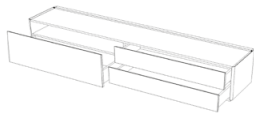
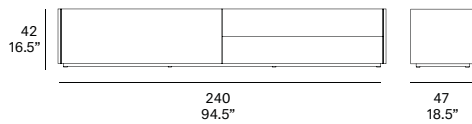
indoor

Team

3-drawer TV module / mueble TV 3 cajones

Mario Ruiz, 2017

T823 C



3-drawer / 3 cajones



solid wood base
base 2 cm / 0.8"



metallic legs
low legs 10 cm / 4"



metallic legs
high legs 20 cm / 8"



STANDARD



SPECIAL

All units are manufactured WITH NO STANDARD CABLE GROMMETS. If needed, please indicate the place and position before placing an order.

Todos los muebles contenedores SE SIRVEN SIN AGUJEROS PASACABLES. Indicar lugar y posición en caso de necesidad.

Furniture system made of solid wood from European oaks. Possibility to customize the top by using different upholstery. There are several options for the legs: solid wood base of 0.8" high and metallic legs of 4" or 8" high. The collection is also available in a lacquered version (MDF).

Sistema de mobiliario fabricado en madera maciza de roble europeo. Posibilidad de personalizar la tapa mediante el empleo de multiples tapizados. Existen varias opciones de patas: base de madera de 2 cm de altura y patas metálicas de 10 ó 20 cm de altura. La colección también está disponible en versión lacada (MDF).

Shipment details

Qty	1 tv module (1 box)
Volume	0,60 m ³ / 21.2 ft ³
Gross weight	99 kg / 218.3 lb
Net weight	92 kg / 202.8 lb

Item dimensions - with base
(width x depth x height) 240 x 47 x 42 cm
94.5" x 18.5" x 16.5"

height with low legs 50 cm / 19.75"

height with high legs 60 cm / 23.5"

expormim

Expormim S.A.
Pol. Ind. Jaime I
46640 Moixent (Valencia) Spain
+34 962 295 144/5
export@expormim.com
www.expormim.com

Expormim USA LLC
(212) 204-8572
usa@expormim.com
www.expormim.com

1/5

indoor

solid wood / madera



W01 natural oak



W03 light oak



W02 white stained



W04 black stained

Lacquered

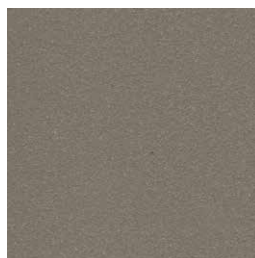
textured lacquers



LT02 light grey



LT09 champagne



LT10 bronze

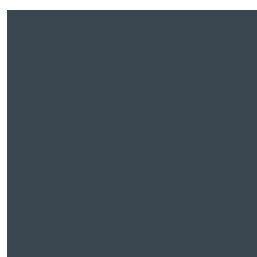


LT11 graphite

lacquers



L17 forest green



L16 navy blue



L14 japanese red



L5 taupe

indoor

Metallic legs / patas metálicas



102 FT light grey
fine textured



109 FT champagne
fine textured



110 FT bronze
fine textured



108 FT oxide
fine textured



111 FT graphite
fine textured

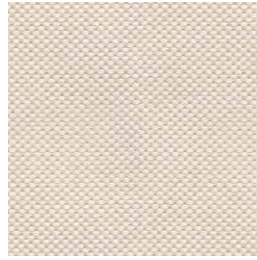
indoor

Upholstered top / tapa tapizada

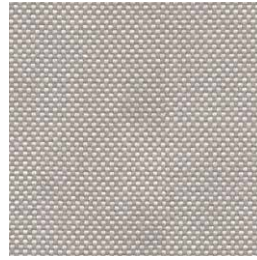
group 1 - natté Sunbrella®



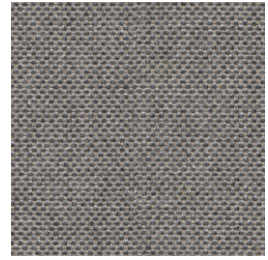
natté white



natté canvas



natté taupe chalk



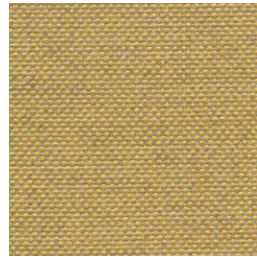
natté carbon beige



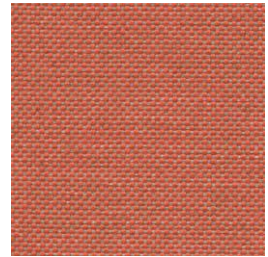
natté dark taupe



natté carbon sky



natté amber



natté flamingo

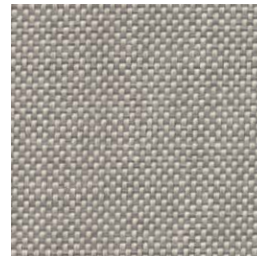
group 1 - dolce Crevin®



dolce 07



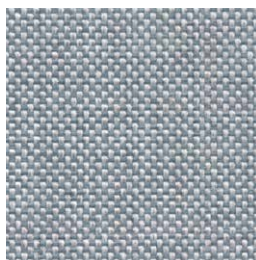
dolce 16



dolce 75



dolce 53



dolce 43



dolce 24



dolce 30

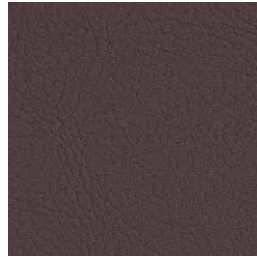
indoor

Upholstered top / tapa tapizada

group 1 - valencia™ faux leather



valencia 1049



valencia 0020

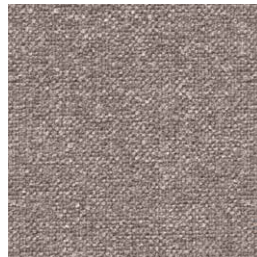


valencia 9035

group 2 - ito Crevin®



ito 05



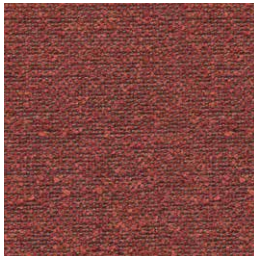
ito 18



ito 12



ito 71



ito 21



ito 20



ito 38



ito 45

group 2 - sacco Crevin®



sacco 02



sacco 05



sacco 11

expormim

Expormim S.A.
Pol. Ind. Jaime I
46640 Moixent (Valencia) Spain
+34 962 295 144/5
export@expormim.com
www.expormim.com

Expormim USA LLC
(212) 204-8572
usa@expormim.com
www.expormim.com

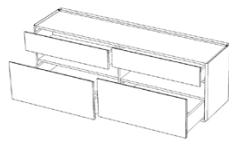
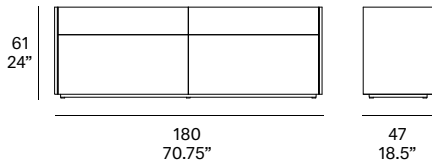
indoor

Team

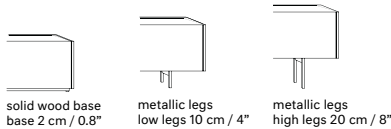
4-drawer sideboard / aparador 4 cajones

Mario Ruiz, 2017

T834



4-drawer / 4 cajones



STANDARD



SPECIAL

All units are manufactured WITH NO STANDARD CABLE GROMMETS. If needed, please indicate the place and position before placing an order.

Todos los muebles contenedores SE SIRVEN SIN AGUJEROS PASACABLES. Indicar lugar y posición en caso de necesidad.

Furniture system made of solid wood from European oaks. Possibility to customize the top by using different upholstery. There are several options for the legs: solid wood base of 0.8" high and metallic legs of 4" or 8" high. The collection is also available in a lacquered version (MDF).

Sistema de mobiliario fabricado en madera maciza de roble europeo. Posibilidad de personalizar la tapa mediante el empleo de multiples tapizados. Existen varias opciones de patas: base de madera de 2 cm de altura y patas metálicas de 10 ó 20 cm de altura. La colección también está disponible en versión lacada (MDF).

Shipment details

Qty	1 sideboard (1 box)
Volume	0,63 m ³ / 22.2 ft ³
Gross weight	93 kg / 205 lb
Net weight	85 kg / 187.4 lb
Item dimensions - with base (width x depth x height)	180 x 47 x 61 cm 70.75" x 18.5" x 24"
height with low legs	69 cm / 27.25"
height with high legs	79 cm / 31"

expormim

Expormim S.A.
Pol. Ind. Jaime I
46640 Moixent (Valencia) Spain
+34 962 295 144/5
export@expormim.com
www.expormim.com

Expormim USA LLC
(212) 204-8572
usa@expormim.com
www.expormim.com

1/5

indoor

solid wood / madera



W01 natural oak



W03 light oak



W02 white stained



W04 black stained

Lacquered

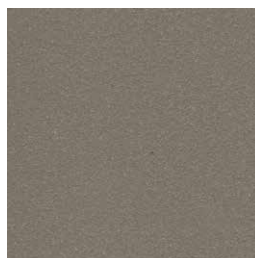
textured lacquers



LT02 light grey



LT09 champagne



LT10 bronze



LT11 graphite

lacquers



L17 forest green



L16 navy blue



L14 japanese red



L5 taupe

indoor

Metallic legs / patas metálicas



102 FT light grey
fine textured



109 FT champagne
fine textured



110 FT bronze
fine textured



108 FT oxide
fine textured



111 FT graphite
fine textured

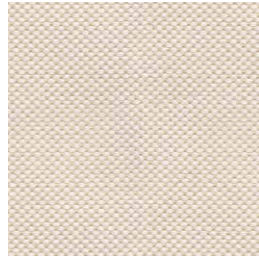
indoor

Upholstered top / tapa tapizada

group 1 - natté Sunbrella®



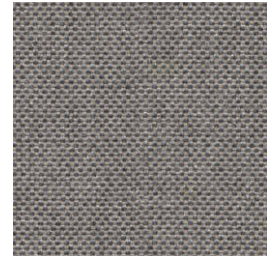
natté white



natté canvas



natté taupe chalk



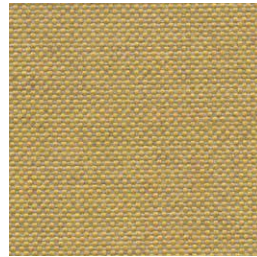
natté carbon beige



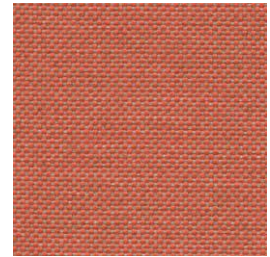
natté dark taupe



natté carbon sky



natté amber



natté flamingo

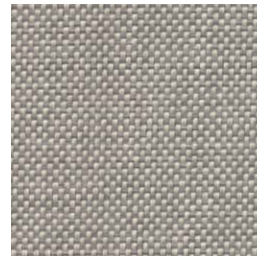
group 1 - dolce Crevin®



dolce 07



dolce 16



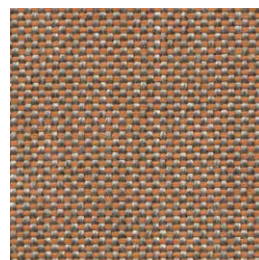
dolce 75



dolce 53



dolce 43



dolce 24



dolce 30

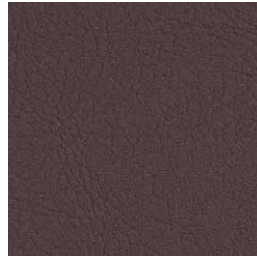
indoor

Upholstered top / tapa tapizada

group 1 - valencia™ faux leather



valencia 1049



valencia 0020

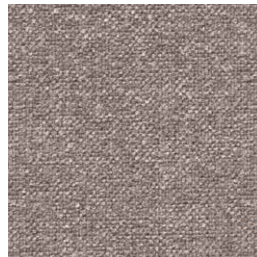


valencia 9035

group 2 - ito Crevin®



ito 05



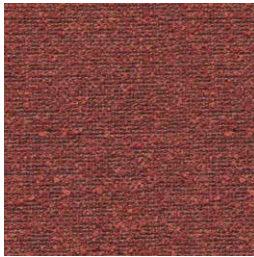
ito 18



ito 12



ito 71



ito 21



ito 20



ito 38



ito 45

group 2 - sacco Crevin®



sacco 02



sacco 05



sacco 11

expormim

Expormim S.A.
Pol. Ind. Jaime I
46640 Moixent (Valencia) Spain
+34 962 295 144/5
export@expormim.com
www.expormim.com

Expormim USA LLC
(212) 204-8572
usa@expormim.com
www.expormim.com

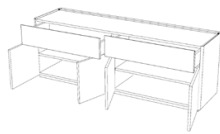
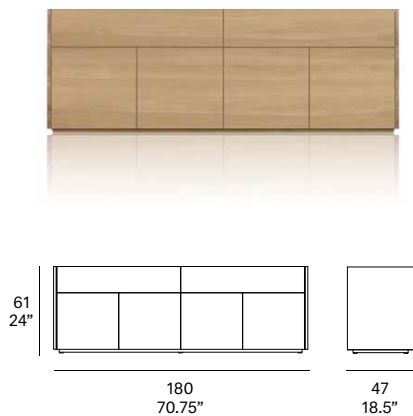
indoor

Team

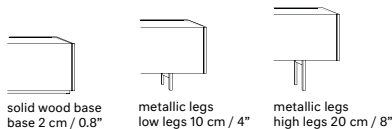
4-door sideboard / aparador 4 puertas

Mario Ruiz, 2017

T835



2-drawer / 2 cajones
2-door / 2 puertas



solid wood base
base 2 cm / 0.8"

metallic legs
low legs 10 cm / 4"

metallic legs
high legs 20 cm / 8"



STANDARD



SPECIAL

All units are manufactured WITH NO STANDARD CABLE GROMMETS. If needed, please indicate the place and position before placing an order.

Todos los muebles contenedores SE SIRVEN SIN AGUJEROS PASACABLES. Indicar lugar y posición en caso de necesidad.

Furniture system made of solid wood from European oaks. Possibility to customize the top by using different upholstery. There are several options for the legs: solid wood base of 0.8" high and metallic legs of 4" or 8" high. The collection is also available in a lacquered version (MDF).

Sistema de mobiliario fabricado en madera maciza de roble europeo. Posibilidad de personalizar la tapa mediante el empleo de multiples tapizados. Existen varias opciones de patas: base de madera de 2 cm de altura y patas metálicas de 10 ó 20 cm de altura. La colección también está disponible en versión lacada (MDF).

Shipment details

Qty	1 sideboard (1 box)
Volume	0,63 m ³ / 22.2 ft ³
Gross weight	89 kg / 196.2 lb
Net weight	81 kg / 178.6 lb
Item dimensions - with base (width x depth x height)	180 x 47 x 61 cm 70.75" x 18.5" x 24"
height with low legs	69 cm / 27.25"
height with high legs	79 cm / 31"

expormim

Expormim S.A.
Pol. Ind. Jaime I
46640 Moixent (Valencia) Spain
+34 962 295 144/5
export@expormim.com
www.expormim.com

Expormim USA LLC
(212) 204-8572
usa@expormim.com
www.expormim.com

1/5

indoor

solid wood / mader



W01 natural oak



W03 light oak



W02 white stained



W04 black stained

Lacquered

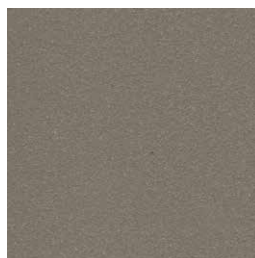
textured lacquers



LT02 light grey



LT09 champagne



LT10 bronze



LT11 graphite

lacquers



L17 forest green



L16 navy blue



L14 japanese red



L5 taupe

indoor

Metallic legs / patas metálicas



102 FT light grey
fine textured



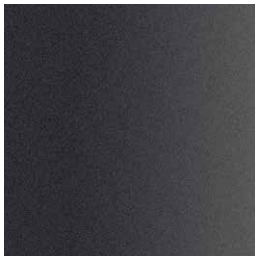
109 FT champagne
fine textured



110 FT bronze
fine textured



108 FT oxide
fine textured



111 FT graphite
fine textured

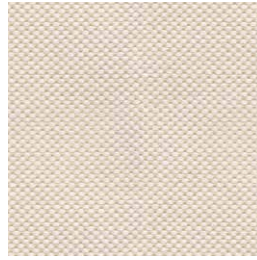
indoor

Upholstered top / tapa tapizada

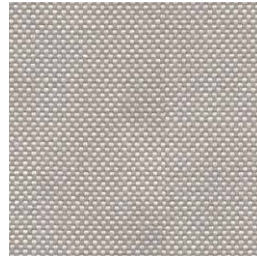
group 1 - natté Sunbrella®



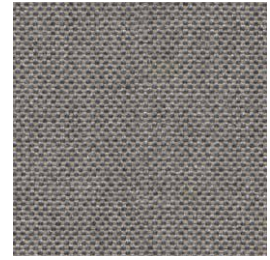
natté white



natté canvas



natté taupe chalk



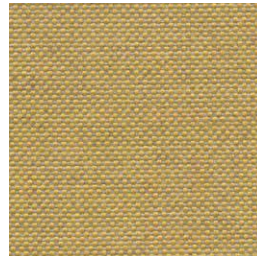
natté carbon beige



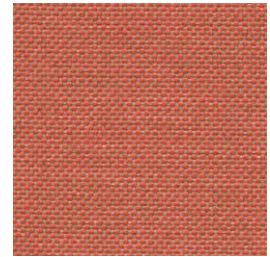
natté dark taupe



natté carbon sky



natté amber



natté flamingo

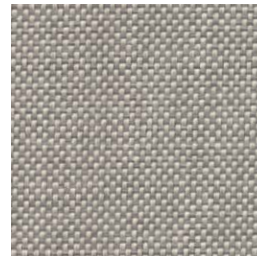
group 1 - dolce Crevin®



dolce 07



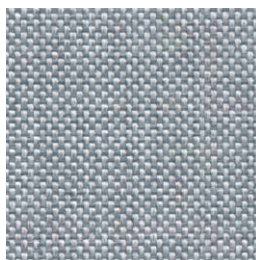
dolce 16



dolce 75



dolce 53



dolce 43



dolce 24



dolce 30

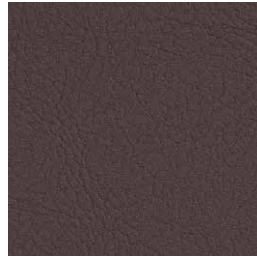
indoor

Upholstered top / tapa tapizada

group 1 - valencia™ faux leather



valencia 1049



valencia 0020

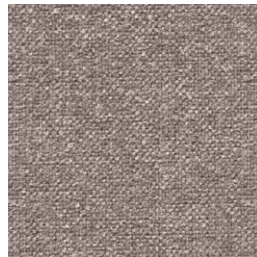


valencia 9035

group 2 - ito Crevin®



ito 05



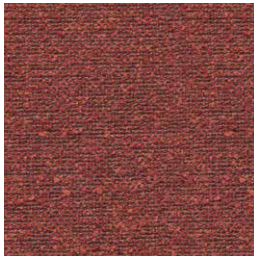
ito 18



ito 12



ito 71



ito 21



ito 20



ito 38



ito 45

group 2 - sacco Crevin®



sacco 02



sacco 05



sacco 11

expormim

Expormim S.A.
Pol. Ind. Jaime I
46640 Moixent (Valencia) Spain
+34 962 295 144/5
export@expormim.com
www.expormim.com

Expormim USA LLC
(212) 204-8572
usa@expormim.com
www.expormim.com

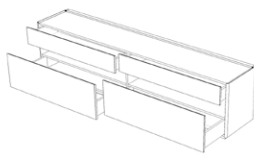
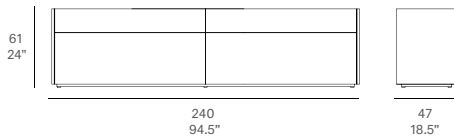
indoor

Team

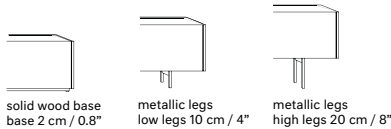
4-drawer sideboard / aparador 4 cajones

Mario Ruiz, 2017

T844



4-drawer / 4 cajones



STANDARD



SPECIAL

All units are manufactured WITH NO STANDARD CABLE GROMMETS. If needed, please indicate the place and position before placing an order.

Todos los muebles contenedores SE SIRVEN SIN AGUJEROS PASACABLES. Indicar lugar y posición en caso de necesidad.

Furniture system made of solid wood from European oaks. Possibility to customize the top by using different upholstery. There are several options for the legs: solid wood base of 0.8" high and metallic legs of 4" or 8" high. The collection is also available in a lacquered version (MDF).

Sistema de mobiliario fabricado en madera maciza de roble europeo. Posibilidad de personalizar la tapa mediante el empleo de multiples tapizados. Existen varias opciones de patas: base de madera de 2 cm de altura y patas metálicas de 10 ó 20 cm de altura. La colección también está disponible en versión lacada (MDF).

Shipment details

Qty	1 sideboard (1 box)
Volume	0,84 m ³ / 29.7 ft ³
Gross weight	120 kg / 264.6 lb
Net weight	112 kg / 246.9 lb
Item dimensions - with base (width x depth x height)	240 x 47 x 61 cm 94.5" x 18.5" x 24"
height with low legs	69 cm / 27.25"
height with high legs	79 cm / 31"

expormim

Expormim S.A.
Pol. Ind. Jaime I
46640 Moixent (Valencia) Spain
+34 962 295 144/5
export@expormim.com
www.expormim.com

Expormim USA LLC
(212) 204-8572
usa@expormim.com
www.expormim.com

1/5

indoor

solid wood / mader



W01 natural oak



W03 light oak



W02 white stained



W04 black stained

Lacquered

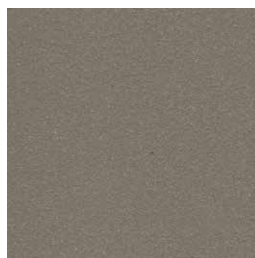
textured lacquers



LT02 light grey



LT09 champagne



LT10 bronze

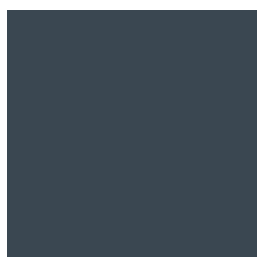


LT11 graphite

lacquers



L17 forest green



L16 navy blue



L14 japanese red



L5 taupe

indoor

Metallic legs / patas metálicas



102 FT light grey
fine textured



109 FT champagne
fine textured



110 FT bronze
fine textured



108 FT oxide
fine textured



111 FT graphite
fine textured

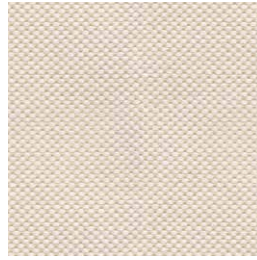
indoor

Upholstered top / tapa tapizada

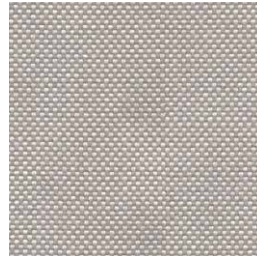
group 1 - natté Sunbrella®



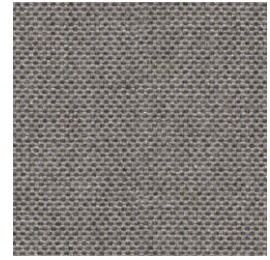
natté white



natté canvas



natté taupe chalk



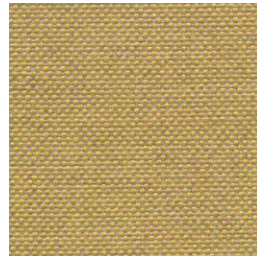
natté carbon beige



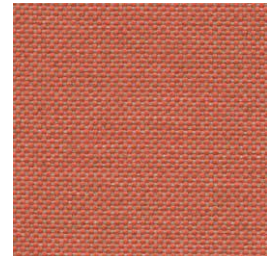
natté dark taupe



natté carbon sky



natté amber



natté flamingo

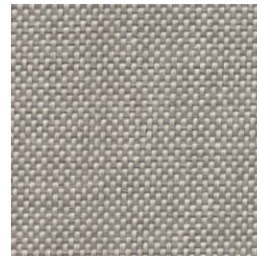
group 1 - dolce Crevin®



dolce 07



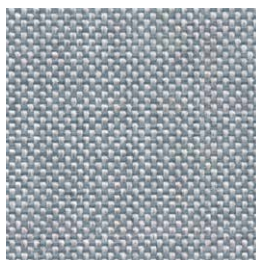
dolce 16



dolce 75



dolce 53



dolce 43



dolce 24



dolce 30

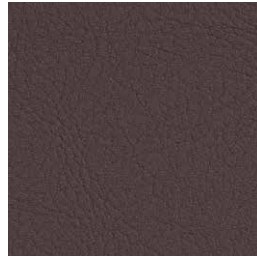
indoor

Upholstered top / tapa tapizada

group 1 - valencia™ faux leather



valencia 1049



valencia 0020

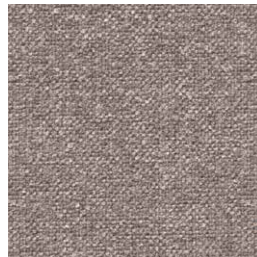


valencia 9035

group 2 - ito Crevin®



ito 05



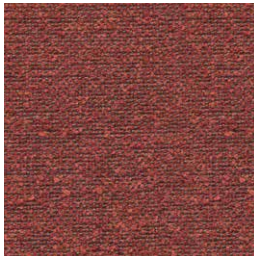
ito 18



ito 12



ito 71



ito 21



ito 20



ito 38



ito 45

group 2 - sacco Crevin®



sacco 02



sacco 05



sacco 11

expormim

Expormim S.A.
Pol. Ind. Jaime I
46640 Moixent (Valencia) Spain
+34 962 295 144/5
export@expormim.com
www.expormim.com

Expormim USA LLC
(212) 204-8572
usa@expormim.com
www.expormim.com

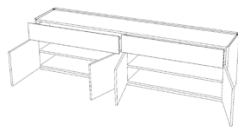
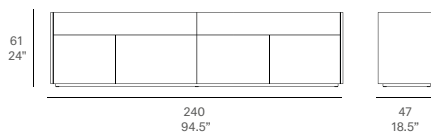
indoor

Team

4-door sideboard / aparador 4 puertas

Mario Ruiz, 2017

T845



2-drawer / 2 cajones
2-door / 2 puertas



solid wood base
base 2 cm / 0.8"



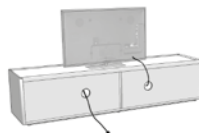
metallic legs
low legs 10 cm / 4"



metallic legs
high legs 20 cm / 8"



STANDARD



SPECIAL

All units are manufactured WITH NO STANDARD CABLE GROMMETS. If needed, please indicate the place and position before placing an order.

Todos los muebles contenedores SE SIRVEN SIN AGUJEROS PASACABLES. Indicar lugar y posición en caso de necesidad.

Furniture system made of solid wood from European oaks. Possibility to customize the top by using different upholstery. There are several options for the legs: solid wood base of 0.8" high and metallic legs of 4" or 8" high. The collection is also available in a lacquered version (MDF).

Sistema de mobiliario fabricado en madera maciza de roble europeo. Posibilidad de personalizar la tapa mediante el empleo de multiples tapizados. Existen varias opciones de patas: base de madera de 2 cm de altura y patas metálicas de 10 ó 20 cm de altura. La colección también está disponible en versión lacada (MDF).

Shipment details

Qty	1 tv module (1 box)
Volume	0,84 m ³ / 29.7 ft ³
Gross weight	116 kg / 255.7 lb
Net weight	108 kg / 238.1 lb
Item dimensions - with base (width x depth x height)	240 x 47 x 61 cm 94.5" x 18.5" x 24"
height with low legs	69 cm / 27.25"
height with high legs	79 cm / 31"

expormim

Expormim S.A.
Pol. Ind. Jaime I
46640 Moixent (Valencia) Spain
+34 962 295 144/5
export@expormim.com
www.expormim.com

Expormim USA LLC
(212) 204-8572
usa@expormim.com
www.expormim.com

1/5

indoor

solid wood / mader



W01 natural oak



W03 light oak



W02 white stained



W04 black stained

Lacquered

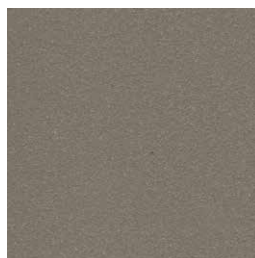
textured lacquers



LT02 light grey



LT09 champagne



LT10 bronze

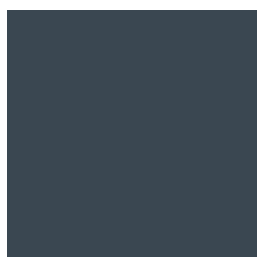


LT11 graphite

lacquers



L17 forest green



L16 navy blue



L14 japanese red



L5 taupe

indoor

Metallic legs / patas metálicas



102 FT light grey
fine textured



109 FT champagne
fine textured



110 FT bronze
fine textured



108 FT oxide
fine textured



111 FT graphite
fine textured

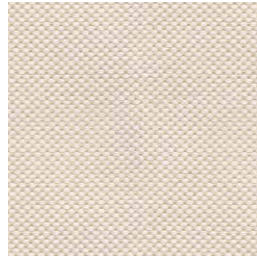
indoor

Upholstered top / tapa tapizada

group 1 - natté Sunbrella®



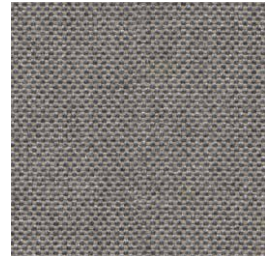
natté white



natté canvas



natté taupe chalk



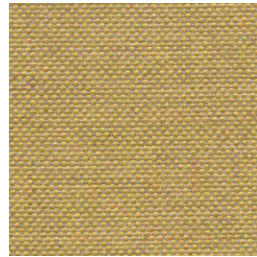
natté carbon beige



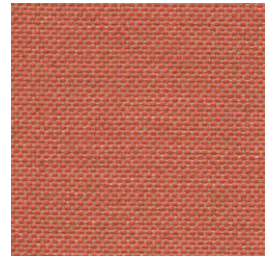
natté dark taupe



natté carbon sky



natté amber



natté flamingo

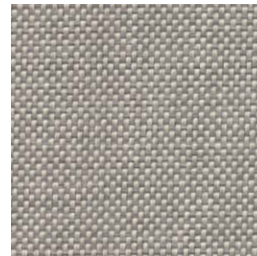
group 1 - dolce Crevin®



dolce 07



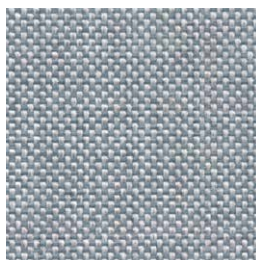
dolce 16



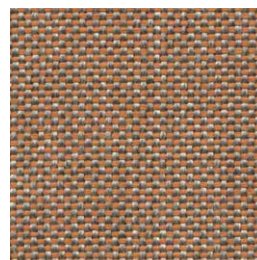
dolce 75



dolce 53



dolce 43



dolce 24



dolce 30

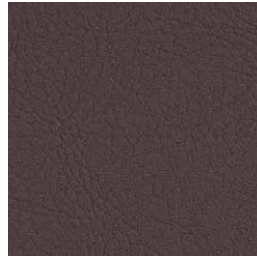
indoor

Upholstered top / tapa tapizada

group 1 - valencia™ faux leather



valencia 1049



valencia 0020

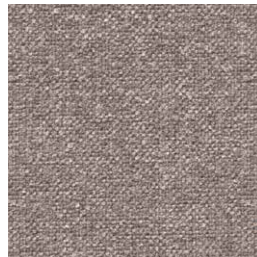


valencia 9035

group 2 - ito Crevin®



ito 05



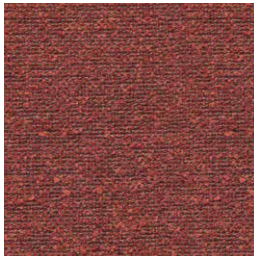
ito 18



ito 12



ito 71



ito 21



ito 20



ito 38



ito 45

group 2 - sacco Crevin®



sacco 02



sacco 05



sacco 11

expormim

Expormim S.A.
Pol. Ind. Jaime I
46640 Moixent (Valencia) Spain
+34 962 295 144/5
export@expormim.com
www.expormim.com

Expormim USA LLC
(212) 204-8572
usa@expormim.com
www.expormim.com

indoor

Team

1-door hanging module / módulo suspensión 1 puerta

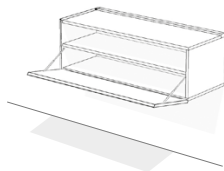
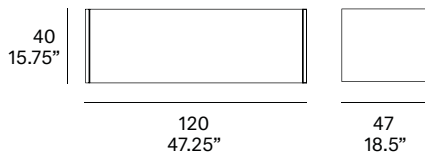
Mario Ruiz, 2017

T879



Furniture system made of solid wood from European oaks. Possibility to customize the top by using different upholstery. The collection is also available in a lacquered version (MDF).

Sistema de mobiliario fabricado en madera maciza de roble europeo. Posibilidad de personalizar la tapa mediante el empleo de múltiples tapizados. La colección también está disponible en versión lacada (MDF).



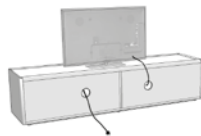
1-door / 1 puerta

Shipment details

Qty	1 hanging module (1 box)
Volume	0,31 m ³ / 10.9 ft ³
Gross weight	44 kg / 97 lb
Net weight	39 kg / 86 lb
Item dimensions (width x depth x height)	120 x 47 x 40 cm 47.25" x 18.5" x 15.75"



STANDARD



SPECIAL

All units are manufactured WITH NO STANDARD CABLE GROMMETS. If needed, please indicate the place and position before placing an order.

Todos los muebles contenedores SE SIRVEN SIN AGUJEROS PASACABLES. Indicar lugar y posición en caso de necesidad.

expormim

Expormim S.A.
Pol. Ind. Jaime I
46640 Moixent (Valencia) Spain
+34 962 295 144/5
export@expormim.com
www.expormim.com

Expormim USA LLC
(212) 204-8572
usa@expormim.com
www.expormim.com

1/4

indoor

solid wood / madera



W01 natural oak



W03 light oak



W02 white stained



W04 black stained

Lacquered

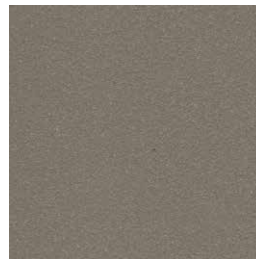
textured lacquers



LT02 light grey



LT09 champagne



LT10 bronze



LT11 graphite

lacquers



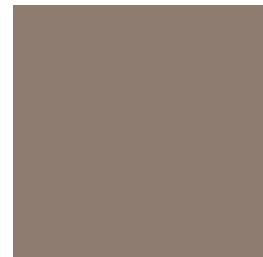
L17 forest green



L16 navy blue



L14 japanese red



L5 taupe

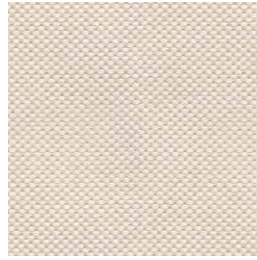
indoor

Upholstered top / tapa tapizada

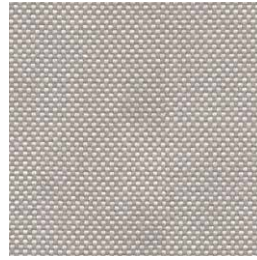
group 1 - natté Sunbrella®



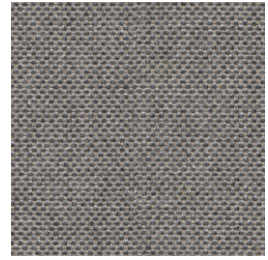
natté white



natté canvas



natté taupe chalk



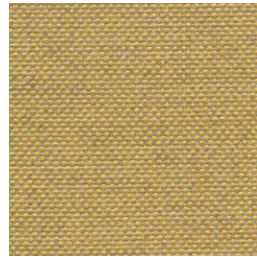
natté carbon beige



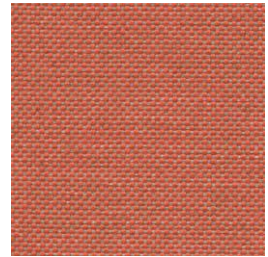
natté dark taupe



natté carbon sky



natté amber



natté flamingo

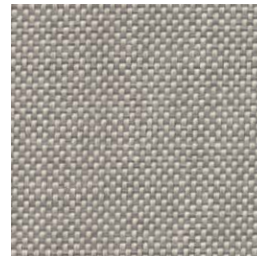
group 1 - dolce Crevin®



dolce 07



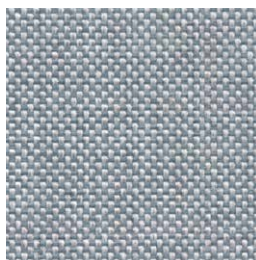
dolce 16



dolce 75



dolce 53



dolce 43



dolce 24



dolce 30

indoor

Upholstered top / tapa tapizada

group 1 - valencia™ faux leather



valencia 1049



valencia 0020

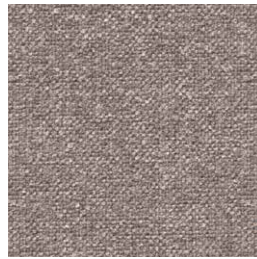


valencia 9035

group 2 - ito Crevin®



ito 05



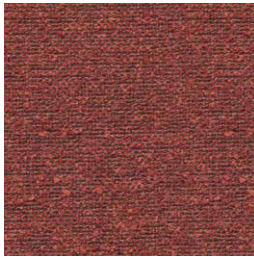
ito 18



ito 12



ito 71



ito 21



ito 20



ito 38



ito 45

group 2 - sacco Crevin®



sacco 02



sacco 05



sacco 11

indoor

Team

2-door hanging module / módulo suspensión 2 puertas

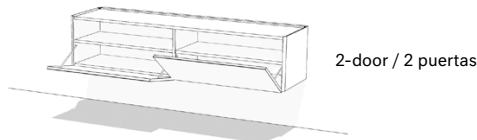
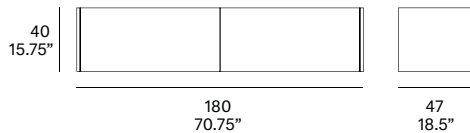
Mario Ruiz, 2017

T880



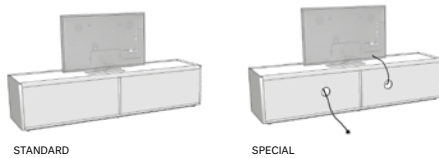
Furniture system made of solid wood from European oaks. Possibility to customize the top by using different upholstery. The collection is also available in a lacquered version (MDF).

Sistema de mobiliario fabricado en madera maciza de roble europeo. Posibilidad de personalizar la tapa mediante el empleo de multiples tapizados. La colección también está disponible en versión lacada (MDF).



Shipment details

Qty	1 hanging module (1 box)
Volume	0,45 m ³ / 15.9 ft ³
Gross weight	66 kg / 145.5 lb
Net weight	60 kg / 132.3 lb
Item dimensions (width x depth x height)	180 x 47 x 40 cm 70.75" x 18.5" x 15.75"



All units are manufactured WITH NO STANDARD CABLE GROMMETS. If needed, please indicate the place and position before placing an order.

Todos los muebles contenedores SE SIRVEN SIN AGUJEROS PASACABLES. Indicar lugar y posición en caso de necesidad.

expormim

Expormim S.A.
Pol. Ind. Jaime I
46640 Moixent (Valencia) Spain
+34 962 295 144/5
export@expormim.com
www.expormim.com

Expormim USA LLC
(212) 204-8572
usa@expormim.com
www.expormim.com

1/4

indoor

solid wood / madera



W01 natural oak



W03 light oak



W02 white stained



W04 black stained

Lacquered

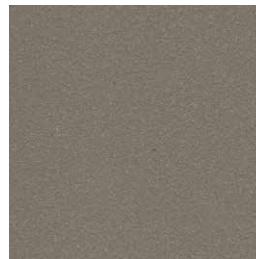
textured lacquers



LT02 light grey



LT09 champagne



LT10 bronze

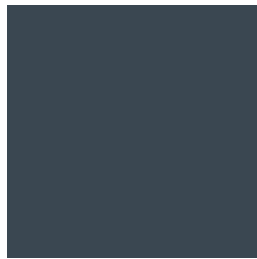


LT11 graphite

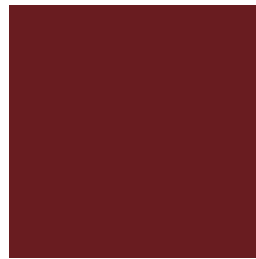
lacquers



L17 forest green



L16 navy blue



L14 japanese red



L5 taupe

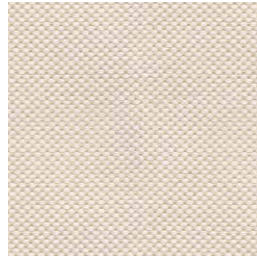
indoor

Upholstered top / tapa tapizada

group 1 - natté Sunbrella®



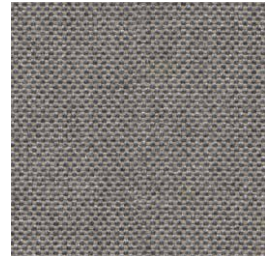
natté white



natté canvas



natté taupe chalk



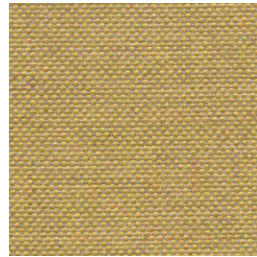
natté carbon beige



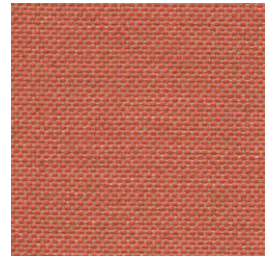
natté dark taupe



natté carbon sky



natté amber



natté flamingo

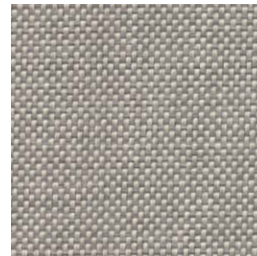
group 1 - dolce Crevin®



dolce 07



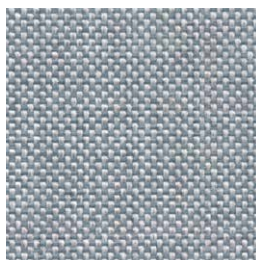
dolce 16



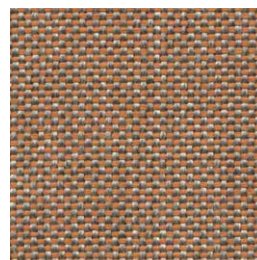
dolce 75



dolce 53



dolce 43



dolce 24



dolce 30

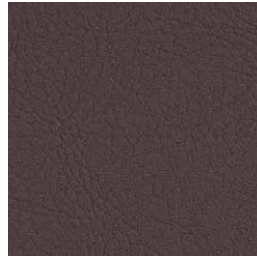
indoor

Upholstered top / tapa tapizada

group 1 - valencia™ faux leather



valencia 1049



valencia 0020

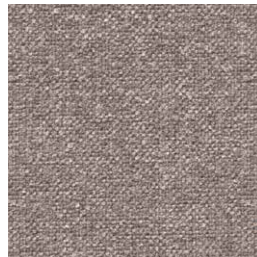


valencia 9035

group 2 - ito Crevin®



ito 05



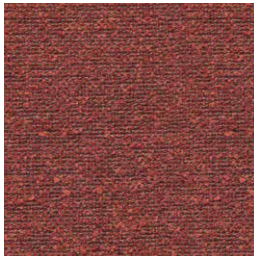
ito 18



ito 12



ito 71



ito 21



ito 20



ito 38



ito 45

group 2 - sacco Crevin®



sacco 02



sacco 05



sacco 11

expormim

Expormim S.A.
Pol. Ind. Jaime I
46640 Moixent (Valencia) Spain
+34 962 295 144/5
export@expormim.com
www.expormim.com

Expormim USA LLC
(212) 204-8572
usa@expormim.com
www.expormim.com

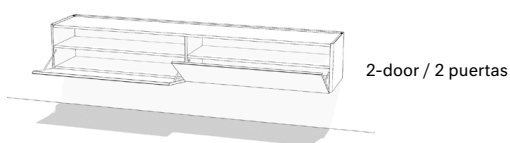
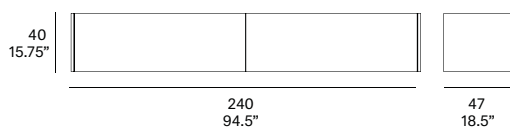
indoor

Team

2-door hanging module / módulo suspensión 2 puertas

Mario Ruiz, 2017

T881



Furniture system made of solid wood from European oaks. Possibility to customize the top by using different upholstery. The collection is also available in a lacquered version (MDF).

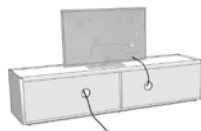
Sistema de mobiliario fabricado en madera maciza de roble europeo. Posibilidad de personalizar la tapa mediante el empleo de múltiples tapizados. La colección también está disponible en versión lacada (MDF).

Shipment details

Qty	1 hanging module (1 box)
Volume	0,60 m ³ / 21.2 ft ³
Gross weight	88 kg / 194 lb
Net weight	81 kg / 178.6 lb
Item dimensions - with base (width x depth x height)	240 x 47 x 40 cm 94.5" x 18.5" x 15.75"



STANDARD



SPECIAL

All units are manufactured WITH NO STANDARD CABLE GROMMETS. If needed, please indicate the place and position before placing an order.

Todos los muebles contenedores SE SIRVEN SIN AGUJEROS PASACABLES. Indicar lugar y posición en caso de necesidad.

expormim

Expormim S.A.
Pol. Ind. Jaime I
46640 Moixent (Valencia) Spain
+34 962 295 144/5
export@expormim.com
www.expormim.com

Expormim USA LLC
(212) 204-8572
usa@expormim.com
www.expormim.com

1/4

indoor

solid wood / madera



W01 natural oak



W03 light oak



W02 white stained



W04 black stained

Lacquered

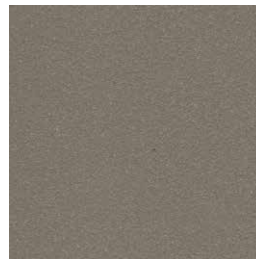
textured lacquers



LT02 light grey



LT09 champagne



LT10 bronze

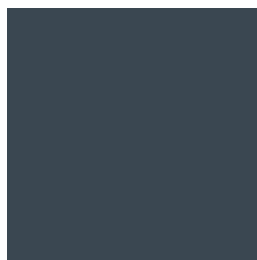


LT11 graphite

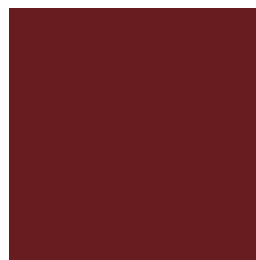
lacquers



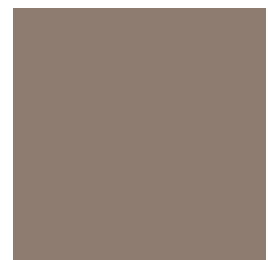
L17 forest green



L16 navy blue



L14 japanese red



L5 taupe

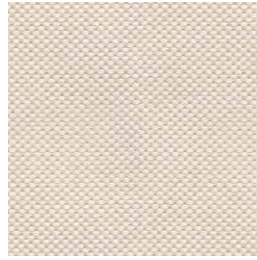
indoor

Upholstered top / tapa tapizada

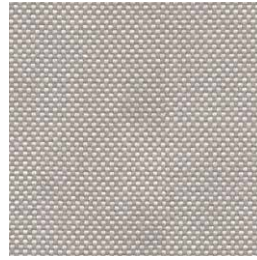
group 1 - natté Sunbrella®



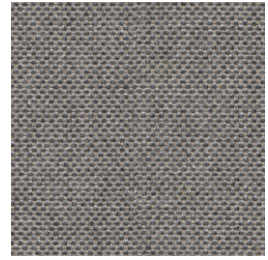
natté white



natté canvas



natté taupe chalk



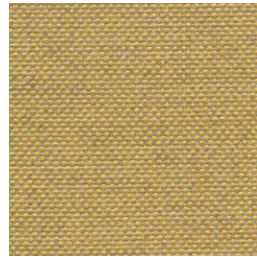
natté carbon beige



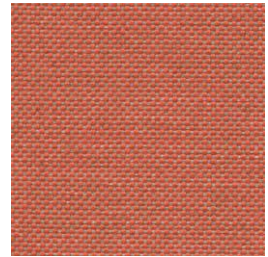
natté dark taupe



natté carbon sky



natté amber



natté flamingo

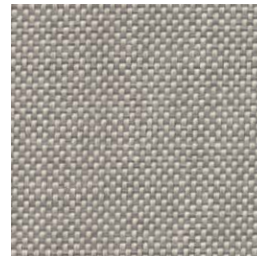
group 1 - dolce Crevin®



dolce 07



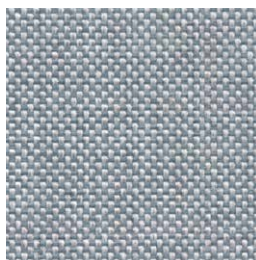
dolce 16



dolce 75



dolce 53



dolce 43



dolce 24



dolce 30

indoor

Upholstered top / tapa tapizada

group 1 - valencia™ faux leather



valencia 1049



valencia 0020

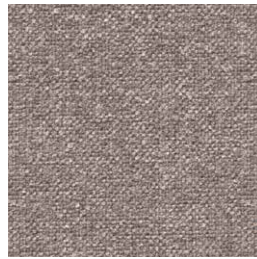


valencia 9035

group 2 - ito Crevin®



ito 05



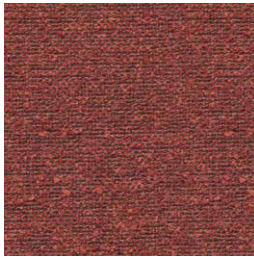
ito 18



ito 12



ito 71



ito 21



ito 20



ito 38



ito 45

group 2 - sacco Crevin®



sacco 02



sacco 05



sacco 11