

indoor

# Falcata indoor

## Rectangular dining table / mesa rectangular



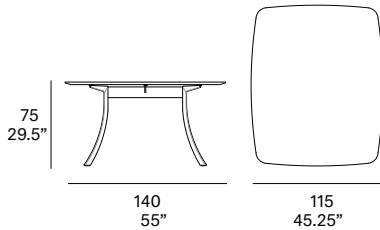
Lievore Altherr Molina, 2017

T920 140



Tabletop made of solid wood from European oaks with 21 mm/0.83" of section. Structure made of high resistance aluminum profile and legs of injected aluminum, finished with polyester powder. The collection is also available in a lacquered version (MDF) and in European oak plywood. Optional junction box with 2 sockets F CEE and 2 USB charger. Delivered unassembled.

Tapa fabricada en madera maciza de roble europeo de 21 mm de sección. Estructura en perfilaría de aluminio de alta resistencia y patas en inyección de aluminio, con acabado en pintura de polvo de poliéster. La colección también está disponible en versión lacada (MDF) y en tablero contrachapado de roble europeo. Caja de conexiones opcional con 2 enchufes F CEE y 2 cargadores USB. Se sirven desmontadas.

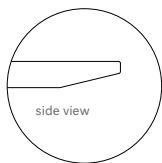


### Shipment details

Qty	1 dining table (2 boxes)
Volume	0,49 m <sup>3</sup> / 17.3 ft <sup>3</sup>
Gross weight	48 kg / 105.8 lb
Net weight	33 kg / 72.8 lb

Item dimensions (width x depth x height)	140 x 115 x 75 cm 55" x 45.25" x 29.5"
---	---

Tabletop options:



- solid wood top 21 mm/0.83" thick.
- veneered top 21 mm/0.83" thick.
- lacquered top 21 mm/0.83" thick.



\*Position of the junction box. For sockets and plugs other than type F CEE, please check availability / Posición de la caja de conexiones. Para bases de enchufe y clavijas distintas al tipo F CEE consultar disponibilidad.

**expormim**

Expormim S.A.  
Pol. Ind. Jaime I  
46640 Moixent (Valencia) Spain  
+34 962 295 144/5  
export@expormim.com  
www.expormim.com

Expormim USA LLC  
(212) 204-8572  
usa@expormim.com  
www.expormim.com

1/7

indoor

**Tabletop / tapa de mesa**

**solid wood / madera**



W01 natural oak



W03 light oak



W02 white stained



W04 black stained

**veneered / contrachapado**



W01 natural oak



W03 light oak



W02 white stained



W04 black stained



indoor

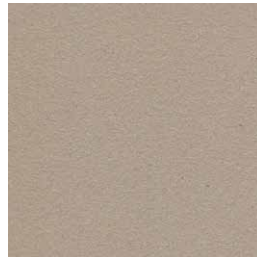
**Tabletop / tapa de mesa**

**textured lacquers**

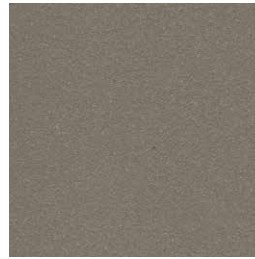
Lacquered top (MDF) / tapa lacada (MDF)



LT02 light grey



LT09 champagne



LT10 bronze



LT11 graphite

**lacquers**

Lacquered top (MDF) / tapa lacada (MDF)



L17 forest green



L16 navy blue



L14 japanese red



L5 taupe

indoor

**Legs / patas**

**Metallic finishes / metales**



102 FT light grey  
fine textured



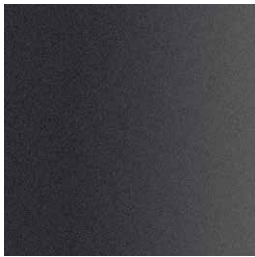
109 FT champagne  
fine textured



110 FT bronze  
fine textured



108 FT oxide  
fine textured



111 FT graphite  
fine textured

indoor

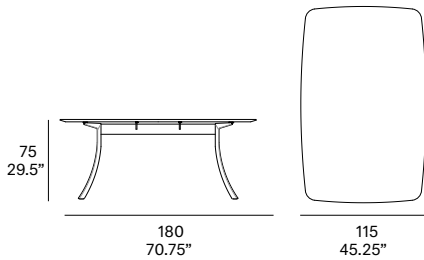
# Falcata indoor

## Rectangular dining table / mesa rectangular

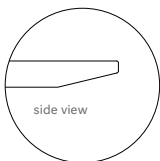


Lievore Altherr Molina, 2017

T920 180



Tabletop options:



- solid wood top 21 mm/0.83" thick.
- veneered top 21 mm/0.83" thick.
- lacquered top 21 mm/0.83" thick.



\*Position of the junction box. For sockets and plugs other than type F CEE, please check availability / Posición de la caja de conexiones. Para bases de enchufe y clavijas distintas al tipo F CEE consultar disponibilidad.

Tabletop made of solid wood from European oaks with 21 mm/0.83" of section. Structure made of high resistance aluminum profile and legs of injected aluminum, finished with polyester powder. The collection is also available in a lacquered version (MDF) and in European oak plywood. Optional junction box with 2 sockets F CEE and 2 USB charger. Delivered unassembled.

Tapa fabricada en madera maciza de roble europeo de 21 mm de sección. Estructura en perfilaría de aluminio de alta resistencia y patas en inyección de aluminio, con acabado en pintura de polvo de poliéster. La colección también está disponible en versión lacada (MDF) y en tablero contrachapado de roble europeo. Caja de conexiones opcional con 2 enchufes F CEE y 2 cargadores USB. Se sirven desmontadas.

### Shipment details

Qty	1 dining table (2 boxes)
Volume	0,60 m <sup>3</sup> / 21.2 ft <sup>3</sup>
Gross weight	57 kg / 125.7 lb
Net weight	41 kg / 90.4 lb
Item dimensions (width x depth x height)	180 x 115 x 75 cm 70.75" x 45.25" x 29.5"

**expormim**

Expormim S.A.  
Pol. Ind. Jaime I  
46640 Moixent (Valencia) Spain  
+34 962 295 144/5  
export@expormim.com  
www.expormim.com

Expormim USA LLC  
(212) 204-8572  
usa@expormim.com  
www.expormim.com

2/7

indoor

**Tabletop / tapa de mesa**

**solid wood / madera**



W01 natural oak



W03 light oak



W02 white stained



W04 black stained

**veneered / contrachapado**



W01 natural oak



W03 light oak



W02 white stained



W04 black stained



indoor

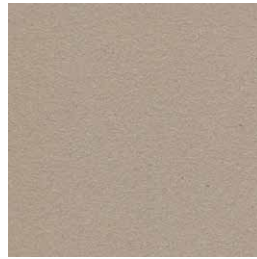
**Tabletop / tapa de mesa**

**textured lacquers**

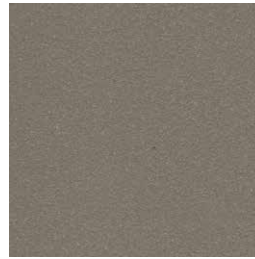
Lacquered top (MDF) / tapa lacada (MDF)



LT02 light grey



LT09 champagne



LT10 bronze



LT11 graphite

**lacquers**

Lacquered top (MDF) / tapa lacada (MDF)



L17 forest green



L16 navy blue



L14 japanese red



L5 taupe

indoor

**Legs / patas**

**Metallic finishes / metales**



102 FT light grey  
fine textured



109 FT champagne  
fine textured



110 FT bronze  
fine textured



108 FT oxide  
fine textured



111 FT graphite  
fine textured



indoor

# Falcata indoor

## Rectangular dining table / mesa rectangular



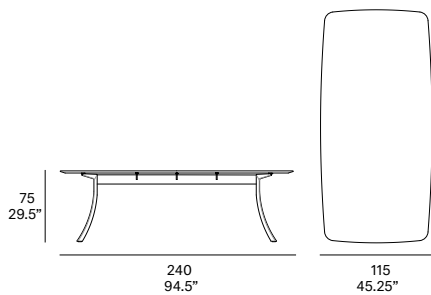
Lievore Altherr Molina, 2017

T920 240



Tabletop made of solid wood from European oaks with 21 mm/0.83" of section. Structure made of high resistance aluminum profile and legs of injected aluminum, finished with polyester powder. The collection is also available in a lacquered version (MDF) and in European oak plywood. Optional junction box with 2 sockets F CEE and 2 USB charger. Delivered unassembled.

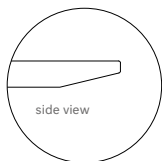
Tapa fabricada en madera maciza de roble europeo de 21 mm de sección. Estructura en perfilaría de aluminio de alta resistencia y patas en inyección de aluminio, con acabado en pintura de polvo de poliéster. La colección también está disponible en versión lacada (MDF) y en tablero contrachapado de roble europeo. Caja de conexiones opcional con 2 enchufes F CEE y 2 cargadores USB. Se sirven desmontadas.



### Shipment details

Qty	1 dining table (3 boxes)
Volume	0,80 m <sup>3</sup> / 28.3 ft <sup>3</sup>
Gross weight	58 kg / 127.9 lb
Net weight	51 kg / 112.4 lb
Item dimensions (width x depth x height)	240 x 115 x 75 cm 94.5" x 45.25" x 29.5"

Tabletop options:



- solid wood top 21 mm/0.83" thick.
- veneered top 21 mm/0.83" thick.
- lacquered top 21 mm/0.83" thick.



\*Position of the junction box. For sockets and plugs other than type F CEE, please check availability / Posición de la caja de conexiones. Para bases de enchufe y clavijas distintas al tipo F CEE consultar disponibilidad.

**expormim**

Expormim S.A.  
Pol. Ind. Jaime I  
46640 Moixent (Valencia) Spain  
+34 962 295 144/5  
export@expormim.com  
www.expormim.com

Expormim USA LLC  
(212) 204-8572  
usa@expormim.com  
www.expormim.com

3/7

indoor

**Tabletop / tapa de mesa**

**solid wood / madera**



W01 natural oak



W03 light oak



W02 white stained



W04 black stained

**veneered / contrachapado**



W01 natural oak



W03 light oak



W02 white stained



W04 black stained



indoor

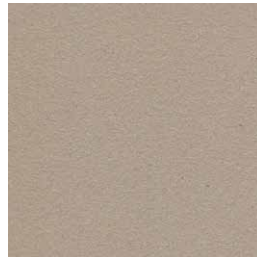
**Tabletop / tapa de mesa**

**textured lacquers**

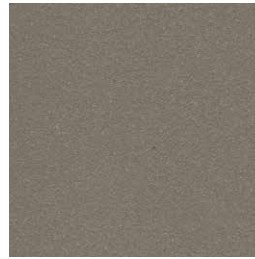
Lacquered top (MDF) / tapa lacada (MDF)



LT02 light grey



LT09 champagne



LT10 bronze



LT11 graphite

**lacquers**

Lacquered top (MDF) / tapa lacada (MDF)



L17 forest green



L16 navy blue



L14 japanese red



L5 taupe

indoor

**Legs / patas**

**Metallic finishes / metales**



102 FT light grey  
fine textured



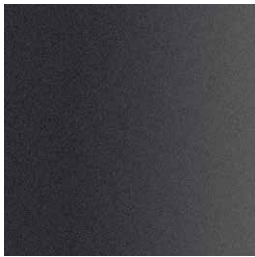
109 FT champagne  
fine textured



110 FT bronze  
fine textured



108 FT oxide  
fine textured



111 FT graphite  
fine textured

indoor

# Falcata indoor

## Rectangular dining table / mesa rectangular



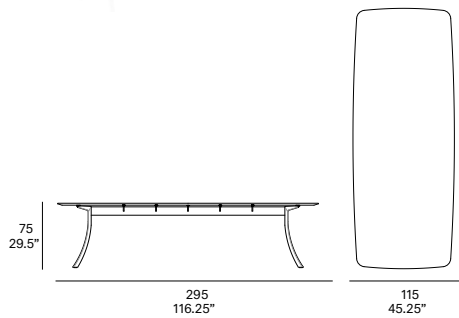
Lievore Altherr Molina, 2017

T920 295



Tabletop made of solid wood from European oaks with 21 mm/0.83" of section. Structure made of high resistance aluminum profile and legs of injected aluminum, finished with polyester powder. The collection is also available in a lacquered version (MDF) and in European oak plywood. Optional junction box with 2 sockets F CEE and 2 USB charger. Delivered unassembled.

Tapa fabricada en madera maciza de roble europeo de 21 mm de sección. Estructura en perfilaría de aluminio de alta resistencia y patas en inyección de aluminio, con acabado en pintura de polvo de poliéster. La colección también está disponible en versión lacada (MDF) y en tablero contrachapado de roble europeo. Caja de conexiones opcional con 2 enchufes F CEE y 2 cargadores USB. Se sirven desmontadas.

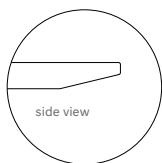


### Shipment details

Qty	1 dining table (3 boxes)
Volume	0,97 m <sup>3</sup> / 34.3 ft <sup>3</sup>
Gross weight	80 kg / 176.4 lb
Net weight	61 kg / 134.5 lb

Item dimensions (width x depth x height)	295 x 115 x 75 cm 116.25" x 45.25" x 29.5"
---	---

Tabletop options:



- solid wood top 21 mm/0.83" thick.
- veneered top 21 mm/0.83" thick.
- lacquered top 21 mm/0.83" thick.



\*Position of the junction box. For sockets and plugs other than type F CEE, please check availability / Posición de la caja de conexiones. Para bases de enchufe y clavijas distintas al tipo F CEE consultar disponibilidad.

**expormim**

Expormim S.A.  
Pol. Ind. Jaime I  
46640 Moixent (Valencia) Spain  
+34 962 295 144/5  
export@expormim.com  
www.expormim.com

Expormim USA LLC  
(212) 204-8572  
usa@expormim.com  
www.expormim.com

4/7

indoor

**Tabletop / tapa de mesa**

**solid wood / madera**



W01 natural oak



W03 light oak



W02 white stained



W04 black stained

**veneered / contrachapado**



W01 natural oak



W03 light oak



W02 white stained



W04 black stained



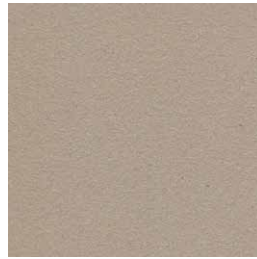
indoor

**Tabletop / tapa de mesa**

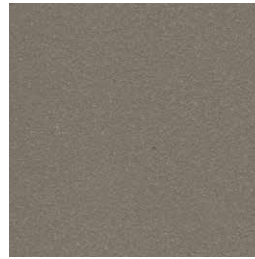
**textured lacquers**  
Lacquered top (MDF) / tapa lacada (MDF)



LT02 light grey



LT09 champagne



LT10 bronze



LT11 graphite

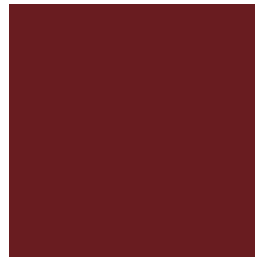
**lacquers**  
Lacquered top (MDF) / tapa lacada (MDF)



L17 forest green



L16 navy blue



L14 japanese red



L5 taupe

indoor

**Legs / patas**

**Metallic finishes / metales**



102 FT light grey  
fine textured



109 FT champagne  
fine textured



110 FT bronze  
fine textured



108 FT oxide  
fine textured



111 FT graphite  
fine textured



indoor

# Falcata indoor

## Elliptical dining table / mesa elíptica

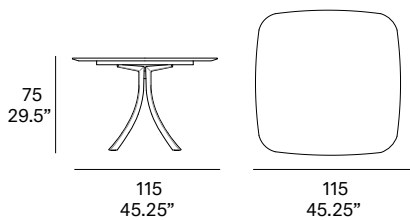
Lievore Altherr Molina, 2017

T934 E



Tabletop made of solid wood from European oaks with 21 mm/0.83" of section. Structure made of high resistance aluminum profile and legs of injected aluminum, finished with polyester powder. The collection is also available in a lacquered version (MDF) and in European oak plywood. Delivered unassembled.

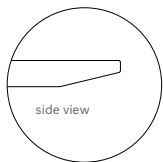
Tapa fabricada en madera maciza de roble europeo de 21 mm de sección. Estructura en perfilaría de aluminio de alta resistencia y patas en inyección de aluminio, con acabado en pintura de polvo de poliéster. La colección también está disponible en versión lacada (MDF) y en tablero contrachapado de roble europeo. Se sirven desmontadas.



### Shipment details

Qty	1 dining table (2 boxes)
Volume	0,44 m <sup>3</sup> / 15.5 ft <sup>3</sup>
Gross weight	47 kg / 103.6 lb
Net weight	35 kg / 77.2 lb
Item dimensions (width x depth x height)	115 x 115 x 75 cm 45.25" x 45.25" x 29.5"

Tabletop options:



- solid wood top 21 mm/0.83" thick.
- veneered top 21 mm/0.83" thick.
- lacquered top 21 mm/0.83" thick.

**expormim**

Expormim S.A.  
Pol. Ind. Jaime I  
46640 Moixent (Valencia) Spain  
+34 962 295 144/5  
export@expormim.com  
www.expormim.com

Expormim USA LLC  
(212) 204-8572  
usa@expormim.com  
www.expormim.com

1/4

indoor

**Tabletop / tapa de mesa**

**solid wood / madera**



W01 natural oak



W03 light oak



W02 white stained



W04 black stained

**veneered / contrachapado**



W01 natural oak



W03 light oak



W02 white stained



W04 black stained



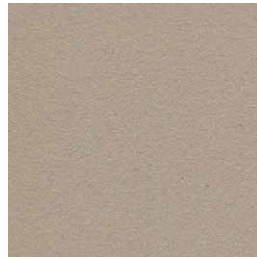
indoor

**Tabletop / tapa de mesa**

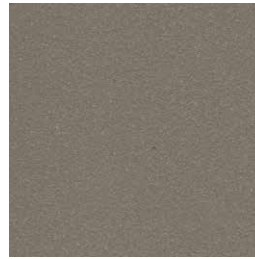
**textured lacquers**  
Lacquered top (MDF) / tapa lacada (MDF)



LT02 light grey



LT09 champagne



LT10 bronze



LT11 graphite

**lacquers**  
Lacquered top (MDF) / tapa lacada (MDF)



L17 forest green



L16 navy blue



L14 japanese red



L5 taupe

indoor

**Legs / patas**

**Metallic finishes / metales**



102 FT light grey  
fine textured



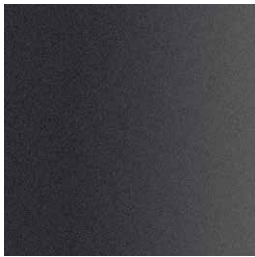
109 FT champagne  
fine textured



110 FT bronze  
fine textured



108 FT oxide  
fine textured



111 FT graphite  
fine textured

indoor

# Falcata indoor

## Round dining table / mesa redonda

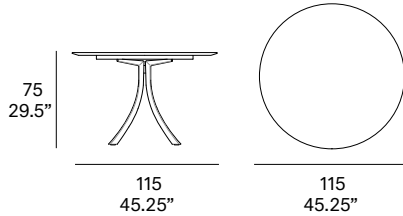
Lievore Altherr Molina, 2017

T934 R



Tabletop made of solid wood from European oaks with 21 mm/0.83" of section. Structure made of high resistance aluminum profile and legs of injected aluminum, finished with polyester powder. The collection is also available in a lacquered version (MDF) and in European oak plywood. Delivered unassembled.

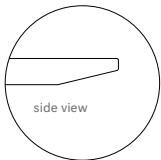
Tapa fabricada en madera maciza de roble europeo de 21 mm de sección. Estructura en perfilaría de aluminio de alta resistencia y patas en inyección de aluminio, con acabado en pintura de políester. La colección también está disponible en versión lacada (MDF) y en tablero contrachapado de roble europeo. Se sirven desmontadas.



### Shipment details

Qty	1 dining table (2 boxes)
Volume	0,44 m <sup>3</sup> / 15.5 ft <sup>3</sup>
Gross weight	44 kg / 97 lb
Net weight	32 kg / 70.5 lb
Item dimensions (width x depth x height)	115 x 115 x 75 cm 45.25" x 45.25" x 29.5"

Tabletop options:



- solid wood top 21 mm/0.83" thick.
- veneered top 21 mm/0.83" thick.
- lacquered top 21 mm/0.83" thick.

**expormim**

Expormim S.A.  
Pol. Ind. Jaime I  
46640 Moixent (Valencia) Spain  
+34 962 295 144/5  
export@expormim.com  
www.expormim.com

Expormim USA LLC  
(212) 204-8572  
usa@expormim.com  
www.expormim.com

1/4

indoor

**Tabletop / tapa de mesa**

**solid wood / madera**



W01 natural oak



W03 light oak



W02 white stained



W04 black stained

**veneered / contrachapado**



W01 natural oak



W03 light oak



W02 white stained



W04 black stained



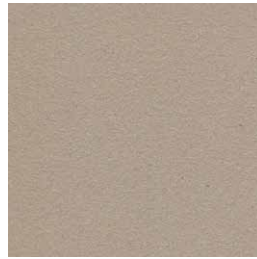
indoor

**Tabletop / tapa de mesa**

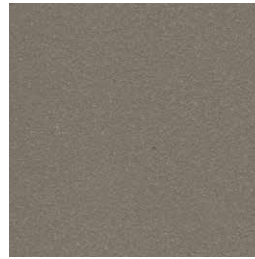
**textured lacquers**  
Lacquered top (MDF) / tapa lacada (MDF)



LT02 light grey



LT09 champagne



LT10 bronze



LT11 graphite

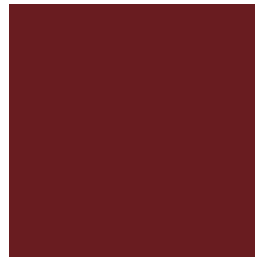
**lacquers**  
Lacquered top (MDF) / tapa lacada (MDF)



L17 forest green



L16 navy blue



L14 japanese red



L5 taupe

indoor

**Legs / patas**

**Metallic finishes / metales**



102 FT light grey  
fine textured



109 FT champagne  
fine textured



110 FT bronze  
fine textured



108 FT oxide  
fine textured



111 FT graphite  
fine textured



outdoor

# Falcata outdoor

## Elliptical dining table / mesa elíptica

Lievore Altherr Molina 2016

C935 E

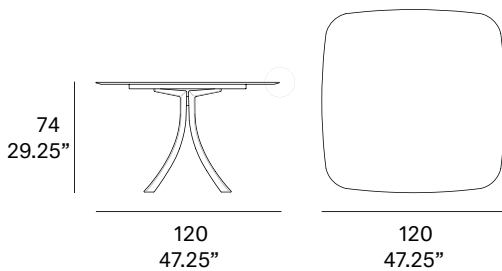


Dining table with structure made of high resistance aluminum profile and legs of injected aluminum, finished with polyester powder. Tabletop options: HPL Trespa® 13 mm/0.51" thick and FENIX NTM® 12 mm/0.47". Delivered unassembled.

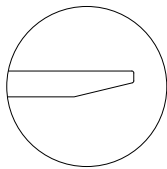
Mesa con estructura en perfilería de aluminio de alta resistencia y patas en inyección de aluminio, acabado en pintura de polvo de poliéster. Opciones de tablero: HPL Trespa® de 13 mm y FENIX NTM® de 12 mm. Se sirven desmontadas.

### Shipment details

Qty	1 dining table (2 boxes)
Volume	0,57 m3 / 20.1 ft3
Gross weight	47 kg / 103.5 lb
Net weight	32 kg / 70.5 lb
Item dimensions (width x depth x height)	120 x 120 x 74 cm 47.25" x 47.25" x 29.25"



Tabletop options:



- HPL Trespa® 13 mm/0.51" thick.
- FENIX NTM® 12 mm/0.47" thick.

**expormim**

Expormim S.A.  
Pol. Ind. Jaime I  
46640 Moixent (Valencia) Spain  
+34 962 295 144/5  
export@expormim.com  
www.expormim.com

Expormim USA LLC  
(212) 204-8572  
usa@expormim.com  
www.expormim.com

1/2

outdoor

**Frame / estructura**

**metallic finishes / metales**



120 FT off white  
fine textured



124 FT linen  
fine textured



102 FT light grey  
fine textured



113 FT sage  
fine textured



110 FT bronze  
fine textured



108 FT oxide  
fine textured



111 FT graphite  
fine textured

**top / tapa**

**HPL Trespa® - premium**



320 silver quartzite - matt



323 natural chalkstone - matt



327 titanium bronze - satin

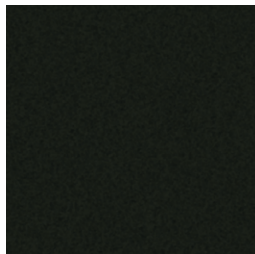


321 italian slate - matt

**FENIX NTM®**



029 bianco male



720 nero ingo

outdoor

# Falcata outdoor

## Round dining table / mesa redonda

Lievore Altherr Molina 2016

C935 R

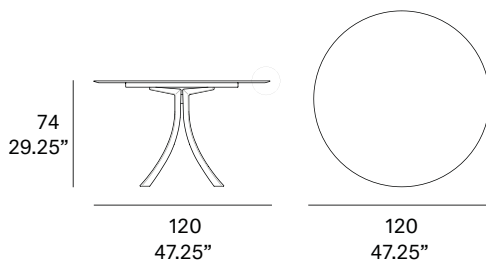


Dining table with structure made of high resistance aluminum profile and legs of injected aluminum, finished with polyester powder. Tabletop options: HPL Trespa® 13 mm/0.51" thick and FENIX NTM® 12 mm/0.47". Delivered unassembled.

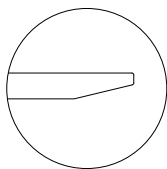
Mesa con estructura en perfilera de aluminio de alta resistencia y patas en inyección de aluminio, acabado en pintura de polvo de poliéster. Opciones de tablero: HPL Trespa® de 13 mm y FENIX NTM® de 12 mm. Se sirven desmontadas.

### Shipment details

Qty	1 dining table (2 boxes)
Volume	0,57 m3 / 20.1 ft3
Gross weight	45 kg / 99 lb
Net weight	30 kg / 66 lb
Item dimensions (width x depth x height)	120 x 120 x 74 cm 47.25" x 47.25" x 29.25"



Tabletop options:



- HPL Trespa® 13 mm/0.51" thick.
- FENIX NTM® 12 mm/0.47" thick.

**expormim**

Expormim S.A.  
Pol. Ind. Jaime I  
46640 Moixent (Valencia) Spain  
+34 962 295 144/5  
export@expormim.com  
www.expormim.com

Expormim USA LLC  
(212) 204-8572  
usa@expormim.com  
www.expormim.com

1/2

outdoor

**Frame / estructura**

**metallic finishes / metales**



120 FT off white  
fine textured



124 FT linen  
fine textured



102 FT light grey  
fine textured



113 FT sage  
fine textured



110 FT bronze  
fine textured



108 FT oxide  
fine textured



111 FT graphite  
fine textured

**top / tapa**

**HPL Trespa® - premium**



320 silver quartzite - matt



323 natural chalkstone - matt

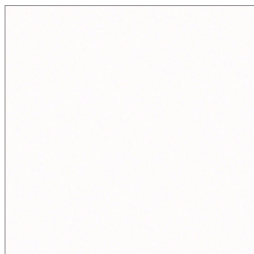


327 titanium bronze - satin

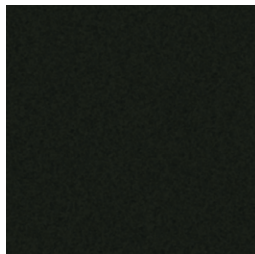


321 italian slate - matt

**FENIX NTM®**



029 bianco male



720 nero ingo

outdoor

# Falcata outdoor

## Rectangular dining table / mesa rectangular

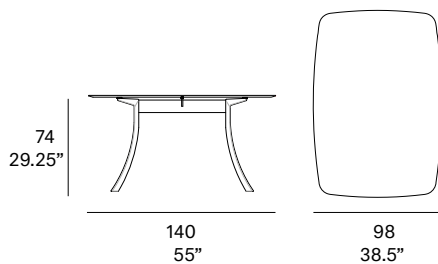
Lievore Altherr Molina 2016

C923

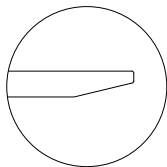


Dining table with structure made of high resistance aluminum profile and legs of injected aluminum, finished with polyester powder. Tabletop options: HPL Trespa® 13 mm/0.51" thick, FENIX NTM® 12 mm/0.47" thick and Dekton® 8 mm/0.31" thick. Delivered unassembled.

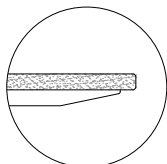
Mesa con estructura en perfilera de aluminio de alta resistencia y patas en inyección de aluminio, acabado en pintura de polvo de poliéster. Opciones de tablero: HPL Trespa® de 13 mm, FENIX NTM® de 12 mm y Dekton® de 8 mm. Se sirven desmontadas.



Tabletop options:



- HPL Trespa® 13 mm/0.51" thick.
- FENIX NTM® 12 mm/0.47" thick.



- Dekton® 8 mm/0.31" +  
HPL Trespa® 8 mm/0.31" thick.

### Shipment details

Qty 1 dining table (2 boxes)

Volume 0,48 m3 / 17 ft3

#### HPL / FENIX Top option

Gross weight 52 kg / 114.5 lb

Net weight 32 kg / 70.5 lb

#### Dekton Top option

Gross weight 72 kg / 159 lb

Net weight 52 kg / 115 lb

Item dimensions 140 x 98 x 74 cm  
(width x depth x height) 55" x 38.5" x 29.25"

### Awards



**expormim**

Expormim S.A.  
Pol. Ind. Jaime I  
46640 Moixent (Valencia) Spain  
+34 962 295 144/5  
export@expormim.com  
www.expormim.com

Expormim USA LLC  
(212) 204-8572  
usa@expormim.com  
www.expormim.com

1/3

**Frame / estructura**

**metallic finishes / metales**



120 FT off white  
fine textured



124 FT linen  
fine textured



102 FT light grey  
fine textured



113 FT sage  
fine textured



110 FT bronze  
fine textured



108 FT oxide  
fine textured



111 FT graphite  
fine textured

outdoor

top / tapa

HPL Trespa® - premium



320 silver quartzite - matt



323 natural chalkstone - matt



327 titanium bronze - satin



321 italian slate - matt

FENIX NTM®



029 bianco male



720 nero ingo

Dekton® - kraftizen



K1 albarium



K2 argentium



K3 umber

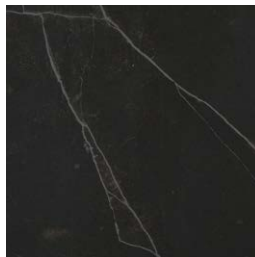


K4 micron

Dekton® - natural



D3 danae



D2 kelya

**expormim**

Expormim S.A.  
Pol. Ind. Jaime I  
46640 Moixent (Valencia) Spain  
+34 962 295 144/5  
export@expormim.com  
www.expormim.com

Expormim USA LLC  
(212) 204-8572  
usa@expormim.com  
www.expormim.com

3/3

outdoor

# Falcata outdoor

## Rectangular dining table / mesa rectangular

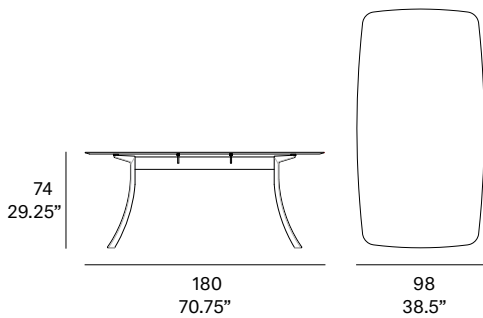
Lievore Altherr Molina 2016

C924



Dining table with structure made of high resistance aluminum profile and legs of injected aluminum, finished with polyester powder. Tabletop options: HPL Trespa® 13 mm/0.51" thick, FENIX NTM® 12 mm/0.47" thick and Dekton® 8 mm/0.31" thick. Delivered unassembled.

Mesa con estructura en perfilera de aluminio de alta resistencia y patas en inyección de aluminio, acabado en pintura de polvo de poliéster. Opciones de tablero: HPL Trespa® de 13 mm, FENIX NTM® de 12 mm y Dekton® de 8 mm. Se sirven desmontadas.



### Shipment details

Qty	1 dining table (2 boxes)
Volume	0,52 m3 / 18.4 ft3

### HPL / FENIX Top option

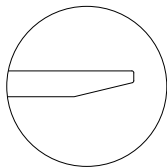
Gross weight	64 kg / 141 lb
Net weight	39 kg / 86 lb

### Dekton Top option

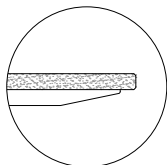
Gross weight	90 kg / 198 lb
Net weight	65 kg / 143 lb

Item dimensions (width x depth x height)	180 x 98 x 74 cm 70.75" x 38.5" x 29.25"
---	---

Tabletop options:



- HPL Trespa® 13 mm/0.51" thick.
- FENIX NTM® 12 mm/0.47" thick.



- Dekton® 8 mm/0.31" +  
HPL Trespa® 8 mm/0.31" thick.

### Awards



expormim

Expormim S.A.  
Pol. Ind. Jaime I  
46640 Moixent (Valencia) Spain  
+34 962 295 144/5  
export@expormim.com  
www.expormim.com

Expormim USA LLC  
(212) 204-8572  
usa@expormim.com  
www.expormim.com

1/3



**Frame / estructura**

**metallic finishes / metales**



120 FT off white  
fine textured



124 FT linen  
fine textured



102 FT light grey  
fine textured



113 FT sage  
fine textured



110 FT bronze  
fine textured



108 FT oxide  
fine textured



111 FT graphite  
fine textured

outdoor

top / tapa

HPL Trespa® - premium



320 silver quartzite - matt



323 natural chalkstone - matt



327 titanium bronze - satin



321 italian slate - matt

FENIX NTM®



029 bianco male



720 nero ingo

Dekton® - kraftizen



K1 albarium



K2 argentium



K3 umber



K4 micron

Dekton® - natural



D3 danae



D2 kelya

**expormim**

Expormim S.A.  
Pol. Ind. Jaime I  
46640 Moixent (Valencia) Spain  
+34 962 295 144/5  
export@expormim.com  
www.expormim.com

Expormim USA LLC  
(212) 204-8572  
usa@expormim.com  
www.expormim.com

3/3

outdoor

# Falcata outdoor

## Rectangular dining table / mesa rectangular

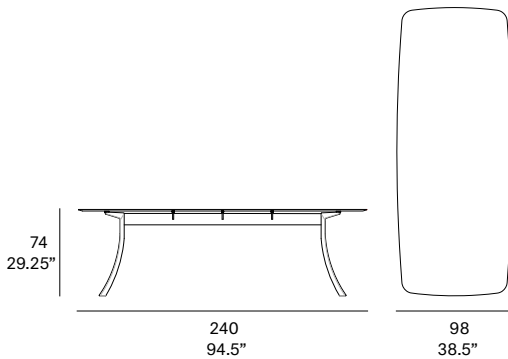
Lievore Altherr Molina 2016

C925



Dining table with structure made of high resistance aluminum profile and legs of injected aluminum, finished with polyester powder. Tabletop options: HPL Trespa® 13 mm/0.51" thick, FENIX NTM® 12 mm/0.47" thick and Dekton® 8 mm/0.31" thick. Delivered unassembled.

Mesa con estructura en perfilera de aluminio de alta resistencia y patas en inyección de aluminio, acabado en pintura de polvo de poliéster. Opciones de tablero: HPL Trespa® de 13 mm, FENIX NTM® de 12 mm y Dekton® de 8 mm. Se sirven desmontadas.



### Shipment details

Qty 1 dining table (2 boxes)

Volume 0,76 m3 / 26.8 ft3

#### HPL / FENIX Top option

Gross weight 84 kg / 185 lb

Net weight 49 kg / 108 lb

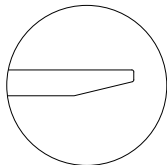
#### Dekton Top option

Gross weight 119 kg / 262 lb

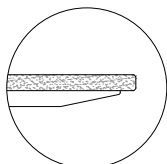
Net weight 80 kg / 176 lb

Item dimensions 240 x 98 x 74 cm  
(width x depth x height) 94.5" x 38.5" x 29.25"

#### Tabletop options:



- HPL Trespa® 13 mm/0.51" thick.  
- FENIX NTM® 12 mm/0.47" thick.



- Dekton® 8 mm/0.31" +  
HPL Trespa® 8 mm/0.31" thick.

### HEAVY FURNITURE

#### Awards



expormim

Expormim S.A.  
Pol. Ind. Jaime I  
46640 Moixent (Valencia) Spain  
+34 962 295 144/5  
export@expormim.com  
www.expormim.com

Expormim USA LLC  
(212) 204-8572  
usa@expormim.com  
www.expormim.com

1/3

**Frame / estructura**

**metallic finishes / metales**



120 FT off white  
fine textured



124 FT linen  
fine textured



102 FT light grey  
fine textured



113 FT sage  
fine textured



110 FT bronze  
fine textured



108 FT oxide  
fine textured



111 FT graphite  
fine textured

outdoor

top / tapa

HPL Trespa® - premium



320 silver quartzite - matt



323 natural chalkstone - matt



327 titanium bronze - satin



321 italian slate - matt

FENIX NTM®



029 bianco male



720 nero ingo

Dekton® - kraftizen



K1 albarium



K2 argentium



K3 umber



K4 micron

Dekton® - natural



D3 danae



D2 kelya

**expormim**

Expormim S.A.  
Pol. Ind. Jaime I  
46640 Moixent (Valencia) Spain  
+34 962 295 144/5  
export@expormim.com  
www.expormim.com

Expormim USA LLC  
(212) 204-8572  
usa@expormim.com  
www.expormim.com

3/3

outdoor

# Falcata outdoor

## Rectangular dining table / mesa rectangular

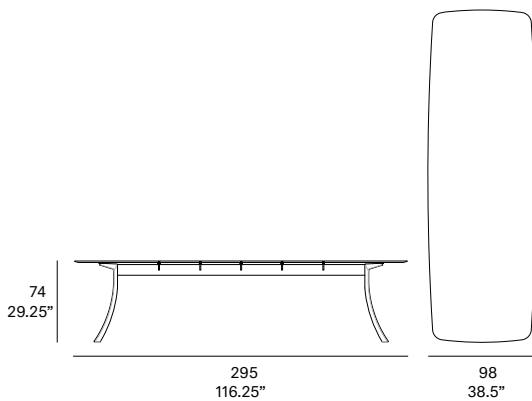
Lievore Altherr Molina 2016

C926



Dining table with structure made of high resistance aluminum profile and legs of injected aluminum, finished with polyester powder. Tabletop options: HPL Trespa® 13 mm/0.51" thick, FENIX NTM® 12 mm/0.47" thick and Dekton® 8 mm/0.31" thick. Delivered unassembled.

Mesa con estructura en perfilería de aluminio de alta resistencia y patas en inyección de aluminio, acabado en pintura de polvo de poliéster. Opciones de tablero: HPL Trespa® de 13 mm, FENIX NTM® de 12 mm y Dekton® de 8 mm. Se sirven desmontadas.



### Shipment details

Qty 1 dining table (2 boxes)

Volume 0,90 m3 / 31.8 ft3

#### HPL / FENIX Top option

Gross weight 100 kg / 220 lb

Net weight 58 kg / 128 lb

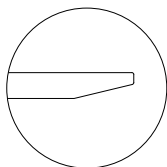
#### Dekton Top option

Gross weight 136 kg / 300 lb

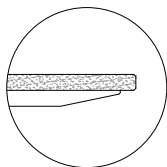
Net weight 93 kg / 205 lb

Item dimensions 295 x 98 x 74 cm  
(width x depth x height) 116.25" x 38.5" x 29.25"

Tabletop options:



- HPL Trespa® 13 mm/0.51" thick.  
- FENIX NTM® 12 mm/0.47" thick.



- Dekton® 8 mm/0.31" +  
HPL Trespa® 8 mm/0.31" thick.

### HEAVY FURNITURE

#### Awards



expormim

Expormim S.A.  
Pol. Ind. Jaime I  
46640 Moixent (Valencia) Spain  
+34 962 295 144/5  
export@expormim.com  
www.expormim.com

Expormim USA LLC  
(212) 204-8572  
usa@expormim.com  
www.expormim.com

1/2

**Frame / estructura**

**metallic finishes / metales**



120 FT off white  
fine textured



124 FT linen  
fine textured



102 FT light grey  
fine textured



113 FT sage  
fine textured



110 FT bronze  
fine textured



108 FT oxide  
fine textured



111 FT graphite  
fine textured

outdoor

top / tapa

HPL Trespa® - premium



320 silver quartzite - matt



323 natural chalkstone - matt



327 titanium bronze - satin



321 italian slate - matt

FENIX NTM®



029 bianco male



720 nero ingo

Dekton® - kraftizen



K1 albarium



K2 argentium



K3 umber

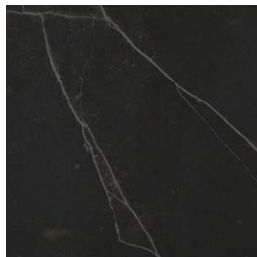


K4 micron

Dekton® - natural



D3 danae



D2 kelya

**expormim**

Expormim S.A.  
Pol. Ind. Jaime I  
46640 Moixent (Valencia) Spain  
+34 962 295 144/5  
export@expormim.com  
www.expormim.com

Expormim USA LLC  
(212) 204-8572  
usa@expormim.com  
www.expormim.com

3/3



outdoor

# Falcata outdoor

## Rectangular dining table / mesa rectangular

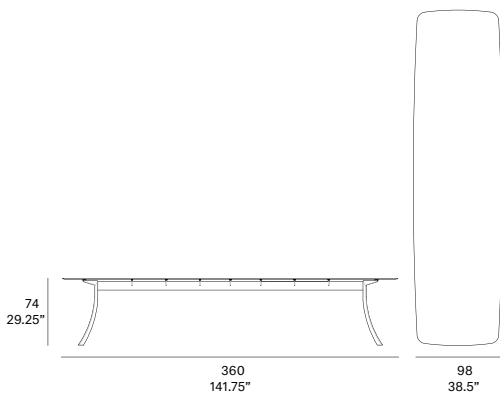
Lievore Altherr Molina 2016

C927



Dining table with structure made of high resistance aluminum profile and legs of injected aluminum, finished with polyester powder. Tabletop options: HPL Trespa® 13 mm/0.51" thick and FENIX NTM® 12 mm/0.47". Delivered unassembled.

Mesa con estructura en perfilería de aluminio de alta resistencia y patas en inyección de aluminio, acabado en pintura de polvo de poliéster. Opciones de tablero: HPL Trespa® de 13 mm y FENIX NTM® de 12 mm. Se sirven desmontadas.



### Shipment details

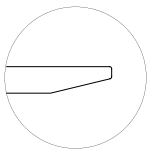
Qty	1 dining table (2 boxes)
Volume	0,83 m3 / 29.3 ft3
HPL / FENIX Top option	
Gross weight	110 kg / 243 lb
Net weight	68 kg / 150 lb

Item dimensions (width x depth x height)	360 x 98 x 74 cm 141.75" x 38.5" x 29.25"
---	--

### HEAVY FURNITURE

### Awards

Tabletop options:



- HPL Trespa® 13 mm/0.51" thick.
- FENIX NTM® 12 mm/0.47" thick.



**expormim**

Expormim S.A.  
Pol. Ind. Jaime I  
46640 Moixent (Valencia) Spain  
+34 962 295 144/5  
export@expormim.com  
www.expormim.com

Expormim USA LLC  
(212) 204-8572  
usa@expormim.com  
www.expormim.com

1/2

outdoor

**Frame / estructura**

**metallic finishes / metales**



120 FT off white  
fine textured



124 FT linen  
fine textured



102 FT light grey  
fine textured



113 FT sage  
fine textured



110 FT bronze  
fine textured



108 FT oxide  
fine textured



111 FT graphite  
fine textured

**top / tapa**

**HPL Trespa® - premium**



320 silver quartzite - matt



323 natural chalkstone - matt



327 titanium bronze - satin

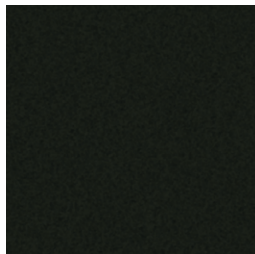


321 italian slate - matt

**FENIX NTM®**



029 bianco male



720 nero ingo