

indoor

Bistro indoor Dining table stand with round top / pie de mesa con tapa redonda

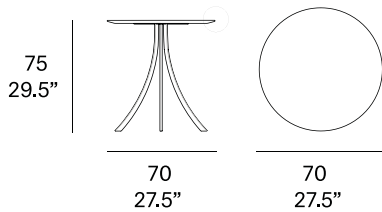
Manel Molina, 2017

T903 R 70



Tabletop made of solid wood from European oaks with 0.83" of section. Structure made of oval stainless steel tube, finished with polyester powder. The collection is also available in a lacquered version (MDF) and in European oak plywood. Delivered unassembled.

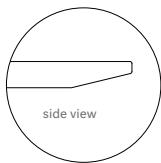
Tapa fabricada en madera maciza de roble europeo de 21 mm de sección. Estructura fabricada en tubo oval de acero inoxidable, con acabado en pintura de polvo de poliéster. La colección está también disponible en versión lacada (MDF) y en tablero contrachapado de roble europeo. Se sirven desmontadas.



Shipment details

Qty	1 dining table (2 boxes)
Volume	0,40 m ³ / 14.1 ft ³
Gross weight	28 kg / 61.7 lb
Net weight	25 kg / 55.1 lb
Item dimensions (width x depth x height)	70 x 70 x 75 cm 27.5" x 27.5" x 29.5"

Tabletop options:



- solid wood top 21 mm/0.83" thick.
- veneered top 21 mm/0.83" thick.
- lacquered top 21 mm/0.83" thick.

expormim

Expormim S.A.
Pol. Ind. Jaime I
46640 Moixent (Valencia) Spain
+34 962 295 144/5
export@expormim.com
www.expormim.com

Expormim USA LLC
(212) 204-8572
usa@expormim.com
www.expormim.com

1/4

indoor

Tabletop / tapa de mesa

solid wood / madera



W01 natural oak



W03 light oak



W02 white stained



W04 black stained

veneered / contrachapado



W01 natural oak



W03 light oak



W02 white stained



W04 black stained



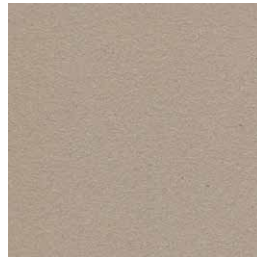
indoor

Tabletop / tapa de mesa

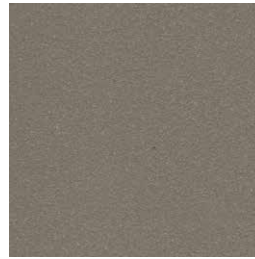
textured lacquers
Lacquered top (MDF) / tapa lacada (MDF)



LT02 light grey



LT09 champagne

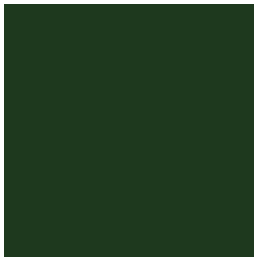


LT10 bronze



LT11 graphite

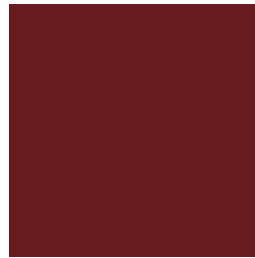
lacquers
Lacquered top (MDF) / tapa lacada (MDF)



L17 forest green



L16 navy blue



L14 japanese red



L5 taupe

indoor

Legs / patas

Metallic finishes / metales



102 FT light grey
fine textured



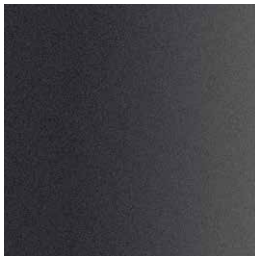
109 FT champagne
fine textured



110 FT bronze
fine textured



108 FT oxide
fine textured



111 FT graphite
fine textured

indoor

Bistro indoor Dining table stand with round top / pie de mesa con tapa redonda

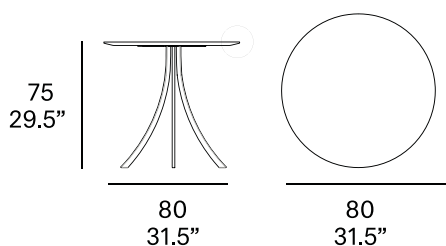
Manel Molina, 2017

T903 R 80



Tabletop made of solid wood from European oaks with 0.83" of section. Structure made of oval stainless steel tube, finished with polyester powder. The collection is also available in a lacquered version (MDF) and in European oak plywood. Delivered unassembled.

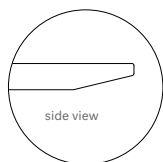
Tapa fabricada en madera maciza de roble europeo de 21 mm de sección. Estructura fabricada en tubo oval de acero inoxidable, con acabado en pintura de polvo de poliéster. La colección está también disponible en versión lacada (MDF) y en tablero contrachapado de roble europeo. Se sirven desmontadas.



Shipment details

Qty	1 dining table (2 boxes)
Volume	0,41 m ³ / 14.5 ft ³
Gross weight	30 kg / 66.1 lb
Net weight	27 kg / 59.5 lb
Item dimensions (width x depth x height)	80 x 80 x 75 cm 31.5" x 31.5" x 29.5"

Tabletop options:



- solid wood top 21 mm/0.83" thick.

- veneered top 21 mm/0.83" thick.

- lacquered top 21 mm/0.83" thick.

expormim

Expormim S.A.
Pol. Ind. Jaime I
46640 Moixent (Valencia) Spain
+34 962 295 144/5
export@expormim.com
www.expormim.com

Expormim USA LLC
(212) 204-8572
usa@expormim.com
www.expormim.com

1/4

indoor

Tabletop / tapa de mesa

solid wood / madera



W01 natural oak



W03 light oak



W02 white stained



W04 black stained

veneered / contrachapado



W01 natural oak



W03 light oak



W02 white stained



W04 black stained



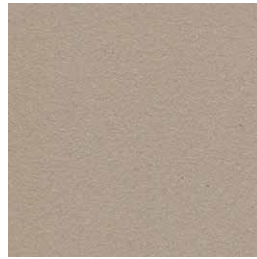
indoor

Tabletop / tapa de mesa

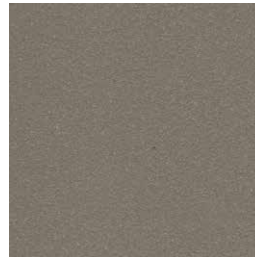
textured lacquers
Lacquered top (MDF) / tapa lacada (MDF)



LT02 light grey



LT09 champagne



LT10 bronze



LT11 graphite

lacquers
Lacquered top (MDF) / tapa lacada (MDF)



L17 forest green



L16 navy blue



L14 japanese red



L5 taupe

indoor

Legs / patas

Metallic finishes / metales



102 FT light grey
fine textured



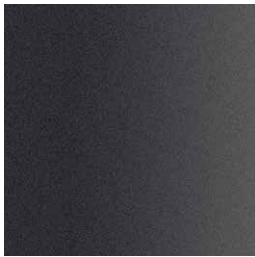
109 FT champagne
fine textured



110 FT bronze
fine textured



108 FT oxide
fine textured



111 FT graphite
fine textured

indoor

Bistro indoor Dining table stand with square top / pie de mesa con tapa cuadrada

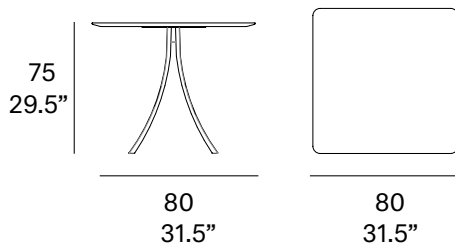
Manel Molina, 2017

T904 C 80



Tabletop made of solid wood from European oaks with 0.83" of section. Structure made of oval stainless steel tube, finished with polyester powder. The collection is also available in a lacquered version (MDF) and in European oak plywood. Delivered unassembled.

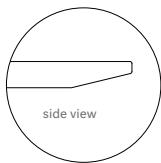
Tapa fabricada en madera maciza de roble europeo de 21 mm de sección. Estructura fabricada en tubo oval de acero inoxidable, con acabado en pintura de polvo de poliéster. La colección está también disponible en versión lacada (MDF) y en tablero contrachapado de roble europeo. Se sirven desmontadas.



Shipment details

Qty	1 dining table (2 boxes)
Volume	0,41 m ³ / 14.5 ft ³
Gross weight	31 kg / 68.3 lb
Net weight	27 kg / 59.5 lb
Item dimensions (width x depth x height)	80 x 80 x 75 cm 31.5" x 31.5" x 29.5"

Tabletop options:



- solid wood top 21 mm/0.83" thick.
- veneered top 21 mm/0.83" thick.
- lacquered top 21 mm/0.83" thick.

expormim

Expormim S.A.
Pol. Ind. Jaime I
46640 Moixent (Valencia) Spain
+34 962 295 144/5
export@expormim.com
www.expormim.com

Expormim USA LLC
(212) 204-8572
usa@expormim.com
www.expormim.com

1/4

indoor

Tabletop / tapa de mesa

solid wood / madera



W01 natural oak



W03 light oak



W02 white stained



W04 black stained

veneered / contrachapado



W01 natural oak



W03 light oak



W02 white stained



W04 black stained



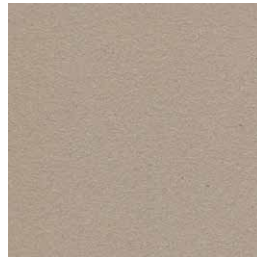
indoor

Tabletop / tapa de mesa

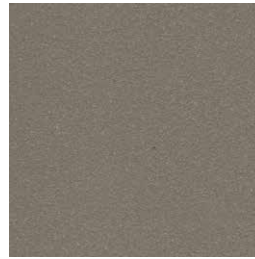
textured lacquers
Lacquered top (MDF) / tapa lacada (MDF)



LT02 light grey



LT09 champagne



LT10 bronze



LT11 graphite

lacquers
Lacquered top (MDF) / tapa lacada (MDF)



L17 forest green



L16 navy blue



L14 japanese red



L5 taupe

indoor

Legs / patas

Metallic finishes / metales



102 FT light grey
fine textured



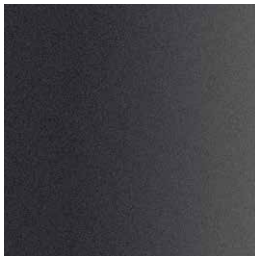
109 FT champagne
fine textured



110 FT bronze
fine textured



108 FT oxide
fine textured



111 FT graphite
fine textured

indoor

Bistro indoor

Dining table stand with square top / pie de mesa con tapa cuadrada

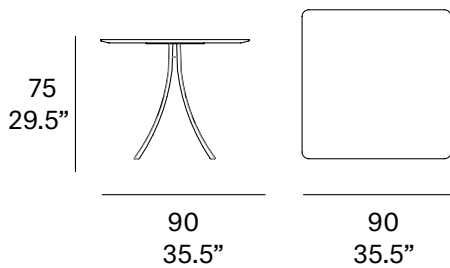
Manel Molina, 2017

T904 C 90



Tabletop made of solid wood from European oaks with 0.83" of section. Structure made of oval stainless steel tube, finished with polyester powder. The collection is also available in a lacquered version (MDF) and in European oak plywood. Delivered unassembled.

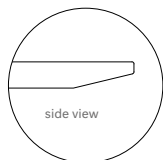
Tapa fabricada en madera maciza de roble europeo de 21 mm de sección. Estructura fabricada en tubo oval de acero inoxidable, con acabado en pintura de polvo de poliéster. La colección está también disponible en versión lacada (MDF) y en tablero contrachapado de roble europeo. Se sirven desmontadas.



Shipment details

Qty	1 dining table (2 boxes)
Volume	0,42 m ³ / 14.8 ft ³
Gross weight	35 kg / 77.2 lb
Net weight	31 kg / 68.3 lb
Item dimensions (width x depth x height)	90 x 90 x 75 cm 31.5" x 31.5" x 29.5"

Tabletop options:



- solid wood top 21 mm/0.83" thick.
- veneered top 21 mm/0.83" thick.
- lacquered top 21 mm/0.83" thick.

expormim

Expormim S.A.
Pol. Ind. Jaime I
46640 Moixent (Valencia) Spain
+34 962 295 144/5
export@expormim.com
www.expormim.com

Expormim USA LLC
(212) 204-8572
usa@expormim.com
www.expormim.com

1/4

indoor

Tabletop / tapa de mesa

solid wood / madera



W01 natural oak



W03 light oak



W02 white stained



W04 black stained

veneered / contrachapado



W01 natural oak



W03 light oak



W02 white stained



W04 black stained



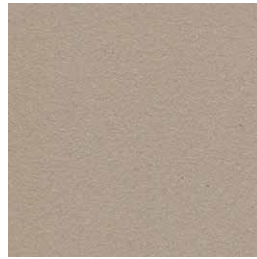
indoor

Tabletop / tapa de mesa

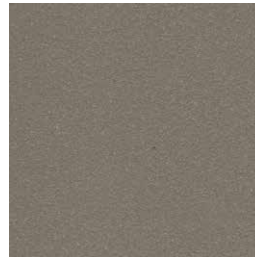
textured lacquers
Lacquered top (MDF) / tapa lacada (MDF)



LT02 light grey



LT09 champagne



LT10 bronze



LT11 graphite

lacquers
Lacquered top (MDF) / tapa lacada (MDF)



L17 forest green



L16 navy blue



L14 japanese red



L5 taupe

indoor

Legs / patas

Metallic finishes / metales



102 FT light grey
fine textured



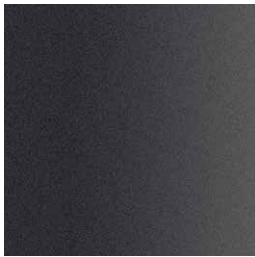
109 FT champagne
fine textured



110 FT bronze
fine textured



108 FT oxide
fine textured



111 FT graphite
fine textured

indoor

Bistro indoor Dining table stand with elliptical top / pie de mesa con tapa elíptica

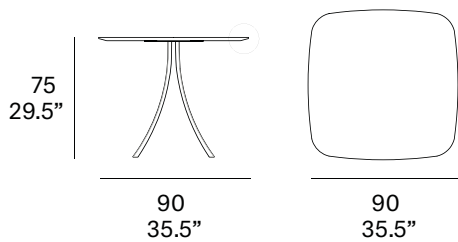
Manel Molina, 2017

T904 E 90



Tabletop made of solid wood from European oaks with 0.83" of section. Structure made of oval stainless steel tube, finished with polyester powder. The collection is also available in a lacquered version (MDF) and in European oak plywood. Delivered unassembled.

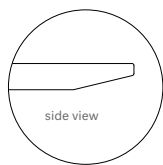
Tapa fabricada en madera maciza de roble europeo de 21 mm de sección. Estructura fabricada en tubo oval de acero inoxidable, con acabado en pintura de polvo de poliéster. La colección está también disponible en versión lacada (MDF) y en tablero contrachapado de roble europeo. Se sirven desmontadas.



Shipment details

Qty	1 dining table (2 boxes)
Volume	0,42 m ³ / 14.8 ft ³
Gross weight	35 kg / 77.2 lb
Net weight	31 kg / 68.3 lb
Item dimensions (width x depth x height)	90 x 90 x 75 cm 35.5" x 35.5" x 29.5"

Tabletop options:



- solid wood top 21 mm/0.83" thick.
- veneered top 21 mm/0.83" thick.
- lacquered top 21 mm/0.83" thick.

expormim

Expormim S.A.
Pol. Ind. Jaime I
46640 Moixent (Valencia) Spain
+34 962 295 144/5
export@expormim.com
www.expormim.com

Expormim USA LLC
(212) 204-8572
usa@expormim.com
www.expormim.com

1/4

indoor

Tabletop / tapa de mesa

solid wood / madera



W01 natural oak



W03 light oak



W02 white stained



W04 black stained

veneered / contrachapado



W01 natural oak



W03 light oak



W02 white stained



W04 black stained



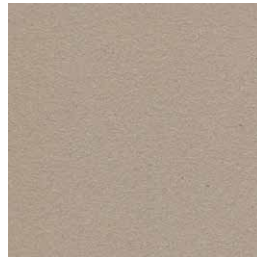
indoor

Tabletop / tapa de mesa

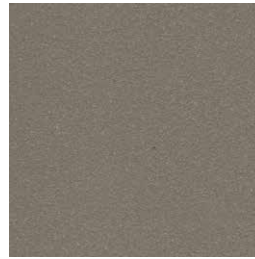
textured lacquers
Lacquered top (MDF) / tapa lacada (MDF)



LT02 light grey



LT09 champagne

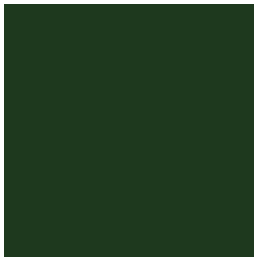


LT10 bronze



LT11 graphite

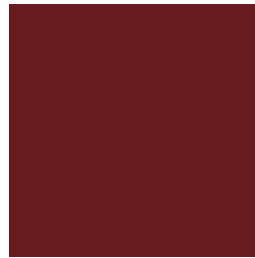
lacquers
Lacquered top (MDF) / tapa lacada (MDF)



L17 forest green



L16 navy blue



L14 japanese red



L5 taupe

indoor

Legs / patas

Metallic finishes / metales



102 FT light grey
fine textured



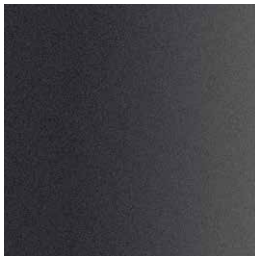
109 FT champagne
fine textured



110 FT bronze
fine textured



108 FT oxide
fine textured



111 FT graphite
fine textured

indoor

Bistro indoor Dining table stand with round top / pie de mesa con tapa redonda

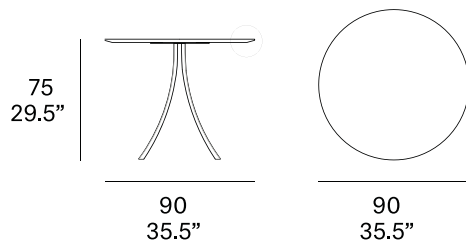
Manel Molina, 2017

T904 R 90



Tabletop made of solid wood from European oaks with 0.83" of section. Structure made of oval stainless steel tube, finished with polyester powder. The collection is also available in a lacquered version (MDF) and in European oak plywood. Delivered unassembled.

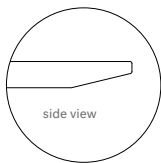
Tapa fabricada en madera maciza de roble europeo de 21 mm de sección. Estructura fabricada en tubo oval de acero inoxidable, con acabado en pintura de polvo de poliéster. La colección está también disponible en versión lacada (MDF) y en tablero contrachapado de roble europeo. Se sirven desmontadas.



Shipment details

Qty	1 dining table (2 boxes)
Volume	0,42 m ³ / 14.8 ft ³
Gross weight	33 kg / 72.8 lb
Net weight	29 kg / 63.9 lb
Item dimensions (width x depth x height)	90 x 90 x 75 cm 35.5" x 35.5" x 29.5"

Tabletop options:



- solid wood top 21 mm/0.83" thick.
- veneered top 21 mm/0.83" thick.
- lacquered top 21 mm/0.83" thick.

expormim

Expormim S.A.
Pol. Ind. Jaime I
46640 Moixent (Valencia) Spain
+34 962 295 144/5
export@expormim.com
www.expormim.com

Expormim USA LLC
(212) 204-8572
usa@expormim.com
www.expormim.com

1/4

indoor

Tabletop / tapa de mesa

solid wood / madera



W01 natural oak



W03 light oak



W02 white stained



W04 black stained

veneered / contrachapado



W01 natural oak



W03 light oak



W02 white stained



W04 black stained



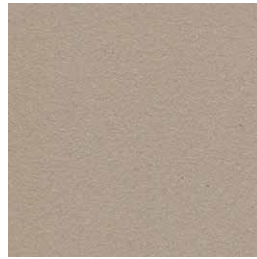
indoor

Tabletop / tapa de mesa

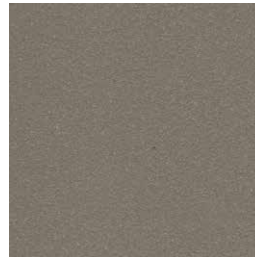
textured lacquers
Lacquered top (MDF) / tapa lacada (MDF)



LT02 light grey



LT09 champagne



LT10 bronze



LT11 graphite

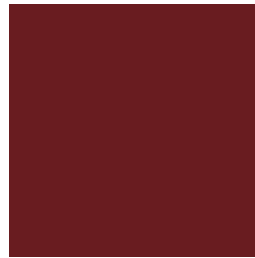
lacquers
Lacquered top (MDF) / tapa lacada (MDF)



L17 forest green



L16 navy blue



L14 japanese red



L5 taupe

indoor

Legs / patas

Metallic finishes / metales



102 FT light grey
fine textured



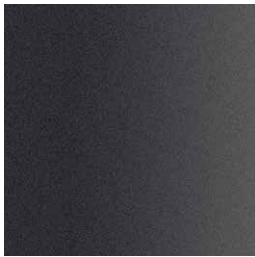
109 FT champagne
fine textured



110 FT bronze
fine textured



108 FT oxide
fine textured



111 FT graphite
fine textured

outdoor

Bistro outdoor

Dining table stand with round top / pie de mesa con tapa redonda

Manel Molina 2017

C903 R 70



Structure made of oval stainless steel tube, finished with polyester powder. Tabletop options: HPL Trespa® 13 mm/0.51" thick, FENIX NTM® 12 mm/0.47" thick and Dekton® 8 mm/0.31" thick. Delivered unassembled.

Estructura fabricada en tubo oval de acero inoxidable, acabado en pintura de polvo de poliéster. Opciones de tablero: HPL Trespa® de 13 mm, FENIX NTM® de 12 mm y Dekton® de 8 mm. Se sirven desmontadas.

Shipment details

Qty 1 dining table (1 box)

Volume 0,38 m³ / 13.4 ft³

HPL / FENIX Top option

Gross weight 20 kg / 44 lb

Net weight 14 kg / 31 lb

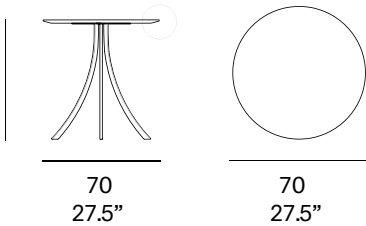
Dekton Top option

Gross weight 26 kg / 57.3 lb

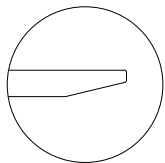
Net weight 20 kg / 44 lb

Item dimensions (width x depth x height) 70 x 70 x 74 cm
27.5" x 27.5" x 29.25"

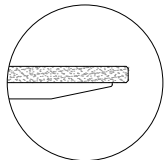
74
29.25"



Tabletop options:



- HPL Trespa® 13 mm/0.51" thick.
- FENIX NTM® 12 mm/0.47" thick.



- Dekton® 8 mm/0.31" +
HPL Trespa® 8 mm/0.31" thick.



60
23.5"

3 legs

expormim

Expormim S.A.
Pol. Ind. Jaime I
46640 Moixent (Valencia) Spain
+34 962 295 144/5
export@expormim.com
www.expormim.com

Expormim USA LLC
(212) 204-8572
usa@expormim.com
www.expormim.com

1/3

Frame / estructura

metallic finishes / metales



120 FT off white
fine textured



124 FT linen
fine textured



102 FT light grey
fine textured



113 FT sage
fine textured



110 FT bronze
fine textured



108 FT oxide
fine textured



111 FT graphite
fine textured

outdoor

top / tapa

HPL Trespa® - premium



320 silver quartzite - matt



323 natural chalkstone - matt



327 titanium bronze - satin



321 italian slate - matt

FENIX NTM®



029 bianco male



720 nero ingo

Dekton® - kraftizen



K1 albarium



K2 argentium



K3 umber



K4 micron

Dekton® - natural



D3 danae



D2 kelya

expormim

Expormim S.A.
Pol. Ind. Jaime I
46640 Moixent (Valencia) Spain
+34 962 295 144/5
export@expormim.com
www.expormim.com

Expormim USA LLC
(212) 204-8572
usa@expormim.com
www.expormim.com

3/3

outdoor

Bistro outdoor

Dining table stand with round top / pie de mesa con tapa redonda

Manel Molina 2017

C903 R 80



Structure made of oval stainless steel tube, finished with polyester powder. Tabletop options: HPL Trespa® 13 mm/0.51" thick, FENIX NTM® 12 mm/0.47" thick and Dekton® 8 mm/0.31" thick. Delivered unassembled.

Estructura fabricada en tubo oval de acero inoxidable, acabado en pintura de polvo de poliéster. Opciones de tablero: HPL Trespa® de 13 mm, FENIX NTM® de 12 mm y Dekton® de 8 mm. Se sirven desmontadas.

Shipment details

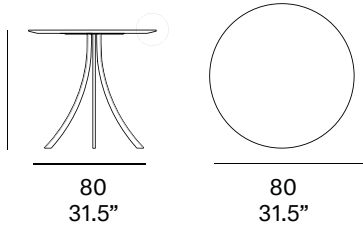
Qty	1 dining table (1 box)
Volume	0,39 m ³ / 18.8 ft ³
HPL / FENIX Top option	
Gross weight	22 kg / 49 lb
Net weight	16 kg / 35.3 lb

Dekton Top option

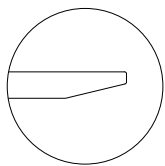
Gross weight	29 kg / 64 lb
Net weight	23kg / 51 lb

Item dimensions (width x depth x height)	80 x 80 x 74 cm 31.5" x 31.5" x 29.25"
---	---

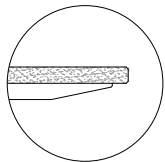
74
29.25"



Tabletop options:



- HPL Trespa® 13 mm/0.51" thick.
- FENIX NTM® 12 mm/0.47" thick.



- Dekton® 8 mm/0.31" +
HPL Trespa® 8 mm/0.31" thick.



60
23.5"

3 legs

expormim

Expormim S.A.
Pol. Ind. Jaime I
46640 Moixent (Valencia) Spain
+34 962 295 144/5
export@expormim.com
www.expormim.com

Expormim USA LLC
(212) 204-8572
usa@expormim.com
www.expormim.com

1/3

Frame / estructura

metallic finishes / metales



120 FT off white
fine textured



124 FT linen
fine textured



102 FT light grey
fine textured



113 FT sage
fine textured



110 FT bronze
fine textured



108 FT oxide
fine textured



111 FT graphite
fine textured

outdoor

top / tapa

HPL Trespa® - premium



320 silver quartzite - matt



323 natural chalkstone - matt



327 titanium bronze - satin



321 italian slate - matt

FENIX NTM®



029 bianco male



720 nero ingo

Dekton® - kraftizen



K1 albarium



K2 argentium



K3 umber



K4 micron

Dekton® - natural



D3 danae



D2 kelya

expormim

Expormim S.A.
Pol. Ind. Jaime I
46640 Moixent (Valencia) Spain
+34 962 295 144/5
export@expormim.com
www.expormim.com

Expormim USA LLC
(212) 204-8572
usa@expormim.com
www.expormim.com

3/3

outdoor

Bistro outdoor

Dining table stand with square top / pie de mesa con tapa cuadrada

Manel Molina 2017

C904 C 80

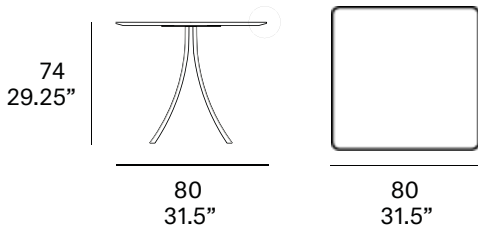


Structure made of oval stainless steel tube, finished with polyester powder. Tabletop options: HPL Trespa® 13 mm/0.51" thick and FENIX NTM® 12 mm/0.47" thick. Delivered unassembled.

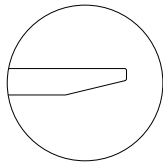
Estructura fabricada en tubo oval de acero inoxidable, acabado en pintura de polvo de poliéster. Opciones de tablero: HPL Trespa® de 13 mm y FENIX NTM® de 12 mm. Se sirven desmontadas.

Shipment details

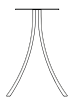
Qty	1 dining table (2 boxes)
Volume	0,39 m ³ / 13.8 ft ³
Gross weight	20 kg / 44 lb
Net weight	14 kg / 30 lb
Item dimensions (width x depth x height)	80 x 80 x 74 cm 31.5" x 31.5" x 29.25"



Tabletop options:



- HPL Trespa® 13 mm/0.51" thick.
- FENIX NTM® 12 mm/0.47" thick.



50
19.75"
4 legs

expormim

Expormim S.A.
Pol. Ind. Jaime I
46640 Moixent (Valencia) Spain
+34 962 295 144/5
export@expormim.com
www.expormim.com

Expormim USA LLC
(212) 204-8572
usa@expormim.com
www.expormim.com

1/3

Frame / estructura

metallic finishes / metales



120 FT off white
fine textured



124 FT linen
fine textured



102 FT light grey
fine textured



113 FT sage
fine textured



110 FT bronze
fine textured



108 FT oxide
fine textured



111 FT graphite
fine textured

outdoor

top / tapa

HPL Trespa® - premium



320 silver quartzite - matt



323 natural chalkstone - matt



327 titanium bronze - satin



321 italian slate - matt

FENIX NTM®



029 bianco male



720 nero ingo

outdoor

Bistro outdoor

Dining table stand with square top / pie de mesa con tapa cuadrada

Manel Molina 2017

C904 C 90

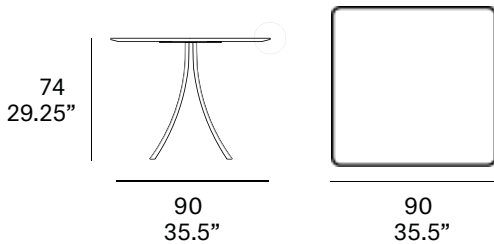


Structure made of oval stainless steel tube, finished with polyester powder. Tabletop options: HPL Trespa® 13 mm/0.51" thick and FENIX NTM® 12 mm/0.47" thick. Delivered unassembled.

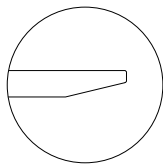
Estructura fabricada en tubo oval de acero inoxidable, acabado en pintura de polvo de poliéster. Opciones de tablero: HPL Trespa® de 13 mm y FENIX NTM® de 12 mm. Se sirven desmontadas.

Shipment details

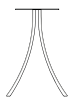
Qty	1 dining table (2 boxes)
Volume	0,40 m ³ / 14.1 ft ³
Gross weight	22 kg / 48 lb
Net weight	16 kg / 35 lb
Item dimensions (width x depth x height)	90 x 90 x 74 cm 35.5" x 35.5" x 29.25"



Tabletop options:



- HPL Trespa® 13 mm/0.51" thick.
- FENIX NTM® 12 mm/0.47" thick.



50
19.75"
4 legs

expormim

Expormim S.A.
Pol. Ind. Jaime I
46640 Moixent (Valencia) Spain
+34 962 295 144/5
export@expormim.com
www.expormim.com

Expormim USA LLC
(212) 204-8572
usa@expormim.com
www.expormim.com

1/2

outdoor

Frame / estructura

metallic finishes / metales



120 FT off white
fine textured



124 FT linen
fine textured



102 FT light grey
fine textured



113 FT sage
fine textured



110 FT bronze
fine textured



108 FT oxide
fine textured



111 FT graphite
fine textured

top / tapa

HPL Trespa® - premium



320 silver quartzite - matt



323 natural chalkstone - matt

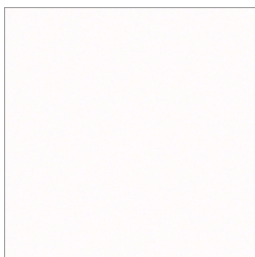


327 titanium bronze - satin

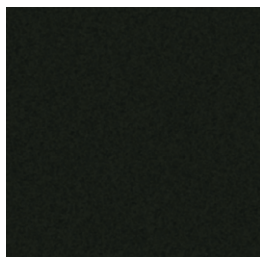


321 italian slate - matt

FENIX NTM®



029 bianco male



720 nero ingo

outdoor

Bistro outdoor

Dining table stand with elliptical top / pie de mesa con tapa elíptica

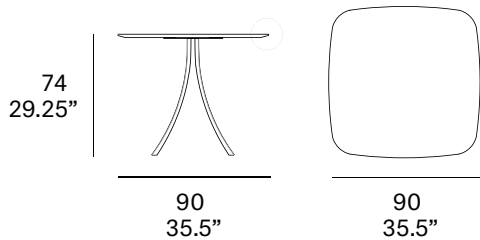
Manel Molina 2017

C904 E 90

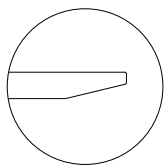


Structure made of oval stainless steel tube, finished with polyester powder. Tabletop options: HPL Trespa® 13 mm/0.51" thick, FENIX NTM® 12 mm/0.47" thick and Dekton® 8 mm/0.31" thick. Delivered unassembled.

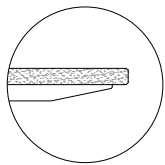
Estructura fabricada en tubo oval de acero inoxidable, acabado en pintura de polvo de poliéster. Opciones de tablero: HPL Trespa® de 13 mm, FENIX NTM® de 12 mm y Dekton® de 8 mm. Se sirven desmontadas.



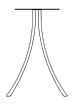
Tabletop options:



- HPL Trespa® 13 mm/0.51" thick.
- FENIX NTM® 12 mm/0.47" thick.



- Dekton® 8 mm/0.31" +
HPL Trespa® 8 mm/0.31" thick.



50
19.75"
4 legs

Shipment details

Qty 1 dining table (2 boxes)

Volume 0,40 m³ / 14.1 ft³

HPL / FENIX Top option

Gross weight 30 kg / 66 lb

Net weight 21 kg / 46 lb

Dekton Top option

Gross weight 40 kg / 88 lb

Net weight 31 kg / 68 lb

Item dimensions

(width x depth x height)

90 x 90 x 74 cm

35.5" x 35.5" x 29.25"

expormim

Expormim S.A.
Pol. Ind. Jaime I
46640 Moixent (Valencia) Spain
+34 962 295 144/5
export@expormim.com
www.expormim.com

Expormim USA LLC
(212) 204-8572
usa@expormim.com
www.expormim.com

1/3

Frame / estructura

metallic finishes / metales



120 FT off white
fine textured



124 FT linen
fine textured



102 FT light grey
fine textured



113 FT sage
fine textured



110 FT bronze
fine textured



108 FT oxide
fine textured



111 FT graphite
fine textured

outdoor

top / tapa

HPL Trespa® - premium



320 silver quartzite - matt



323 natural chalkstone - matt



327 titanium bronze - satin



321 italian slate - matt

FENIX NTM®



029 bianco male



720 nero ingo

Dekton® - kraftizen



K1 albarium



K2 argentium



K3 umber



K4 micron

Dekton® - natural



D3 danae



D2 kelya

expormim

Expormim S.A.
Pol. Ind. Jaime I
46640 Moixent (Valencia) Spain
+34 962 295 144/5
export@expormim.com
www.expormim.com

Expormim USA LLC
(212) 204-8572
usa@expormim.com
www.expormim.com

3/3

outdoor

Bistro outdoor

Dining table stand with round top / pie de mesa con tapa redonda

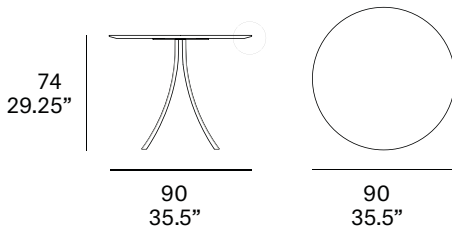
Manel Molina 2017

C904 R 90

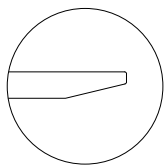


Structure made of oval stainless steel tube, finished with polyester powder. Tabletop options: HPL Trespa® 13 mm/0.51" thick, FENIX NTM® 12 mm/0.47" thick and Dekton® 8 mm/0.31" thick. Delivered unassembled.

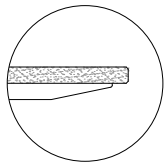
Estructura fabricada en tubo oval de acero inoxidable, acabado en pintura de polvo de poliéster. Opciones de tablero: HPL Trespa® de 13 mm, FENIX NTM® de 12 mm y Dekton® de 8 mm. Se sirven desmontadas.



Tabletop options:



- HPL Trespa® 13 mm/0.51" thick.
- FENIX NTM® 12 mm/0.47" thick.



- Dekton® 8 mm/0.31" +
HPL Trespa® 8 mm/0.31" thick.



50
19.75"
4 legs

Shipment details

Qty 1 dining table (2 boxes)

Volume 0,40 m³ / 14.1 ft³

HPL / FENIX Top option

Gross weight 28 kg / 62 lb

Net weight 19 kg / 42 lb

Dekton Top option

Gross weight 36 kg / 80 lb

Net weight 27 kg / 60 lb

Item dimensions

(width x depth x height)

90 x 90 x 74 cm

35.5" x 35.5" x 29.25"

expormim

Expormim S.A.
Pol. Ind. Jaime I
46640 Moixent (Valencia) Spain
+34 962 295 144/5
export@expormim.com
www.expormim.com

Expormim USA LLC
(212) 204-8572
usa@expormim.com
www.expormim.com

1/3

Frame / estructura

metallic finishes / metales



120 FT off white
fine textured



124 FT linen
fine textured



102 FT light grey
fine textured



113 FT sage
fine textured



110 FT bronze
fine textured



108 FT oxide
fine textured



111 FT graphite
fine textured

outdoor

top / tapa

HPL Trespa® - premium



320 silver quartzite - matt



323 natural chalkstone - matt



327 titanium bronze - satin



321 italian slate - matt

FENIX NTM®



029 bianco male



720 nero ingo

Dekton® - kraftizen



K1 albarium



K2 argentium



K3 umber



K4 micron

Dekton® - natural



D3 danae



D2 kelya

expormim

Expormim S.A.
Pol. Ind. Jaime I
46640 Moixent (Valencia) Spain
+34 962 295 144/5
export@expormim.com
www.expormim.com

Expormim USA LLC
(212) 204-8572
usa@expormim.com
www.expormim.com

3/3