

indoor

# Huma

## Dining armchair with metal legs / sillón comedor con patas metálicas

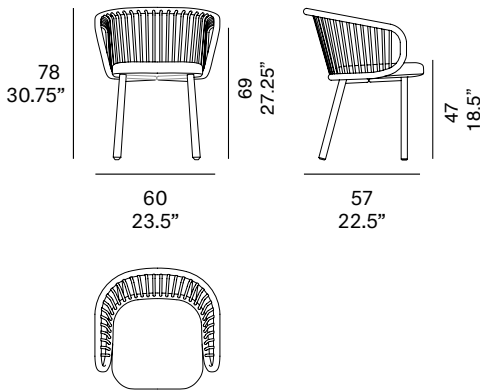
Mario Ruiz, 2015/2021

T070 M



Dining armchair with structure made of peeled and tinted natural rattan of 1.1" diameter. Backrest manufactured in peeled and tinted natural rattan of 0.4" diameter. Finished with a three step water-based coating (dye, base coat and top coat) highly resistant to solar radiation thanks to UV filters. Upholstered seat with metal legs. Possibility of customization through a wide variety of high performance technical fabrics. Plastic protective caps.

Sillón comedor con estructura en rattan natural pelado y tintado de 28 mm de calibre. Respaldo fabricado en rattan natural pelado y tintado de 10 mm de calibre. Acabado con recubrimiento en tres fases (tinte, fondo y acabado) con filtros UV que lo hacen altamente resistente a la radiación solar. Los acabados utilizados son en base al agua. Asiento tapizado y patas metálicas. Posibilidad de personalización mediante una amplia variedad de tejidos técnicos de altas prestaciones de uso. Tacos protectores de plástico.



### Shipment details

Qty	1 dining armchair (1 box)
Volume	0,33 m <sup>3</sup> / 11.7 ft <sup>3</sup>
Gross weight	15 kg / 33.1 lb
Net weight	11 kg / 24.3 lb
Box dimensions (approx.)	65 x 62 x 83 cm 25,5" x 24,5" x 32,75"
Item dimensions (width x depth x height)	60 x 57 x 78 cm 23.5" x 22.5" x 30.75"
COM (1, 40 - 1,50 m / 54"-59")	0,65 m / 0.7 yd

**Rattan**

**tinted**



R10 natural



R03 noce



R06 verde oliva



R08 azzurro



R07 mogano



R24 cinder purple



R23 french grey



R05 grigio



R09 nero

**lacquered**



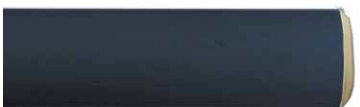
R02 bianco



R22 clay



R17 forest green



R16 navy blue



R14 japanese red



indoor

**Legs / patas**

**metallic finishes / metales**



102 FT light grey  
fine textured



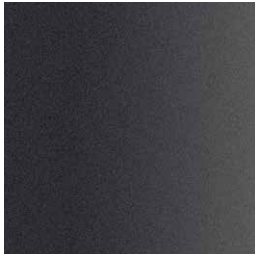
109 FT champagne  
fine textured



110 FT bronze  
fine textured



108 FT oxide  
fine textured



111 FT graphite  
fine textured

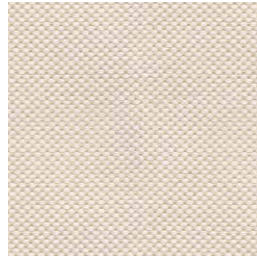
indoor

Cushions / confección

group 1 - natté Sunbrella®



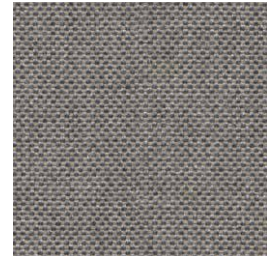
natté white



natté canvas



natté taupe chalk



natté carbon beige



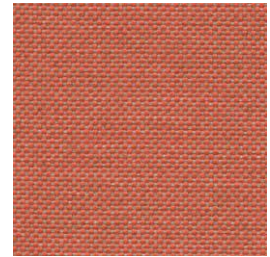
natté dark taupe



natté carbon sky



natté amber



natté flamingo

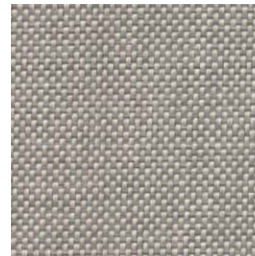
group 1 - dolce Crevin®



dolce 07



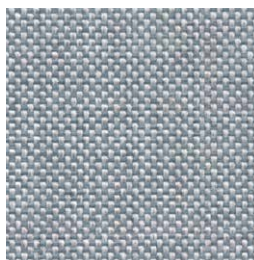
dolce 16



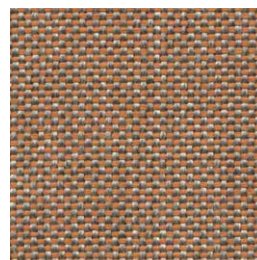
dolce 75



dolce 53



dolce 43



dolce 24



dolce 30

indoor

Cushions / confección

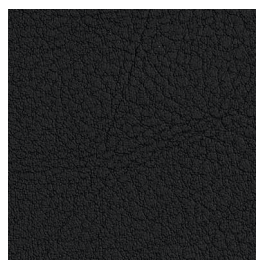
group 1 - valencia™ faux leather



valencia 1049



valencia 0020

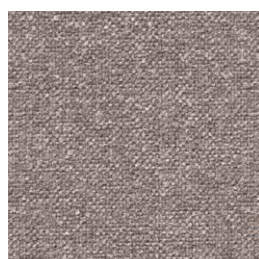


valencia 9035

group 2 - ito Crevin®



ito 05



ito 18



ito 12



ito 71



ito 21



ito 20



ito 38



ito 45

group 2 - sacco Crevin®



sacco 02



sacco 05



sacco 11

**expormim**

Expormim S.A.  
Pol. Ind. Jaime I  
46640 Moixent (Valencia) Spain  
+34 962 295 144/5  
export@expormim.com  
www.expormim.com

Expormim USA LLC  
(212) 204-8572  
usa@expormim.com  
www.expormim.com

indoor

Cushions / confección

group 3 - ascendent Carlucci®



ascendent 090



ascendent 070



ascendent 071



ascendent 030



ascendent 093

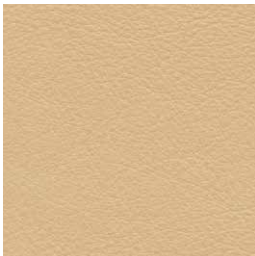


ascendent 022



ascendent 040

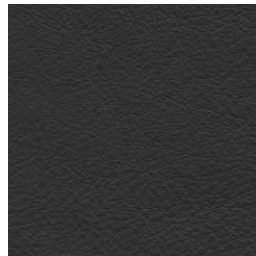
group 3 - elmosoft Elmo® leather



elmosoft 22024



elmosoft 93129



elmosoft 99999

indoor

# Huma

## Dining armchair with rattan legs / sillón comedor con patas de rattan

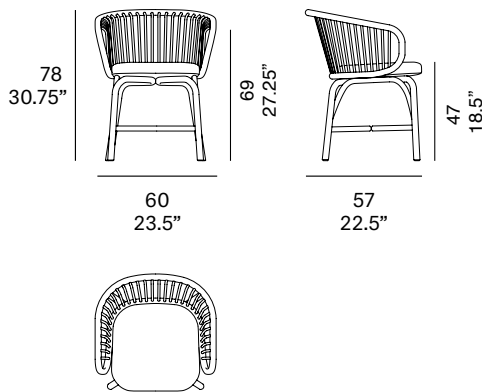
Mario Ruiz, 2015/2021

T070 R



Dining armchair with structure made of peeled and tinted natural rattan of 1.1" diameter. Backrest manufactured in peeled and tinted natural rattan of 0.4" diameter. Finished with a three step water-based coating (dye, base coat and top coat) highly resistant to solar radiation thanks to UV filters. Upholstered seat. Possibility of customization through a wide variety of high performance technical fabrics. Protective caps with removable plastic-felt inserts.

Sillón comedor con estructura en rattan natural pelado y tintado de 28 mm de calibre. Respaldo fabricado en rattan natural pelado y tintado de 10 mm de calibre. Acabado con recubrimiento en tres fases (tinte, fondo y acabado) con filtros UV que lo hacen altamente resistente a la radiación solar. Los acabados utilizados son en base al agua. Asiento tapizado. Posibilidad de personalización mediante una amplia variedad de tejidos técnicos de altas prestaciones de uso. Tacos protectores reversibles de plástico-fieltro.



### Shipment details

Qty	1 dining armchair (1 box)
Volume	0,33 m <sup>3</sup> / 11.7 ft <sup>3</sup>
Gross weight	13 kg / 28.7 lb
Net weight	9 kg / 19.8 lb
Box dimensions (approx.)	65 x 62 x 83 cm 25,5" x 24,5" x 32,75"
Item dimensions (width x depth x height)	60 x 57 x 78 cm 23.5" x 22.5" x 30.75"
COM (1, 40 - 1,50 m / 54"-59")	0,65 m / 0.7 yd

**Rattan**

**tinted**



R10 natural



R03 noce



R06 verde oliva



R08 azzurro



R07 mogano



R24 cinder purple



R23 french grey



R05 grigio



R09 nero

**lacquered**



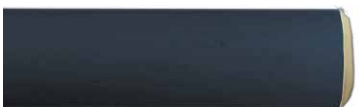
R02 bianco



R22 clay



R17 forest green



R16 navy blue



R14 japanese red





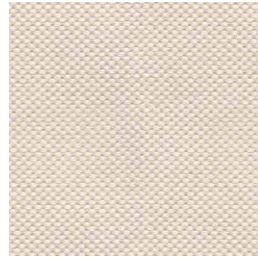
indoor

Cushions / confección

group 1 - natté Sunbrella®



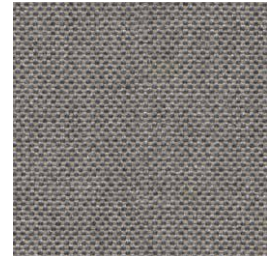
natté white



natté canvas



natté taupe chalk



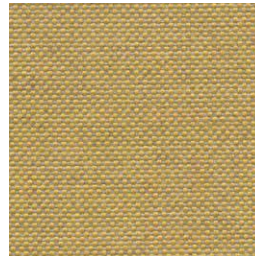
natté carbon beige



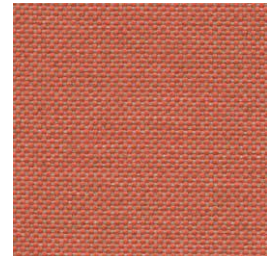
natté dark taupe



natté carbon sky



natté amber



natté flamingo

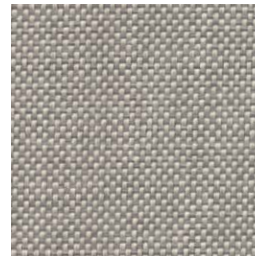
group 1 - dolce Crevin®



dolce 07



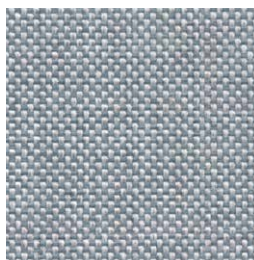
dolce 16



dolce 75



dolce 53



dolce 43



dolce 24



dolce 30

indoor

Cushions / confección

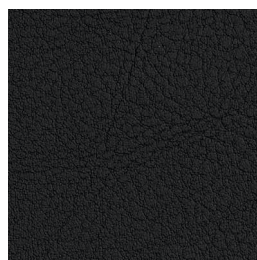
group 1 - valencia™ faux leather



valencia 1049



valencia 0020

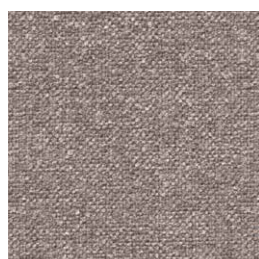


valencia 9035

group 2 - ito Crevin®



ito 05



ito 18



ito 12



ito 71



ito 21



ito 20



ito 38



ito 45

group 2 - sacco Crevin®



sacco 02



sacco 05



sacco 11

**expormim**

Expormim S.A.  
Pol. Ind. Jaime I  
46640 Moixent (Valencia) Spain  
+34 962 295 144/5  
export@expormim.com  
www.expormim.com

Expormim USA LLC  
(212) 204-8572  
usa@expormim.com  
www.expormim.com

indoor

Cushions / confección

group 3 - ascendent Carlucci®



ascendent 090



ascendent 070



ascendent 071



ascendent 030



ascendent 093



ascendent 022



ascendent 040

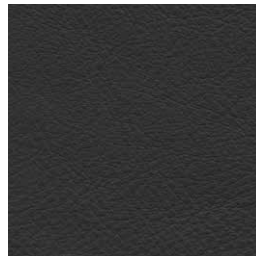
group 3 - elmosoft Elmo® leather



elmosoft 22024



elmosoft 93129



elmosoft 99999

indoor

# Huma

## Swivel armchair with 5 casters / sillón giratorio con cinco ruedas

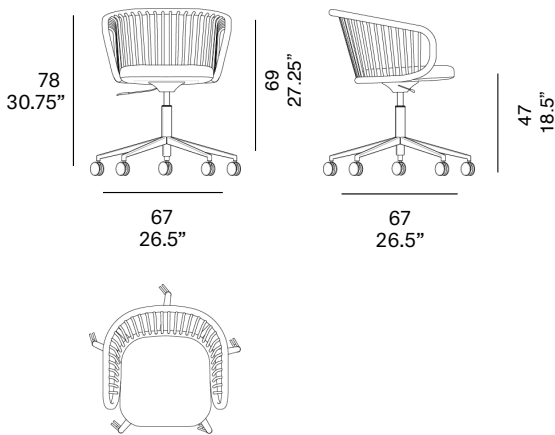
Mario Ruiz, 2015/2021

T070 SF



Swivel armchair with structure made of peeled and tinted natural rattan of 1.1" diameter. Backrest manufactured in peeled and tinted natural rattan of 0.4" diameter. Finished with a three step water-based coating (dye, base coat and top coat) highly resistant to solar radiation thanks to UV filters. Upholstered seat and metal legs with casters. Possibility of customization through a wide variety of high performance technical fabrics. · Gas height adjustment

Sillón giratorio con estructura en rattan natural pelado y tintado de 28 mm de calibre. Respaldo fabricado en rattan natural pelado y tintado de 10 mm de calibre. Acabado con recubrimiento en tres fases (tinte, fondo y acabado) con filtros UV que lo hacen altamente resistente a la radiación solar. Los acabados utilizados son en base al agua. Asiento tapizado y patas metálicas con ruedas. Posibilidad de personalización mediante una amplia variedad de tejidos técnicos de altas prestaciones de uso. · Ajuste de altura de gas



### Shipment details

Qty	1 armchair (1 box)
Volume	0,43 m <sup>3</sup> / 15.1 ft <sup>3</sup>
Gross weight	17 kg / 37,47 lb
Net weight	13 kg / 28.6 lb
Box dimensions (approx.)	72 x 72 x 83 cm 28,3" x 28,3" x 32,75"
Item dimensions (width x depth x height)	67 x 67 x 78 cm 26.5" x 26.5" x 30.75"
COM (1, 40 - 1,50 m / 54"-59")	0,65 m / 0.7 yd

Expormim S.A.  
Pol. Ind. Jaime I  
46640 Moixent (Valencia) Spain  
+34 962 295 144/5  
export@expormim.com  
www.expormim.com

Expormim USA LLC  
(212) 204-8572  
usa@expormim.com  
www.expormim.com

1/5

**Rattan**

**tinted**



R10 natural



R03 noce



R06 verde oliva



R08 azzurro



R07 mogano



R24 cinder purple



R23 french grey



R05 grigio



R09 nero

**lacquered**



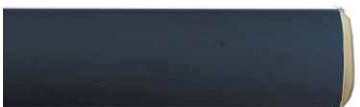
R02 bianco



R22 clay



R17 forest green



R16 navy blue



R14 japanese red



indoor

legs / patas

metallic finishes / metales

---



601 FT black

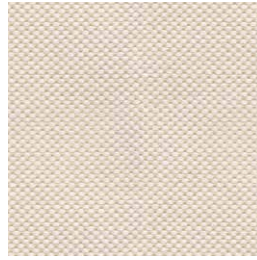
indoor

Cushions / confección

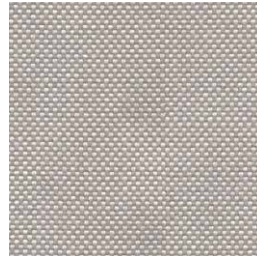
group 1 - natté Sunbrella®



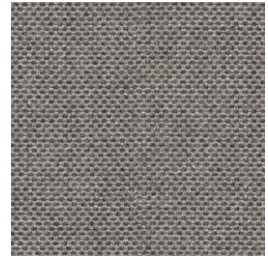
natté white



natté canvas



natté taupe chalk



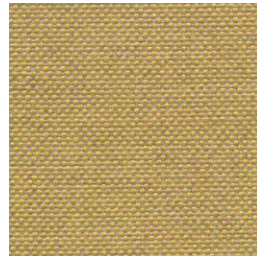
natté carbon beige



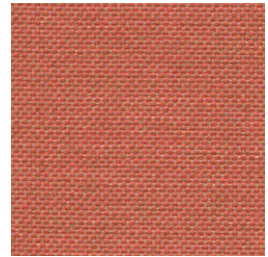
natté dark taupe



natté carbon sky



natté amber



natté flamingo

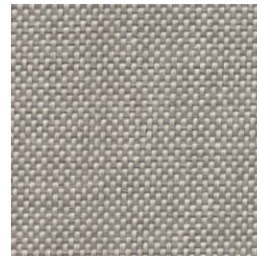
group 1 - dolce Crevin®



dolce 07



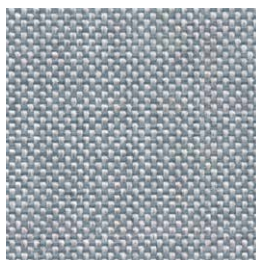
dolce 16



dolce 75



dolce 53



dolce 43



dolce 24



dolce 30

indoor

Cushions / confección

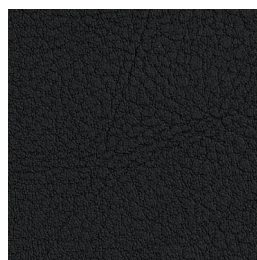
group 1 - valencia™ faux leather



valencia 1049



valencia 0020

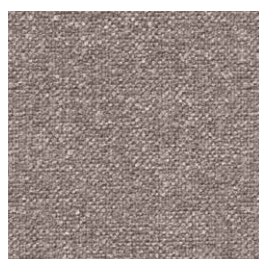


valencia 9035

group 2 - ito Crevin®



ito 05



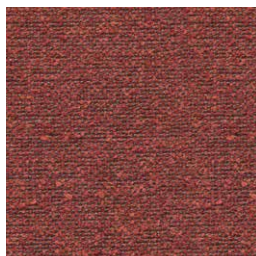
ito 18



ito 12



ito 71



ito 21



ito 20



ito 38



ito 45

group 2 - sacco Crevin®



sacco 02



sacco 05



sacco 11

**expormim**

Expormim S.A.  
Pol. Ind. Jaime I  
46640 Moixent (Valencia) Spain  
+34 962 295 144/5  
export@expormim.com  
www.expormim.com

Expormim USA LLC  
(212) 204-8572  
usa@expormim.com  
www.expormim.com



indoor

Cushions / confección

group 3 - ascendent Carlucci®



ascendent 090



ascendent 070



ascendent 071



ascendent 030



ascendent 093



ascendent 022



ascendent 040

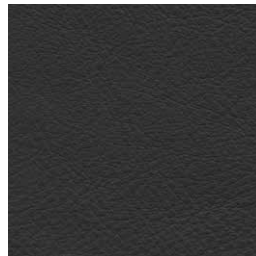
group 3 - elmosoft Elmo® leather



elmosoft 22024



elmosoft 93129



elmosoft 99999

indoor

# Huma

## Swivel armchair / sillón giratorio

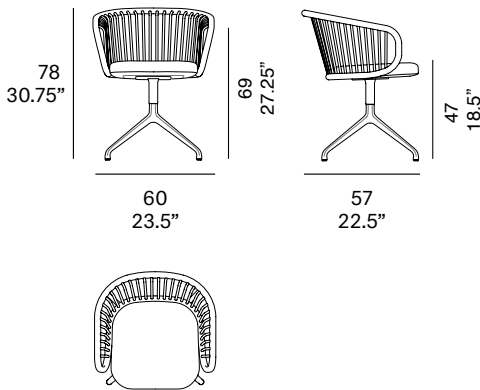
Mario Ruiz, 2015/2021

T070 SN



Swivel armchair with structure made of peeled and tinted natural rattan of 1.1" diameter. Backrest manufactured in peeled and tinted natural rattan of 0.4" diameter. Finished with a three step water-based coating (dye, base coat and top coat) highly resistant to solar radiation thanks to UV filters. Upholstered seat with metal legs. Possibility of customization through a wide variety of high performance technical fabrics. Protective caps with felt inserts.

Sillón giratorio con estructura en rattan natural pelado y tintado de 28 mm de calibre. Respaldo fabricado en rattan natural pelado y tintado de 10 mm de calibre. Acabado con recubrimiento en tres fases (tinte, fondo y acabado) con filtros UV que lo hacen altamente resistente a la radiación solar. Los acabados utilizados son en base al agua. Asiento tapizado y patas metálicas. Posibilidad de personalización mediante una amplia variedad de tejidos técnicos de altas prestaciones de uso. Tacos protectores con fieltro.



### Shipment details

Qty	1 armchair (1 box)
Volume	0,33 m <sup>3</sup> / 11.7 ft <sup>3</sup>
Gross weight	15,5 kg / 34.2 lb
Net weight	11,5 kg / 25.4 lb
Box dimensions (approx.)	65 x 62 x 83 cm 25,5" x 24,5" x 32,75"
Item dimensions (width x depth x height)	60 x 57 x 78 cm 23.5" x 22.5" x 30.75"
COM (1, 40 - 1,50 m / 54"-59")	0,65 m / 0.7 yd

**Rattan**

**tinted**



R10 natural



R03 noce



R06 verde oliva



R08 azzurro



R07 mogano



R24 cinder purple



R23 french grey



R05 grigio



R09 nero

**lacquered**



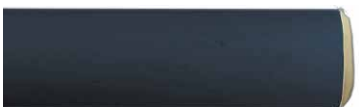
R02 bianco



R22 clay



R17 forest green



R16 navy blue



R14 japanese red

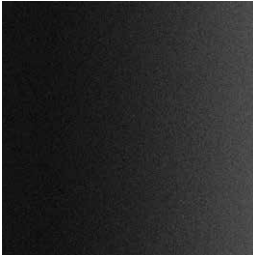


indoor

legs / patas

metallic finishes / metales

---



601 FT black

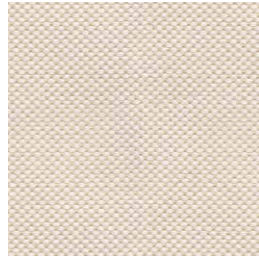
indoor

Cushions / confección

group 1 - natté Sunbrella®



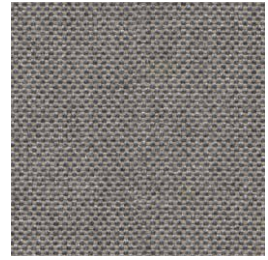
natté white



natté canvas



natté taupe chalk



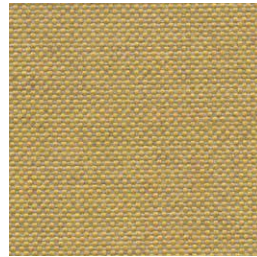
natté carbon beige



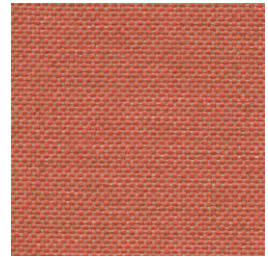
natté dark taupe



natté carbon sky



natté amber



natté flamingo

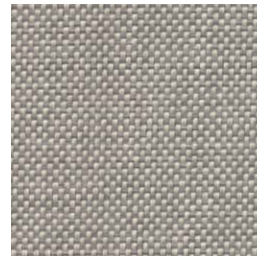
group 1 - dolce Crevin®



dolce 07



dolce 16



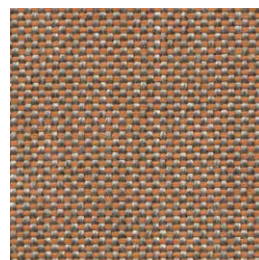
dolce 75



dolce 53



dolce 43



dolce 24



dolce 30

indoor

Cushions / confección

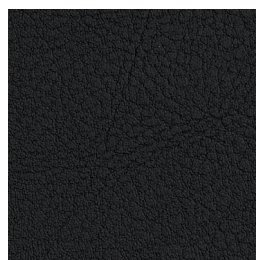
group 1 - valencia™ faux leather



valencia 1049



valencia 0020

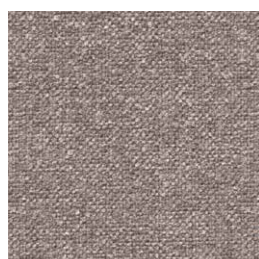


valencia 9035

group 2 - ito Crevin®



ito 05



ito 18



ito 12



ito 71



ito 21



ito 20



ito 38



ito 45

group 2 - sacco Crevin®



sacco 02



sacco 05



sacco 11

**expormim**

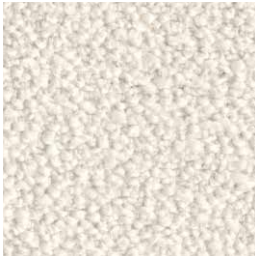
Expormim S.A.  
Pol. Ind. Jaime I  
46640 Moixent (Valencia) Spain  
+34 962 295 144/5  
export@expormim.com  
www.expormim.com

Expormim USA LLC  
(212) 204-8572  
usa@expormim.com  
www.expormim.com

indoor

Cushions / confección

group 3 - ascendent Carlucci®



ascendent 090



ascendent 070



ascendent 071



ascendent 030



ascendent 093



ascendent 022



ascendent 040

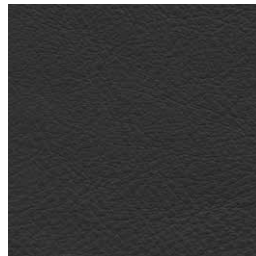
group 3 - elmosoft Elmo® leather



elmosoft 22024



elmosoft 93129



elmosoft 99999

indoor

# Huma

## Swivel armchair / sillón giratorio

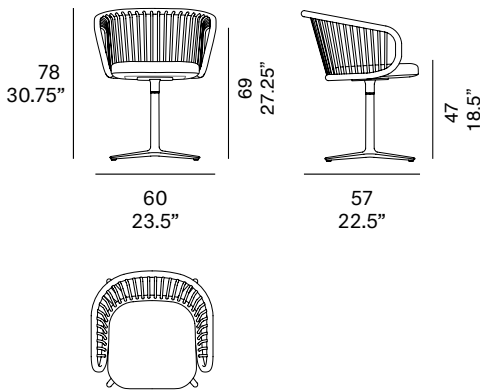
Mario Ruiz, 2015/2021

T070 SP



Swivel armchair with structure made of peeled and tinted natural rattan of 1.1" diameter. Backrest manufactured in peeled and tinted natural rattan of 0.4" diameter. Finished with a three step water-based coating (dye, base coat and top coat) highly resistant to solar radiation thanks to UV filters. Upholstered seat with metal legs. Possibility of customization through a wide variety of high performance technical fabrics. Protective caps with felt inserts.

Sillón giratorio con estructura en rattan natural pelado y tintado de 28 mm de calibre. Respaldo fabricado en rattan natural pelado y tintado de 10 mm de calibre. Acabado con recubrimiento en tres fases (tinte, fondo y acabado) con filtros UV que lo hacen altamente resistente a la radiación solar. Los acabados utilizados son en base al agua. Asiento tapizado y patas metálicas. Posibilidad de personalización mediante una amplia variedad de tejidos técnicos de altas prestaciones de uso. Tacos protectores con fieltro.



### Shipment details

Qty	1 armchair (1 box)
Volume	0,33 m <sup>3</sup> / 11.7 ft <sup>3</sup>
Gross weight	14,5 kg / 32 lb
Net weight	10,5 kg / 23.1 lb
Box dimensions (approx.)	65 x 62 x 83 cm 25,5" x 24,5" x 32,75"
Item dimensions (width x depth x height)	60 x 57 x 78 cm 23.5" x 22.5" x 30.75"
COM (1, 40 - 1,50 m / 54"-59")	0,65 m / 0.7 yd



**Rattan**

**tinted**



R10 natural



R03 noce



R06 verde oliva



R08 azzurro



R07 mogano



R24 cinder purple



R23 french grey



R05 grigio



R09 nero

**lacquered**



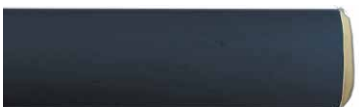
R02 bianco



R22 clay



R17 forest green



R16 navy blue



R14 japanese red

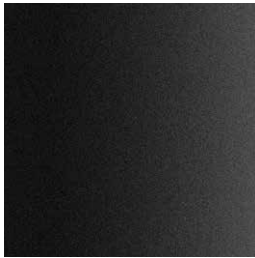


indoor

legs / patas

metallic finishes / metales

---



601 FT black

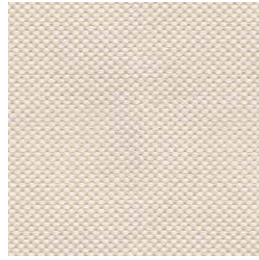
indoor

Cushions / confección

group 1 - natté Sunbrella®



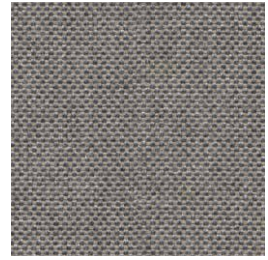
natté white



natté canvas



natté taupe chalk



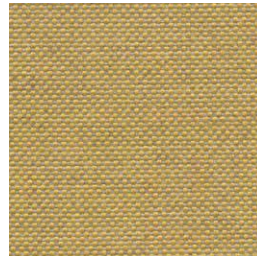
natté carbon beige



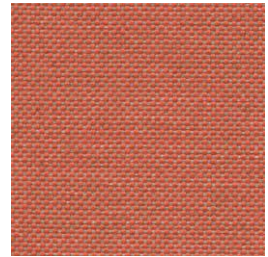
natté dark taupe



natté carbon sky



natté amber



natté flamingo

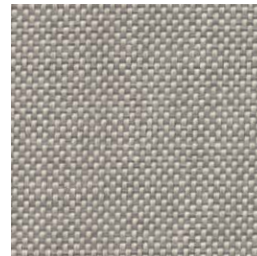
group 1 - dolce Crevin®



dolce 07



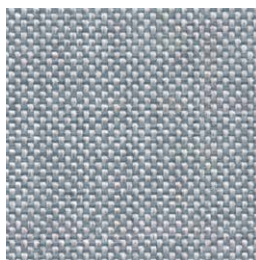
dolce 16



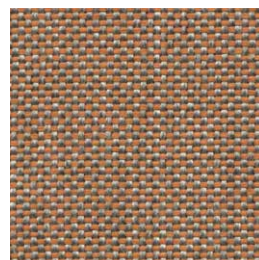
dolce 75



dolce 53



dolce 43



dolce 24



dolce 30

indoor

Cushions / confección

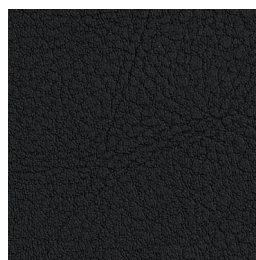
group 1 - valencia™ faux leather



valencia 1049



valencia 0020

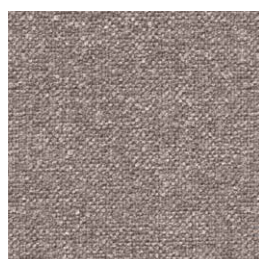


valencia 9035

group 2 - ito Crevin®



ito 05



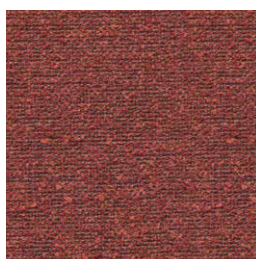
ito 18



ito 12



ito 71



ito 21



ito 20



ito 38



ito 45

group 2 - sacco Crevin®



sacco 02



sacco 05



sacco 11

**expormim**

Expormim S.A.  
Pol. Ind. Jaime I  
46640 Moixent (Valencia) Spain  
+34 962 295 144/5  
export@expormim.com  
www.expormim.com

Expormim USA LLC  
(212) 204-8572  
usa@expormim.com  
www.expormim.com

indoor

Cushions / confección

group 3 - ascendent Carlucci®



ascendent 090



ascendent 070



ascendent 071



ascendent 030



ascendent 093



ascendent 022



ascendent 040

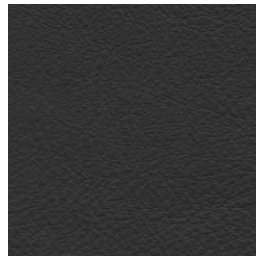
group 3 - elmosoft Elmo® leather



elmosoft 22024



elmosoft 93129



elmosoft 99999

indoor

# Huma

## Swivel armchair with casters / sillón giratorio con ruedas

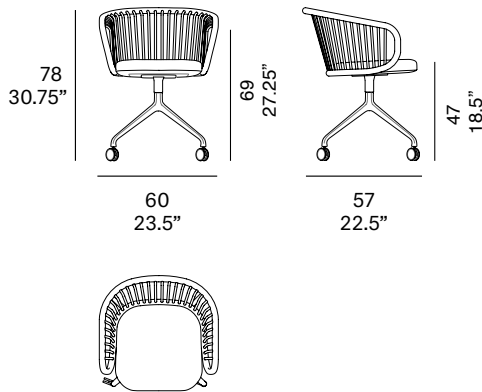
Mario Ruiz, 2015/2021

T070 SW



Swivel armchair with structure made of peeled and tinted natural rattan of 1.1" diameter. Backrest manufactured in peeled and tinted natural rattan of 0.4" diameter. Finished with a three step water-based coating (dye, base coat and top coat) highly resistant to solar radiation thanks to UV filters. Upholstered seat and metal legs with casters. Possibility of customization through a wide variety of high performance technical fabrics.

Sillón giratorio con estructura en rattan natural pelado y tintado de 28 mm de calibre. Respaldo fabricado en rattan natural pelado y tintado de 10 mm de calibre. Acabado con recubrimiento en tres fases (tinte, fondo y acabado) con filtros UV que lo hacen altamente resistente a la radiación solar. Los acabados utilizados son en base al agua. Asiento tapizado y patas metálicas con ruedas. Posibilidad de personalización mediante una amplia variedad de tejidos técnicos de altas prestaciones de uso.



### Shipment details

Qty	1 armchair (1 box)
Volume	0,33 m <sup>3</sup> / 11.7 ft <sup>3</sup>
Gross weight	15 kg / 33.1 lb
Net weight	11 kg / 24.3 lb
Box dimensions (approx.)	65 x 62 x 83 cm 25,5" x 24,5" x 32,75"
Item dimensions (width x depth x height)	60 x 57 x 78 cm 23.5" x 22.5" x 30.75"
COM (1, 40 - 1,50 m / 54"-59")	0,65 m / 0.7 yd

Rattan

tinted



R10 natural



R03 noce



R06 verde oliva



R08 azzurro



R07 mogano



R24 cinder purple



R23 french grey



R05 grigio



R09 nero

lacquered



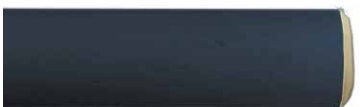
R02 bianco



R22 clay



R17 forest green



R16 navy blue



R14 japanese red



indoor

legs / patas

metallic finishes / metales

---



601 FT black



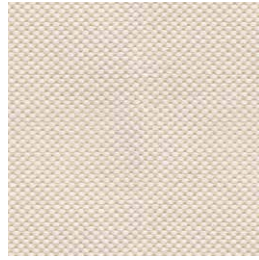
indoor

Cushions / confección

group 1 - natté Sunbrella®



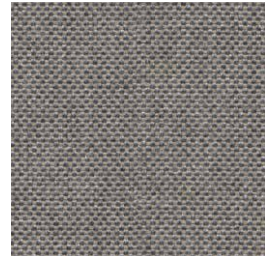
natté white



natté canvas



natté taupe chalk



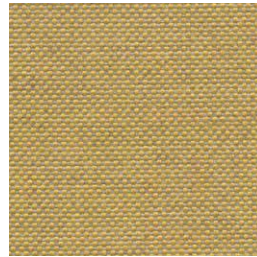
natté carbon beige



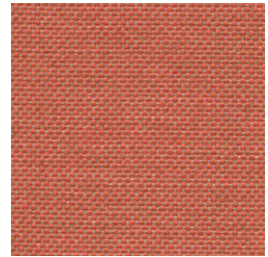
natté dark taupe



natté carbon sky



natté amber



natté flamingo

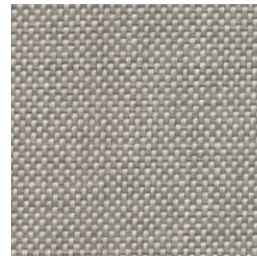
group 1 - dolce Crevin®



dolce 07



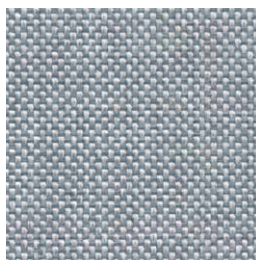
dolce 16



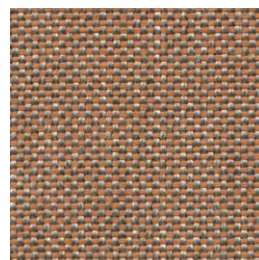
dolce 75



dolce 53



dolce 43



dolce 24



dolce 30

indoor

Cushions / confección

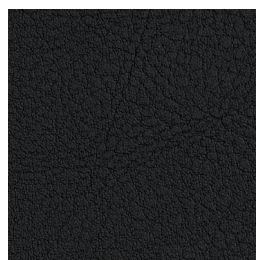
group 1 - valencia™ faux leather



valencia 1049



valencia 0020

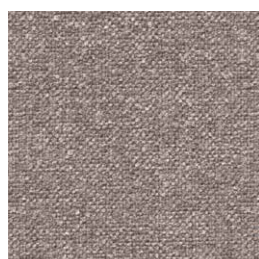


valencia 9035

group 2 - ito Crevin®



ito 05



ito 18



ito 12



ito 71



ito 21



ito 20



ito 38



ito 45

group 2 - sacco Crevin®



sacco 02



sacco 05



sacco 11

**expormim**

Expormim S.A.  
Pol. Ind. Jaime I  
46640 Moixent (Valencia) Spain  
+34 962 295 144/5  
export@expormim.com  
www.expormim.com

Expormim USA LLC  
(212) 204-8572  
usa@expormim.com  
www.expormim.com

indoor

Cushions / confección

group 3 - ascendent Carlucci®



ascendent 090



ascendent 070



ascendent 071



ascendent 030



ascendent 093



ascendent 022



ascendent 040

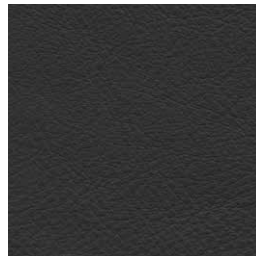
group 3 - elmosoft Elmo® leather



elmosoft 22024



elmosoft 93129



elmosoft 99999

indoor

# Huma

## Dining armchair with solid wood legs / sillón comedor con patas de madera

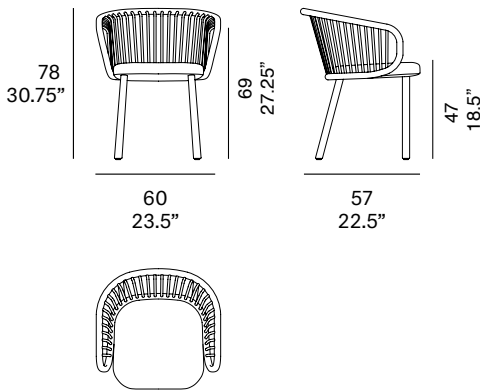
Mario Ruiz, 2015/2021

T070 WN



Dining armchair with structure made of peeled and tinted natural rattan of 1.1" diameter with solid wood legs. Backrest manufactured in peeled and tinted natural rattan of 0.4" diameter. Legs are made of beech wood or lacquered beech wood option. Finished with a three step water-based coating (dye, base coat and top coat) highly resistant to solar radiation thanks to UV filters. Upholstered seat. Possibility of customization through a wide variety of high performance technical fabrics. Protective caps with removable plastic-felt inserts.

Sillón comedor con estructura en rattan natural pelado y tintado de 28 mm de calibre con patas de madera. Respaldo fabricado en rattan natural pelado y tintado de 10 mm de calibre. Las patas pueden ser de madera de haya o madera de haya lacada. Acabado con recubrimiento en tres fases (tinte, fondo y acabado) con filtros UV que lo hacen altamente resistente a la radiación solar. Los acabados utilizados son en base al agua. Asiento tapizado. Posibilidad de personalización mediante una amplia variedad de tejidos técnicos de altas prestaciones de uso. Tacos protectores reversibles de plástico-fieltro.



### Shipment details

Qty	1 dining armchair (1 box)
Volume	0,33 m <sup>3</sup> / 11.7 ft <sup>3</sup>
Gross weight	14,5 kg / 32 lb
Net weight	10,5 kg / 23.1 lb
Box dimensions (approx.)	65 x 62 x 83 cm 25,5" x 24,5" x 32,75"
Item dimensions (width x depth x height)	60 x 57 x 78 cm 23.5" x 22.5" x 30.75"
COM (1, 40 - 1,50 m / 54"-59")	0,65 m / 0.7 yd

**Rattan**

**tinted**



R10 natural



R03 noce



R06 verde oliva



R08 azzurro



R07 mogano



R24 cinder purple



R23 french grey



R05 grigio



R09 nero

**lacquered**



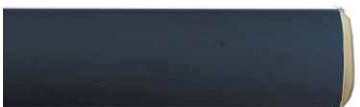
R02 bianco



R22 clay



R17 forest green



R16 navy blue



R14 japanese red



indoor

**Legs / patas**

**beech wood / madera de haya**



W01 natural oak



W03 light oak



W02 white stained



W04 black stained

**textured lacquers**

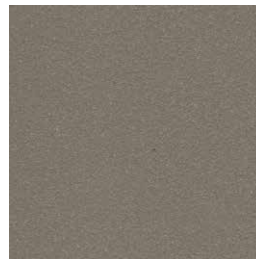
lacquered beech wood / madera de haya lacada



LT02 light grey



LT09 champagne



LT10 bronze



LT11 graphite

**lacquers**

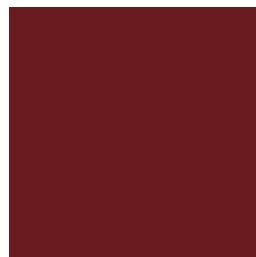
lacquered beech wood / madera de haya lacada



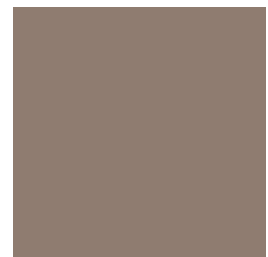
L17 forest green



L16 navy blue



L14 japanese red



L5 taupe

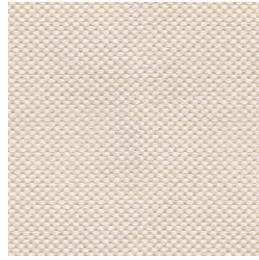
indoor

Cushions / confección

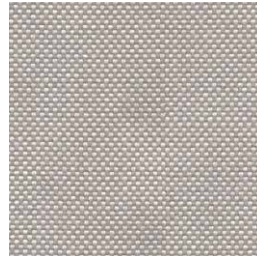
group 1 - natté Sunbrella®



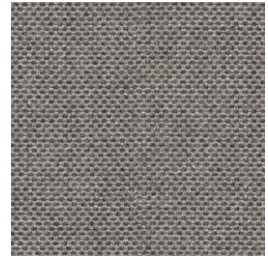
natté white



natté canvas



natté taupe chalk



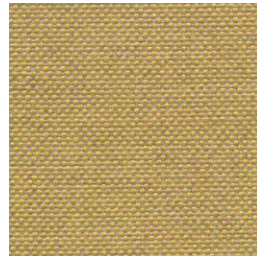
natté carbon beige



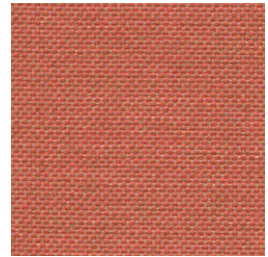
natté dark taupe



natté carbon sky



natté amber



natté flamingo

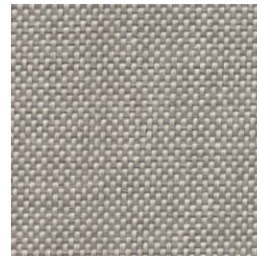
group 1 - dolce Crevin®



dolce 07



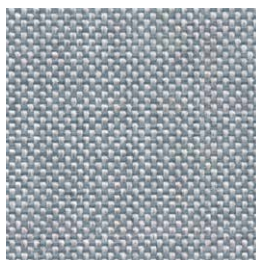
dolce 16



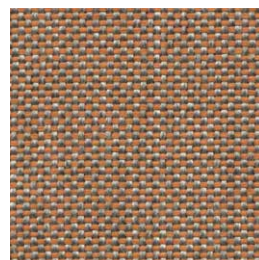
dolce 75



dolce 53



dolce 43



dolce 24



dolce 30

indoor

Cushions / confección

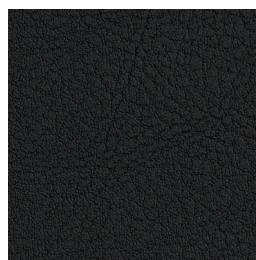
group 1 - valencia™ faux leather



valencia 1049



valencia 0020

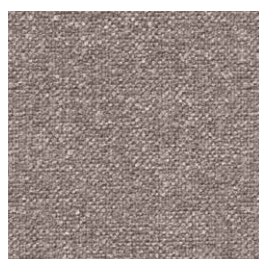


valencia 9035

group 2 - ito Crevin®



ito 05



ito 18



ito 12



ito 71



ito 21



ito 20



ito 38



ito 45

group 2 - sacco Crevin®



sacco 02



sacco 05



sacco 11

**expormim**

Expormim S.A.  
Pol. Ind. Jaime I  
46640 Moixent (Valencia) Spain  
+34 962 295 144/5  
export@expormim.com  
www.expormim.com

Expormim USA LLC  
(212) 204-8572  
usa@expormim.com  
www.expormim.com



indoor

Cushions / confección

group 3 - ascendent Carlucci®



ascendent 090



ascendent 070



ascendent 071



ascendent 030



ascendent 093



ascendent 022



ascendent 040

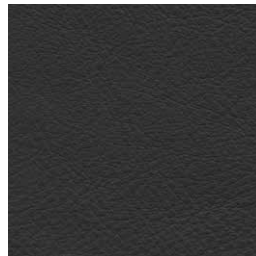
group 3 - elmosoft Elmo® leather



elmosoft 22024



elmosoft 93129



elmosoft 99999

indoor

# Huma

## Upholstered dining armchair with metal legs / sillón comedor tapizado con patas metálicas

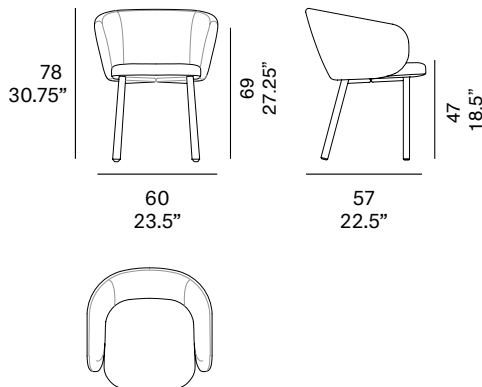
Mario Ruiz, 2015/2021

T071 M



Upholstered dining armchair with metal legs. Backrest comes in steel tube covered with cold-cured moulded polyurethane foam. Upholstered seat and backrest. Possibility of customization through a wide variety of high performance technical fabrics. Plastic protective caps.

Sillón comedor tapizado con patas de metal. La estructura del respaldo es de tubo de acero revestido con espuma flexible de poliuretano. Asiento y respaldo tapizados. Posibilidad de personalización mediante una amplia variedad de tejidos técnicos de altas prestaciones de uso. Tacos protectores de plástico.



### Shipment details

Qty	1 dining armchair (1 box)
Volume	0,33 m <sup>3</sup> / 11.7 ft <sup>3</sup>
Gross weight	17,5 kg / 38.6 lb
Net weight	13,5 kg / 29.8 lb
Box dimensions (approx.)	65 x 62 x 83 cm 25,5" x 24,5" x 32,75"
Item dimensions (width x depth x height)	60 x 57 x 78 cm 23.5" x 22.5" x 30.75"
COM	2 m / 2.2 yd
	(1, 40 - 1,50 m / 54"-59")

indoor

**Upholstery / tapizado**

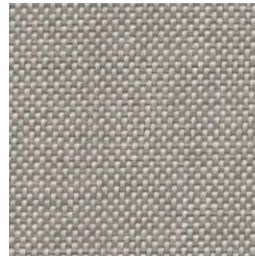
**group 1 - dolce Crevin®**



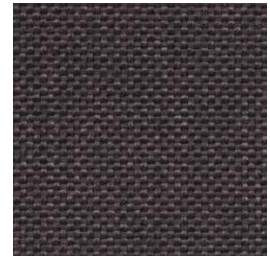
dolce 07



dolce 16



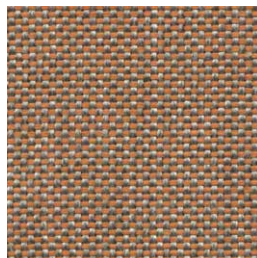
dolce 75



dolce 53



dolce 43



dolce 24



dolce 30

**group 1 - valencia™ faux leather**



valencia 1049



valencia 0020



valencia 9035

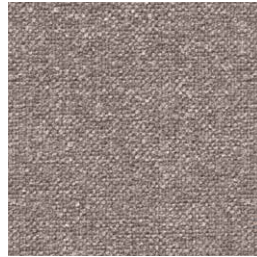
indoor

**Upholstery / tapizado**

**group 2 - ito Crevin®**



ito 05



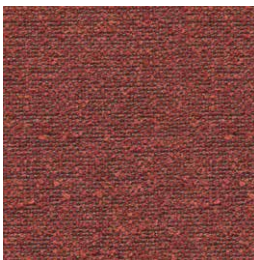
ito 18



ito 12



ito 71



ito 21



ito 20



ito 38



ito 45

**group 2 - sacco Crevin®**



sacco 02



sacco 05



indoor

Cushions / confección

group 3 - ascendent Carlucci®



ascendent 090



ascendent 070



ascendent 071



ascendent 030



ascendent 093



ascendent 022



ascendent 040

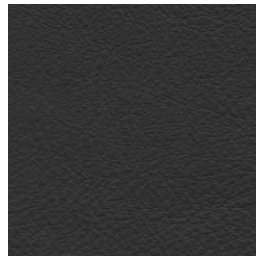
group 3 - elmosoft Elmo® leather



elmosoft 22024



elmosoft 93129



elmosoft 99999

indoor

**Legs / patas**

**metallic finishes / metales**



102 FT light grey  
fine textured



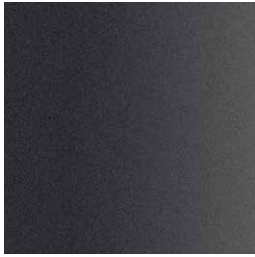
109 FT champagne  
fine textured



110 FT bronze  
fine textured



108 FT oxide  
fine textured



111 FT graphite  
fine textured

indoor

# Huma

## Upholstered swivel armchair with 5 casters / sillón tapizado giratorio con 5 ruedas

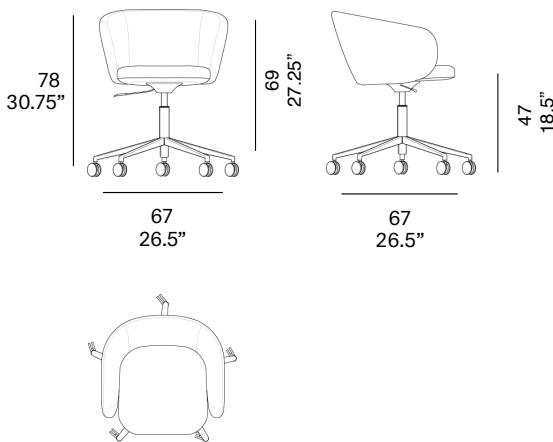
Mario Ruiz, 2015/2021

T071 SF



Upholstered swivel armchair with metal legs with 5 casters. Backrest comes in steel tube covered with cold-cured moulded polyurethane foam. Upholstered seat and backrest. Possibility of customization through a wide variety of high performance technical fabrics. · Gas height adjustment

Sillón giratorio tapizado con patas de metal y con 5 ruedas. La estructura del respaldo es de tubo de acero revestido con espuma flexible de poliuretano. Asiento y respaldo tapizados. Posibilidad de personalización mediante una amplia variedad de tejidos técnicos de altas prestaciones de uso. · Ajuste de altura de gas



### Shipment details

Qty	1 armchair (1 box)
Volume	0,43 m <sup>3</sup> / 15.1 ft <sup>3</sup>
Gross weight	19,5 kg / 42.9 lb
Net weight	15,5 kg / 34.1 lb
Box dimensions (approx.)	72 x 72 x 83 cm 2 5,5" x 24,5" x 32,75"
Item dimensions (width x depth x height)	67 x 67 x 78 cm 26,3" x 26.3" x 30.75"
COM (1, 40 - 1,50 m / 54"-59")	2 m / 2.2 yd

indoor

**Upholstery / tapizado**

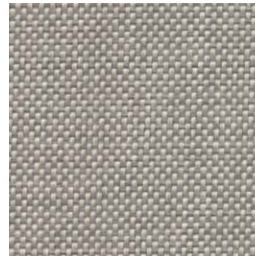
**group 1 - dolce Crevin®**



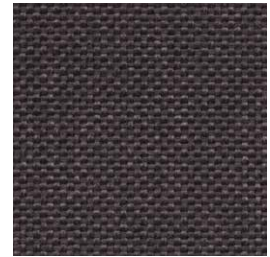
dolce 07



dolce 16



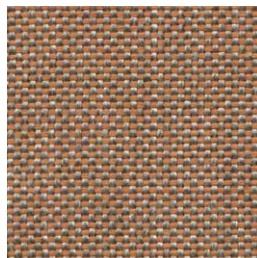
dolce 75



dolce 53



dolce 43



dolce 24



dolce 30

**group 1 - valencia™ faux leather**



valencia 1049



valencia 0020



valencia 9035



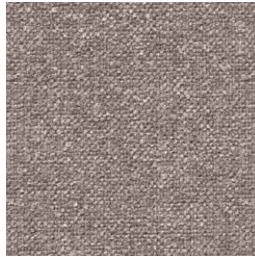
indoor

**Upholstery / tapizado**

**group 2 - ito Crevin®**



ito 05



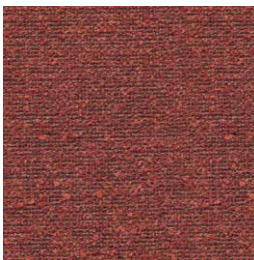
ito 18



ito 12



ito 71



ito 21



ito 20



ito 38



ito 45

**group 2 - sacco Crevin®**



sacco 02



sacco 05



indoor

Cushions / confección

group 3 - ascendent Carlucci®



ascendent 090



ascendent 070



ascendent 071



ascendent 030



ascendent 093



ascendent 022



ascendent 040

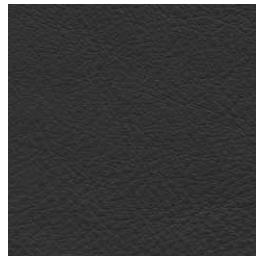
group 3 - elmosoft Elmo® leather



elmosoft 22024



elmosoft 93129



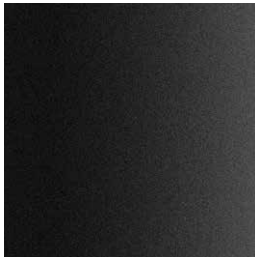
elmosoft 99999

indoor

**Legs / patas**

**metallic finishes / metales**

---



601 FT black

indoor

# Huma

## Upholstered swivel armchair / sillón tapizado giratorio

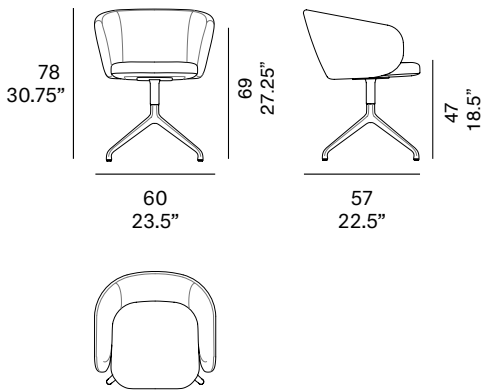
Mario Ruiz, 2015/2021

T071 SN



Upholstered swivel armchair with metal legs. Backrest comes in steel tube covered with cold-cured moulded polyurethane foam. Upholstered seat and backrest. Possibility of customization through a wide variety of high performance technical fabrics. Protective caps with felt inserts.

Sillón giratorio tapizado con patas de metal. La estructura del respaldo es de tubo de acero revestido con espuma flexible de poliuretano. Asiento y respaldo tapizados. Posibilidad de personalización mediante una amplia variedad de tejidos técnicos de altas prestaciones de uso. Tacos protectores con fieltro.



### Shipment details

Qty	1 armchair (1 box)
Volume	0,33 m <sup>3</sup> / 11.7 ft <sup>3</sup>
Gross weight	18 kg / 39.7 lb
Net weight	14 kg / 30.9 lb
Box dimensions (approx.)	65 x 62 x 83 cm 25,5" x 24,5" x 32,75"
Item dimensions (width x depth x height)	60 x 57 x 78 cm 23.5" x 22.5" x 30.75"
COM	2 m / 2.2 yd
	(1, 40 - 1,50 m / 54"-59")

indoor

**Upholstery / tapizado**

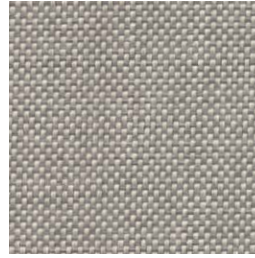
**group 1 - dolce Crevin®**



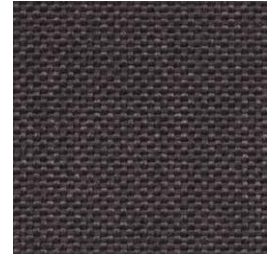
dolce 07



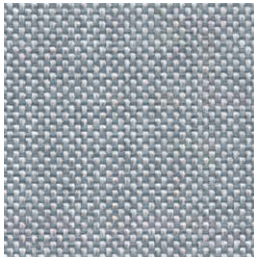
dolce 16



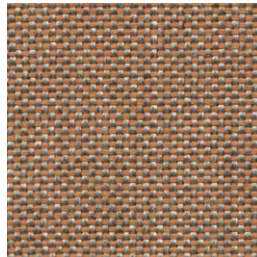
dolce 75



dolce 53



dolce 43



dolce 24



dolce 30

**group 1 - valencia™ faux leather**



valencia 1049



valencia 0020



valencia 9035

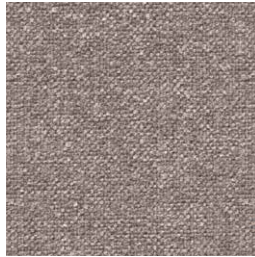
indoor

**Upholstery / tapizado**

**group 2 - ito Crevin®**



ito 05



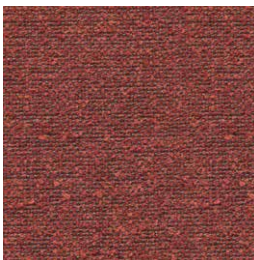
ito 18



ito 12



ito 71



ito 21



ito 20



ito 38



ito 45

**group 2 - sacco Crevin®**



sacco 02



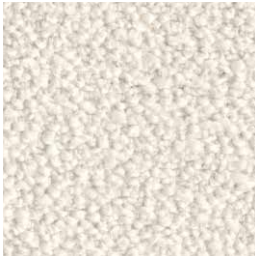
sacco 05



indoor

Cushions / confección

group 3 - ascendent Carlucci®



ascendent 090



ascendent 070



ascendent 071



ascendent 030



ascendent 093



ascendent 022



ascendent 040

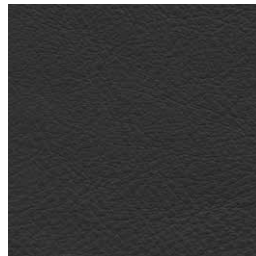
group 3 - elmosoft Elmo® leather



elmosoft 22024



elmosoft 93129



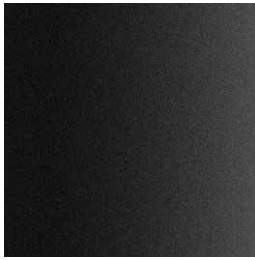
elmosoft 99999

indoor

Legs / patas

metallic finishes / metales

---



601 FT black



indoor

# Huma

## Upholstered swivel armchair / sillón tapizado giratorio

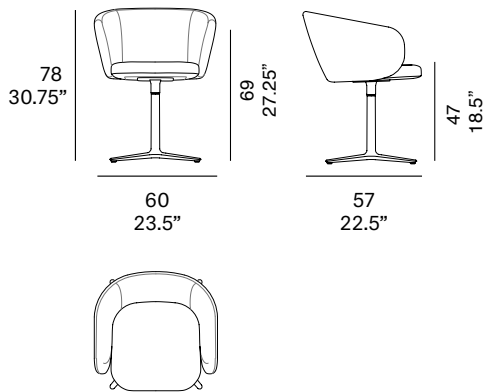
Mario Ruiz, 2015/2021

T071 SP



Upholstered swivel armchair with metal legs. Backrest comes in steel tube covered with cold-cured moulded polyurethane foam. Upholstered seat and backrest. Possibility of customization through a wide variety of high performance technical fabrics. Protective caps with felt inserts.

Sillón giratorio tapizado con patas de metal. La estructura del respaldo es de tubo de acero revestido con espuma flexible de poliuretano. Asiento y respaldo tapizados. Posibilidad de personalización mediante una amplia variedad de tejidos técnicos de altas prestaciones de uso. Tacos protectores con fieltro.



### Shipment details

Qty	1 armchair (1 box)
Volume	0,33 m <sup>3</sup> / 11.7 ft <sup>3</sup>
Gross weight	17 kg / 37.5 lb
Net weight	13 kg / 28.7 lb
Box dimensions (approx.)	65 x 62 x 83 cm 25,5" x 24,5" x 32,75"
Item dimensions (width x depth x height)	60 x 57 x 78 cm 23.5" x 22.5" x 30.75"
COM	2 m / 2.2 yd
(1, 40 - 1,50 m / 54"-59")	

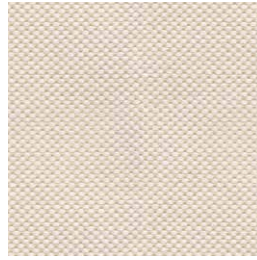
indoor

Cushions / confección

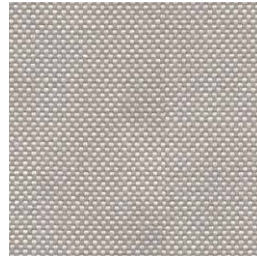
group 1 - natté Sunbrella®



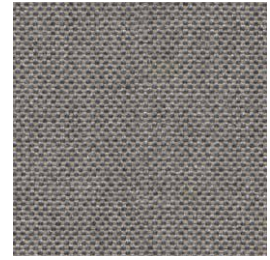
natté white



natté canvas



natté taupe chalk



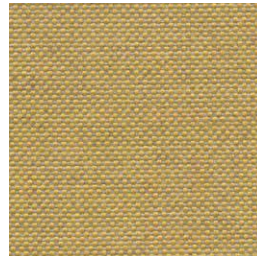
natté carbon beige



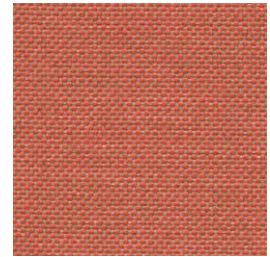
natté dark taupe



natté carbon sky



natté amber



natté flamingo

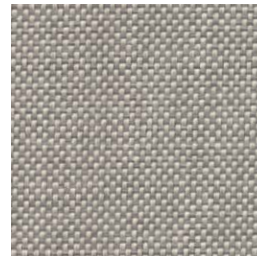
group 1 - dolce Crevin®



dolce 07



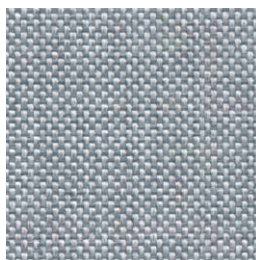
dolce 16



dolce 75



dolce 53



dolce 43



dolce 24



dolce 30

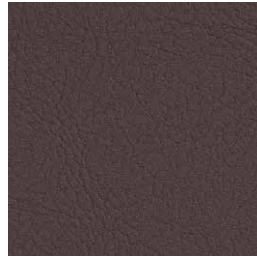
indoor

Cushions / confección

group 1 - valencia™ faux leather



valencia 1049



valencia 0020

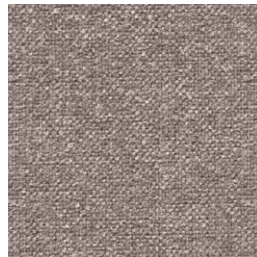


valencia 9035

group 2 - ito Crevin®



ito 05



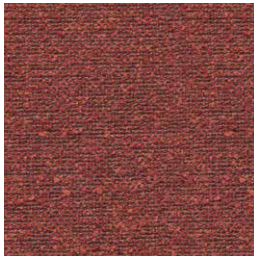
ito 18



ito 12



ito 71



ito 21



ito 20



ito 38



ito 45

group 2 - sacco Crevin®



sacco 02



sacco 05



sacco 11

indoor

Cushions / confección

group 3 - ascendent Carlucci®



ascendent 090



ascendent 070



ascendent 071



ascendent 030



ascendent 093



ascendent 022



ascendent 040

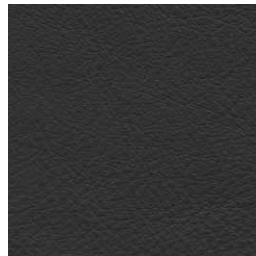
group 3 - elmosoft Elmo® leather



elmosoft 22024



elmosoft 93129



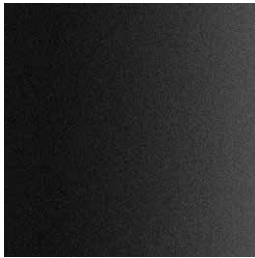
elmosoft 99999

indoor

Legs / patas

metallic finishes / metales

---



601 FT black

indoor

# Huma

## Upholstered swivel armchair with casters / sillón tapizado giratorio con ruedas

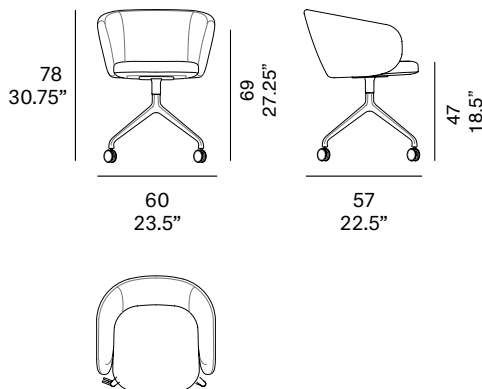
Mario Ruiz, 2015/2021

T071 SW



Upholstered swivel armchair with metal legs with casters. Backrest comes in steel tube covered with cold-cured moulded polyurethane foam. Upholstered seat and backrest. Possibility of customization through a wide variety of high performance technical fabrics.

Sillón giratorio tapizado con patas de metal y con ruedas. La estructura del respaldo es de tubo de acero revestido con espuma flexible de poliuretano. Asiento y respaldo tapizados. Posibilidad de personalización mediante una amplia variedad de tejidos técnicos de altas prestaciones de uso.



### Shipment details

Qty	1 armchair (1 box)
Volume	0,33 m <sup>3</sup> / 11.7 ft <sup>3</sup>
Gross weight	17,5 kg / 38.6 lb
Net weight	13,5 kg / 29.8 lb
Box dimensions (approx.)	65 x 62 x 83 cm 25,5" x 24,5" x 32,75"
Item dimensions (width x depth x height)	60 x 57 x 78 cm 23.5" x 22.5" x 30.75"
COM	2 m / 2.2 yd
	(1, 40 - 1,50 m / 54"-59")

indoor

**Upholstery / tapizado**

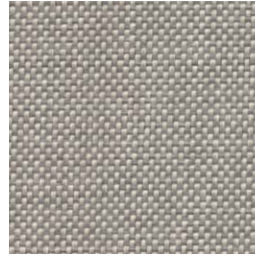
**group 1 - dolce Crevin®**



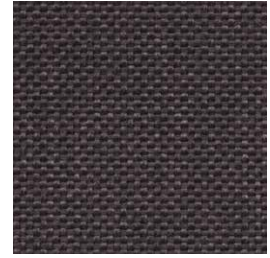
dolce 07



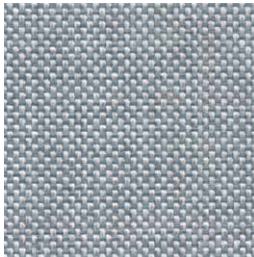
dolce 16



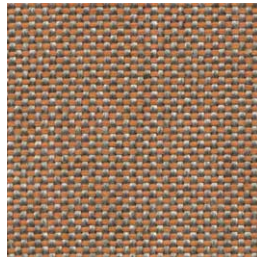
dolce 75



dolce 53



dolce 43



dolce 24



dolce 30

**group 1 - valencia™ faux leather**



valencia 1049



valencia 0020



valencia 9035

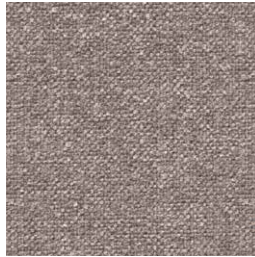
indoor

**Upholstery / tapizado**

**group 2 - ito Crevin®**



ito 05



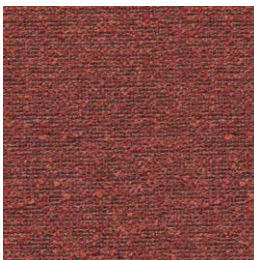
ito 18



ito 12



ito 71



ito 21



ito 20



ito 38



ito 45

**group 2 - sacco Crevin®**



sacco 02



sacco 05





indoor

Cushions / confección

group 3 - ascendent Carlucci®



ascendent 090



ascendent 070



ascendent 071



ascendent 030



ascendent 093



ascendent 022



ascendent 040

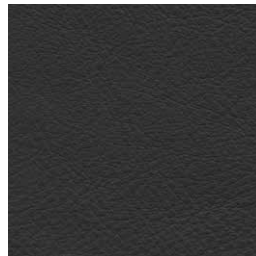
group 3 - elmosoft Elmo® leather



elmosoft 22024



elmosoft 93129



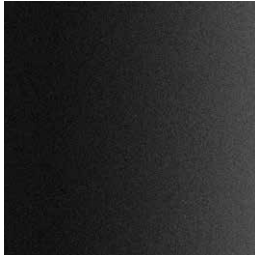
elmosoft 99999

indoor

**Legs / patas**

**metallic finishes / metales**

---



601 FT black

indoor

# Huma

## Upholstered dining armchair with solid wood legs / sillón comedor tapizado con patas de madera

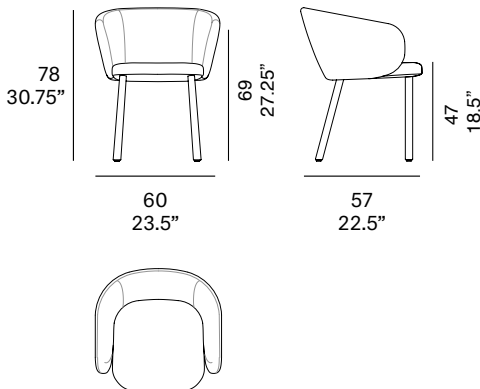
Mario Ruiz, 2015/2021

T071 WN



Upholstered dining armchair with solid wood legs. Legs are made of beech wood or lacquered beech wood option. Backrest comes in steel tube covered with cold-cured moulded polyurethane foam. Upholstered seat and backrest. Possibility of customization through a wide variety of high performance technical fabrics. Protective caps with removable plastic-felt inserts.

Sillón comedor tapizado con patas de madera. Las patas pueden ser de madera de haya o madera de haya lacada. La estructura del respaldo es de tubo de acero revestido con espuma flexible de poliuretano. Asiento y respaldo tapizados. Posibilidad de personalización mediante una amplia variedad de tejidos técnicos de altas prestaciones de uso. Tacos protectores reversibles de plástico-fielto.



### Shipment details

Qty	1 dining armchair (1 box)
Volume	0,33 m <sup>3</sup> / 11.7 ft <sup>3</sup>
Gross weight	17 kg / 37.5 lb
Net weight	13 kg / 28.7 lb
Box dimensions (approx.)	65 x 62 x 83 cm 25,5" x 24,5" x 32,75"
Item dimensions (width x depth x height)	60 x 57 x 78 cm 23.5" x 22.5" x 30.75"
COM	2 m / 2.2 yd
	(1, 40 - 1,50 m / 54"-59")

indoor

**Upholstery / tapizado**

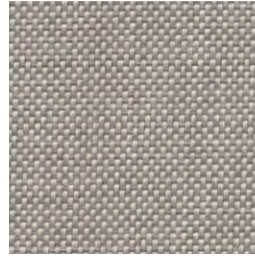
**group 1 - dolce Crevin®**



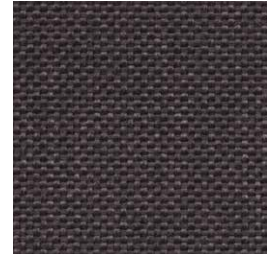
dolce 07



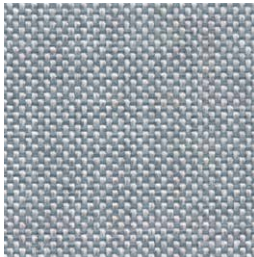
dolce 16



dolce 75



dolce 53



dolce 43



dolce 24



dolce 30

**group 1 - valencia™ faux leather**



valencia 1049



valencia 0020



valencia 9035

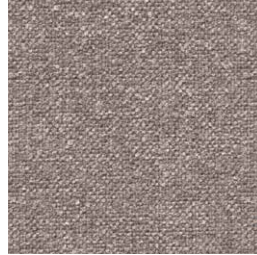
indoor

**Upholstery / tapizado**

**group 2 - ito Crevin®**



ito 05



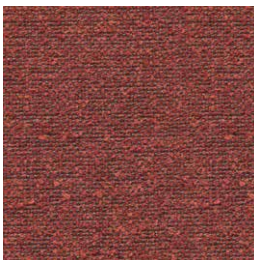
ito 18



ito 12



ito 71



ito 21



ito 20



ito 38



ito 45

**group 2 - sacco Crevin®**



sacco 02



sacco 05



sacco 11

indoor

**Upholstery / tapizado**

**group 3 - ascendent Carlucci®**



ascendent 090



ascendent 070



ascendent 071



ascendent 030



ascendent 093



ascendent 022



ascendent 040

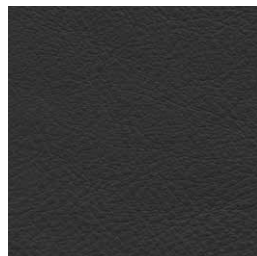
**group 3 - elmosoft Elmo® leather**



elmosoft 22024



elmosoft 93129



elmosoft 99999

indoor

**Legs / patas**

**beech wood / madera de haya**



W01 natural oak



W03 light oak



W02 white stained



W04 black stained

**textured lacquers**

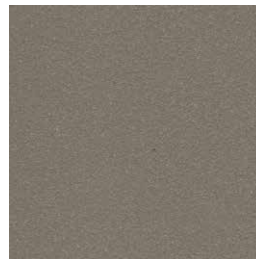
lacquered beech wood / madera de haya lacada



LT02 light grey



LT09 champagne



LT10 bronze



LT11 graphite

**lacquers**

lacquered beech wood / madera de haya lacada



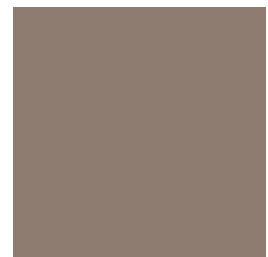
L17 forest green



L16 navy blue



L14 japanese red



L5 taupe