

indoor

Frames

Round coffee table / centro redondo

Jaime Hayon, 2014

T558 54

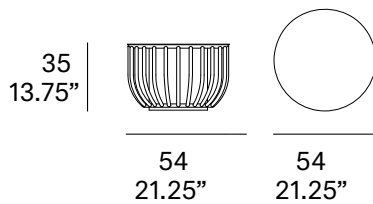


Round coffee table made of peeled and tinted natural rattan of 0.7" diameter. Finished with a three step coating (dye, base coat and top coat) highly resistant to solar radiation thanks to UV filters. Tabletop and central leg made of lacquered steel plate.

Centro redondo fabricado en rattan natural pelado y tintado de 18 mm de calibre. Acabado con recubrimiento en tres fases (tinte, fondo y acabado) con filtros UV que lo hacen altamente resistente a la radiación solar. Tapa y pie central fabricados en plancha de acero lacada.

Shipment details

Qty	1 coffee table (1 box)
Volume	0,14 m ³ / 4.9 ft ³
Gross weight	20 kg / 44.1 lb
Net weight	16 kg / 35.3 lb
Item dimensions (width x depth x height)	54 x 54 x 35 cm 21.25" x 21.25" x 13.75"



Rattan

tinted



R10 natural



R03 noce



R06 verde oliva



R08 azzurro



R07 mogano



R24 cinder purple



R23 french grey



R05 grigio



R09 nero

lacquered



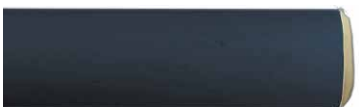
R02 bianco



R22 clay



R17 forest green



R16 navy blue



R14 japanese red



indoor

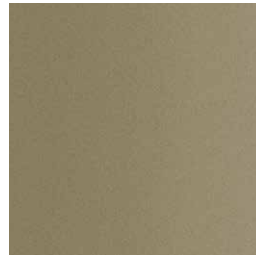
Metallic frame and top / tapa y pie metálico



102 FT light grey
fine textured



109 FT champagne
fine textured



110 FT bronze
fine textured



108 FT oxide
fine textured



111 FT graphite
fine textured

indoor

Frames

Round coffee table / centro redondo

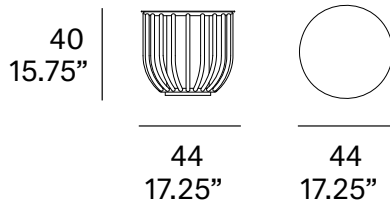
Jaime Hayon, 2014

T558 44



Round coffee table made of peeled and tinted natural rattan of 0.7" diameter. Finished with a three step coating (dye, base coat and top coat) highly resistant to solar radiation thanks to UV filters. Tabletop and central leg made of lacquered steel plate.

Centro redondo fabricado en rattan natural pelado y tintado de 18 mm de calibre. Acabado con recubrimiento en tres fases (tinte, fondo y acabado) con filtros UV que lo hacen altamente resistente a la radiación solar. Tapa y pie central fabricados en plancha de acero lacada.



Shipment details

Qty	1 coffee table (1 box)
Volume	0,11 m ³ / 3.9 ft ³
Gross weight	15 kg / 33.1 lb
Net weight	12 kg / 26.5 lb
Item dimensions (width x depth x height)	44 x 44 x 40 cm 17.25" x 17.25" x 15.75"

Rattan

tinted



R10 natural



R03 noce



R06 verde oliva



R08 azzurro



R07 mogano



R24 cinder purple



R23 french grey



R05 grigio



R09 nero

lacquered



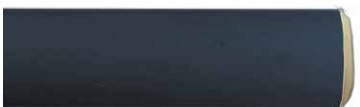
R02 bianco



R22 clay



R17 forest green



R16 navy blue



R14 japanese red



indoor

Metallic frame and top / tapa y pie metálico



102 FT light grey
fine textured



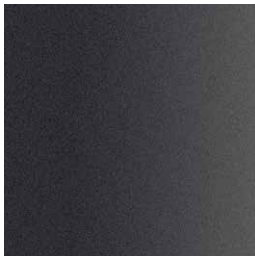
109 FT champagne
fine textured



110 FT bronze
fine textured



108 FT oxide
fine textured



111 FT graphite
fine textured