

indoor

Fontal

Upholstered dining chair / silla tapizada

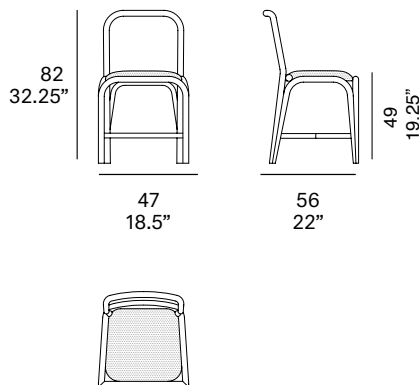
Oscar Tusquets Blanca, 2012/2017

T010 U



Dining chair with structure made of peeled and tinted natural rattan of 1.26" diameter. Finished with a three step water-based coating (dye, base coat and top coat) highly resistant to solar radiation thanks to UV filters. Upholstered seat. Possibility of customization through a wide variety of high performance technical fabrics. Protective caps with removable plastic-felt inserts.

Silla con estructura en rattan natural pelado y tintado de 32 mm de calibre. Acabado con recubrimiento en tres fases (tinte, fondo y acabado) con filtros UV que lo hacen altamente resistente a la radiación solar. Asiento tapizado. Posibilidad de personalización mediante una amplia variedad de tejidos técnicos de altas prestaciones de uso. Tacos protectores reversibles de plástico-fieltro.



Shipment details

Qty	1 dining chair (1 box)
Volume	0,24 m ³ / 8.5 ft ³
Gross weight	10 kg / 22 lb
Net weight	6 kg / 13.2 lb
Box dimensions (approx.)	49 x 58 x 85 cm 19.25" x 22.75" x 33.5"
Item dimensions (width x depth x height)	47 x 56 x 82 cm 18.5" x 22" x 32.25"
COM	0,60 m / 0.66 yd (1, 40 - 1,50 m / 54"-59")

Certifications

EN 16139:2013 (level: L1)
EN 1022:2005

Rattan

tinted



R10 natural



R03 noce



R06 verde oliva



R08 azzurro



R07 mogano



R24 cinder purple



R23 french grey



R05 grigio



R09 nero

lacquered



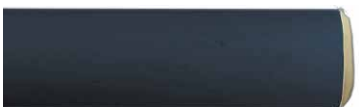
R02 bianco



R22 clay



R17 forest green



R16 navy blue



R14 japanese red



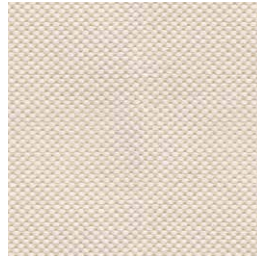
indoor

Cushions / confección

group 1 - natté Sunbrella®



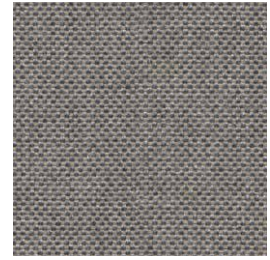
natté white



natté canvas



natté taupe chalk



natté carbon beige



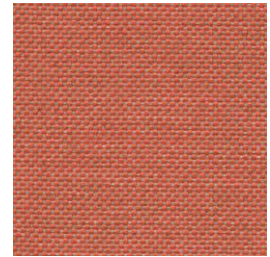
natté dark taupe



natté carbon sky



natté amber



natté flamingo

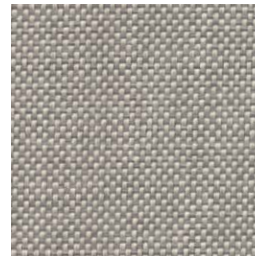
group 1 - dolce Crevin®



dolce 07



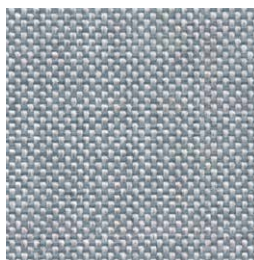
dolce 16



dolce 75



dolce 53



dolce 43



dolce 24



dolce 30

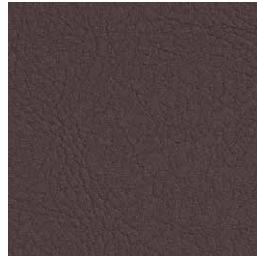
indoor

Cushions / confección

group 1 - valencia™ faux leather



valencia 1049



valencia 0020

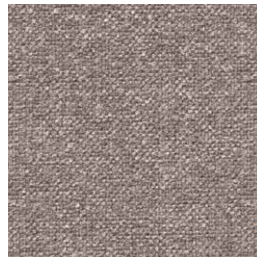


valencia 9035

group 2 - ito Crevin®



ito 05



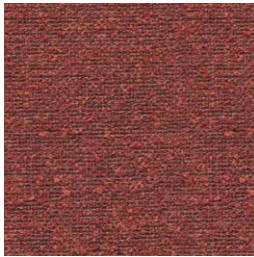
ito 18



ito 12



ito 71



ito 21



ito 20



ito 38



ito 45

group 2 - sacco Crevin®



sacco 02



sacco 05



sacco 11

expormim

Expormim S.A.
Pol. Ind. Jaime I
46640 Moixent (Valencia) Spain
+34 962 295 144/5
export@expormim.com
www.expormim.com

Expormim USA LLC
(212) 204-8572
usa@expormim.com
www.expormim.com

indoor

Cushions / confección

group 3 - ascendent Carlucci®



ascendent 090



ascendent 070



ascendent 071



ascendent 030



ascendent 093



ascendent 022



ascendent 040

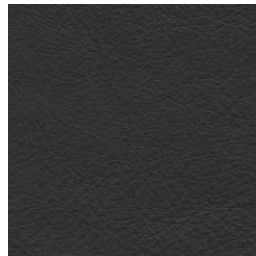
group 3 - elmosoft Elmo® leather



elmosoft 22024



elmosoft 93129



elmosoft 99999

indoor

Fontal Upholstered dining chair / silla tapizada

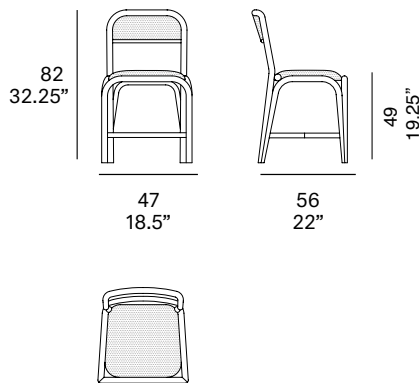
Oscar Tusquets Blanca, 2012/2017

T010 C



Dining chair with structure made of peeled and tinted natural rattan of 1.26" diameter. Finished with a three step water-based coating (dye, base coat and top coat) highly resistant to solar radiation thanks to UV filters. Upholstered seat and backrest. Possibility of customization through a wide variety of high performance technical fabrics. Protective caps with removable plastic-felt inserts.

Silla con estructura en rattan natural pelado y tintado de 32 mm de calibre. Acabado con recubrimiento en tres fases (tinte, fondo y acabado) con filtros UV que lo hacen altamente resistente a la radiación solar. Asiento y respaldo tapizados. Posibilidad de personalización mediante una amplia variedad de tejidos técnicos de altas prestaciones de uso. Tacos protectores reversibles de plástico-fielto.



Shipment details

Qty	1 dining chair (1 box)
Volume	0,24 m ³ / 8.5 ft ³
Gross weight	11 kg / 24.3 lb
Net weight	7 kg / 15.4 lb
Box dimensions (approx.)	49 x 58 x 85 cm 19.25" x 22.75" x 33.5"
Item dimensions (width x depth x height)	47 x 56 x 82 cm 18.5" x 22" x 32.25"
COM	1 m / 1.1 yd
	(1, 40 - 1,50 m / 54"-59")

Certifications

EN 16139:2013 (level: L1)
EN 1022:2005

Rattan

tinted



R10 natural



R03 noce



R06 verde oliva



R08 azzurro



R07 mogano



R24 cinder purple



R23 french grey



R05 grigio



R09 nero

lacquered



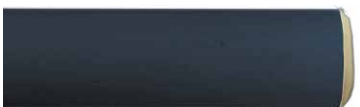
R02 bianco



R22 clay



R17 forest green



R16 navy blue



R14 japanese red



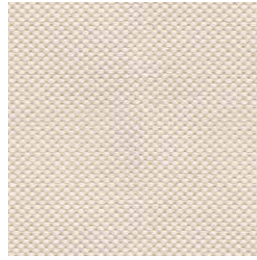
indoor

Cushions / confección

group 1 - natté Sunbrella®



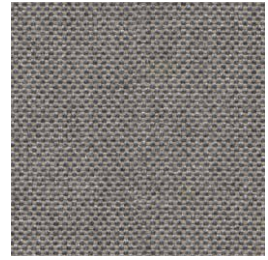
natté white



natté canvas



natté taupe chalk



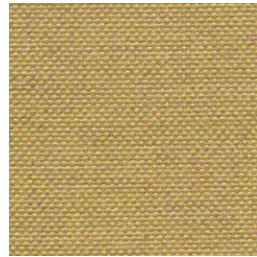
natté carbon beige



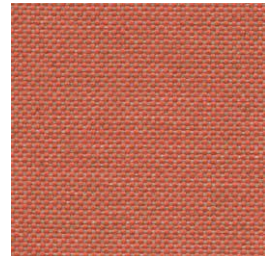
natté dark taupe



natté carbon sky



natté amber



natté flamingo

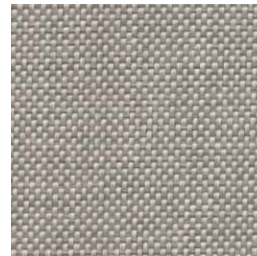
group 1 - dolce Crevin®



dolce 07



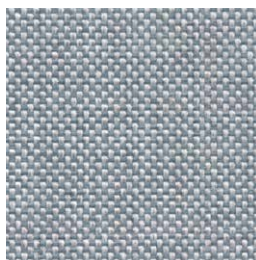
dolce 16



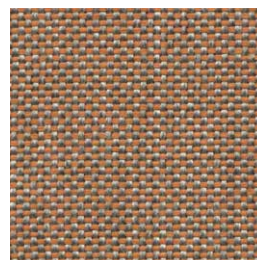
dolce 75



dolce 53



dolce 43



dolce 24



dolce 30

indoor

Cushions / confección

group 1 - valencia™ faux leather



valencia 1049



valencia 0020

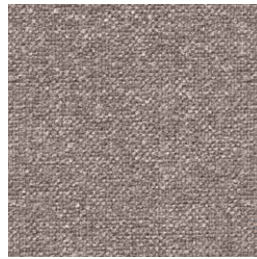


valencia 9035

group 2 - ito Crevin®



ito 05



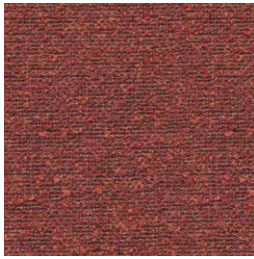
ito 18



ito 12



ito 71



ito 21



ito 20



ito 38



ito 45

group 2 - sacco Crevin®



sacco 02



sacco 05



sacco 11

indoor

Cushions / confección

group 3 - ascendent Carlucci®



ascendent 090



ascendent 070



ascendent 071



ascendent 030



ascendent 093



ascendent 022



ascendent 040

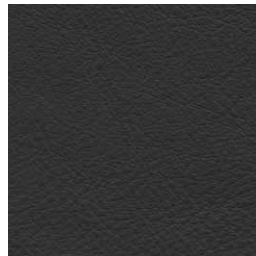
group 3 - elmosoft Elmo® leather



elmosoft 22024



elmosoft 93129



elmosoft 99999

indoor

Fontal

Upholstered dining armchair / sillón comedor tapizado

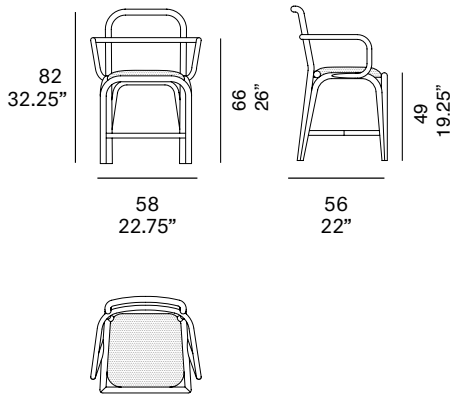
Oscar Tusquets Blanca, 2012/2017

T011 U



Dining armchair with structure made of peeled and tinted natural rattan of 1.26" diameter. Finished with a three step water-based coating (dye, base coat and top coat) highly resistant to solar radiation thanks to UV filters. Upholstered seat. Possibility of customization through a wide variety of high performance technical fabrics. Protective caps with removable plastic-felt inserts.

Sillón de comedor con estructura en rattan natural pelado y tintado de 32 mm de calibre. Acabado con recubrimiento en tres fases (tinte, fondo y acabado) con filtros UV que lo hacen altamente resistente a la radiación solar. Asiento tapizado. Posibilidad de personalización mediante una amplia variedad de tejidos técnicos de altas prestaciones de uso. Tacos protectores reversibles de plástico-fielto.



Shipment details

Qty	1 dining armchair (1 box)
Volume	0,28 m ³ / 9.9 ft ³
Gross weight	11 kg / 24.3 lb
Net weight	7 kg / 15.4 lb
Box dimensions (approx.)	59 x 57 x 84 cm 23.25" x 22.5" x 33"
Item dimensions (width x depth x height)	58 x 56 x 82 cm 22.75" x 22" x 32.25"
COM	0,60 m / 0.66 yd (1, 40 - 1,50 m / 54"-59")

Certifications

EN 16139:2013 (level: L1)
EN 1022:2005

Rattan

tinted



R10 natural



R03 noce



R06 verde oliva



R08 azzurro



R07 mogano



R24 cinder purple



R23 french grey



R05 grigio



R09 nero

lacquered



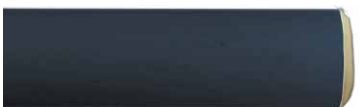
R02 bianco



R22 clay



R17 forest green



R16 navy blue



R14 japanese red



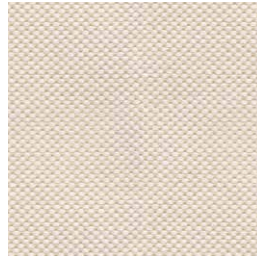
indoor

Cushions / confección

group 1 - natté Sunbrella®



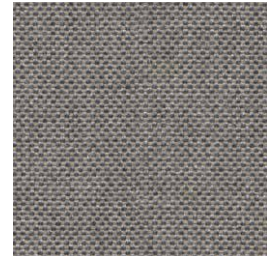
natté white



natté canvas



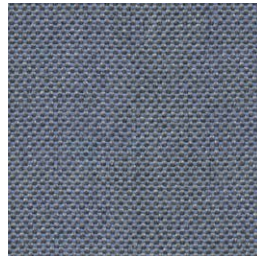
natté taupe chalk



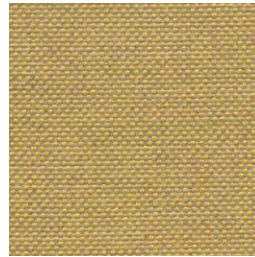
natté carbon beige



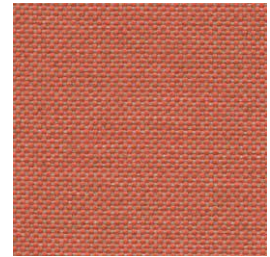
natté dark taupe



natté carbon sky



natté amber



natté flamingo

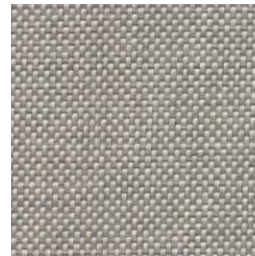
group 1 - dolce Crevin®



dolce 07



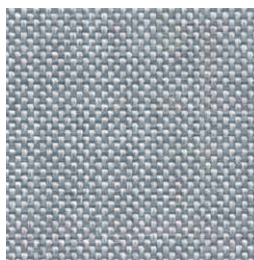
dolce 16



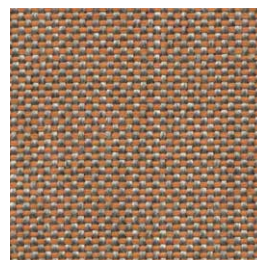
dolce 75



dolce 53



dolce 43



dolce 24



dolce 30

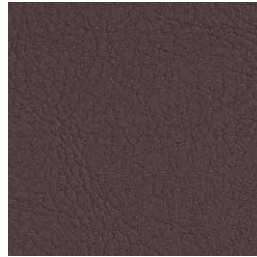
indoor

Cushions / confección

group 1 - valencia™ faux leather



valencia 1049



valencia 0020

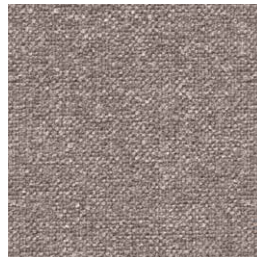


valencia 9035

group 2 - ito Crevin®



ito 05



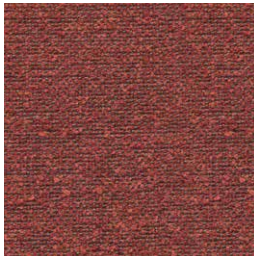
ito 18



ito 12



ito 71



ito 21



ito 20



ito 38



ito 45

group 2 - sacco Crevin®



sacco 02



sacco 05



sacco 11

expormim

Expormim S.A.
Pol. Ind. Jaime I
46640 Moixent (Valencia) Spain
+34 962 295 144/5
export@expormim.com
www.expormim.com

Expormim USA LLC
(212) 204-8572
usa@expormim.com
www.expormim.com

indoor

Cushions / confección

group 3 - ascendent Carlucci®



ascendent 090



ascendent 070



ascendent 071



ascendent 030



ascendent 093



ascendent 022



ascendent 040

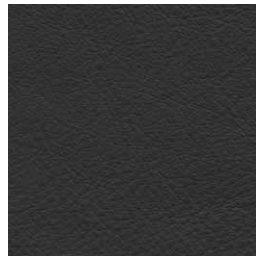
group 3 - elmosoft Elmo® leather



elmosoft 22024



elmosoft 93129



elmosoft 99999

indoor

Fontal

Upholstered dining armchair / sillón comedor tapizado

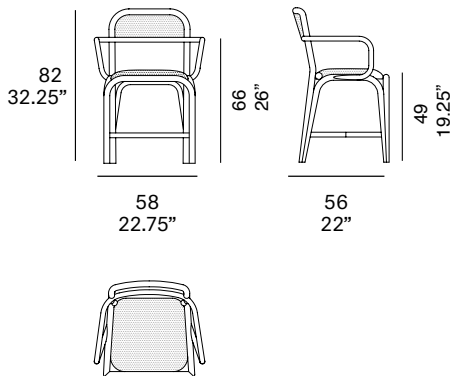
Oscar Tusquets Blanca, 2012/2017

T011 C



Dining armchair with structure made of peeled and tinted natural rattan of 1.26" diameter. Finished with a three step water-based coating (dye, base coat and top coat) highly resistant to solar radiation thanks to UV filters. Upholstered seat and backrest. Possibility of customization through a wide variety of high performance technical fabrics. Protective caps with removable plastic-felt inserts.

Sillón de comedor con estructura en rattan natural pelado y tintado de 32 mm de calibre. Acabado con recubrimiento en tres fases (tinte, fondo y acabado) con filtros UV que lo hacen altamente resistente a la radiación solar. Asiento y respaldo tapizados. Posibilidad de personalización mediante una amplia variedad de tejidos técnicos de altas prestaciones de uso. Tacos protectores reversibles de plástico-fieltro.



Shipment details

Qty	1 dining armchair (1 box)
Volume	0,28 m ³ / 9.9 ft ³
Gross weight	12 kg / 26.5 lb
Net weight	8 kg / 17.6 lb
Box dimensions (approx.)	59 x 57 x 84 cm 23.25" x 22.5" x 33"
Item dimensions (width x depth x height)	58 x 56 x 82 cm 22.75" x 22" x 32.25"
COM (1, 40 - 1,50 m / 54"-59")	1 m / 1.1 yd

Certifications

EN 16139:2013 (level: L1)
EN 1022:2005

Rattan

tinted



R10 natural



R03 noce



R06 verde oliva



R08 azzurro



R07 mogano



R24 cinder purple



R23 french grey



R05 grigio



R09 nero

lacquered



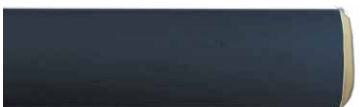
R02 bianco



R22 clay



R17 forest green



R16 navy blue



R14 japanese red



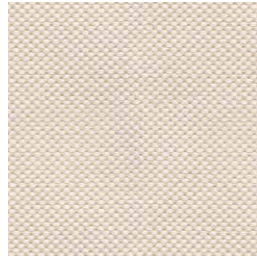
indoor

Cushions / confección

group 1 - natté Sunbrella®



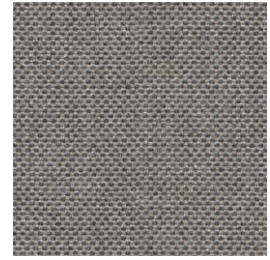
natté white



natté canvas



natté taupe chalk



natté carbon beige



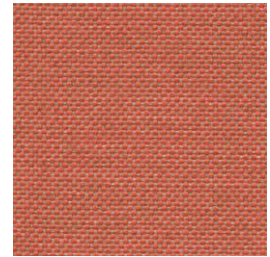
natté dark taupe



natté carbon sky



natté amber



natté flamingo

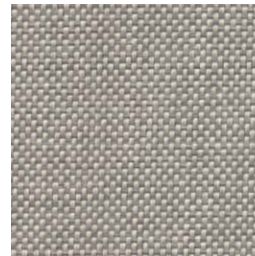
group 1 - dolce Crevin®



dolce 07



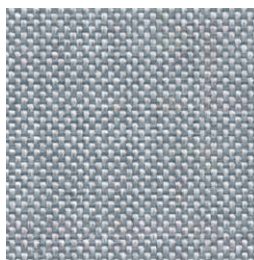
dolce 16



dolce 75



dolce 53



dolce 43



dolce 24



dolce 30

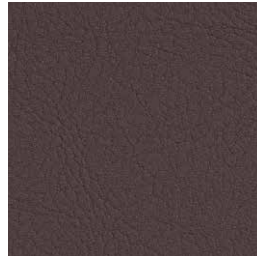
indoor

Cushions / confección

group 1 - valencia™ faux leather



valencia 1049



valencia 0020

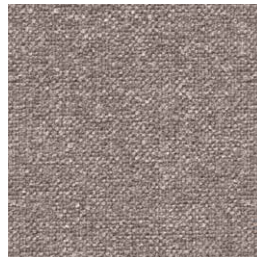


valencia 9035

group 2 - ito Crevin®



ito 05



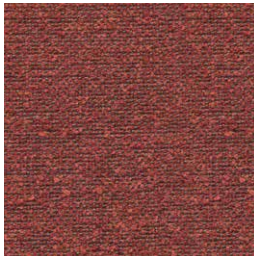
ito 18



ito 12



ito 71



ito 21



ito 20



ito 38



ito 45

group 2 - sacco Crevin®



sacco 02



sacco 05



sacco 11

expormim

Expormim S.A.
Pol. Ind. Jaime I
46640 Moixent (Valencia) Spain
+34 962 295 144/5
export@expormim.com
www.expormim.com

Expormim USA LLC
(212) 204-8572
usa@expormim.com
www.expormim.com

indoor

Cushions / confección

group 3 - ascendent Carlucci®



ascendent 090



ascendent 070



ascendent 071



ascendent 030



ascendent 093



ascendent 022



ascendent 040

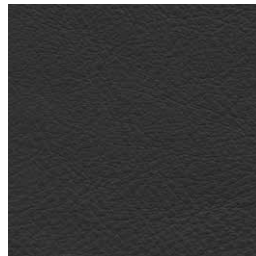
group 3 - elmosoft Elmo® leather



elmosoft 22024



elmosoft 93129



elmosoft 99999