

indoor

Cask Armchair / sillón

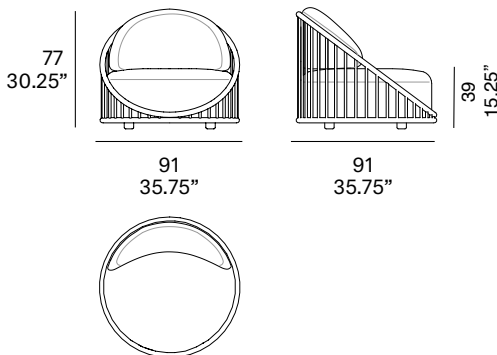
NORM Architects, 2021

T090 A



Armchair with structure made of peeled and tinted natural rattan of 34 mm/1.34" diameter. Backrest manufactured in peeled and tinted natural rattan of 20 mm/0.79" diameter. Finished with a three step water-based coating (dye, base coat and top coat) highly resistant to solar radiation thanks to UV filters. Possibility of customization through a wide variety of high performance technical fabrics. Protective caps with removable plastic-felt inserts.

Sillón con estructura en rattan natural pelado y tintado de 34 mm de calibre. Respaldo fabricado en rattan natural pelado y tintado de 20 mm de calibre. Acabado con recubrimiento en tres fases (tinte, fondo y acabado) con filtros UV que lo hacen altamente resistente a la radiación solar. Los acabados utilizados son en base al agua. Posibilidad de personalización mediante una amplia variedad de tejidos técnicos de altas prestaciones de uso. Tacos protectores reversibles de plástico-feltro.



Shipment details

Qty	1 armchair (1 box)
Volume	0,82 m ³ / 29 ft ³
Gross weight	25 kg / 55.1 lb
Net weight	20 kg / 44.1 lb
Box dimensions (approx.)	100 x 100 x 82 cm 39.25" x 39.25" x 32.25"
Item dimensions (width x depth x height)	91 x 91 x 77 cm 35.75" x 35.75" x 30.25"
COM (1, 40 - 1,50 m / 54"-59")	cushions: 2,80 m / 3.1 yd

expormim

Expormim S.A.
Pol. Ind. Jaime I
46640 Moixent (Valencia) Spain
+34 962 295 144/5
export@expormim.com
www.expormim.com

Expormim USA LLC
(212) 204-8572
usa@expormim.com
www.expormim.com

1/5

Rattan

Tinted



R10 natural



R03 noce



R06 verde oliva



R08 azzurro



R07 mogano



R24 cinder purple



R23 french grey



R05 grigio



R09 nero

Lacquered



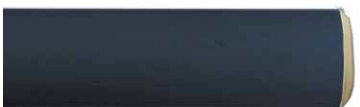
R02 bianco



R22 clay



R17 forest green



R16 navy blue



R14 japanese red



indoor

Cushions / confección

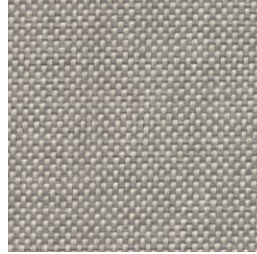
group 1 - dolce Crevin®



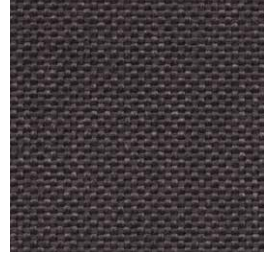
dolce 07



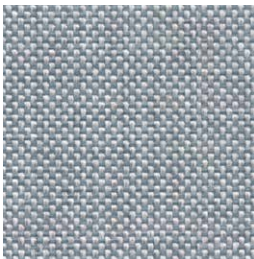
dolce 16



dolce 75



dolce 53



dolce 43



dolce 24



dolce 30

group 1 - valencia™ faux leather



valencia 1049



valencia 0020



valencia 9035

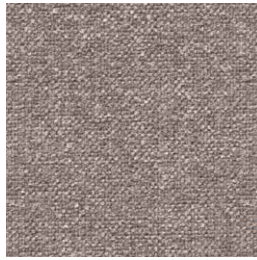
indoor

Cushions / confección

group 2 - ito Crevin®



ito 05



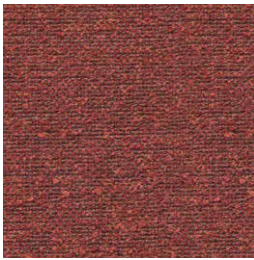
ito 18



ito 12



ito 71



ito 21



ito 20



ito 38



ito 45

group 2 - sacco Crevin®



sacco 02



sacco 05



sacco 11

indoor

Cushions / confección

group 3 - ascendent Carlucci®



ascendent 090



ascendent 070



ascendent 071



ascendent 030



ascendent 093



ascendent 022



ascendent 040

indoor

Cask Armchair / sillón

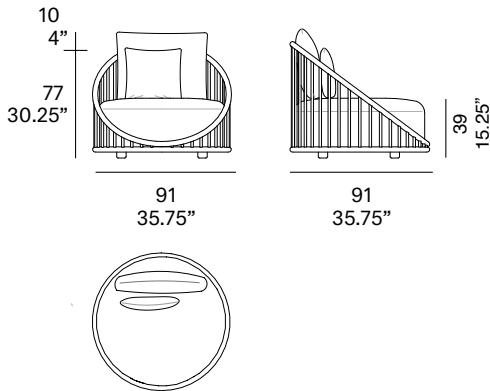
NORM Architects, 2021

T090 B



Armchair with structure made of peeled and tinted natural rattan of 34 mm/1.34" diameter. Backrest manufactured in peeled and tinted natural rattan of 20 mm/0.79" diameter. Finished with a three step water-based coating (dye, base coat and top coat) highly resistant to solar radiation thanks to UV filters. Possibility of customization through a wide variety of high performance technical fabrics. Protective caps with removable plastic-felt inserts. 1 loose cushion 45x45 cm/17.75"x 17.75" included.

Sillón con estructura en rattan natural pelado y tintado de 34 mm de calibre. Respaldo fabricado en rattan natural pelado y tintado de 20 mm de calibre. Acabado con recubrimiento en tres fases (tinte, fondo y acabado) con filtros UV que lo hacen altamente resistente a la radiación solar. Los acabados utilizados son en base al agua. Posibilidad de personalización mediante una amplia variedad de tejidos técnicos de altas prestaciones de uso. Tacos protectores reversibles de plástico-fieltro. 1 cojín decorativo de 45x45 cm incluido.



Shipment details

Qty	1 armchair (1 box)
Volume	0,82 m ³ / 29 ft ³
Gross weight	25,5 kg / 56.2 lb
Net weight	20,5 kg / 45.2 lb
Box dimensions (approx.)	100 x 100 x 82 cm 39.25" x 39.25" x 32.25"
Item dimensions (width x depth x height)	91 x 91 x 77 cm 35.75" x 35.75" x 30.25"
COM (1, 40 - 1,50 m / 54"-59")	cushions: 2,8 m / 3.1 yd loose cushion: 0,5 m / 0.55 yd

Rattan

Tinted



R10 natural



R03 noce



R06 verde oliva



R08 azzurro



R07 mogano



R24 cinder purple



R23 french grey



R05 grigio



R09 nero

Lacquered



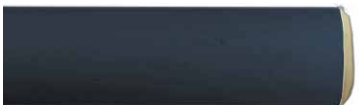
R02 bianco



R22 clay



R17 forest green



R16 navy blue



R14 japanese red



indoor

Cushions / confección

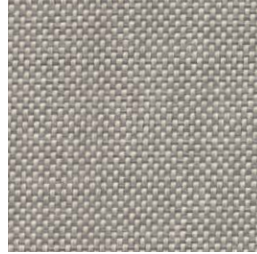
group 1 - dolce Crevin®



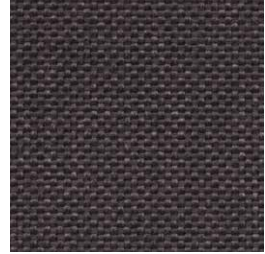
dolce 07



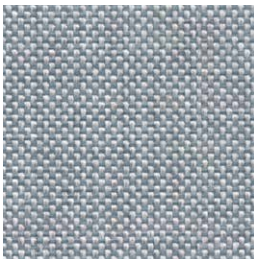
dolce 16



dolce 75



dolce 53



dolce 43



dolce 24



dolce 30

group 1 - valencia™ faux leather



valencia 1049



valencia 0020



valencia 9035

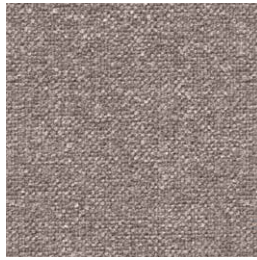
indoor

Cushions / confección

group 2 - ito Crevin®



ito 05



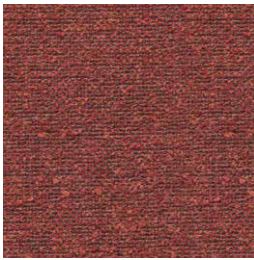
ito 18



ito 12



ito 71



ito 21



ito 20



ito 38



ito 45

group 2 - sacco Crevin®



sacco 02



sacco 05



sacco 11

expormim

Expormim S.A.
Pol. Ind. Jaime I
46640 Moixent (Valencia) Spain
+34 962 295 144/5
export@expormim.com
www.expormim.com

Expormim USA LLC
(212) 204-8572
usa@expormim.com
www.expormim.com

4/5

indoor

Cushions / confección

group 3 - ascendent Carlucci®



ascendent 090



ascendent 070



ascendent 071



ascendent 030



ascendent 093



ascendent 022



ascendent 040

Decorative cushions

Sunbrella®



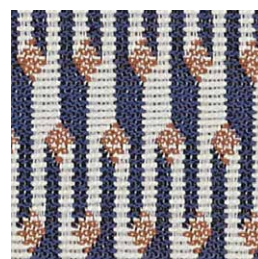
ikebana uyuni J369



ikebana safari J332



komo tawny J345



marquetry mistral J384



marquetry shamal J383