

indoor

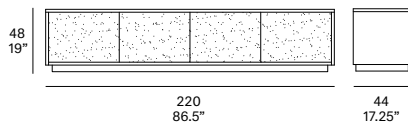
Basic 4 doors TV module / mueble TV 4 puertas

Studio expormim, 2012

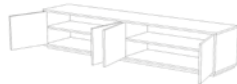
T320



lacquered doors



solid wood base
5 cm/2.2" high



4 doors / 4 puertas



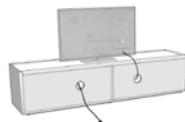
metallic legs
14 cm/5.5" high



optional interior drawers
cajoneras interiores opcionales



STANDARD



SPECIAL

All units are manufactured WITH NO STANDARD CABLE GROMMETS.
If needed, please indicate the place and position before placing an order.

Todos los muebles contenedores SE SIRVEN SIN AGUJEROS PASACABLES.
Indicar lugar y posición en caso de necesidad.

TV module made of solid wood from European oaks. Possibility to customize the doors by using different lacquered finishes. There are two options for the legs: solid wood base of 2" high and metallic legs of 5.5" high. Optional interior drawers. The collection is also available in European oak veneer.

Mueble TV fabricado en madera maciza de roble europeo. Posibilidad de personalizar las puertas mediante el empleo de diferentes acabados lacados. Existen dos opciones de patas: base de madera de 5 cm de altura y patas metálicas de 14 cm de altura. Cajoneras interiores opcionales. La colección también está disponible en tablero chapado de roble europeo.

Shipment details - with solid wood base

Qty	1 tv module (1 box)
Volume	0,58 m ³ / 20.5 ft ³
Gross weight	67 kg / 147.7 lb
Net weight	62 kg / 136.7 lb
Item dimensions (width x depth x height)	220 x 44 x 48 cm 86.5" x 17.25" x 19"

Shipment details - with metallic legs

Qty	1 tv module (2 boxes)
Volume	0,75 m ³ / 26.5 ft ³
Gross weight	83 kg / 189.6 lb
Net weight	78 kg / 172 lb
Item dimensions (width x depth x height)	220 x 44 x 57 cm 86.5" x 17.25" x 22.5"

expormim

Expormim S.A.
Pol. Ind. Jaime I
46640 Moixent (Valencia) Spain
+34 962 295 144/5
export@expormim.com
www.expormim.com

Expormim USA LLC
(212) 204-8572
usa@expormim.com
www.expormim.com

1/4

indoor

solid wood / madera



W01 natural oak



W03 light oak



W02 white stained



W04 black stained

veneered / tablero chapado



W01 natural oak



W03 light oak



W02 white stained



W04 black stained



indoor

Lacquered doors / puertas lacadas

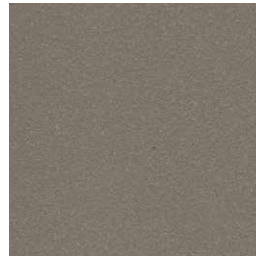
textured lacquers



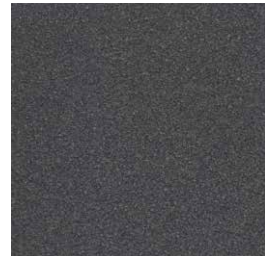
LT02 light grey



LT09 champagne



LT10 bronze

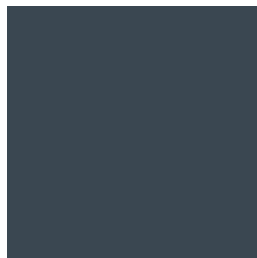


LT11 graphite

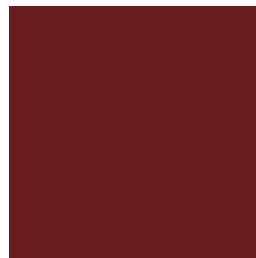
lacquers



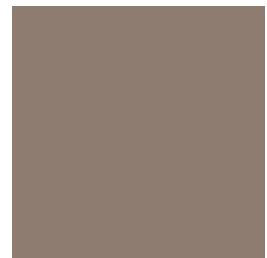
L17 forest green



L16 navy blue



L14 japanese red



L5 taupe

indoor

Metallic legs / patas metálicas



102 FT light grey
fine textured



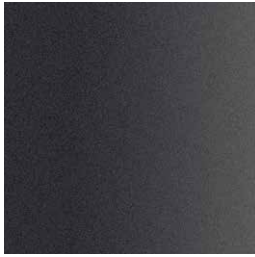
109 FT champagne
fine textured



110 FT bronze
fine textured



108 FT oxide
fine textured



111 FT graphite
fine textured

indoor

Basic

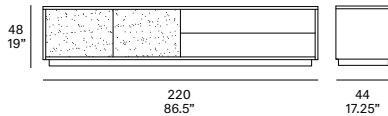
2 doors TV module / mueble TV 2 puertas

Studio expormim, 2012

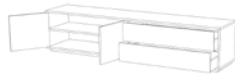
T321 R



lacquered doors



solid wood base
5 cm/2.2" high



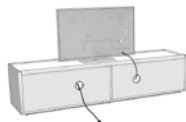
2 doors
2 puertas
2 drawers
2 cajones



metallic legs
14 cm/5.5" high



STANDARD



SPECIAL

All units are manufactured WITH NO STANDARD CABLE GROMMETS.
If needed, please indicate the place and position before placing an order.

Todos los muebles contenedores SE SIRVEN SIN AGUJEROS PASACABLES.
Indicar lugar y posición en caso de necesidad.

TV module made of solid wood from European oaks. Possibility to customize the doors by using different lacquered finishes. There are two options for the legs: solid wood base of 2" high and metallic legs of 5.5" high. The collection is also available in European oak veneer.

Mueble TV fabricado en madera maciza de roble europeo. Posibilidad de personalizar las puertas mediante el empleo de diferentes acabados lacados. Existen dos opciones de patas: base de madera de 5 cm de altura y patas metálicas de 14 cm de altura. La colección también está disponible en tablero chapado de roble europeo.

Shipment details - with solid wood base

Qty	1 tv module (1 box)
Volume	0,58 m ³ / 20.5 ft ³
Gross weight	67 kg / 147.7 lb
Net weight	62 kg / 136.7 lb
Item dimensions (width x depth x height)	220 x 44 x 48 cm 86.5" x 17.25" x 19"

Shipment details - with metallic legs

Qty	1 tv module (2 boxes)
Volume	0,75 m ³ / 26.5 ft ³
Gross weight	83 kg / 189.6 lb
Net weight	78 kg / 172 lb
Item dimensions (width x depth x height)	220 x 44 x 57 cm 86.5" x 17.25" x 22.5"

expormim

Expormim S.A.
Pol. Ind. Jaime I
46640 Moixent (Valencia) Spain
+34 962 295 144/5
export@expormim.com
www.expormim.com

Expormim USA LLC
(212) 204-8572
usa@expormim.com
www.expormim.com

1/4

indoor

solid wood / madera



W01 natural oak



W03 light oak



W02 white stained



W04 black stained

veneered / tablero chapado



W01 natural oak



W03 light oak



W02 white stained



W04 black stained



indoor

Lacquered doors / puertas lacadas

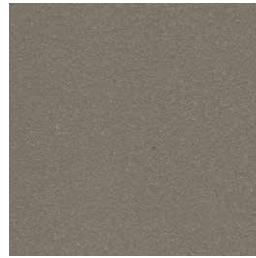
textured lacquers



LT02 light grey



LT09 champagne



LT10 bronze



LT11 graphite

lacquers



L17 forest green



L16 navy blue



L14 japanese red



L5 taupe

indoor

Metallic legs / patas metálicas



102 FT light grey
fine textured



109 FT champagne
fine textured



110 FT bronze
fine textured



108 FT oxide
fine textured



111 FT graphite
fine textured

indoor

Basic

2 doors TV module / mueble TV 2 puertas

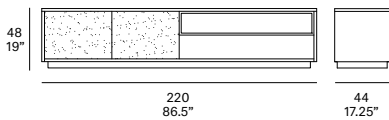
Studio expormim, 2012

T322 R



2 lacquered doors

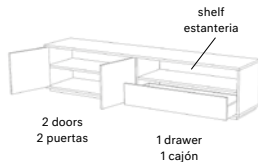
lacquered shelf



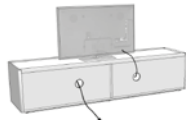
solid wood base
5 cm/2.2" high



metallic legs
14 cm/5.5" high



STANDARD



SPECIAL

All units are manufactured WITH NO STANDARD CABLE GROMMETS.
If needed, please indicate the place and position before placing an order.

Todos los muebles contenedores SE SIRVEN SIN AGUJEROS PASACABLES.
Indicar lugar y posición en caso de necesidad.

TV module made of solid wood from European oaks. Possibility to customize the doors and the shelf module by using different lacquered finishes. There are two options for the legs: solid wood base of 2" high and metallic legs of 5.5" high. The collection is also available in European oak veneer.

Mueble TV fabricado en madera maciza de roble europeo. Posibilidad de personalizar las puertas y el módulo estantería mediante el empleo de diferentes acabados lacados. Existen dos opciones de patas: base de madera de 5 cm de altura y patas metálicas de 14 cm de altura. La colección también está disponible en tablero chapado de roble europeo.

Shipment details - with solid wood base

Qty	1 tv module (1 box)
Volume	0,58 m ³ / 20.5 ft ³
Gross weight	67 kg / 147.7 lb
Net weight	62 kg / 136.7 lb
Item dimensions (width x depth x height)	220 x 44 x 48 cm 86.5" x 17.25" x 19"

Shipment details - with metallic legs

Qty	1 tv module (2 boxes)
Volume	0,75 m ³ / 26.5 ft ³
Gross weight	83 kg / 189.6 lb
Net weight	78 kg / 172 lb
Item dimensions (width x depth x height)	220 x 44 x 57 cm 86.5" x 17.25" x 22.5"

expormim

Expormim S.A.
Pol. Ind. Jaime I
46640 Moixent (Valencia) Spain
+34 962 295 144/5
export@expormim.com
www.expormim.com

Expormim USA LLC
(212) 204-8572
usa@expormim.com
www.expormim.com

1/5

indoor

solid wood / madera



W01 natural oak



W03 light oak



W02 white stained



W04 black stained

veneered / tablero chapado



W01 natural oak



W03 light oak



W02 white stained



W04 black stained



indoor

Lacquered doors / puertas lacadas

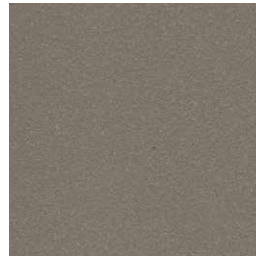
textured lacquers



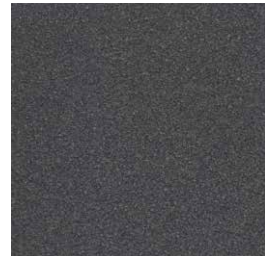
LT02 light grey



LT09 champagne



LT10 bronze



LT11 graphite

lacquers



L17 forest green



L16 navy blue



L14 japanese red



L5 taupe

indoor

Lacquered shelf / estantería lacada

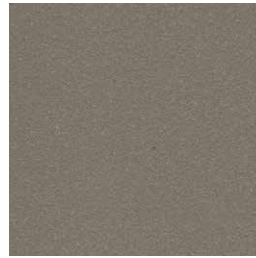
textured lacquers



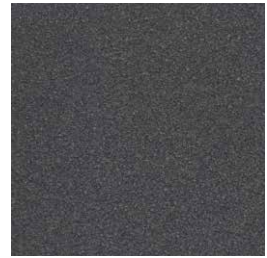
LT02 light grey



LT09 champagne



LT10 bronze



LT11 graphite

lacquers



L17 forest green



L16 navy blue



L14 japanese red



L5 taupe

indoor

Metallic legs / patas metálicas



102 FT light grey
fine textured



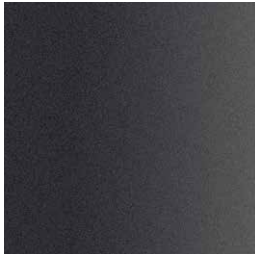
109 FT champagne
fine textured



110 FT bronze
fine textured



108 FT oxide
fine textured



111 FT graphite
fine textured

indoor

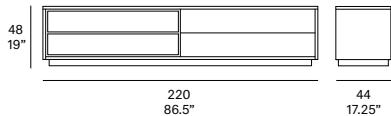
Basic TV module / mueble TV

Studio expormim, 2012

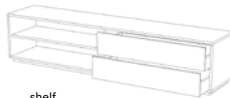
T323 R



lacquered shelf



solid wood base
5 cm/2.2" high



shelf
estantería

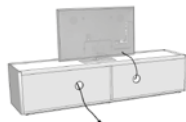
2 drawers
2 cajones



metallic legs
14 cm/5.5" high



STANDARD



SPECIAL

All units are manufactured WITH NO STANDARD CABLE GROMMETS.
If needed, please indicate the place and position before placing an order.

Todos los muebles contenedores SE SIRVEN SIN AGUJEROS PASACABLES.
Indicar lugar y posición en caso de necesidad.

TV module collection made of solid wood from European oaks. Possibility to customize the shelf module by using different lacquered finishes. There are two options for the legs: solid wood base of 2" high and metallic legs of 5.5" high. The collection is also available in European oak veneer.

Mueble TV íntegramente fabricado en madera maciza de roble europeo. Posibilidad de personalizar el módulo estantería mediante el empleo de diferentes acabados lacados. Existen dos opciones de patas: base de madera de 5 cm de altura y patas metálicas de 14 cm de altura. La colección también está disponible en tablero chapado de roble europeo.

Shipment details - with solid wood base

Qty	1 tv module (1 box)
Volume	0,58 m ³ / 20.5 ft ³
Gross weight	67 kg / 147.7 lb
Net weight	62 kg / 136.7 lb
Item dimensions (width x depth x height)	220 x 44 x 48 cm 86.5" x 17.25" x 19"

Shipment details - with metallic legs

Qty	1 tv module (2 boxes)
Volume	0,75 m ³ / 26.5 ft ³
Gross weight	83 kg / 189.6 lb
Net weight	78 kg / 172 lb
Item dimensions (width x depth x height)	220 x 44 x 57 cm 86.5" x 17.25" x 22.5"

expormim

Expormim S.A.
Pol. Ind. Jaime I
46640 Moixent (Valencia) Spain
+34 962 295 144/5
export@expormim.com
www.expormim.com

Expormim USA LLC
(212) 204-8572
usa@expormim.com
www.expormim.com

1/4

indoor

solid wood / madera



W01 natural oak



W03 light oak



W02 white stained



W04 black stained

veneered / tablero chapado



W01 natural oak



W03 light oak



W02 white stained



W04 black stained



indoor

Lacquered shelf / estantería lacada

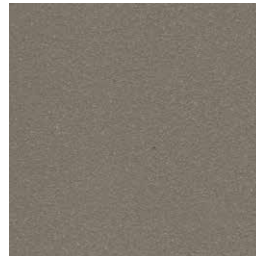
textured lacquers



LT02 light grey



LT09 champagne



LT10 bronze



LT11 graphite

lacquers



L17 forest green



L16 navy blue



L14 japanese red



L5 taupe

indoor

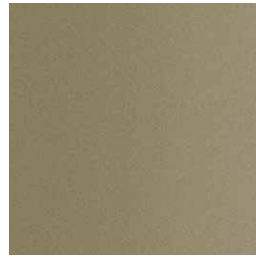
Metallic legs / patas metálicas



102 FT light grey
fine textured



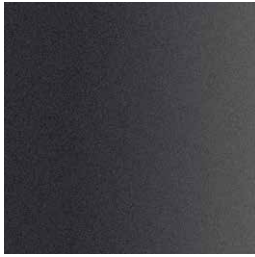
109 FT champagne
fine textured



110 FT bronze
fine textured



108 FT oxide
fine textured



111 FT graphite
fine textured

indoor

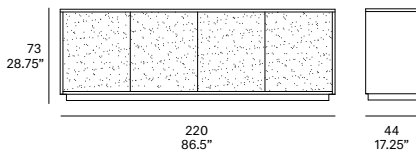
Basic 4 doors sideboard / aparador 4 puertas

Studio expormim, 2012

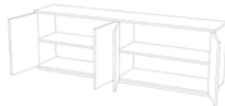
T340



lacquered doors



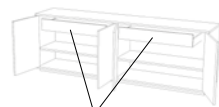
solid wood base
5 cm/2.2" high



4 doors / 4 puertas



metallic legs
14 cm/5.5" high



optional interior drawers
cajoneras interiores opcionales



STANDARD



SPECIAL

All units are manufactured WITH NO STANDARD CABLE GROMMETS.
If needed, please indicate the place and position before placing an order.

Todos los muebles contenedores SE SIRVEN SIN AGUJEROS PASACABLES.
Indicar lugar y posición en caso de necesidad.

Sideboard made of solid wood from European oaks. Possibility to customize the doors by using different lacquered finishes. There are two options for the legs: solid wood base of 2" high and metallic legs of 5.5" high. Optional interior drawers. The collection is also available in European oak veneer.

Aparador fabricado en madera maciza de roble europeo. Posibilidad de personalizar las puertas mediante el empleo de diferentes acabados lacados. Existen dos opciones de patas: base de madera de 5 cm de altura y patas metálicas de 14 cm de altura. Cajoneras interiores opcionales. La colección también está disponible en tablero chapado de roble europeo.

Shipment details - with solid wood base

Qty	1 sideboard (1 box)
Volume	0,86 m ³ / 30.4 ft ³
Gross weight	121 kg / 266.8 lb
Net weight	114 kg / 251.3 lb
Item dimensions (width x depth x height)	220 x 44 x 73 cm 86.5" x 17.25" x 28.75"

Shipment details - with metallic legs

Qty	1 sideboard (2 boxes)
Volume	1,03 m ³ / 36.4 ft ³
Gross weight	140 kg / 308.6 lb
Net weight	130 kg / 286.6 lb
Item dimensions (width x depth x height)	220 x 44 x 82 cm 86.5" x 17.25" x 32.25"

expormim

Expormim S.A.
Pol. Ind. Jaime I
46640 Moixent (Valencia) Spain
+34 962 295 144/5
export@expormim.com
www.expormim.com

Expormim USA LLC
(212) 204-8572
usa@expormim.com
www.expormim.com

1/4

indoor

solid wood / madera



W01 natural oak



W03 light oak



W02 white stained



W04 black stained

veneered / tablero chapado



W01 natural oak



W03 light oak



W02 white stained



W04 black stained



indoor

Lacquered doors / puertas lacadas

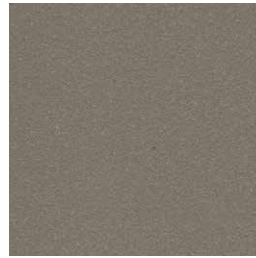
textured lacquers



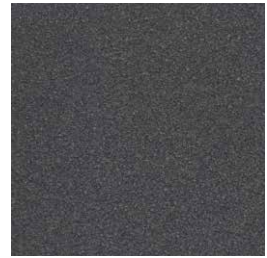
LT02 light grey



LT09 champagne



LT10 bronze



LT11 graphite

lacquers



L17 forest green



L16 navy blue



L14 japanese red



L5 taupe

indoor

Metallic legs / patas metálicas



102 FT light grey
fine textured



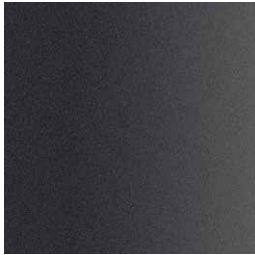
109 FT champagne
fine textured



110 FT bronze
fine textured



108 FT oxide
fine textured



111 FT graphite
fine textured

indoor

Basic

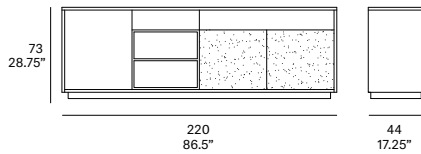
3 doors sideboard / aparador 3 puertas

Studio expormim, 2012

T341



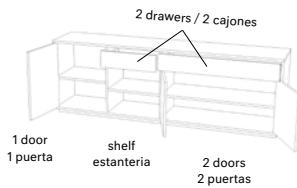
lacquered shelf lacquered doors



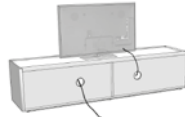
solid wood base
5 cm/2.2" high



metallic legs
14 cm/5.5" high



STANDARD



SPECIAL

All units are manufactured WITH NO STANDARD CABLE GROMMETS.
If needed, please indicate the place and position before placing an order.

Todos los muebles contenedores SE SIRVEN SIN AGUJEROS PASACABLES.
Indicar lugar y posición en caso de necesidad.

Sideboard made of solid wood from European oaks. Possibility to customize 2 doors and the shelf module by using different lacquered finishes. There are two options for the legs: solid wood base of 2" high and metallic legs of 5.5" high. The collection is also available in European oak veneer.

CAparador íntegramente fabricado en madera maciza de roble europeo. Posibilidad de personalizar 2 puertas y el módulo estantería mediante el empleo de diferentes acabados lacados. Existen dos opciones de patas: base de madera de 5 cm de altura y patas metálicas de 14 cm de altura. La colección también está disponible en tablero chapado de roble europeo.

Shipment details - with solid wood base

Qty	1 sideboard (1 box)
Volume	0,86 m ³ / 30.4 ft ³
Gross weight	121 kg / 266.8 lb
Net weight	114 kg / 251.3 lb
Item dimensions (width x depth x height)	220 x 44 x 73 cm 86.5" x 17.25" x 28.75"

Shipment details - with metallic legs

Qty	1 sideboard (2 boxes)
Volume	1,03 m ³ / 36.4 ft ³
Gross weight	140 kg / 308.6 lb
Net weight	130 kg / 286.6 lb
Item dimensions (width x depth x height)	220 x 44 x 82 cm 86.5" x 17.25" x 32.25"

expormim

Expormim S.A.
Pol. Ind. Jaime I
46640 Moixent (Valencia) Spain
+34 962 295 144/5
export@expormim.com
www.expormim.com

Expormim USA LLC
(212) 204-8572
usa@expormim.com
www.expormim.com

1/5

indoor

solid wood / madera



W01 natural oak



W03 light oak



W02 white stained



W04 black stained

veneered / tablero chapado



W01 natural oak



W03 light oak



W02 white stained



W04 black stained



indoor

Lacquered doors / puertas lacadas

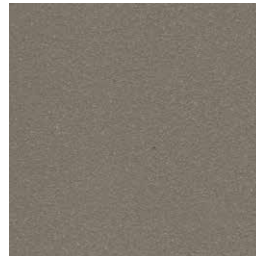
textured lacquers



LT02 light grey



LT09 champagne



LT10 bronze



LT11 graphite

lacquers



L17 forest green



L16 navy blue



L14 japanese red



L5 taupe

indoor

Lacquered shelf / estantería lacada

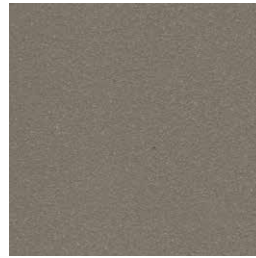
textured lacquers



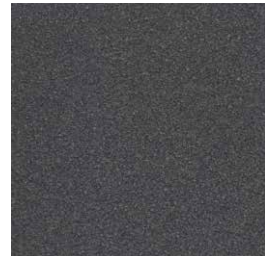
LT02 light grey



LT09 champagne



LT10 bronze



LT11 graphite

lacquers



L17 forest green



L16 navy blue



L14 japanese red



L5 taupe

indoor

Metallic legs / patas metálicas



102 FT light grey
fine textured



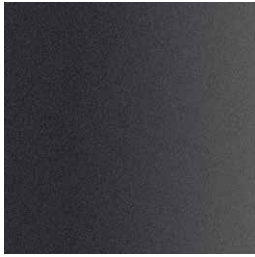
109 FT champagne
fine textured



110 FT bronze
fine textured



108 FT oxide
fine textured



111 FT graphite
fine textured

indoor

Basic

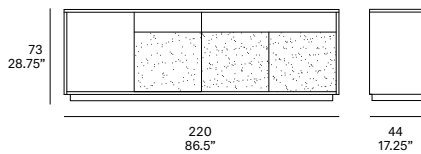
4 doors sideboard / aparador 4 puertas

Studio expormim, 2012

T342



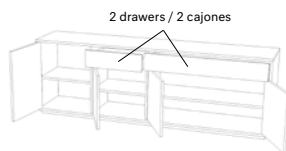
3 lacquered doors



solid wood base
5 cm / 2.2" high



metallic legs
14 cm / 5.5" high

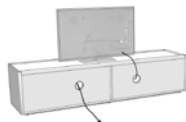


2 drawers / 2 cajones

4 doors / 4 puertas



STANDARD



SPECIAL

All units are manufactured WITH NO STANDARD CABLE GROMMETS.
If needed, please indicate the place and position before placing an order.

Todos los muebles contenedores SE SIRVEN SIN AGUJEROS PASACABLES.
Indicar lugar y posición en caso de necesidad.

Sideboard made of solid wood from European oaks. Possibility to customize 3 doors by using different lacquered finishes. There are two options for the legs: solid wood base of 2" high and metallic legs of 5.5" high. The collection is also available in European oak veneer.

Aparador íntegramente fabricado en madera maciza de roble europeo. Posibilidad de personalizar 3 puertas mediante el empleo de diferentes acabados lacados. Existen dos opciones de patas: base de madera de 5 cm de altura y patas metálicas de 14 cm de altura. La colección también está disponible en tablero chapado de roble europeo.

Shipment details - with solid wood base

Qty	1 sideboard (1 box)
Volume	0,86 m ³ / 30.4 ft ³
Gross weight	121 kg / 266.8 lb
Net weight	114 kg / 251.3 lb
Item dimensions (width x depth x height)	220 x 44 x 73 cm 86.5" x 17.25" x 28.75"

Shipment details - with metallic legs

Qty	1 sideboard (2 boxes)
Volume	1,03 m ³ / 36.4 ft ³
Gross weight	140 kg / 308.6 lb
Net weight	130 kg / 286.6 lb
Item dimensions (width x depth x height)	220 x 44 x 82 cm 86.5" x 17.25" x 32.25"

expormim

Expormim S.A.
Pol. Ind. Jaime I
46640 Moixent (Valencia) Spain
+34 962 295 144/5
export@expormim.com
www.expormim.com

Expormim USA LLC
(212) 204-8572
usa@expormim.com
www.expormim.com

1/4

indoor

solid wood / madera



W01 natural oak



W03 light oak



W02 white stained



W04 black stained

veneered / tablero chapado



W01 natural oak



W03 light oak



W02 white stained



W04 black stained



indoor

Lacquered doors / puertas lacadas

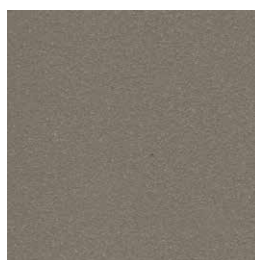
textured lacquers



LT02 light grey



LT09 champagne



LT10 bronze

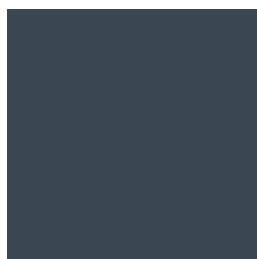


LT11 graphite

lacquers



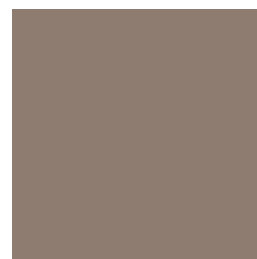
L17 forest green



L16 navy blue



L14 japanese red



L5 taupe

indoor

Metallic legs / patas metálicas



102 FT light grey
fine textured



109 FT champagne
fine textured



110 FT bronze
fine textured



108 FT oxide
fine textured



111 FT graphite
fine textured

indoor

Basic

4 doors module / mueble 4 puertas

Studio expormim, 2012

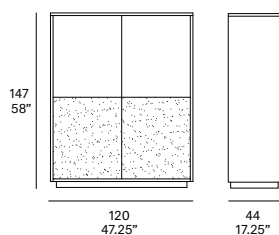
T350



2 lacquered doors

Furniture made of solid wood from European oaks. Possibility to customize 2 doors by using different lacquered finishes. There are two options for the legs: solid wood base of 2" high and metallic legs of 5.5" high. The collection is also available in European oak veneer.

Mueble íntegramente fabricado en madera maciza de roble europeo. Posibilidad de personalizar 2 puertas mediante el empleo de diferentes acabados lacados. Existen dos opciones de patas: base de madera de 5 cm de altura y patas metálicas de 14 cm de altura. La colección también está disponible en tablero chapado de roble europeo.



solid wood base
5 cm/2.2" high



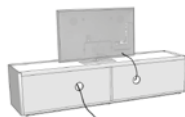
metallic legs
14 cm/5.5" high



4 doors / 4 puertas



STANDARD



SPECIAL

Shipment details - with solid wood base

Qty	1 furniture (1 box)
Volume	0,94 m ³ / 33.2 ft ³
Gross weight	105 kg / 231.5 lb
Net weight	99 kg / 218.3 lb
Item dimensions (width x depth x height)	120 x 44 x 147 cm 47.25" x 17.25" x 58"

Shipment details - with metallic legs

Qty	1 furniture (2 boxes)
Volume	1,04 m ³ / 36.7 ft ³
Gross weight	119 kg / 262.3 lb
Net weight	110 kg / 242.5 lb
Item dimensions (width x depth x height)	120 x 44 x 156 cm 47.25" x 17.25" x 61.5"

All units are manufactured WITH NO STANDARD CABLE GROMMETS.
If needed, please indicate the place and position before placing an order.

Todos los muebles contenedores SE SIRVEN SIN AGUJEROS PASACABLES.
Indicar lugar y posición en caso de necesidad.

expormim

Expormim S.A.
Pol. Ind. Jaime I
46640 Moixent (Valencia) Spain
+34 962 295 144/5
export@expormim.com
www.expormim.com

Expormim USA LLC
(212) 204-8572
usa@expormim.com
www.expormim.com

1/4

indoor

solid wood / madera



W01 natural oak



W03 light oak



W02 white stained



W04 black stained

veneered / tablero chapado



W01 natural oak



W03 light oak



W02 white stained



W04 black stained



indoor

Lacquered doors / puertas lacadas

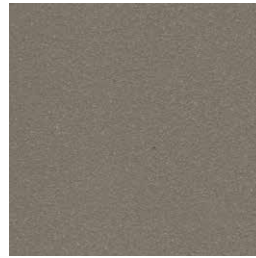
textured lacquers



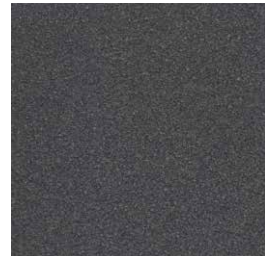
LT02 light grey



LT09 champagne



LT10 bronze



LT11 graphite

lacquers



L17 forest green



L16 navy blue



L14 japanese red



L5 taupe

indoor

Metallic legs / patas metálicas



102 FT light grey
fine textured



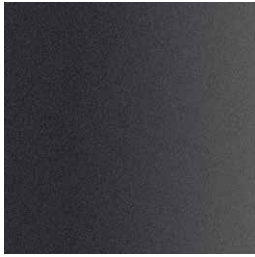
109 FT champagne
fine textured



110 FT bronze
fine textured



108 FT oxide
fine textured



111 FT graphite
fine textured

indoor

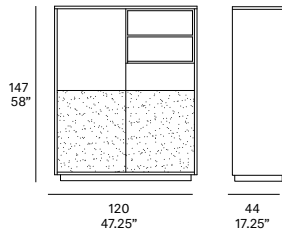
Basic 3 doors module / mueble 3 puertas

Studio expormim, 2012

T351 R



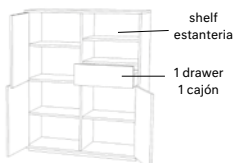
lacquered shelf
2 lacquered doors



solid wood base
5 cm/2.2" high



metallic legs
14 cm/5.5" high



3 doors / 3 puertas



STANDARD



SPECIAL

Furniture made of solid wood from European oaks. Possibility to customize 2 doors and the shelf module by using different lacquered finishes. There are two options for the legs: solid wood base of 2" high and metallic legs of 5.5" high. The collection is also available in European oak veneer.

Mueble íntegramente fabricado en madera maciza de roble europeo. Posibilidad de personalizar 2 puertas y el módulo estantería mediante el empleo de diferentes acabados lacados. Existen dos opciones de patas: base de madera de 5 cm de altura y patas metálicas de 14 cm de altura. La colección también está disponible en tablero chapado de roble europeo.

Shipment details - with solid wood base

Qty	1 furniture (1 box)
Volume	0,94 m ³ / 33.2 ft ³
Gross weight	105 kg / 231.5 lb
Net weight	99 kg / 218.3 lb

Item dimensions
(width x depth x height) 120 x 44 x 147 cm
47.25" x 17.25" x 58"

Shipment details - with metallic legs

Qty	1 furniture (2 boxes)
Volume	1,04 m ³ / 36.7 ft ³
Gross weight	119 kg / 262.3 lb
Net weight	110 kg / 242.5 lb

Item dimensions
(width x depth x height) 120 x 44 x 156 cm
47.25" x 17.25" x 61.5"

All units are manufactured WITH NO STANDARD CABLE GROMMETS.
If needed, please indicate the place and position before placing an order.

Todos los muebles contenedores SE SIRVEN SIN AGUJEROS PASACABLES.
Indicar lugar y posición en caso de necesidad.

expormim

Expormim S.A.
Pol. Ind. Jaime I
46640 Moixent (Valencia) Spain
+34 962 295 144/5
export@expormim.com
www.expormim.com

Expormim USA LLC
(212) 204-8572
usa@expormim.com
www.expormim.com

1/5

indoor

solid wood / madera



W01 natural oak



W03 light oak



W02 white stained



W04 black stained

veneered / tablero chapado



W01 natural oak



W03 light oak



W02 white stained



W04 black stained



indoor

Lacquered doors / puertas lacadas

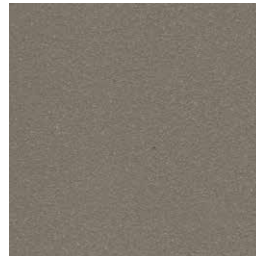
textured lacquers



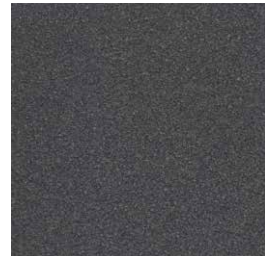
LT02 light grey



LT09 champagne



LT10 bronze



LT11 graphite

lacquers



L17 forest green



L16 navy blue



L14 japanese red



L5 taupe

indoor

Lacquered shelf / estantería lacada

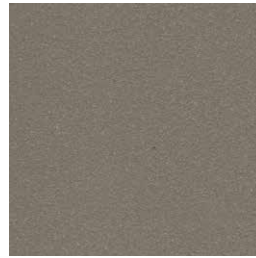
textured lacquers



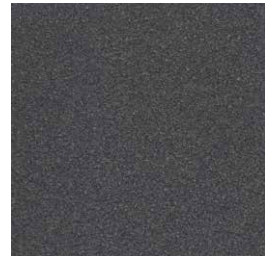
LT02 light grey



LT09 champagne



LT10 bronze



LT11 graphite

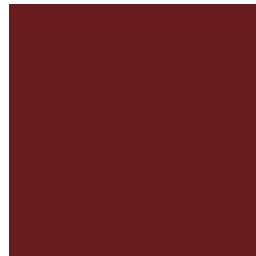
lacquers



L17 forest green



L16 navy blue



L14 japanese red



L5 taupe

indoor

Metallic legs / patas metálicas



102 FT light grey
fine textured



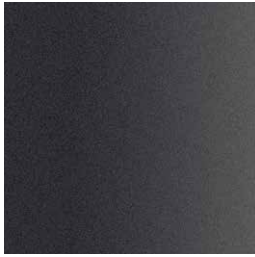
109 FT champagne
fine textured



110 FT bronze
fine textured



108 FT oxide
fine textured



111 FT graphite
fine textured