



A R C H

simon

Arch is simplicity and elegance. Exciting lines, with a circle or square of light. Arch can be grouped together and orientated; this luminaire can be recessed, trimless or surface-mounted.

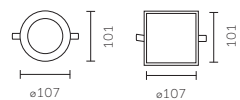
Arch is suitable for general lighting or for highlighting a particular space.

Josep Llusçà design for Simon

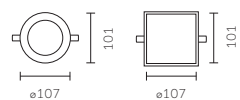




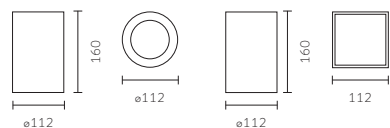
Arch Recessed



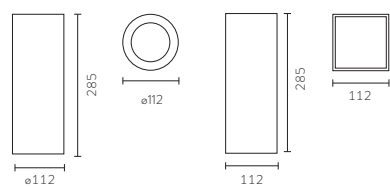
Arch Trimless



Arch S



Arch L



Arch

Arch is versatile. It is for general and accent lighting. The range's possibilities for design and lighting let the designer create atmospheres and sensations. Its modulation makes it suitable for different spaces, depending on appearance requirements.

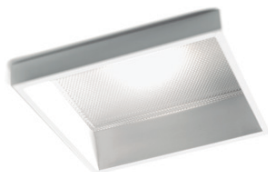
TECHNICAL ELEGANCE





360° vertical axis rotation,
25° horizontal axis rotation

A R C H



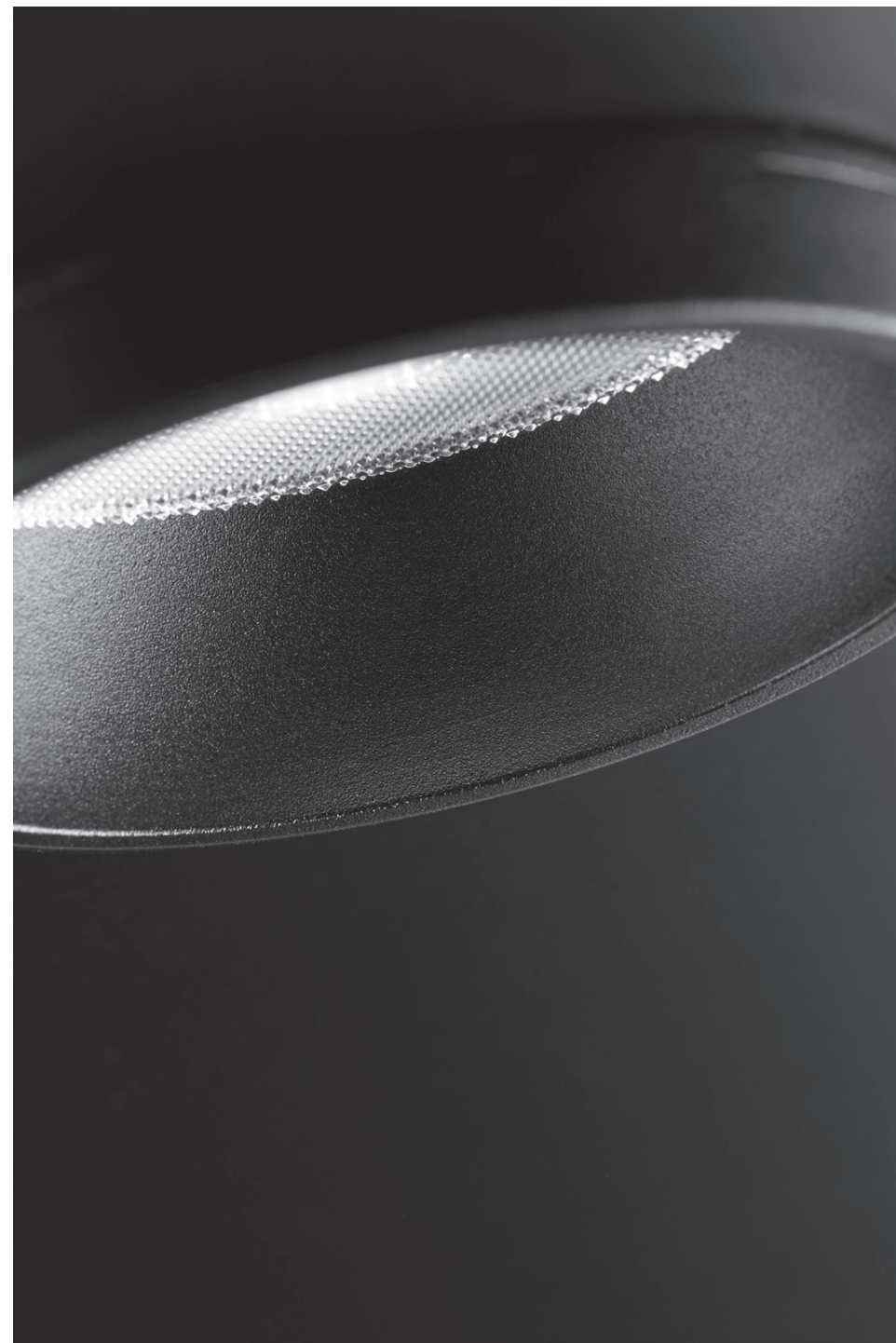
25° rotation on the horizontal axis

DOUBLE ORIENTATION LIGHTING

An innovative bidirectional rotation system designed for round versions, achieving a 360° vertical axis rotation and 25° horizontal axis rotation.

This system lets you aim light in any direction without needing to move the luminaire.

Square versions allow 25° horizontal rotation to easily direct light flux without needing tools.



ARCH RECESSED

ARCH TRIMLESS

ARCH S

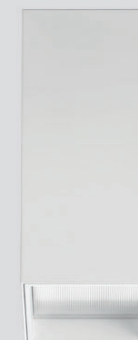
ARCH L

ARCH RECESSED

ARCH TRIMLESS

ARCH S

ARCH L



20°



36°



60°

Finishes:

● Black

● White

PRODUCT COLLECTION

Arch is available in recessed versions that allow seamless integration into suspended ceilings, and surface-mounted versions for adjacent installation. A collection available in square and circular shapes with black and white finishes, as well as with various optical options that allow it to cover different lighting needs and completely integrate into the architectural space.

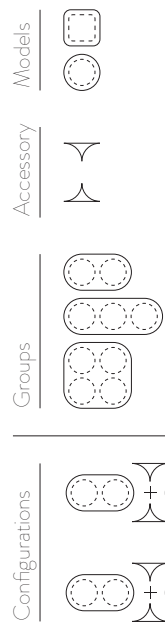
EFFICIENCY AND COMFORT

120

The Arch optical group emits light that generates a diffused appearance, illuminating the entire diffuser of the luminaire to offer a stylish appearance and a sensation of exceptional visual comfort.

Optics Spot 20°, Flood 36° and Wide Flood 60°, easily adjustable.



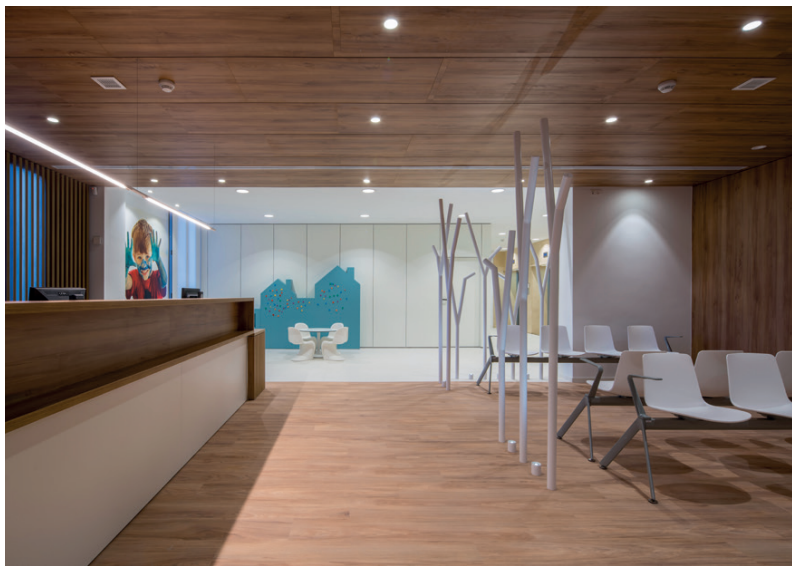


ARCH

COMPOSITIONS

Arch allows the creation of luminaire groups and extensive compositional possibilities in order to adapt to different spaces and needs, combining various lighting types under the same aesthetic.







X-Less system. See page 208

A R C H

INTEGRATED
IN SPACE

The new patented X-Less installation system allows the luminaire's seamless integration into the wall, ensuring excellent lighting quality and avoiding any surface imperfections. It's ideal for the most demanding interior design projects.

