

TORRES CLAVÉ

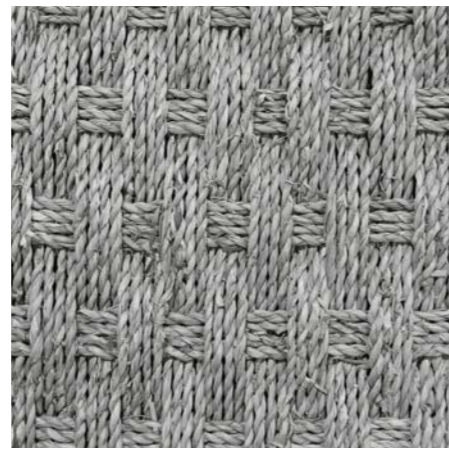
Josep Torres Clavé - 1934



Josep Torres Clavé

Architect, town planner, designer and pedagogue. Founder member of GATPAC and driving force behind rationalist theories. He introduced new concepts in housing and design. He spread "sharp awareness" of economic fact and a desire to serve, a scientific notion of human co-existence and technique as an instrument of progress. Together with Josep Lluís Sert he produced some of the most emblematic works in Catalan rationalism.

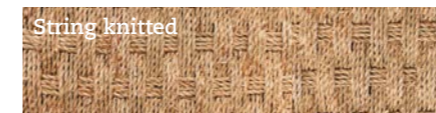
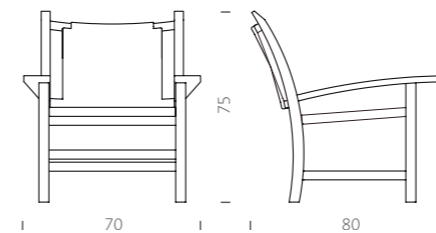




The architect Josep Torres Clavé created this armchair in 1934, drawing inspiration from the traditional models used in Ibiza (cadirats). The armchair was used to furnish the prestigious Pavilion of the Spanish Republic at the International Exposition in Paris in 1937, together with works as Picasso's Guernica, Alexander Calder's Mercury Fountain and Miró's Catalan Farmer.



Pavilion of the Spanish Republic at the International Exposition in Paris in 1937



Forest Stewardship Council (FSC)

Permanent Collection of the Museum of Design in Barcelona, 1994

ENG The armchair combines oak structure and knitted string seat and backrest. Its classical and historic value and the beauty of its materials and extraordinary comfort makes it particularly suitable to use in hotels, reception areas, lounges and reading rooms in libraries and special areas.

ESP La butaca Torres Clavé combina una estructura de madera de roble con asiento y respaldo tejido con cuerda de manufactura artesanal. Su valor clásico e histórico, así como el atractivo de los materiales y su notable confort la hacen especialmente adecuada para ámbitos de hostelería, recepción y salas de estar, lectura en bibliotecas y espacios de carácter singular.

CAT La butaca Torres Clavé combina una estructura de fusta de roure amb seient i respall teixit amb corda de manufactura artesanal. El seu valor clàssic i històric, així com l'atractiu dels materials i el seu notable confort la fan especialment adequada per àmbits d'hoteleria, recepció i sales d'estar, lectura en biblioteques i espais de caràcter singular.

FRA Le fauteuil Torres Clavé combine une structure de bois de chêne avec assise et dossier en tissu de cordage. Son valeur classique et historique, ainsi que l'attrait des matériaux et son confort notable le rendent spécialement adéquat pour les espaces de l'hôtellerie, réceptions, salons et espaces de caractère singulier.