

“Coqueta” dining chair / silla

T110 R

IN

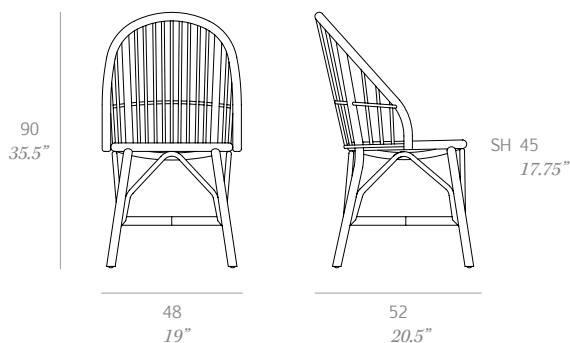


Dining chair with structure made of peeled and tinted natural rattan 28 mm/1.1" in diameter. Backrest manufactured in peeled and tinted natural rattan 10 mm/0.4" in diameter. Finished with a three step coating (dye, base coat and top coat) highly resistant to solar radiation thanks to UV filters. Seat with peeled and tinted natural rattan 10 mm/0.4" in diameter. Protective caps with removable plastic-felt inserts.

Silla con estructura en rattan natural pelado y tintado de 28 mm de calibre. Respaldo fabricado en rattan natural pelado y tintado de 10 mm de calibre. Acabado con recubrimiento en tres fases (tinte, fondo y acabado) con filtro UV que lo hacen altamente resistente a la radiación solar. Asiento acabado en rattan natural pelado y tintado de 10 mm de calibre. Tacos protectores reversibles de plástico-fieltro.

Shipment details

Qty	1 dining chair (1 box)
Volume	0,28 m ³ / 9.9 ft ³
Gross weight	9 kg / 20 lb
Net weight	5 kg / 11 lb
Item dimensions (width x depth x height)	48 x 52 x 90 cm 19" x 20.5" x 35.5"



Certifications

UNE EN 16139:2012 (nivel L1)
UNE EN 1022:2005

“Coqueta” upholstered dining chair / *silla tapizada*

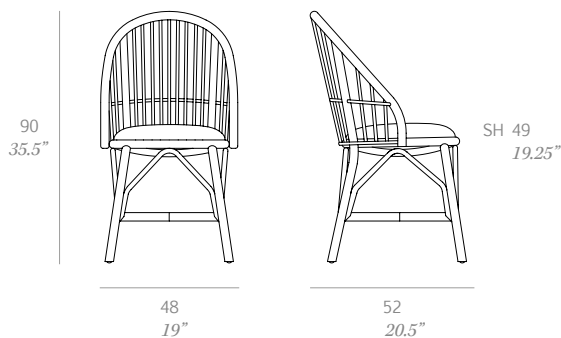
T110 U

IN



Dining chair with structure made of peeled and tinted natural rattan 28 mm/1.1" in diameter. Backrest manufactured in peeled and tinted natural rattan 10 mm/0.4" in diameter. Finished with a three step coating (dye, base coat and top coat) highly resistant to solar radiation thanks to UV filters. Upholstered seat in natural or faux leather, virgin wool fabrics, velvet and polypropylene. Protective caps with removable plastic-felt inserts.

Silla con estructura en rattan natural pelado y tintado de 28 mm de calibre. Respaldo fabricado en rattan natural pelado y tintado de 10 mm de calibre. Acabado con recubrimiento en tres fases (tinte, fondo y acabado) con filtro UV que lo hacen altamente resistente a la radiación solar. Asiento tapizado en piel natural o sintética, tejidos en lana virgen, terciopelo y polipropileno. Tacos protectores reversibles de plástico-fieltro.



Shipment details

Qty	1 dining chair (1 box)
Volume	0,28 m ³ / 9.9 ft ³
Gross weight	10 kg / 20 lb
Net weight	6 kg / 11 lb
Item dimensions (width x depth x height)	48 x 52 x 90 cm 19" x 20.5" x 35.5"
COM (1, 40 - 1,50 m / 54"-59")	0,60 m / 0.70 yd

Certifications

UNE EN 16139:2012 (nivel L1)
UNE EN 1022:2005

Structure / estructura

rattan



R01 naturale



R03 noce



R05 grigio



R07 mogano



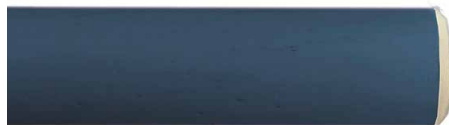
R08 azzurro



R06 verde oliva



R14 japanese red



R16 navy blue



R17 forest green



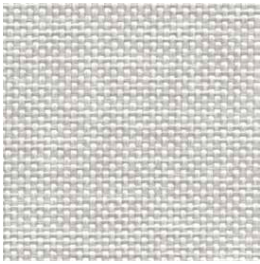
R02 bianco



R09 nero

Upholstered / tapizado

group 1 - dolce Crevin®



dolce 07



dolce 05



dolce 53



dolce 47



dolce 24



dolce 30

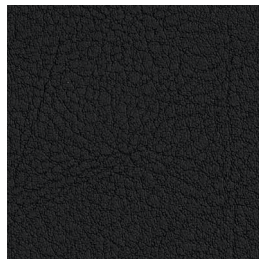
group 1 - valencia™ faux leather



valencia 1049



valencia 0020



valencia 9035

Please see Indoor fabrics Cut Sheet for more details / Consulte las fichas técnicas de los tejidos Indoor para más detalles.

Upholstered / tapizado

group 2 - remix 2 Kvadrat®



remix 113

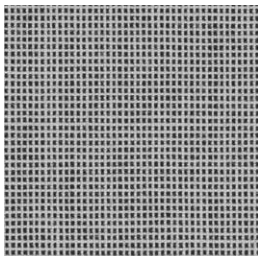


remix 233

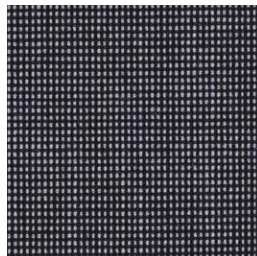


remix 393

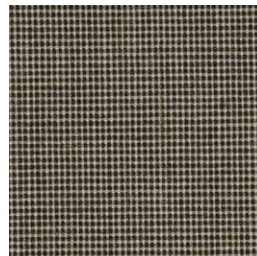
group 2 - umami Kvadrat®



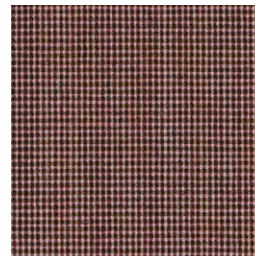
umami 111



umami 191



umami 251



umami 441

group 2 - harald 3 Kvadrat® / Raf Simons



harald 242



harald 283



harald 582



harald 982

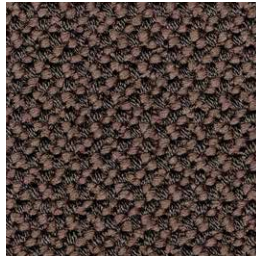
Please see Indoor fabrics Cut Sheet for more details / Consulte las fichas técnicas de los tejidos Indoor para más detalles.

Upholstered / tapizado

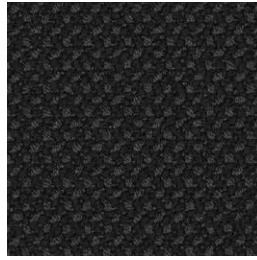
group 2 - credo Rohi®



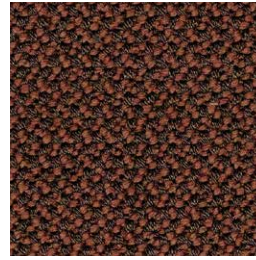
credo jasmin



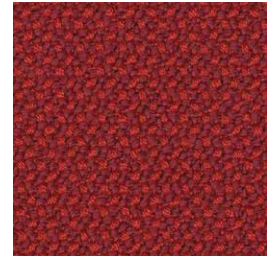
credo walnut



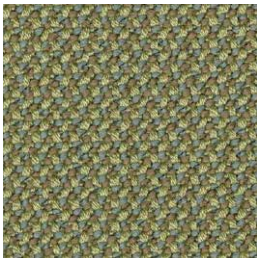
credo black



credo kupfer



credo heart



credo pistazie

group 3 - elmosoft Elmo® leather



elmosoft 02020



elmosoft 93129



elmosoft 99999

Please see Indoor fabrics Cut Sheet for more details / Consulte las fichas técnicas de los tejidos Indoor para más detalles.