

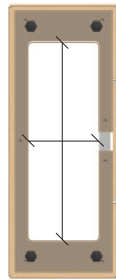
Encore Base



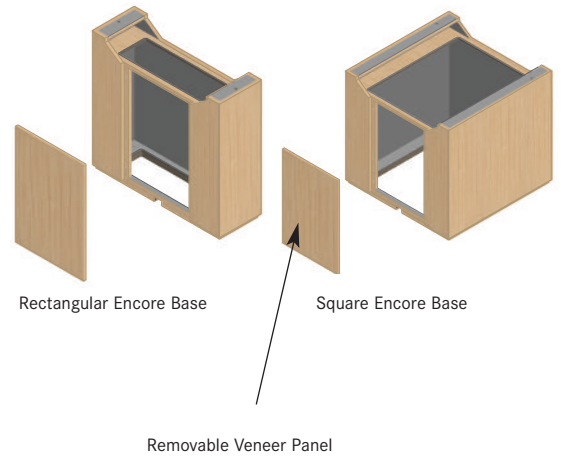
The Encore conference table features bases of quarter cut wood veneer panels that are mitered on the outside corners. The bases are available in both rectangular and square as well as veneer and laminate. The Encore base also offers a modesty panel option to conceal power between the bases. See modesty panel section for sizes. Bases and tops are specified and sold separately. See the specific top size desired for the appropriate number of bases required.

The Encore conference table collection is available upon request with certifications for level® 1, GREENGUARD and FSC Chain-of-Custody. Requests must be made in writing in advance of or during the quoting process as upcharges may apply. For complete information regarding the level 1, GREENGUARD and FSC certifications for Encore, please contact bgreen@bernhardt.com.

Approved for GSA Contract GS-28F-7040G.



Bottom View
 Clear Opening Dimensions:
 20" Rectangular - 13¼" x 6½"
 25" Rectangular - 18¼" x 6½"
 30" Rectangular - 23¼" x 6½"
 20" Square - 13¼" x 16½"
 25" Square - 18¼" x 21½"
 30" Square - 23¼" x 26½"



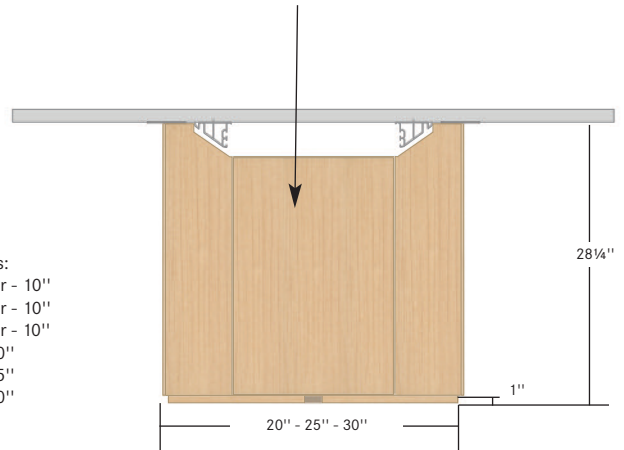
Rectangular Encore Base Square Encore Base

Removable Veneer Panel





End View

End Dimensions:
 20" Rectangular - 10"
 25" Rectangular - 10"
 30" Rectangular - 10"
 20" Square - 20"
 25" Square - 25"
 30" Square - 30"

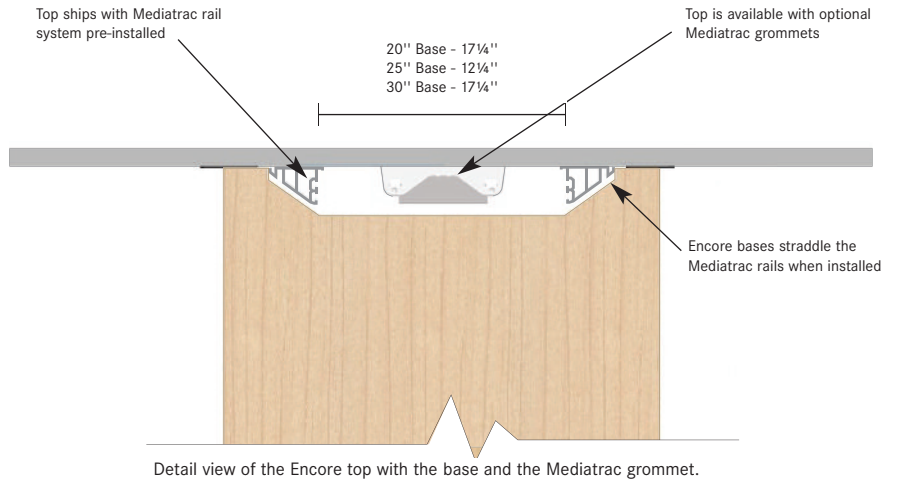
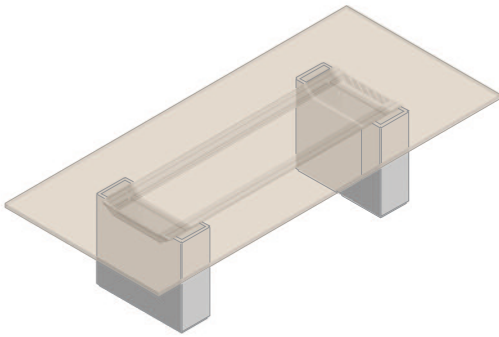


Dimensional Side View

description	sku	w	d	h	specifications	price
 <p>encore rectangular base</p> <p>approved for GSA Contract GS-28F-7040G</p>	LRS	20	10	28¼	laminate	
	LRM	25	10	28¼	laminate	
	LRL	30	10	28¼	laminate	
	ERS	20	10	28¼	veneer	
	ERM	25	10	28¼	veneer	
	ERL	30	10	28¼	veneer	
 <p>encore square base</p> <p>approved for GSA Contract GS-28F-7040G</p>	LSS	20	20	28¼	laminate	
	LSM	25	25	28¼	laminate	
	LSL	30	30	28¼	laminate	
	ESS	20	20	28¼	veneer	
	ESM	25	25	28¼	veneer	
	ESL	30	30	28¼	veneer	

specification codes	series	sku	veneer	style	base	finish
	[H] encore		laminate [F] plain/abstract laminate [W] woodgrain laminate veneer [J] cherry [E] maple [C] oak [9] walnut [Q] anigre [G] paldao	[X] none	[X] none	see appendix
	[H]			[X]	[X]	

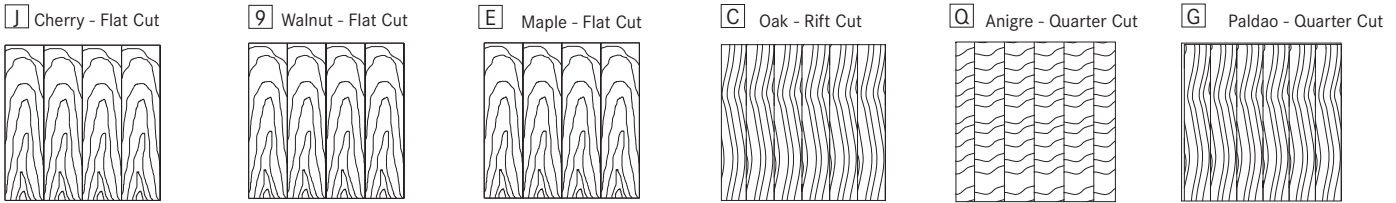
Encore Tops



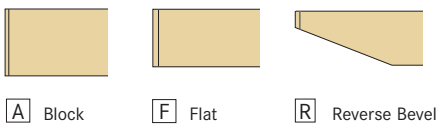
Encore tops are specifically constructed to accommodate the Encore bases. Tops and bases are specified and sold separately. See the specific top size desired for the appropriate number of bases required.

Depending on the width of the top specified, the Mediatrac rail placement will either have 12 1/4" or 17 1/4" inside clearance. The recommended base sizes must be specified to ensure a proper alignment and fit.

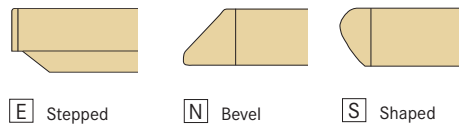
Veneer



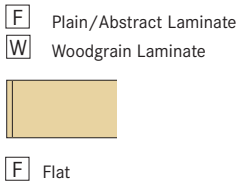
Edge Group A



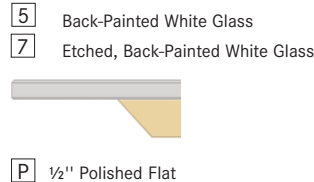
Edge Group B



Laminates



Glass

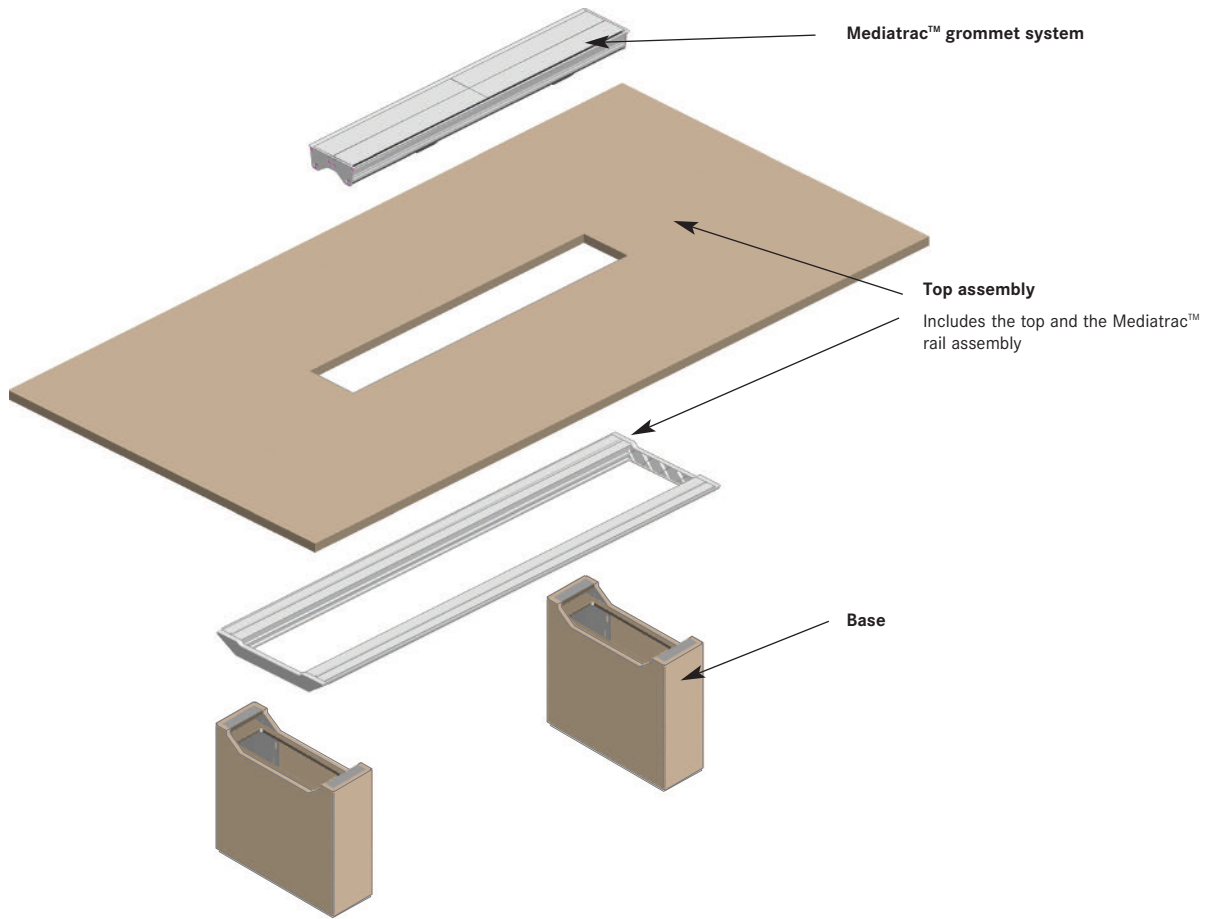


Solid Surfaces

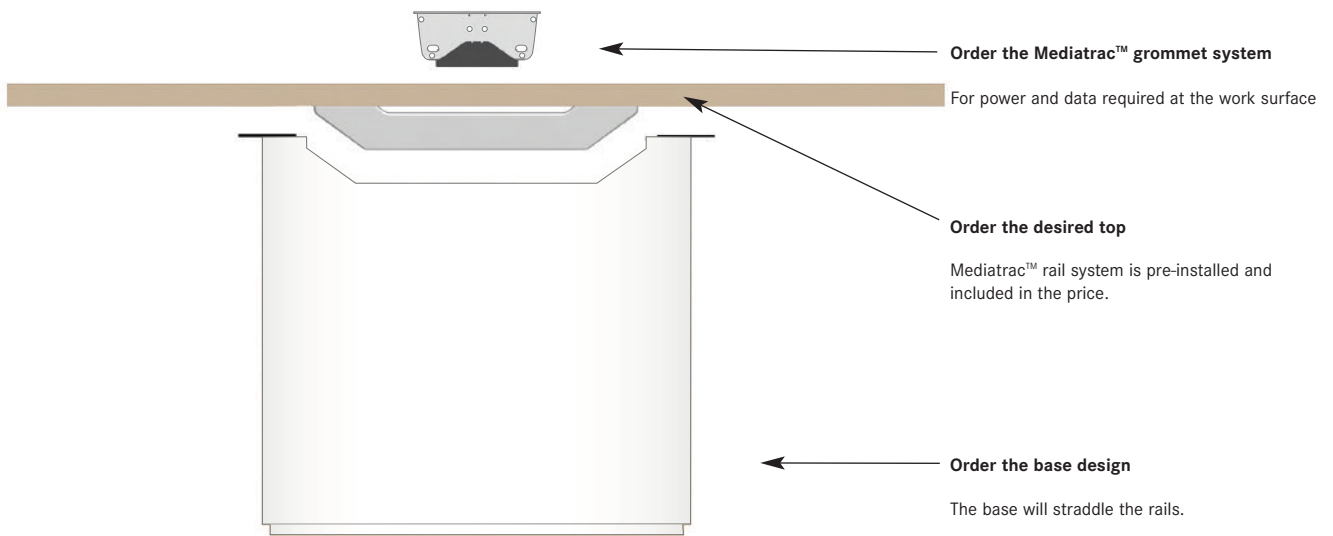


specification codes	series	sku	veneer	edge laminate	base	finish	grommet placement
	Q top		F plain/abstract laminate W woodgrain laminate J cherry E maple C oak 9 walnut G paldao 5 back-painted glass 7 etched, back-painted glass 8 solid surface, corian	F 1 1/4" flat group A A 1 1/4" block F 1 1/4" flat R 1 1/4" reverse bevel group B E 1 7/8" stepped N 1 1/4" bevel S 1 1/4" shaped glass P 1/2" polished flat corian F 1 1/4" flat R 1 1/4" reverse bevel	W encore base	see appendix	see mediatrac™
	Q				W		

Encore Concept and Assembly Overview



Exploded view of the construction concept.



Exploded side view of table ordering process.

Encore Base Location



Top Overhang Summary for End Conditions

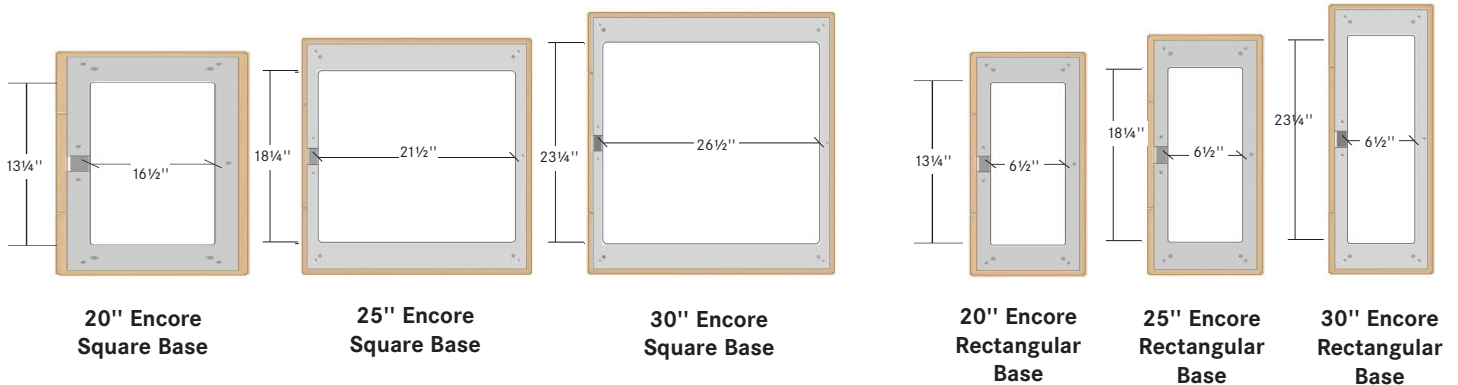
Top Edge to the Center of Base

Top Length	Top Overhang	20"/25"/30" Rect.	20" Square	25" Square	30" Square
72"	18 3/4"	23 3/4"	28 3/4"	31 1/4"	33 3/4"
78"	18 3/4"	23 3/4"	28 3/4"	31 1/4"	33 3/4"
84"	18 3/4"	23 3/4"	28 3/4"	31 1/4"	33 3/4"
90"	19 3/4"	24 3/4"	29 3/4"	32 1/4"	34 3/4"
96"	19 3/4"	24 3/4"	29 3/4"	32 1/4"	34 3/4"
102"	19 3/4"	24 3/4"	29 3/4"	32 1/4"	34 3/4"
108"	20 3/4"	25 3/4"	30 3/4"	33 1/4"	35 3/4"
114"	20 3/4"	25 3/4"	30 3/4"	33 1/4"	35 3/4"
120"	20 3/4"	25 3/4"	30 3/4"	33 1/4"	35 3/4"
132"	21 3/4"	26 3/4"	31 3/4"	34 1/4"	36 3/4"
144"	21 3/4"	26 3/4"	31 3/4"	34 1/4"	36 3/4"
156"	22 3/4"	27 3/4"	32 3/4"	35 1/4"	37 3/4"
168"	22 3/4"	27 3/4"	32 3/4"	35 1/4"	37 3/4"
180"	22 3/4"	27 3/4"	32 3/4"	35 1/4"	37 3/4"
192"	22 3/4"	27 3/4"	32 3/4"	35 1/4"	37 3/4"
204"	24"	29"	34"	36 1/2"	39"
216"	24"	29"	34"	36 1/2"	39"
228"	25"	30"	35"	37 1/2"	40"
240"	25"	30"	35"	37 1/2"	40"

Top Overhang Summary for Side Conditions

Base Width	Top Width	Top Overhang
20"	36"	8"
20"	46"	11"
25"	48"	11 1/2"
25"	54"	14 1/2"
30"	60"	15"
30"	66"	18"
30"	72"	21"

Encore Clear Opening Base Dimensions



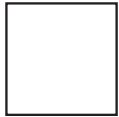


tops sold separately
order bases separately

laminates	cherry	maple	oak	walnut	paldao	glass	corian™					

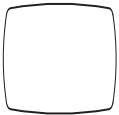
sku	l	w	specifications	plain abstract	woodgrain	edge group A	edge group B	edge group A	edge group B	back-painted	etched back-painted		
-----	---	---	----------------	----------------	-----------	--------------	--------------	--------------	--------------	--------------	---------------------	--	--

square top



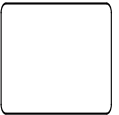
ADD	54	54	(1) 25" square base
AEE	60	60	(1) 25" square base

arched square top



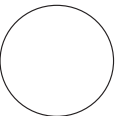
BDD	54	54	(1) 25" square base
BEE	60	60	(1) 25" square base

radius square top



CDD	54	54	(1) 25" square base
CEE	60	60	(1) 25" square base

round top



DDD	54	54	(1) 25" square base
DEE	60	60	(1) 25" square base

specification codes	series	sku	veneers	edges	bases	finishes	grommet placement
	Q top		F plain/abstract laminate W woodgrain laminate J cherry E maple C oak 9 walnut G paldao 5 back-painted glass 7 etched, back-painted glass 8 solid surface, corian	laminates F 1/4" flat group A A 1/4" block F 1/4" flat R 1/4" reverse bevel group B E 1/8" stepped N 1/4" bevel S 1/4" shaped glass P 1/2" polished flat corian F 1/4" flat R 1/4" reverse bevel	W encore base	see appendix	see mediatrac™
	Q				W		



tops sold separately, order bases separately
 top 66" - 72" width x 132" - 240" length
 have 4 sectional veneer matched tops

sku	l	w	specifications	laminate		cherry maple oak walnut		paldao		glass		corian™	
				plain abstract	woodgrain	edge group A	edge group B	edge group A	edge group B	back-painted	etched back-painted		
EEB	60	42	(2) 20" rectangular bases										
EEC	60	48	(2) 25" rectangular bases										
EFA	66	36	(2) 20" rectangular bases										
EFB	66	42	(2) 20" rectangular bases										
EFC	66	48	(2) 25" rectangular bases										
EGB	72	42	(2) 20" rectangular bases										
EGC	72	48	(2) 25" rectangular bases										
EHB	78	42	(2) 20" rectangular bases										
EHC	78	48	(2) 25" rectangular bases										
EIB	84	42	(2) 20" rectangular bases										
EIC	84	48	(2) 25" rectangular bases										
EJB	90	42	(2) 20" rect.; (2) 20" sq. bases										
EJC	90	48	(2) 25" rectangular bases										
EJD	90	54	(2) 25" rectangular bases										
EKB	96	42	(2) 20" rect.; (2) 20" sq. bases										
EKC	96	48	(2) 25" rectangular bases										
EKD	96	54	(2) 25" rectangular bases										
EKE	96	60	(2) 30" rectangular bases										
ELB	102	42	(2) 20" rect.; (2) 20" sq. bases										
ELC	102	48	(2) 25" rectangular bases										
ELD	102	54	(2) 25" rectangular bases										
ELE	102	60	(2) 30" rectangular bases										
EMB	108	42	(2) 20" rect.; (2) 20" sq. bases										
EMC	108	48	(2) 25" rectangular bases										
EMD	108	54	(2) 25" rectangular bases										
EME	108	60	(2) 30" rectangular bases										

specification codes

series

sku

veneer

edge

base

finish

grommet placement

Q top

Q

F plain/abstract laminate
 W woodgrain laminate
 J cherry
 E maple
 C oak
 Q walnut
 G paldao
 5 back-painted glass
 7 etched, back-painted glass
 8 solid surface, corian

laminate
 F 1 1/4" flat
group A
 A 1 3/4" block
 F 1 1/4" flat
 R 1 1/4" reverse bevel
group B
 E 1 7/8" stepped
 N 1 1/4" bevel
 S 1 1/4" shaped
glass
 P 1/2" polished flat
corian
 F 1 1/4" flat
 R 1 1/4" reverse bevel

W encore base

W

see appendix

see mediatrac™



tops sold separately, order bases separately
 top 66" - 72" width x 132" - 240" length
 have 4 sectional veneer matched tops

sku	l	w	specifications	laminate		cherry maple oak walnut		paldao		glass		corian™	
				plain abstract	woodgrain	edge group A	edge group B	edge group A	edge group B	back-painted	etched back-painted		
ENB	114	42	(2) 20" rect.; (2) 20" sq. bases										
ENC	114	48	(2) 25" rectangular bases										
END	114	54	(2) 25" rectangular bases										
ENE	114	60	(2) 30" rectangular bases										
EOB	120	42	(2) 20" rect.; (2) 20" sq. bases										
EOC	120	48	(2) 25" rectangular bases										
EOD	120	54	(2) 25" rectangular bases										
EOE	120	60	(2) 30" rectangular bases										
EQC	132	48	(3) 25" rectangular bases										
EQD	132	54	(3) 25" rectangular bases										
EQE	132	60	(3) 30" rectangular bases										
EQF	132	66	(3) 30" rectangular bases										
EQG	132	72	(3) 30" rectangular bases										
ESD	144	54	(3) 25" rect. or (2) 25" sq. bases										
ESE	144	60	(3) 30" rect. or (2) 30" sq. bases										
ESF	144	66	(3) 30" rect. or (2) 30" sq. bases										
ESG	144	72	(3) 30" rect. or (2) 30" sq. bases										
EUD	156	54	(3) 25" rect. or (2) 25" sq. bases										
EUE	156	60	(3) 30" rect. or (2) 30" sq. bases										
EUF	156	66	(3) 30" rect. or (2) 30" sq. bases										
EUG	156	72	(3) 30" rect. or (2) 30" sq. bases										
EWD	168	54	(3) 25" rect. or (2) 25" sq. bases										
EWE	168	60	(3) 30" rect. or (2) 30" sq. bases										
EWF	168	66	(3) 30" rect. or (2) 30" sq. bases										
EWG	168	72	(3) 30" rect. or (2) 30" sq. bases										

specification codes	series	sku	veneer	edge	base	finish	grommet placement
			 	laminate group A group B glass corian 		see appendix	see mediatrac™



tops sold separately, order bases separately
 top 66" - 72" width x 132" - 240" length
 have 4 sectional veneer matched tops

sku	l	w	specifications	laminate		cherry maple oak walnut		paldao		glass		corian™	
				plain abstract	woodgrain	edge group A	edge group B	edge group A	edge group B	back-painted	etched back-painted		
EYD	180	54	3) 25" rect. or (2) 25" sq. bases										
EYE	180	60	3) 30" rect. or (2) 30" sq. bases										
EYF	180	66	3) 30" rect. or (2) 30" sq. bases										
EYG	180	72	3) 30" rect. or (2) 30" sq. bases										
E1D	192	54	3) 25" rect. or (2) 25" sq. bases										
E1E	192	60	3) 30" rect. or (3) 30" sq. bases										
E1F	192	66	3) 30" rect. or (3) 30" sq. bases										
E1G	192	72	3) 30" rect. or (3) 30" sq. bases										
E3D	204	54	3) 25" rect. or (2) 25" sq. bases										
E3E	204	60	3) 30" rect. or (3) 30" sq. bases										
E3F	204	66	3) 30" rect. or (3) 30" sq. bases										
E3G	204	72	3) 30" rect. or (3) 30" sq. bases										
E5D	216	54	3) 25" rect. or (2) 25" sq. bases										
E5E	216	60	3) 30" rect. or (3) 30" sq. bases										
E5F	216	66	3) 30" rect. or (3) 30" sq. bases										
E5G	216	72	3) 30" rect. or (3) 30" sq. bases										
E7D	228	54	4) 25" rect. or (3) 25" sq. bases										
E7E	228	60	4) 30" rect. or (3) 30" sq. bases										
E7F	228	66	4) 30" rect. or (3) 30" sq. bases										
E7G	228	72	4) 30" rect. or (3) 30" sq. bases										
E9D	240	54	4) 25" rect. or (3) 25" sq. bases										
E9E	240	60	4) 30" rect. or (3) 30" sq. bases										
E9F	240	66	4) 30" rect. or (3) 30" sq. bases										
E9G	240	72	4) 30" rect. or (3) 30" sq. bases										

specification codes	series	sku	veneer	edge	base	finish	grommet placement
	top		plain/abstract laminate woodgrain laminate cherry maple oak walnut paldao back-painted glass etched, back-painted glass solid surface, corian	laminate 1 1/4" flat group A 1 3/4" block 1 1/4" flat 1 1/4" reverse bevel group B 1 7/8" stepped 1 1/4" bevel 1 1/4" shaped glass 1/2" polished flat corian 1 1/4" flat 1 1/4" reverse bevel	encore base	see appendix	see mediatrac™



tops sold separately, order bases separately
 top 66" - 72" width x 132" - 240" length
 have 4 sectional veneer matched tops

laminate	cherry maple oak walnut		paldao		glass	corian™	

sku	l	w	specifications	plain abstract	woodgrain	edge group A	edge group B	edge group A	edge group B	back-painted	etched back-painted		
-----	---	---	----------------	-------------------	-----------	-----------------	-----------------	-----------------	-----------------	--------------	------------------------	--	--



FEB	60	42	(2) 25" rectangular bases										
FEC	60	48	(2) 25" rectangular bases										
FFA	66	36	(2) 20" rectangular bases										
FFB	66	42	(2) 20" rectangular bases										
FFC	66	48	(2) 25" rectangular bases										
FGB	72	42	(2) 20" rectangular bases										
FGC	72	48	(2) 25" rectangular bases										
FHB	78	42	(2) 20" rectangular bases										
FHC	78	48	(2) 25" rectangular bases										
FIB	84	42	(2) 20" rectangular bases										
FIC	84	48	(2) 25" rectangular bases										
FJB	90	42	(2) 20" rectangular bases										
FJC	90	48	(2) 25" rectangular bases										
FJD	90	54	(2) 25" rectangular bases										
FKB	96	42	(2) 20" rect.; (2) 20" sq. bases										
FKC	96	48	(2) 25" rectangular bases										
FKD	96	54	(2) 25" rectangular bases										
FKE	96	60	(2) 30" rectangular bases										
FLB	102	42	(2) 20" rect.; (2) 20" sq. bases										
FLC	102	48	(2) 25" rectangular bases										
FLD	102	54	(2) 25" rectangular bases										
FLE	102	60	(2) 30" rectangular bases										
FMB	108	42	(2) 20" rect.; (2) 20" sq. bases										
FMC	108	48	(2) 25" rectangular bases										
FMD	108	54	(2) 25" rectangular bases										
FME	108	60	(2) 30" rectangular bases										

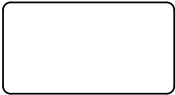
specification codes	series	sku	veneer	edge laminate	base	finish	grommet placement
	Q top		F plain/abstract laminate W woodgrain laminate J cherry E maple C oak 9 walnut G paldao 5 back-painted glass 7 etched, back-painted glass 8 solid surface, corian	F 1 1/4" flat group A A 1 3/4" block F 1 1/4" flat R 1 1/4" reverse bevel group B E 1 7/8" stepped N 1 1/4" bevel S 1 1/4" shaped glass P 1/2" polished flat corian F 1 1/4" flat R 1 1/4" reverse bevel	W encore base	see appendix	see mediatrac™
	Q				W		



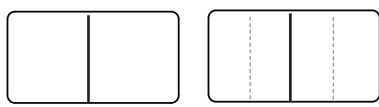
tops sold separately, order bases separately
 top 66" - 72" width x 132" - 240" length
 have 4 sectional veneer matched tops

laminate	cherry maple oak walnut		paldao		glass	corian™	
	A	E	A	E		F	R
F	F	N	F	N	P	F	R
	R	S	R	S			
plain abstract	woodgrain	edge group A	edge group B	edge group A	edge group B	back-painted	etched back-painted

sku | w specifications



FNB	114	42	(2) 20" rect.; (2) 20" sq. bases
FNC	114	48	(2) 25" rectangular bases
FND	114	54	(2) 25" rectangular bases
FNE	114	60	(2) 30" rectangular bases
FOB	120	42	(2) 20" rect.; (2) 20" sq. bases
FOC	120	48	(2) 25" rectangular bases
FOD	120	54	(2) 25" rectangular bases
FOE	120	60	(2) 30" rectangular bases



FQC	132	48	(3) 25" rectangular bases
FQD	132	54	(3) 25" rectangular bases
FQE	132	60	(3) 30" rectangular bases
FQF	132	66	(3) 30" rectangular bases
FQG	132	72	(3) 30" rectangular bases
FSD	144	54	(3) 25" rect. or (2) 25" sq. bases
FSE	144	60	(3) 30" rect. or (2) 30" sq. bases
FSF	144	66	(3) 30" rect. or (2) 30" sq. bases
FSG	144	72	(3) 30" rect. or (2) 30" sq. bases
FUD	156	54	(3) 25" rect. or (2) 25" sq. bases
FUE	156	60	(3) 30" rect. or (2) 30" sq. bases
FUF	156	66	(3) 30" rect. or (2) 30" sq. bases
FUG	156	72	(3) 30" rect. or (2) 30" sq. bases
FWD	168	54	(3) 25" rect. or (2) 25" sq. bases
FWE	168	60	(3) 30" rect. or (2) 30" sq. bases
FWF	168	66	(3) 30" rect. or (2) 30" sq. bases
FWG	168	72	(3) 30" rect. or (2) 30" sq. bases

specification codes	series	sku	veneer	edge	base	finish	grommet placement
	Q top		F plain/abstract laminate W woodgrain laminate J cherry E maple C oak Q walnut G paldao 5 back-painted glass 7 etched, back-painted glass 8 solid surface, corian	laminate F 1 1/4" flat group A A 1 3/4" block F 1 1/4" flat R 1 1/4" reverse bevel group B E 1 7/8" stepped N 1 1/4" bevel S 1 1/4" shaped glass P 1/2" polished flat corian F 1 1/4" flat R 1 1/4" reverse bevel	W encore base	see appendix	see mediatrac™
	Q				W		



tops sold separately, order bases separately
top 66" - 72" width x 132" - 240" length
have 4 sectional veneer matched tops

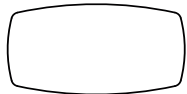
sku	l	w	specifications	laminate		cherry maple oak walnut		paldao		glass		corian™	
				plain abstract	woodgrain	edge group A	edge group B	edge group A	edge group B	back-painted	etched back-painted		
FYD	180	54	(3) 25" rect. or (2) 25" sq. bases										
FYE	180	60	(3) 30" rect. or (2) 30" sq. bases										
FYF	180	66	(3) 30" rect. or (2) 30" sq. bases										
FYG	180	72	(3) 30" rect. or (2) 30" sq. bases										
F1D	192	54	(3) 25" rect. or (2) 25" sq. bases										
F1E	192	60	(3) 30" rect. or (2) 30" sq. bases										
F1F	192	66	(3) 30" rect. or (2) 30" sq. bases										
F1G	192	72	(3) 30" rect. or (2) 30" sq. bases										
F3D	204	54	(3) 25" rect. or (2) 25" sq. bases										
F3E	204	60	(3) 30" rect. or (2) 30" sq. bases										
F3F	204	66	(3) 30" rect. or (2) 30" sq. bases										
F3G	204	72	(3) 30" rect. or (2) 30" sq. bases										
F5D	216	54	(3) 25" rect. or (2) 25" sq. bases										
F5E	216	60	(3) 30" rect. or (2) 30" sq. bases										
F5F	216	66	(3) 30" rect. or (2) 30" sq. bases										
F5G	216	72	(3) 30" rect. or (2) 30" sq. bases										
F7D	228	54	(4) 25" rect. or (3) 25" sq. bases										
F7E	228	60	(4) 30" rect. or (3) 30" sq. bases										
F7F	228	66	(4) 30" rect. or (3) 30" sq. bases										
F7G	228	72	(4) 30" rect. or (3) 30" sq. bases										
F9D	240	54	(4) 25" rect. or (3) 25" sq. bases										
F9E	240	60	(4) 30" rect. or (3) 30" sq. bases										
F9F	240	66	(4) 30" rect. or (3) 30" sq. bases										
F9G	240	72	(4) 30" rect. or (3) 30" sq. bases										

specification codes	series	sku	veneer	edge	base	finish	grommet placement
			 	laminate group A group B glass corian 		see appendix	see mediatrac™



tops sold separately, order bases separately
 top 66" - 72" width x 132" - 240" length
 have 4 sectional veneer matched tops

sku	l	w	specifications	laminate		cherry maple oak walnut		paldao		glass		corian™	
				plain abstract	woodgrain	edge group A	edge group B	edge group A	edge group B	back-painted	etched back-painted		
GGB	72	42/36	(2) 20" rectangular bases										
GGC	72	48/42	(2) 25" rectangular bases										
GHB	78	42/36	(2) 20" rectangular bases										
GHC	78	48/42	(2) 25" rectangular bases										
GIB	84	42/36	(2) 20" rectangular bases										
GIC	84	48/42	(2) 25" rectangular bases										
GJB	90	42/36	(2) 20" rect.; (2) 20" sq. bases										
GJC	90	48/42	(2) 25" rectangular bases										
GJD	90	54/48	(2) 25" rectangular bases										
GKB	96	42/36	(2) 20" rect.; (2) 20" sq. bases										
GKC	96	48/42	(2) 25" rectangular bases										
GKD	96	54/48	(2) 25" rectangular bases										
GKE	96	60/54	(2) 30" rectangular bases										
GLB	102	42/36	(2) 20" rect.; (2) 20" sq. bases										
GLC	102	48/42	(2) 25" rectangular bases										
GLD	102	54/48	(2) 25" rectangular bases										
GLE	102	60/54	(2) 30" rectangular bases										
GMB	108	42/36	(2) 20" rect.; (2) 20" sq. bases										
GMC	108	48/42	(2) 25" rectangular bases										
GMD	108	54/48	(2) 25" rectangular bases										
GME	108	60/54	(2) 30" rectangular bases										
GNB	114	42/36	(2) 20" rect.; (2) 20" sq. bases										
GNC	114	48/42	(2) 25" rectangular bases										
GND	114	54/48	(2) 25" rectangular bases										
GNE	114	60/54	(2) 30" rectangular bases										



- GGB 72 42/36 (2) 20" rectangular bases
- GGC 72 48/42 (2) 25" rectangular bases
- GHB 78 42/36 (2) 20" rectangular bases
- GHC 78 48/42 (2) 25" rectangular bases
- GIB 84 42/36 (2) 20" rectangular bases
- GIC 84 48/42 (2) 25" rectangular bases
- GJB 90 42/36 (2) 20" rect.; (2) 20" sq. bases
- GJC 90 48/42 (2) 25" rectangular bases
- GJD 90 54/48 (2) 25" rectangular bases
- GKB 96 42/36 (2) 20" rect.; (2) 20" sq. bases
- GKC 96 48/42 (2) 25" rectangular bases
- GKD 96 54/48 (2) 25" rectangular bases
- GKE 96 60/54 (2) 30" rectangular bases
- GLB 102 42/36 (2) 20" rect.; (2) 20" sq. bases
- GLC 102 48/42 (2) 25" rectangular bases
- GLD 102 54/48 (2) 25" rectangular bases
- GLE 102 60/54 (2) 30" rectangular bases
- GMB 108 42/36 (2) 20" rect.; (2) 20" sq. bases
- GMC 108 48/42 (2) 25" rectangular bases
- GMD 108 54/48 (2) 25" rectangular bases
- GME 108 60/54 (2) 30" rectangular bases
- GNB 114 42/36 (2) 20" rect.; (2) 20" sq. bases
- GNC 114 48/42 (2) 25" rectangular bases
- GND 114 54/48 (2) 25" rectangular bases
- GNE 114 60/54 (2) 30" rectangular bases

specification codes

series

sku

veneer

edge

base

finish

grommet placement

Q top

Q

F plain/abstract laminate

W woodgrain laminate

J cherry

E maple

C oak

9 walnut

G paldao

5 back-painted glass

7 etched, back-painted glass

8 solid surface, corian

laminate

F 1 1/4" flat

group A

A 1 3/4" block

F 1 1/4" flat

R 1 1/4" reverse bevel

group B

E 1 7/8" stepped

N 1 1/4" bevel

S 1 1/4" shaped

glass

P 1/2" polished flat

corian

F 1 1/4" flat

R 1 1/4" reverse bevel

W encore base

W

see appendix

see mediatrac™



tops sold separately, order bases separately
top 66" - 72" width x 132" - 240" length
have 4 sectional veneer matched tops

	laminate		cherry maple oak walnut		paldao		glass		corian™	
sku w specifications	plain abstract	woodgrain	edge group A	edge group B	edge group A	edge group B	back-painted	etched back-painted		
GOB 120 42/36 (2) 20" rect. or (2) 20" sq. bases										
GOC 120 48/42 (2) 25" rectangular bases										
GOD 120 54/48 (2) 25" rectangular bases										
GOE 120 60/54 (2) 30" rectangular bases										
GOF 120 66/60 (2) 30" rectangular bases										
GOG 120 72/66 (2) 30" rectangular bases										
GQC 132 48/36 (3) 25" rectangular bases										
GQD 132 54/42 (3) 25" rectangular bases										
GQE 132 60/48 (2) 25", (1) 30" rect. bases										
GQF 132 66/54 (2) 25", (1) 30" rect. bases										
GSD 144 54/42 (3) 25" rect. or (2) 25" sq. bases										
GSE 144 60/48 (2) 25", (1) 30" rect. or (2) 30" sq. bases										
GSF 144 66/54 (2) 25", (1) 30" rect. or (2) 30" sq. bases										
GUD 156 54/42 (3) 25" rect. or (2) 25" sq. bases										
GUE 156 60/48 (2) 25", (1) 30" rect. or (2) 30" sq. bases										
GUF 156 66/54 (2) 25", (1) 30" rect. or (2) 30" sq. bases										
GWD 168 54/42 (3) 25" rect. or (2) 25" sq. bases										
GWE 168 60/48 (2) 25", (1) 30" rect. or (2) 30" sq. bases										
GWF 168 66/54 (2) 25", (1) 30" rect. or (2) 30" sq. bases										
GYD 180 54/42 (3) 25" rect. or (2) 25" sq. bases										
GYE 180 60/48 (2) 25", (1) 30" rect. or (2) 30" sq. bases										
GYF 180 66/54 (2) 25", (1) 30" rect. or (2) 30" sq. bases										

specification codes

series

sku

veneer

edge

base

finish

grommet placement

Q top

Q

F plain/abstract laminate
W woodgrain laminate
J cherry
E maple
C oak
Q walnut
G paldao
5 back-painted glass
7 etched, back-painted glass
8 solid surface, corian

laminate
F 1/4" flat
group A
A 1/4" block
F 1/4" flat
R 1/4" reverse bevel
group B
E 1/8" stepped
N 1/4" bevel
S 1/4" shaped
glass
P 1/2" polished flat
corian
F 1/4" flat
R 1/4" reverse bevel

W encore base

W

see appendix

see mediatrac™



tops sold separately, order bases separately
 top 66" - 72" width x 132" - 240" length
 have 4 sectional veneer matched tops

sku	l	w	specifications		laminate		cherry maple oak walnut		paldao		glass		corian™	
			plain abstract	woodgrain	edge group A	edge group B	edge group A	edge group B	back-painted	etched back-painted				
G1D	192	54/42	(3) 25" rect. or (3) 25" sq. bases											
G1E	192	60/48	(2) 25", (1) 30" rect. or (3) 30" sq. bases											
G1F	192	66/54	(2) 25", (1) 30" rect. or (3) 30" sq. bases											
G3D	204	54/42	(3) 25" rect. or (3) 25" sq. bases											
G3E	204	60/48	(2) 25", (1) 30" rect. or (3) 30" sq. bases											
G3F	204	66/54	(2) 25", (1) 30" rect. or (3) 30" sq. bases											
G5D	216	54/42	(3) 25" rect. or (3) 25" sq. bases											
G5E	216	60/48	(2) 25", (1) 30" rect. or (3) 30" sq. bases											
G5F	216	66/54	(2) 25", (1) 30" rect. or (3) 30" sq. bases											
G7D	228	54/42	(2) 25", (2) 30" rect. or (3) 30" sq. bases											
G7E	228	60/48	(2) 25", (2) 30" rect. or (3) sq. bases											
G7F	228	66/54	(2) 25", (2) 30" rect. or (3) sq. bases											
G9D	240	54/42	(2) 25", (2) 30" rect. or (3) 30" sq. bases											
G9E	240	60/48	(2) 25", (2) 30" rect. or (3) sq. bases											
G9F	240	66/54	((2) 25", (2) 30" rect. or (3) sq. bases											



- G1D 192 54/42 (3) 25" rect. or (3) 25" sq. bases
- G1E 192 60/48 (2) 25", (1) 30" rect. or (3) 30" sq. bases
- G1F 192 66/54 (2) 25", (1) 30" rect. or (3) 30" sq. bases

- G3D 204 54/42 (3) 25" rect. or (3) 25" sq. bases
- G3E 204 60/48 (2) 25", (1) 30" rect. or (3) 30" sq. bases
- G3F 204 66/54 (2) 25", (1) 30" rect. or (3) 30" sq. bases

- G5D 216 54/42 (3) 25" rect. or (3) 25" sq. bases
- G5E 216 60/48 (2) 25", (1) 30" rect. or (3) 30" sq. bases
- G5F 216 66/54 (2) 25", (1) 30" rect. or (3) 30" sq. bases

- G7D 228 54/42 (2) 25", (2) 30" rect. or (3) 30" sq. bases
- G7E 228 60/48 (2) 25", (2) 30" rect. or (3) sq. bases
- G7F 228 66/54 (2) 25", (2) 30" rect. or (3) sq. bases

- G9D 240 54/42 (2) 25", (2) 30" rect. or (3) 30" sq. bases
- G9E 240 60/48 (2) 25", (2) 30" rect. or (3) sq. bases
- G9F 240 66/54 ((2) 25", (2) 30" rect. or (3) sq. bases

specification codes

series

sku

veneer

edge

base

finish

grommet placement

Q top

Q

F plain/abstract laminate
 W woodgrain laminate
 J cherry
 E maple
 C oak
 Q walnut
 G paldao
 S back-painted glass
 7 etched, back-painted glass
 8 solid surface, corian

laminate
 F 1 1/4" flat
group A
 A 1 3/4" block
 F 1 1/4" flat
 R 1 1/4" reverse bevel
group B
 E 1 7/8" stepped
 N 1 1/4" bevel
 S 1 1/4" shaped
glass
 P 1/2" polished flat
corian
 F 1 1/4" flat
 R 1 1/4" reverse bevel

W encore base

W

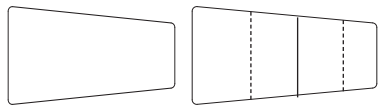
see appendix

see mediatrac™



tops sold separately, order bases separately
 top 66" - 72" width x 132" - 240" length
 have 4 sectional veneer matched tops

sku	l	w	specifications	laminate		cherry maple oak walnut		paldao		glass		corian™	
				plain abstract	woodgrain	edge group A	edge group B	edge group A	edge group B	back-painted	etched back-painted		
IKD	96	54/36	(1) 25", (1) 30" rect. bases										
IKE	96	60/42	(1) 25", (1) 30" rect. base										
ILD	102	54/36	(1) 25", (1) 30" rect. base										
ILE	102	60/42	(1) 25", (1) 30" rect. base										
IMD	108	54/36	(1) 25", (1) 30" rect. base										
IME	108	60/42	(1) 25", (1) 30" rect. base										
IOD	120	54/36	(1) 25", (1) 30" rect. base										
IOE	120	60/42	(1) 25", (1) 30" rect. base										
IQD	132	54/36	(2) 25", (1) 30" rect. base										
IQE	132	60/42	(2) 25", (1) 30" rect. base										
IQF	132	66/48	(1) 25", (2) 30" rect. bases										
ISE	144	60/42	(2) 25", (1) 30" rect. base										
ISF	144	66/48	(1) 25", (2) 30" rect. bases										
IUE	156	60/42	(2) 25", (1) 30" rect. base										
IUF	156	66/48	(1) 25", (2) 30" rect. bases										
IWE	168	60/42	(2) 25", (1) 30" rect. base										
IWF	168	66/48	(1) 25", (2) 30" rect. bases										
IYE	180	60/42	(2) 25", (1) 30" rect. base										
IYF	180	66/48	(1) 25", (2) 30" rect. bases										
I1E	192	60/42	(2) 25", (1) 30" rect. base										
I1F	192	66/48	(1) 25", (2) 30" rect. bases										
I3F	204	66/48	(1) 25", (2) 30" rect. bases										



IKD 96 54/36 (1) 25", (1) 30" rect. bases
 IKE 96 60/42 (1) 25", (1) 30" rect. base

ILD 102 54/36 (1) 25", (1) 30" rect. base
 ILE 102 60/42 (1) 25", (1) 30" rect. base

IMD 108 54/36 (1) 25", (1) 30" rect. base
 IME 108 60/42 (1) 25", (1) 30" rect. base

IOD 120 54/36 (1) 25", (1) 30" rect. base
 IOE 120 60/42 (1) 25", (1) 30" rect. base

IQD 132 54/36 (2) 25", (1) 30" rect. base
 IQE 132 60/42 (2) 25", (1) 30" rect. base
 IQF 132 66/48 (1) 25", (2) 30" rect. bases

ISE 144 60/42 (2) 25", (1) 30" rect. base
 ISF 144 66/48 (1) 25", (2) 30" rect. bases

IUE 156 60/42 (2) 25", (1) 30" rect. base
 IUF 156 66/48 (1) 25", (2) 30" rect. bases

IWE 168 60/42 (2) 25", (1) 30" rect. base
 IWF 168 66/48 (1) 25", (2) 30" rect. bases

IYE 180 60/42 (2) 25", (1) 30" rect. base
 IYF 180 66/48 (1) 25", (2) 30" rect. bases

I1E 192 60/42 (2) 25", (1) 30" rect. base
 I1F 192 66/48 (1) 25", (2) 30" rect. bases

I3F 204 66/48 (1) 25", (2) 30" rect. bases

specification codes

series

sku

veneer

edge

base

finish

grommet placement

Q top

Q

F plain/abstract laminate
 W woodgrain laminate
 J cherry
 E maple
 C oak
 9 walnut
 G paldao
 5 back-painted glass
 7 etched, back-painted glass
 8 solid surface, corian

laminate
 F 1 1/4" flat
group A
 A 1 3/4" block
 F 1 1/4" flat
 R 1 1/4" reverse bevel
group B
 E 1 7/8" stepped
 N 1 1/4" bevel
 S 1 1/4" shaped
glass
 P 1/2" polished flat
corian
 F 1 1/4" flat
 R 1 1/4" reverse bevel

W encore base

W

see appendix

see mediatrac™

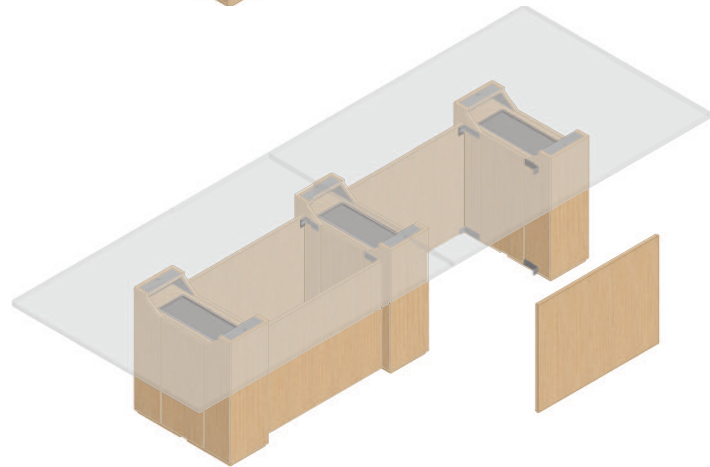
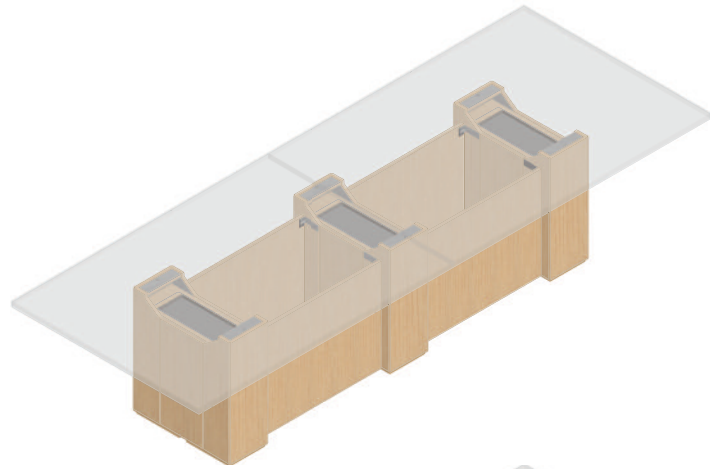
Encore Modesty Panel



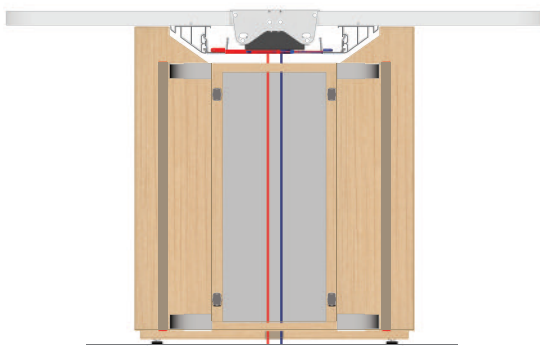
The Encore base offers a modesty panel that conceals any power in-feeds that occur between the bases.

The panels can be specified in veneer and laminate finishes as offered for the bases. Specify the appropriate panel sku for the size of base and length of top.

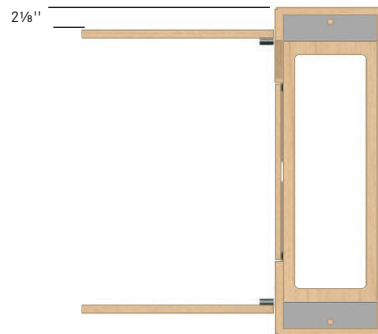
Mounting hardware is included and shipped with the panels for field installation.



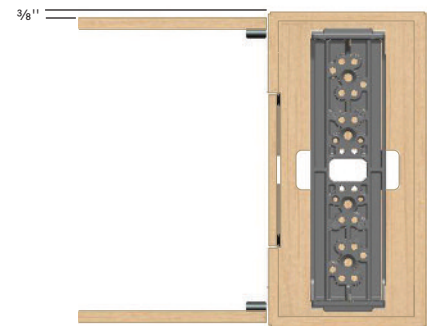
Side View Showing Wiring



Modesty Panel Inset
25" and 30" Wide Bases



Modesty Panel Inset
20" Wide Base



specification codes

series

sku

veneer

edge

base

finish

modesty panel

- plain/abstract laminate
- woodgrain laminate
- cherry
- maple
- oak
- walnut
- paldao

none

encore

see appendix

encore modesty panel



length of modesty panel is determined by length of top and base option
 veneer on both sides of panel, edge banded on edges
 installation hardware included
 Approved for GSA Contract GS-28F-7040G
 Level 1 Certified
 GREENGUARD Certified

sku	l	h	specifications	plain/abstract laminate	woodgrain laminate	cherry maple oak walnut	paldao
modesty panel for rectangular bases							
CMG	14¼	24	use with 72" top; includes 2 panels				
CMH	20¼	24	use with 78" top; includes 2 panels				
CMI	26¼	24	use with 84" top; includes 2 panels				
CMJ	30¼	24	use with 90" top; includes 2 panels				
CMK	36¼	24	use with 96" top; includes 2 panels				
CML	42¼	24	use with 102 top"; includes 2 panels				
CMM	46¼	24	use with 108 top"; includes 2 panels				
CMN	52¼	24	use with 114" top; includes 2 panels				
CMO	58¼	24	use with 120" top; includes 2 panels				
CMQ	29	24	use with 132" top; includes 4 panels				
CMS	35	24	use with 144" top; includes 4 panels				
CMU	40	24	use with 156" top; includes 4 panels				
CMW	46	24	use with 168" top; includes 4 panels				
CMY	52	24	use with 180" top; includes 4 panels				
CM1	58	24	use with 192" top; includes 4 panels				
CM3	62¾	24	use with 204" top; includes 4 panels				
CM5	68¾	24	use with 216" top; includes 4 panels				
CM7	45¾	24	use with 228" top; includes 6 panels				
CM9	49¾	24	use with 240" top; includes 6 panels				

specification codes	series	sku	veneer	edge	base	finish
Q	modesty panel		F plain/abstract laminate W woodgrain laminate J cherry E maple C oak 9 walnut G paldao	X none	W encore	see appendix
Q				X	W	

encore modesty panel



length of modesty panel is determined by length of top and base option
 veneer on both sides of panel, edge banded on edges
 installation hardware included
 Approved for GSA Contract GS-28F-7040G
 Level 1 Certified
 GREENGUARD Certified

sku	l	h	specifications	plain/abstract laminate	woodgrain laminate	cherry maple oak walnut	paldao
modesty panels for square bases							
20" square bases							
DMK	16¼	24	use with 96" top; includes 2 panels				
DML	22¼	24	use with 102" top; includes 2 panels				
DMM	26¼	24	use with 108" top; includes 2 panels				
DMN	32¼	24	use with 114" top; includes 2 panels				
DMO	38¼	24	use with 120" top; includes 2 panels				
25" square bases							
EMS	50¼	24	use with 144" top; includes 2 panels				
EMU	60¼	24	use with 156" top; includes 2 panels				
EMW	72¼	24	use with 168" top; includes 2 panels				
EMY	84¼	24	use with 180" top; includes 2 panels				
EM1	35½	24	use with 192" top; includes 4 panels				
EM3	40¼	24	use with 204" top; includes 4 panels				
EM5	46¼	24	use with 216" top; includes 4 panels				
EM7	51¼	24	use with 228" top; includes 4 panels				
EM9	57¼	24	use with 240" top; includes 4 panels				
30" square bases							
FMW	62¼	24	use with 168" top; includes 4 panels				
FMY	74¼	24	use with 180" top; includes 4 panels				
FM1	28	24	use with 192" top; includes 4 panels				
FM3	32¾	24	use with 204" top; includes 4 panels				
FM5	38¾	24	use with 216" top; includes 4 panels				
FM7	43¾	24	use with 228" top; includes 4 panels				
FM9	49¾	24	use with 240" top; includes 4 panels				

specification codes	series	sku	veneer	edge	base	finish
	Q modesty panel		E plain/abstract laminate W woodgrain laminate J cherry E maple C oak O walnut G paldao	X none	W encore	see appendix
	Q			X	W	

Mediatrac™



Mediatrac™ is a simplified system for routing power and data to the conference table worksurface while managing wires and auxiliary equipment.

The Mediatrac™ rail system is standard on most Bernhardt Design conference table tops. This rail system provides the location for mounting bases and installing auxiliary components for wire and equipment management. The rails also provide critical structural integrity to the conference table top allowing for longer spans with greater strength and dimensional stability.

Mediatrac™ grommet system provides power and 16 different options of Extron data configurations. Grommets are available in 5 different sizes ranging from an 8" x 4" single door unit to a 72" x 8" double door unit. All units have a brushed aluminum trim with options of brushed aluminum, laminate, back-painted glass or wood veneer doors matching the finish and grain direction of the conference table top. Mediatrac™ grommets are sold and shipped separately and are easily installed from the top of the table.

Hardwired and corded power are available.

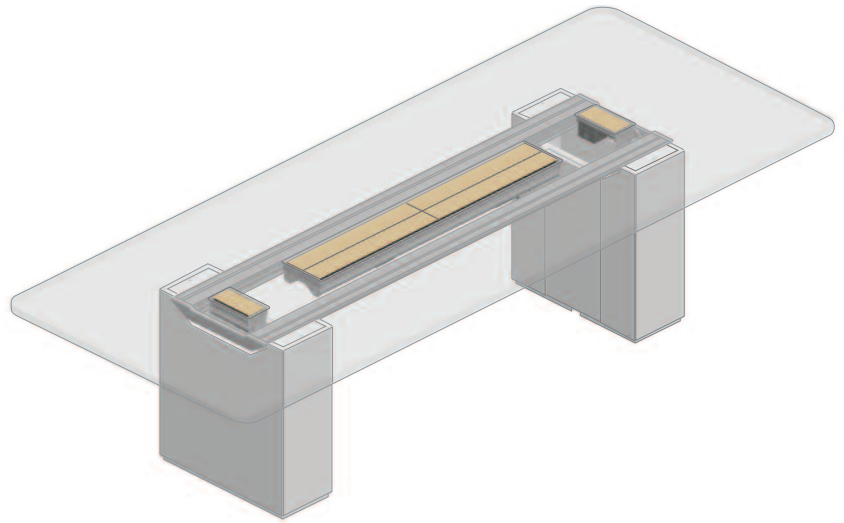


Illustration showing Mediatrac™ grommets

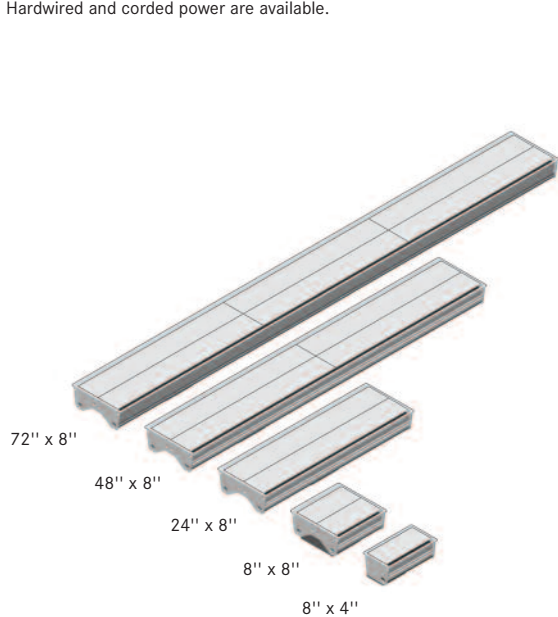
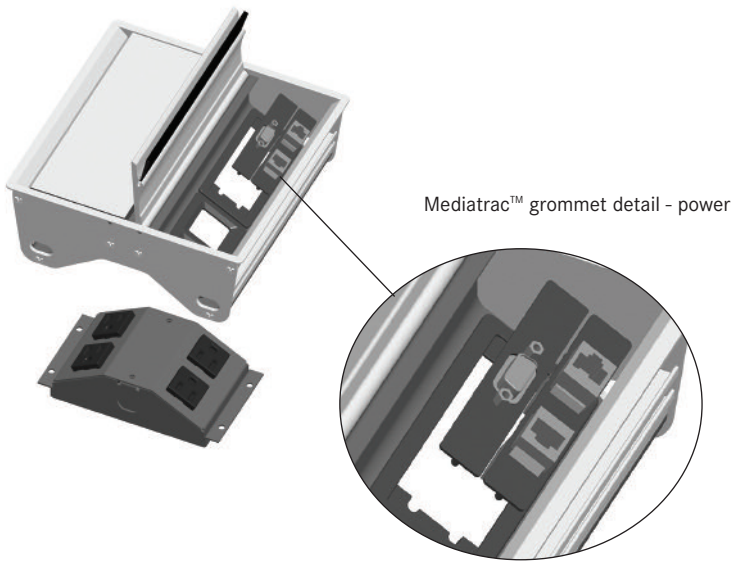


Illustration showing Mediatrac™ range of available sizes.



Power and data locations in Mediatrac™ grommets



Mediatrix™ grommet detail - power

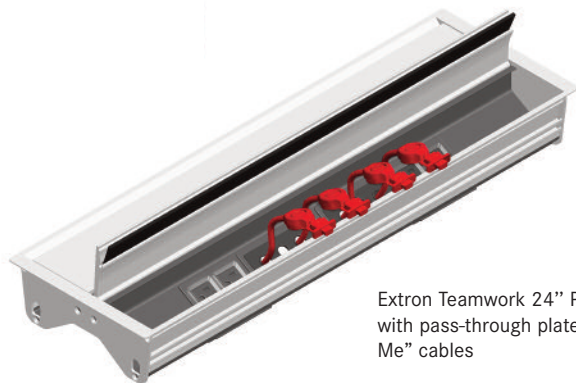
Mediatrix™ Power and Data

The power modules for Mediatrix™ mount in the grommet assembly allowing for ease of installation as well as maximum flexibility when hardwired units are being connected.

Mediatrix™ grommets are available in either corded or hardwired assemblies. Power is provided standard in all skus, however, corded or hardwire must be specified. All assemblies are CSA approved and certified for use in all US cities. Corded units: Two or four 110V / 15 amp grounded outlets with 10 feet of 14 gauge SJT grounded cord. CSA approved. Hardwire units: Two or four 110V / 15 amp grounded outlets with 6 feet of 3/8" black liquid tight conduit with an extra 1 foot of wire exposed at the end of the conduit. CSA approved.

All Mediatrix™ grommets are designed to accept Extron AAP plates. For every location of a power module, there are locations for two single AAP plates. A blank plate will cover both slots when shipped from the factory. Extron AAP's must be specified separately. If an AAP is specified, it is the responsibility of the user's technical staff to field install. Note: If a single AAP is all that is required, then specify a C-VGG blank single cover plate to cover the second available slot.

Mediatrix™ has 8 different categories of data connectors totaling 16 different AAP plates. For special applications, more than 100 different AAP plates are available directly through Extron: <http://www.extron.com/company/article.aspx?id=aapmaap>



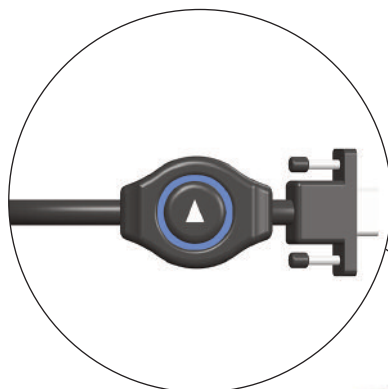
Extron Teamwork 24" Plus grommet with pass-through plates and "Show Me" cables

Extron Teamwork System

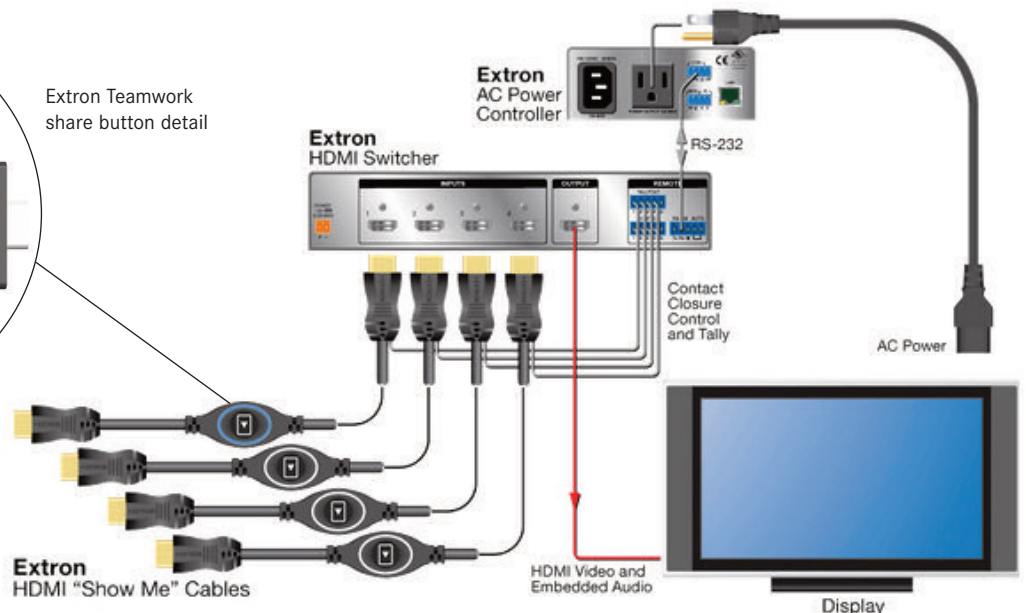
Extron's Teamwork System provides high resolution digital video transference for collaboration groups. User display content is shared through the use of the "Show Me" cable allowing multiple users to be connected to a display, with each user able to showcase the view from their personal screen on command. Pressing the "share" button, signified by the play symbol, presents the users display on the connected collaboration screen. The system is pre-configured and requires minimal set-up. It does not require software and is compatible with any flat panel display; Windows, Mac OS, and linux operating systems; and iOS or Android tablets.

The system is offered in both HDMI and VGA, as well as a combination of both. It is designed to work with four or six users. Each user is connected by a "Show Me" cable to the collaboration display. With the increase cables, Bernhardt Design has developed the 24" Plus Mediatrix grommet to accommodate the extra connections. The 24" Plus features a total of eight (8) grounded outlets and eight (8) locations for Extron single-space AAP plates, doubling the data and power available in the previous 24" Mediatrix grommet.

Extron: <http://www.extron.com/product/listbytype.aspx?subtype=578&=3>



Extron Teamwork share button detail



Extron Teamwork 400 HDMI system (Display Not Included)

Mediatrac™

Mediatrac™ grommets are available in 5 different sizes with either brushed aluminum, laminate, back-painted glass or wood veneer doors

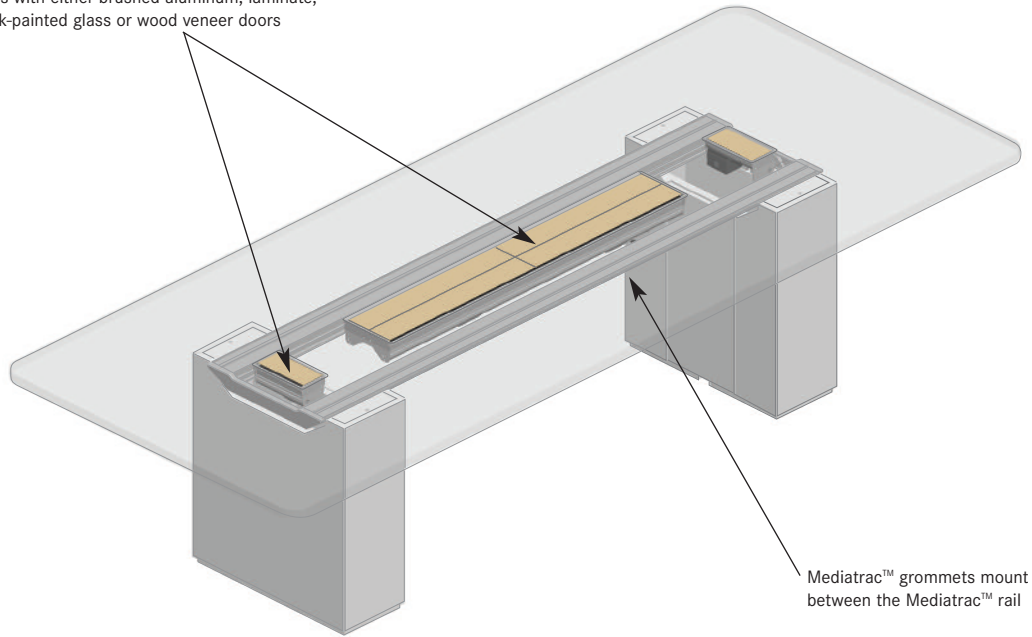


Illustration showing two different sizes of the Mediatrac™ grommet system

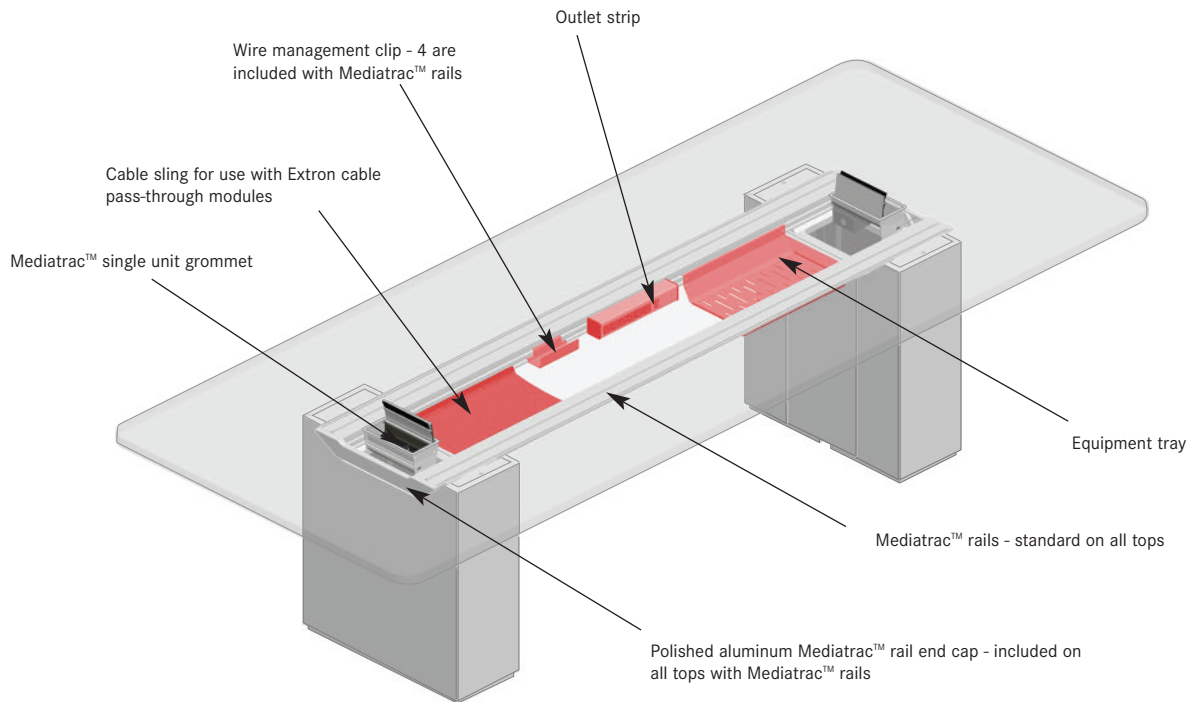


Illustration showing the available accessories for the Mediatrac™ rail and grommet system

Mediatrac™ Grommet Configurations

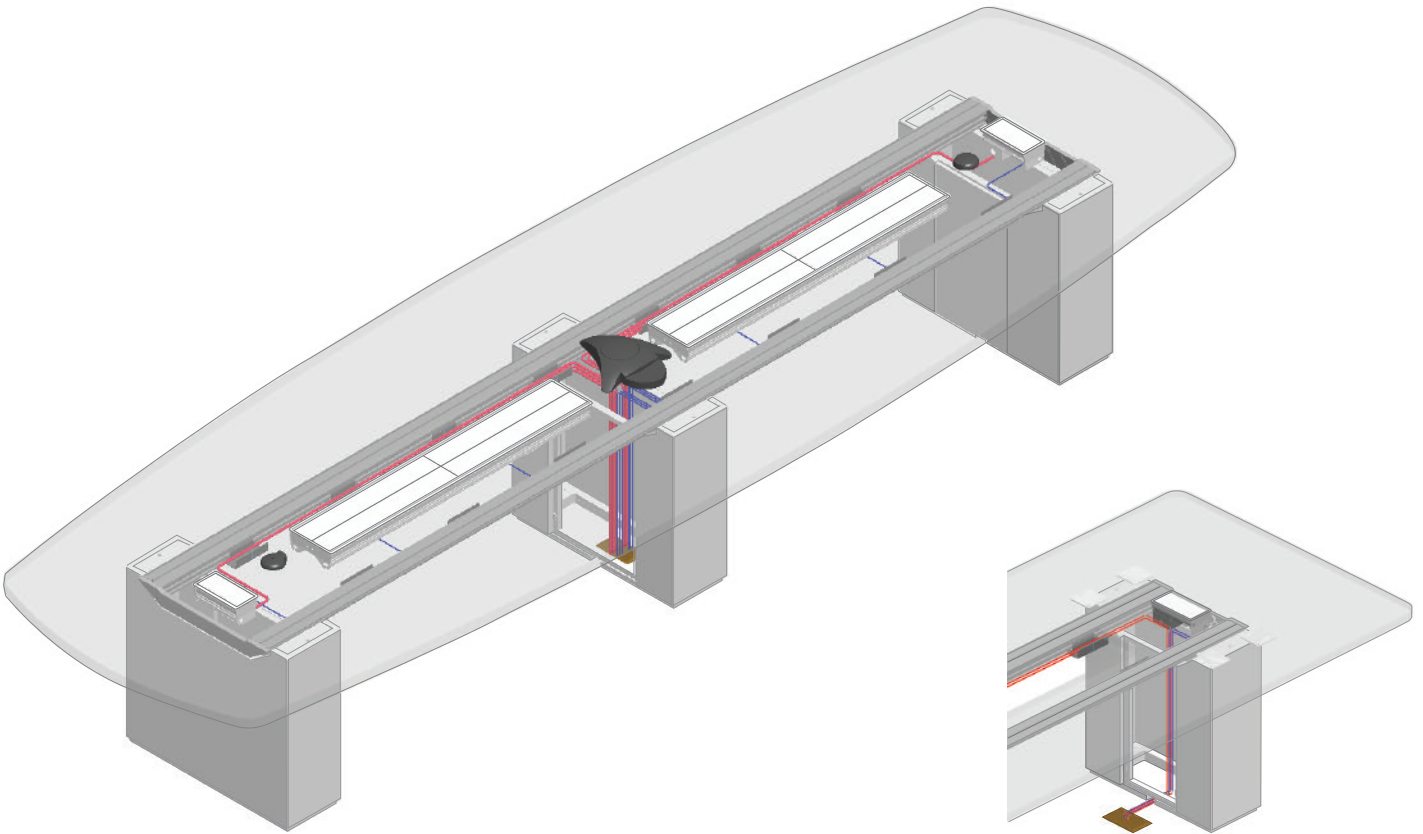
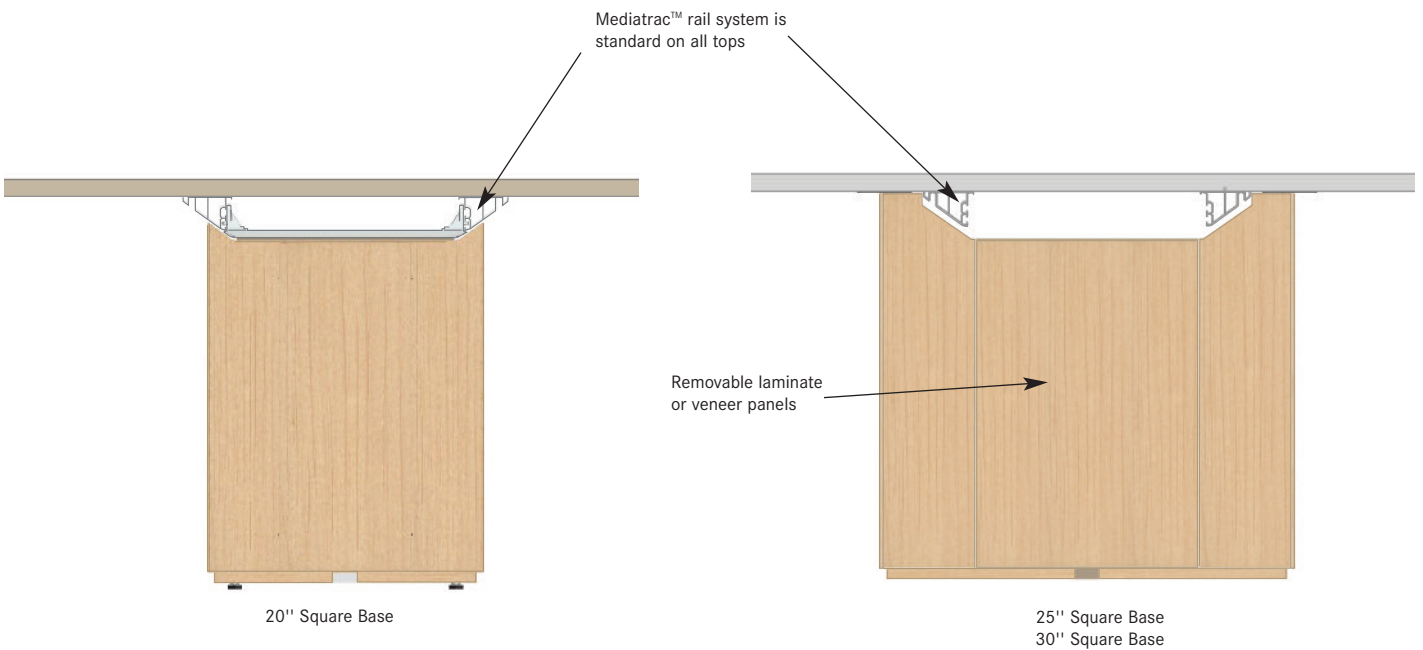
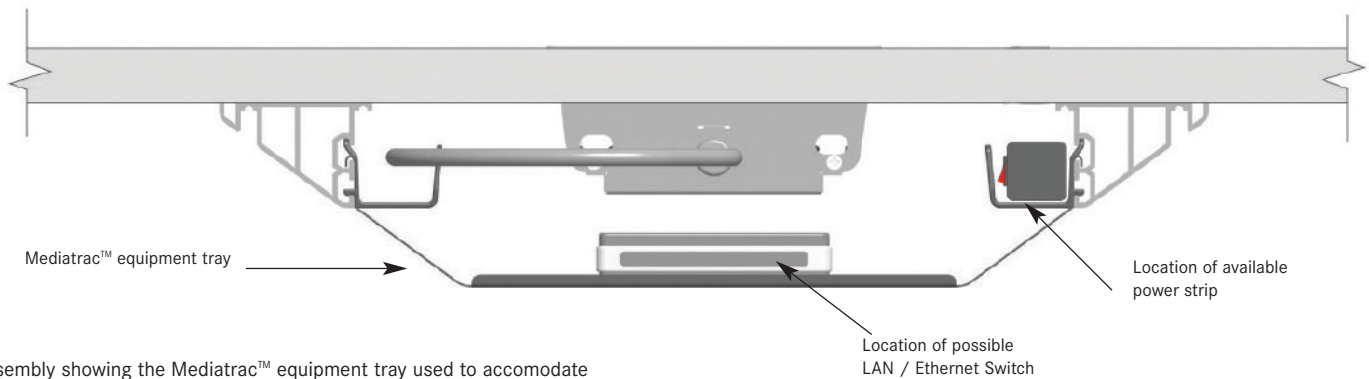


Illustration showing Encore bases configured and wired for the P20 Mediatrac configuration.

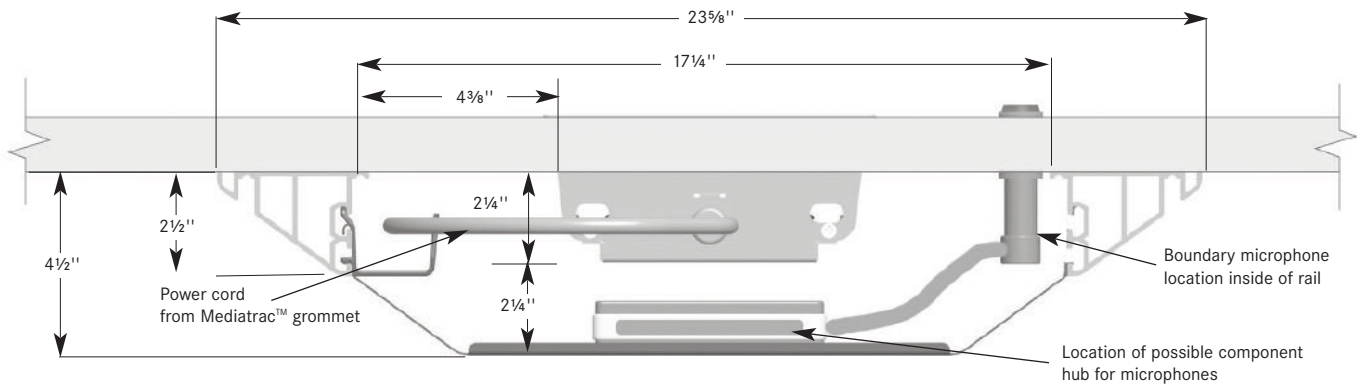
Encore base with floor monument outside of the base



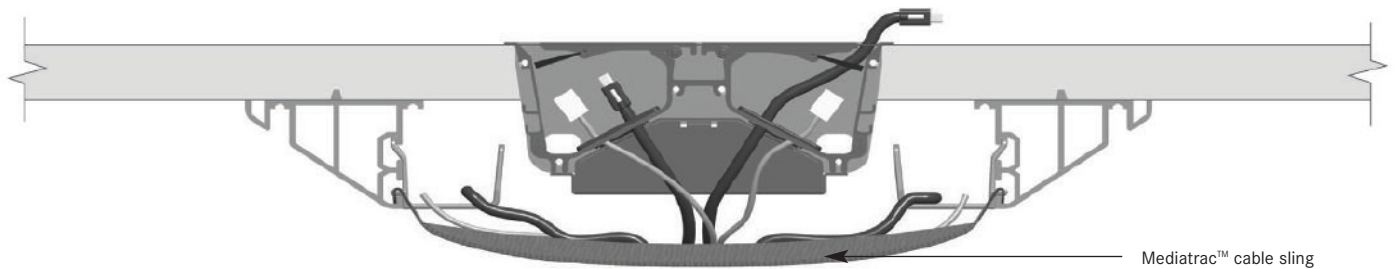
Mediatrac™



Assembly showing the Mediatrac™ equipment tray used to accommodate various types of equipment to support data needs of the table.

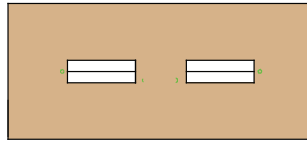


Assembly showing the Mediatrac™ equipment tray when used with boundary microphones. This tray can be used to mount microphone hubs and controllers for various electronic components.

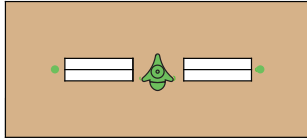


Assembly showing the Mediatrac™ cable sling used in conjunction with the Extron pass-through AAP module. In this configuration the customers' cables are used.

Mediatrac™ Grommet Configurations for Encore



M12 code designates the machining pattern for (2) 24" Mediatrix™ grommets, sold separately.



P12 code designates the machining pattern for (2) 24" Mediatrix™ grommets and (3) 1" Polycom grommets, sold separately.

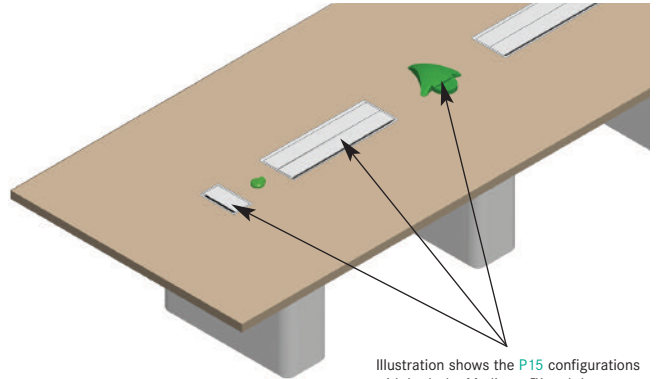


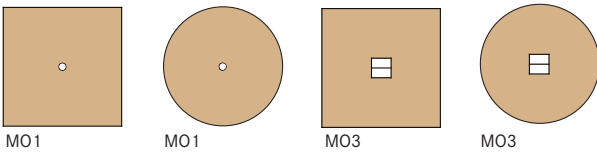
Illustration shows the **P15** configurations with both the Mediatrix™ and the Polycom™ grommets

Mediatrac™ grommets are available with either laminate, brushed aluminum, wood veneer or two options of back-painted white glass doors. When wood veneer doors are specified, the grain of grommet doors will run with the grain direction of the table top.

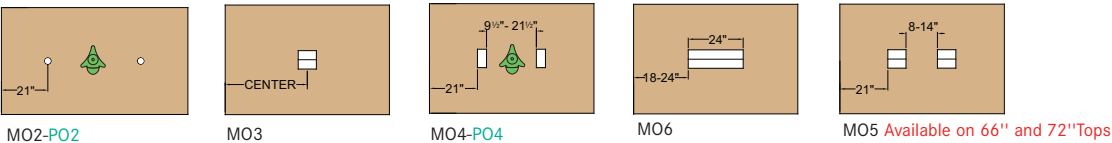
Mediatrac grommets are available in two different configurations coded starting with the letter:

- M** represents the Mediatrix grommet options
- P** represents the combination of Mediatrix grommets and 1" round grommets located for the use of Polycom or similar speakerphone systems. This allows all wiring to be concealed and managed.

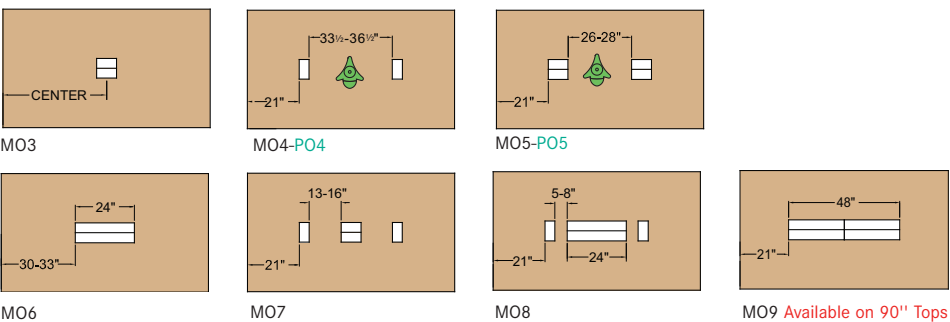
54" - 60" Square and Round



60" - 78" Table 6 Seats

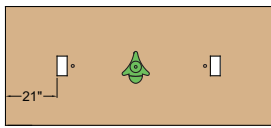


84" - 90" Table 6 Seats

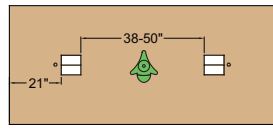


Mediatrac™ Grommet Configurations for Encore

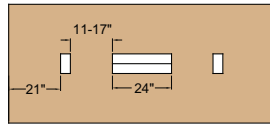
96" - 108" Table 8 Seats



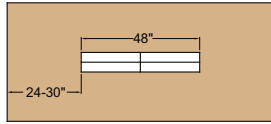
MO4-PO4



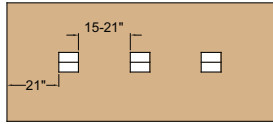
M05-PO5



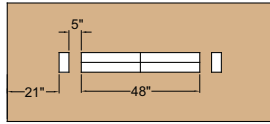
M08



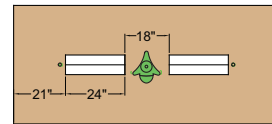
M09



M10



M11 Available on 108" Tops

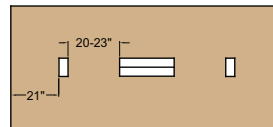


M12-P12 Available on 108" Tops

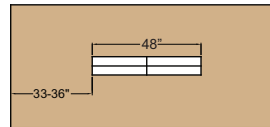
114" - 120" Table 10 Seats



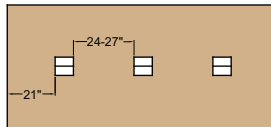
MO4-PO4



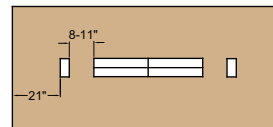
M08



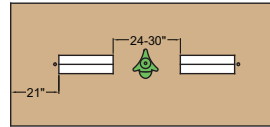
M09



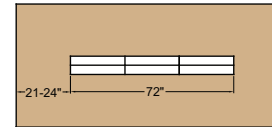
M10



M11

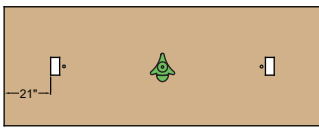


M12-P12

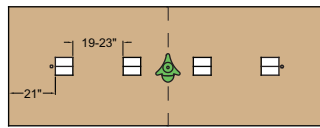


M13

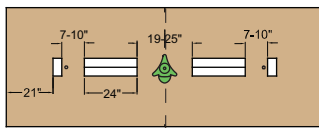
132" - 144" Table 12 Seats



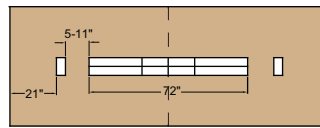
MO4-PO4



M14-P14

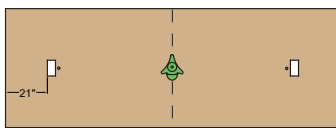


M15-P15

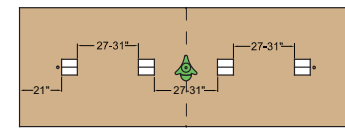


M17

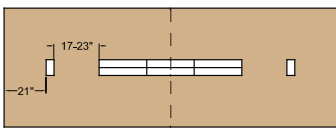
156" - 168" Table 14 Seats



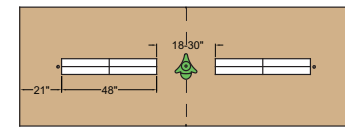
MO4-PO4



M14-P14



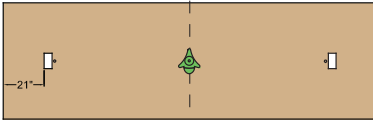
M17



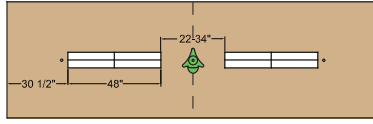
M18-P18

Mediatrac™ Grommet Configurations for Encore

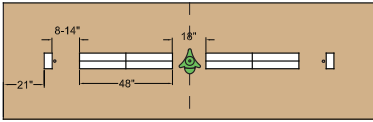
180" - 192" Table 16 Seats



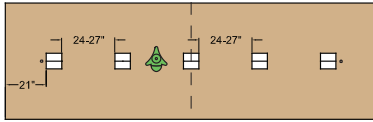
M04-PO4



M18-P18

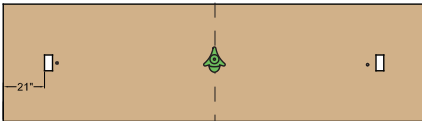


M20-P20

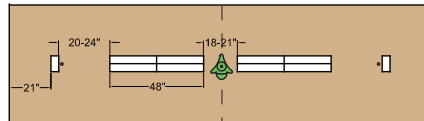


M21-P21

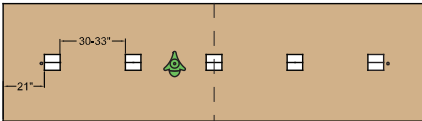
204" - 218" Table 18 Seats



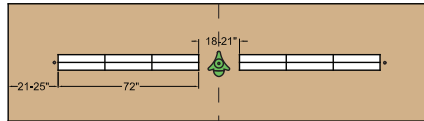
M04-PO4



M20-P20



M21-P21

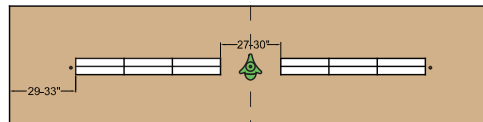


M22-P22

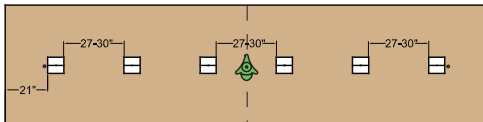
228" - 240" Table 20 Seats



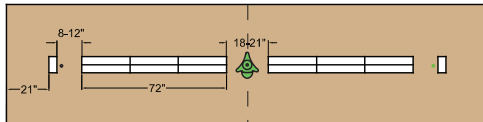
M04-PO4



M22-P22

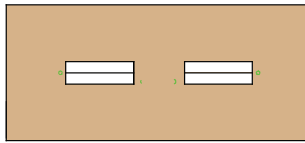


M25



M26-P26

Mediatrac™ Glass Grommet Configurations for Encore



M12 code designates the machining pattern for (2) 24" MediATRAC™ grommets, sold separately.

MediatrAC grommets are available in glass tops in multiple configurations coded with the letter prefix **M** representing the MediATRAC grommet options

Polycom grommets are not available on glass tops but may be used on solid surface, laminate or wood veneer tops.

Specify grommet locations when ordering tops. Specify grommets separately.

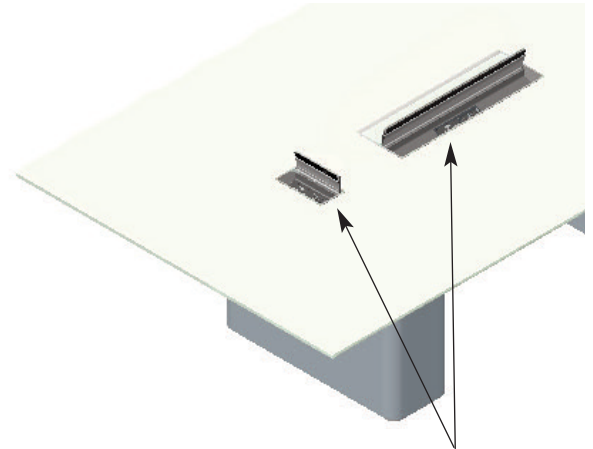
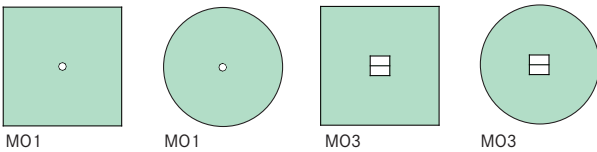


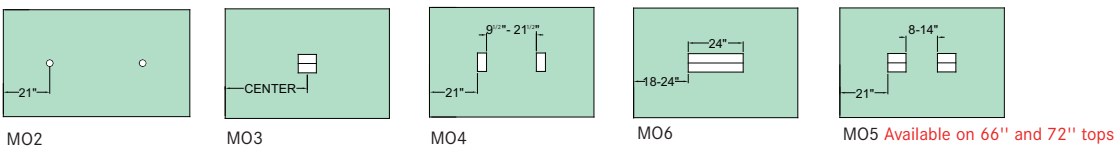
Illustration shows the M15 configurations with the MediATRAC™ 8" single door and the 24" double door grommet

MediatrAC™ grommets are available with brushed aluminum, laminate, wood veneer or two options of back-painted glass doors. Glass tops require specific grommets that are specified for use with glass tops. When wood veneer doors are specified, the grain of grommet doors will run with the grain direction of the table top.

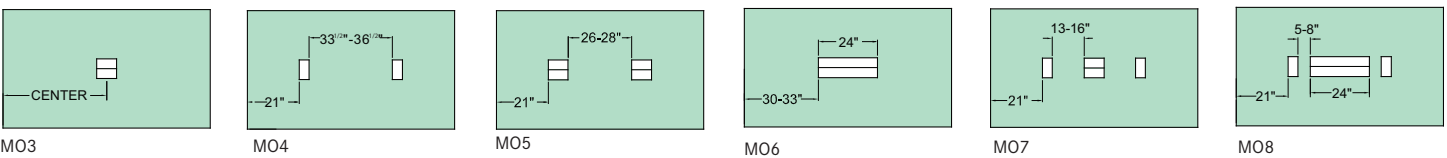
54" - 60" Square and Round



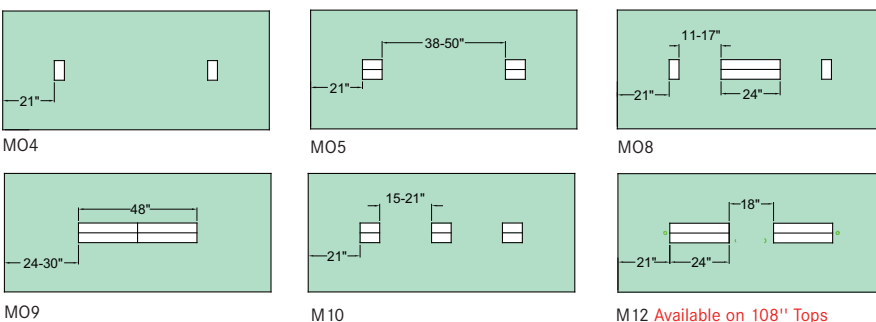
60" - 78" Table 6 Seats



84" - 90" Table 6 Seats



96" - 108" Table 8 Seats

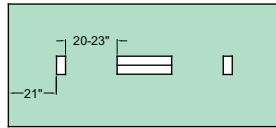


Mediatrac™ Glass Grommet Configurations for Encore

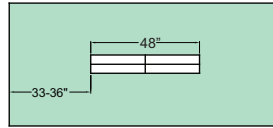
114" - 120" Table 10 Seats



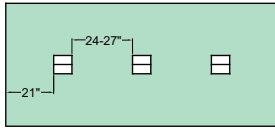
M04-PO4



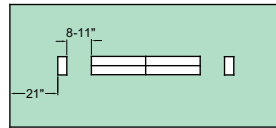
M08



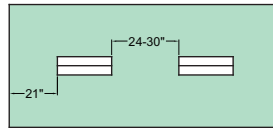
M09



M10



M11

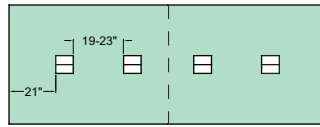


M12 Available on 108" tops

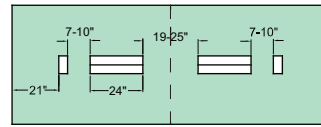
132" - 144" Table 12 Seats



M04

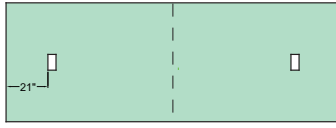


M14

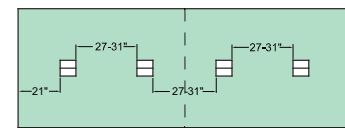


M15

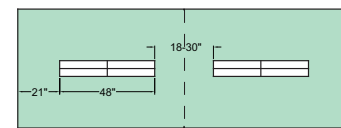
156" - 168" Table 14 Seats



M04

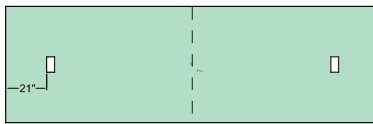


M14

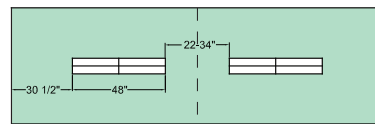


M18

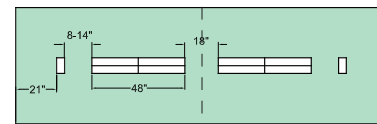
180" - 192" Table 16 Seats



M04

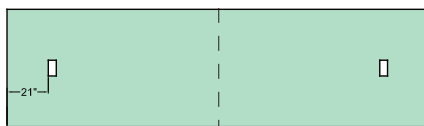


M18

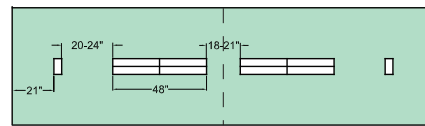


M20

204" - 218" Table 18 Seats

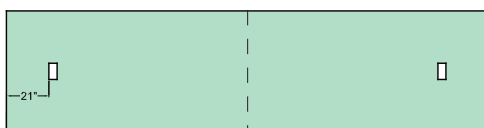


M04

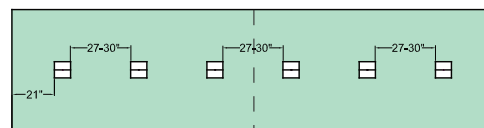


M20


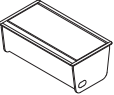
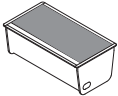
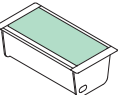
228" - 240" Table 20 Seats

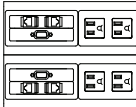
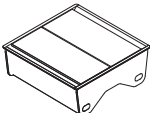
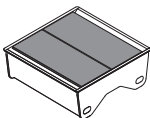
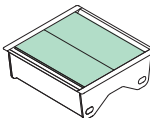


M04



M25

description	sku	w	d	h	weight	specifications	price
8" single door communication grommet							
AAP module specified separately 							
	aluminum	VAZ	8	4	3½	corded	
	2 grounded outlets, 1 exit plug	VAT	8	4	3½	hardwired	
	accepts 2 Extron single space AAP's						
	brushed aluminum frame and door	HAZ	8½	4	3½	for glass tops only; corded	
	specify grommet location when ordering top; specify veneer code X; specify finish code XXX	HAT	8½	4	3½	for glass tops only; hardwired	
	wood/laminate	VWZ	8	4	3½	corded	
	2 grounded outlets, 1 exit plug	VWT	8	4	3½	hardwired	
	accepts 2 Extron single space AAP's						
	glass	HGZ	8½	4	3½	for glass tops only; corded	
	2 grounded outlets, 1 exit plug	HGT	8½	4	3½	for glass tops only; hardwired	
	accepts 2 Extron single space AAP's						
brushed aluminum frame with glass door							
specify grommet location when ordering top							
specify veneer code 5 or 7; specify finish code XXX							


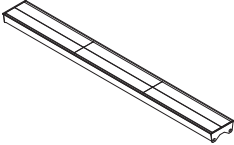
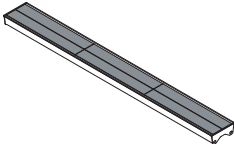
8" double door communication grommet							
AAP modules specified separately 							
	aluminum	VAY	8	8	3½	corded; 2 doors	
	4 grounded outlets, 1 exit plug	VAS	8	8	3½	hardwired; 2 doors	
	accepts 4 Extron single space AAP's						
	brushed aluminum frame and doors	HAY	8½	8	3½	for glass tops only; corded; 2 doors	
	specify grommet location when ordering top; specify veneer code X; specify finish code XXX	HAS	8½	8	3½	for glass tops only; hardwired; 2 doors	
	wood/laminate	VWY	8	8	3½	corded; 2 doors	
	4 grounded outlets, 1 exit plug	VWS	8	8	3½	hardwired; 2 doors	
	accepts 4 Extron single space AAP's						
	glass	HGY	8½	8	3½	for glass tops only; corded; 2 doors	
	4 grounded outlets, 1 exit plug	HGS	8½	8	3½	for glass tops only; hardwired; 2 doors	
	accepts 4 Extron single space AAP's						
brushed aluminum frame with glass doors							
specify grommet location when ordering top							
specify veneer code 5 or 7; specify finish code XXX							

specification codes	series	sku	veneer	style	pull/hardware	finish
	<input type="checkbox"/> conference		<input type="checkbox"/> plain/abstract laminate <input type="checkbox"/> woodgrain laminate <input checked="" type="checkbox"/> brushed aluminum <input type="checkbox"/> cherry <input type="checkbox"/> maple <input type="checkbox"/> oak <input type="checkbox"/> walnut <input type="checkbox"/> paldao <input type="checkbox"/> back-painted glass <input type="checkbox"/> etched, back-painted glass	<input checked="" type="checkbox"/> none	<input type="checkbox"/> 4 brushed aluminum	see page 6
	<input type="checkbox"/> F	<input type="checkbox"/> <input type="checkbox"/> <input type="checkbox"/>	<input type="checkbox"/>	<input checked="" type="checkbox"/> X	<input type="checkbox"/> 4	<input type="checkbox"/> <input type="checkbox"/> <input type="checkbox"/>

description	sku	w	d	h	weight	specifications	price
24" plus communication grommet							
AAP modules specified separately							
	aluminum	VAK	24	8	3½	corded; 2 doors	
	8 grounded outlets, 2 exit plugs	VAJ	24	8	3½	hardwired; 2 doors	
	accepts 8 Extron single space AAP's						
	brushed aluminum frame and doors	HAK	24½	8	3½	for glass tops only; corded; 2 doors	
specify grommet location when ordering top; specify veneer code X; specify finish code XXX	HAJ	24½	8	3½	for glass tops only; hardwired; 2 doors		
	wood/laminate	VWK	24	8	3½	corded; 2 doors	
	8 grounded outlets, 2 exit plugs	VWJ	24	8	3½	hardwired; 2 doors	
	accepts 8 Extron single space AAP's						
	brushed frame with laminate or veneer doors						
specify grommet location when ordering top; specify veneer and finish code							
	glass	VGK	24½	8	3½	for glass tops only; corded; 2 doors	
	8 grounded outlets, 2 exit plugs	VGJ	24½	8	3½	for glass tops only; hardwired; 2 doors	
	accepts 8 Extron single space AAP's						
	brushed frame with glass doors						
specify grommet location when ordering top; specify veneer code 5 or 7; specify finish code XXX							
48" door communication grommet							
AAP modules specified separately							
	aluminum	VAW	48	8	3½	corded; 4 doors	
	8 grounded outlets, 2 exit plugs	VAQ	48	8	3½	hardwired; 4 doors	
	accepts 8 Extron single space AAP's						
	brushed aluminum frame and doors	HAW	48½	8	3½	for glass tops only; corded; 4 doors	
specify grommet location when ordering top; specify veneer code X; specify finish code XXX	HAQ	48½	8	3½	for glass tops only; hardwired; 4 doors		
	wood/laminate	VWW	48	8	3½	corded; 4 doors	
	8 grounded outlets, 2 exit plugs	VWQ	48	8	3½	hardwired; 4 doors	
	accepts 8 Extron single space AAP's						
	brushed aluminum frame with laminate or veneer doors						
specify grommet location when ordering top; specify veneer and finish code							
	glass	HGW	48½	8	3½	for glass tops only; corded; 4 doors	
	8 grounded outlets, 2 exit plugs	HGQ	48½	8	3½	for glass tops only; hardwired; 4 doors	
	accepts 8 Extron single space AAP's						
	brushed aluminum frame with glass doors						
specify grommet location when ordering top; specify veneer code 5 or 7; specify finish code XXX							

specification codes

series	sku	veneer	style	pull/hardware	finish
<input type="checkbox"/> conference		<input type="checkbox"/> plain/abstract laminate <input type="checkbox"/> woodgrain laminate <input checked="" type="checkbox"/> brushed aluminum <input type="checkbox"/> cherry <input type="checkbox"/> maple <input type="checkbox"/> oak <input type="checkbox"/> walnut <input type="checkbox"/> paldao <input type="checkbox"/> back-painted glass <input type="checkbox"/> etched, back-painted glass	<input checked="" type="checkbox"/> none	<input type="checkbox"/> brushed aluminum	
<input type="checkbox"/>	<input type="checkbox"/>	<input type="checkbox"/>	<input checked="" type="checkbox"/>	<input type="checkbox"/>	<input type="checkbox"/>

description	sku	w	d	h	weight	specifications	price
72" door communication grommet							
AAP modules specified separately							
							
aluminum	VAV	72	8	3½		corded; 6 doors	
12 grounded outlets, 3 exit plugs	VAP	72	8	3½		hardwired; 6 doors	
accepts 12 Extron single space AAP's brushed aluminum frame and doors use with laminate or veneer tops specify grommet location when ordering top specify veneer code X; specify finish code XXX							
							
wood/laminate	VWV	72	8	3½		corded; 6 doors	
12 grounded outlets, 3 exit plugs	VWP	72	8	3½		hardwired; 6 doors	
accepts 12 Extron single space AAP's brushed aluminum frame with laminate or veneer doors specify grommet location when ordering top specify veneer and finish code							
							

specification codes

series

F conference

F

sku

veneer

- F plain/abstract laminate
- W woodgrain laminate
- X brushed aluminum
- J cherry
- E maple
- C oak
- Q walnut
- G paldao

style

X none

X

pull/hardware

4 brushed aluminum

4

finish

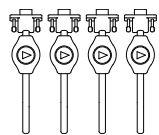
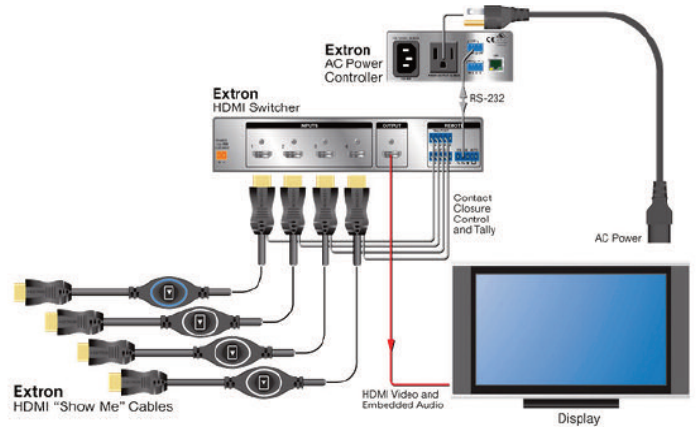
description	sku	w	d	h	weight	specifications	price
-------------	-----	---	---	---	--------	----------------	-------

extron® teamwork system

provides high resolution digital video transference for collaboration groups user display content shared through "Show Me" cables allowing multiple users to be connected and each user showcase their personal screen on command pressing the "share" button, signified by the play symbol, presents the users display on the connected collaboration screen
 preconfigured system requires minimal set-up and is compatible with any flat panel display; Windows, Mac OS, and linux operating systems; and iOS or Android tablets.

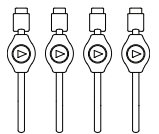
offered in both HDMI and VGA, or a combination of both works with 4 to 6 users connected by a "Show Me" cable to the collaboration display use with 24" Plus Mediatrac grommet designed to accommodate the extra connections 24" Plus features a total of 8 grounded outlets and 8 locations for Extron single-space AAP plates, doubling the data and power available in the previous 24" Mediatrac grommet.

Extron: <http://www.extron.com/product/listbytype.aspx?subtype=578&=3>



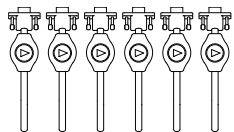
pre-configured collaboration system for **four users**
 includes : 4 VGA "Show Me" Cables
 4 user-input VGA switcher,
 a power supply and other necessary cables

VVE



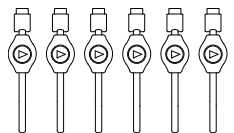
pre-configured collaboration system for **four users**
 includes : 4 HDMI "Show Me" Cables
 4 user-input HDMI switcher,
 a power supply and other necessary cables

VVF



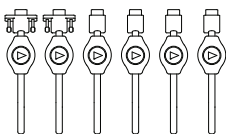
pre-configured collaboration system for **six users**
 includes : 6 VGA "Show Me" Cables
 6 user-input VGA switcher,
 a power supply and other necessary cables

VVG



pre-configured collaboration system for **six users**
 includes : 6 HDMI "Show Me" Cables
 6 user-input HDMI switcher,
 a power supply and other necessary cables



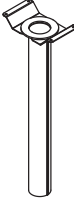

VVH



pre-configured collaboration system for **six users**
 includes : 2 VGA and 4 HDMI "Show Me" Cables
 6 user-input HDMI/VGA switcher,
 a power supply and other necessary cables

VVT

specification codes	series	sku	veneer	style	pull/hardware	finish
	<input type="checkbox"/> accessories		<input checked="" type="checkbox"/> none	<input checked="" type="checkbox"/> none	<input checked="" type="checkbox"/> none	
07/16	<input type="checkbox"/> C	<input type="checkbox"/> <input type="checkbox"/> <input type="checkbox"/>	<input checked="" type="checkbox"/> X	<input checked="" type="checkbox"/> X	<input checked="" type="checkbox"/> X	<input checked="" type="checkbox"/> X <input checked="" type="checkbox"/> X <input checked="" type="checkbox"/> X

description	sku	w	d	h	weight	specifications	price
 <p>speaker phone grommet</p> <p>polished aluminum specify pull/hardware code 6</p>	VGZ	1	1	1 1/8			
 <p>communication grommet</p> <p>die cast zinc brushed or polished aluminum finish fits 2 1/2" opening specify pull/hardware code 4 or 6</p>	GNC	3	3	7/8		specify with table top order	
	GMT	3	3	7/8		field installed	
 <p>wire management system</p> <p>gray, nylon mesh, 2 3/4" diameter zippered wire management cover mounting bracket not designed as table support bracket dimensions: 8 3/4"w x 4 3/4"d x 1 1/4"h cover dimensions: 2 3/4"w x 2 3/4"d x 24 7/8"h specify pull/hardware code X</p>	VGS	8 3/4	4 3/4	26 1/8			
 <p>wire management snake</p> <p>silver finish flexible cable management system weighted metal base specify pull/hardware code X</p>	VGW	2 1/2	2 1/2	30			

specification codes

series

accessories

C

sku

| | |

veneer

none

X

style

none

X

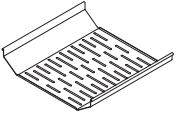
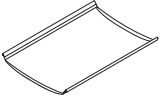
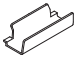
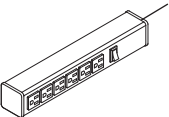
pull/hardware

4 brushed aluminum
 6 brushed aluminum
 X none

|

finish

X X X

description	sku	w	d	h	weight	specifications	price
 <p>equipment tray silver powdercoat</p>	VMZ VMY	12½ 17½	16 16	3 3		use with 25" base use with 20" or 30" base	
 <p>cable sling grey nylon mesh material hooks onto mediatrac™ rails specify with Extron pull-through AAP C-VGY</p>	VMX VMW	12½ 17½	16 16	3 3		use with 25" base use with 20" or 30" base	
 <p>wire clip smoke polycarbonate finish 4 included with each table</p>	VNZ	6	2¼	1¾			
 <p>power strip 6 outlet center; 110v 15 amp 15' plug in cord surge protector UL Listed</p>	VNY	12¼	2	1¾			

specification codes	series	sku	veneer	style	pull/hardware	finish
none	<input checked="" type="checkbox"/> accessories		<input checked="" type="checkbox"/> none	<input checked="" type="checkbox"/> none	<input checked="" type="checkbox"/> none	
07/16	<input checked="" type="checkbox"/>	<input type="checkbox"/> <input type="checkbox"/> <input type="checkbox"/>	<input checked="" type="checkbox"/>	<input checked="" type="checkbox"/>	<input checked="" type="checkbox"/>	<input checked="" type="checkbox"/> <input checked="" type="checkbox"/> <input checked="" type="checkbox"/>